

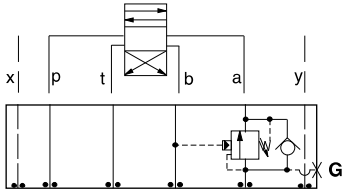


# ISO 05 X,Y SANDWICH BODIES



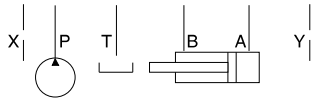
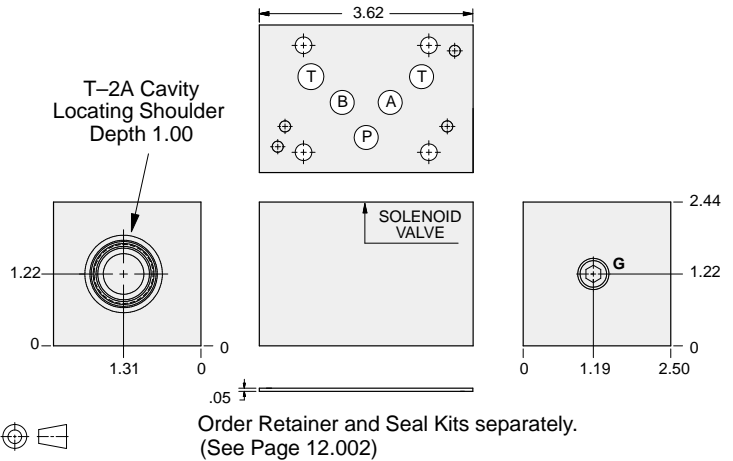
- Aluminum rated to 3000 psi and Ductile Iron rated to 5000 psi.
- See page viii for ordering cartridge/body and seals. Pressure ratings, material specifications on page xiv.

## Counterbalance Valves



### FUNCTION

On A Pilot  
from B



Gage Port (Plugged)	ALUMINUM		DUCTILE IRON	
	Model Code	List Price	Model Code	List Price
.25 NPTF	<b>BJA</b>		<b>BJA/S</b>	
.25 BSPP	<b>BJA/M</b>		<b>BJA/T</b>	

05xy COUNTERBALANCE

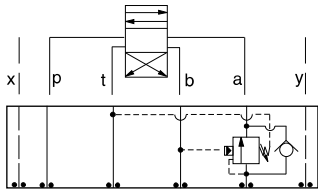
TYPICAL CARTRIDGES USED WITH BODIES SHOWN ABOVE			
	Counterbalance Valve, 3:1 Pilot Ratio		
	<b>CBEA Page 4.10</b>		
	Counterbalance Valve, 4.5:1 Pilot Ratio		
	<b>CBEG Page 4.12</b>		
	Counterbalance Valve, 10:1 Pilot Ratio		
	<b>CBEH Page 4.14</b>		
<b>OTHER VALVES:</b>			



# ISO 05 X,Y SANDWICH BODIES



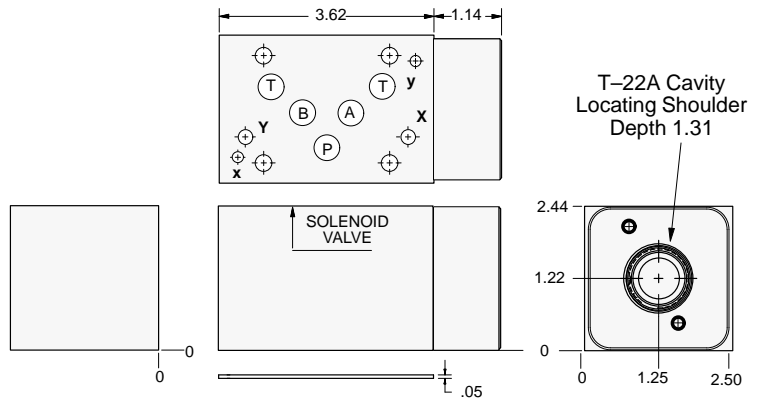
- Aluminum rated to 3000 psi and Ductile Iron rated to 5000 psi.
- See page viii for ordering cartridge/body and seals. Pressure ratings, material specifications on page xiv.



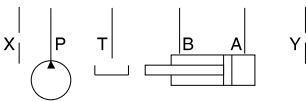
### FUNCTION

On A Pilot  
from B  
Vent to T

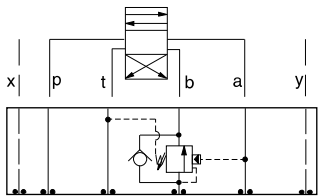
### Counterbalance Valves



Order Retainer and Seal Kits separately.  
(See Page 12.002)



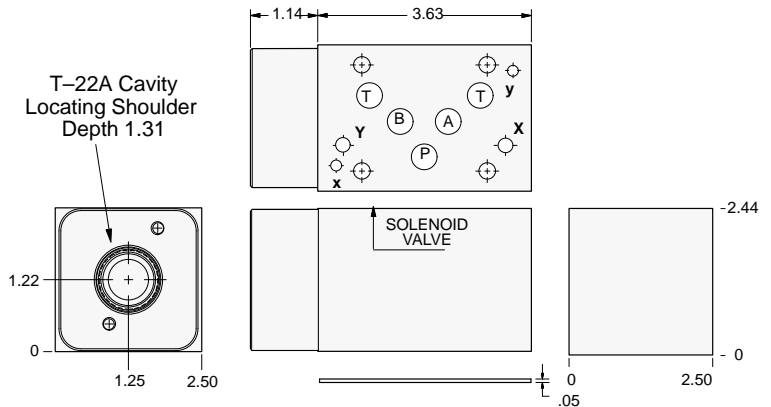
ALUMINUM		DUCTILE IRON	
Model Code	List Price	Model Code	List Price
<b>NJA</b>		<b>NJA/S</b>	



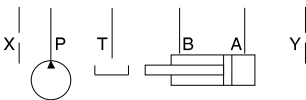
### FUNCTION

On B Pilot  
from A  
Vent to T

### Counterbalance Valves



Order Retainer and Seal Kits separately.  
(See Page 12.002)



ALUMINUM		DUCTILE IRON	
Model Code	List Price	Model Code	List Price
<b>NJB</b>		<b>NJB/S</b>	

05xy COUNTERBALANCE

### TYPICAL CARTRIDGES USED WITH BODIES SHOWN ABOVE

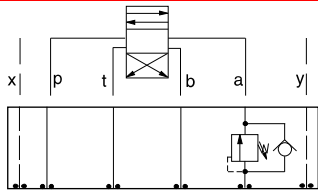
	Vented Counterbalance Valve, 3:1 Pilot Ratio		
	<b>CWEA Page 4.18</b>		
	Vented Counterbalance Valve, 5:1 Pilot Ratio		
	<b>CWEG Page 4.20</b>		
<b>OTHER VALVES:</b>			



# ISO 05 X,Y SANDWICH BODIES



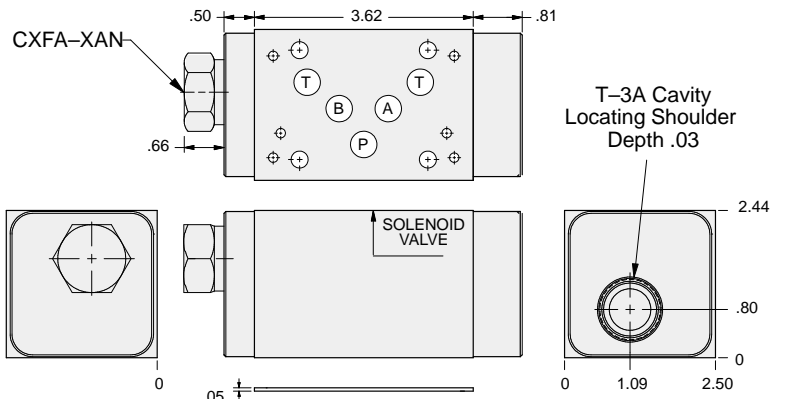
- Aluminum rated to 3000 psi and Ductile Iron rated to 5000 psi.
- See page viii for ordering cartridge/body and seals. Pressure ratings, material specifications on page xiv.



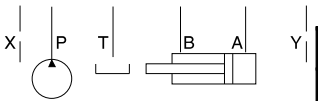
### FUNCTION

On A  
No Pilot Assist

### Counterbalance Valves

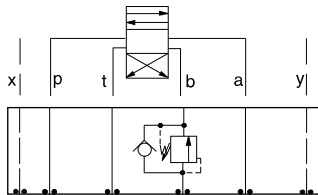


Order Retainer and Seal Kits separately.  
(See Page 12.002)



ALUMINUM		DUCTILE IRON	
Model Code	List Price	Model Code	List Price
<b>CJ4</b>		<b>CJ4/S</b>	

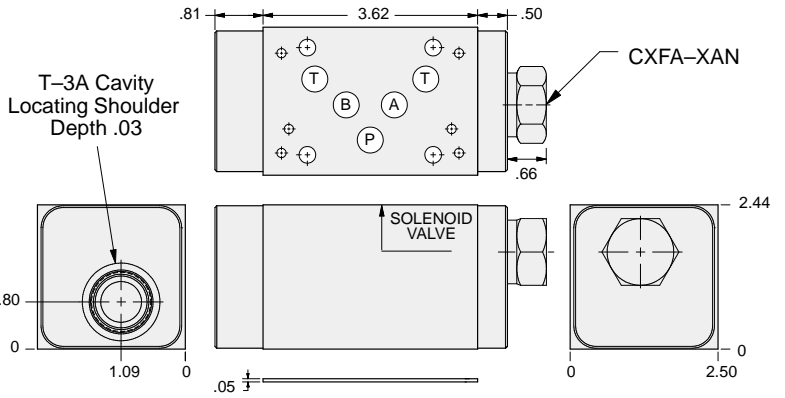
05xy COUNTERBALANCE



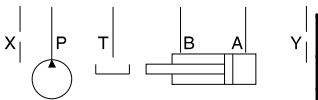
### FUNCTION

On B  
No pilot assist

### Counterbalance Valves



Order Retainer and Seal Kits separately.  
(See Page 12.002)



ALUMINUM		DUCTILE IRON	
Model Code	List Price	Model Code	List Price
<b>CJ5</b>		<b>CJ5/S</b>	

### TYPICAL CARTRIDGES USED WITH BODIES SHOWN ABOVE

	Direct Acting Relief Valve		
	<b>RDFA Page 1.10</b>		
<b>OTHER VALVES:</b>			

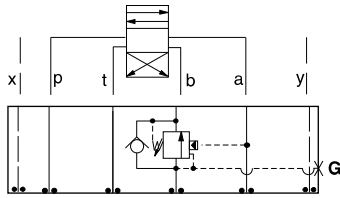


# ISO 05 X,Y SANDWICH BODIES



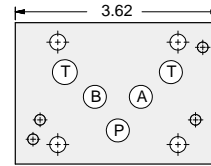
- Aluminum rated to 3000 psi and Ductile Iron rated to 5000 psi.
- See page viii for ordering cartridge/body and seals. Pressure ratings, material specifications on page xiv.

## Counterbalance Valves

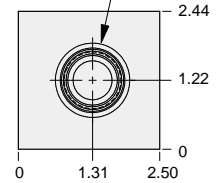
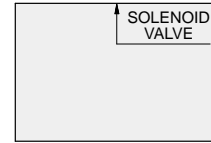
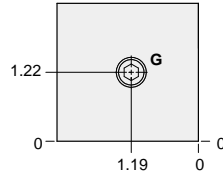


### FUNCTION

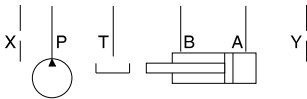
On B  
Pilot from A



T-2A Cavity  
Locating Shoulder  
Depth 1.00



Order Retainer and Seal Kits separately.  
(See Page 12.002)



Gage Port (Plugged)	ALUMINUM		DUCTILE IRON	
	Model Code	List Price	Model Code	List Price
.25 NPTF	<b>BJB</b>		<b>BJB/S</b>	
.25 BSPP	<b>BJB/M</b>		<b>BJB/T</b>	

05xy COUNTERBALANCE

### TYPICAL CARTRIDGES USED WITH BODIES SHOWN ABOVE

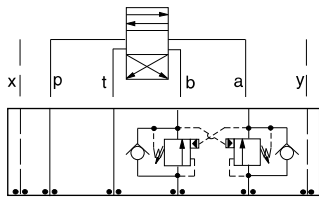
	Counterbalance Valve, 3:1 Pilot Ratio		
	<b>CBEA Page 4.10</b>		
	Counterbalance Valve, 4.5:1 Pilot Ratio		
	<b>CBEG Page 4.12</b>		
	Counterbalance Valve, 10:1 Pilot Ratio		
	<b>CBEH Page 4.14</b>		
<b>OTHER VALVES:</b>			



# ISO 05 X,Y SANDWICH BODIES



- Aluminum rated to 3000 psi and Ductile Iron rated to 5000 psi.
- See page viii for ordering cartridge/body and seals. Pressure ratings, material specifications on page xiv.

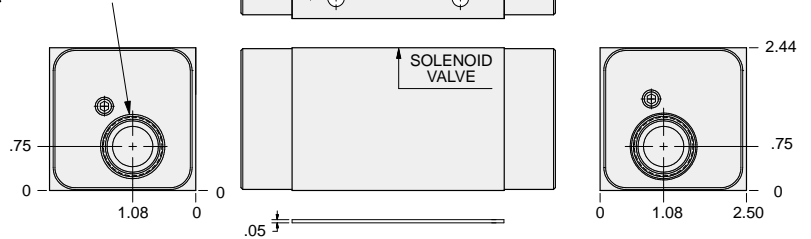


### FUNCTION

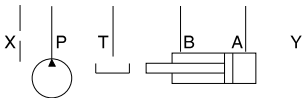
On **A** and **B**  
Cross-Piloted

### Counterbalance Valves

T-2A Cavity  
Locating Shoulder  
Depth .73  
2 places.



Order Retainer and Seal Kits separately.  
(See Page 12.002)



ALUMINUM		DUCTILE IRON	
Model Code	List Price	Model Code	List Price
<b>BJY</b>		<b>BJY/S</b>	

05xy COUNTERBALANCE

### TYPICAL CARTRIDGES USED WITH BODIES SHOWN ABOVE

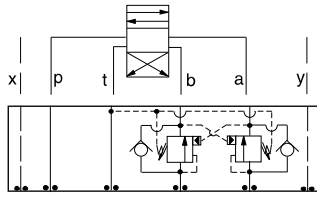
	Counterbalance Valve, 3:1 Pilot Ratio		
	<b>CBEA Page 4.10</b>		
	Counterbalance Valve, 4.5:1 Pilot Ratio		
	<b>CBEG Page 4.12</b>		
	Counterbalance Valve, 10:1 Pilot Ratio		
	<b>CBEH Page 4.14</b>		
<b>OTHER VALVES:</b>			



# ISO 05 X,Y SANDWICH BODIES



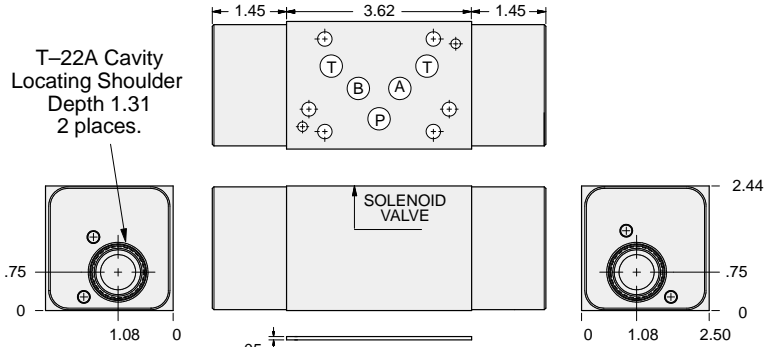
- Aluminum rated to 3000 psi and Ductile Iron rated to 5000 psi.
- See page viii for ordering cartridge/body and seals. Pressure ratings, material specifications on page xiv.



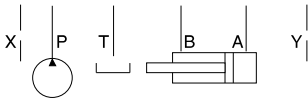
### FUNCTION

On **A** and **B**  
Cross-Piloted  
Vents to **T**

### Counterbalance Valves



Order Retainer and Seal Kits separately.  
(See Page 12.002)



ALUMINUM		DUCTILE IRON	
Model Code	List Price	Model Code	List Price
<b>NJY</b>		<b>NJY/S</b>	

05xy COUNTERBALANCE

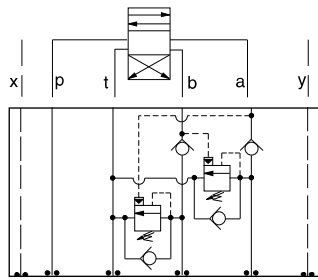
TYPICAL CARTRIDGES USED WITH BODIES SHOWN ABOVE			
	Vented Counterbalance Valve, 3:1 Pilot Ratio		
	<b>CWEA Page 4.18</b>		
	Vented Counterbalance Valve, 5:1 Pilot Ratio		
	<b>CWEG Page 4.20</b>		
<b>OTHER VALVES:</b>			



# ISO 05 X,Y SANDWICH BODIES



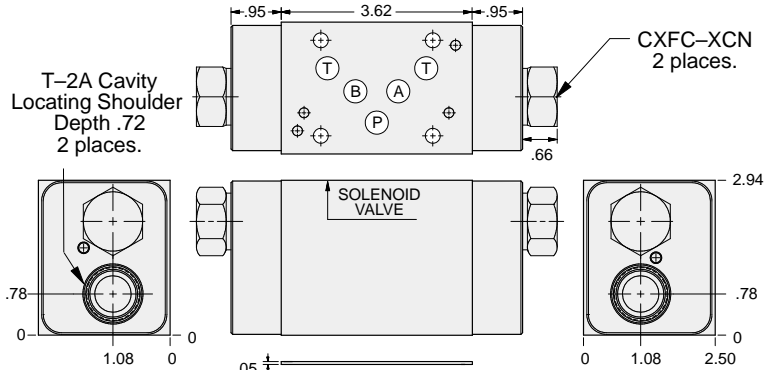
- Aluminum rated to 3000 psi and Ductile Iron rated to 5000 psi.
- See page viii for ordering cartridge/body and seals. Pressure ratings, material specifications on page xiv.



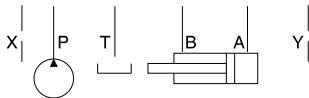
### FUNCTION

Cushion Lock  
Circuit  
On **A** and **B**

### Counterbalance Valves



Order Retainer and Seal Kits separately.  
(See Page 12.002)



ALUMINUM		DUCTILE IRON	
Model Code	List Price	Model Code	List Price
<b>BJ8</b>		<b>BJ8/S</b>	

05xy COUNTERBALANCE

TYPICAL CARTRIDGES USED WITH BODIES SHOWN ABOVE			
	Counterbalance Valve, 3:1 Pilot Ratio		
	<b>CBEA Page 4.10</b>		
	Counterbalance Valve, 4.5:1 Pilot Ratio		
	<b>CBEG Page 4.12</b>		
	Counterbalance Valve, 10:1 Pilot Ratio		
	<b>CBEH Page 4.14</b>		
<b>OTHER VALVES:</b>			