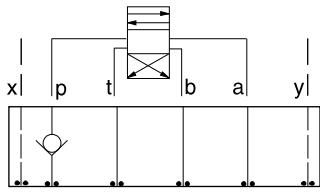




ISO 05 X,Y SANDWICH BODIES



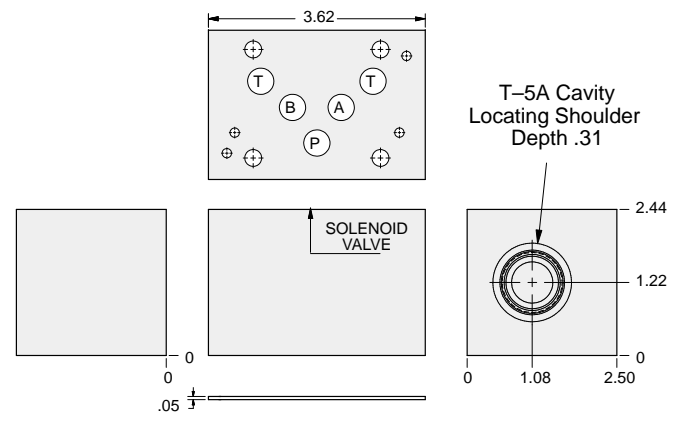
- Aluminum rated to 3000 psi and Ductile Iron rated to 5000 psi.
- See page viii for ordering cartridge/body and seals. Pressure ratings, material specifications on page xiv.



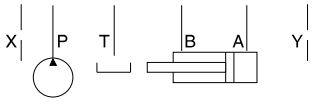
FUNCTION

On P

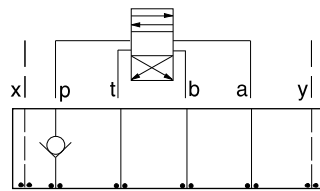
Check Valves



Order Retainer and Seal Kits separately.
(See Page 12.002)



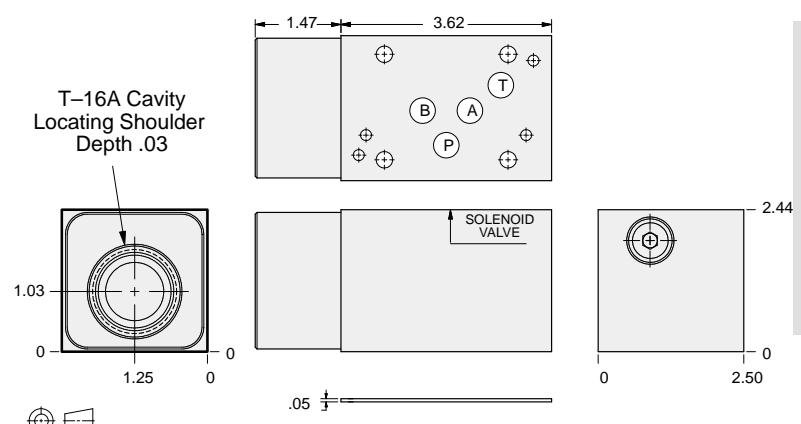
ALUMINUM		DUCTILE IRON	
Model Code	List Price	Model Code	List Price
DJP		DJP/S	



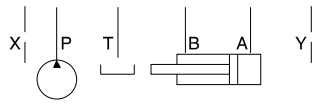
FUNCTION

On P
(High Capacity)

Check Valves



Order Retainer and Seal Kits separately.
(See Page 12.002)



ALUMINUM		DUCTILE IRON	
Model Code	List Price	Model Code	List Price
DJO		DJO/S	

05xy CHECK

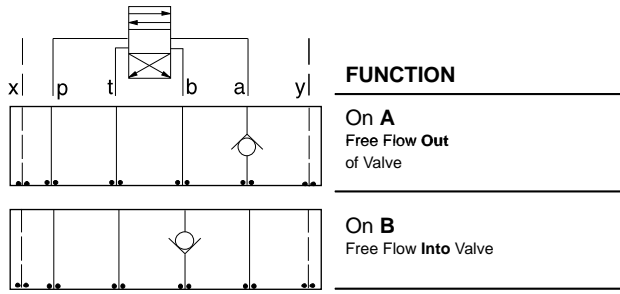
TYPICAL CARTRIDGES USED WITH BODIES SHOWN ABOVE			
	Check Valve, Free Flow Port 1 to Port 2 (Nose-to-Side)		
	CXFA Page 5.08 (use with DJP)		
	Check Valve, Free Flow Port 1 to Port 2 (Nose-to-Side)		
	CXHA Page 5.09 (use with DJO)		
OTHER VALVES:			



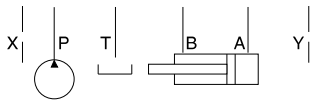
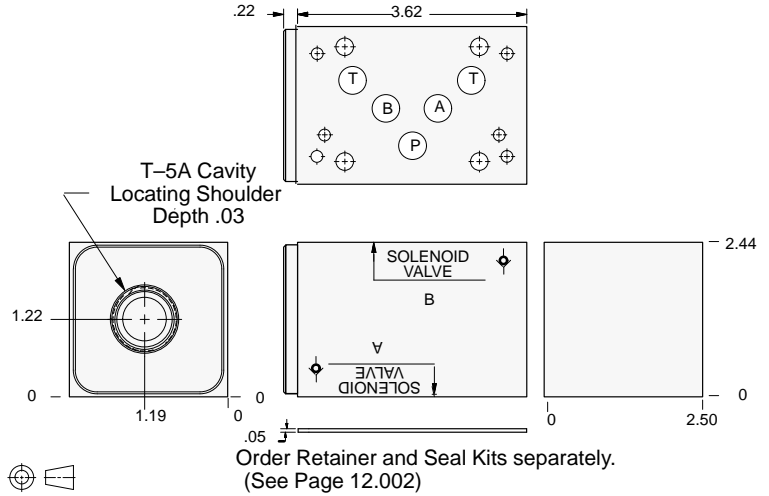
ISO 05 X,Y SANDWICH BODIES



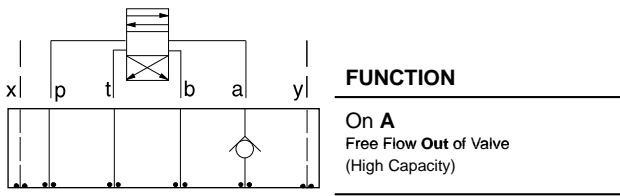
- Aluminum rated to 3000 psi and Ductile Iron rated to 5000 psi.
- See page viii for ordering cartridge/body and seals. Pressure ratings, material specifications on page xiv.



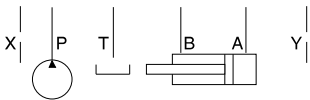
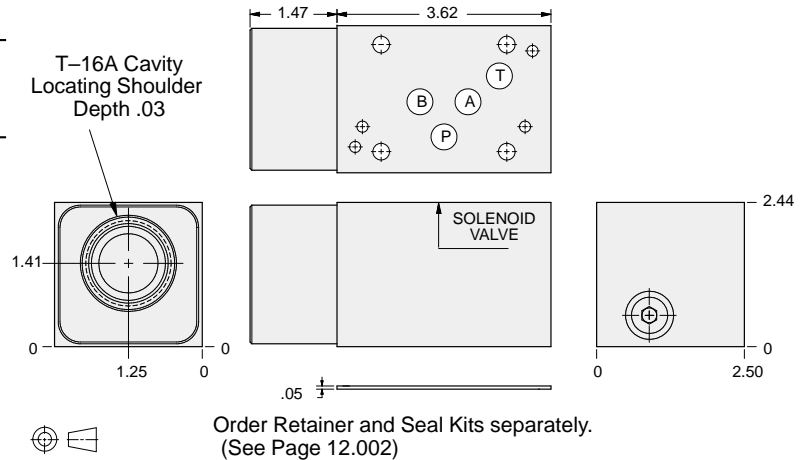
Check Valves



ALUMINUM		DUCTILE IRON	
Model Code	List Price	Model Code	List Price
DJK		DJK/S	



Check Valves



ALUMINUM		DUCTILE IRON	
Model Code	List Price	Model Code	List Price
DJC		DJC/S	

TYPICAL CARTRIDGES USED WITH BODIES SHOWN ABOVE

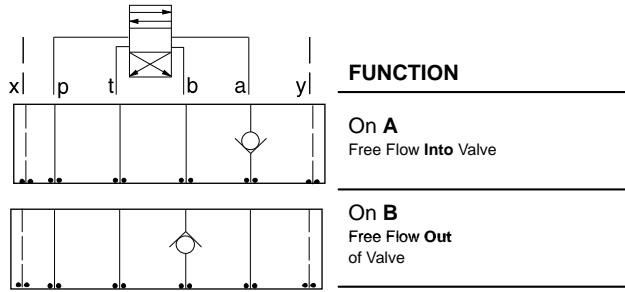
	Check Valve, Free Flow Port 1 to Port 2 (Nose-to-Side)		
	CXFA Page 5.08, (use with DJK)		
	Check Valve, Free Flow Port 1 to Port 2 (Nose-to-Side)		
	CXHA Page 5.09 (use with DJC)		
OTHER VALVES:			



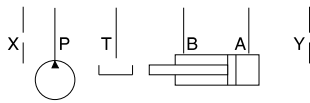
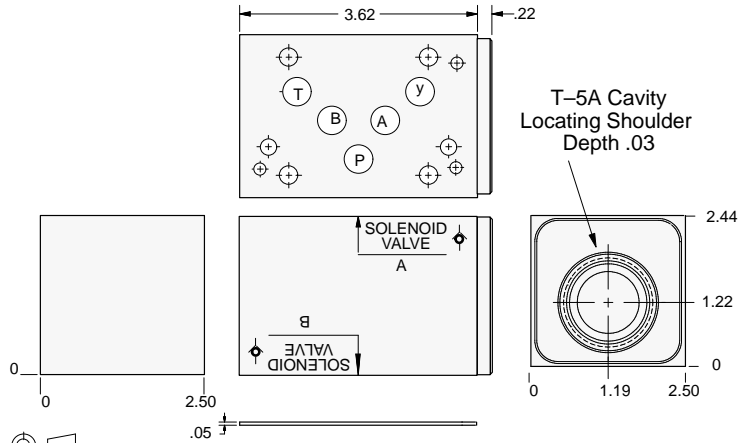
ISO 05 X,Y SANDWICH BODIES



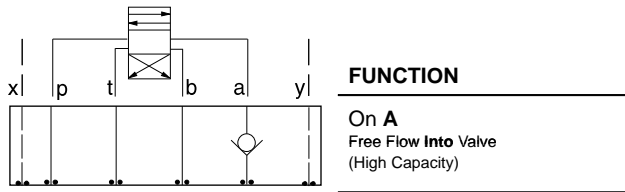
- Aluminum rated to 3000 psi and Ductile Iron rated to 5000 psi.
- See page viii for ordering cartridge/body and seals. Pressure ratings, material specifications on page xiv.



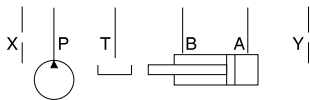
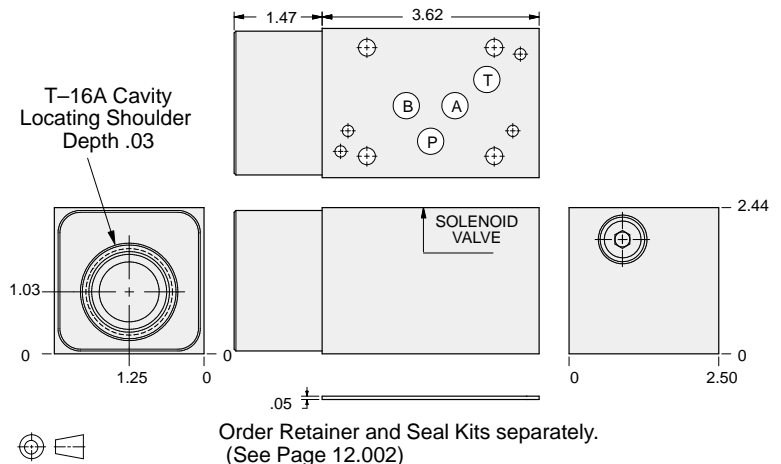
Check Valves



ALUMINUM		DUCTILE IRON	
Model Code	List Price	Model Code	List Price
DJJ		DJJ/S	



Check Valves



ALUMINUM		DUCTILE IRON	
Model Code	List Price	Model Code	List Price
DJD		DJD/S	

05xy CHECK

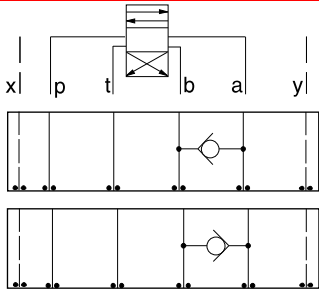
TYPICAL CARTRIDGES USED WITH BODIES SHOWN ABOVE			
	Check Valve, Free Flow Port 1 to Port 2 (Nose-to-Side)		
	CXFA Page 5.08 (use with DJJ)		
	Check Valve, Free Flow Port 1 to Port 2 (Nose-to-Side)		
	CXHA Page 5.09 (use with DJJ)		
OTHER VALVES:			



ISO 05 X,Y SANDWICH BODIES



- Aluminum rated to 3000 psi and Ductile Iron rated to 5000 psi.
- See page viii for ordering cartridge/body and seals. Pressure ratings, material specifications on page xiv.

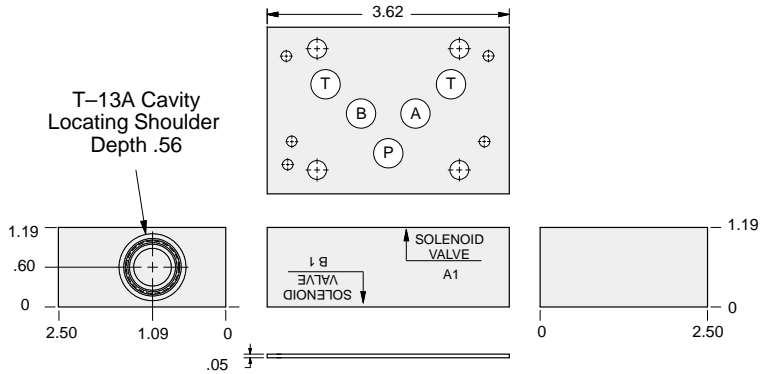


FUNCTION

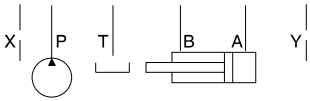
B to A

A to B

Check Valves



Order Retainer and Seal Kits separately.
(See Page 12.002)



ALUMINUM		DUCTILE IRON	
<i>Model Code</i>	<i>List Price</i>	<i>Model Code</i>	<i>List Price</i>
DJS		DJS/S	

05xy CHECK

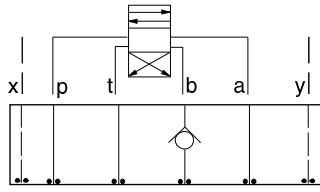
TYPICAL CARTRIDGES USED WITH BODIES SHOWN ABOVE			
	Check Valve, Free Flow Port 1 to Port 2 (Nose-to-Side)		
	CXDA Page 3.08		
OTHER VALVES:			



ISO 05 X,Y SANDWICH BODIES



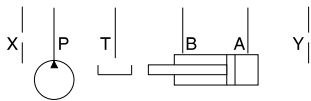
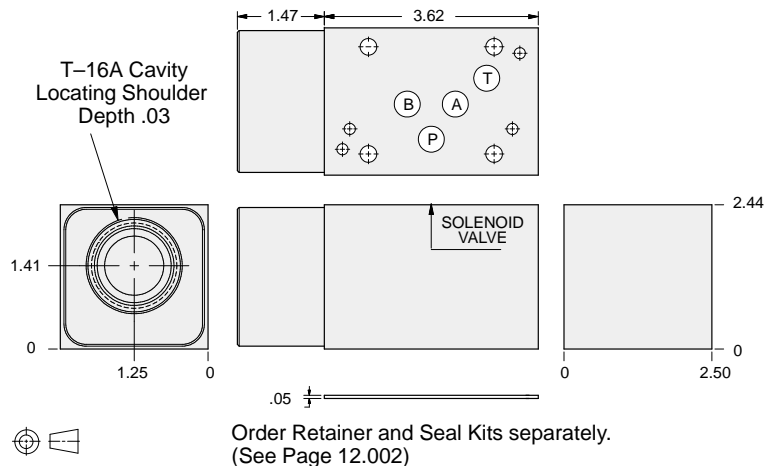
- Aluminum rated to 3000 psi and Ductile Iron rated to 5000 psi.
- See page viii for ordering cartridge/body and seals. Pressure ratings, material specifications on page xiv.



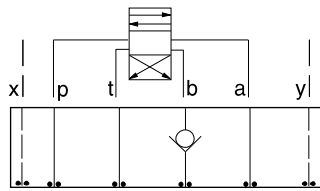
FUNCTION

On B
Free Flow Out of Valve
(High Capacity)

Check Valves



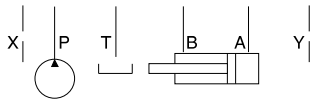
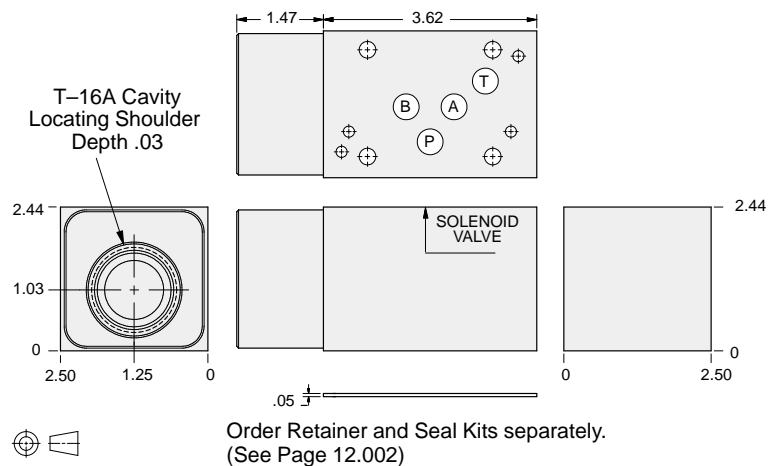
ALUMINUM		DUCTILE IRON	
Model Code	List Price	Model Code	List Price
DJE		DJE/S	



FUNCTION

On B
Free Flow Into Valve
(High Capacity)

Check Valves



ALUMINUM		DUCTILE IRON	
Model Code	List Price	Model Code	List Price
DJF		DJF/S	

05xy CHECK

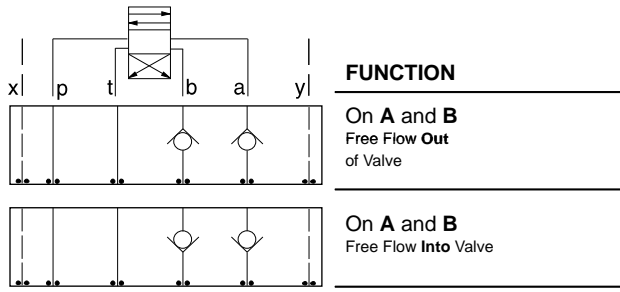
TYPICAL CARTRIDGES USED WITH BODIES SHOWN ABOVE			
	Check Valve, Free Flow Port 1 to Port 2 (Nose-to-Side)		
	CXHA Page 5.09		
OTHER VALVES:			



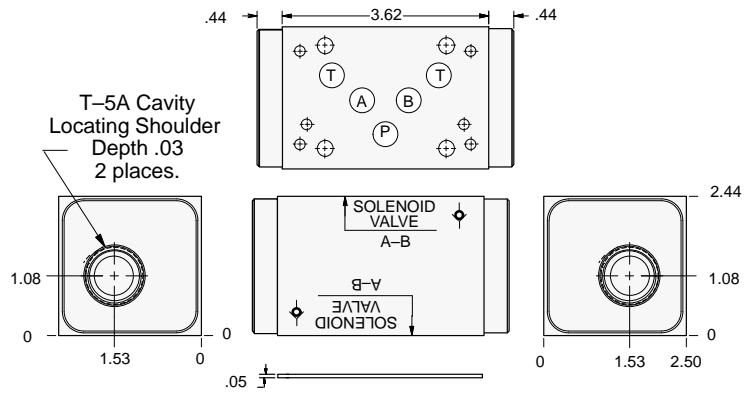
ISO 05 X,Y SANDWICH BODIES



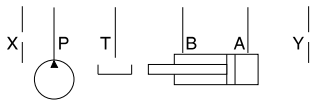
- Aluminum rated to 3000 psi and Ductile Iron rated to 5000 psi.
- See page viii for ordering cartridge/body and seals. Pressure ratings, material specifications on page xiv.



Check Valves

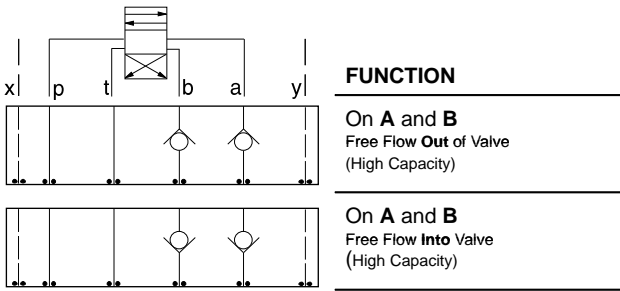


Order Retainer and Seal Kits separately.
(See Page 12.002)

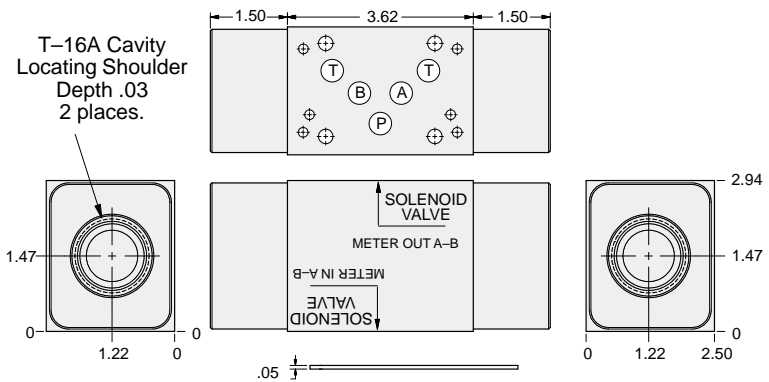


ALUMINUM		DUCTILE IRON	
Model Code	List Price	Model Code	List Price
DJL		DJL/S	

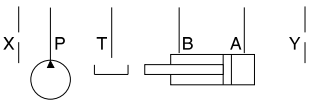
05xy CHECK



Check Valves



Order Retainer and Seal Kits separately.
(See Page 12.002)



ALUMINUM		DUCTILE IRON	
Model Code	List Price	Model Code	List Price
DJZ		DJZ/S	

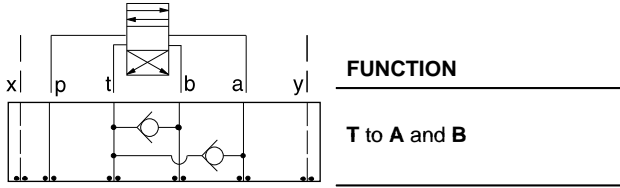
TYPICAL CARTRIDGES USED WITH BODIES SHOWN ABOVE			
	Check Valve, Free Flow Port 1 to Port 2 (Nose-to-Side)		
	CXFA Page 5.08 (use with DJL)		
	Check Valve, Free Flow Port 1 to Port 2 (Nose-to-Side)		
	CXHA Page 5.09 (use with DJZ)		
OTHER VALVES:	NFEC, FXEA		



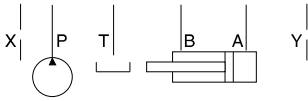
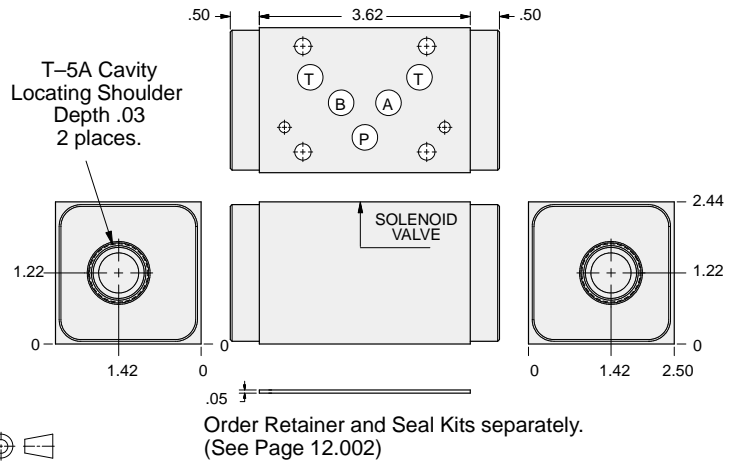
ISO 05 X,Y SANDWICH BODIES



- Aluminum rated to 3000 psi and Ductile Iron rated to 5000 psi.
- See page viii for ordering cartridge/body and seals. Pressure ratings, material specifications on page xiv.



Check Valves



ALUMINUM		DUCTILE IRON	
Model Code	List Price	Model Code	List Price
DJW		DJW/S	

05_{xy} CHECK

TYPICAL CARTRIDGES USED WITH BODIES SHOWN ABOVE			
	Check Valve, Free Flow Port 1 to Port 2 (Nose-to-Side)		
	CXFA Page 5.08		
OTHER VALVES:			

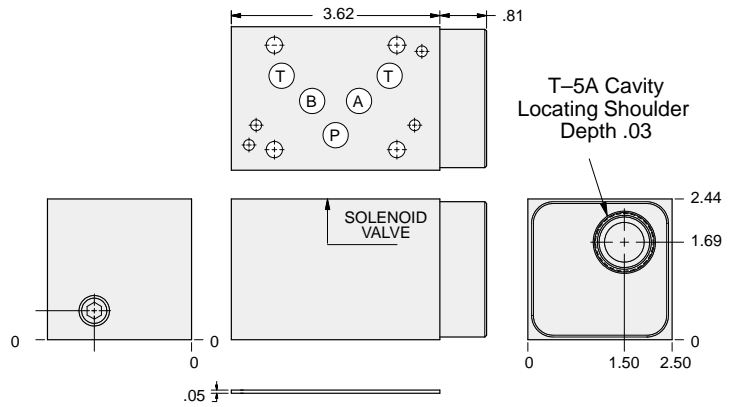
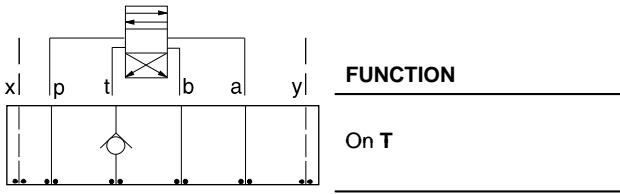


ISO 05 X,Y SANDWICH BODIES

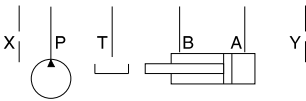


- Aluminum rated to 3000 psi and Ductile Iron rated to 5000 psi.
- See page viii for ordering cartridge/body and seals. Pressure ratings, material specifications on page xiv.

Check Valves



Order Retainer and Seal Kits separately.
(See Page 12.002)



Gage Port (Plugged)	ALUMINUM		DUCTILE IRON	
	Model Code	List Price	Model Code	List Price
.25 NPTF	DJT		DJT/S	
.25 BSPP	DJT/M		DJT/T	

05xy CHECK

TYPICAL CARTRIDGES USED WITH BODIES SHOWN ABOVE			
	Check Valve, Free Flow Port 1 to Port 2 (Nose-to-Side)		
	CXFA Page 5.08		
OTHER VALVES:			