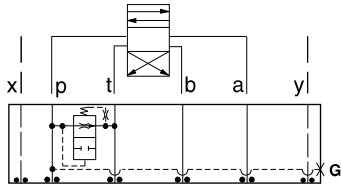




ISO 05 X,Y SANDWICH BODIES



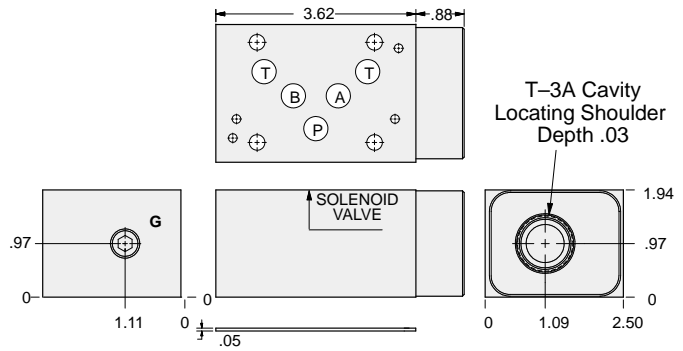
- Aluminum rated to 3000 psi and Ductile Iron rated to 5000 psi.
- See page viii for ordering cartridge/body and seals. Pressure ratings, material specifications on page xiv.



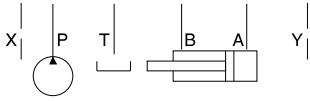
FUNCTION

Air-Bleed and Start-Up

Circuit Savers



Order Retainer and Seal Kits separately.
(See Page 12.002)



Gage Port (Plugged)	ALUMINUM		DUCTILE IRON	
	Model Code	List Price	Model Code	List Price
.25 NPTF	CJP		CJP/S	
.25 BSPP	CJP/M		CJP/T	

05_{xy} CIRCUIT SAVER

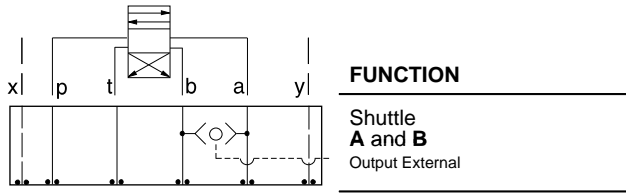
TYPICAL CARTRIDGES USED WITH BODIES SHOWN ABOVE			
	Air Bleed and Start-up Valve		
	NQEB Page 10.16		
OTHER VALVES:			



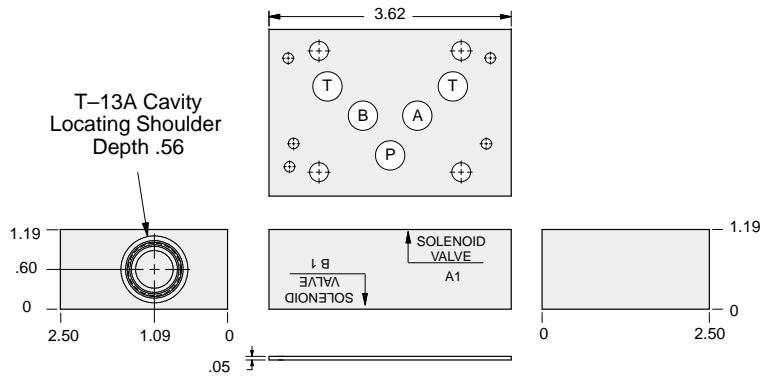
ISO 05 X,Y SANDWICH BODIES



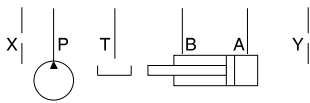
- Aluminum rated to 3000 psi and Ductile Iron rated to 5000 psi.
- See page viii for ordering cartridge/body and seals. Pressure ratings, material specifications on page xiv.



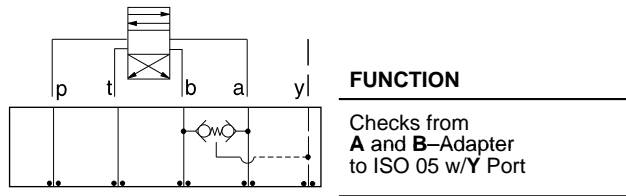
Circuit Savers



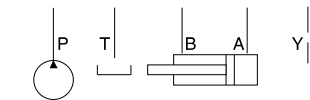
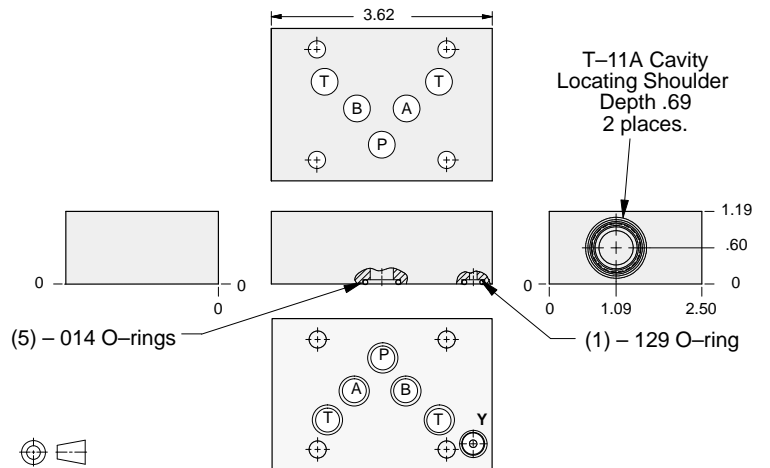
Order Retainer and Seal Kits separately.
(See Page 12.002)



ALUMINUM		DUCTILE IRON	
Model Code	List Price	Model Code	List Price
DJS		DJS/S	



Circuit Savers



ALUMINUM		DUCTILE IRON	
Model Code	List Price	Model Code	List Price
BJS		BJS/S	

05xy CIRCUIT SAVER

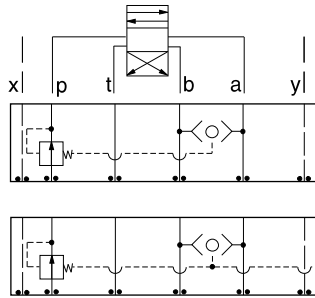
TYPICAL CARTRIDGES USED WITH BODIES SHOWN ABOVE			
<p>1-2 Ext.</p>	2 Port Shuttle Valve, Signal External		
	CSAA Page 10.09 (use with DJS)		
<p>1-2 3</p>	3 Port Back-to-Back Check Valve, Signal at Port 3		
	CDAB Page 10.10 (use with BJS)		
OTHER VALVES:			



ISO 05 X,Y SANDWICH BODIES



- Aluminum rated to 3000 psi and Ductile Iron rated to 5000 psi.
- See page viii for ordering cartridge/body and seals. Pressure ratings, material specifications on page xiv.

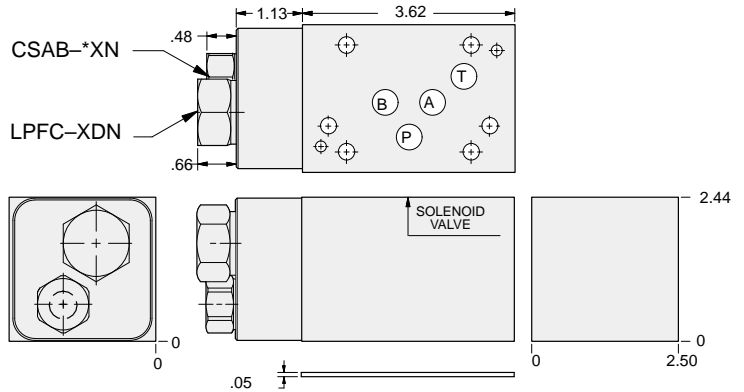


FUNCTION

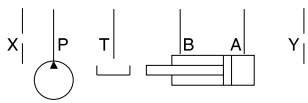
Pressure Compensator (Restrictive)

Pressure Compensator (Restrictive) w/Load-Sensing Port

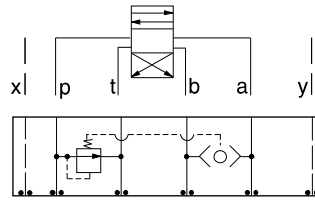
Circuit Savers



Order Retainer and Seal Kits separately. (See Page 12.002)



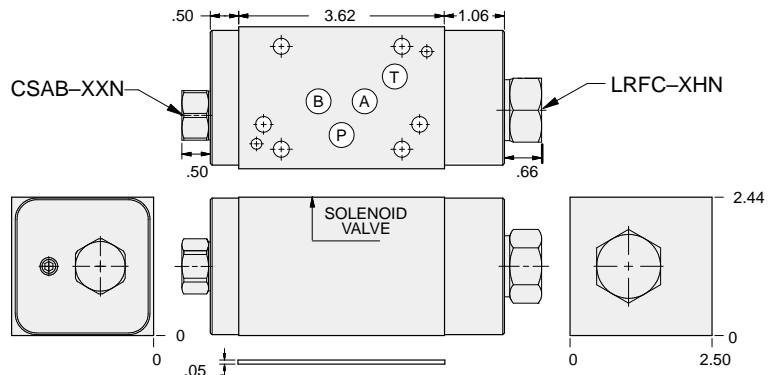
Shuttle Cartridge	Load-Sensing Port in Shuttle	ALUMINUM		DUCTILE IRON	
		Model Code	List Price	Model Code	List Price
CSAB-XXN	None	YFEK-XHN-BB		YFEK-XHN-BB/S	
CSAB-AXN	SAE-4	YFEQ-XHN-BB		YFEQ-XHN-BB/S	
CSAB-BXN	.25 BSPP	YFEQ-XHN-BB/M		YFEQ-XHN-BB/T	



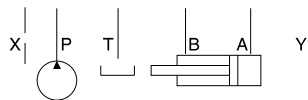
FUNCTION

Pressure Compensator (Bypass)

Circuit Savers



Order Retainer and Seal Kits separately. (See Page 12.002)



ALUMINUM		DUCTILE IRON	
Model Code	List Price	Model Code	List Price
YFEW-XHN-BB		YFEW-XHN-BB/S	

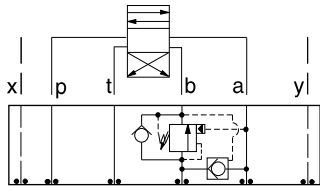
05_{xy} CIRCUIT SAVER



ISO 05 X,Y SANDWICH BODIES



- Aluminum rated to 3000 psi and Ductile Iron rated to 5000 psi.
- See page viii for ordering cartridge/body and seals. Pressure ratings, material specifications on page xiv.

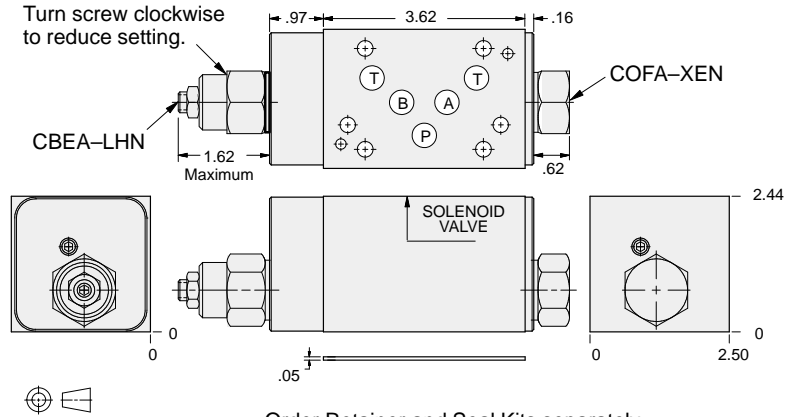


FUNCTION

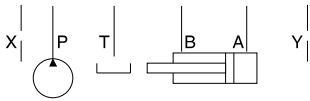
B to A
Regenerative

Circuit Savers

Turn screw clockwise to reduce setting.



Order Retainer and Seal Kits separately.
(See Page 12.002)



ALUMINUM		DUCTILE IRON	
<i>Model Code</i>	<i>List Price</i>	<i>Model Code</i>	<i>List Price</i>
YDEL-LHN-BB		YDEL-LHN-BB/S	

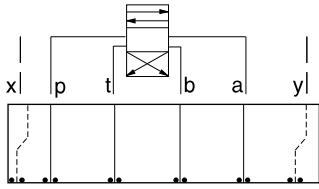
05_{xy} CIRCUIT SAVER



ISO 05 X,Y SANDWICH BODIES



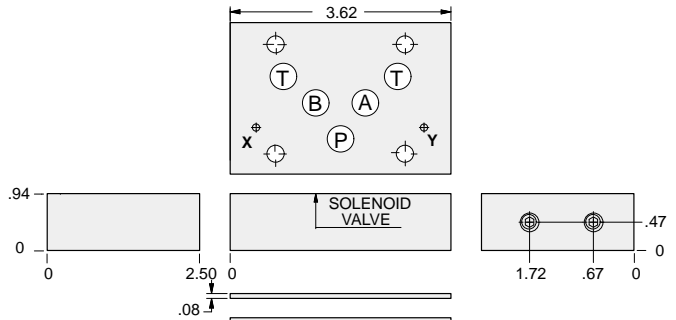
- Aluminum rated to 3000 psi and Ductile Iron rated to 5000 psi.
- See page viii for ordering cartridge/body and seals. Pressure ratings, material specifications on page xiv.



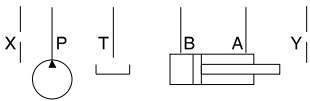
FUNCTION

ISO 05 with X and Y
Amer to Euro

Circuit Savers

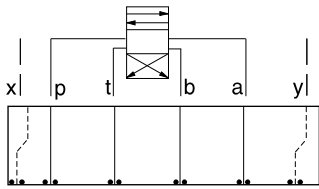


Order Seal Kit
#990-120-009
separately.



ALUMINUM		DUCTILE IRON	
<i>Model Code</i>	<i>List Price</i>	<i>Model Code</i>	<i>List Price</i>
ZSX		ZSX/S	

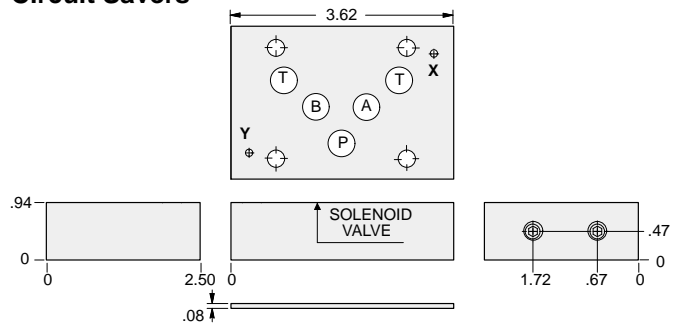
05_{xy} CIRCUIT SAVER



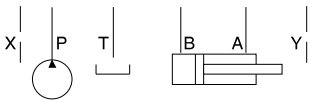
FUNCTION

ISO 05 with X and Y
Euro to Amer

Circuit Savers



Order Seal Kit
#990-120-012
separately.



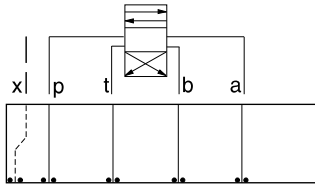
ALUMINUM		DUCTILE IRON	
<i>Model Code</i>	<i>List Price</i>	<i>Model Code</i>	<i>List Price</i>
ZSW		ZSW/S	



ISO 05 X,Y SANDWICH BODIES



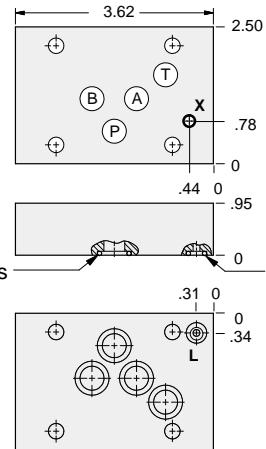
- Aluminum rated to 3000 psi and Ductile Iron rated to 5000 psi.
- See page viii for ordering cartridge/body and seals. Pressure ratings, material specifications on page xiv.



FUNCTION

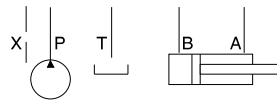
Bosch L Port to ISO 05 X Port (European)

Circuit Savers

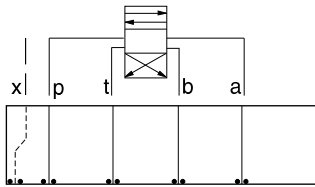


(4) – 014 O-rings

(1) – 010 O-ring



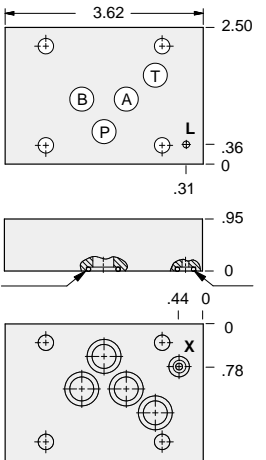
ALUMINUM		DUCTILE IRON	
Model Code	List Price	Model Code	List Price
ZJA		ZJA/S	



FUNCTION

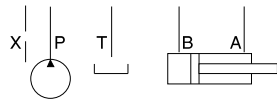
ISO 05 X Port (European) to Bosch L Port

Circuit Savers



(4) – 014 O-rings

(1) – 010 O-ring



ALUMINUM		DUCTILE IRON	
Model Code	List Price	Model Code	List Price
ZJB		ZJB/S	

05_{xy} CIRCUIT SAVER