

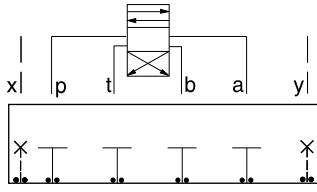


ISO 05 X,Y SANDWICH BODIES



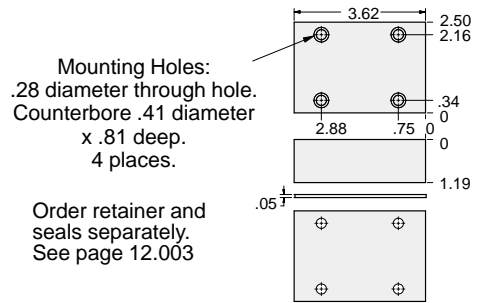
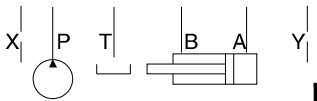
- Aluminum rated to 3000 psi and Ductile Iron rated to 5000 psi.
- See page viii for ordering cartridge/body and seals. Pressure ratings, material specifications on page xiv.

Cover Plates



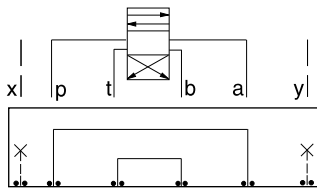
FUNCTION

All Ports Blocked



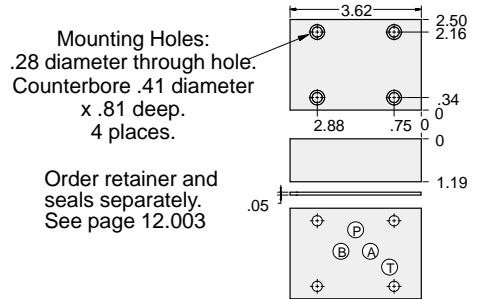
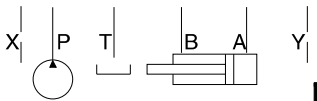
ALUMINIUM		SG IRON	
Model Code	List Price	Model Code	List Price
ZJP		ZJP/S	

Cover Plates



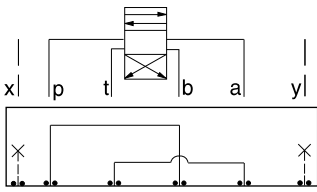
FUNCTION

P to A and B to T



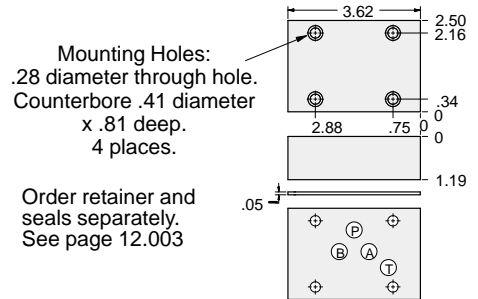
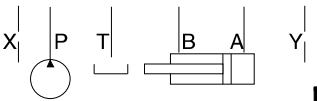
ALUMINIUM		SG IRON	
Model Code	List Price	Model Code	List Price
ZJM		ZJM/S	

Cover Plates



FUNCTION

P to B and A to T



ALUMINIUM		SG IRON	
Model Code	List Price	Model Code	List Price
ZJJ		ZJJ/S	

05xy COVER PLATE

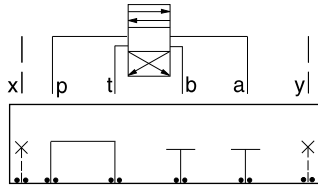


ISO 05 X,Y SANDWICH BODIES



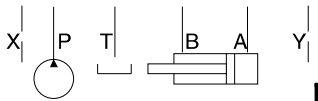
- Aluminum rated to 3000 psi and Ductile Iron rated to 5000 psi.
- See page viii for ordering cartridge/body and seals. Pressure ratings, material specifications on page xiv.

Cover Plates



FUNCTION

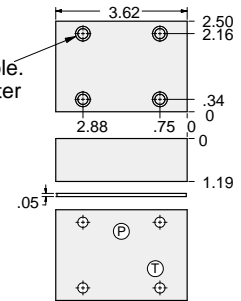
P to T
A and B blocked



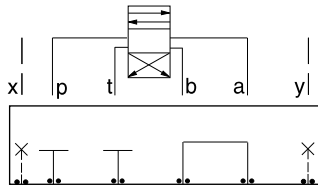
ALUMINIUM		SG IRON	
Model Code	List Price	Model Code	List Price
ZJN		ZJN/S	

Mounting Holes:
.28 diameter through hole.
Counterbore .41 diameter
x .81 deep.
4 places.

Order retainer and
seals separately.
See page 12.003

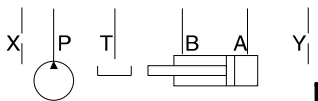


Cover Plates



FUNCTION

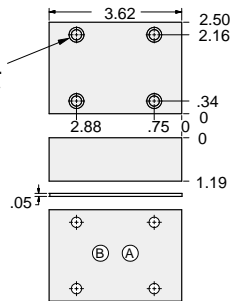
A to B
P and T blocked



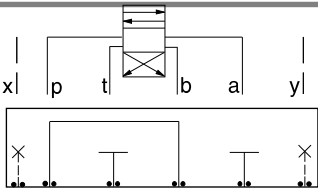
ALUMINIUM		SG IRON	
Model Code	List Price	Model Code	List Price
ZJL		ZJL/S	

Mounting Holes:
.28 diameter through hole.
Counterbore .41 diameter
x .81 deep.
4 places.

Order retainer and
seals separately.
See page 12.003

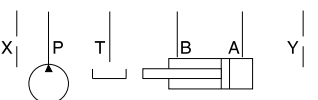


Cover Plates



FUNCTION

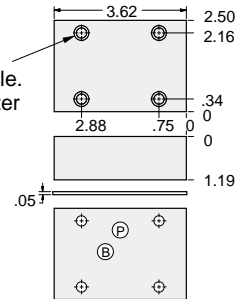
P to B
A and T blocked



ALUMINIUM		SG IRON	
Model Code	List Price	Model Code	List Price
ZJK		ZJK/S	

Mounting Holes:
.28 diameter through hole.
Counterbore .41 diameter
x .81 deep.
4 places.

Order retainer and
seals separately.
See page 12.003



05xy COVER PLATE