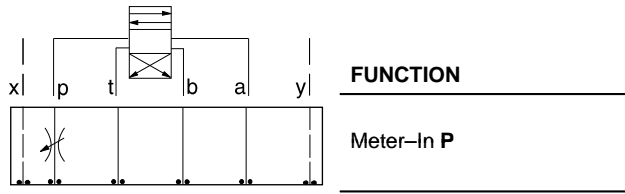




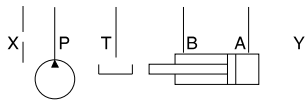
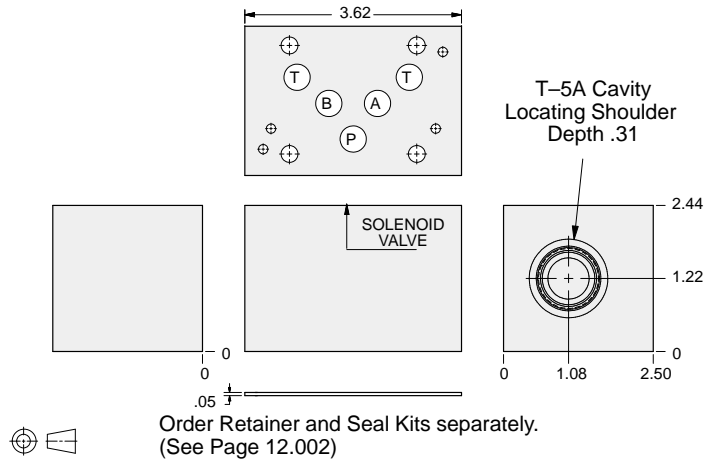
ISO 05 X,Y SANDWICH BODIES



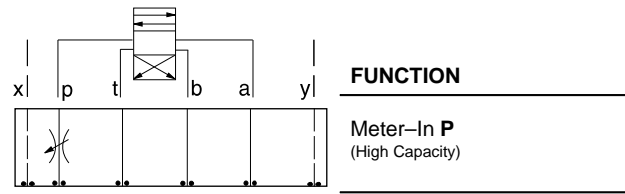
- Aluminum rated to 3000 psi and Ductile Iron rated to 5000 psi.
- See page viii for ordering cartridge/body and seals. Pressure ratings, material specifications on page xiv.



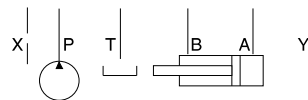
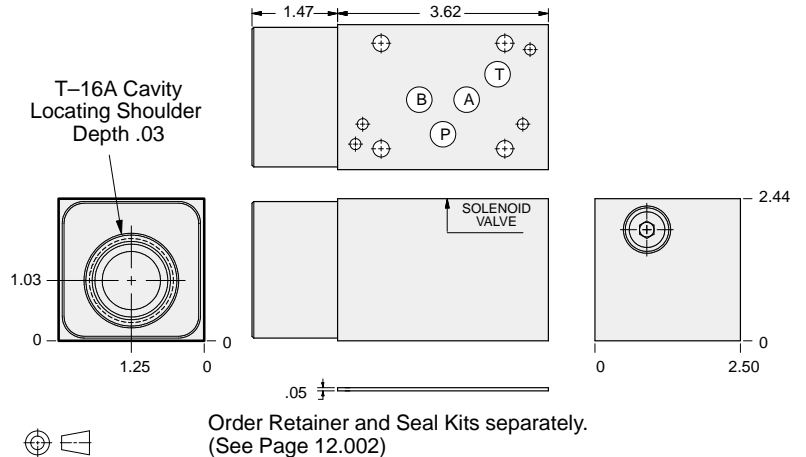
Flow Control Valves



ALUMINUM		DUCTILE IRON	
Model Code	List Price	Model Code	List Price
DJP		DJP/S	



Flow Control Valves



ALUMINUM		DUCTILE IRON	
Model Code	List Price	Model Code	List Price
DJO		DJO/S	

05xy FLOW CONTROL

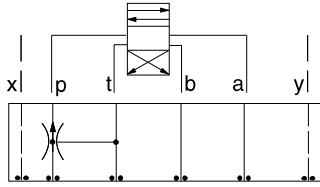
TYPICAL CARTRIDGES USED WITH BODIES SHOWN ABOVE			
	Fully Adjustable Needle Valve		
	NF*C Page 5.12, 5.13		
	Fixed Orifice, Pressure-Compensated Flow Control		
	FX*A Page 5.20, 5.21		
OTHER VALVES:			



ISO 05 X,Y SANDWICH BODIES



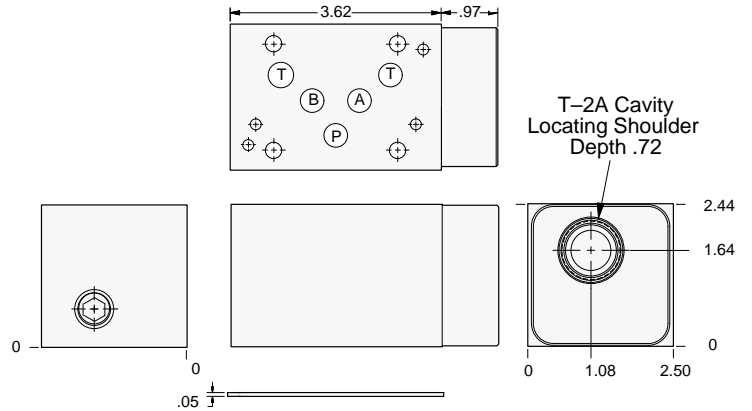
- Aluminum rated to 3000 psi and Ductile Iron rated to 5000 psi.
- See page viii for ordering cartridge/body and seals. Pressure ratings, material specifications on page xiv.



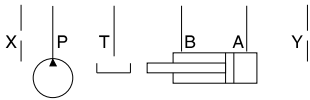
FUNCTION

Priority Flow on P

Flow Control Valves



Order Retainer and Seal Kits separately. (See Page 12.002)



ALUMINUM		DUCTILE IRON	
Model Code	List Price	Model Code	List Price
DJN		DJN/S	

05xy FLOW CONTROL

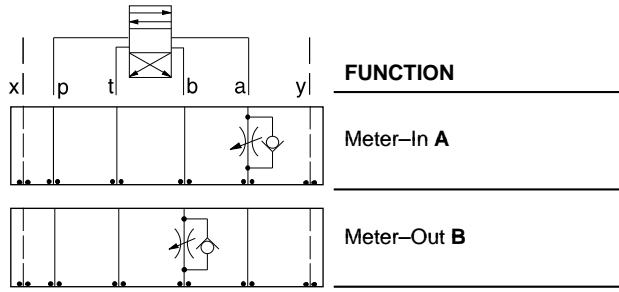
TYPICAL CARTRIDGES USED WITH BODIES SHOWN ABOVE			
	Priority Flow Control, Bypass/Restrictive, Fixed Orifice		
	FRDA Page 6.02		
OTHER VALVES:			



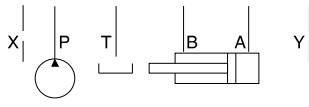
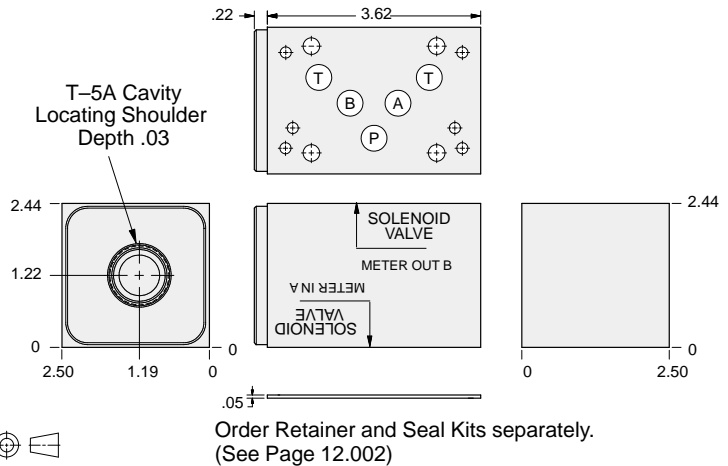
ISO 05 X,Y SANDWICH BODIES



- Aluminum rated to 3000 psi and Ductile Iron rated to 5000 psi.
- See page viii for ordering cartridge/body and seals. Pressure ratings, material specifications on page xiv.

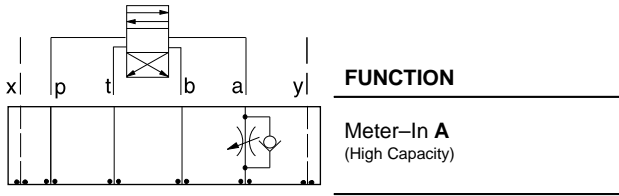


Flow Control Valves

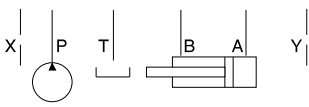
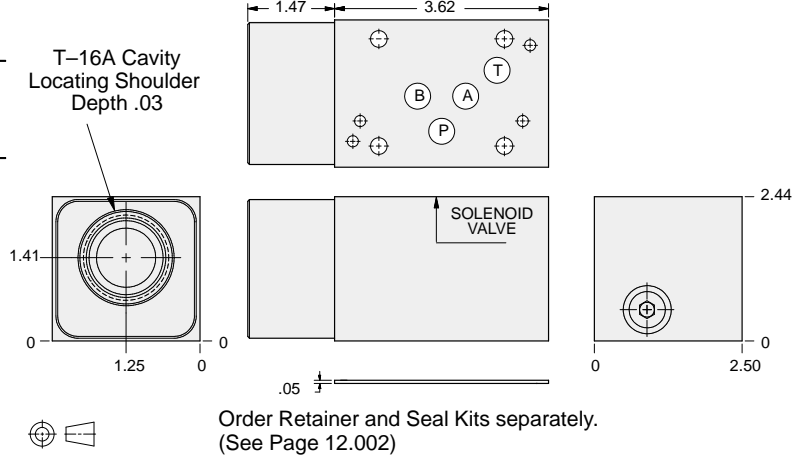


ALUMINUM		DUCTILE IRON	
Model Code	List Price	Model Code	List Price
DJB		DJB/S	

05xy FLOW CONTROL



Flow Control Valves



ALUMINUM		DUCTILE IRON	
Model Code	List Price	Model Code	List Price
DJC		DJC/S	

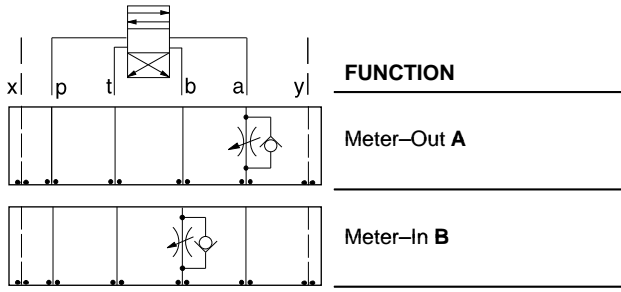
TYPICAL CARTRIDGES USED WITH BODIES SHOWN ABOVE			
	Fully Adjustable Needle Valve NF*C Page 5.12, 5.13		Fixed Orifice, Pressure-Compensated Flow Control FX*A Page 5.20, 5.21
	Fully Adjustable Needle Valve with Reverse Free Flow Check NC*B Page 5.16, 5.17		Fixed Orifice, Pressure-Compensated Flow Control with Reverse Free Flow Check FC*B Page 5.22, 5.23
	Fully Adjustable Needle Valve with Reverse Free Flow Check, Low Flow NC*C Page 5.18, 5.19		Fully Adjustable, Pressure-Compensated Flow Control with Reverse Free Flow Check FDCB Page 5.24, FDEA Page 5.25
OTHER VALVES:	CNEC, CNGC		



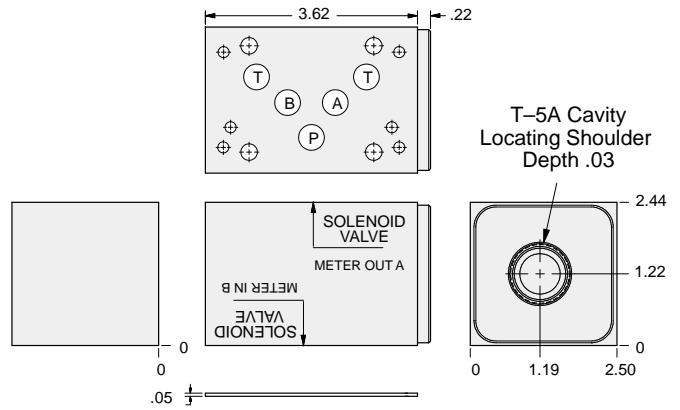
ISO 05 X,Y SANDWICH BODIES



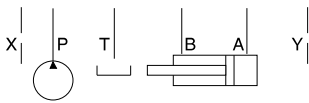
- Aluminum rated to 3000 psi and Ductile Iron rated to 5000 psi.
- See page viii for ordering cartridge/body and seals. Pressure ratings, material specifications on page xiv.



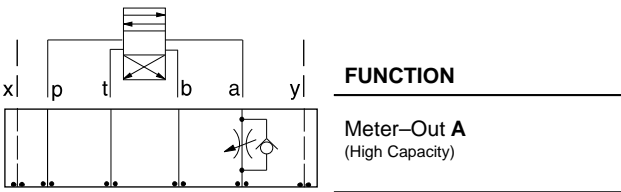
Flow Control Valves



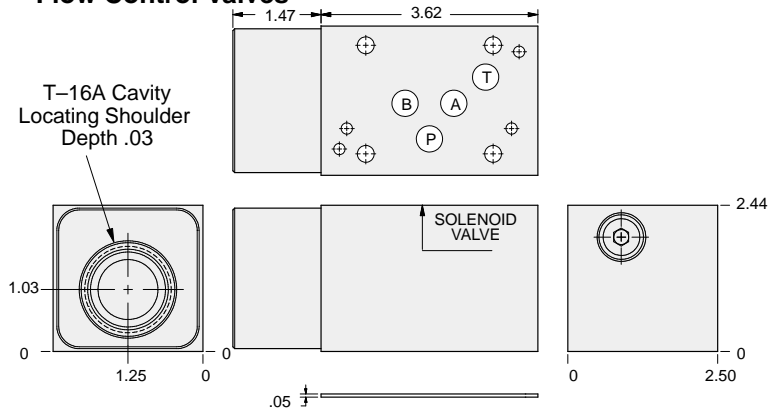
Order Retainer and Seal Kits separately.
(See Page 12.002)



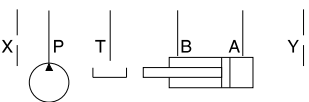
ALUMINUM		DUCTILE IRON	
Model Code	List Price	Model Code	List Price
DJA		DJA/S	



Flow Control Valves



Order Retainer and Seal Kits separately.
(See Page 12.002)



ALUMINUM		DUCTILE IRON	
Model Code	List Price	Model Code	List Price
DJD		DJD/S	

05xy FLOW CONTROL

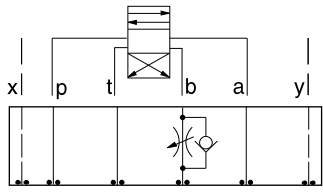
TYPICAL CARTRIDGES USED WITH BODIES SHOWN ABOVE			
	Fully Adjustable Needle Valve		Fixed Orifice, Pressure-Compensated Flow Control
	NF*C Page 5.12, 5.13		FX*A Page 5.20, 5.21
	Fully Adjustable Needle Valve with Reverse Free Flow Check		Fixed Orifice, Pressure-Compensated Flow Control with Reverse Free Flow Check
	NC*B Page 5.16, 5.17		FC*B Page 5.22, 5.23
	Fully Adjustable Needle Valve with Reverse Free Flow Check, Low Flow		Fully Adjustable, Pressure-Compensated Flow Control with Reverse Free Flow Check
	NC*C Page 5.18, 5.19		FDCB Page 5.24, FDEA Page 5.25
OTHER VALVES:	CNEC, CNGC		



ISO 05 X,Y SANDWICH BODIES



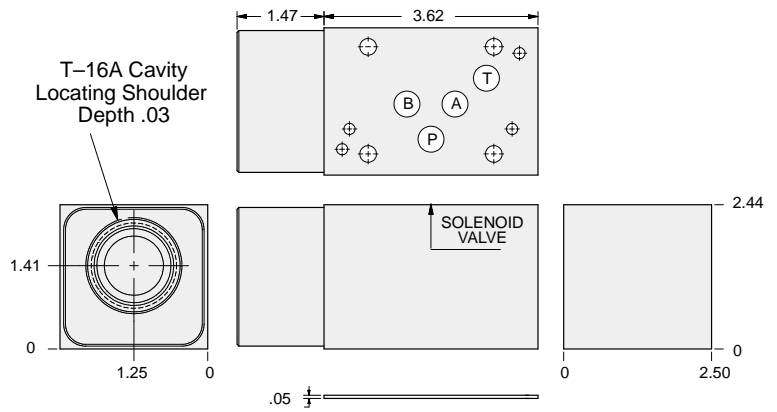
- Aluminum rated to 3000 psi and Ductile Iron rated to 5000 psi.
- See page viii for ordering cartridge/body and seals. Pressure ratings, material specifications on page xiv.



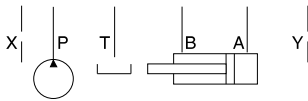
FUNCTION

Meter-In B
(High Capacity)

Flow Control Valves

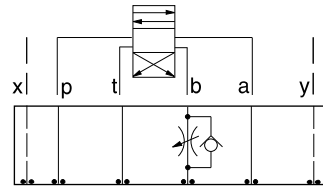


Order Retainer and Seal Kits separately.
(See Page 12.002)



ALUMINUM		DUCTILE IRON	
Model Code	List Price	Model Code	List Price
DJE		DJE/S	

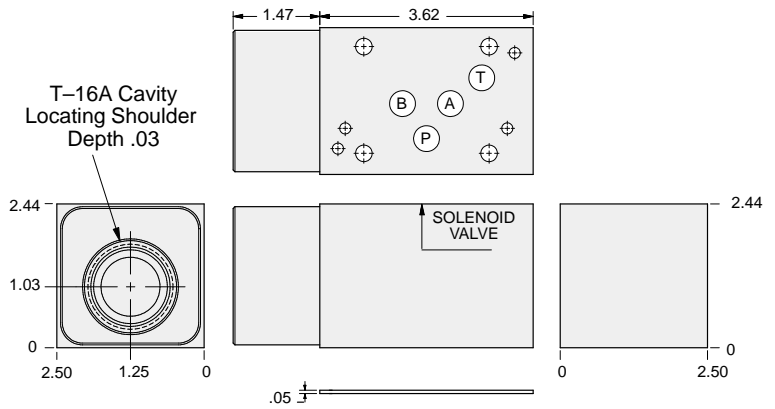
05xy FLOW CONTROL



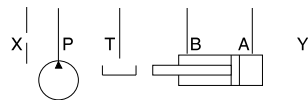
FUNCTION

Meter-Out B
(High Capacity)

Flow Control Valves



Order Retainer and Seal Kits separately.
(See Page 12.002)



ALUMINUM		DUCTILE IRON	
Model Code	List Price	Model Code	List Price
DJF		DJF/S	

TYPICAL CARTRIDGES USED WITH BODIES SHOWN ABOVE

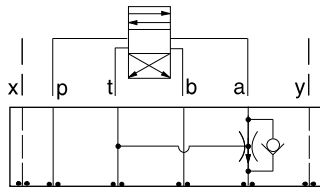
	Fully Adjustable Needle Valve		Fixed Orifice, Pressure-Compensated Flow Control
	NFEC Page 5.13		FXEA Page 5.21
	Fully Adjustable Needle Valve with Reverse Free Flow Check		Fixed Orifice, Pressure-Compensated Flow Control with Reverse Free Flow Check
	NCFB Page 5.17		FCEB Page 5.23
	Fully Adjustable Needle Valve with Reverse Free Flow Check, Low Flow		Fully Adjustable, Pressure-Compensated Flow Control with Reverse Free Flow Check
	NCFC Page 5.19		FDEA Page 5.25
OTHER VALVES:	CNGC		



ISO 05 X,Y SANDWICH BODIES



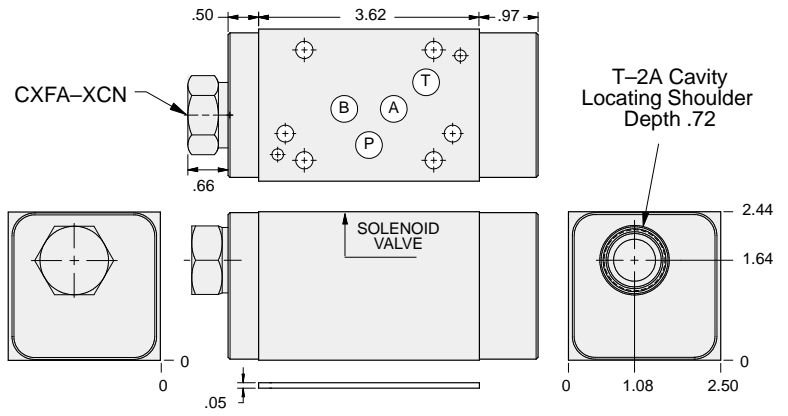
- Aluminum rated to 3000 psi and Ductile Iron rated to 5000 psi.
- See page viii for ordering cartridge/body and seals. Pressure ratings, material specifications on page xiv.



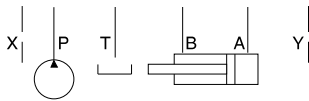
FUNCTION

Priority Flow
On A, Bypass to T
Reverse FF Check

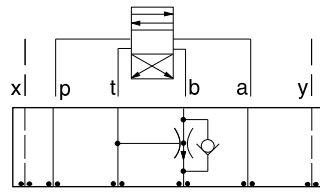
Flow Control Valves



Order Retainer and Seal Kits separately.
(See Page 12.002)



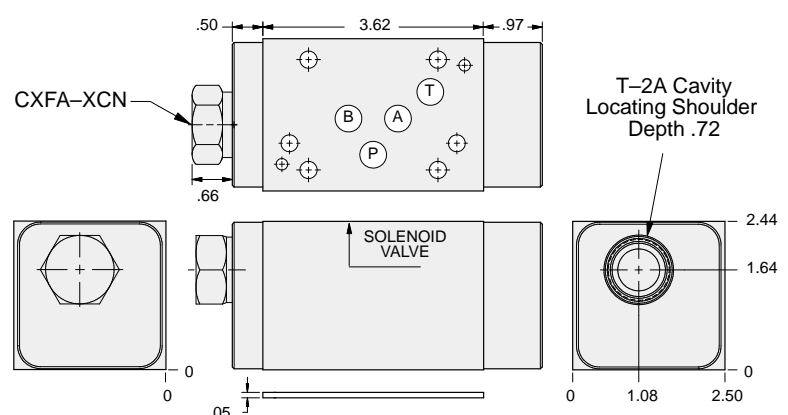
ALUMINUM		DUCTILE IRON	
<i>Model Code</i>	<i>List Price</i>	<i>Model Code</i>	<i>List Price</i>
WHY		WHY/S	



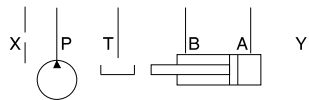
FUNCTION

Priority Flow
On B, Bypass to T
Reverse FF Check

Flow Control Valves



Order Retainer and Seal Kits separately.
(See Page 12.002)



ALUMINUM		DUCTILE IRON	
<i>Model Code</i>	<i>List Price</i>	<i>Model Code</i>	<i>List Price</i>
WHZ		WHZ/S	

05xy FLOW CONTROL

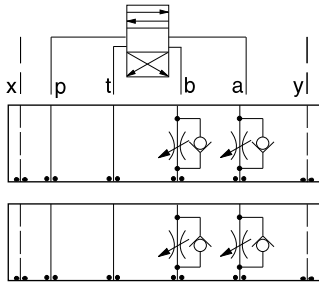
TYPICAL CARTRIDGES USED WITH BODIES SHOWN ABOVE			
	Priority Flow Control, Bypass/Restrictive, Fixed Orifice		
	FRDA Page 6.02		
OTHER VALVES:			



ISO 05 X,Y SANDWICH BODIES



- Aluminum rated to 3000 psi and Ductile Iron rated to 5000 psi.
- See page viii for ordering cartridge/body and seals. Pressure ratings, material specifications on page xiv.

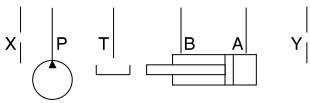
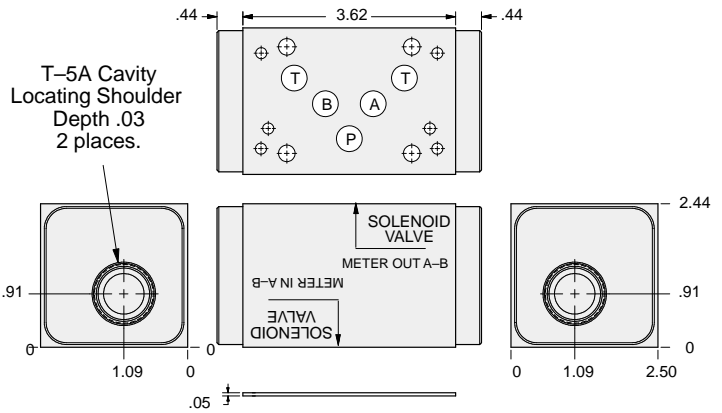


FUNCTION

Meter-In
A and B

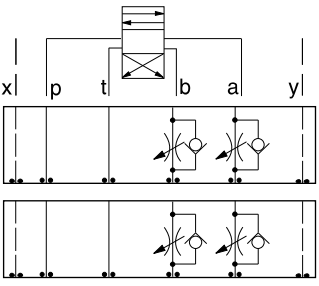
Meter-Out
A and B

Flow Control Valves



ALUMINUM		DUCTILE IRON	
Model Code	List Price	Model Code	List Price
DJY		DJY/S	

05xy FLOW CONTROL

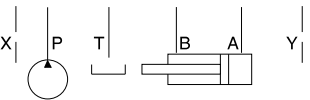
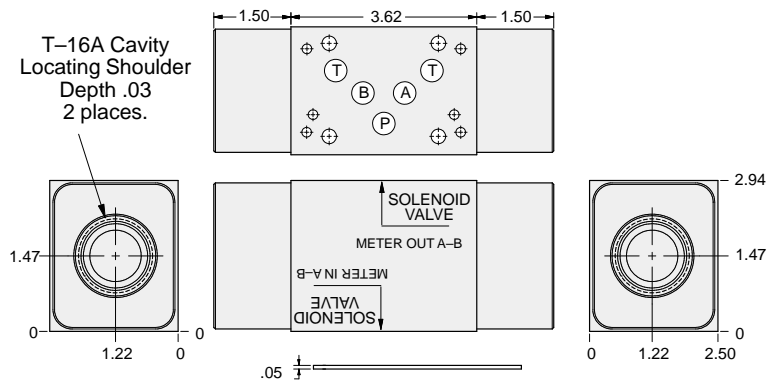


FUNCTION

Meter-In
A and B
(High Capacity)

Meter-Out
A and B
(High Capacity)

Flow Control Valves



ALUMINUM		DUCTILE IRON	
Model Code	List Price	Model Code	List Price
DJZ		DJZ/S	

TYPICAL CARTRIDGES USED WITH BODIES SHOWN ABOVE

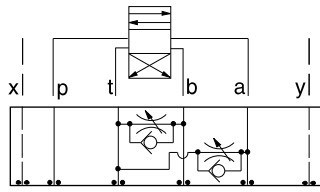
	Fully Adjustable Needle Valve		Fixed Orifice, Pressure-Compensated Flow Control
	NF*C Page 5.12, 5.13		FX*A Page 5.20, 5.21
	Fully Adjustable Needle Valve with Reverse Free Flow Check		Fixed Orifice, Pressure-Compensated Flow Control with Reverse Free Flow Check
	NC*B Page 5.16, 5.17		FC*B Page 5.22, 5.23
	Fully Adjustable Needle Valve with Reverse Free Flow Check, Low Flow		Fully Adjustable, Pressure-Compensated Flow Control with Reverse Free Flow Check
	NC*C Page 5.18, 5.19		FDCB Page 5.24, FDEA Page 5.25
OTHER VALVES:	CNEC, CNGC		



ISO 05 X,Y SANDWICH BODIES



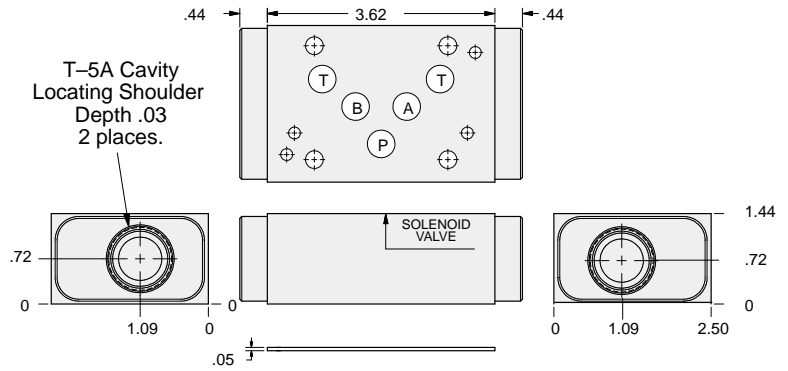
- Aluminum rated to 3000 psi and Ductile Iron rated to 5000 psi.
- See page viii for ordering cartridge/body and seals. Pressure ratings, material specifications on page xiv.



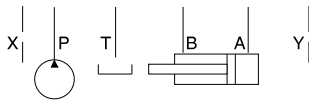
FUNCTION

Bleed-Off
A and B to T

Flow Control Valves



Order Retainer and Seal Kits separately.
(See Page 12.002)



ALUMINUM		DUCTILE IRON	
Model Code	List Price	Model Code	List Price
DJX		DJX/S	

05xy FLOW CONTROL

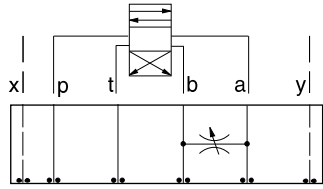
TYPICAL CARTRIDGES USED WITH BODIES SHOWN ABOVE			
	Fully Adjustable Needle Valve		Fixed Orifice, Pressure-Compensated Flow Control
	NFDC Page 5.12		FXDA Page 5.20
	Fully Adjustable Needle Valve with Reverse Free Flow Check		Fixed Orifice, Pressure-Compensated Flow Control with Reverse Free Flow Check
	NCEB Page 5.16		FCDB Page 5.22
	Fully Adjustable Needle Valve with Reverse Free Flow Check, Low Flow		Fully Adjustable, Pressure-Compensated Flow Control with Reverse Free Flow Check
	NCEC Page 5.18		FDCB Page 5.24
OTHER VALVES:	CNEC, CNGC		



ISO 05 X,Y SANDWICH BODIES



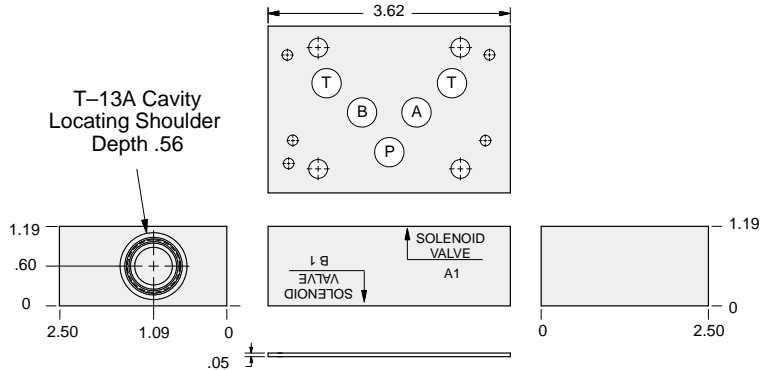
- Aluminum rated to 3000 psi and Ductile Iron rated to 5000 psi.
- See page viii for ordering cartridge/body and seals. Pressure ratings, material specifications on page xiv.



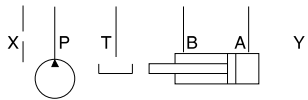
FUNCTION

Bleed-Off
A to B and
B to A

Flow Control Valves



Order Retainer and Seal Kits separately.
(See Page 12.002)



ALUMINUM		DUCTILE IRON	
Model Code	List Price	Model Code	List Price
DJS		DJS/S	

05xy FLOW CONTROL

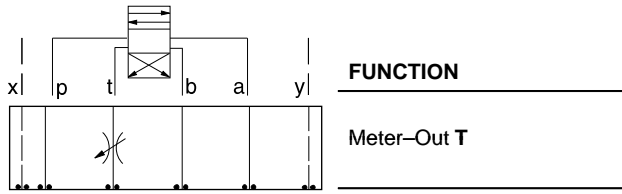
TYPICAL CARTRIDGES USED WITH BODIES SHOWN ABOVE			
	Fixed Orifice Restrictor Valve with Reverse Free Flow Check NFCC Page 5.12		Fixed Orifice, Pressure-Compensated Flow Control FXCA Page 5.20
	Fully Adjustable Needle Valve with Reverse Free Flow Check NCCB Page 5.16		Fixed Orifice, Pressure-Compensated Flow Control with Reverse Free Flow Check FCCB Page 5.22
	Fully Adjustable Needle Valve with Reverse Free Flow Check, Low Flow NCCC Page 5.18		Fully Adjustable, Pressure-Compensated Flow Control with Reverse Free Flow Check FDCA Page 5.24
OTHER VALVES:	CNEC, CNGC		



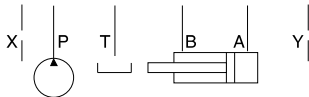
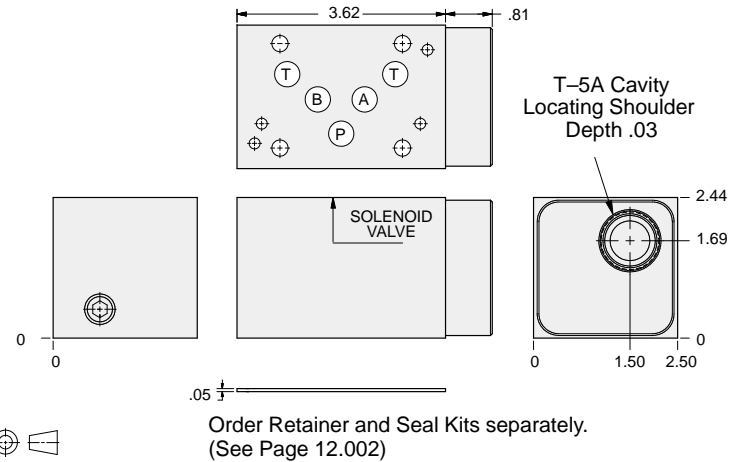
ISO 05 X,Y SANDWICH BODIES



- Aluminum rated to 3000 psi and Ductile Iron rated to 5000 psi.
- See page viii for ordering cartridge/body and seals. Pressure ratings, material specifications on page xiv.



Flow Control Valves



ALUMINUM		DUCTILE IRON	
Model Code	List Price	Model Code	List Price
DJT		DJT/S	

05xy FLOW CONTROL

TYPICAL CARTRIDGES USED WITH BODIES SHOWN ABOVE			
	Fully Adjustable Needle Valve NFDC Page 5.12		Fixed Orifice, Pressure-Compensated Flow Control FXDA Page 5.20
	Fully Adjustable Needle Valve with Reverse Free Flow Check NCEB Page 5.16		Fixed Orifice, Pressure-Compensated Flow Control with Reverse Free Flow Check FCDB Page 5.22
	Fully Adjustable Needle Valve with Reverse Free Flow Check, Low Flow NCEC Page 5.18		Fully Adjustable, Pressure-Compensated Flow Control with Reverse Free Flow Check FDCB Page 5.24
OTHER VALVES:	CNEC		

