

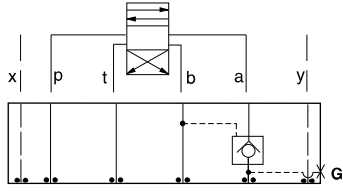


ISO 05 X,Y SANDWICH BODIES



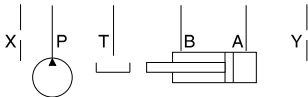
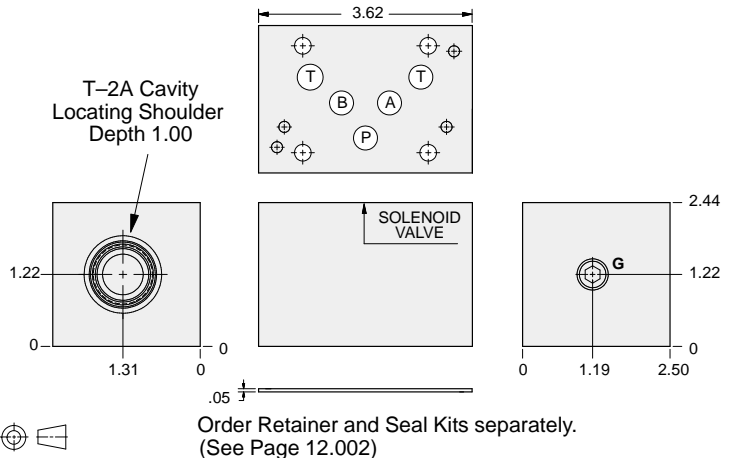
- Aluminum rated to 3000 psi and Ductile Iron rated to 5000 psi.
- See page viii for ordering cartridge/body and seals. Pressure ratings, material specifications on page xiv.

Pilot Operated Check Valves



FUNCTION

On A
Pilot from B



Gage Port (Plugged)	ALUMINUM		DUCTILE IRON	
	Model Code	List Price	Model Code	List Price
.25 NPTF	BJA		BJA/S	
.25 BSPP	BJA/M		BJA/T	

05xy P.O. CHECK

TYPICAL CARTRIDGES USED WITH BODIES SHOWN ABOVE			
	Pilot-to-Open Check Valve, 3:1 Pilot Ratio		
	CKEB Page 4.16		
OTHER VALVES:			

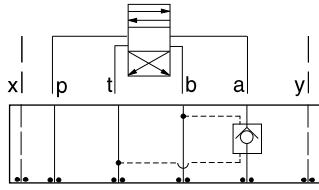


ISO 05 X,Y SANDWICH BODIES



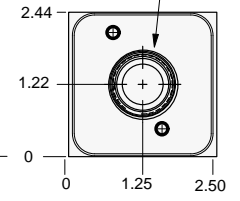
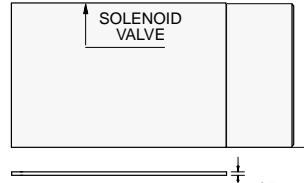
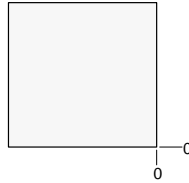
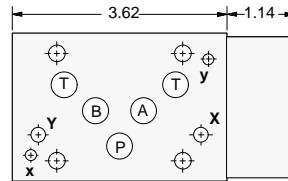
- Aluminum rated to 3000 psi and Ductile Iron rated to 5000 psi.
- See page viii for ordering cartridge/body and seals. Pressure ratings, material specifications on page xiv.

Pilot Operated Check Valves

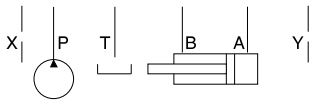


FUNCTION

On **A**
Pilot from **B**
Vent to **T**

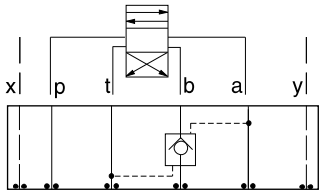


Order Retainer and Seal Kits separately.
(See Page 12.002)



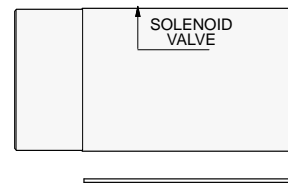
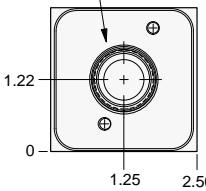
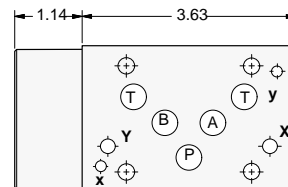
ALUMINUM		DUCTILE IRON	
Model Code	List Price	Model Code	List Price
NJA		NJA/S	

Pilot Operated Check Valves

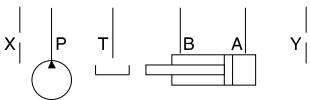


FUNCTION

On **B**
Pilot from **A**
Vent to **T**



Order Retainer and Seal Kits separately.
(See Page 12.002)



ALUMINUM		DUCTILE IRON	
Model Code	List Price	Model Code	List Price
NJB		NJB/S	

05xy P.O. CHECK

TYPICAL CARTRIDGES USED WITH BODIES SHOWN ABOVE

	Vented Pilot-to-Open Check Valve, 3:1 Pilot Ratio		
	CVEV Page 4.22		
OTHER VALVES:			

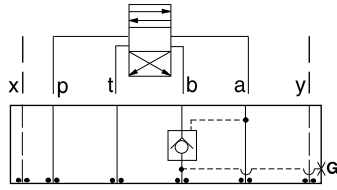


ISO 05 X,Y SANDWICH BODIES



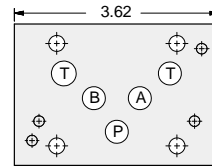
- Aluminum rated to 3000 psi and Ductile Iron rated to 5000 psi.
- See page viii for ordering cartridge/body and seals. Pressure ratings, material specifications on page xiv.

Pilot Operated Check Valves

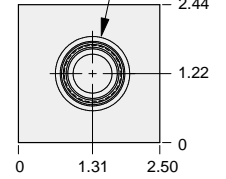
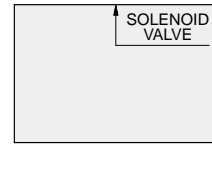
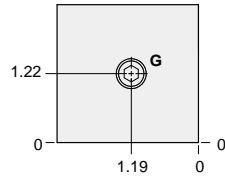


FUNCTION

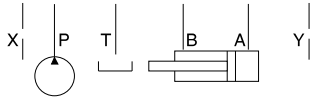
On B
Pilot from A



T-2A Cavity
Locating Shoulder
Depth 1.00



Order Retainer and Seal Kits separately.
(See Page 12.002)



Gage Port (Plugged)	ALUMINUM		DUCTILE IRON	
	Model Code	List Price	Model Code	List Price
.25 NPTF	BJB		BJB/S	
.25 BSPP	BJB/M		BJB/T	

05xy P.O. CHECK

TYPICAL CARTRIDGES USED WITH BODIES SHOWN ABOVE

	<i>Pilot-to-Open Check Valve, 3:1 Pilot Ratio</i>		
	CKEB Page 4.16		
OTHER VALVES:			

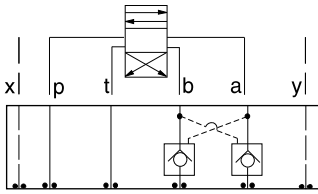


ISO 05 X,Y SANDWICH BODIES



- Aluminum rated to 3000 psi and Ductile Iron rated to 5000 psi.
- See page viii for ordering cartridge/body and seals. Pressure ratings, material specifications on page xiv.

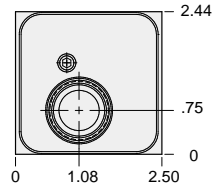
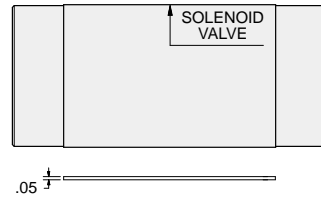
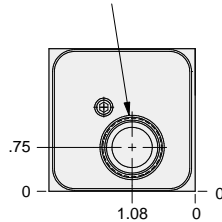
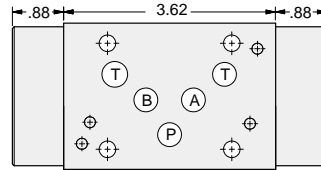
Pilot Operated Check Valves



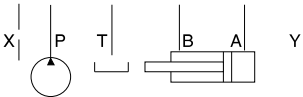
FUNCTION

On A and B
Cross-Piloted

T-2A Cavity
Locating Shoulder
Depth .73
2 places.



Order Retainer and Seal Kits separately.
(See Page 12.002)



ALUMINUM		DUCTILE IRON	
Model Code	List Price	Model Code	List Price
BJY		BJY/S	

05xy P.O. CHECK

TYPICAL CARTRIDGES USED WITH BODIES SHOWN ABOVE			
	Pilot-to-Open Check Valve, 3:1 Pilot Ratio		
	CKEB Page 3.16		
OTHER VALVES:			

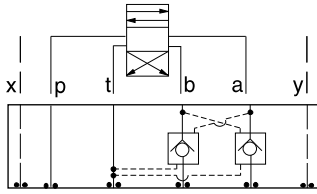


ISO 05 X,Y SANDWICH BODIES



- Aluminum rated to 3000 psi and Ductile Iron rated to 5000 psi.
- See page viii for ordering cartridge/body and seals. Pressure ratings, material specifications on page xiv.

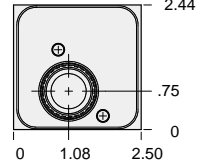
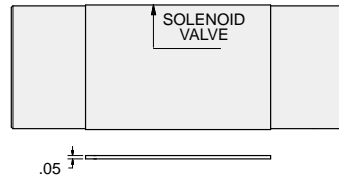
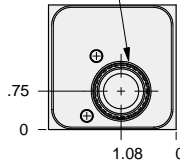
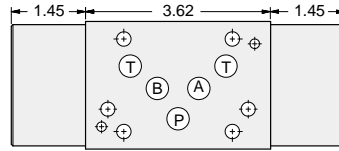
Pilot Operated Check Valves



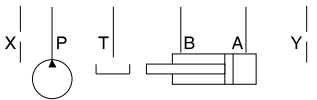
FUNCTION

On **A** and **B**
Cross-Piloted
Vents to **T**

T-22A Cavity
Locating Shoulder
Depth 1.31
2 places.



Order Retainer and Seal Kits separately.
(See Page 12.002)



ALUMINUM		DUCTILE IRON	
Model Code	List Price	Model Code	List Price
NJY		NJY/S	

05xy P.O. CHECK

TYPICAL CARTRIDGES USED WITH BODIES SHOWN ABOVE			
	Vented Pilot-to-Open Check Valve, 3:1 Pilot Ratio		
	CVEV Page 4.22		
OTHER VALVES:			