

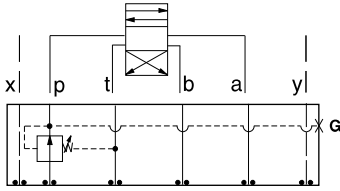


# ISO 05 X,Y SANDWICH BODIES



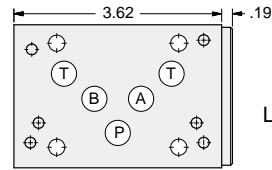
- Aluminum rated to 3000 psi and Ductile Iron rated to 5000 psi.
- See page viii for ordering cartridge/body and seals. Pressure ratings, material specifications on page xiv.

## Reducing Valves

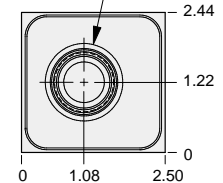
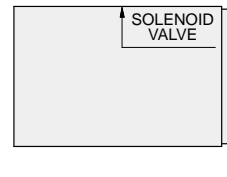
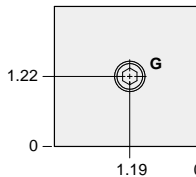


### FUNCTION

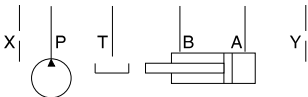
On P  
Drained to T



T-2A Cavity  
Locating Shoulder  
Depth .75



Order Retainer and Seal Kits separately.  
(See Page 12.002)



Gage Port (Plugged)	ALUMINUM		DUCTILE IRON	
	Model Code	List Price	Model Code	List Price
.25 NPTF	<b>BJP</b>		<b>BJP/S</b>	
.25 BSPP	<b>BJP/M</b>		<b>BJP/T</b>	

05xy REDUCING

### TYPICAL CARTRIDGES USED WITH BODIES SHOWN ABOVE

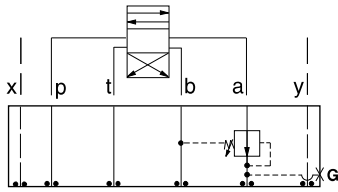
	<i>Pilot Operated Reducing Valve</i>		
	<b>PBFB Page 3.06</b>		
	<i>Air Controlled, Pilot Operated Reducing Valve</i>		
	<b>PBFC Page 3.08</b>		
<b>OTHER VALVES:</b>			



# ISO 05 X,Y SANDWICH BODIES



- Aluminum rated to 3000 psi and Ductile Iron rated to 5000 psi.
- See page viii for ordering cartridge/body and seals. Pressure ratings, material specifications on page xiv.



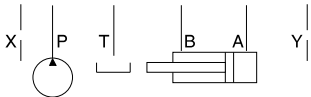
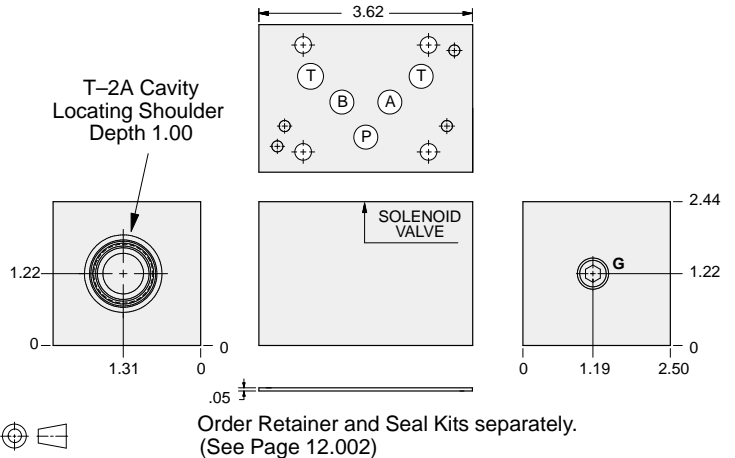
**FUNCTION**

---

On A  
Drained to B

---

## Reducing Valves



Gage Port (Plugged)	ALUMINUM		DUCTILE IRON	
	Model Code	List Price	Model Code	List Price
.25 NPTF	<b>BJA</b>		<b>BJA/S</b>	
.25 BSPP	<b>BJA/M</b>		<b>BJA/T</b>	

05xy REDUCING

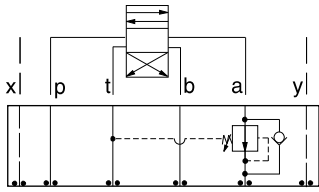
TYPICAL CARTRIDGES USED WITH BODIES SHOWN ABOVE			
	Pilot Operated Reducing Valve		
	PBFB Page 3.06		
OTHER VALVES:			



# ISO 05 X,Y SANDWICH BODIES



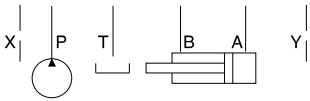
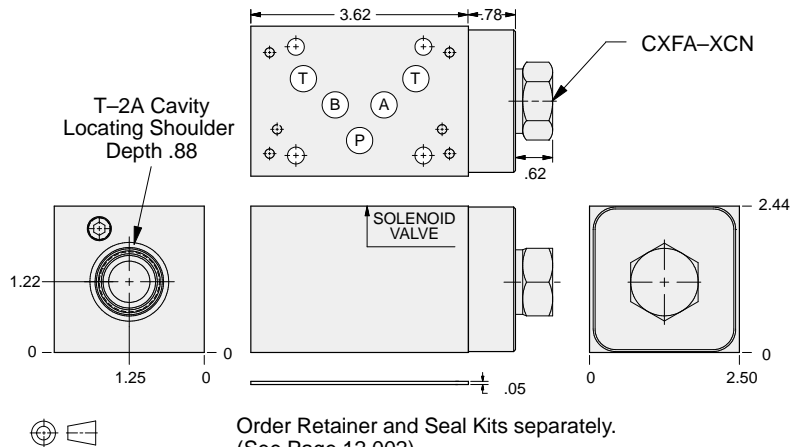
- Aluminum rated to 3000 psi and Ductile Iron rated to 5000 psi.
- See page viii for ordering cartridge/body and seals. Pressure ratings, material specifications on page xiv.



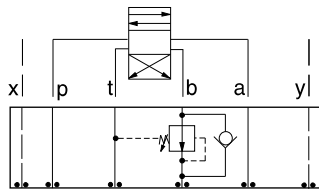
### FUNCTION

On A Drain to T  
Reverse FF Check

### Reducing Valves



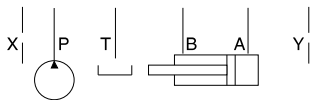
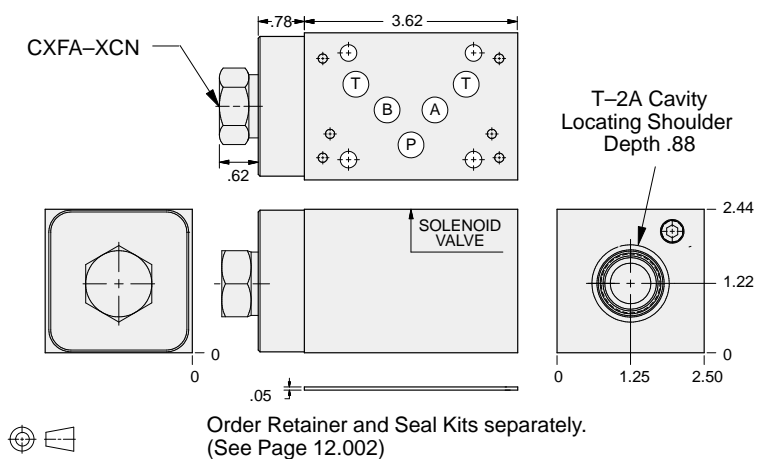
ALUMINUM		DUCTILE IRON	
Model Code	List Price	Model Code	List Price
<b>BJ2</b>		<b>BJ2/S</b>	



### FUNCTION

On B Drain to T  
Reverse FF Check

### Reducing Valves



ALUMINUM		DUCTILE IRON	
Model Code	List Price	Model Code	List Price
<b>BJ3</b>		<b>BJ3/S</b>	

05xy REDUCING

### TYPICAL CARTRIDGES USED WITH BODIES SHOWN ABOVE

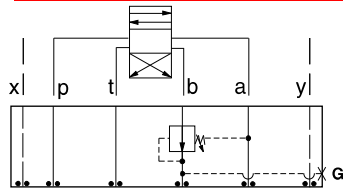
	Pilot Operated Reducing Valve		
	<b>PBFB Page 3.06</b>		
	Air Controlled, Pilot Operated Reducing/Relieving Valve		
	<b>PBFC Page 3.08</b>		
<b>OTHER VALVES:</b>			



# ISO 05 X,Y SANDWICH BODIES



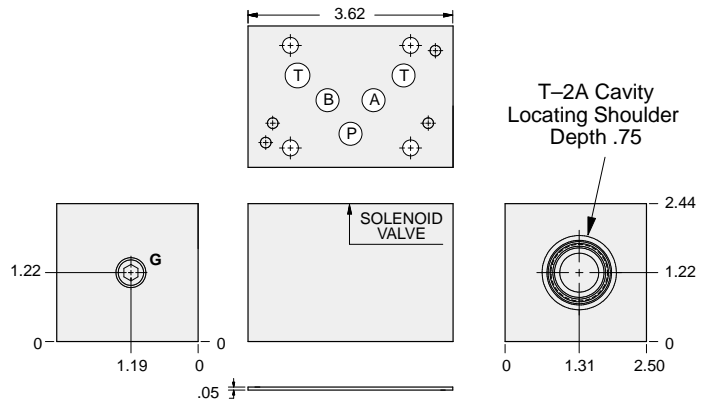
- Aluminum rated to 3000 psi and Ductile Iron rated to 5000 psi.
- See page viii for ordering cartridge/body and seals. Pressure ratings, material specifications on page xiv.



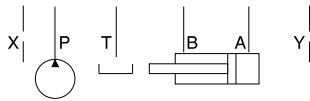
### FUNCTION

On B  
Drained to A

### Reducing Valves



Order Retainer and Seal Kits separately.  
(See Page 12.002)



Gage Port (Plugged)	ALUMINUM		DUCTILE IRON	
	Model Code	List Price	Model Code	List Price
.25 NPTF	<b>BJB</b>		<b>BJB/S</b>	
.25 BSPP	<b>BJB/M</b>		<b>BJB/T</b>	

05xy REDUCING

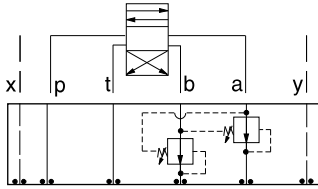
TYPICAL CARTRIDGES USED WITH BODIES SHOWN ABOVE			
	Pilot Operated Reducing Valve		
	PBFB Page 3.06		
<b>OTHER VALVES:</b>			



# ISO 05 X,Y SANDWICH BODIES



- Aluminum rated to 3000 psi and Ductile Iron rated to 5000 psi.
- See page viii for ordering cartridge/body and seals. Pressure ratings, material specifications on page xiv.

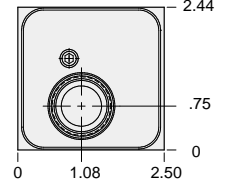
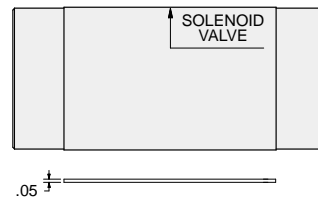
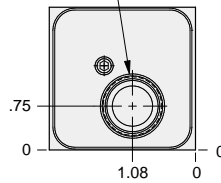
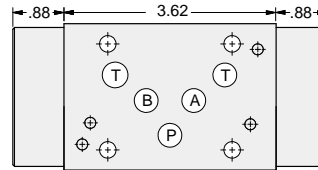


### FUNCTION

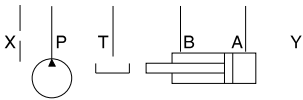
On **A** and **B**  
Drains to Opposite Port

### Reducing Valves

T-2A Cavity  
Locating Shoulder  
Depth .73  
2 places.



Order Retainer and Seal Kits separately.  
(See Page 12.002)



ALUMINUM		DUCTILE IRON	
Model Code	List Price	Model Code	List Price
<b>BJY</b>		<b>BJY/S</b>	

05<sub>xy</sub> REDUCING

TYPICAL CARTRIDGES USED WITH BODIES SHOWN ABOVE			
	<i>Pilot Operated Reducing Valve</i>		
	<b>PBFB Page 3.06</b>		
<b>OTHER VALVES:</b>			