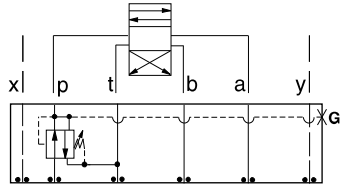




ISO 05 X,Y SANDWICH BODIES



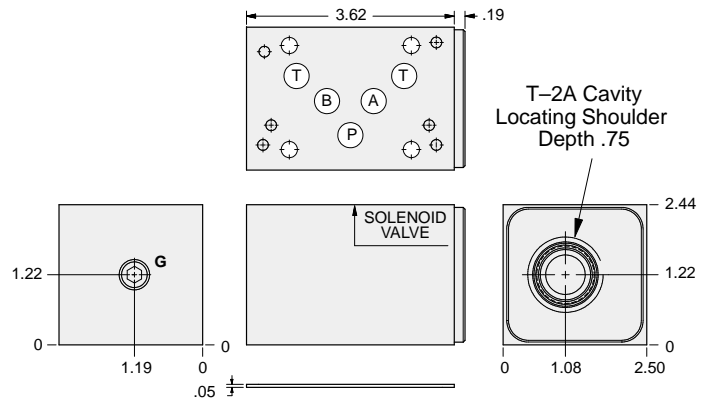
- Aluminum rated to 3000 psi and Ductile Iron rated to 5000 psi.
- See page viii for ordering cartridge/body and seals. Pressure ratings, material specifications on page xiv.



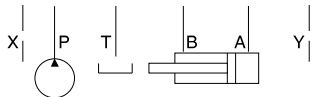
FUNCTION

On P Tank to T
Drained to T

Reducing/Relieving Valves



Order Retainer and Seal Kits separately.
(See Page 12.002)



Gage Port (Plugged)	ALUMINUM		DUCTILE IRON	
	Model Code	List Price	Model Code	List Price
.25 NPTF	BJP		BJP/S	
.25 BSPP	BJP/M		BJP/T	

05xy REDUCING/RELIEVING

TYPICAL CARTRIDGES USED WITH BODIES SHOWN ABOVE			
	Pilot Operated Reducing/Relieving Valve		
	PPFB Page 3.10		
	Air Controlled, Pilot Operated Reducing/Relieving Valve		
	PPFC Page 3.12		
OTHER VALVES:			

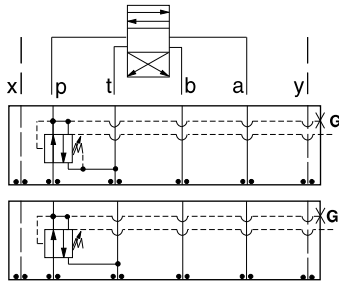


ISO 05 SANDWICH BODIES



- Aluminum rated to 3000 psi and Ductile Iron rated to 5000 psi.
- See page viii for ordering cartridge/body and seals. Pressure ratings, material specifications on page xiv.

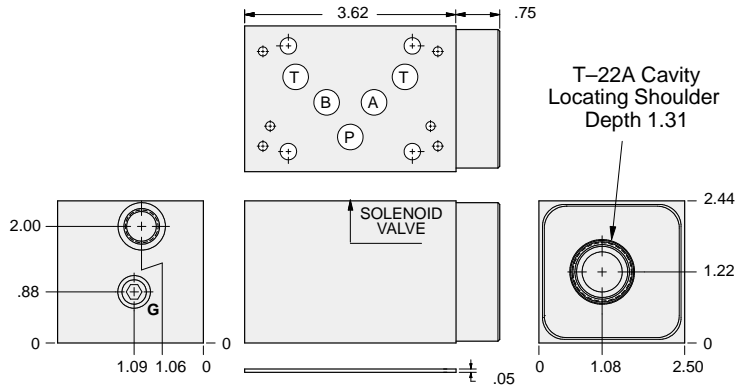
Reducing/Relieving Valves



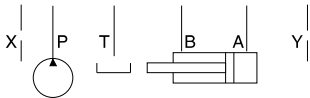
FUNCTION

On P Tank to T
Vented Externally

On P Tank to T
Drained Externally



Order Retainer and Seal Kits separately.
(See Page 12.002)



External Port	Gage Port (Plugged)	ALUMINUM		DUCTILE IRON	
		Model Code	List Price	Model Code	List Price
SAE-6	.25 NPTF	NJP		NJP/S	
.25 BSPP	.25 BSPP	NJP/M		NJP/T	

05xyREDUCING/RELIEVING

TYPICAL CARTRIDGES USED WITH BODIES SHOWN ABOVE

	Pilot Operated Reducing/Relieving Valve with Drain Port		
	PVFA Page 3.14		
	Pilot Operated Reducing/Relieving Valve with Vent Port		
	PVFB Page 3.16		
OTHER VALVES:			

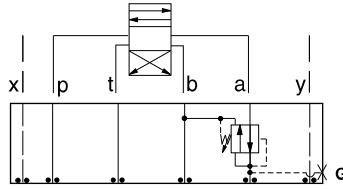


ISO 05 X,Y SANDWICH BODIES



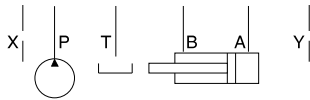
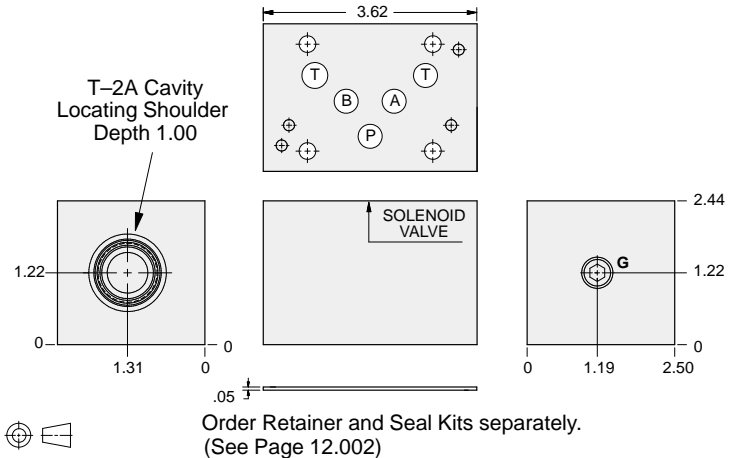
- Aluminum rated to 3000 psi and Ductile Iron rated to 5000 psi.
- See page viii for ordering cartridge/body and seals. Pressure ratings, material specifications on page xiv.

Reducing/Relieving Valves



FUNCTION

On A Tank to B
Drained to B



Gage Port (Plugged)	ALUMINUM		DUCTILE IRON	
	Model Code	List Price	Model Code	List Price
.25 NPTF	BJA		BJA/S	
.25 BSPP	BJA/M		BJA/T	

05xy REDUCING/RELIEVING

TYPICAL CARTRIDGES USED WITH BODIES SHOWN ABOVE			
	Pilot Operated Reducing/Relieving Valve		
	PPFB Page 3.10		
OTHER VALVES:			

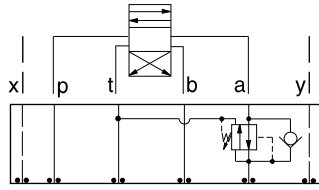


ISO 05 X,Y SANDWICH BODIES



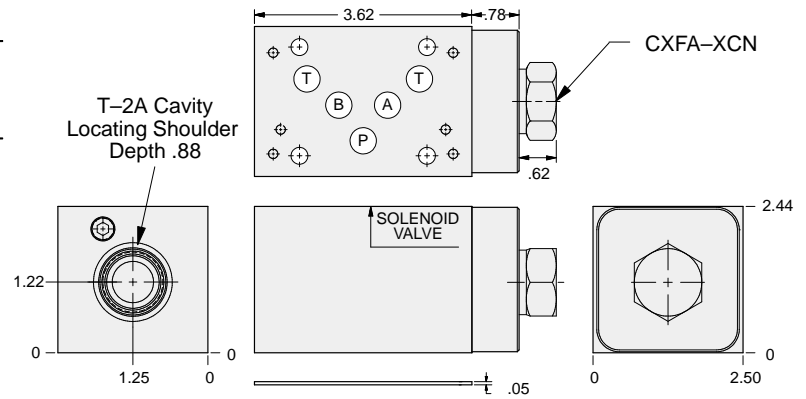
- Aluminum rated to 3000 psi and Ductile Iron rated to 5000 psi.
- See page viii for ordering cartridge/body and seals. Pressure ratings, material specifications on page xiv.

Reducing/Relieving Valves

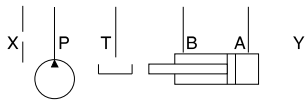


FUNCTION

On A Tank to T
Drained to T
Reverse FF Check

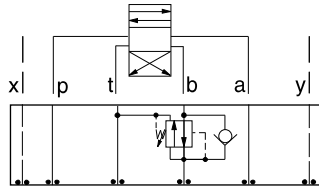


Order Retainer and Seal Kits separately.
(See Page 12.002)



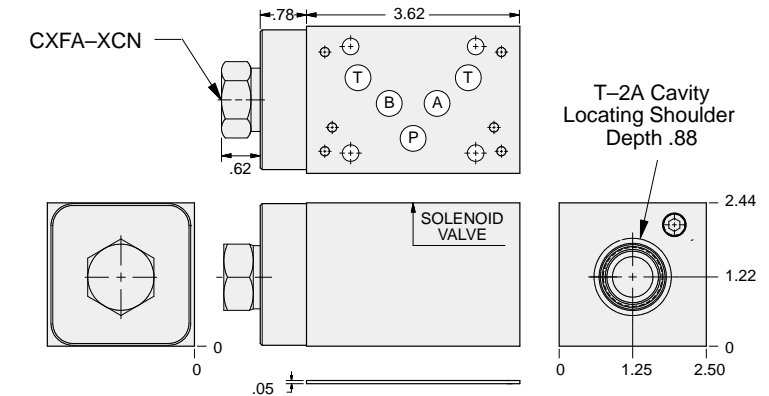
ALUMINUM		DUCTILE IRON	
Model Code	List Price	Model Code	List Price
BJ2		BJ2/S	

Reducing/Relieving Valves

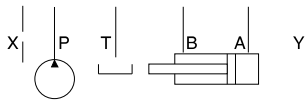


FUNCTION

On B Tank to T
Drained to T
Reverse FF Check



Order Retainer and Seal Kits separately.
(See Page 12.002)



ALUMINUM		DUCTILE IRON	
Model Code	List Price	Model Code	List Price
BJ3		BJ3/S	

TYPICAL CARTRIDGES USED WITH BODIES SHOWN ABOVE

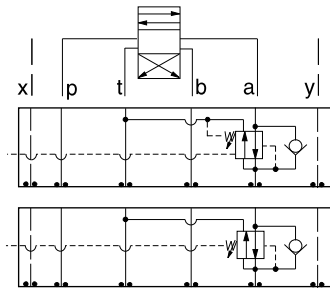
	Pilot Operated Reducing/Relieving Valve		
	PPFB Page 3.10		
	Air Controlled, Pilot Operated Reducing/Relieving Valve		
	PPFC Page 3.12		
OTHER VALVES:			



ISO 05 X,Y SANDWICH BODIES



- Aluminum rated to 3000 psi and Ductile Iron rated to 5000 psi.
- See page viii for ordering cartridge/body and seals. Pressure ratings, material specifications on page xiv.

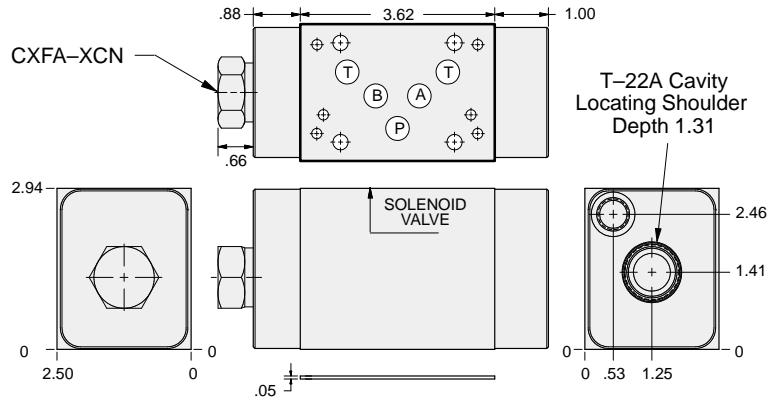


FUNCTION

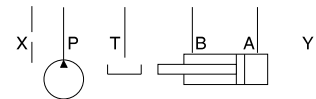
On A tank to T
Vented Externally
Reverse FF Check

On A tank to T
Drained Externally
Reverse FF Check

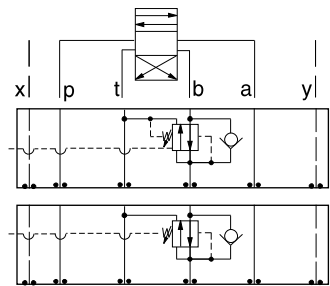
Reducing/Relieving Valves



Order Retainer and Seal Kits separately.
(See Page 12.002)



External Port	ALUMINUM		DUCTILE IRON	
	Model Code	List Price	Model Code	List Price
SAE-6	NJ2		NJ2/S	
.25 BSPP	NJ2/M		NJ2/T	

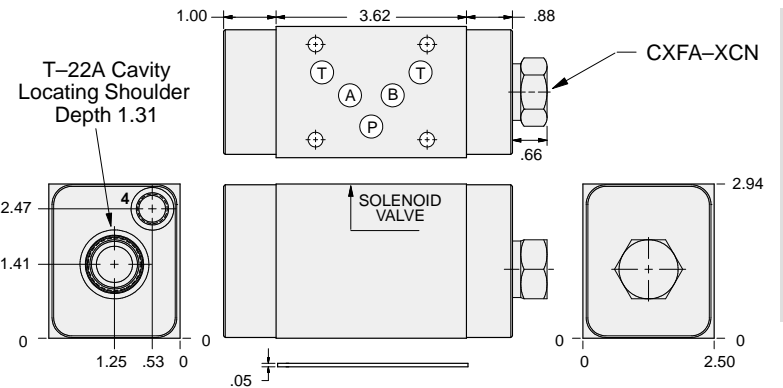


FUNCTION

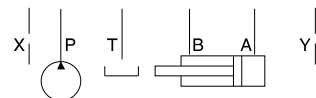
On B Tank to T
Vented Externally
Reverse FF Check

On B Tank to T
Drained Externally
Reverse FF Check

Reducing/Relieving Valves



Order Retainer and Seal Kits separately.
(See Page 12.002)



Mounting Holes	ALUMINUM		DUCTILE IRON	
	Model Code	List Price	Model Code	List Price
SAE-6	NJ3		NJ3/S	
.25 BSPP	NJ3/M		NJ3/T	

05xy REDUCING/RELIEVING

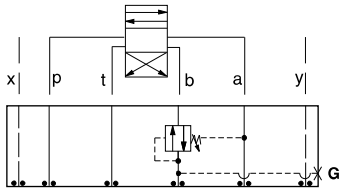
TYPICAL CARTRIDGES USED WITH BODIES SHOWN ABOVE			
	Pilot Operated Reducing/Relieving Valve with Drain Port		
	PVFA Page 3.14		
	Pilot Operated Reducing/Relieving Valve with Vent Port		
	PVFB Page 3.16		
OTHER VALVES:			



ISO 05 X,Y SANDWICH BODIES



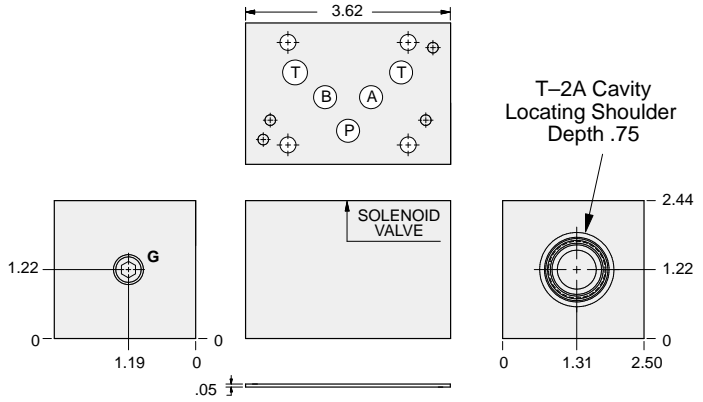
- Aluminum rated to 3000 psi and Ductile Iron rated to 5000 psi.
- See page viii for ordering cartridge/body and seals. Pressure ratings, material specifications on page xiv.



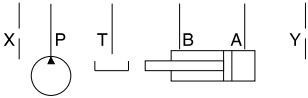
FUNCTION

On **B** Tank to **A**
Drained to **A**

Reducing/Relieving Valves



Order Retainer and Seal Kits separately.
(See Page 12.002)



Gage Port (Plugged)	ALUMINUM		DUCTILE IRON	
	Model Code	List Price	Model Code	List Price
.25 NPTF	BJB		BJB/S	
.25 BSPP	BJB/M		BJB/T	

05xyREDUCING/RELIEVING

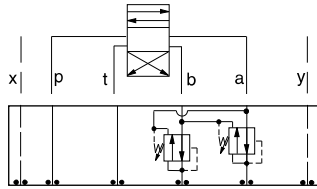
TYPICAL CARTRIDGES USED WITH BODIES SHOWN ABOVE			
	Pilot Operated Reducing/Relieving Valve		
	PPFB Page 3.10		
OTHER VALVES:			



ISO 05 X,Y SANDWICH BODIES



- Aluminum rated to 3000 psi and Ductile Iron rated to 5000 psi.
- See page viii for ordering cartridge/body and seals. Pressure ratings, material specifications on page xiv.

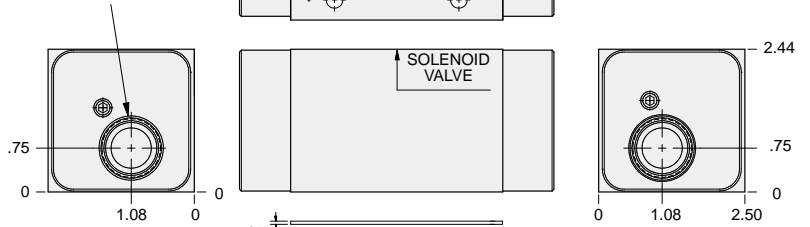


FUNCTION

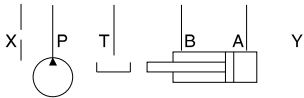
On **A** and **B**
Tanks and Drains to
Opposite Port

Reducing/Relieving Valves

T-2A Cavity
Locating Shoulder
Depth .73
2 places.



Order Retainer and Seal Kits separately.
(See Page 12.002)



ALUMINUM		DUCTILE IRON	
Model Code	List Price	Model Code	List Price
BJY		BJY/S	

05_{xy} REDUCING/RELIEVING

TYPICAL CARTRIDGES USED WITH BODIES SHOWN ABOVE

	Pilot Operated Reducing/Relieving Valve		
	PPFB Page 3.10		
OTHER VALVES:			