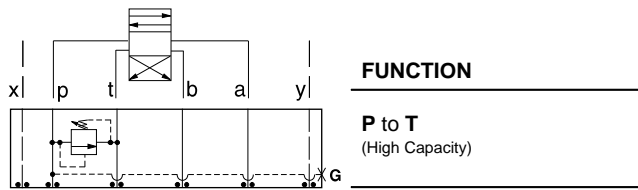




ISO 05 X,Y SANDWICH BODIES



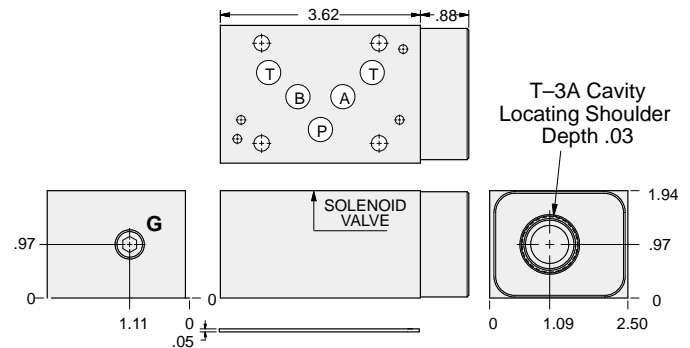
- Aluminum rated to 3000 psi and Ductile Iron rated to 5000 psi.
- See page viii for ordering cartridge/body and seals. Pressure ratings, material specifications on page xiv.



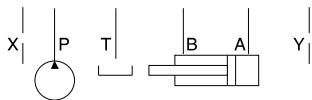
FUNCTION

P to T
(High Capacity)

Relief Valves



Order Retainer and Seal Kits separately.
(See Page 12.002)



Gage Port (Plugged)	ALUMINUM		DUCTILE IRON	
	Model Code	List Price	Model Code	List Price
.25 NPTF	CJP		CJP/S	
.25 BSPP	CJP/M		CJP/T	

TYPICAL CARTRIDGES USED WITH BODIES SHOWN ABOVE

	<i>Pilot Operated Relief Valve</i> RPGC Page 1.06		<i>Pilot Operated "Kick-Down" Relief Valve</i> RQGB Page 1.12
	<i>Pilot Operated, Rapid Response Relief Valve</i> RPGE Page 1.08		<i>Air Controlled, Pilot Operated Relief Valve</i> RPGD Page 1.14
	<i>Direct Acting Relief Valve</i> RDFA Page 1.10		
OTHER VALVES:			

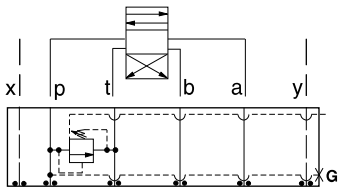
05xy RELIEF



ISO 05 X,Y SANDWICH BODIES



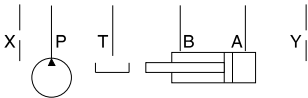
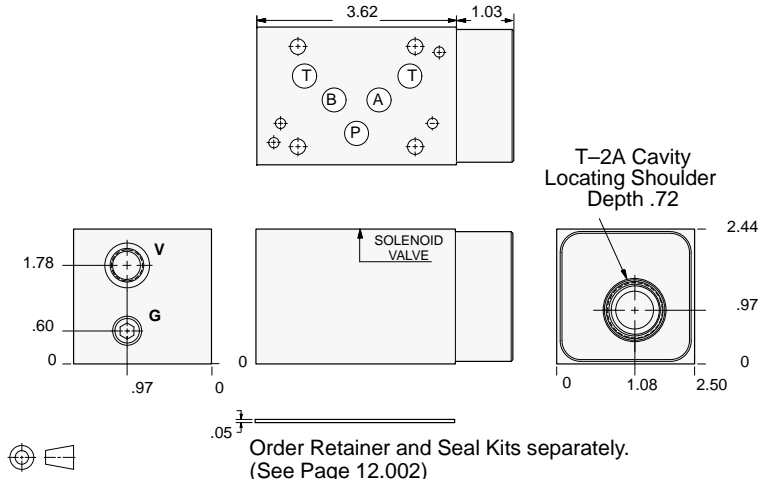
- Aluminum rated to 3000 psi and Ductile Iron rated to 5000 psi.
- See page viii for ordering cartridge/body and seals. Pressure ratings, material specifications on page xiv.



FUNCTION

P to T
Externally Vented

Relief Valves



Gage Port (Plugged)	Gage Port (Plugged)	ALUMINUM		DUCTILE IRON	
		Model Code	List Price	Model Code	List Price
.25 NPTF	SAE-6	BJC		BJC/S	
.25 BSPP	.25 BSPP	BJC/M		BJC/T	

05xy RELIEF

TYPICAL CARTRIDGES USED WITH BODIES SHOWN ABOVE

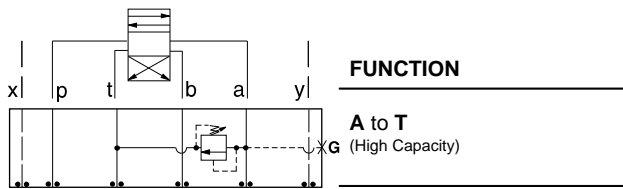
	<i>Pilot Operated Vented Relief Valve</i>		
	RVEA Page 1.18		
OTHER VALVES:			



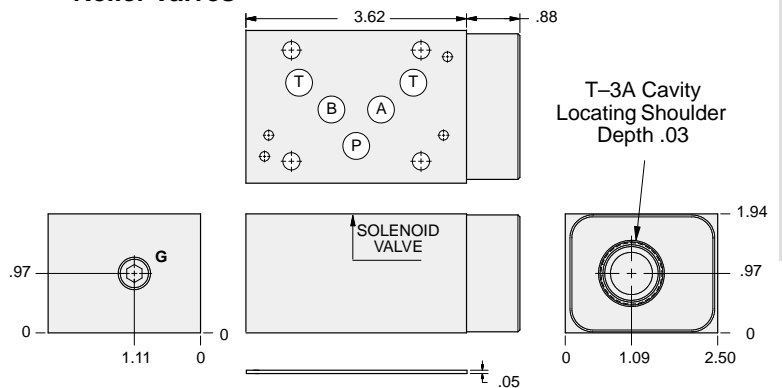
ISO 05 X,Y SANDWICH BODIES



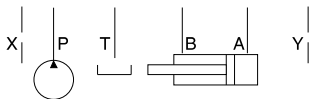
- Aluminum rated to 3000 psi and Ductile Iron rated to 5000 psi.
- See page viii for ordering cartridge/body and seals. Pressure ratings, material specifications on page xiv.



Relief Valves



Order Retainer and Seal Kits separately.
(See Page 12.002)



Gage Port (Plugged)	ALUMINUM		DUCTILE IRON	
	Model Code	List Price	Part Number	List Price
.25 NPTF	CJA		CJA/S	
.25 BSPP	CJA/M		CJA/T	

TYPICAL CARTRIDGES USED WITH BODIES SHOWN ABOVE			
	Pilot Operated Relief Valve RPGC Page 1.06		Pilot Operated "Kick-Down" Relief Valve RQGB Page 1.12
	Pilot Operated, Rapid Response Relief Valve RPGE Page 1.08		Air Controlled, Pilot Operated Relief Valve RPGD Page 1.14
	Direct Acting Relief Valve RDFA Page 1.10		
OTHER VALVES:			

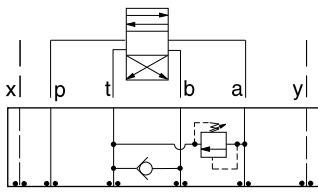
05xy RELIEF



ISO 05 X,Y SANDWICH BODIES



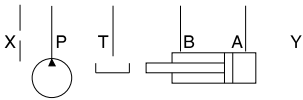
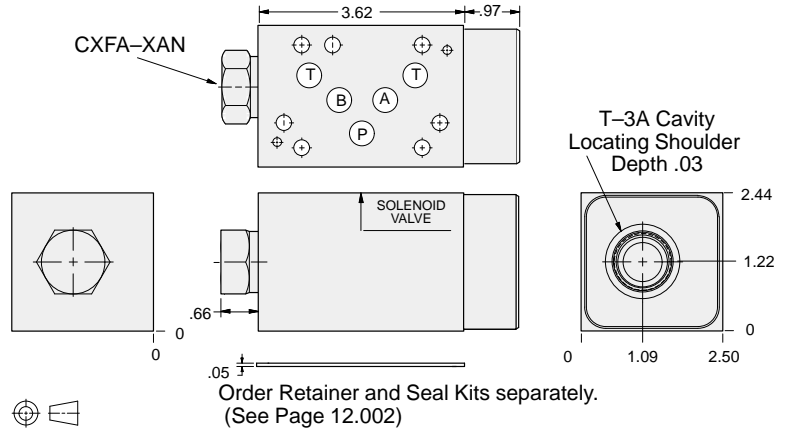
- Aluminum rated to 3000 psi and Ductile Iron rated to 5000 psi.
- See page viii for ordering cartridge/body and seals. Pressure ratings, material specifications on page xiv.



FUNCTION

A to T
FF Check T to B

Relief Valves



ALUMINUM		DUCTILE IRON	
Model Code	List Price	Model Code	List Price
CJ2		CJ2/S	

05xy RELIEF

TYPICAL CARTRIDGES USED WITH BODIES SHOWN ABOVE

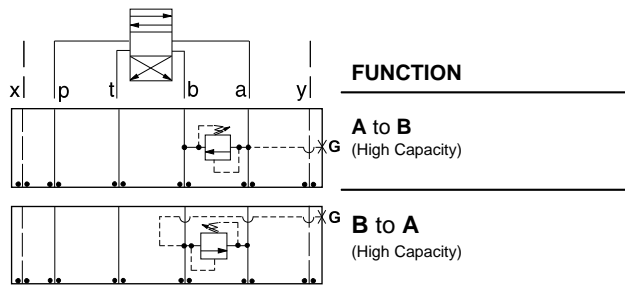
	<i>Pilot Operated Relief Valve</i>		<i>Pilot Operated "Kick-Down" Relief Valve</i>
	RPGC Page 1.06		RQGB Page 1.12
	<i>Pilot Operated, Rapid Response Relief Valve</i>		<i>Air Controlled, Pilot Operated Relief Valve</i>
	RPGE Page 1.08		RPGD Page 1.14
	<i>Direct Acting Relief Valve</i>		
	RDFA Page 1.10		
OTHER VALVES:			



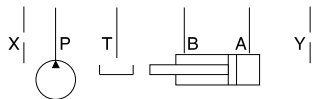
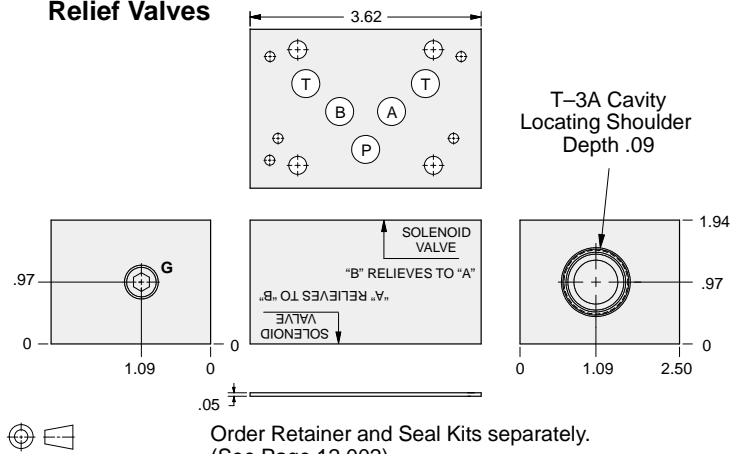
ISO 05 X,Y SANDWICH BODIES



- Aluminum rated to 3000 psi and Ductile Iron rated to 5000 psi.
- See page viii for ordering cartridge/body and seals. Pressure ratings, material specifications on page xiv.



Relief Valves



Gage Port (Plugged)	ALUMINUM		DUCTILE IRON	
	Model Code	List Price	Model Code	List Price
.25 NPTF	CJC		CJC/S	
.25 BSPP	CJC/M		CJC/T	

TYPICAL CARTRIDGES USED WITH BODIES SHOWN ABOVE

	Pilot Operated Relief Valve RPGC Page 1.06		Pilot Operated "Kick-Down" Relief Valve RQGB Page 1.12
	Pilot Operated, Rapid Response Relief Valve RPGE Page 1.08		Air Controlled, Pilot Operated Relief Valve RPGD Page 1.14
	Direct Acting Relief Valve RDFA Page 1.10		
OTHER VALVES:			

05xy RELIEF

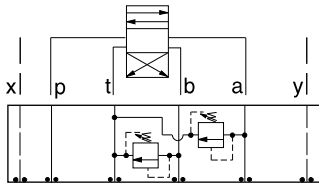


ISO 05 X,Y SANDWICH BODIES



- Aluminum rated to 3000 psi and Ductile Iron rated to 5000 psi.
- See page viii for ordering cartridge/body and seals. Pressure ratings, material specifications on page xiv.

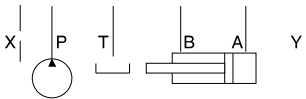
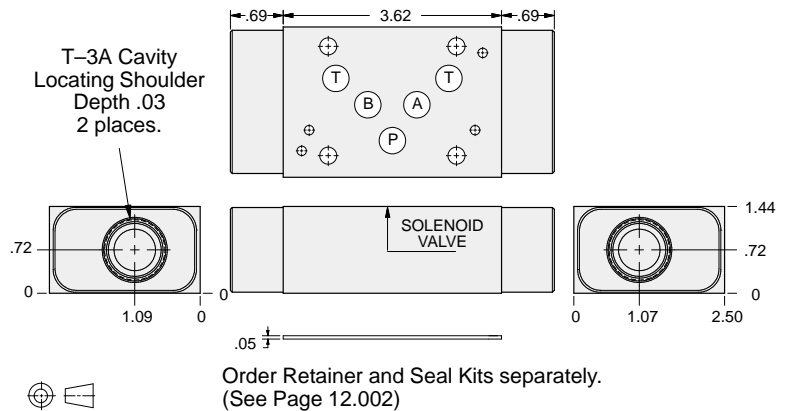
05xy RELIEF



FUNCTION

A and B to T
(High Capacity)

Relief Valves



ALUMINUM		DUCTILE IRON	
Model Code	List Price	Model Code	List Price
CJX		CJX/S	

TYPICAL CARTRIDGES USED WITH BODIES SHOWN ABOVE

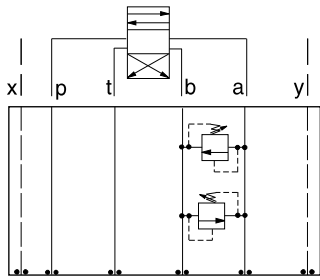
	<i>Pilot Operated Relief Valve</i> RPGC Page 1.06		<i>Pilot Operated "Kick-Down" Relief Valve</i> RQGB Page 1.12
	<i>Pilot Operated, Rapid Response Relief Valve</i> RPGE Page 1.08		<i>Air Controlled, Pilot Operated Relief Valve</i> RPGD Page 1.14
	<i>Direct Acting Relief Valve</i> RDFA Page 1.10		
OTHER VALVES:			



ISO 05 X,Y SANDWICH BODIES



- Aluminum rated to 3000 psi and Ductile Iron rated to 5000 psi.
- See page viii for ordering cartridge/body and seals. Pressure ratings, material specifications on page xiv.

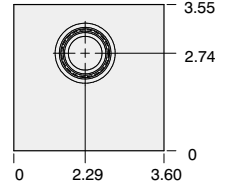
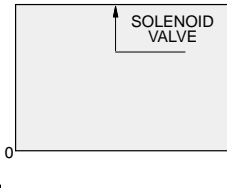
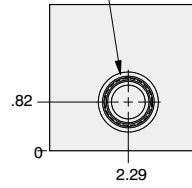
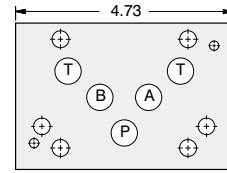


FUNCTION

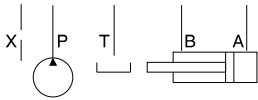
A to B and B to A
(Cross-Port)

Relief Valves

T-10A Cavity
Locating Shoulder
Depth .38
2 places.



Order Retainer and Seal Kits separately.
(See Page 12.002)



ALUMINUM		DUCTILE IRON	
Model Code	List Price	Model Code	List Price
CJY		CJY/S	

05xy RELIEF

TYPICAL CARTRIDGES USED WITH BODIES SHOWN ABOVE			
	<i>Pilot Operated Relief Valve</i>		<i>Pilot Operated "Kick-Down" Relief Valve</i>
	RPEC Page 1.06		RQEB Page 1.12
	<i>Pilot Operated, Rapid Response Relief Valve</i>		
	RPEE Page 1.08		
	<i>Direct Acting Relief Valve</i>		
	RDDA Page 1.10		
OTHER VALVES:			

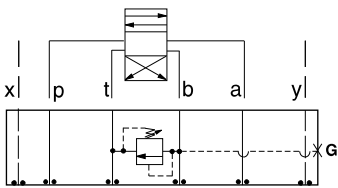


ISO 05 X,Y SANDWICH BODIES



- Aluminum rated to 3000 psi and Ductile Iron rated to 5000 psi.
- See page viii for ordering cartridge/body and seals. Pressure ratings, material specifications on page xiv.

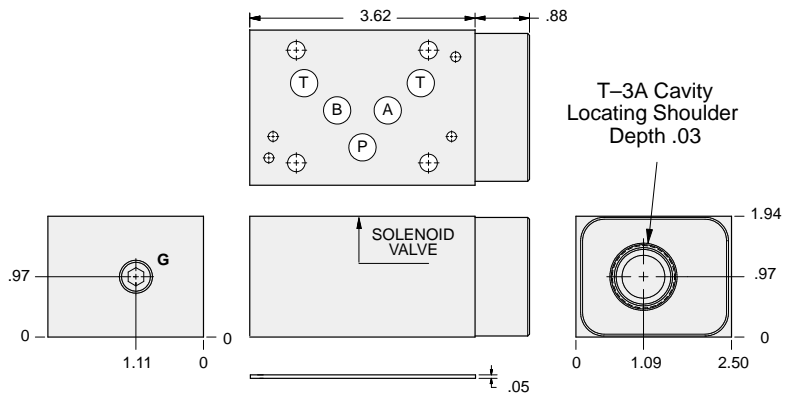
05xy RELIEF



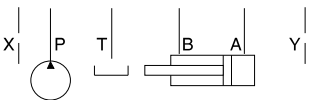
FUNCTION

B to T
(High Capacity)

Relief Valves



Order Retainer and Seal Kits separately.
(See Page 12.002)



Gage Port (Plugged)	ALUMINUM		DUCTILE IRON	
	Model Code	List Price	Model Code	List Price
.25 NPTF	CJB		CJB/S	
.25 BSPP	CJB/M		CJB/T	

TYPICAL CARTRIDGES USED WITH BODIES SHOWN ABOVE

	<i>Pilot Operated Relief Valve</i> RPGC Page 1.06		<i>Pilot Operated "Kick-Down" Relief Valve</i> RQGB Page 1.12
	<i>Pilot Operated, Rapid Response Relief Valve</i> RPGE Page 1.08		<i>Air Controlled, Pilot Operated Relief Valve</i> RPGD Page 1.14
	<i>Direct Acting Relief Valve</i> RDFA Page 1.10		
OTHER VALVES:			

