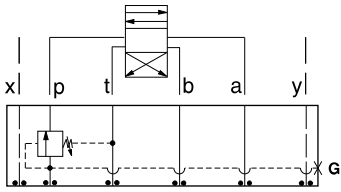




ISO 05 X,Y SANDWICH BODIES



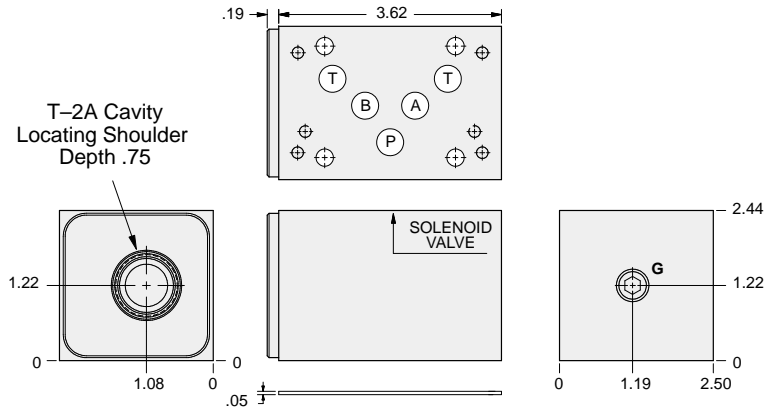
- Aluminum rated to 3000 psi and Ductile Iron rated to 5000 psi.
- See page viii for ordering cartridge/body and seals. Pressure ratings, material specifications on page xiv.



FUNCTION

In to P

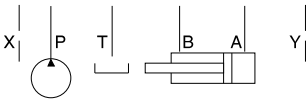
Sequence Valves



T-2A Cavity
Locating Shoulder
Depth .75

SOLENOID VALVE

Order Retainer and Seal Kits separately.
(See Page 12.002)



Gage Port (Plugged)	ALUMINUM		DUCTILE IRON	
	Model Code	List Price	Model Code	List Price
.25 NPTF	BJW		BJW/S	
.25 BSPP	BJW/M		BJW/T	

05_{xy} SEQUENCE

TYPICAL CARTRIDGES USED WITH BODIES SHOWN ABOVE			
	<i>Pilot Operated Sequence Valve</i>		<i>Direct Acting Sequence Valve with Reverse Free Flow Check</i>
	RSFC Page 2.06		SCEA Page 2.12
	<i>Pilot Operated "Kick-Down" Sequence Valve</i>		
	SQFB Page 2.08		
	<i>Air Controlled, Pilot Operated Sequence Valve</i>		
	RSFE Page 2.10		
OTHER VALVES:			

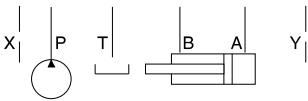
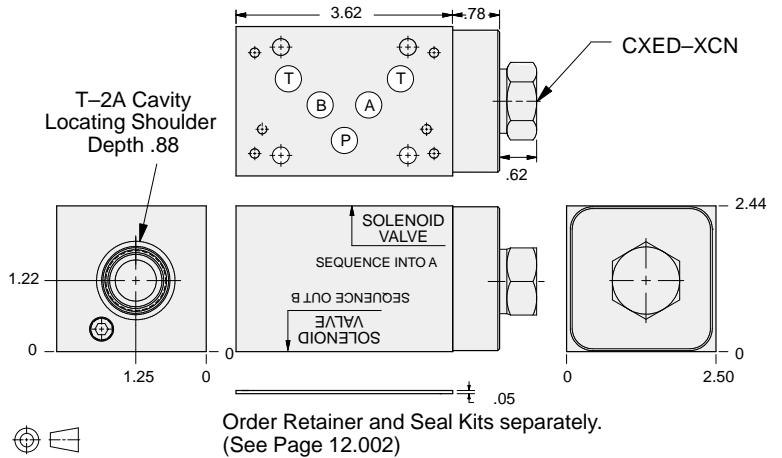
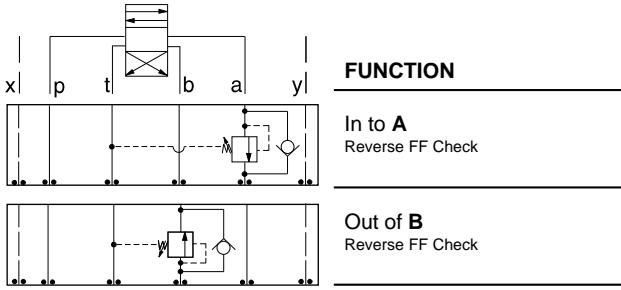


ISO 05 X,Y SANDWICH BODIES



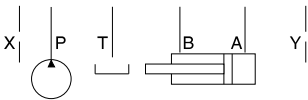
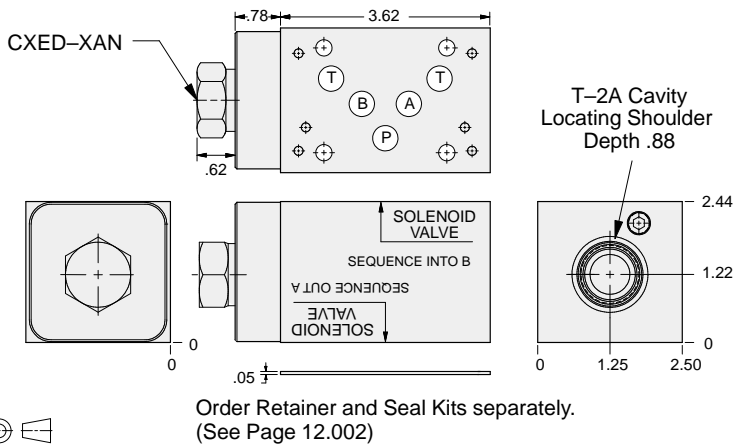
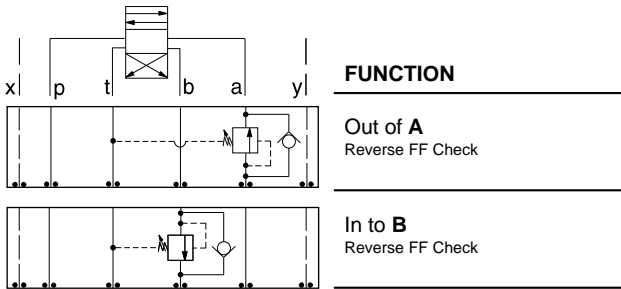
- Aluminum rated to 3000 psi and Ductile Iron rated to 5000 psi.
- See page viii for ordering cartridge/body and seals. Pressure ratings, material specifications on page xiv.

Sequence Valves



ALUMINUM		DUCTILE IRON	
Model Code	List Price	Model Code	List Price
BJ4		BJ4/S	

Sequence Valves



ALUMINUM		DUCTILE IRON	
Model Code	List Price	Model Code	List Price
BJ5		BJ5/S	

05xy SEQUENCE

TYPICAL CARTRIDGES USED WITH BODIES SHOWN ABOVE

	Pilot Operated Sequence Valve		
	RSFC Page 2.06		
	Pilot Operated "Kick-Down" Sequence Valve		
	SQFB Page 2.08		
	Air Controlled, Pilot Operated Sequence Valve		
	RSFE Page 2.10		
OTHER VALVES:			