

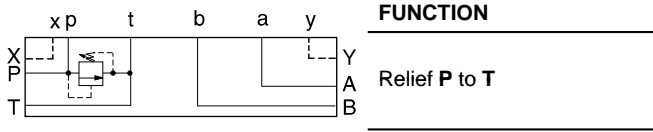


ISO 05 X,Y SANDWICH BODIES

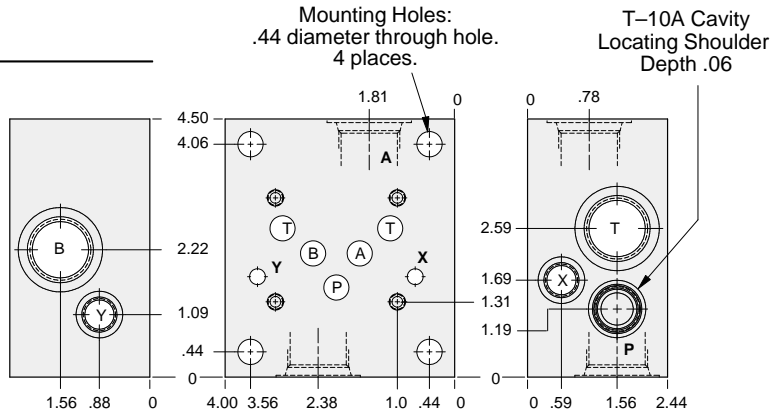


- Aluminum rated to 3000 psi and Ductile Iron rated to 5000 psi.
- See page viii for ordering cartridge/body and seals. Pressure ratings, material specifications on page xiv.

Side Ported Subplates

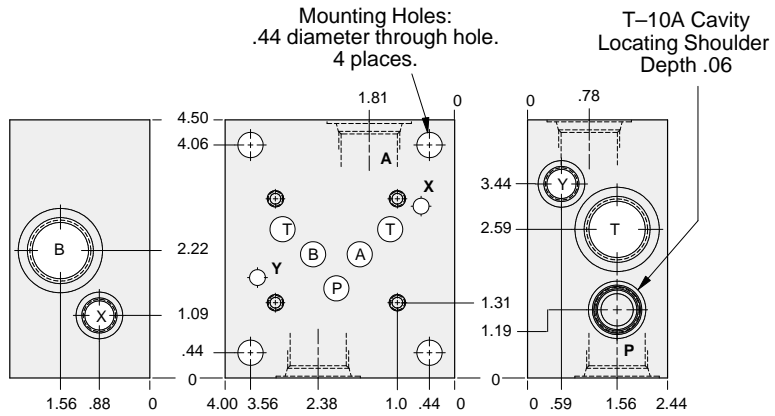


4 Interface Bolt Holes
x .50 deep
Inch: .250-20 UNC
Metric: M6 x 1.0



CETOP VERSION

4 Interface Bolt Holes
x .50 deep
Inch: .250-20 UNC
Metric: M6 x 1.0



U.S. VERSION

05xy SUBPLATE

Bolt Hole Interface	Port A,B,P,T	Port X,Y	ALUMINUM			DUCTILE IRON		
			Model Code U.S.	Model Code CETOP	List Price	Model Code U.S.	Model Code CETOP	List Price
Inch	.50 NPTF	.25 NPTF	ZHH	ZHP		ZHH/S	ZHP/S	
Inch	.75 NPTF	.25 NPTF	ZHJ	ZHQ		ZHJ/S	ZHQ/S	
Inch	SAE-10	SAE-6	ZHK	ZHR		ZHK/S	ZHR/S	
Inch	SAE-12	SAE-6	ZHL	ZHS		ZHL/S	ZHS/S	
Metric	.50 BSPP	.25 BSPP	ZHM	ZHT		ZHM/S	ZHT/S	
Metric	.75 BSPP	.25 BSPP	ZHN	ZHV		ZHN/S	ZHV/S	

TYPICAL CARTRIDGES USED WITH BODIES SHOWN ABOVE

	Pilot Operated Relief Valve		Direct Acting Relief Valve
	RPEC Page 1.06		RDDA Page 1.10
	Pilot Operated, Rapid Response Relief Valve		Pilot Operated "Kick-Down" Relief Valve
	RPEE Page 1.08		RQEB Page 1.12