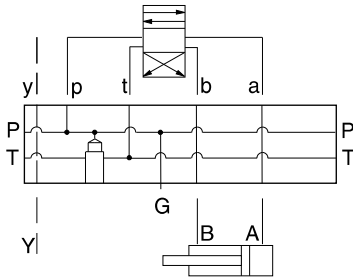




BAR MANIFOLDS



- Aluminum rated to 3000 psi and Ductile Iron rated to 5000 psi.
- See page viii for ordering cartridge/body and seals. Pressure ratings, material specifications on page xiv.

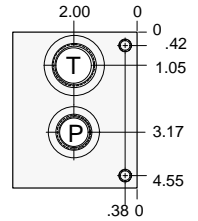
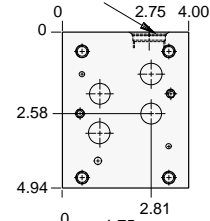
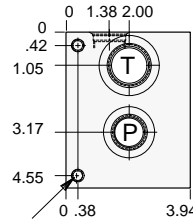


ISO 07 Parallel Circuit with Relief Cavity and Y Port

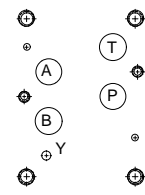
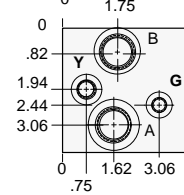
FUNCTION

One Station

T-3A Cavity
Locating Shoulder
Depth .09



Mounting Holes:
Inch: .375 - 16UNC
x .75 in. Deep.
Metric: M10 x 1.5 - 6H
x .75 in. Deep.
2 places each end



Mounting Holes	Port T	Ports A, B, P	Port Y	Gage Port	ALUMINUM		DUCTILE IRON	
					Model Code	List Price	Model Code	List Price
inch	1.00 NPTF	.75 NPTF	.25 NPTF	.25 NPTF	VLA		VLA/S	
inch	SAE-16	SAE-12	SAE-6	SAE-4	VLE		VLE/S	
metric	1.00 BSPP	.75 BSPP	.25 BSPP	.25 BSPP	VLJ		VLJ/S	

Bar Manifold Mounting Kits to be ordered separately. See page 12.087.

TYPICAL CARTRIDGES USED WITH BODIES SHOWN ABOVE

	Pilot Operated Relief Valve		Direct Acting Relief Valve
	RPGC Page 1.06		RDFA Page 1.10
OTHER VALVES:			

BAR MANIFOLDS

