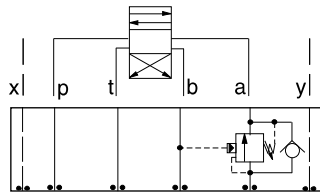




# ISO 07 SANDWICH BODIES



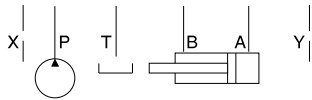
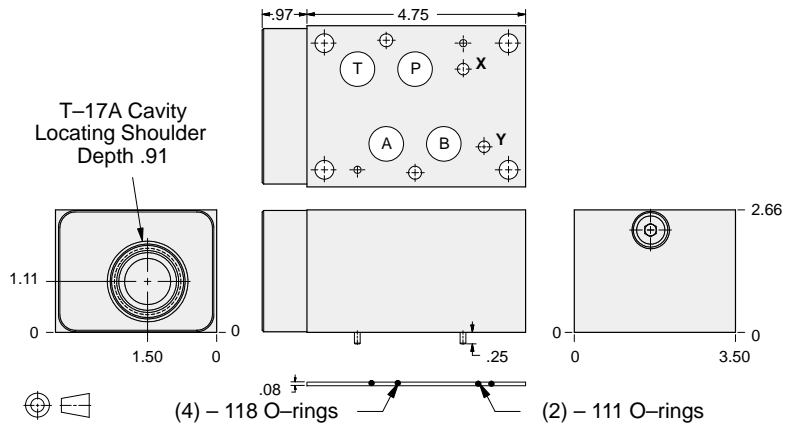
- Aluminum rated to 3000 psi and Ductile Iron rated to 5000 psi.
- See page viii for ordering cartridge/body and seals. Pressure ratings, material specifications on page xiv.



### FUNCTION

On A Pilot from B

### Counterbalance Valves



ALUMINUM		DUCTILE IRON	
Model Code	List Price	Model Code	List Price
<b>BJA</b>		<b>BJA/S</b>	

07 COUNTERBALANCE

TYPICAL CARTRIDGES USED WITH BODIES SHOWN ABOVE			
	Counterbalance Valve, 3:1 Pilot Ratio		
	<b>CBGA</b> Page 4.11		
	Counterbalance Valve, 4.5:1 Pilot Ratio		
	<b>CBGG</b> Page 4.13		
	Counterbalance Valve, 10:1 Pilot Ratio		
	<b>CBGHP</b> Page 4.15		
<b>OTHER VALVES:</b>			

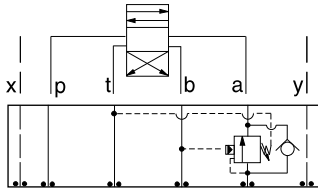


# ISO 07 SANDWICH BODIES



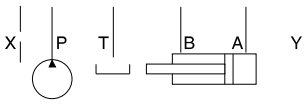
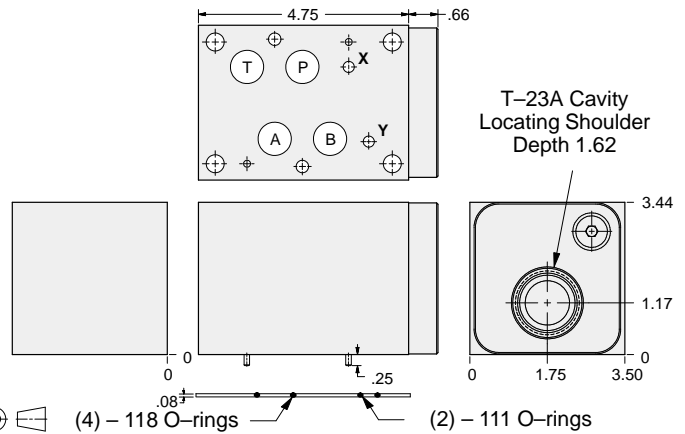
- Aluminum rated to 3000 psi and Ductile Iron rated to 5000 psi.
- See page viii for ordering cartridge/body and seals. Pressure ratings, material specifications on page xiv.

## Counterbalance Valves



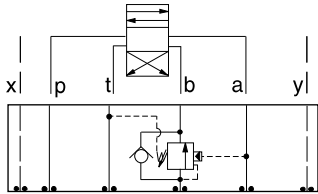
### FUNCTION

On A Pilot  
from B  
Vent to T



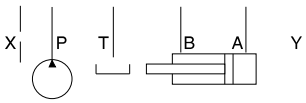
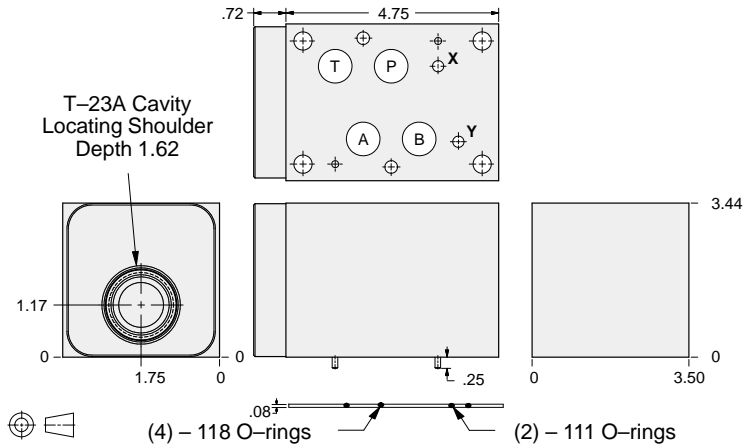
ALUMINUM		DUCTILE IRON	
Model Code	List Price	Model Code	List Price
NKA		NKA/S	

## Counterbalance Valves



### FUNCTION

On B Pilot from A  
Vent to T



ALUMINUM		DUCTILE IRON	
Model Code	List Price	Model Code	List Price
NKB		NKB/S	

07 COUNTERBALANCE

### TYPICAL CARTRIDGES USED WITH BODIES SHOWN ABOVE

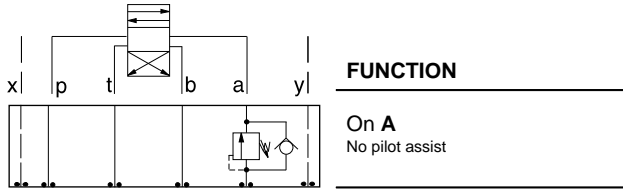
	Vented Counterbalance Valve, 3:1 Pilot Ratio		
	CWGA Page 4.19		
	Vented Counterbalance Valve, 5:1 Pilot Ratio		
	CWGG Page 4.21		
OTHER VALVES:			



# ISO 07 SANDWICH BODIES



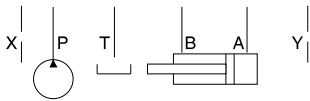
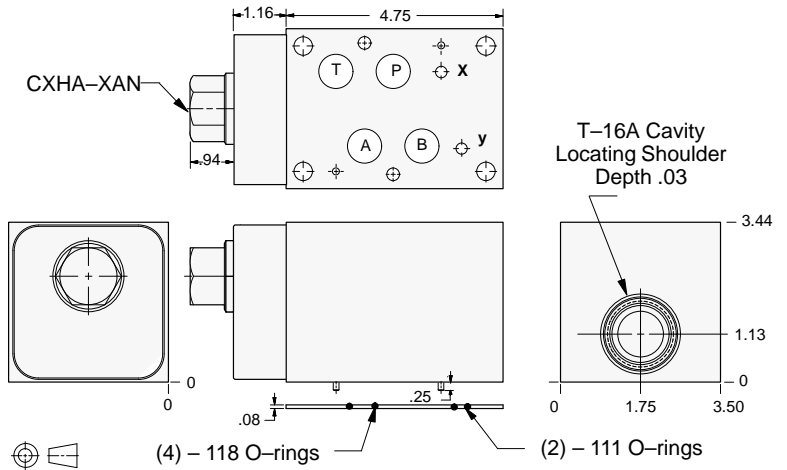
- Aluminum rated to 3000 psi and Ductile Iron rated to 5000 psi.
- See page viii for ordering cartridge/body and seals. Pressure ratings, material specifications on page xiv.



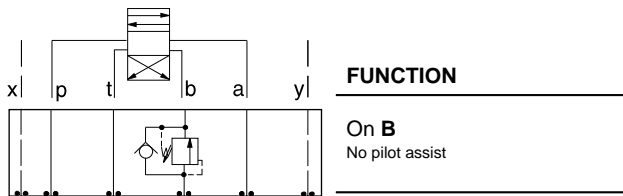
### FUNCTION

**On A**  
No pilot assist

### Counterbalance Valves



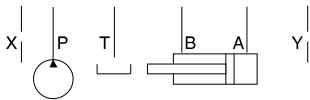
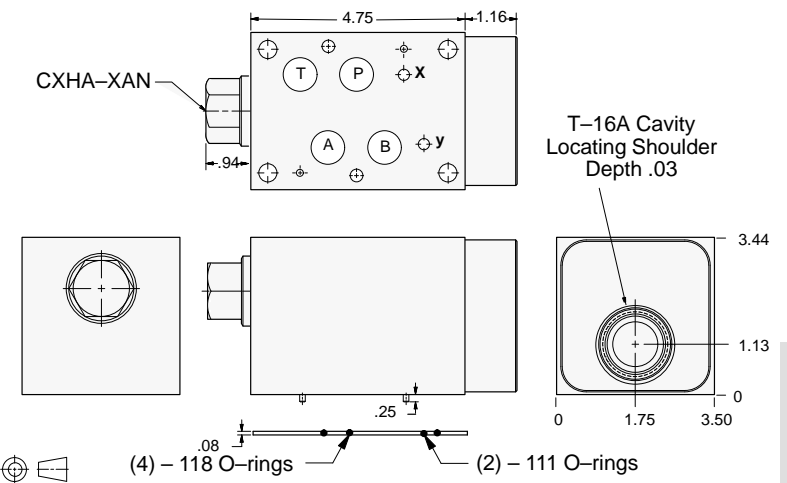
ALUMINUM		DUCTILE IRON	
Model Code	List Price	Model Code	List Price
<b>CK4</b>		<b>CK4/S</b>	



### FUNCTION

**On B**  
No pilot assist

### Counterbalance Valves



ALUMINUM		DUCTILE IRON	
Model Code	List Price	Part Number	List Price
<b>CK5</b>		<b>CK5/S</b>	

### TYPICAL CARTRIDGES USED WITH BODIES SHOWN ABOVE

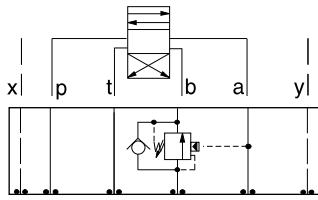
	Direct Acting Relief Valve		
	RDHA Page 1.11		
<b>OTHER VALVES:</b>			



# ISO 07 SANDWICH BODIES



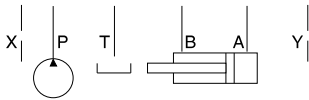
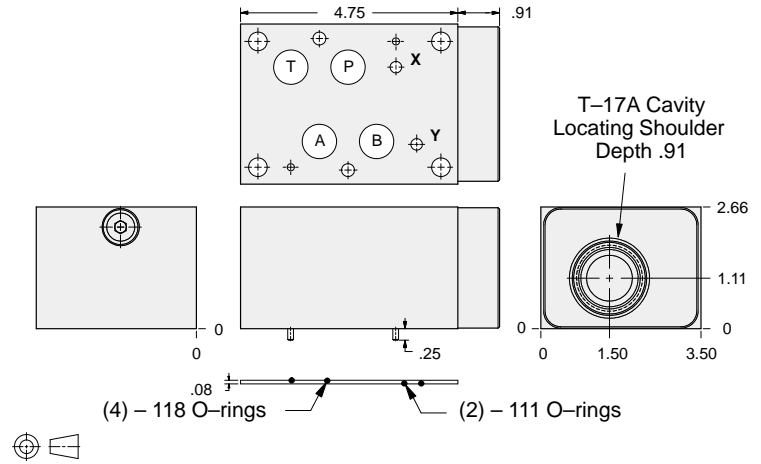
- Aluminum rated to 3000 psi and Ductile Iron rated to 5000 psi.
- See page viii for ordering cartridge/body and seals. Pressure ratings, material specifications on page xiv.



### FUNCTION

On B  
Pilot from A

### Counterbalance Valves



ALUMINUM		DUCTILE IRON	
Model Code	List Price	Model Code	List Price
<b>BKB</b>		<b>BKB/S</b>	

07 COUNTERBALANCE

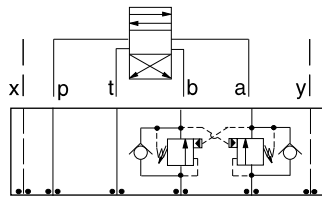
TYPICAL CARTRIDGES USED WITH BODIES SHOWN ABOVE			
	Counterbalance Valve, 3:1 Pilot Ratio		
	<b>CBG</b> Page 4.11		
	Counterbalance Valve, 4.5:1 Pilot Ratio		
	<b>CBGG</b> Page 4.13		
	Counterbalance Valve, 10:1 Pilot Ratio		
	<b>CBGH</b> Page 4.15		
<b>OTHER VALVES:</b>			



# ISO 07 SANDWICH BODIES



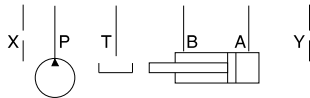
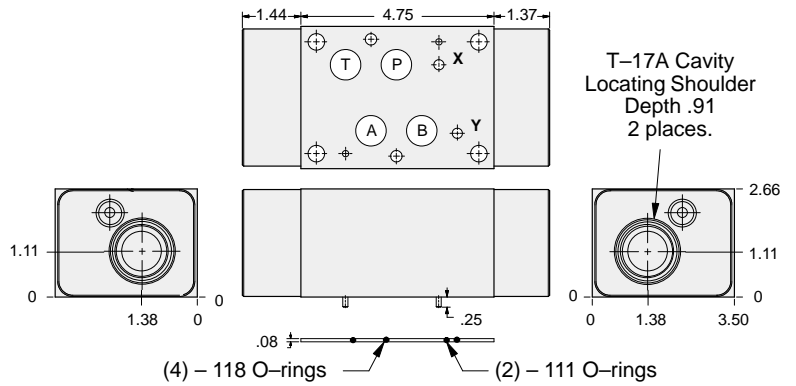
- Aluminum rated to 3000 psi and Ductile Iron rated to 5000 psi.
- See page viii for ordering cartridge/body and seals. Pressure ratings, material specifications on page xiv.



### FUNCTION

On A and B  
Cross-Piloted

### Counterbalance Valves



ALUMINUM		DUCTILE IRON	
Model Code	List Price	Model Code	List Price
<b>BKY</b>		<b>BKY/S</b>	

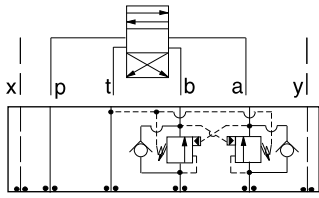
TYPICAL CARTRIDGES USED WITH BODIES SHOWN ABOVE			
	Counterbalance Valve, 3:1 Pilot Ratio		
	<b>CBGAP</b> Page 4.11		
	Counterbalance Valve, 4.5:1 Pilot Ratio		
	<b>CBGG</b> Page 4.13		
	Counterbalance Valve, 10:1 Pilot Ratio		
	<b>CBGHP</b> Page 4.15		
<b>OTHER VALVES:</b>			



# ISO 07 SANDWICH BODIES



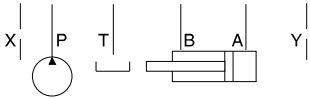
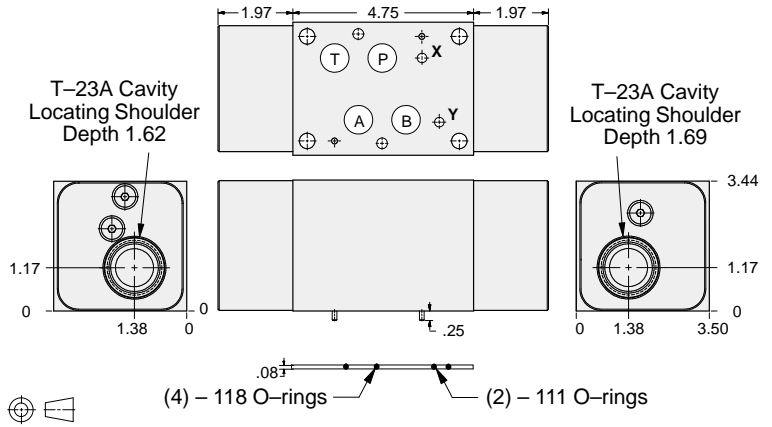
- Aluminum rated to 3000 psi and Ductile Iron rated to 5000 psi.
- See page viii for ordering cartridge/body and seals. Pressure ratings, material specifications on page xiv.



### FUNCTION

On **A** and **B**  
Cross-Piloted  
Vents to **T**

### Counterbalance Valves



ALUMINUM		DUCTILE IRON	
<i>Model Code</i>	<i>List Price</i>	<i>Model Code</i>	<i>List Price</i>
<b>NKY</b>		<b>NKY/S</b>	

07 COUNTERBALANCE

TYPICAL CARTRIDGES USED WITH BODIES SHOWN ABOVE			
	Vented Counterbalance Valve, 3:1 Pilot Ratio		
	<b>CWGA Page 4.19</b>		
	Vented Counterbalance Valve, 5:1 Pilot Ratio		
	<b>CWGG Page 4.21</b>		
<b>OTHER VALVES:</b>			