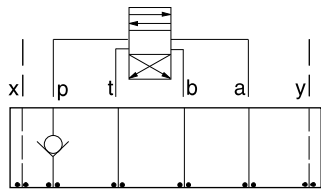




ISO 07 SANDWICH BODIES

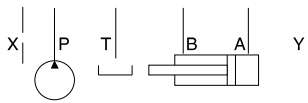
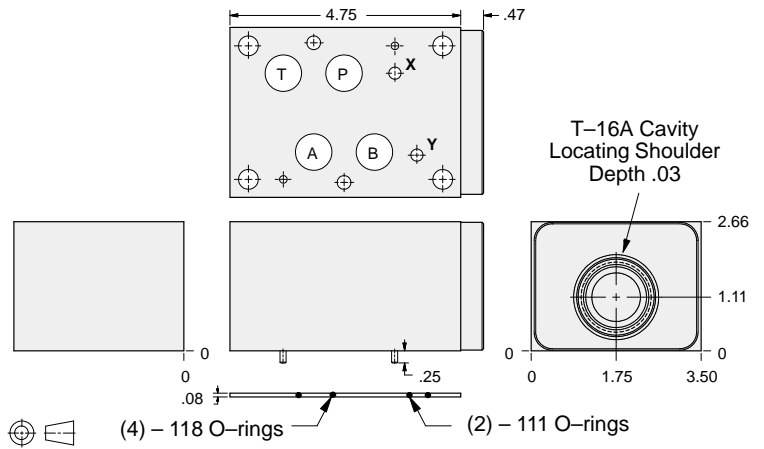


- Aluminum rated to 3000 psi and Ductile Iron rated to 5000 psi.
- See page viii for ordering cartridge/body and seals. Pressure ratings, material specifications on page xiv.



FUNCTION
On P

Check Valves



ALUMINUM		DUCTILE IRON	
Model Code	List Price	Model Code	List Price
DKP		DKP/S	

07 CHECK

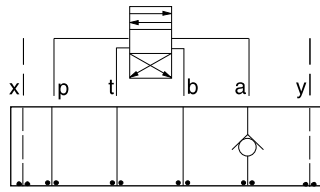
TYPICAL CARTRIDGES USED WITH BODIES SHOWN ABOVE			
	Check Valve, Free Flow Port 1 to Port 2 (Nose-to-Side)		
	CXHA Page 5.09		
OTHER VALVES:			



ISO 07 SANDWICH BODIES



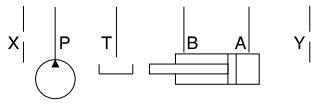
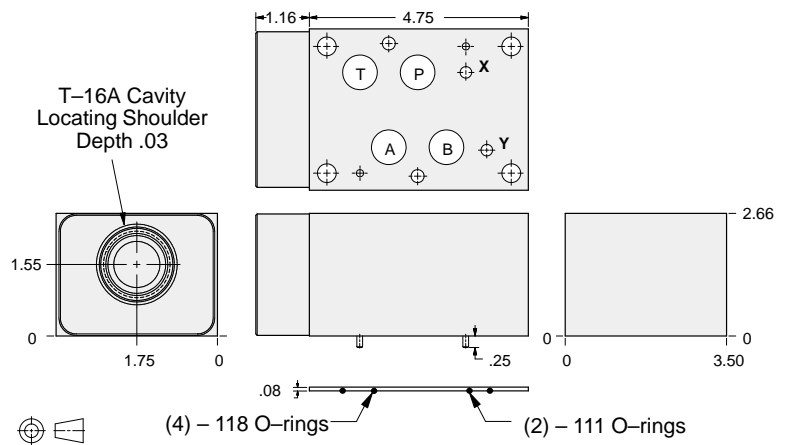
- Aluminum rated to 3000 psi and Ductile Iron rated to 5000 psi.
- See page viii for ordering cartridge/body and seals. Pressure ratings, material specifications on page xiv.



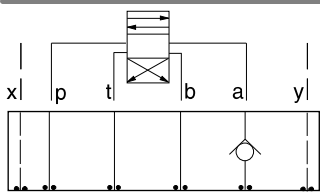
FUNCTION

On A
Free Flow Out
of Valve

Check Valves



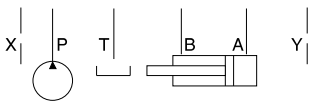
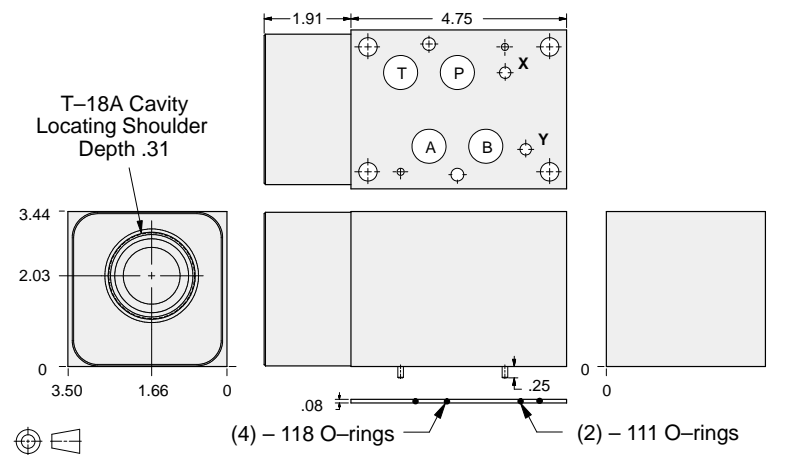
ALUMINUM		DUCTILE IRON	
Model Code	List Price	Model Code	List Price
DKC		DKC/S	



FUNCTION

On A
Free Flow Out
of Valve (High Capacity)

Check Valves



ALUMINUM		DUCTILE IRON	
Model Code	List Price	Model Code	List Price
DKG		DKG/S	

07 CHECK

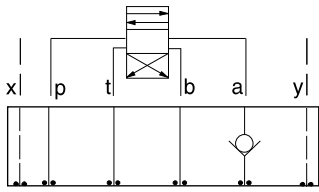
TYPICAL CARTRIDGES USED WITH BODIES SHOWN ABOVE			
	Check Valve, Free Flow Port 1 to Port 2 (Nose-to-Side)		
	CX*A Page 5.09		
OTHER VALVES:			



ISO 07 SANDWICH BODIES



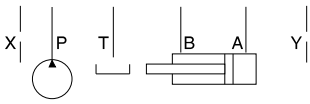
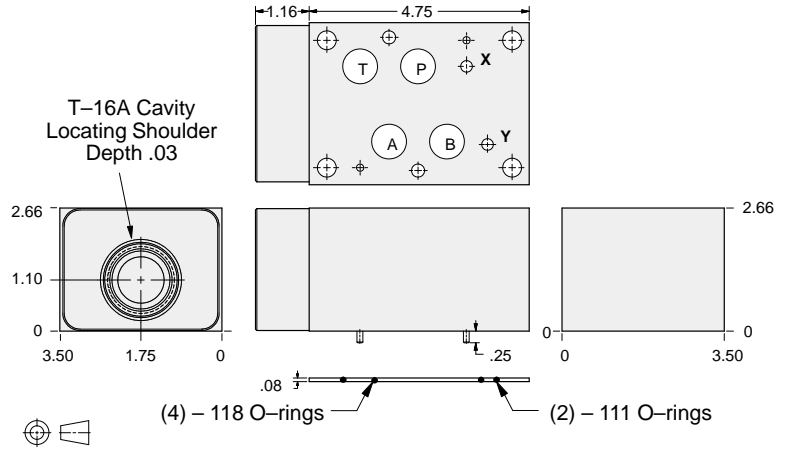
- Aluminum rated to 3000 psi and Ductile Iron rated to 5000 psi.
- See page viii for ordering cartridge/body and seals. Pressure ratings, material specifications on page xiv.



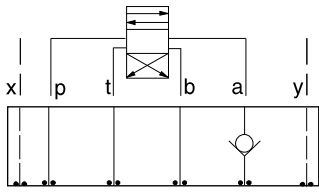
FUNCTION

On A
Free Flow Into Valve

Check Valves



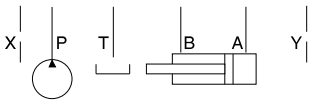
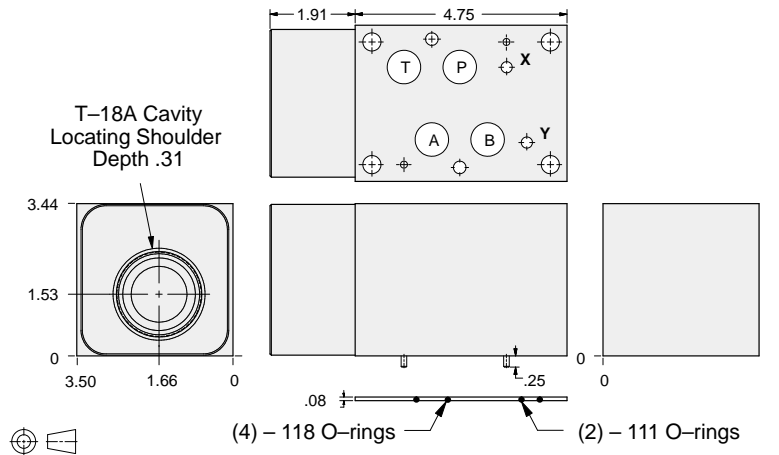
ALUMINUM		DUCTILE IRON	
Model Code	List Price	Model Code	List Price
DKA		DKA/S	



FUNCTION

On A
Free Flow Into Valve
(High Capacity)

Check Valves



ALUMINUM		DUCTILE IRON	
Model Code	List Price	Model Code	List Price
DKE		DKE/S	

07 CHECK

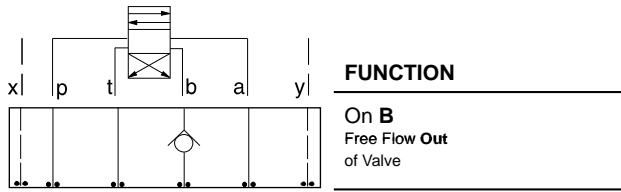
TYPICAL CARTRIDGES USED WITH BODIES SHOWN ABOVE			
	Check Valve, Free Flow Port 1 to Port 2 (Nose-to-Side)		
	CX*A Page 5.09		
OTHER VALVES:			



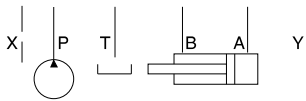
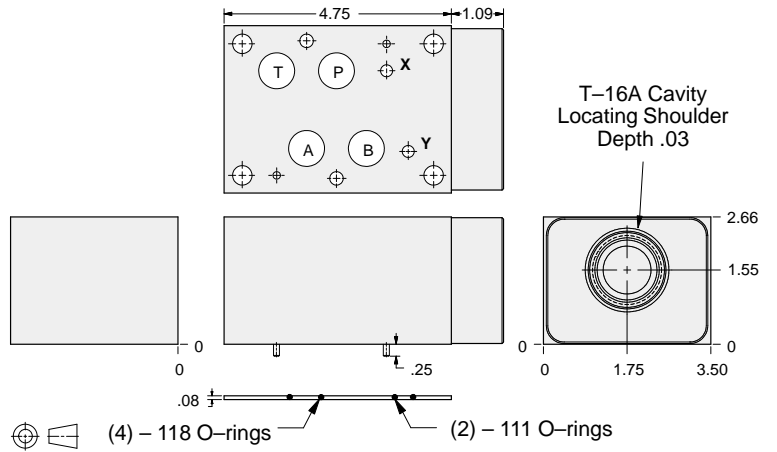
ISO 07 SANDWICH BODIES



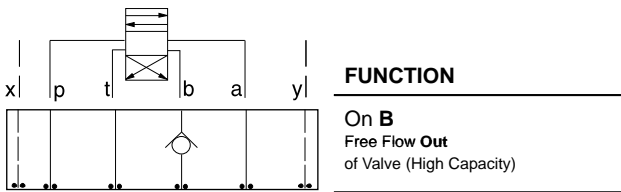
- Aluminum rated to 3000 psi and Ductile Iron rated to 5000 psi.
- See page viii for ordering cartridge/body and seals. Pressure ratings, material specifications on page xiv.



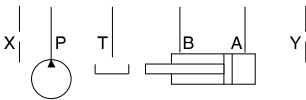
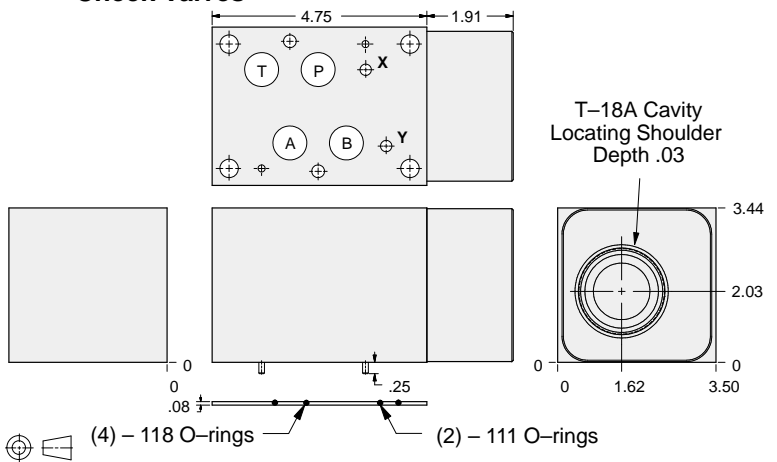
Check Valves



ALUMINUM		DUCTILE IRON	
Model Code	List Price	Model Code	List Price
DKD		DKD/S	



Check Valves



ALUMINUM		DUCTILE IRON	
Model Code	List Price	Model Code	List Price
DKI		DKI/S	

07 CHECK

TYPICAL CARTRIDGES USED WITH BODIES SHOWN ABOVE			
	Check Valve, Free Flow Port 1 to Port 2 (Nose-to-Side)		
	CX*A Page 5.09		
OTHER VALVES:			

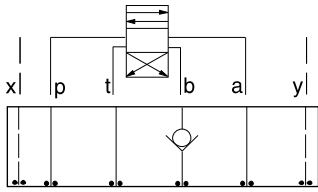


ISO 07 SANDWICH BODIES



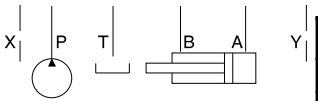
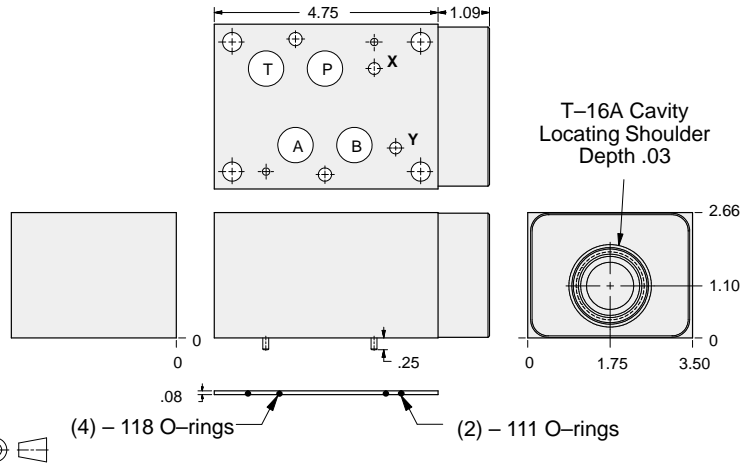
- Aluminum rated to 3000 psi and Ductile Iron rated to 5000 psi.
- See page viii for ordering cartridge/body and seals. Pressure ratings, material specifications on page xiv.

Check Valves



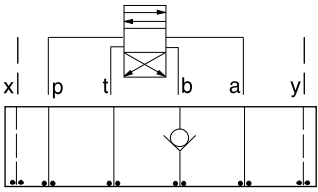
FUNCTION

On B
Free Flow Into Valve



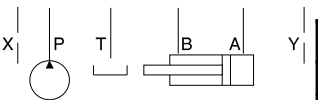
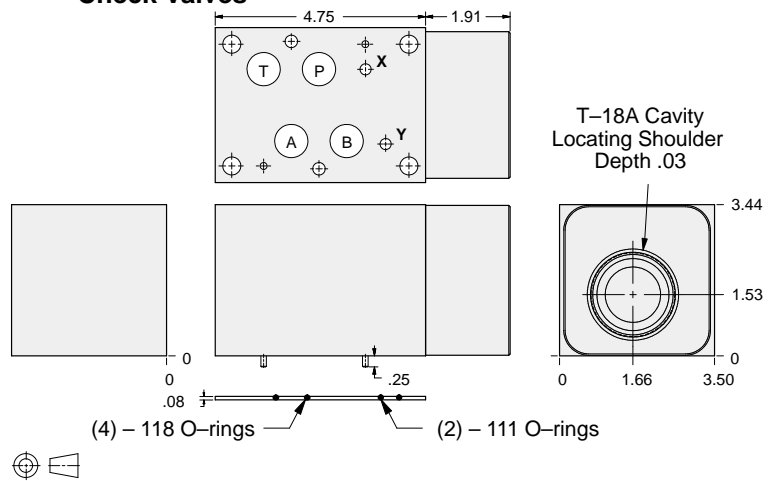
ALUMINUM		DUCTILE IRON	
Model Code	List Price	Model Code	List Price
DKB		DKB/S	

Check Valves



FUNCTION

On B
Free Flow Into Valve
(High Capacity)



ALUMINUM		DUCTILE IRON	
Model Code	List Price	Model Code	List Price
DKF		DKF/S	

07 CHECK

TYPICAL CARTRIDGES USED WITH BODIES SHOWN ABOVE

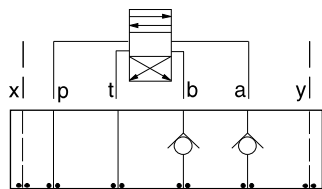
	Check Valve, Free Flow Port 1 to Port 2 (Nose-to-Side)		
	CX*A Page 5.09		
OTHER VALVES:			



ISO 07 SANDWICH BODIES



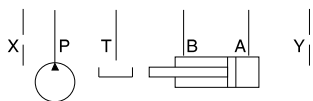
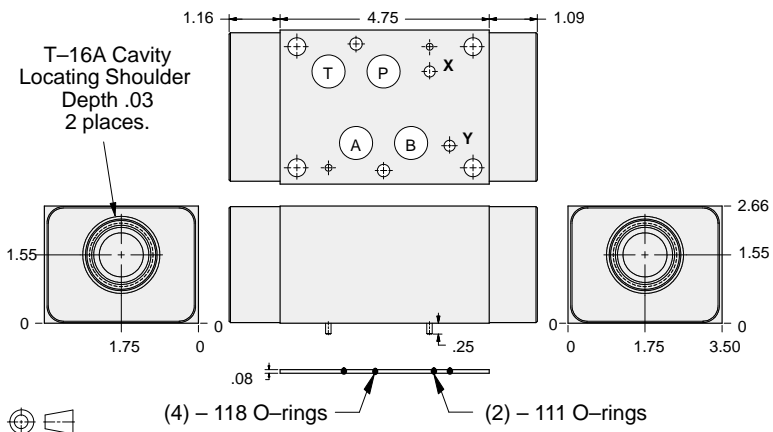
- Aluminum rated to 3000 psi and Ductile Iron rated to 5000 psi.
- See page viii for ordering cartridge/body and seals. Pressure ratings, material specifications on page xiv.



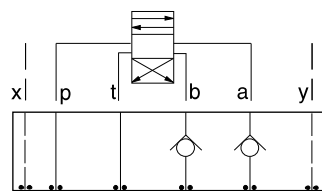
FUNCTION

On **A** and **B**
Free Flow Out
of Valve

Check Valves



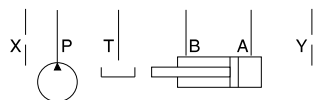
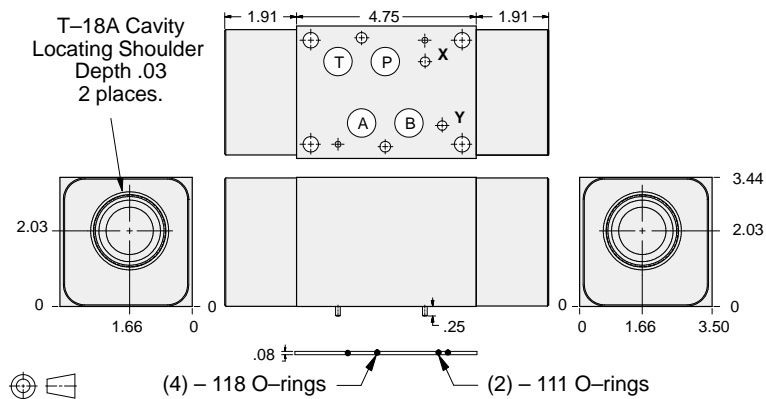
ALUMINUM		DUCTILE IRON	
Model Code	List Price	Model Code	List Price
DKZ		DKZ/S	



FUNCTION

On **A** and **B**
Free Flow Out
of Valve (High Capacity)

Check Valves



ALUMINUM		DUCTILE IRON	
Model Code	List Price	Model Code	List Price
DKU		DKU/S	

TYPICAL CARTRIDGES USED WITH BODIES SHOWN ABOVE

	Check Valve, Free Flow Port 1 to Port 2 (Nose-to-Side)		
	CX*A Page 5.09		
OTHER VALVES:			

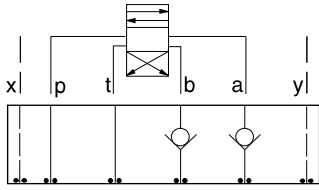
07 CHECK



ISO 07 SANDWICH BODIES



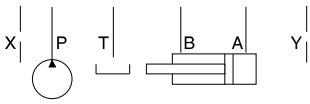
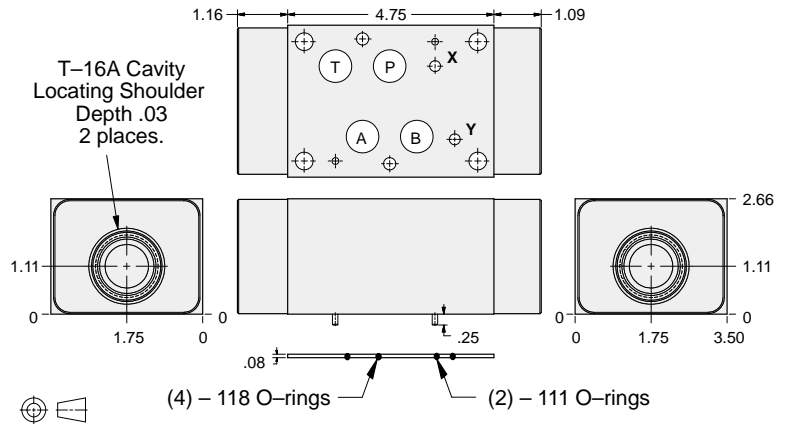
- Aluminum rated to 3000 psi and Ductile Iron rated to 5000 psi.
- See page viii for ordering cartridge/body and seals. Pressure ratings, material specifications on page xiv.



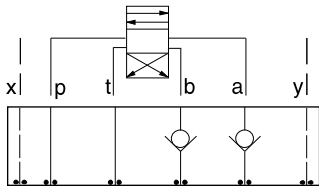
FUNCTION

On **A** and **B**
Free Flow Into Valve

Check Valves



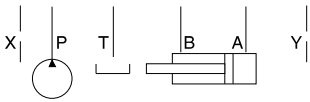
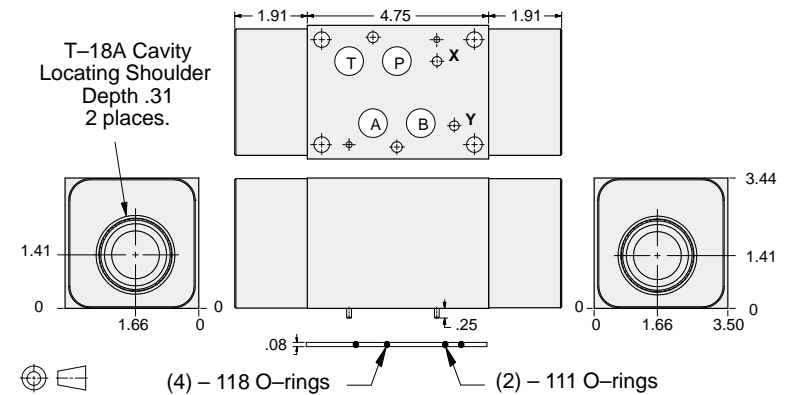
ALUMINUM		DUCTILE IRON	
Model Code	List Price	Model Code	List Price
DKY		DKY/S	



FUNCTION

On **A** and **B**
Free Flow Into Valve
(High Capacity)

Check Valves



ALUMINUM		DUCTILE IRON	
Model Code	List Price	Model Code	List Price
DKW		DKW/S	

07 CHECK

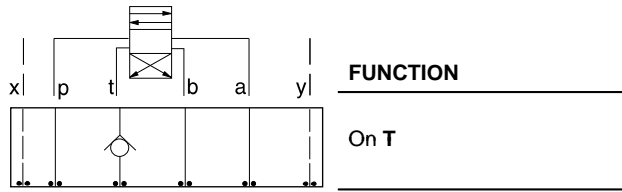
TYPICAL CARTRIDGES USED WITH BODIES SHOWN ABOVE			
	Check Valve, Free Flow Port 1 to Port 2 (Nose-to-Side)		
	CX*A Page 5.09		
OTHER VALVES:			



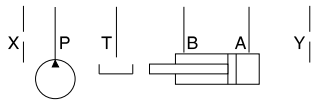
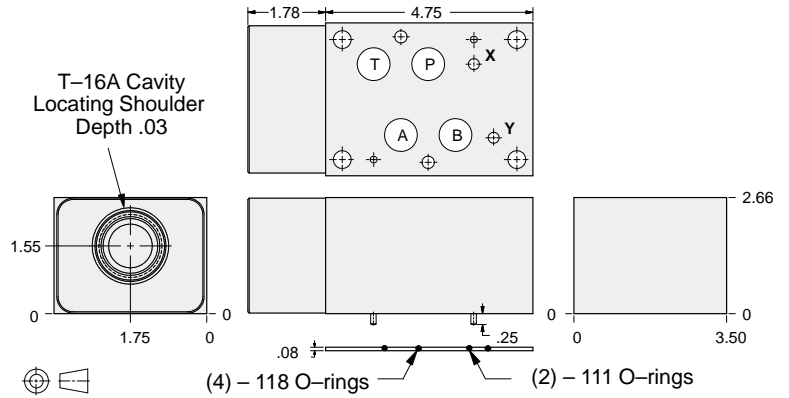
ISO 07 SANDWICH BODIES



- Aluminum rated to 3000 psi and Ductile Iron rated to 5000 psi.
- See page viii for ordering cartridge/body and seals. Pressure ratings, material specifications on page xiv.



Check Valves



ALUMINUM		DUCTILE IRON	
<i>Model Code</i>	<i>List Price</i>	<i>Model Code</i>	<i>List Price</i>
DKT		DKT/S	

07 CHECK

TYPICAL CARTRIDGES USED WITH BODIES SHOWN ABOVE			
	Check Valve, Free Flow Port 1 to Port 2 (Nose-to-Side)		
	CXHA Page 5.09		
OTHER VALVES:			