

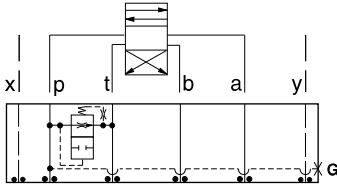


ISO 07 SANDWICH BODIES



- Aluminum rated to 3000 psi and Ductile Iron rated to 5000 psi.
- See page viii for ordering cartridge/body and seals. Pressure ratings, material specifications on page xiv.

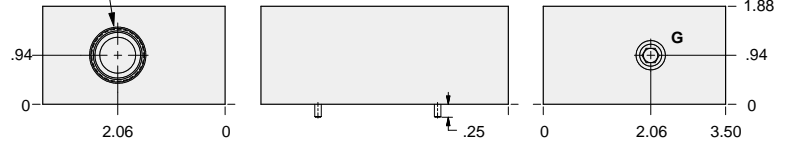
Circuit Savers



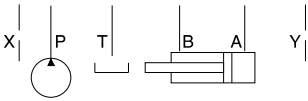
FUNCTION

Air-Bleed and Start-Up

T-3A Cavity Locating Shoulder Depth .03



(4) - 118 O-rings (2) - 111 O-rings



Gage Port (Plugged)	ALUMINUM		DUCTILE IRON	
	Model Code	List Price	Model Code	List Price
.25 NPTF	CKP		CKP/S	
.25 BSPP	CKP/M		CKP/T	

07 CIRCUIT SAVER

TYPICAL CARTRIDGES USED WITH BODIES SHOWN ABOVE			
	Air Bleed and Start-up Valve		
	NQEB Page 10.16		
OTHER VALVES:			

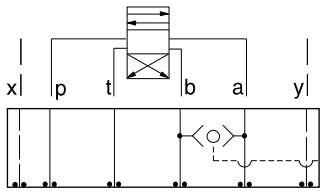


ISO 07 SANDWICH BODIES



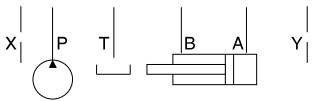
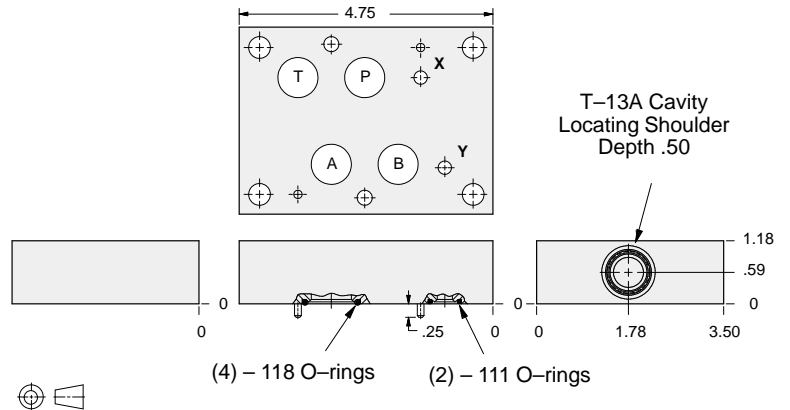
- Aluminum rated to 3000 psi and Ductile Iron rated to 5000 psi.
- See page viii for ordering cartridge/body and seals. Pressure ratings, material specifications on page xiv.

Circuit Savers



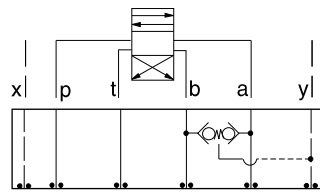
FUNCTION

Shuttle
A and B
Output External



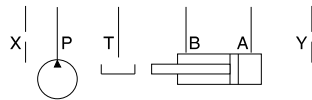
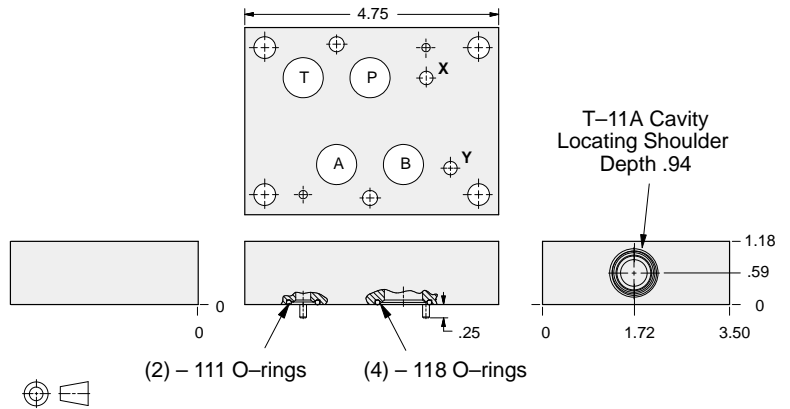
ALUMINUM		DUCTILE IRON	
<i>Model Code</i>	<i>List Price</i>	<i>Model Code</i>	<i>List Price</i>
DKS		DKS/S	

Circuit Savers



FUNCTION

Checks from
A and B
Output to Y Port



ALUMINUM		DUCTILE IRON	
<i>Model Code</i>	<i>List Price</i>	<i>Model Code</i>	<i>List Price</i>
BKS		BKS/S	

07 CIRCUIT SAVER

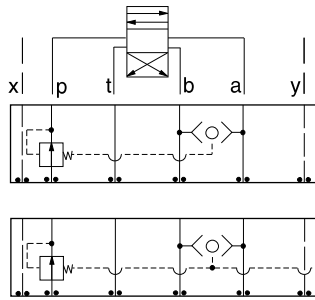
TYPICAL CARTRIDGES USED WITH BODIES SHOWN ABOVE			
<p>1-2 Ext.</p>	2 Port Shuttle Valve, Signal External		
	CSAA Page 10.09 (use with DKS)		
<p>1-2 3</p>	3 Port Back-to-Back Check Valve, Signal at Port 3		
	CDAB Page 10.10 (use with BKS)		
OTHER VALVES:			



ISO 07 SANDWICH BODIES



- Aluminum rated to 3000 psi and Ductile Iron rated to 5000 psi.
- See page viii for ordering cartridge/body and seals. Pressure ratings, material specifications on page xiv.

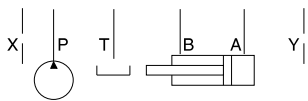
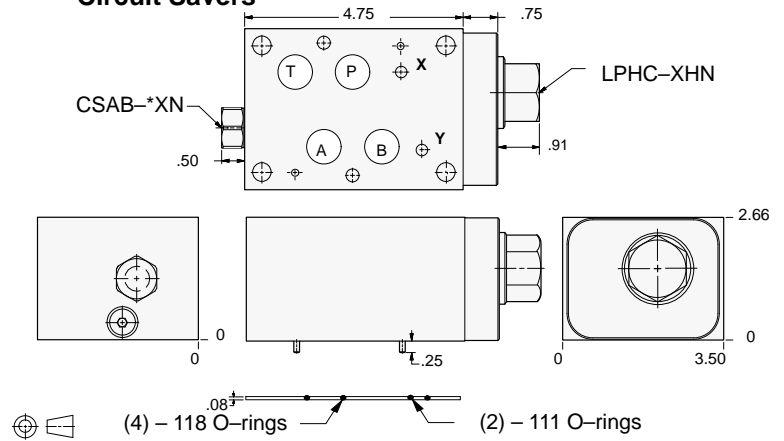


FUNCTION

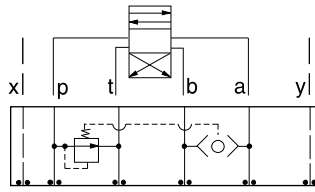
Pressure Compensator (Restrictive)

Pressure Compensator (Restrictive) w/Load-Sensing Port

Circuit Savers



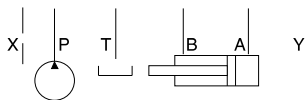
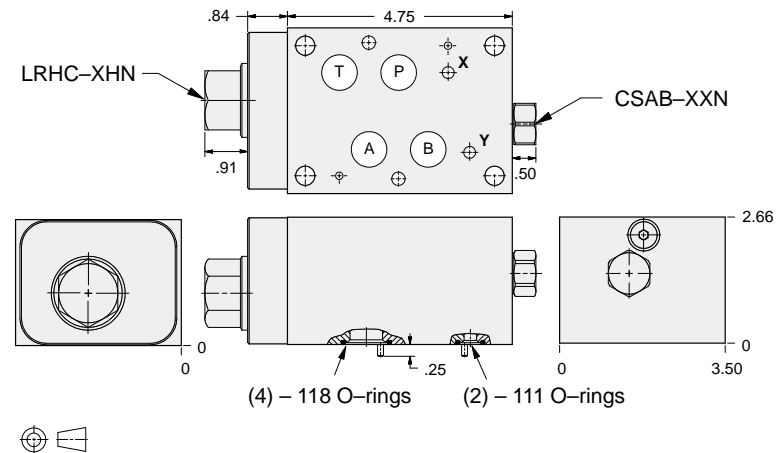
Shuttle Cartridge	External Shuttle Port	ALUMINUM		DUCTILE IRON	
		Model Code	List Price	Model Code	List Price
CSAB-XXN	None	YFFE-XHN-AB		YFFE-XHN-AB/S	
CSAB-AXN	SAE-4	YFFF-XHN-AB		YFFF-XHN-AB/S	
CSAB-BXN	.25 BSPP	YFFF-XHN-AB/M		YFFF-XHN-AB/T	



FUNCTION

Pressure Compensator (By-pass)

Circuit Savers



ALUMINUM		DUCTILE IRON	
Model Code	List Price	Model Code	List Price
YFFG-XHN-AB		YFFG-XHN-AB/S	

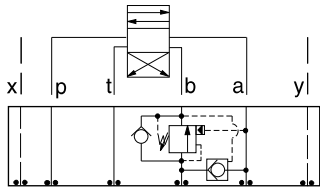
07 CIRCUIT SAVER



ISO 07 SANDWICH BODIES



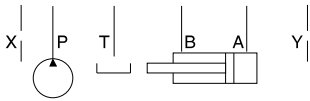
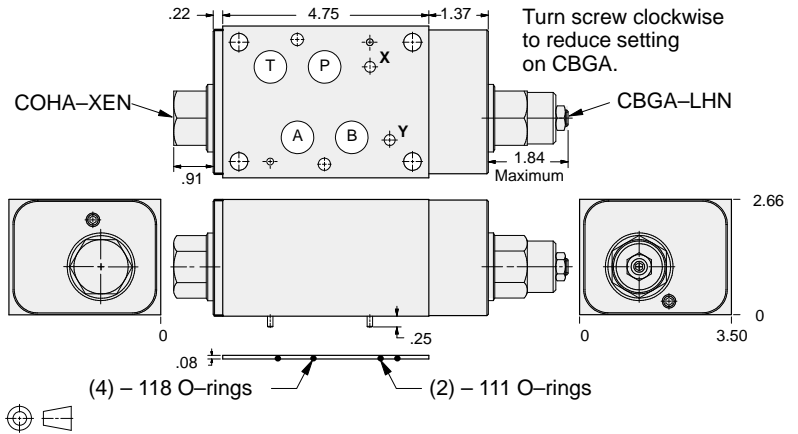
- Aluminum rated to 3000 psi and Ductile Iron rated to 5000 psi.
- See page viii for ordering cartridge/body and seals. Pressure ratings, material specifications on page xiv.



FUNCTION

B to A
Regenerative

Circuit Savers



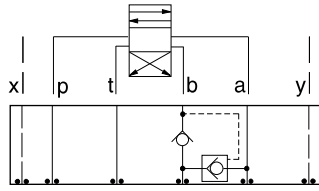
ALUMINUM		DUCTILE IRON	
<i>Model Code</i>	<i>List Price</i>	<i>Model Code</i>	<i>List Price</i>
YDFG-LHN-AB		YDFG-LHN-AB/S	



ISO 07 SANDWICH BODIES



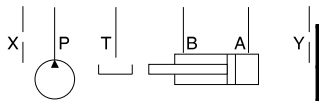
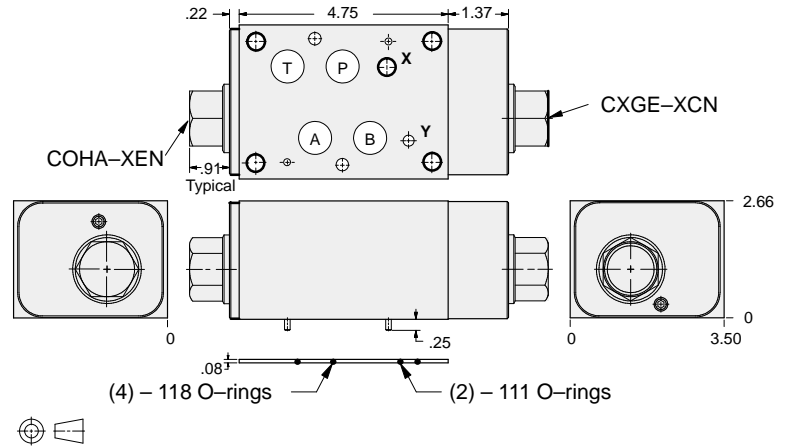
- Aluminum rated to 3000 psi and Ductile Iron rated to 5000 psi.
- See page viii for ordering cartridge/body and seals. Pressure ratings, material specifications on page xiv.



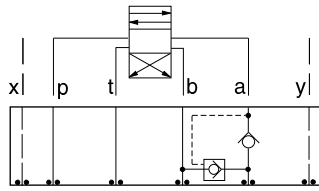
FUNCTION

B to A
Regenerative
(Full Time)

Circuit Savers



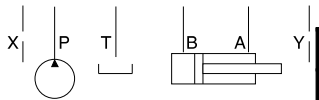
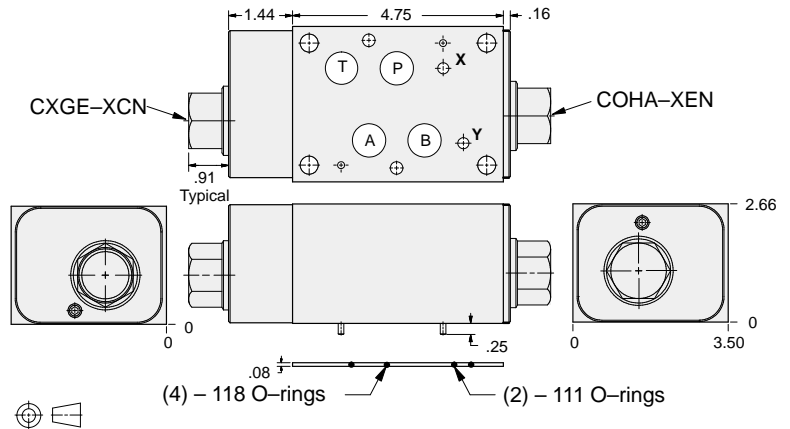
ALUMINUM		DUCTILE IRON	
Model Code	List Price	Model Code	List Price
YDFH-XCN-AB		YDFH-XCN-AB/S	



FUNCTION

A to B
Regenerative
(Full Time)

Circuit Savers



ALUMINUM		DUCTILE IRON	
Model Code	List Price	Model Code	List Price
YDFI-XCN-AB		YDFI-XCN-AB/S	

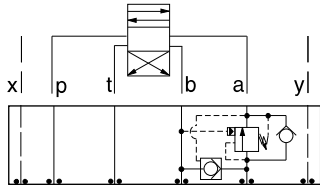
07 CIRCUIT SAVER



ISO 07 SANDWICH BODIES



- Aluminum rated to 3000 psi and Ductile Iron rated to 5000 psi.
- See page viii for ordering cartridge/body and seals. Pressure ratings, material specifications on page xiv.

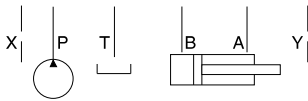
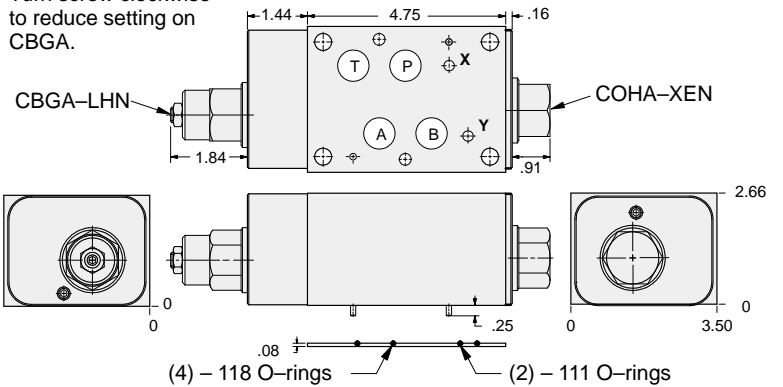


FUNCTION

A to B
Regenerative

Circuit Savers

Turn screw clockwise to reduce setting on CBGA.



ALUMINUM		DUCTILE IRON	
<i>Model Code</i>	<i>List Price</i>	<i>Model Code</i>	<i>List Price</i>
YDFE-LHN-AB		YDFE-LHN-AB/S	