

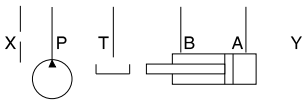
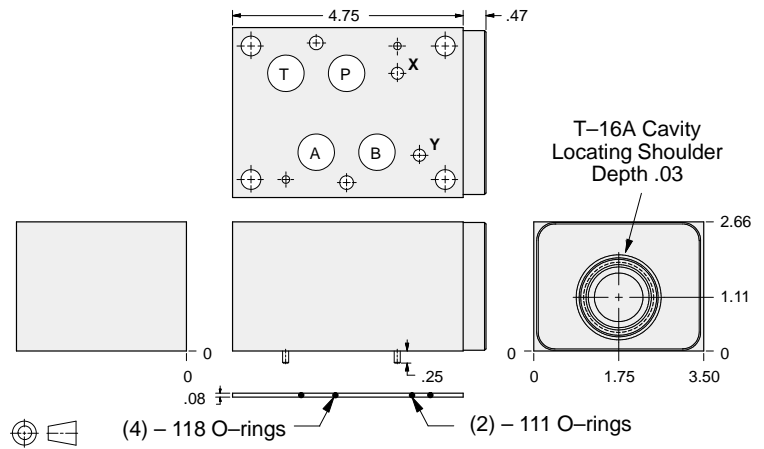
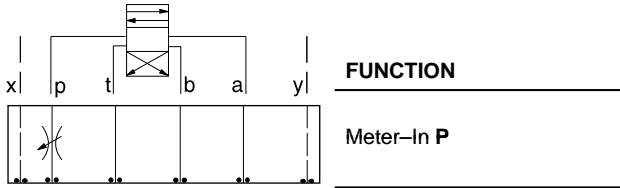


ISO 07 SANDWICH BODIES



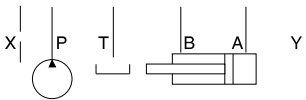
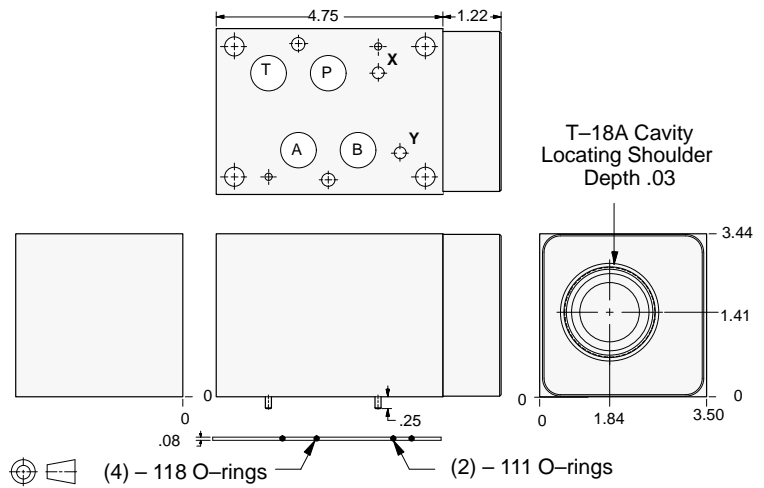
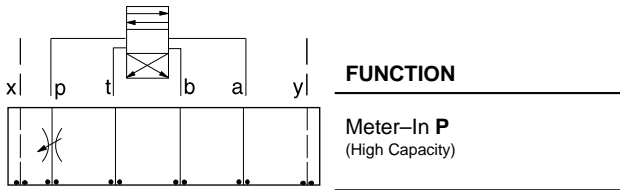
- Aluminum rated to 3000 psi and Ductile Iron rated to 5000 psi.
- See page viii for ordering cartridge/body and seals. Pressure ratings, material specifications on page xiv.

Flow Control Valves



ALUMINUM		DUCTILE IRON	
Model Code	List Price	Model Code	List Price
DKP		DKP/S	

Flow Control Valves



ALUMINUM		DUCTILE IRON	
Model Code	List Price	Model Code	List Price
DKO		DKO/S	

TYPICAL CARTRIDGES USED WITH BODIES SHOWN ABOVE

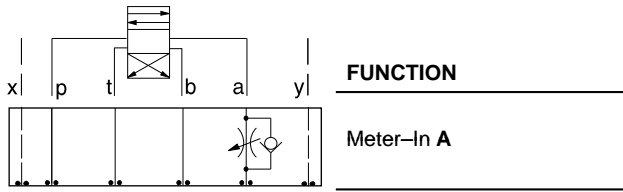
	Fully Adjustable Needle Valve		
	NF*C Page 5.13		
	Fixed Orifice, Pressure-Compensated Flow Control		
	FX*A Page 5.21		
OTHER VALVES:			



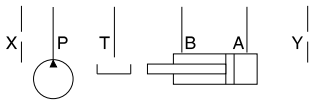
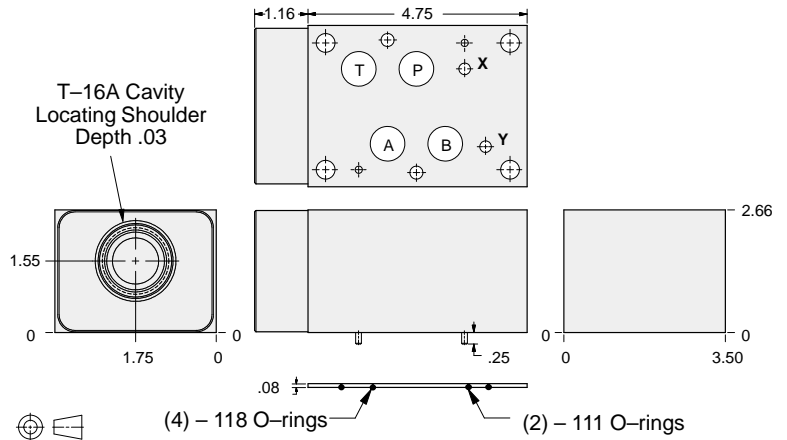
ISO 07 SANDWICH BODIES



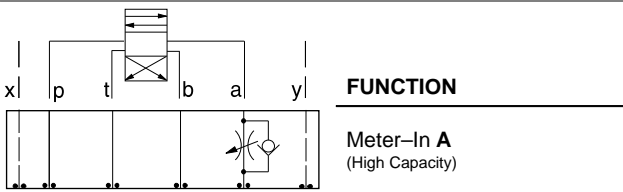
- Aluminum rated to 3000 psi and Ductile Iron rated to 5000 psi.
- See page viii for ordering cartridge/body and seals. Pressure ratings, material specifications on page xiv.



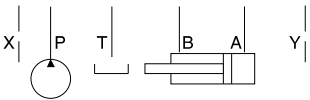
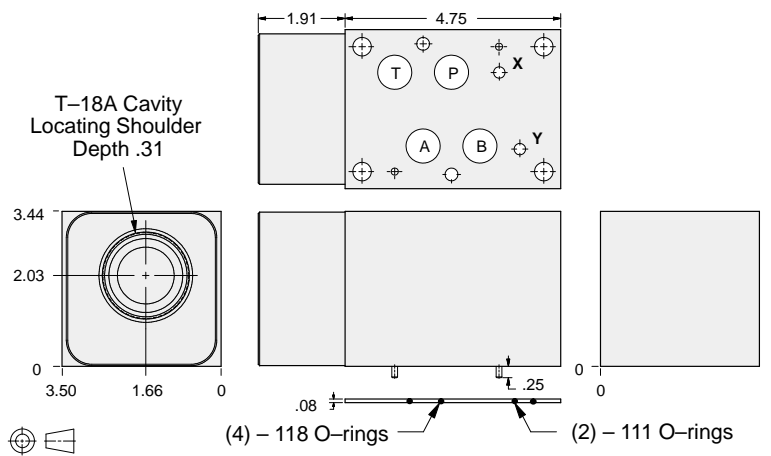
Flow Control Valves



ALUMINUM		DUCTILE IRON	
Model Code	List Price	Model Code	List Price
DKC		DKC/S	



Flow Control Valves



ALUMINUM		DUCTILE IRON	
Model Code	List Price	Model Code	List Price
DKG		DKG/S	

07 FLOW CONTROL

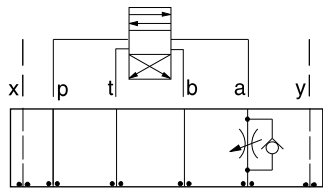
TYPICAL CARTRIDGES USED WITH BODIES SHOWN ABOVE			
	Fully Adjustable Needle Valve NF*C Page 5.13		Fixed Orifice, Pressure-Compensated Flow Control FX*A Page 5.21
	Fully Adjustable Needle Valve with Reverse Free Flow Check NC*B Page 5.17		Fixed Orifice, Pressure-Compensated Flow Control with Reverse Free Flow Check FC*B Page 5.23
	Fully Adjustable Needle Valve with Reverse Free Flow Check, Low Flow NC*C Page 5.19		Fully Adjustable, Pressure-Compensated Flow Control with Reverse Free Flow Check FD*A Page 5.25
OTHER VALVES:	CN*C		



ISO 07 SANDWICH BODIES



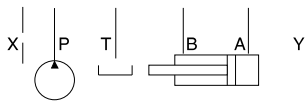
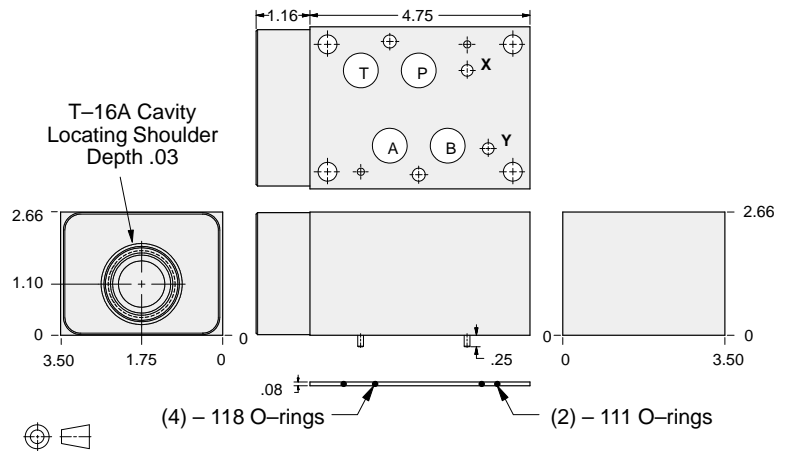
- Aluminum rated to 3000 psi and Ductile Iron rated to 5000 psi.
- See page viii for ordering cartridge/body and seals. Pressure ratings, material specifications on page xiv.



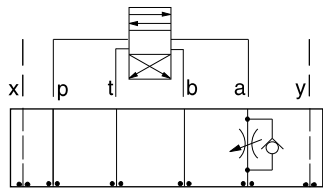
FUNCTION

Meter-Out A

Flow Control Valves



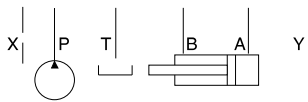
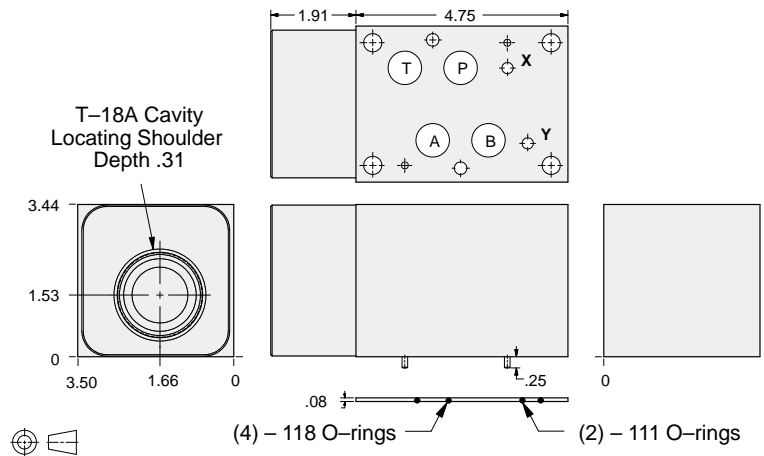
ALUMINUM		DUCTILE IRON	
Model Code	List Price	Model Code	List Price
DKA		DKA/S	



FUNCTION

Meter-Out A
(High Capacity)

Flow Control Valves



ALUMINUM		DUCTILE IRON	
Model Code	List Price	Model Code	List Price
DKE		DKE/S	

07 FLOW CONTROL

TYPICAL CARTRIDGES USED WITH BODIES SHOWN ABOVE

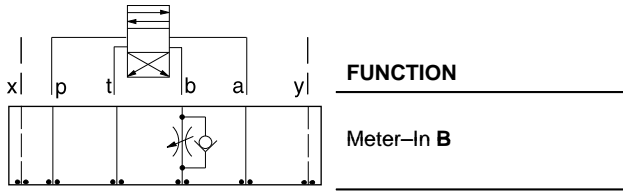
	Fully Adjustable Needle Valve		Fixed Orifice, Pressure-Compensated Flow Control
	NF*C Page 5.13		FX*A Page 5.21
	Fully Adjustable Needle Valve with Reverse Free Flow Check		Fixed Orifice, Pressure-Compensated Flow Control with Reverse Free Flow Check
	NC*B Page 5.17		FC*B Page 5.23
	Fully Adjustable Needle Valve with Reverse Free Flow Check, Low Flow		Fully Adjustable, Pressure-Compensated Flow Control with Reverse Free Flow Check
	NC*C Page 5.19		FD*A Page 5.25
OTHER VALVES:	CN*C		



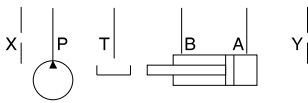
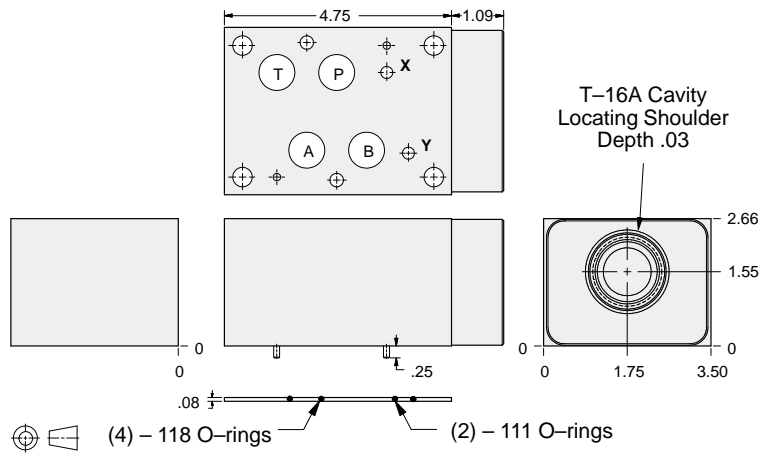
ISO 07 SANDWICH BODIES



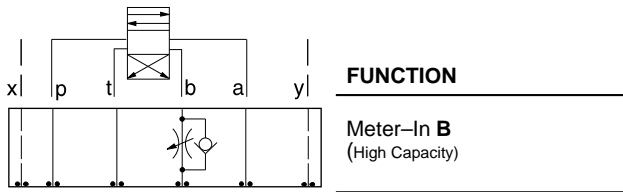
- Aluminum rated to 3000 psi and Ductile Iron rated to 5000 psi.
- See page viii for ordering cartridge/body and seals. Pressure ratings, material specifications on page xiv.



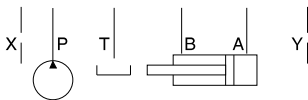
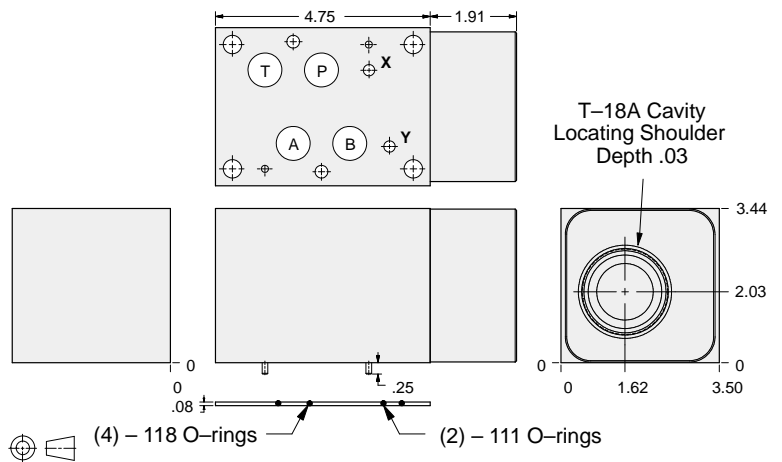
Flow Control Valves



ALUMINUM		DUCTILE IRON	
Model Code	List Price	Model Code	List Price
DKD		DKD/S	



Flow Control Valves



ALUMINUM		DUCTILE IRON	
Model Code	List Price	Model Code	List Price
DKI		DKI/S	

TYPICAL CARTRIDGES USED WITH BODIES SHOWN ABOVE

	Fully Adjustable Needle Valve		Fixed Orifice, Pressure-Compensated Flow Control
	NF*C Page 5.13		FX*A Page 5.21
	Fully Adjustable Needle Valve with Reverse Free Flow Check		Fixed Orifice, Pressure-Compensated Flow Control with Reverse Free Flow Check
	NC*B Page 5.17		FC*B Page 5.23
	Fully Adjustable Needle Valve with Reverse Free Flow Check, Low Flow		Fully Adjustable, Pressure-Compensated Flow Control with Reverse Free Flow Check
	NC*C Page 5.19		FD*A Page 5.25
OTHER VALVES:	CN*C		

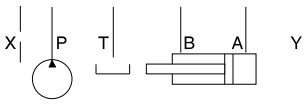
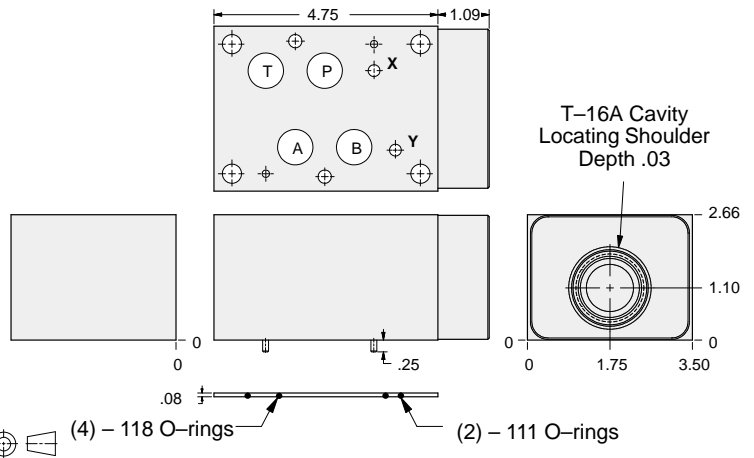
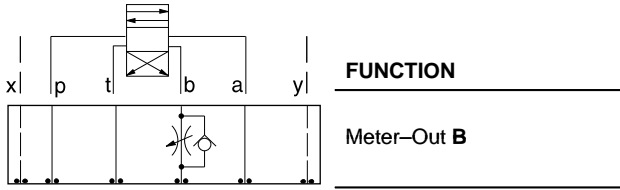


ISO 07 SANDWICH BODIES



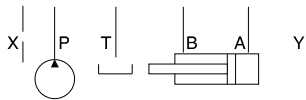
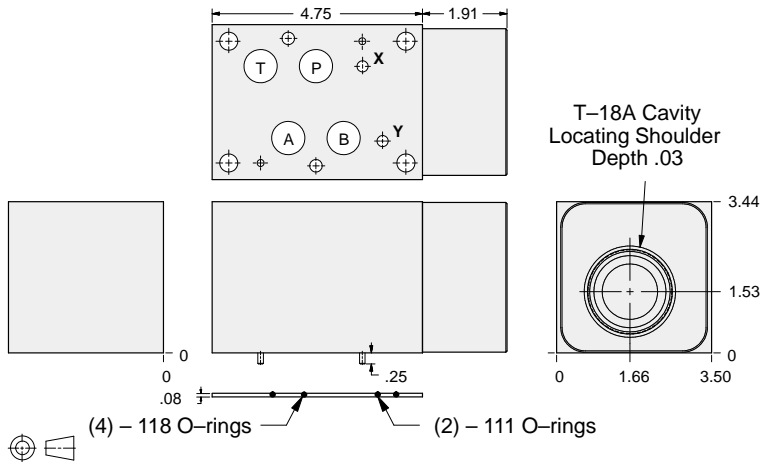
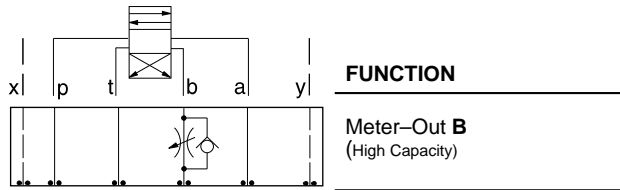
- Aluminum rated to 3000 psi and Ductile Iron rated to 5000 psi.
- See page viii for ordering cartridge/body and seals. Pressure ratings, material specifications on page xiv.

Flow Control Valves



ALUMINUM		DUCTILE IRON	
Model Code	List Price	Model Code	List Price
DKB		DKB/S	

Flow Control Valves



ALUMINUM		DUCTILE IRON	
Model Code	List Price	Model Code	List Price
DKF		DKF/S	

TYPICAL CARTRIDGES USED WITH BODIES SHOWN ABOVE

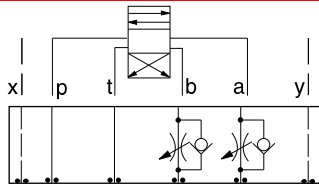
	Fully Adjustable Needle Valve		Fixed Orifice, Pressure-Compensated Flow Control
	NF*C Page 5.13		FX*A Page 5.21
	Fully Adjustable Needle Valve with Reverse Free Flow Check		Fixed Orifice, Pressure-Compensated Flow Control with Reverse Free Flow Check
	NC*B Page 5.17		FC*B Page 5.23
	Fully Adjustable Needle Valve with Reverse Free Flow Check, Low Flow		Fully Adjustable, Pressure-Compensated Flow Control with Reverse Free Flow Check
	NC*C Page 5.19		FD*A Page 5.25
OTHER VALVES:	CN*C		



ISO 07 SANDWICH BODIES



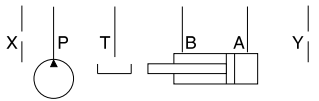
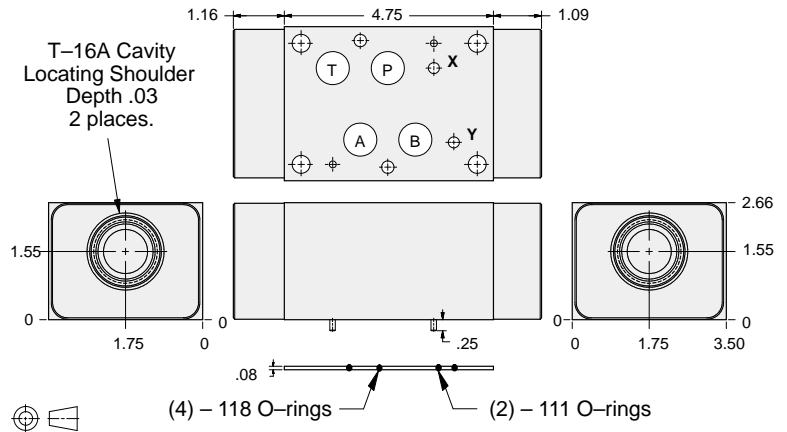
- Aluminum rated to 3000 psi and Ductile Iron rated to 5000 psi.
- See page viii for ordering cartridge/body and seals. Pressure ratings, material specifications on page xiv.



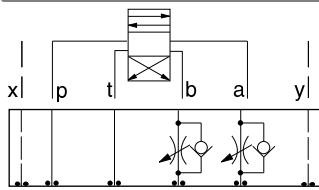
FUNCTION

Meter-In
A and B

Flow Control Valves



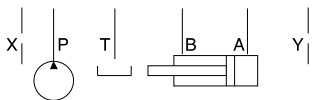
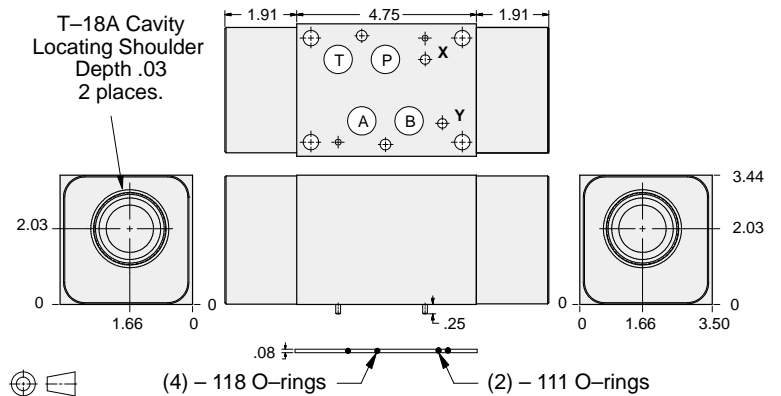
ALUMINUM		DUCTILE IRON	
Model Code	List Price	Model Code	List Price
DKZ		DKZ/S	



FUNCTION

Meter-In
A and B
(High Capacity)

Flow Control Valves



ALUMINUM		DUCTILE IRON	
Model Code	List Price	Model Code	List Price
DKU		DKU/S	

07 FLOW CONTROL

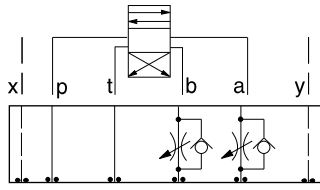
TYPICAL CARTRIDGES USED WITH BODIES SHOWN ABOVE			
	Fully Adjustable Needle Valve		Fixed Orifice, Pressure-Compensated Flow Control
	NF*C Page 5.13		FX*A Page 5.21
	Fully Adjustable Needle Valve with Reverse Free Flow Check		Fixed Orifice, Pressure-Compensated Flow Control with Reverse Free Flow Check
	NC*B Page 5.17		FC*B Page 5.23
	Fully Adjustable Needle Valve with Reverse Free Flow Check, Low Flow		Fully Adjustable, Pressure-Compensated Flow Control with Reverse Free Flow Check
	NC*C Page 5.19		FD*A Page 5.25
OTHER VALVES:	CNGC, CNIC		



ISO 07 SANDWICH BODIES



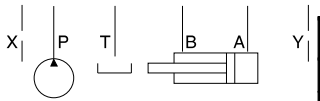
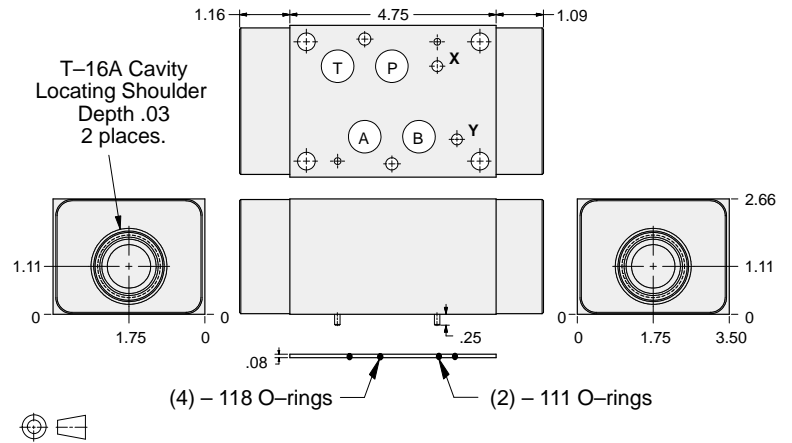
- Aluminum rated to 3000 psi and Ductile Iron rated to 5000 psi.
- See page viii for ordering cartridge/body and seals. Pressure ratings, material specifications on page xiv.



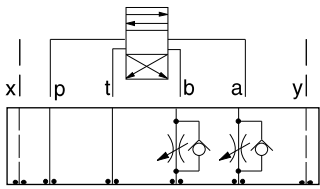
FUNCTION

Meter-Out
A and B

Flow Control Valves



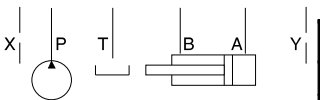
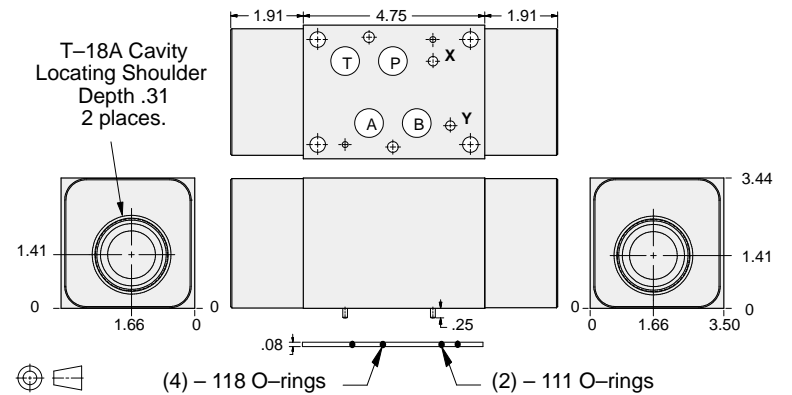
ALUMINUM		DUCTILE IRON	
Model Code	List Price	Model Code	List Price
DKY		DKY/S	



FUNCTION

Meter-Out
A and B
(High Capacity)

Flow Control Valves



ALUMINUM		DUCTILE IRON	
Model Code	List Price	Model Code	List Price
DKW		DKW/S	

07 FLOW CONTROL

TYPICAL CARTRIDGES USED WITH BODIES SHOWN ABOVE

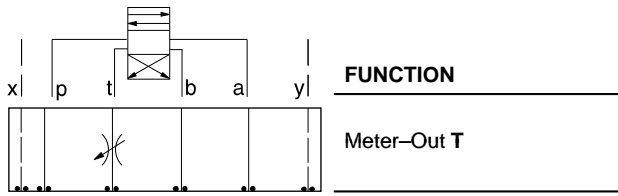
	Fully Adjustable Needle Valve NF*C Page 5.13		Fixed Orifice, Pressure-Compensated Flow Control FX*A Page 5.21
	Fully Adjustable Needle Valve with Reverse Free Flow Check NC*B Page 5.17		Fixed Orifice, Pressure-Compensated Flow Control with Reverse Free Flow Check FC*B Page 5.23
	Fully Adjustable Needle Valve with Reverse Free Flow Check, Low Flow NC*C Page 5.19		Fully Adjustable, Pressure-Compensated Flow Control with Reverse Free Flow Check FD*A Page 5.25
OTHER VALVES:	CN*C		



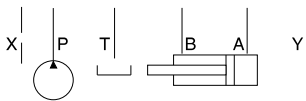
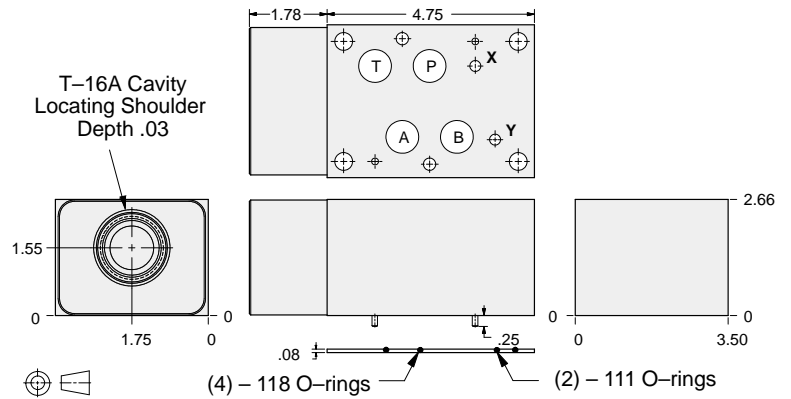
ISO 07 SANDWICH BODIES



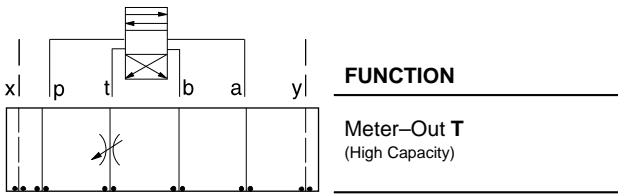
- Aluminum rated to 3000 psi and Ductile Iron rated to 5000 psi.
- See page viii for ordering cartridge/body and seals. Pressure ratings, material specifications on page xiv.



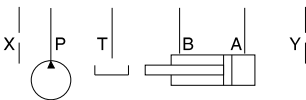
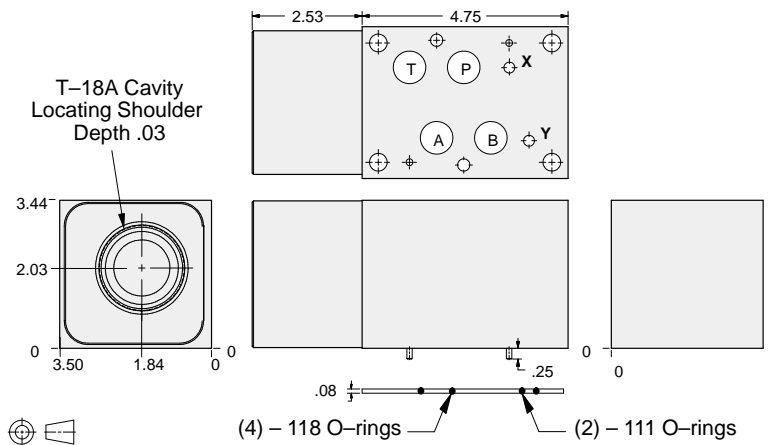
Flow Control Valves



ALUMINUM		DUCTILE IRON	
Model Code	List Price	Model Code	List Price
DKT		DKT/S	



Flow Control Valves



ALUMINUM		DUCTILE IRON	
Model Code	List Price	Model Code	List Price
DKV		DKV/S	

TYPICAL CARTRIDGES USED WITH BODIES SHOWN ABOVE

	Fully Adjustable Needle Valve		Fixed Orifice, Pressure-Compensated Flow Control
	NF*C Page 5.13		FX*A Page 5.21
	Fully Adjustable Needle Valve with Reverse Free Flow Check		Fixed Orifice, Pressure-Compensated Flow Control with Reverse Free Flow Check
	NC*B Page 5.17		FC*B Page 5.23
	Fully Adjustable Needle Valve with Reverse Free Flow Check, Low Flow		Fully Adjustable, Pressure-Compensated Flow Control with Reverse Free Flow Check
	NC*C Page 5.19		FD*A Page 5.25
OTHER VALVES:	CN*C		