

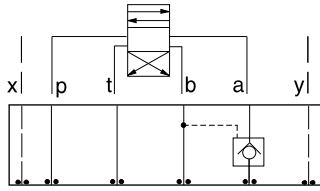


ISO 07 SANDWICH BODIES



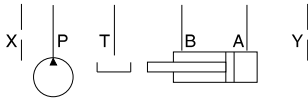
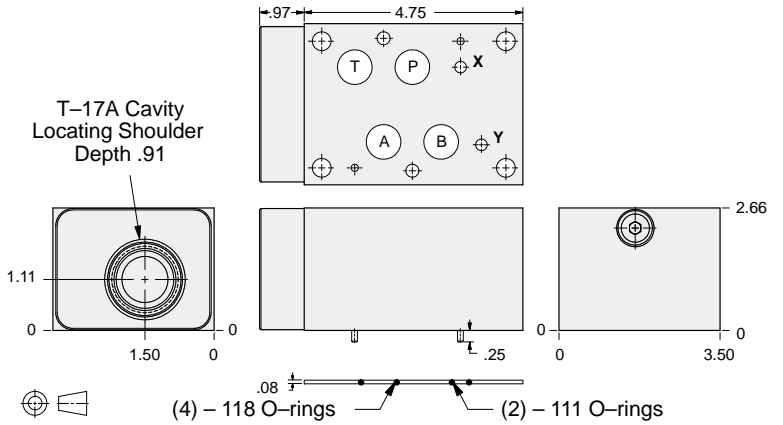
- Aluminum rated to 3000 psi and Ductile Iron rated to 5000 psi.
- See page viii for ordering cartridge/body and seals. Pressure ratings, material specifications on page xiv.

Pilot Operated Check Valves



FUNCTION

On A
Pilot from B



ALUMINUM		DUCTILE IRON	
Model Code	List Price	Model Code	List Price
BKA		BKA/S	

07 P.O. CHECK

TYPICAL CARTRIDGES USED WITH BODIES SHOWN ABOVE			
	<i>Pilot-to-Open Check Valve, 3:1 Pilot Ratio</i>		
	CKGB Page 4.17		
OTHER VALVES:			

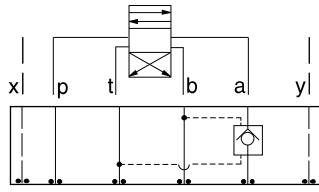


ISO 07 SANDWICH BODIES



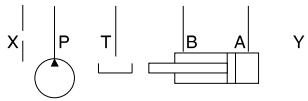
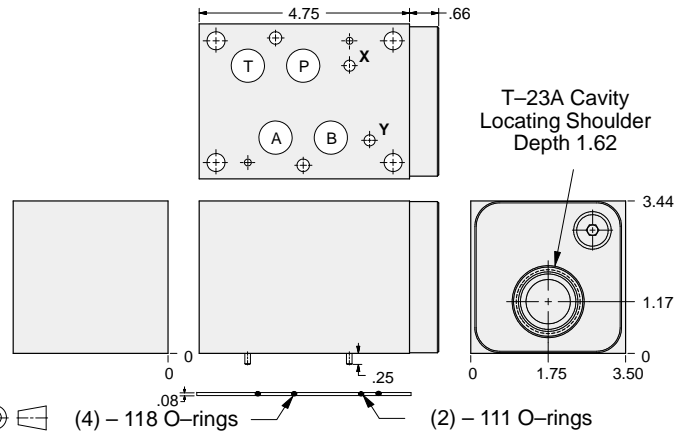
- Aluminum rated to 3000 psi and Ductile Iron rated to 5000 psi.
- See page viii for ordering cartridge/body and seals. Pressure ratings, material specifications on page xiv.

Pilot Operated Check Valves



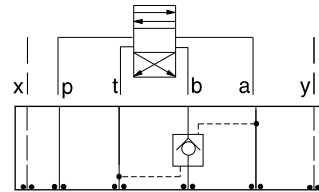
FUNCTION

On A
Pilot from B
Vent to T



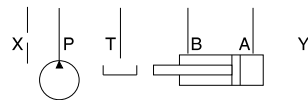
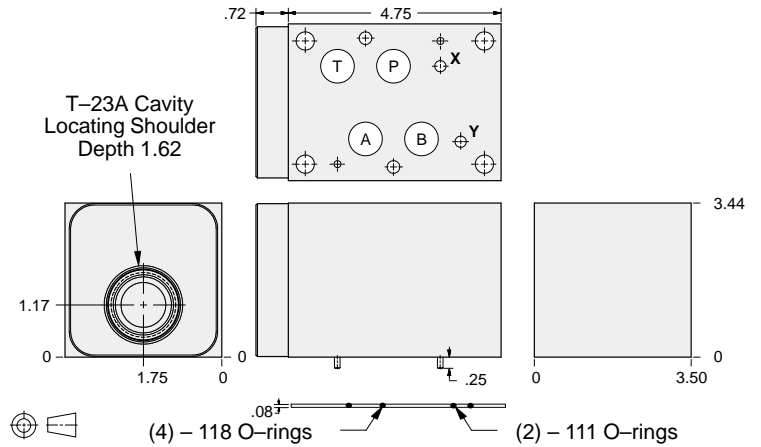
ALUMINUM		DUCTILE IRON	
Model Code	List Price	Model Code	List Price
NKA		NKA/S	

Pilot Operated Check Valves



FUNCTION

On B
Pilot from A
Vent to T



ALUMINUM		DUCTILE IRON	
Model Code	List Price	Model Code	List Price
NKB		NKB/S	

TYPICAL CARTRIDGES USED WITH BODIES SHOWN ABOVE

	Vented Pilot-to-Open Check Valve, 3:1 Pilot Ratio		
	CVGV Page 4.23		
OTHER VALVES:			

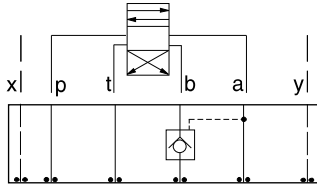


ISO 07 SANDWICH BODIES



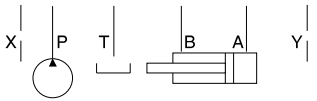
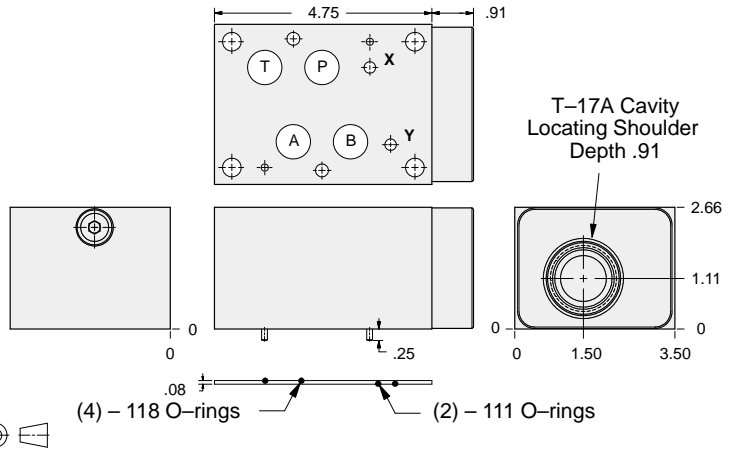
- Aluminum rated to 3000 psi and Ductile Iron rated to 5000 psi.
- See page viii for ordering cartridge/body and seals. Pressure ratings, material specifications on page xiv.

Pilot Operated Check Valves

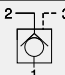


FUNCTION

On B
Pilot from A



ALUMINUM		DUCTILE IRON	
Model Code	List Price	Model Code	List Price
BKB		BKB/S	

TYPICAL CARTRIDGES USED WITH BODIES SHOWN ABOVE			
	Pilot-to-Open Check Valve, 3:1 Pilot Ratio		
	CKGBPage 4.17		
OTHER VALVES:			

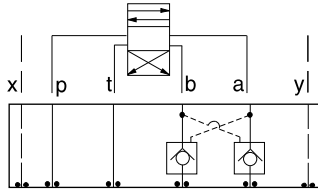


ISO 07 SANDWICH BODIES



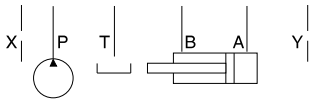
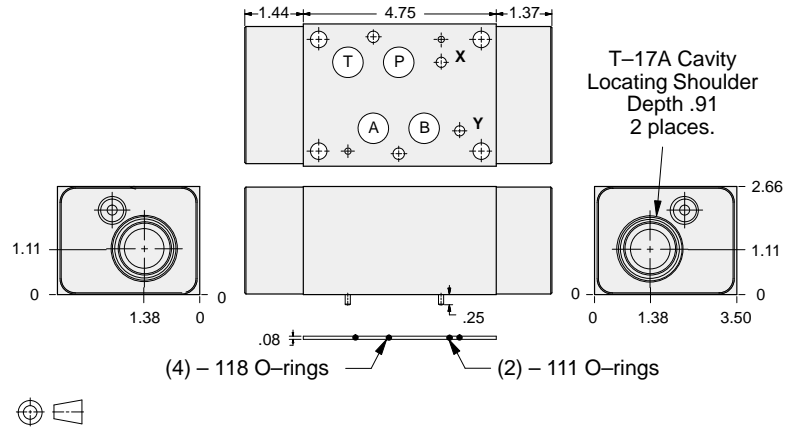
- Aluminum rated to 3000 psi and Ductile Iron rated to 5000 psi.
- See page viii for ordering cartridge/body and seals. Pressure ratings, material specifications on page xiv.

Pilot Operated Check Valves



FUNCTION

On A and B
Cross-Piloted



ALUMINUM		DUCTILE IRON	
Model Code	List Price	Model Code	List Price
BKY		BKY/S	

07 P.O. CHECK

TYPICAL CARTRIDGES USED WITH BODIES SHOWN ABOVE			
	Pilot-to-Open Check Valve, 3:1 Pilot Ratio		
	CKGB Page 4.17		
OTHER VALVES:			

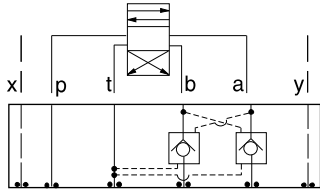


ISO 07 SANDWICH BODIES



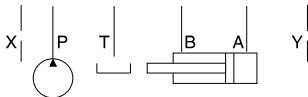
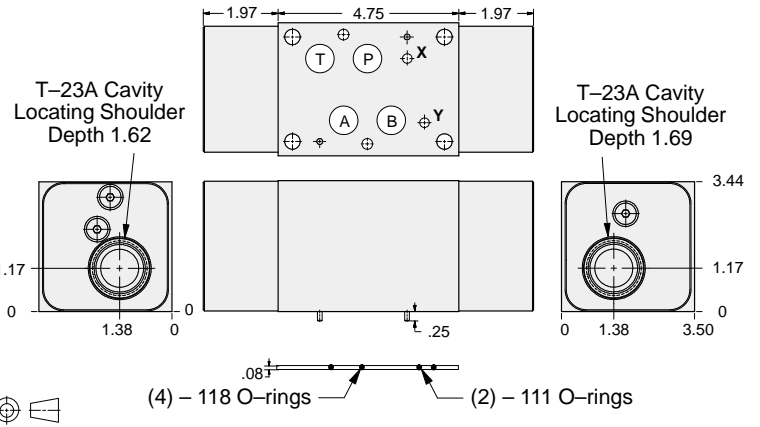
- Aluminum rated to 3000 psi and Ductile Iron rated to 5000 psi.
- See page viii for ordering cartridge/body and seals. Pressure ratings, material specifications on page xiv.

Pilot Operated Check Valves



FUNCTION

On **A** and **B**
Cross-Piloted
Vents to **T**



ALUMINUM		DUCTILE IRON	
Model Code	List Price	Model Code	List Price
NKY		NKY/S	

07 P.O. CHECK

TYPICAL CARTRIDGES USED WITH BODIES SHOWN ABOVE			
	Vented Pilot-to-Open Check Valve, 3:1 Pilot Ratio		
	CVGV Page 4.23		
OTHER VALVES:			