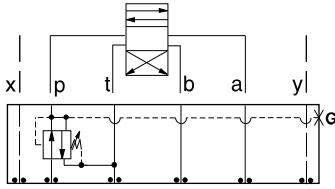




ISO 07 SANDWICH BODIES



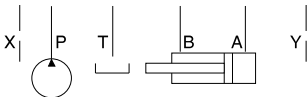
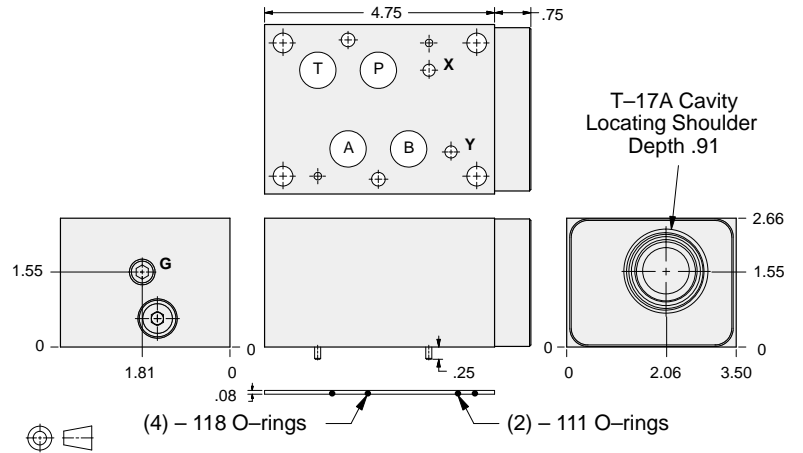
- Aluminum rated to 3000 psi and Ductile Iron rated to 5000 psi.
- See page viii for ordering cartridge/body and seals. Pressure ratings, material specifications on page xiv.



FUNCTION

On P Tank to T
Drained to T

Reducing/Relieving Valves



Gage Port (Plugged)	ALUMINUM		DUCTILE IRON	
	Model Code	List Price	Model Code	List Price
.25 NPTF	BKP		BKP/S	
.25 BSPP	BKP/M		BKP/T	

07 REDUCING/RELIEVING

TYPICAL CARTRIDGES USED WITH BODIES SHOWN ABOVE			
	Pilot Operated Reducing/Relieving Valve		
	PPHB Page 3.11		
	Air Controlled, Pilot Operated Reducing/Relieving Valve		
	PPHC Page 3.13		
OTHER VALVES:			

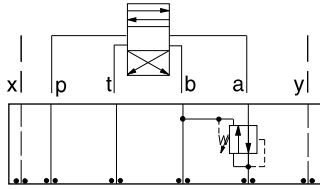


ISO 07 SANDWICH BODIES



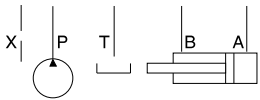
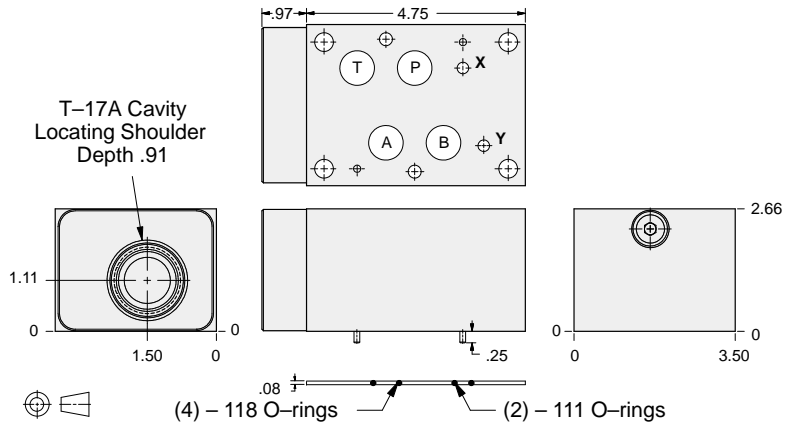
- Aluminum rated to 3000 psi and Ductile Iron rated to 5000 psi.
- See page viii for ordering cartridge/body and seals. Pressure ratings, material specifications on page xiv.

Reducing/Relieving Valves



FUNCTION

On A Tank to B
Drained to B



ALUMINUM		DUCTILE IRON	
Model Code	List Price	Model Code	List Price
BJA		BJA/S	

07 REDUCING/RELIEVING

TYPICAL CARTRIDGES USED WITH BODIES SHOWN ABOVE			
	<i>Pilot Operated Reducing/Relieving Valve</i>		
	PPHB Page 3.11		
OTHER VALVES:			

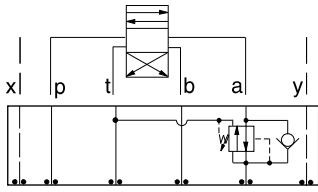


ISO 07 SANDWICH BODIES



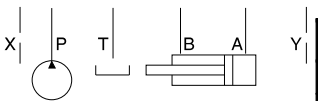
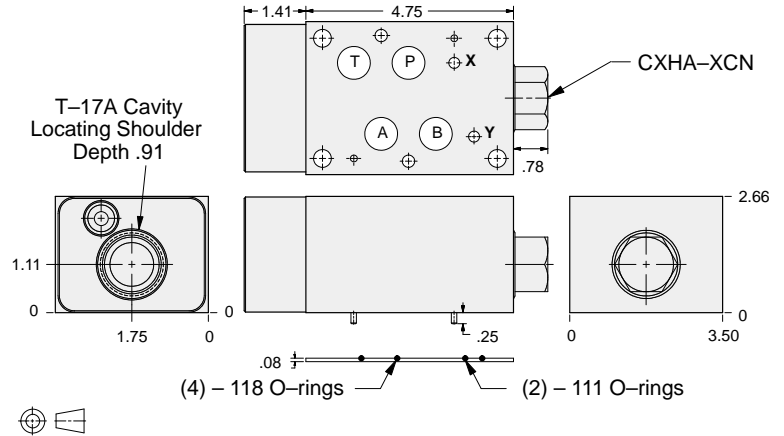
- Aluminum rated to 3000 psi and Ductile Iron rated to 5000 psi.
- See page viii for ordering cartridge/body and seals. Pressure ratings, material specifications on page xiv.

Reducing/Relieving Valves



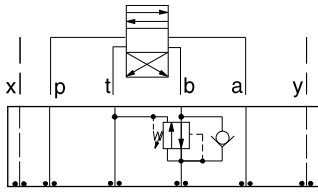
FUNCTION

On A Tank to T
Drained to T
Reverse FF Check



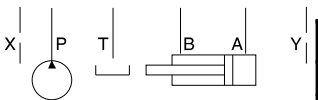
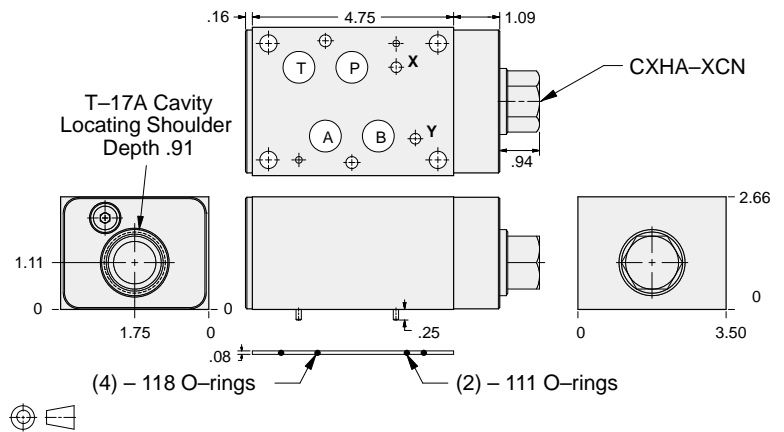
ALUMINUM		DUCTILE IRON	
Model Code	List Price	Model Code	List Price
BK2		BK2/S	

Reducing/Relieving Valves



FUNCTION

On B Tank to T
Drained to T
Reverse FF Check



ALUMINUM		DUCTILE IRON	
Model Code	List Price	Model Code	List Price
BKJ		BKJ/S	

07 REDUCING/RELIEVING

TYPICAL CARTRIDGES USED WITH BODIES SHOWN ABOVE

	Pilot Operated Reducing/Relieving Valve		
	PPHB Page 3.11		
	Air Controlled, Pilot Operated Reducing/Relieving Valve		
	PPHC Page 3.13		
OTHER VALVES:			

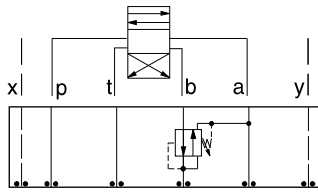


ISO 07 SANDWICH BODIES



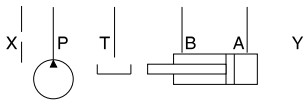
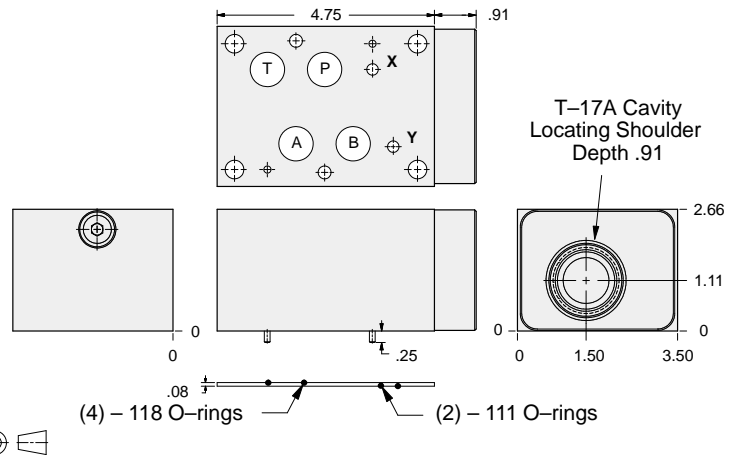
- Aluminum rated to 3000 psi and Ductile Iron rated to 5000 psi.
- See page viii for ordering cartridge/body and seals. Pressure ratings, material specifications on page xiv.

Reducing/Relieving Valves



FUNCTION

On B Tank to A
Drained to A



ALUMINUM		DUCTILE IRON	
Model Code	List Price	Model Code	List Price
BKB		BKB/S	

07 REDUCING/RELIEVING

TYPICAL CARTRIDGES USED WITH BODIES SHOWN ABOVE			
	Pilot Operated Reducing/Relieving Valve		
	PPHB Page 3.11		
OTHER VALVES:			

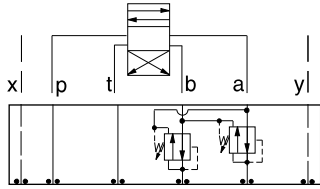


ISO 07 SANDWICH BODIES



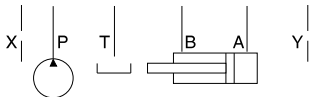
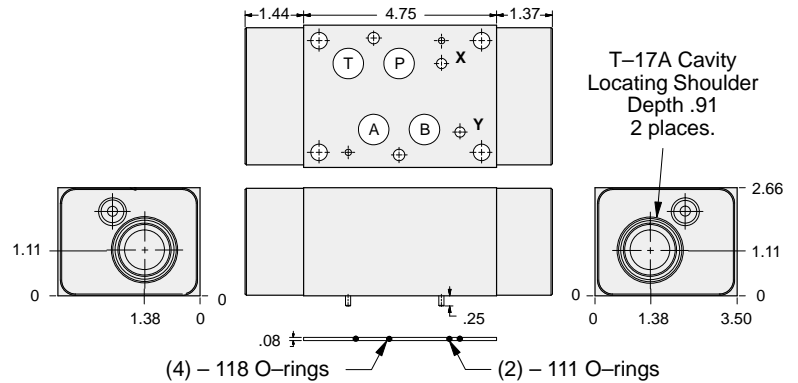
- Aluminum rated to 3000 psi and Ductile Iron rated to 5000 psi.
- See page viii for ordering cartridge/body and seals. Pressure ratings, material specifications on page xiv.

Reducing/Relieving Valves



FUNCTION

On **A** and **B**
Tanks and Drains to
Opposite Port



ALUMINUM		DUCTILE IRON	
Model Code	List Price	Model Code	List Price
BKY		BKY/S	

07 REDUCING/RELIEVING

TYPICAL CARTRIDGES USED WITH BODIES SHOWN ABOVE			
	Pilot Operated Reducing/Relieving Valve		
	PPHB Page 3.11		
OTHER VALVES:			