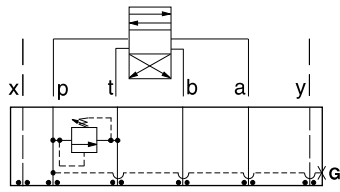




ISO 07 SANDWICH BODIES



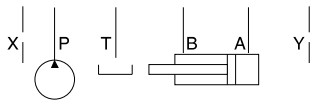
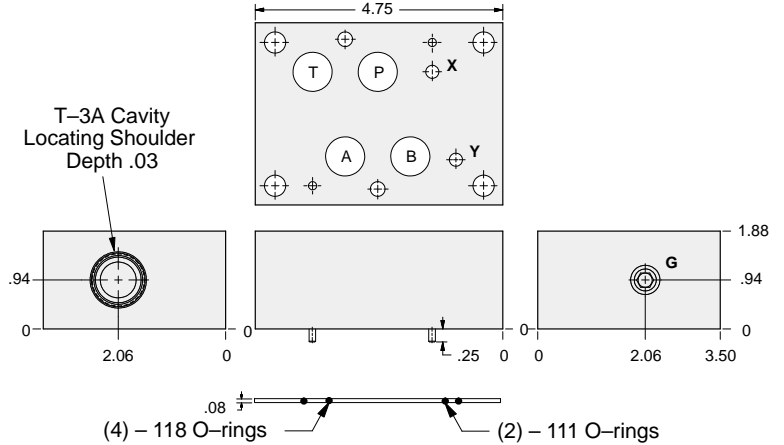
- Aluminum rated to 3000 psi and Ductile Iron rated to 5000 psi.
- See page viii for ordering cartridge/body and seals. Pressure ratings, material specifications on page xiv.



FUNCTION

P to T

Relief Valves



Gage Port (Plugged)	ALUMINUM		DUCTILE IRON	
	Model Code	List Price	Model Code	List Price
.25 NPTF	CKP		CKP/S	
.25 BSPP	CKP/M		CKP/T	

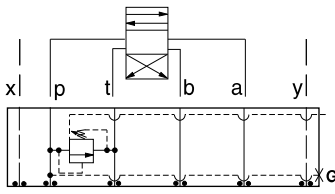
TYPICAL CARTRIDGES USED WITH BODIES SHOWN ABOVE			
	Pilot Operated Relief Valve		Pilot Operated "Kick-Down" Relief Valve
	RPGC Page 1.06		RQGB Page 1.12
	Pilot Operated, Rapid Response Relief Valve		Air Controlled, Pilot Operated Relief Valve
	RPGE Page 1.08		RPGD Page 1.14
	Direct Acting Relief Valve		
	RDFA Page 1.10		
OTHER VALVES:			



ISO 07 SANDWICH BODIES



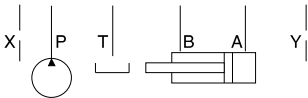
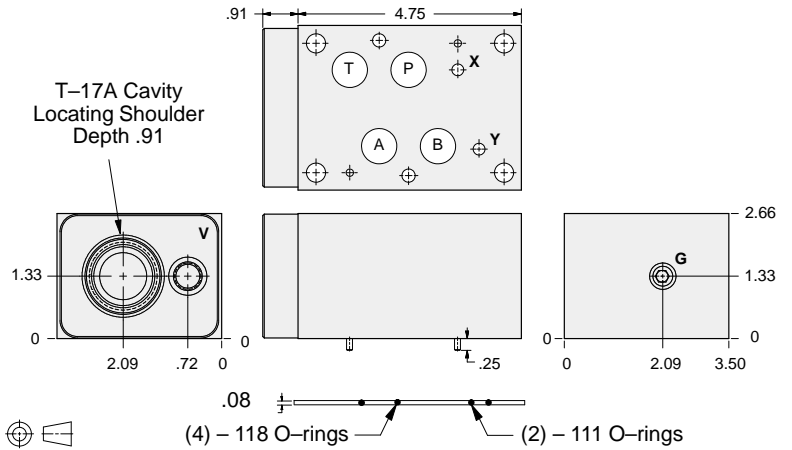
- Aluminum rated to 3000 psi and Ductile Iron rated to 5000 psi.
- See page viii for ordering cartridge/body and seals. Pressure ratings, material specifications on page xiv.



FUNCTION

P to T
Externally Vented

Relief Valves



Vent Port	Gage Port (Plugged)	ALUMINUM		DUCTILE IRON	
		Model Code	List Price	Model Code	List Price
SAE-6	.25 NPTF	CKQ		CKQ/S	
.25 BSPP	.25 BSPP	CKQ/M		CKQ/T	

07 RELIEF

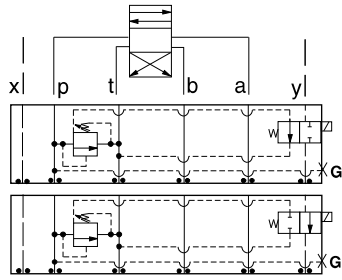
TYPICAL CARTRIDGES USED WITH BODIES SHOWN ABOVE			
	<i>Pilot Operated Vented Relief Valve</i>		
	RVGA Page 1.19		
OTHER VALVES:			



ISO 07 SANDWICH BODIES



- Aluminum rated to 3000 psi and Ductile Iron rated to 5000 psi.
- See page viii for ordering cartridge/body and seals. Pressure ratings, material specifications on page xiv.

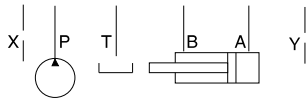
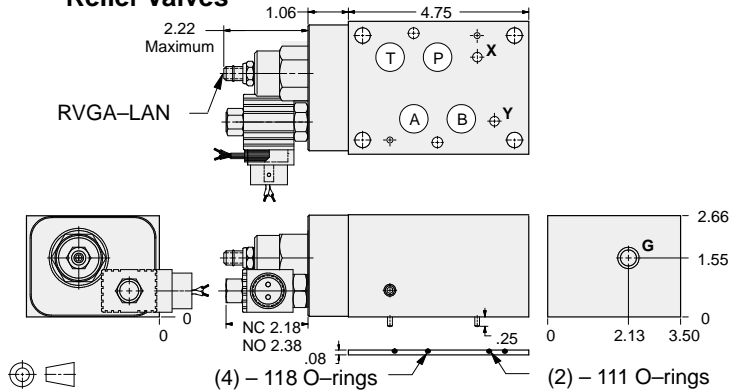


FUNCTION

P to T
N.O. Solenoid
Vented *

P to T
N.C. Solenoid
Vented *

Relief Valves



Solenoid Type	Gage Port (Plugged)	ALUMINUM		DUCTILE IRON	
		Model Code	List Price	Model Code	List Price
N.O.	.25 NPTF	YRFI-LAN-*B		YRFI-LAN-*B/S	
N.O.	.25 BSPP	YRFI-LAN-*B/M		YRFI-LAN-*B/T	
N.C.	.25 NPTF	YRFJ-LAN-*B		YRFJ-LAN-*B/S	
N.C.	.25 BSPP	YRFJ-LAN-*B/M		YRFJ-LAN-*B/T	

* Select solenoid connection/voltage option from page 14.16 and add option price to List Price.

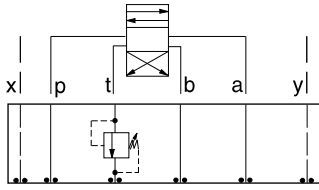


ISO 07 SANDWICH BODIES



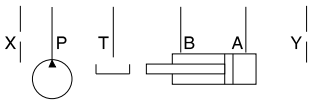
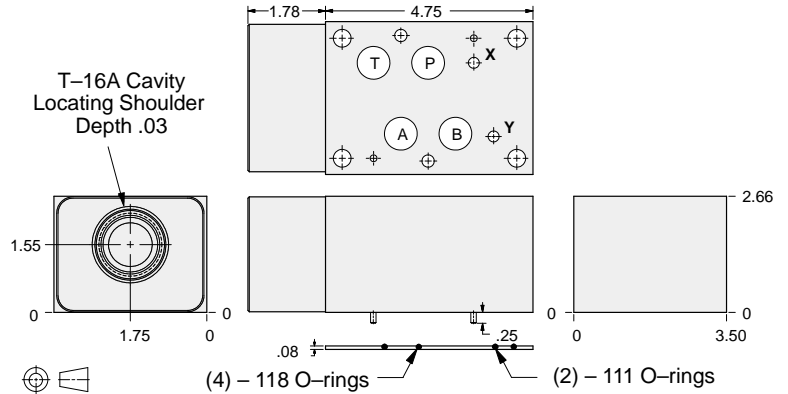
- Aluminum rated to 3000 psi and Ductile Iron rated to 5000 psi.
- See page viii for ordering cartridge/body and seals. Pressure ratings, material specifications on page xiv.

Relief Valves



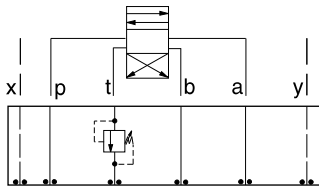
FUNCTION

Out of T



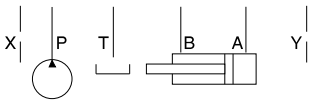
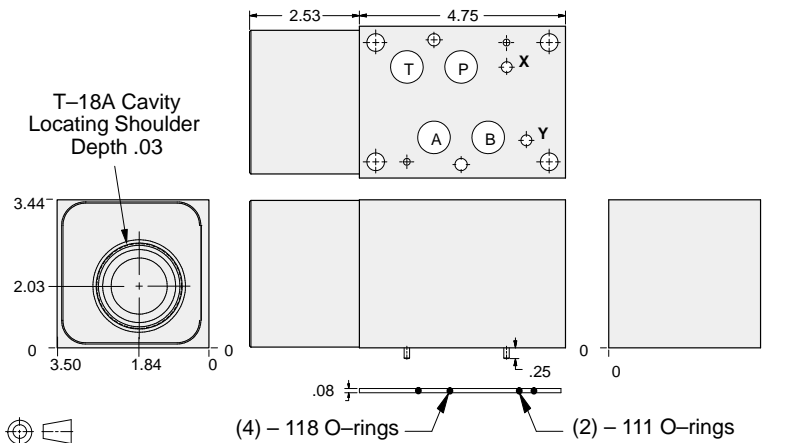
ALUMINUM		DUCTILE IRON	
Model Code	List Price	Model Code	List Price
DKT		DKT/S	

Relief Valves



FUNCTION

Out of T
(High Capacity)



ALUMINUM		DUCTILE IRON	
Model Code	List Price	Model Code	List Price
DKV		DKV/S	

TYPICAL CARTRIDGES USED WITH BODIES SHOWN ABOVE

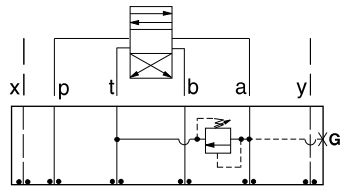
	Pilot Operated Relief Valve RP*C Page 1.07		Pilot Operated "Kick-Down" Relief Valve RQ*B Page 1.13
	Pilot Operated, Rapid Response Relief Valve RP*E Page 1.09		Air Controlled, Pilot Operated Relief Valve RP*D Page 1.15
	Direct Acting Relief Valve RD*A Page 1.11		
OTHER VALVES:			



ISO 07 SANDWICH BODIES

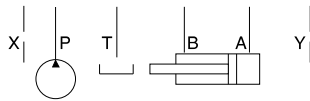
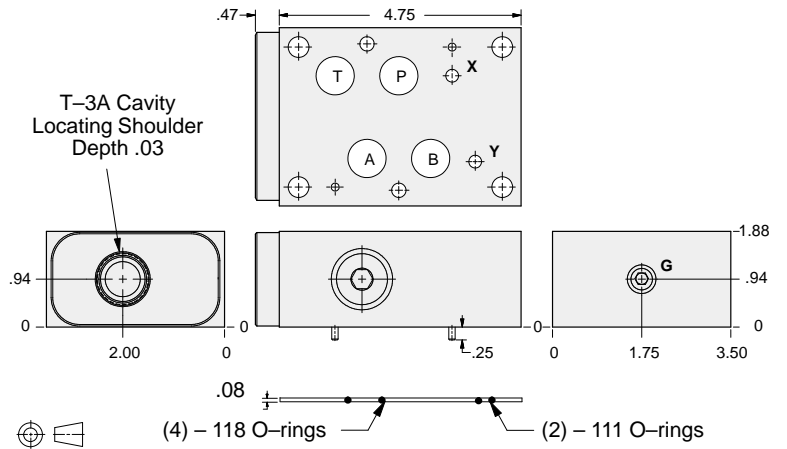


- Aluminum rated to 3000 psi and Ductile Iron rated to 5000 psi.
- See page viii for ordering cartridge/body and seals. Pressure ratings, material specifications on page xiv.



FUNCTION
A to T

Relief Valves



Gage Port (Plugged)	ALUMINUM		DUCTILE IRON	
	Model Code	List Price	Model Code	List Price
.25 NPTF	CKA		CKA/S	
.25 BSPP	CKA/M		CKA/T	

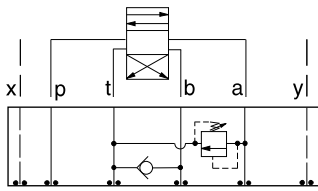
TYPICAL CARTRIDGES USED WITH BODIES SHOWN ABOVE			
	Pilot Operated Relief Valve RPGC Page 1.06		Pilot Operated "Kick-Down" Relief Valve RQGB Page 1.12
	Pilot Operated, Rapid Response Relief Valve RPGE Page 1.08		Air Controlled, Pilot Operated Relief Valve RPGD Page 1.14
	Direct Acting Relief Valve RDFA Page 1.10		
OTHER VALVES:			



ISO 07 SANDWICH BODIES



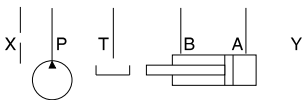
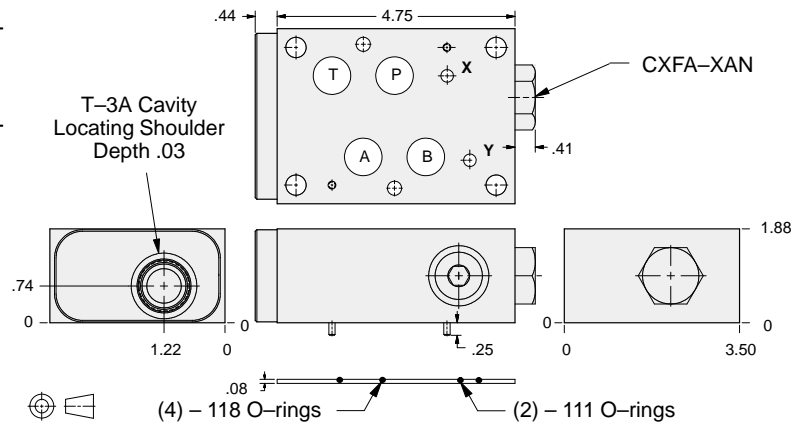
- Aluminum rated to 3000 psi and Ductile Iron rated to 5000 psi.
- See page viii for ordering cartridge/body and seals. Pressure ratings, material specifications on page xiv.



FUNCTION

A to T
FF Check T to B

Relief Valves



ALUMINUM		DUCTILE IRON	
Model Code	List Price	Model Code	List Price
CKJ		CKJ/S	

07 RELIEF

TYPICAL CARTRIDGES USED WITH BODIES SHOWN ABOVE

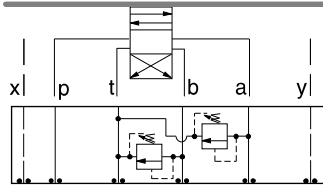
	<i>Pilot Operated Relief Valve</i> RPGC Page 1.06		<i>Pilot Operated "Kick-Down" Relief Valve</i> RQGB Page 1.12
	<i>Pilot Operated, Rapid Response Relief Valve</i> RPGE Page 1.08		<i>Air Controlled, Pilot Operated Relief Valve</i> RPGD Page 1.14
	<i>Direct Acting Relief Valve</i> RDFA Page 1.10		
OTHER VALVES:			



ISO 07 SANDWICH BODIES



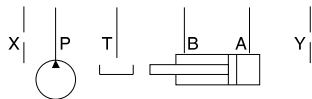
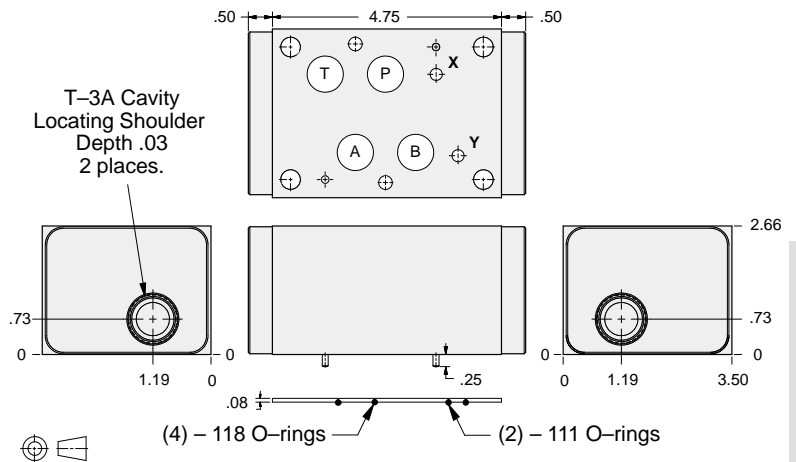
- Aluminum rated to 3000 psi and Ductile Iron rated to 5000 psi.
- See page viii for ordering cartridge/body and seals. Pressure ratings, material specifications on page xiv.



FUNCTION

A and B to T
(High Capacity)

Relief Valves



ALUMINUM		DUCTILE IRON	
Model Code	List Price	Model Code	List Price
CKX		CKX/S	

TYPICAL CARTRIDGES USED WITH BODIES SHOWN ABOVE

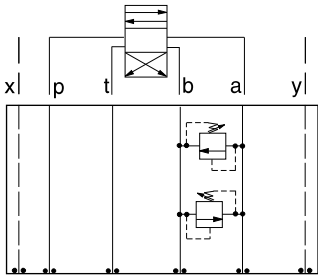
	<i>Pilot Operated Relief Valve</i> RPGC Page 1.06		<i>Pilot Operated "Kick-Down" Relief Valve</i> RQGB Page 1.12
	<i>Pilot Operated, Rapid Response Relief Valve</i> RPGE Page 1.08		<i>Air Controlled, Pilot Operated Relief Valve</i> RPGD Page 1.14
	<i>Direct Acting Relief Valve</i> RDFA Page 1.10		
OTHER VALVES:			



ISO 07 SANDWICH BODIES



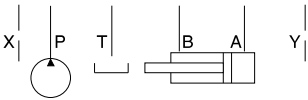
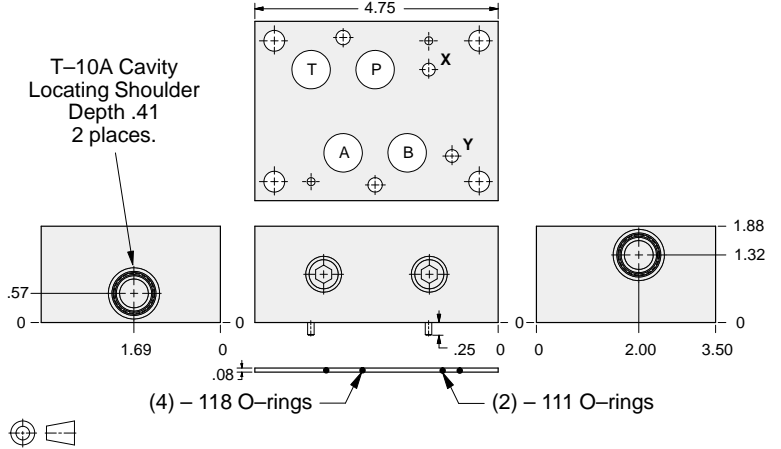
- Aluminum rated to 3000 psi and Ductile Iron rated to 5000 psi.
- See page viii for ordering cartridge/body and seals. Pressure ratings, material specifications on page xiv.



FUNCTION

A to B and B to A
(Cross-Port)

Relief Valves



ALUMINUM		DUCTILE IRON	
<i>Model Code</i>	<i>List Price</i>	<i>Model Code</i>	<i>List Price</i>
CKY		CKY/S	

07 RELIEF

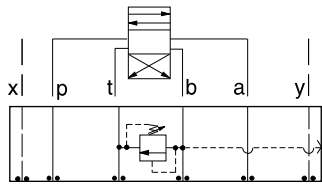
TYPICAL CARTRIDGES USED WITH BODIES SHOWN ABOVE			
	<i>Pilot Operated Relief Valve</i>		<i>Pilot Operated "Kick-Down" Relief Valve</i>
	RPEC Page 1.06		RQEB Page 1.12
	<i>Pilot Operated, Rapid Response Relief Valve</i>		
	RPEE Page 1.08		
	<i>Direct Acting Relief Valve</i>		
	RDDA Page 1.10		
OTHER VALVES:			



ISO 07 SANDWICH BODIES

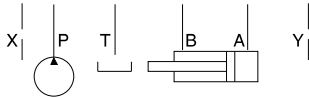
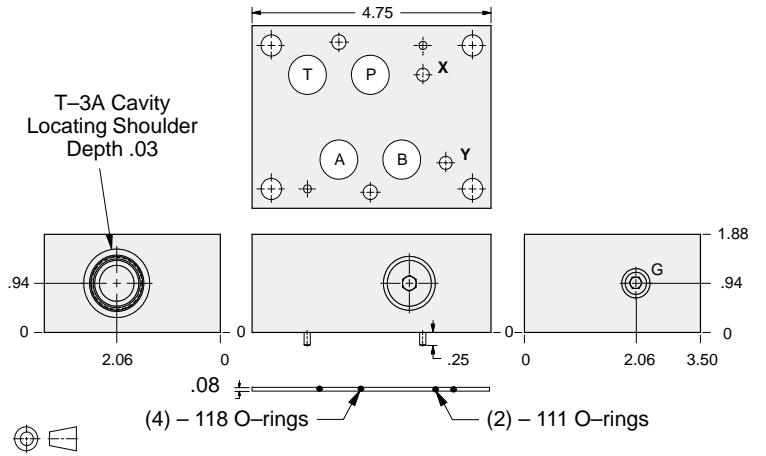


- Aluminum rated to 3000 psi and Ductile Iron rated to 5000 psi.
- See page viii for ordering cartridge/body and seals. Pressure ratings, material specifications on page xiv.



FUNCTION
B to T

Relief Valves



Gage Port (Plugged)	ALUMINUM		DUCTILE IRON	
	Model Code	List Price	Model Code	List Price
.25 NPTF	CKB		CKB/S	
.25 BSPP	CKB/M		CKB/T	

TYPICAL CARTRIDGES USED WITH BODIES SHOWN ABOVE			
	Pilot Operated Relief Valve RPGC Page 1.06		Pilot Operated "Kick-Down" Relief Valve RQGB Page 1.12
	Pilot Operated, Rapid Response Relief Valve RPGE Page 1.08		Air Controlled, Pilot Operated Relief Valve RPGD Page 1.14
	Direct Acting Relief Valve RDFA Page 1.10		
OTHER VALVES:			