

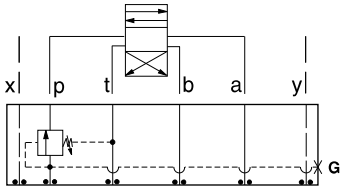


ISO 07 SANDWICH BODIES

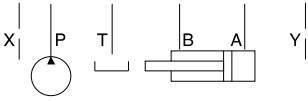
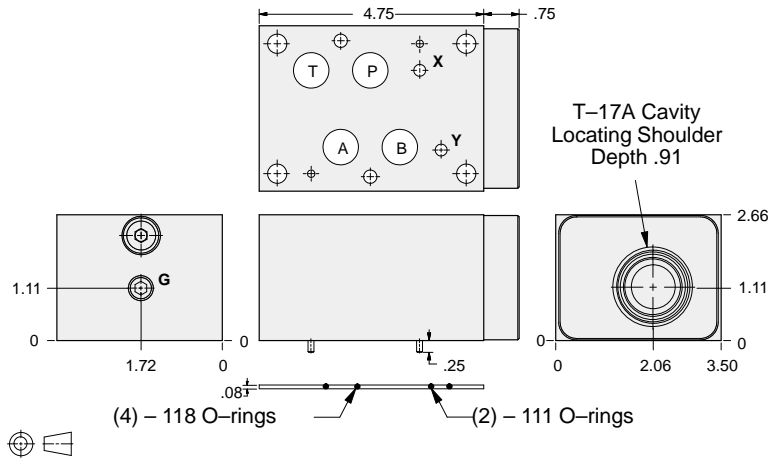


- Aluminum rated to 3000 psi and Ductile Iron rated to 5000 psi.
- See page viii for ordering cartridge/body and seals. Pressure ratings, material specifications on page xiv.

Sequence Valves



FUNCTION
In to P



Gage Port (Plugged)	ALUMINUM		DUCTILE IRON	
	Model Code	List Price	Model Code	List Price
.25 NPTF	BKW		BKW/S	
.25 BSPP	BKW/M		BKW/T	

07 SEQUENCE

TYPICAL CARTRIDGES USED WITH BODIES SHOWN ABOVE

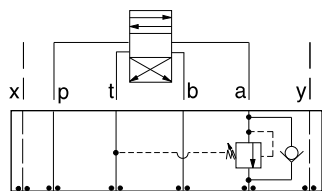
	<i>Pilot Operated Sequence Valve</i>		
	RSHC Page 2.07		
	<i>Pilot Operated "Kick-Down" Sequence Valve</i>		
	SQHB Page 2.09		
	<i>Air Controlled, Pilot Operated Sequence Valve</i>		
	RSHE Page 2.11		
OTHER VALVES:			



ISO 07 SANDWICH BODIES



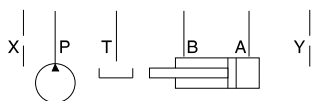
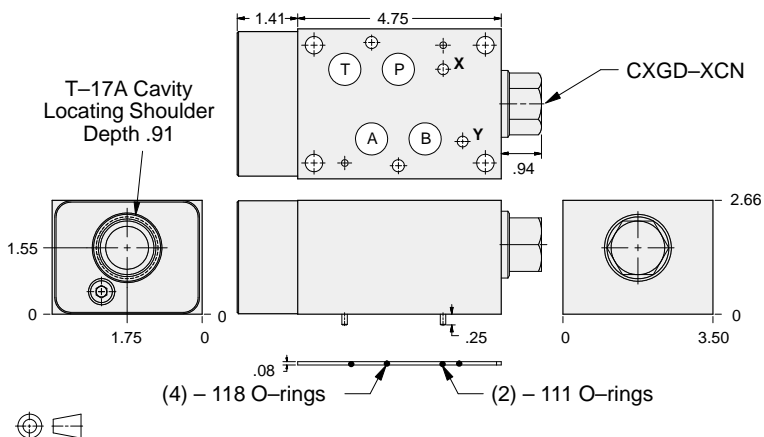
- Aluminum rated to 3000 psi and Ductile Iron rated to 5000 psi.
- See page viii for ordering cartridge/body and seals. Pressure ratings, material specifications on page xiv.



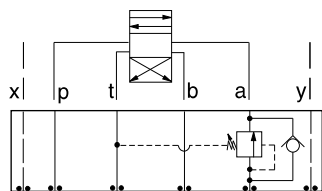
FUNCTION

In to A
Reverse FF Check

Sequence Valves



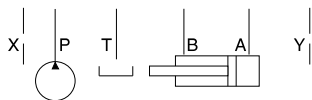
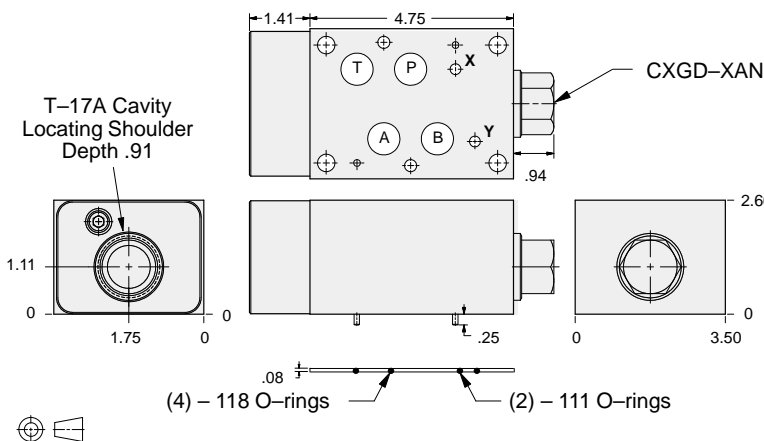
ALUMINUM		DUCTILE IRON	
Model Code	List Price	Model Code	List Price
BK4		BK4/S	



FUNCTION

Out of A
Reverse FF Check

Sequence Valves



ALUMINUM		DUCTILE IRON	
Model Code	List Price	Model Code	List Price
BK6		BK6/S	

TYPICAL CARTRIDGES USED WITH BODIES SHOWN ABOVE

	Pilot Operated Sequence Valve		
	RSHC Page 2.07		
	Pilot Operated "Kick-Down" Sequence Valve		
	SQHB Page 2.09		
	Air Controlled, Pilot Operated Sequence Valve		
	RSHE Page 2.11		
OTHER VALVES:			

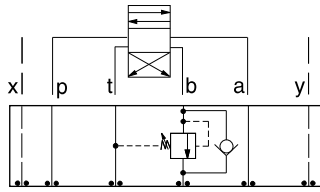
07 SEQUENCE



ISO 07 SANDWICH BODIES



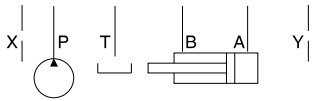
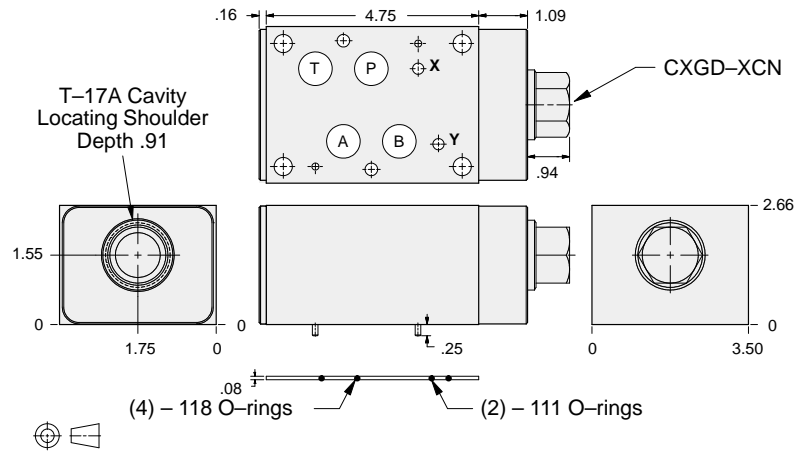
- Aluminum rated to 3000 psi and Ductile Iron rated to 5000 psi.
- See page viii for ordering cartridge/body and seals. Pressure ratings, material specifications on page xiv.



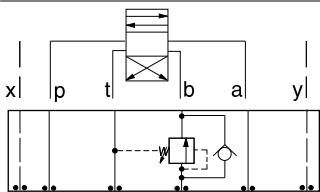
FUNCTION

In to B
Reverse FF Check

Sequence Valves



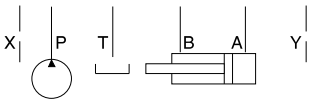
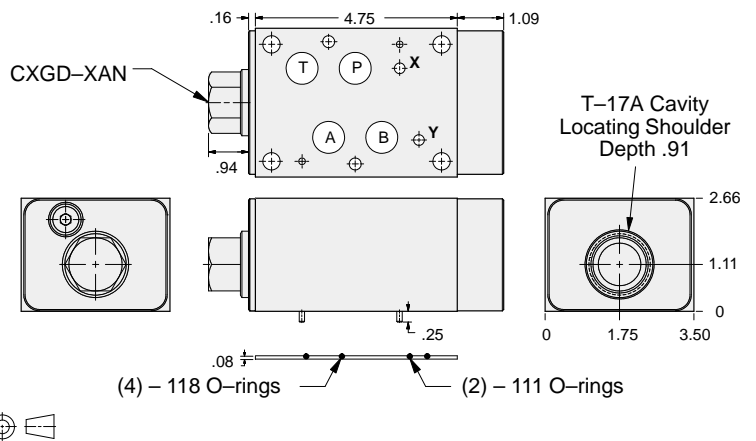
ALUMINUM		DUCTILE IRON	
Model Code	List Price	Model Code	List Price
BK5		BK5/S	



FUNCTION

Out of B
Reverse FF Check

Sequence Valves



ALUMINUM		DUCTILE IRON	
Model Code	List Price	Model Code	List Price
BK7		BK7/S	

07 REDUCING

TYPICAL CARTRIDGES USED WITH BODIES SHOWN ABOVE

	Pilot Operated Sequence Valve		
	RSHC Page 2.07		
	Pilot Operated "Kick-Down" Sequence Valve		
	SQHB Page 2.09		
	Air Controlled, Pilot Operated Sequence Valve		
	RSHE Page 2.11		
OTHER VALVES:			