

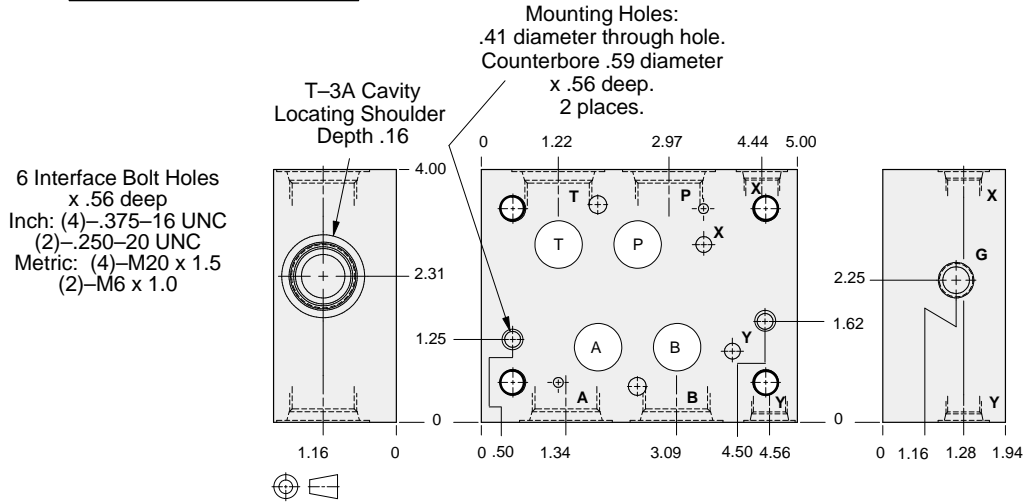
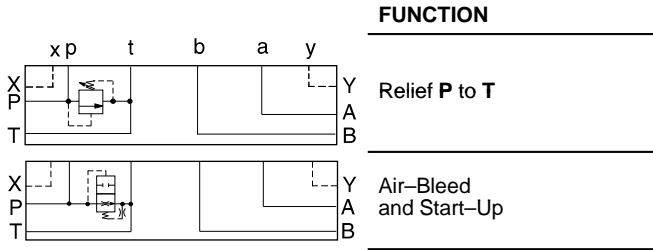


ISO 07 SANDWICH BODIES



- Aluminum rated to 3000 psi and Ductile Iron rated to 5000 psi.
- See page viii for ordering cartridge/body and seals. Pressure ratings, material specifications on page xiv.

Side Ported Subplates



Bolt Hole Interface	Gage Port (Plugged)	Port P,T,A,B	Port X,Y	ALUMINUM		DUCTILE IRON	
				Model Code	List Price	Model Code	List Price
Inch	.25 NPTF	.75 NPTF	.25 NFPT	ZLW		ZLW/S	
Inch	.25 NPTF	SAE-12	SAE-6	ZLX		ZLX/S	
Metric	.25 BSPP	.75 BSPP	.25 BSPP	ZLZ		ZLZ/S	

07 SUBPLATE

TYPICAL CARTRIDGES USED WITH BODIES SHOWN ABOVE			
	Pilot Operated Relief Valve RPGC Page 1.06		Pilot Operated "Kick-Down" Relief Valve RQGB Page 1.12
	Pilot Operated, Rapid Response Relief Valve RPGE Page 1.08		Air Controlled, Pilot Operated Relief Valve RPGD Page 1.14
	Direct Acting Relief Valve RDFA Page 1.10		Air Bleed and Start-up Valve NQEB Page 10.16
OTHER VALVES:			