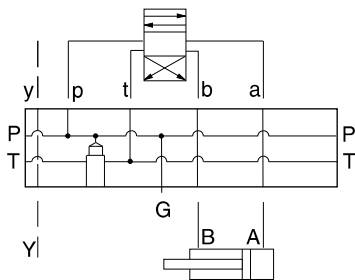




BAR MANIFOLDS



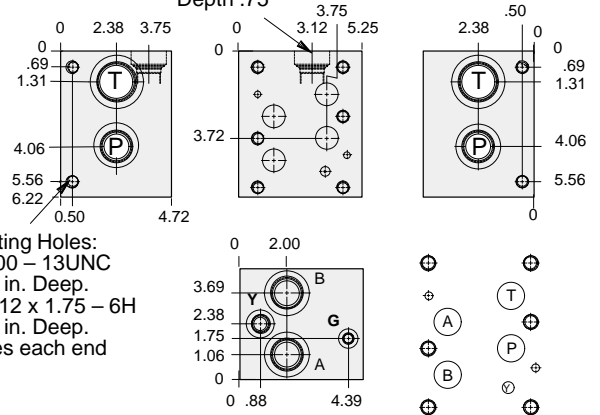
- Aluminum rated to 3000 psi and Ductile Iron rated to 5000 psi.
- See page viii for ordering cartridge/body and seals. Pressure ratings, material specifications on page xiv.



ISO 08 Parallel Circuit with Relief Cavity and Y Port

FUNCTION _____
 One Station _____

T-3A Cavity
 Locating Shoulder
 Depth .75



Mounting Holes:
 Inch: 500 – 13UNC
 x .88 in. Deep.
 Metric: M12 x 1.75 – 6H
 x .88 in. Deep.
 2 places each end



Mounting Holes	Port T	Ports A, B, P	Port Y	Gage Port	ALUMINUM		DUCTILE IRON	
					Model Code	List Price	Model Code	List Price
inch	1.25 NPTF	1.00 NPTF	.375 NPTF	.25 NPTF	VLN		VLN/S	
inch	SAE-20	SAE-16	SAE-8	SAE-4	VLT		VLT/S	
metric	1.25 BSPP	1.00 BSPP	.375 BSPP	.25 BSPP	VLX		VLX/S	

Bar Manifold Mounting Kits to be ordered separately. See page 12.087.

TYPICAL CARTRIDGES USED WITH BODIES SHOWN ABOVE

	Pilot Operated Relief Valve		Direct Acting Relief Valve
	RPGC Page 1.06		RDFA Page 1.10
OTHER VALVES:			

BAR MANIFOLDS

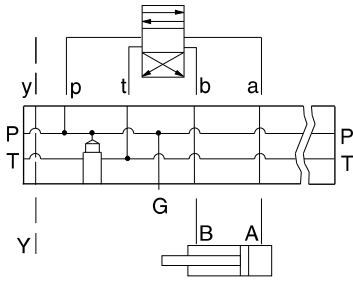


BAR MANIFOLDS



- Aluminum rated to 3000 psi and Ductile Iron rated to 5000 psi.
- See page viii for ordering cartridge/body and seals. Pressure ratings, material specifications on page xiv.

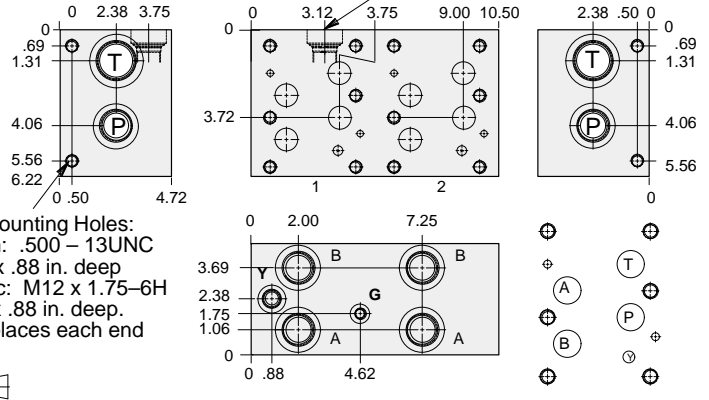
ISO 08 Parallel Circuit with Relief Cavity and Y Port



FUNCTION

Two Station

T-3A Cavity
Locating Shoulder
Depth .75



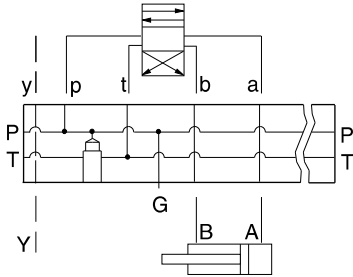
Mounting Holes:
Inch: .500 – 13UNC
x .88 in. deep
Metric: M12 x 1.75–6H
x .88 in. deep.
2 places each end



Mounting Holes	Port T	Ports A, B, P	Port Y	Gage Port	ALUMINUM		DUCTILE IRON	
					Model Code	List Price	Model Code	List Price
inch	1.25 NPTF	1.00 NPTF	.375 NPTF	.25 NPTF	VLP		VLP/S	
inch	SAE-20	SAE-16	SAE-8	SAE-4	VLV		VLV/S	
metric	1.25 BSPP	1.00 BSPP	.375 BSPP	.25 BSPP	VLY		VLY/S	

Bar Manifold Mounting Kits to be ordered separately. See page 12.087.

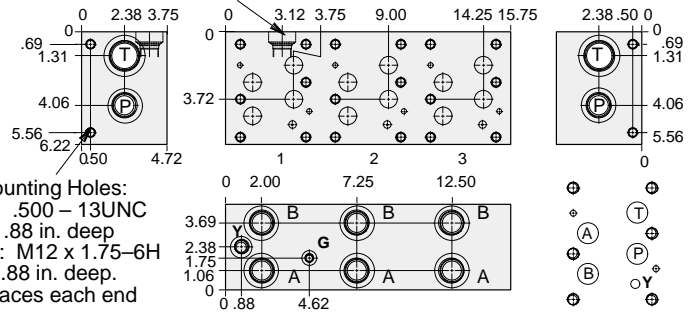
ISO 08 Parallel Circuit with Relief Cavity and Y Port



FUNCTION

Three Station

T-3A Cavity
Locating Shoulder
Depth .75



Mounting Holes:
Inch: .500 – 13UNC
x .88 in. deep
Metric: M12 x 1.75–6H
x .88 in. deep.
2 places each end



Mounting Holes	Port T	Ports A, B, P	Port Y	Gage Port	ALUMINUM		DUCTILE IRON	
					Model Code	List Price	Model Code	List Price
inch	1.25 NPTF	1.00 NPTF	.375 NPTF	.25 NPTF	VLR		VLR/S	
inch	SAE-20	SAE-16	SAE-8	SAE-4	VLW		VLW/S	
metric	1.25 BSPP	1.00 BSPP	.375 BSPP	.25 BSPP	VLZ		VLZ/S	

Bar Manifold Mounting Kits to be ordered separately. See page 12.087.

TYPICAL CARTRIDGES USED WITH BODIES SHOWN ABOVE

	Pilot Operated Relief Valve		Direct Acting Relief Valve
	RPGC Page 1.06		RDFA Page 1.10
OTHER VALVES:			

BAR MANIFOLDS