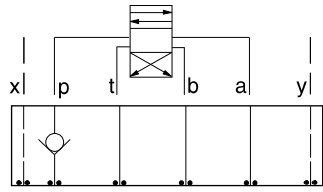




ISO 08 SANDWICH BODIES

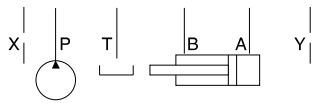
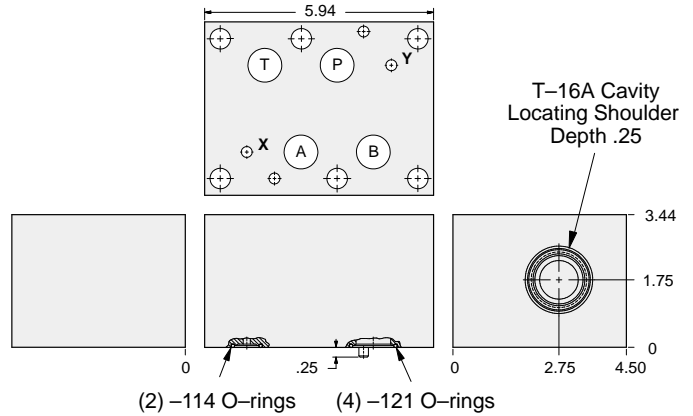


- Aluminum rated to 3000 psi and Ductile Iron rated to 5000 psi.
- See page viii for ordering cartridge/body and seals. Pressure ratings, material specifications on page xiv.

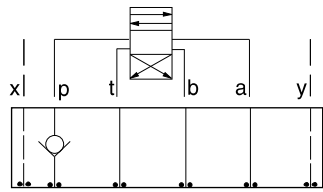


FUNCTION
On P

Check Valves

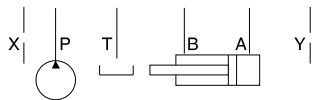
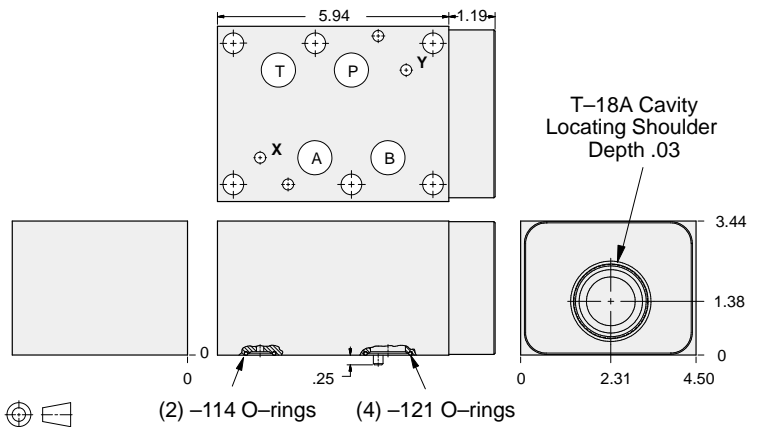


ALUMINUM		DUCTILE IRON	
Model Code	List Price	Model Code	List Price
IBP		IBP/S	



FUNCTION
On P
(High Capacity)

Check Valves



ALUMINUM		DUCTILE IRON	
Model Code	List Price	Model Code	List Price
IBO		IBO/S	

TYPICAL CARTRIDGES USED WITH BODIES SHOWN ABOVE			
	Check Valve, Free Flow Port 1 to Port 2 (Nose-to-Side)		
	CX*A Page 5.09		
OTHER VALVES:			

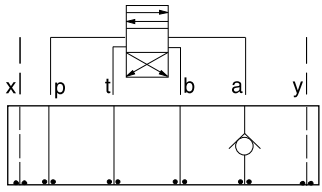
08 CHECK



ISO 08 SANDWICH BODIES



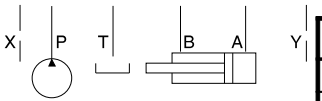
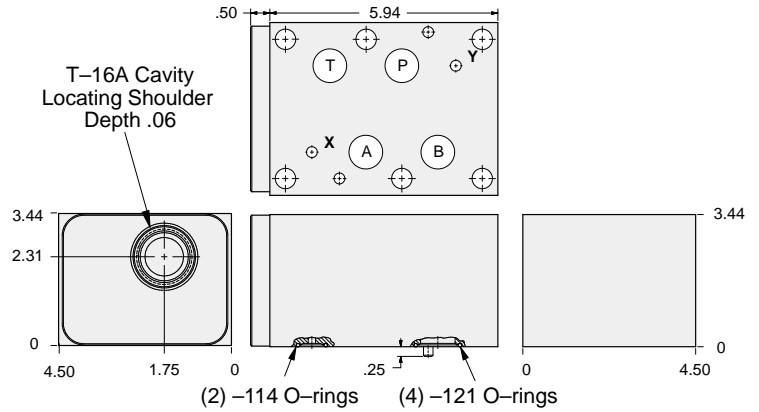
- Aluminum rated to 3000 psi and Ductile Iron rated to 5000 psi.
- See page viii for ordering cartridge/body and seals. Pressure ratings, material specifications on page xiv.



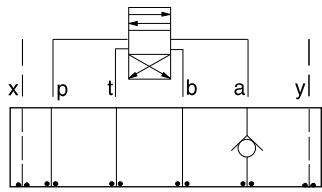
FUNCTION

On A
Free Flow Out
of Valve

Check Valves



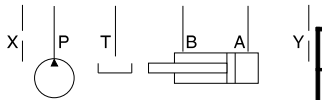
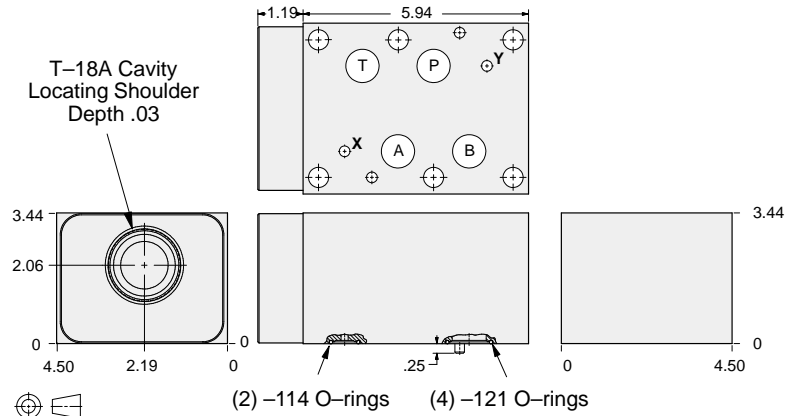
ALUMINUM		DUCTILE IRON	
Model Code	List Price	Model Code	List Price
IBC		IBC/S	



FUNCTION

On A
Free Flow Out
of Valve (High Capacity)

Check Valves



ALUMINUM		DUCTILE IRON	
Model Code	List Price	Model Code	List Price
IBG		IBG/S	

TYPICAL CARTRIDGES USED WITH BODIES SHOWN ABOVE

	Check Valve, Free Flow Port 1 to Port 2 (Nose-to-Side)		
	CX*A Page 5.09		
OTHER VALVES:			

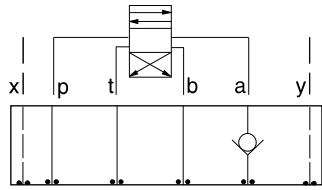
08 CHECK



ISO 08 SANDWICH BODIES



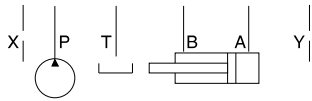
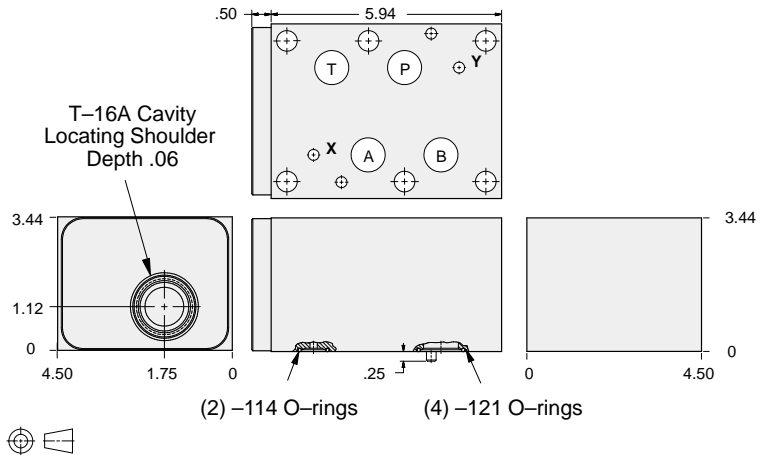
- Aluminum rated to 3000 psi and Ductile Iron rated to 5000 psi.
- See page viii for ordering cartridge/body and seals. Pressure ratings, material specifications on page xiv.



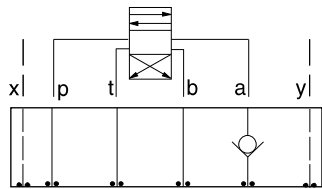
FUNCTION

On A
Free Flow Into Valve

Check Valves



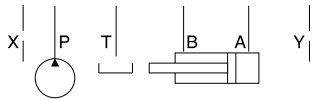
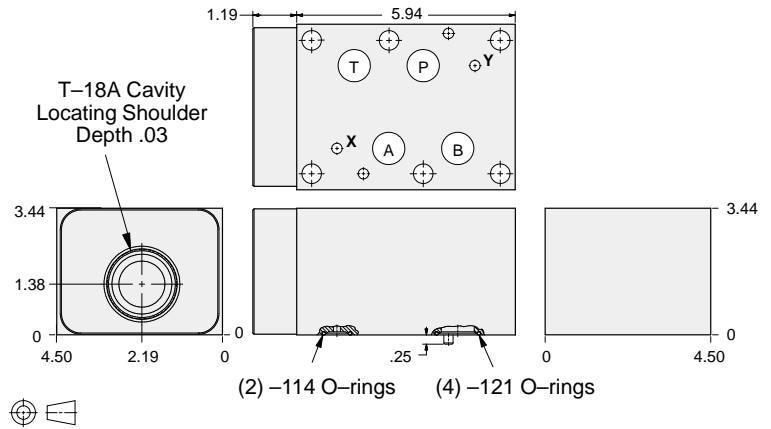
ALUMINUM		DUCTILE IRON	
Model Code	List Price	Model Code	List Price
IBA		IBA/S	



FUNCTION

On A
Free Flow Into Valve
(High Capacity)

Check Valves



ALUMINUM		DUCTILE IRON	
Model Code	List Price	Model Code	List Price
IBE		IBE/S	

TYPICAL CARTRIDGES USED WITH BODIES SHOWN ABOVE			
	Check Valve, Free Flow Port 1 to Port 2 (Nose-to-Side)		
	CX*A Page 5.09		
OTHER VALVES:			

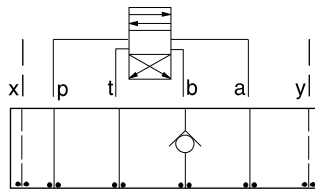
08 CHECK



ISO 08 SANDWICH BODIES



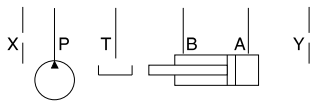
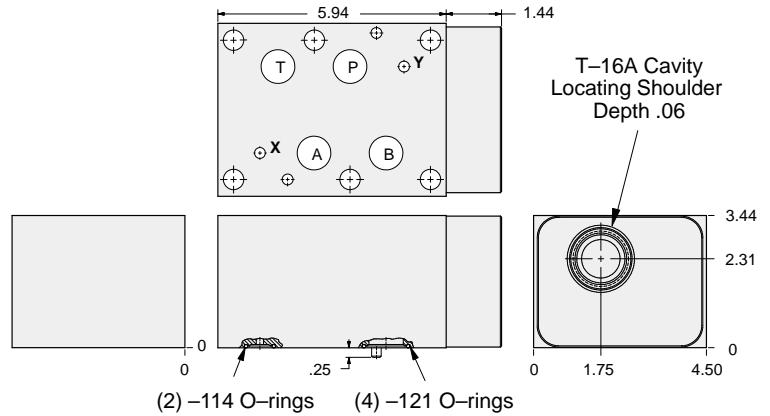
- Aluminum rated to 3000 psi and Ductile Iron rated to 5000 psi.
- See page viii for ordering cartridge/body and seals. Pressure ratings, material specifications on page xiv.



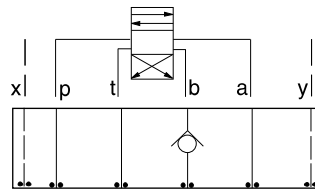
FUNCTION

On B
Free Flow Out
of Valve

Check Valves



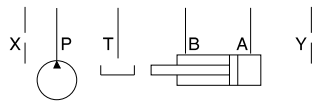
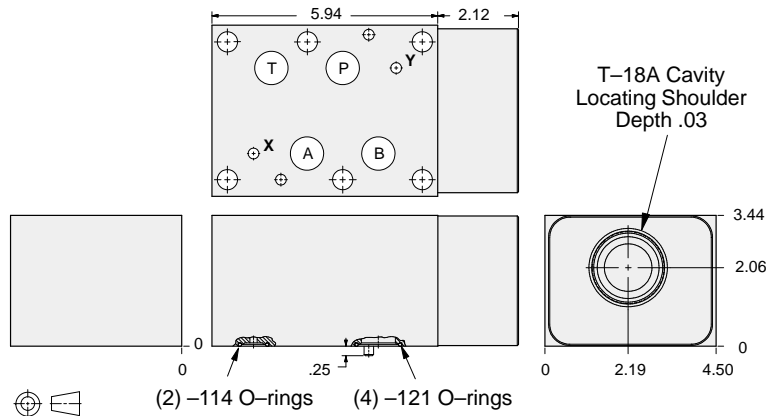
ALUMINUM		DUCTILE IRON	
Model Code	List Price	Model Code	List Price
IBD		IBD/S	



FUNCTION

On B
Free Flow Out
of Valve (High Capacity)

Check Valves



ALUMINUM		DUCTILE IRON	
Model Code	List Price	Model Code	List Price
IBH		IBH/S	

TYPICAL CARTRIDGES USED WITH BODIES SHOWN ABOVE

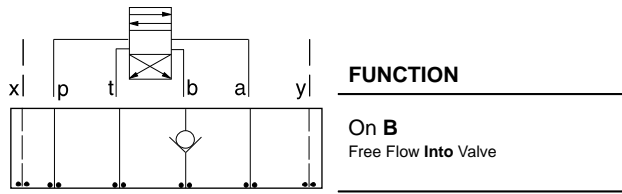
	Check Valve, Free Flow Port 1 to Port 2 (Nose-to-Side)		
	CX*A Page 5.09		
OTHER VALVES:			



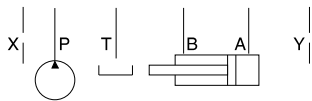
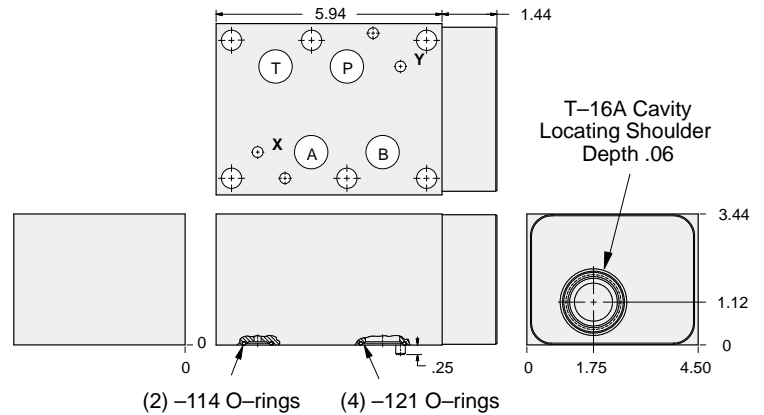
ISO 08 SANDWICH BODIES



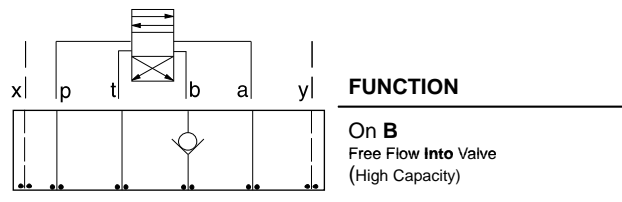
- Aluminum rated to 3000 psi and Ductile Iron rated to 5000 psi.
- See page viii for ordering cartridge/body and seals. Pressure ratings, material specifications on page xiv.



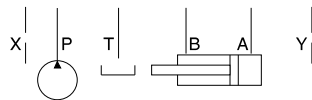
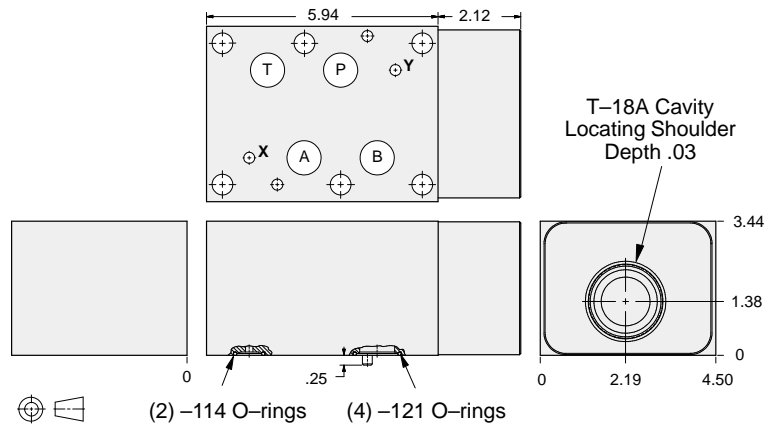
Check Valves



ALUMINUM		DUCTILE IRON	
Model Code	List Price	Model Code	List Price
IBB		IBB/S	



Check Valves



ALUMINUM		DUCTILE IRON	
Model Code	List Price	Model Code	List Price
IBF		IBF/S	

TYPICAL CARTRIDGES USED WITH BODIES SHOWN ABOVE			
	Check Valve, Free Flow Port 1 to Port 2 (Nose-to-Side)		
	CX*A Page 5.09		
OTHER VALVES:			

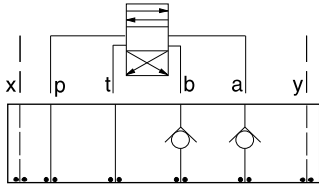
08 CHECK



ISO 08 SANDWICH BODIES



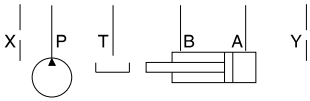
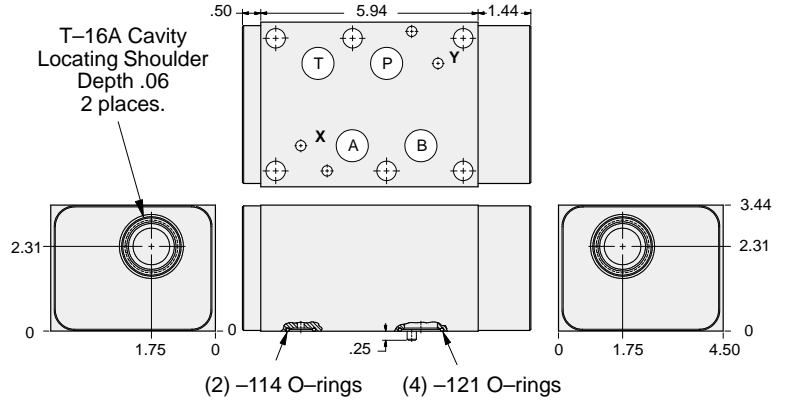
- Aluminum rated to 3000 psi and Ductile Iron rated to 5000 psi.
- See page viii for ordering cartridge/body and seals. Pressure ratings, material specifications on page xiv.



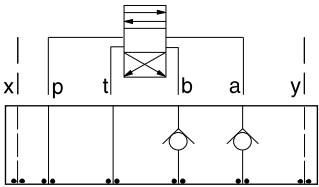
FUNCTION

On **A** and **B**
Free Flow Out
of Valve

Check Valves



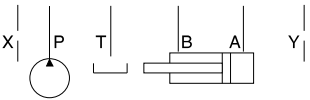
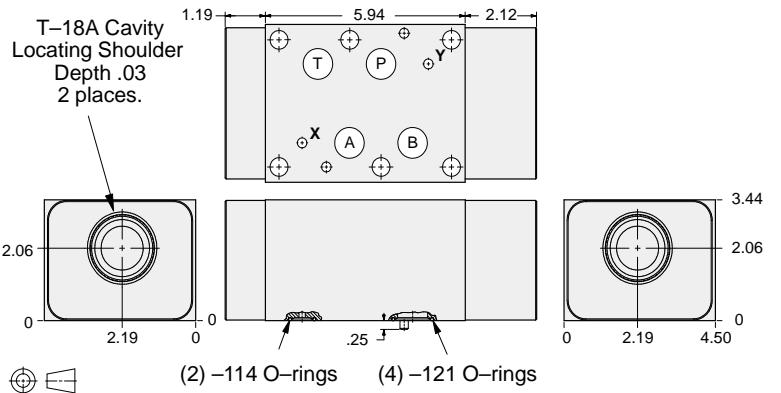
ALUMINUM		DUCTILE IRON	
Model Code	List Price	Model Code	List Price
IBX		IBX/S	



FUNCTION

On **A** and **B**
Free Flow Out
of Valve (High Capacity)

Check Valves



ALUMINUM		DUCTILE IRON	
Model Code	List Price	Model Code	List Price
IBZ		IBZ/S	

TYPICAL CARTRIDGES USED WITH BODIES SHOWN ABOVE

	Check Valve, Free Flow Port 1 to Port 2 (Nose-to-Side)		
	CX*A Page 5.09		
OTHER VALVES:			

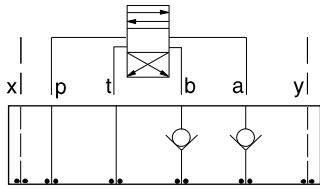
08 CHECK



ISO 08 SANDWICH BODIES



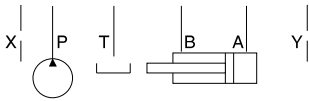
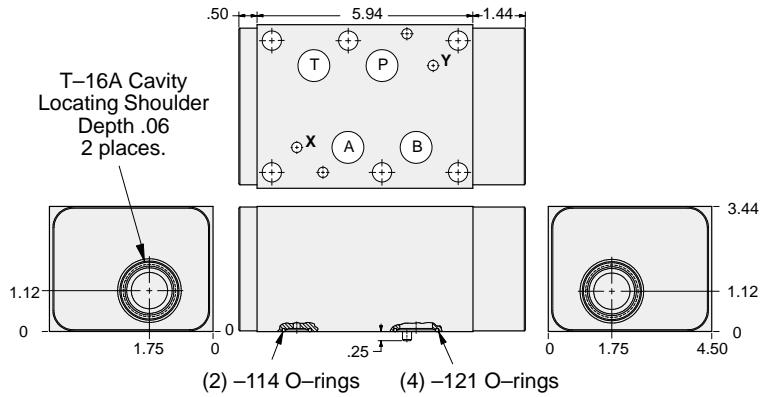
- Aluminum rated to 3000 psi and Ductile Iron rated to 5000 psi.
- See page viii for ordering cartridge/body and seals. Pressure ratings, material specifications on page xiv.



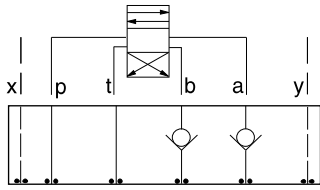
FUNCTION

On **A** and **B**
Free Flow Into Valve

Check Valves



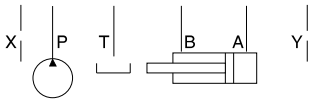
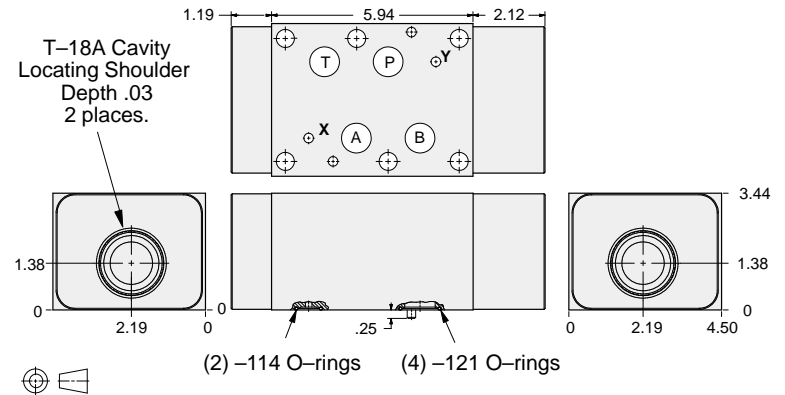
ALUMINUM		DUCTILE IRON	
Model Code	List Price	Model Code	List Price
IBW		IBW/S	



FUNCTION

On **A**
Free Flow Into Valve
(High Capacity)

Check Valves



ALUMINUM		DUCTILE IRON	
Model Code	List Price	Model Code	List Price
IBY		IBY/S	

TYPICAL CARTRIDGES USED WITH BODIES SHOWN ABOVE			
	Check Valve, Free Flow Port 1 to Port 2 (Nose-to-Side)		
	CX*A Page 5.09		
OTHER VALVES:			

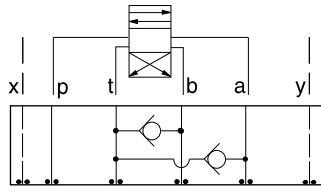
08 CHECK



ISO 08 SANDWICH BODIES



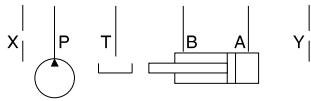
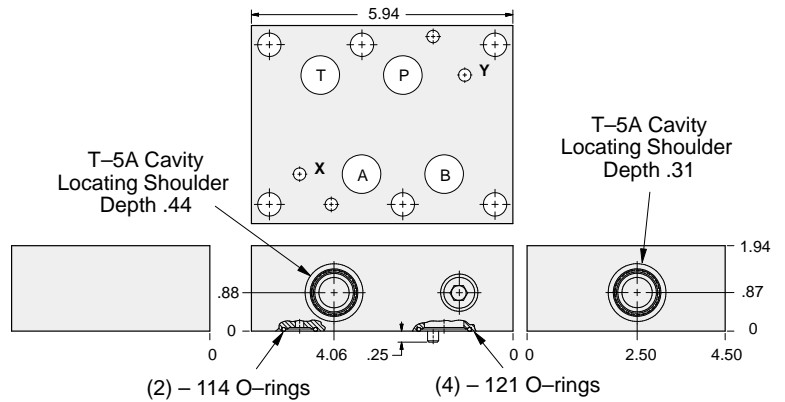
- Aluminum rated to 3000 psi and Ductile Iron rated to 5000 psi.
- See page viii for ordering cartridge/body and seals. Pressure ratings, material specifications on page xiv.



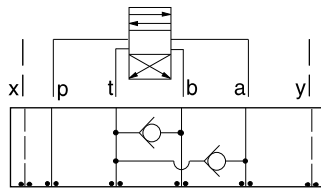
FUNCTION

T to A and B

Check Valves



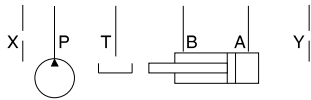
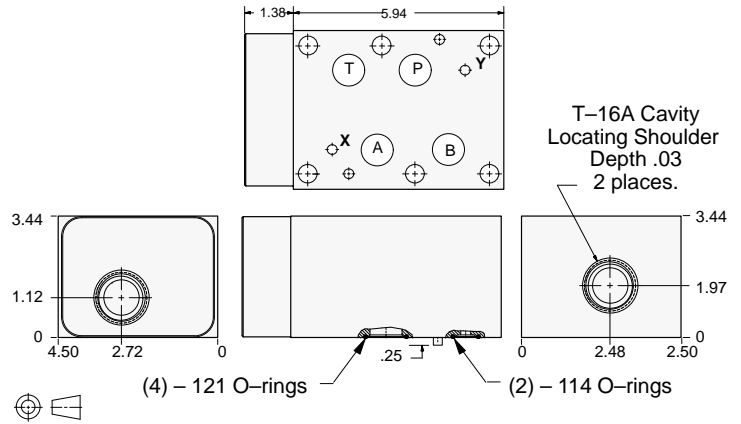
ALUMINUM		DUCTILE IRON	
Model Code	List Price	Model Code	List Price
CDX		CDX/S	



FUNCTION

T to A and B
(High Capacity)

Check Valves



ALUMINUM		DUCTILE IRON	
Model Code	List Price	Model Code	List Price
CDV		CDV/S	

TYPICAL CARTRIDGES USED WITH BODIES SHOWN ABOVE

	Check Valve, Free Flow Port 1 to Port 2 (Nose-to-Side)		
	CX*A Page 5.08, 5.09		
OTHER VALVES:			

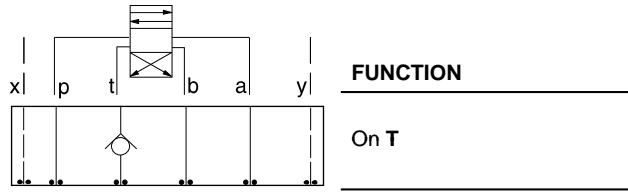
08 CHECK



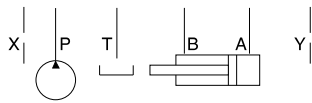
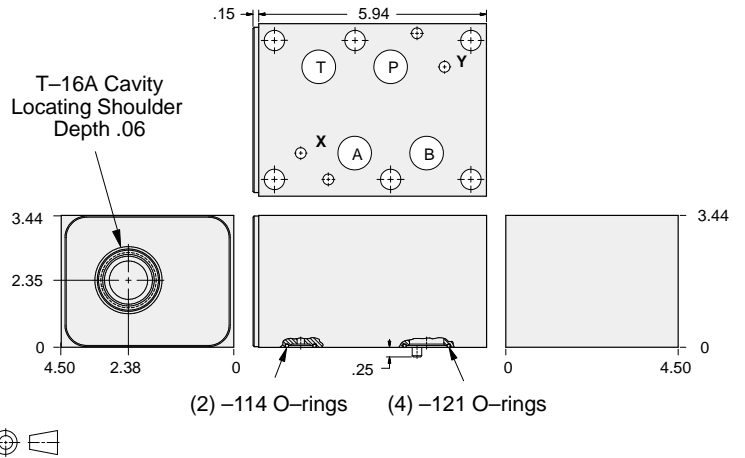
ISO 08 SANDWICH BODIES



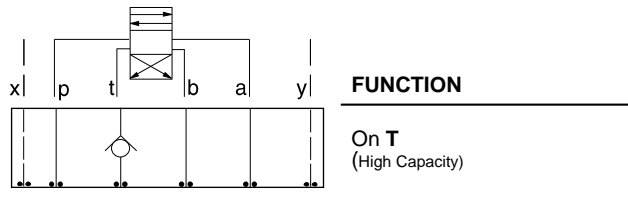
- Aluminum rated to 3000 psi and Ductile Iron rated to 5000 psi.
- See page viii for ordering cartridge/body and seals. Pressure ratings, material specifications on page xiv.



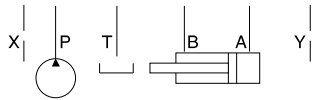
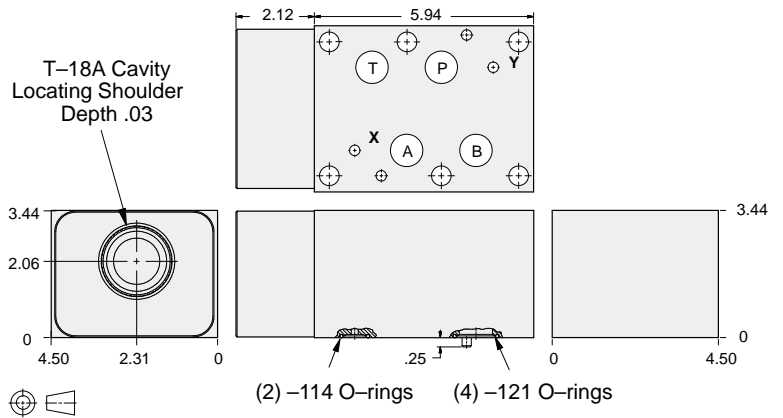
Check Valves



ALUMINUM		DUCTILE IRON	
Model Code	List Price	Model Code	List Price
IBT		IBT/S	



Check Valves



ALUMINUM		DUCTILE IRON	
Model Code	List Price	Model Code	List Price
IBV		IBV/S	

TYPICAL CARTRIDGES USED WITH BODIES SHOWN ABOVE			
	Check Valve, Free Flow Port 1 to Port 2 (Nose-to-Side)		
	CX*A Page 5.09		
OTHER VALVES:			

08 CHECK