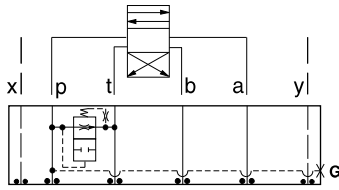




ISO 08 SANDWICH BODIES



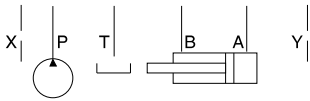
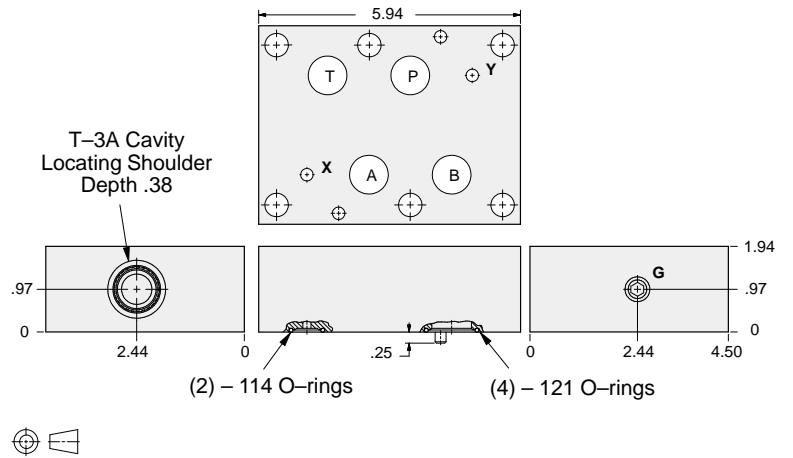
- Aluminum rated to 3000 psi and Ductile Iron rated to 5000 psi.
- See page viii for ordering cartridge/body and seals. Pressure ratings, material specifications on page xiv.



FUNCTION

Air-Bleed and Start-Up

Circuit Savers



Gage Port (Plugged)	ALUMINUM		DUCTILE IRON	
	Model Code	List Price	Model Code	List Price
.25 NPTF	CDP		CDP/S	
.25 BSPP	CDP/M		CDP/T	

08 CIRCUIT SAVER

TYPICAL CARTRIDGES USED WITH BODIES SHOWN ABOVE			
	Air Bleed and Start-up Valve		
	NQEB Page 10.16		

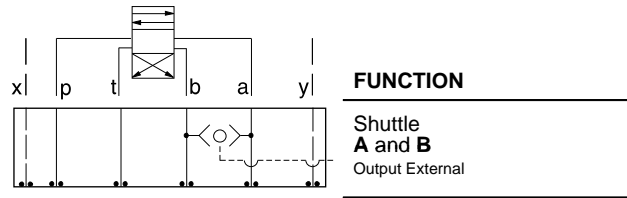
OTHER VALVES:



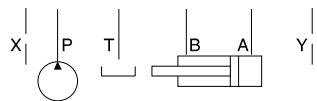
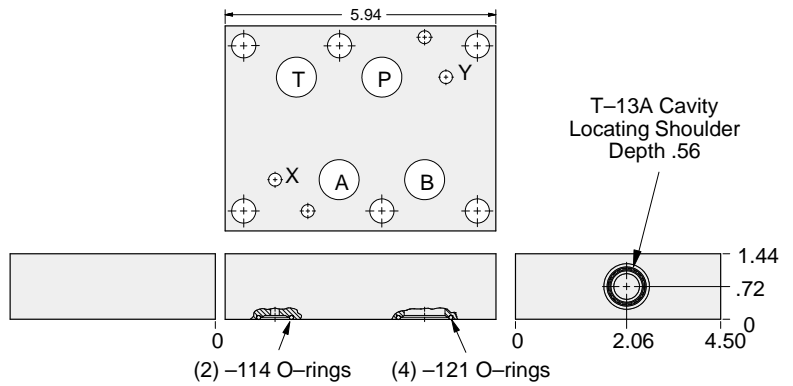
ISO 08 SANDWICH BODIES



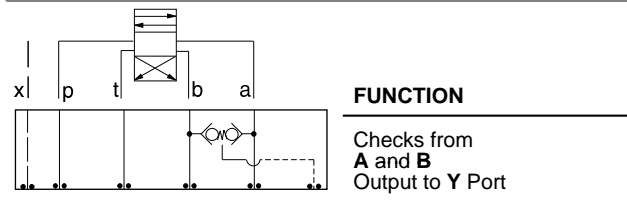
- Aluminum rated to 3000 psi and Ductile Iron rated to 5000 psi.
- See page viii for ordering cartridge/body and seals. Pressure ratings, material specifications on page xiv.



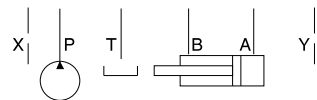
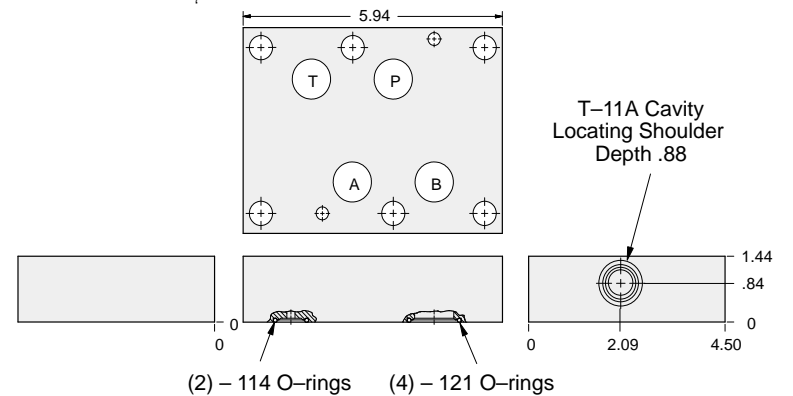
Circuit Savers



ALUMINUM		DUCTILE IRON	
Model Code	List Price	Model Code	List Price
IBS		IBS/S	



Circuit Savers



ALUMINUM		DUCTILE IRON	
Model Code	List Price	Model Code	List Price
HBS		HBS/S	

TYPICAL CARTRIDGES USED WITH BODIES SHOWN ABOVE			
<p>1-2 Ext.</p>	2 Port Shuttle Valve, Signal External		
	CSAA Page 10.09, (use with IBS)		
<p>1-3 2</p>	3 Port Back-to-Back Check Valve, Signal at Port 3		
	CDAB Page 10.10 (use with HBS)		
OTHER VALVES:			

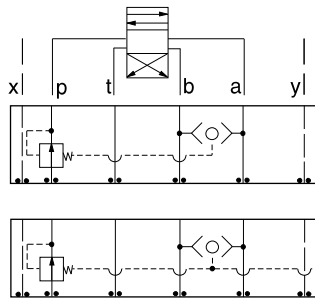
08 CIRCUIT SAVER



ISO 08 SANDWICH BODIES



- Aluminum rated to 3000 psi and Ductile Iron rated to 5000 psi.
- See page viii for ordering cartridge/body and seals. Pressure ratings, material specifications on page xiv.

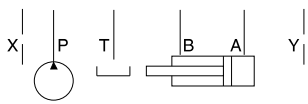
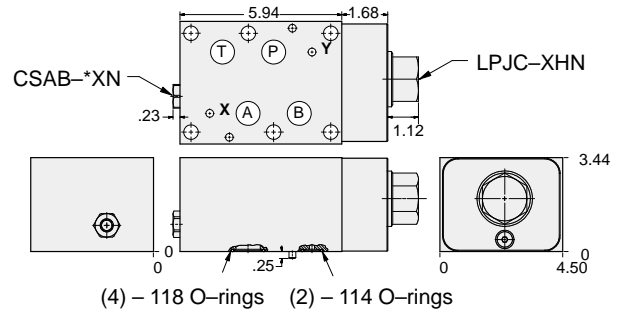


FUNCTION

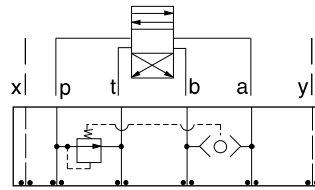
Pressure Compensator (Restrictive)

Pressure Compensator (Restrictive) w/Load-Sensing Port

Circuit Savers



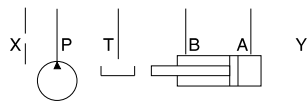
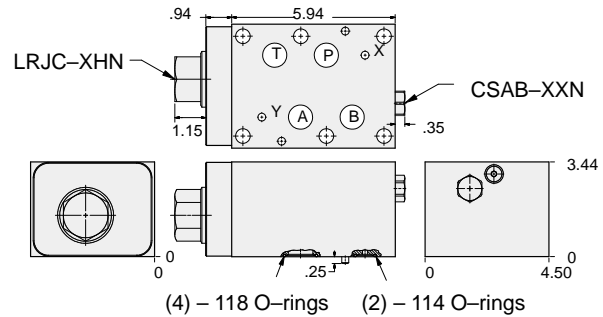
Shuttle Cartridge	External Shuttle Port	ALUMINUM		DUCTILE IRON	
		Model Code	List Price	Model Code	List Price
CSAB-XXN	None	YFIA-XHN-CA		YFIA-XHN-CA/S	
CSAB-AXN	SAE-4	YFIB-XHN-CA		YFIB-XHN-CA/S	
CSAB-BXN	.25 BSPP	YFIB-XHN-CA/M		YFIB-XHN-CA/T	



FUNCTION

Pressure Compensator (Bypass)

Circuit Savers



ALUMINUM		DUCTILE IRON	
Model Code	List Price	Model Code	List Price
YFIC-XHN-CA		YFIC-XHN-CA/S	

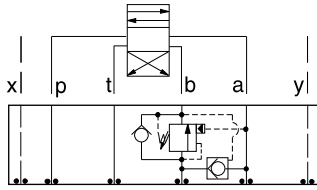


ISO 08 SANDWICH BODIES



- Aluminum rated to 3000 psi and Ductile Iron rated to 5000 psi.
- See page viii for ordering cartridge/body and seals. Pressure ratings, material specifications on page xiv.

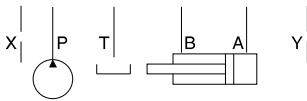
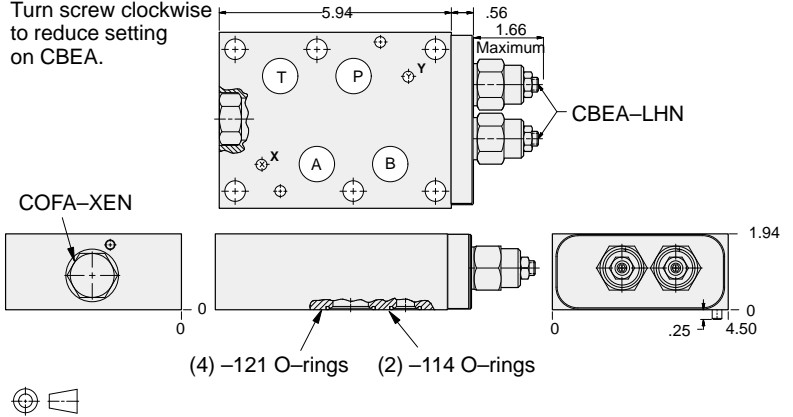
Circuit Savers



FUNCTION

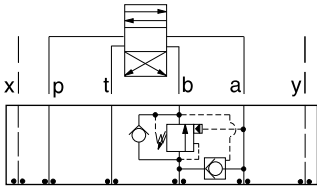
B to A
Regenerative

Turn screw clockwise to reduce setting on CBEA.



ALUMINUM		DUCTILE IRON	
Model Code	List Price	Model Code	List Price
YDFF-LHN-CA		YDFF-LHN-CA/S	

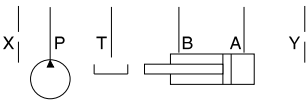
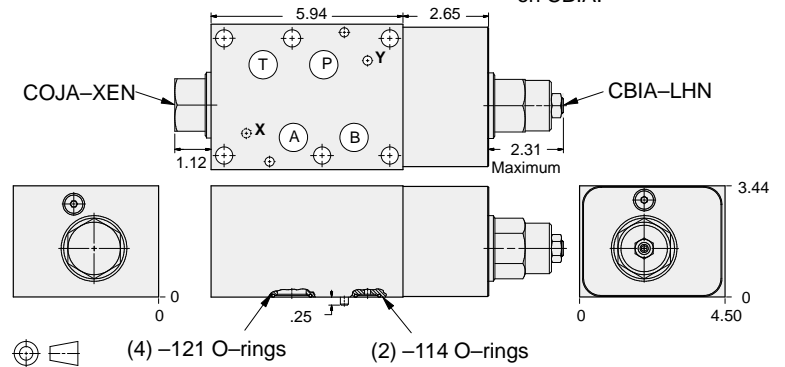
Circuit Savers



FUNCTION

B to A
Regenerative
(High Capacity)

Turn screw clockwise to reduce setting on CBIA.



ALUMINUM		DUCTILE IRON	
Model Code	List Price	Model Code	List Price
YDGF-LHN-CA		YDGF-LHN-CA/S	

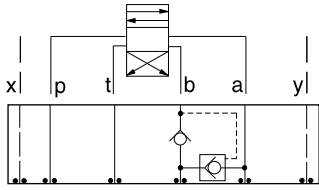
08 CIRCUIT SAVER



ISO 08 SANDWICH BODIES



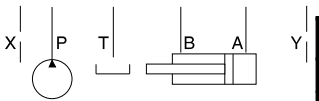
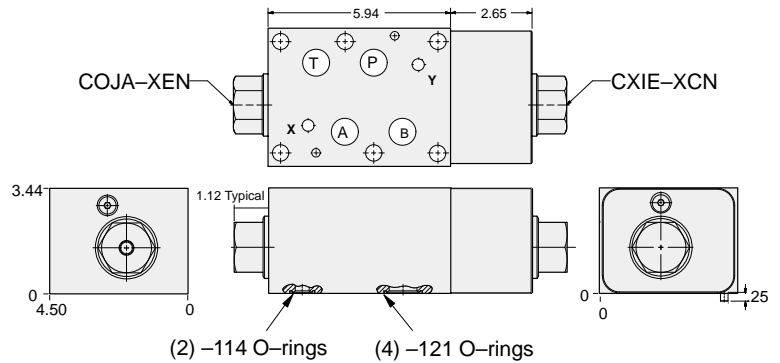
- Aluminum rated to 3000 psi and Ductile Iron rated to 5000 psi.
- See page viii for ordering cartridge/body and seals. Pressure ratings, material specifications on page xiv.



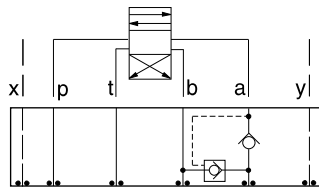
FUNCTION

B to A
Regenerative
(Full Time)

Circuit Savers



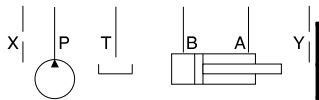
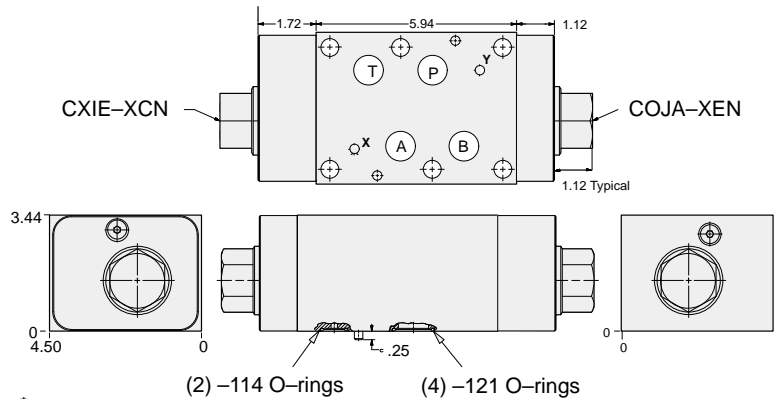
ALUMINUM		DUCTILE IRON	
<i>Model Code</i>	<i>List Price</i>	<i>Model Code</i>	<i>List Price</i>
YDGH-XCN-CA		YDGH-XCN-CA/S	



FUNCTION

A to B
Regenerative
(Full Time)

Circuit Savers



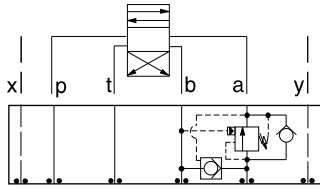
ALUMINUM		DUCTILE IRON	
<i>Model Code</i>	<i>List Price</i>	<i>Model Code</i>	<i>List Price</i>
YDGI-XCN-CA		YDGI-XCN-CA/S	



ISO 08 SANDWICH BODIES



- Aluminum rated to 3000 psi and Ductile Iron rated to 5000 psi.
- See page viii for ordering cartridge/body and seals. Pressure ratings, material specifications on page xiv.

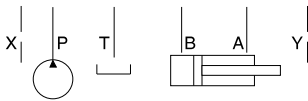
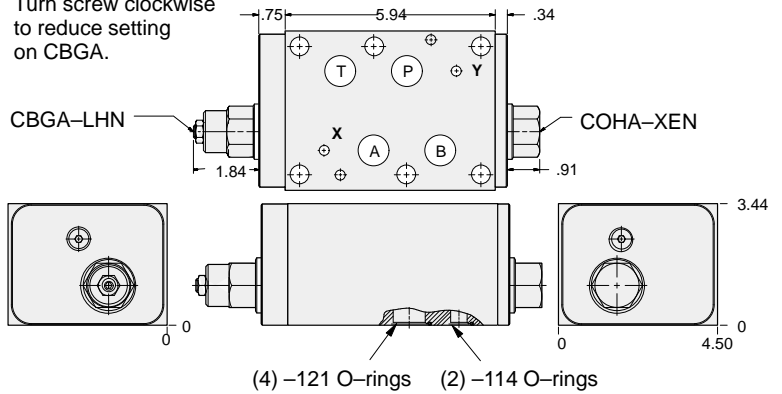


FUNCTION

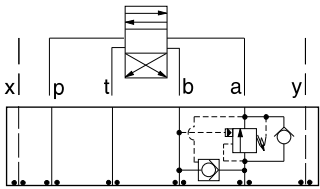
A to B
Regenerative

Circuit Savers

Turn screw clockwise to reduce setting on CBGA.



ALUMINUM		DUCTILE IRON	
Model Code	List Price	Model Code	List Price
YDFJ-LHN-CA		YDFJ-LHN-CA/S	

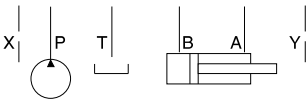
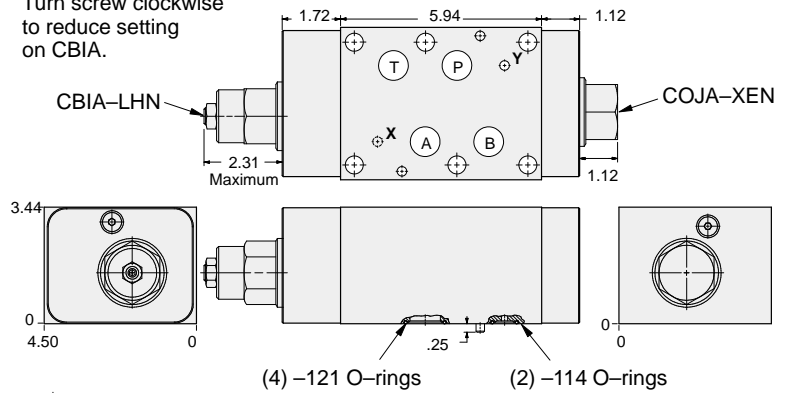


FUNCTION

A to B
Regenerative
(High Capacity)

Circuit Savers

Turn screw clockwise to reduce setting on CBIA.



ALUMINUM		DUCTILE IRON	
Model Code	List Price	Model Code	List Price
YDGE-LHN-CA		YDGE-LHN-CA/S	