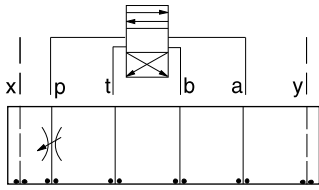




ISO 08 SANDWICH BODIES



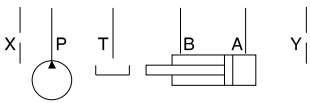
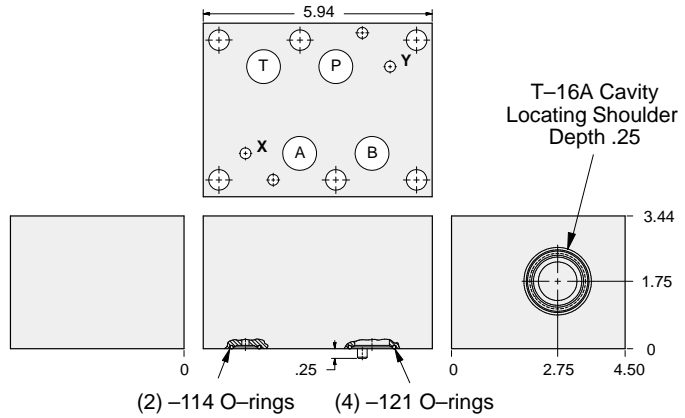
- Aluminum rated to 3000 psi and Ductile Iron rated to 5000 psi.
- See page viii for ordering cartridge/body and seals. Pressure ratings, material specifications on page xiv.



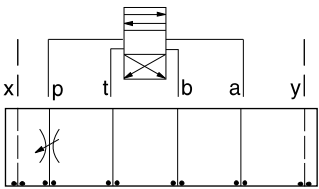
FUNCTION

Meter-In P

Flow Control Valves



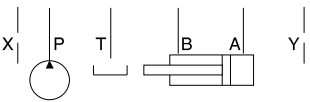
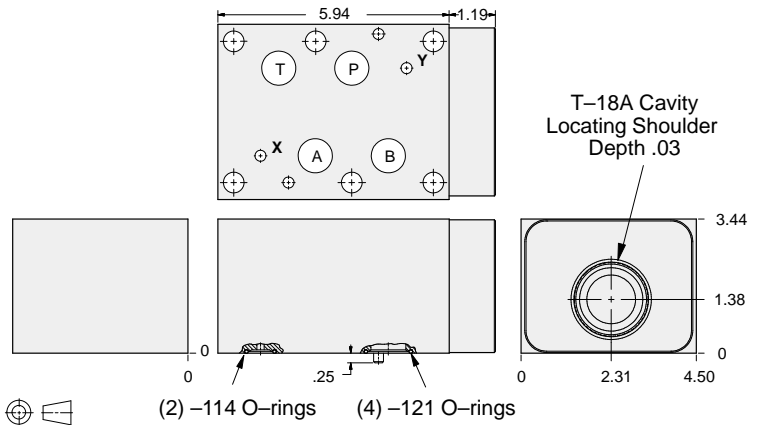
| ALUMINUM | | DUCTILE IRON | |
|------------|------------|--------------|------------|
| Model Code | List Price | Model Code | List Price |
| IBP | | IBP/S | |



FUNCTION

Meter-In P
(High Capacity)

Flow Control Valves



| ALUMINUM | | DUCTILE IRON | |
|------------|------------|--------------|------------|
| Model Code | List Price | Model Code | List Price |
| IBO | | IBO/S | |

08 FLOW CONTROL

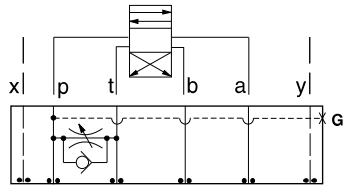
| TYPICAL CARTRIDGES USED WITH BODIES SHOWN ABOVE | | | |
|---|--|--|--|
| | Fully Adjustable Needle Valve | | |
| | NF*C Page 5.13 | | |
| | Fixed Orifice, Pressure-Compensated Flow Control | | |
| | FX*A Page 5.21 | | |
| OTHER VALVES: | | | |



ISO 08 SANDWICH BODIES

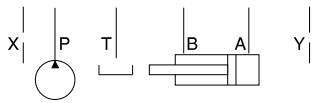
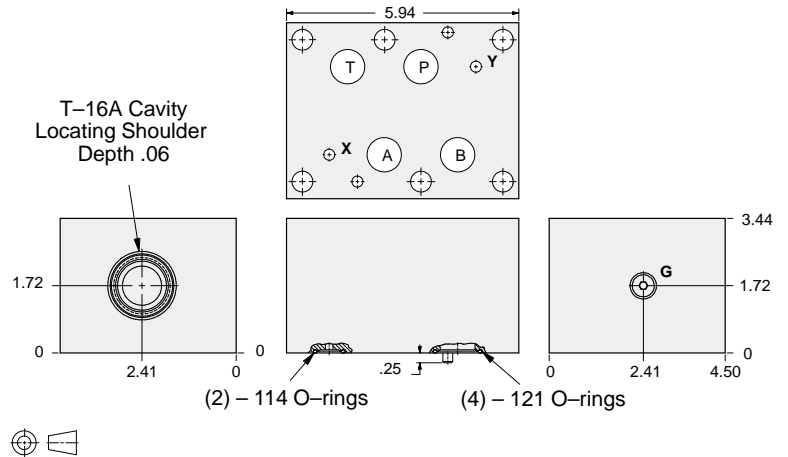


- Aluminum rated to 3000 psi and Ductile Iron rated to 5000 psi.
- See page viii for ordering cartridge/body and seals. Pressure ratings, material specifications on page xiv.



FUNCTION
Bleed-Off
P to T

Flow Control Valves



| Gauge Port (Plugged) | ALUMINUM | | DUCTILE IRON | |
|-------------------------|--------------|------------|--------------|------------|
| | Model Code | List Price | Model Code | List Price |
| .25 NPTF | CDO | | CDO/S | |
| .25 BSPP | CDO/M | | CDO/T | |

| TYPICAL CARTRIDGES USED WITH BODIES SHOWN ABOVE | | | |
|---|--|--|--|
| | Fully Adjustable Needle Valve | | Fixed Orifice, Pressure-Compensated Flow Control |
| | NFEC Page 5.13 | | FXEA Page 5.21 |
| | Fully Adjustable Needle Valve with Reverse Free Flow Check | | Fixed Orifice, Pressure-Compensated Flow Control with Reverse Free Flow Check |
| | NCFB Page 5.17 | | FCEB Page 5.23 |
| | Fully Adjustable Needle Valve with Reverse Free Flow Check, Low Flow | | Fully Adjustable, Pressure-Compensated Flow Control with Reverse Free Flow Check |
| | NFCF Page 5.19 | | FDEA Page 5.25 |
| OTHER VALVES: | CNGC | | |

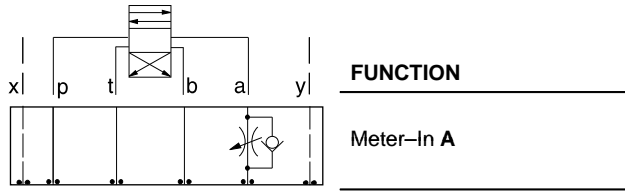
08 FLOW CONTROL



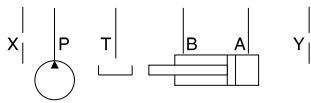
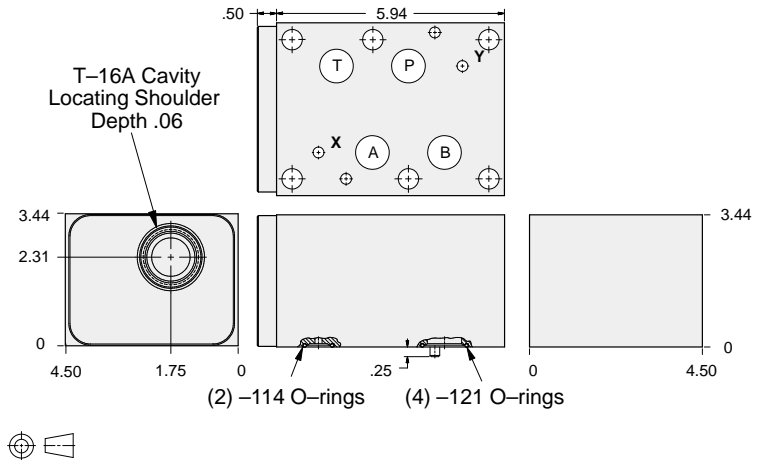
ISO 08 SANDWICH BODIES



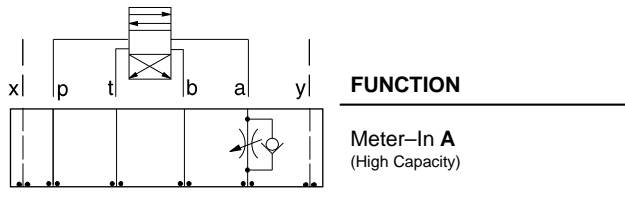
- Aluminum rated to 3000 psi and Ductile Iron rated to 5000 psi.
- See page viii for ordering cartridge/body and seals. Pressure ratings, material specifications on page xiv.



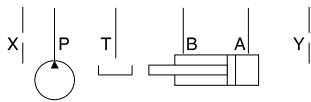
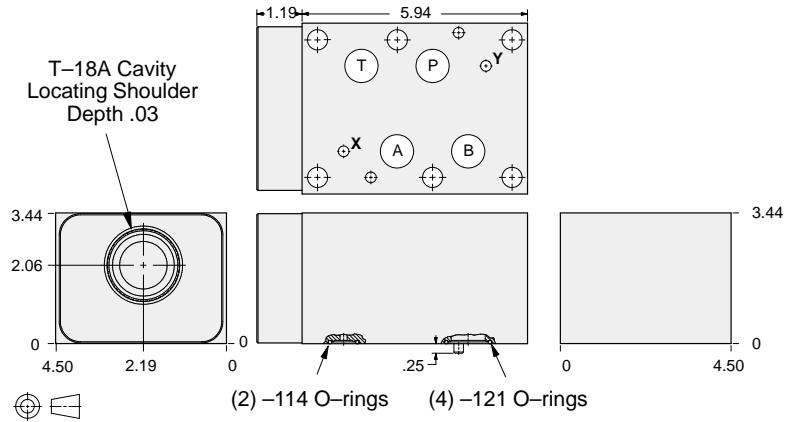
Flow Control Valves



| ALUMINUM | | DUCTILE IRON | |
|------------|------------|--------------|------------|
| Model Code | List Price | Model Code | List Price |
| IBC | | IBC/S | |



Flow Control Valves



| ALUMINUM | | DUCTILE IRON | |
|------------|------------|--------------|------------|
| Model Code | List Price | Model Code | List Price |
| IBG | | IBG/S | |

TYPICAL CARTRIDGES USED WITH BODIES SHOWN ABOVE

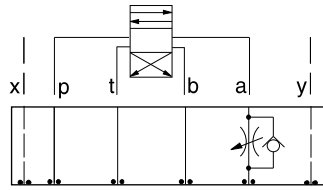
| | | | |
|---------------|--|--|--|
| | Fully Adjustable Needle Valve NF*C Page 5.13 | | Fixed Orifice, Pressure-Compensated Flow Control FX*A Page 5.21 |
| | Fully Adjustable Needle Valve with Reverse Free Flow Check NC*B Page 5.17 | | Fixed Orifice, Pressure-Compensated Flow Control with Reverse Free Flow Check FC*B Page 5.23 |
| | Fully Adjustable Needle Valve with Reverse Free Flow Check, Low Flow NC*C Page 5.19 | | Fully Adjustable, Pressure-Compensated Flow Control with Reverse Free Flow Check FD*A Page 5.25 |
| OTHER VALVES: | CN*C | | |



ISO 08 SANDWICH BODIES



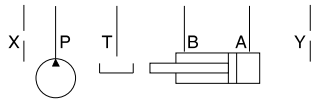
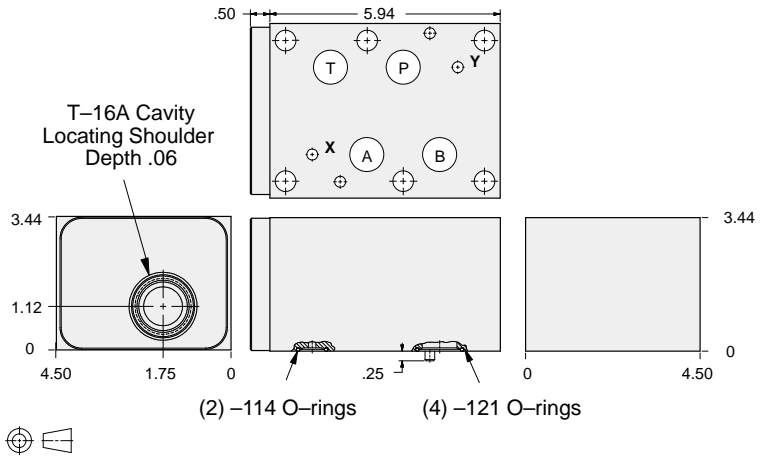
- Aluminum rated to 3000 psi and Ductile Iron rated to 5000 psi.
- See page viii for ordering cartridge/body and seals. Pressure ratings, material specifications on page xiv.



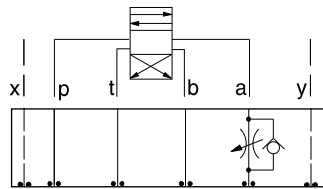
FUNCTION

Meter-Out A

Flow Control Valves



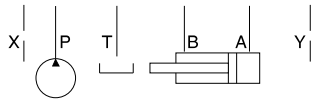
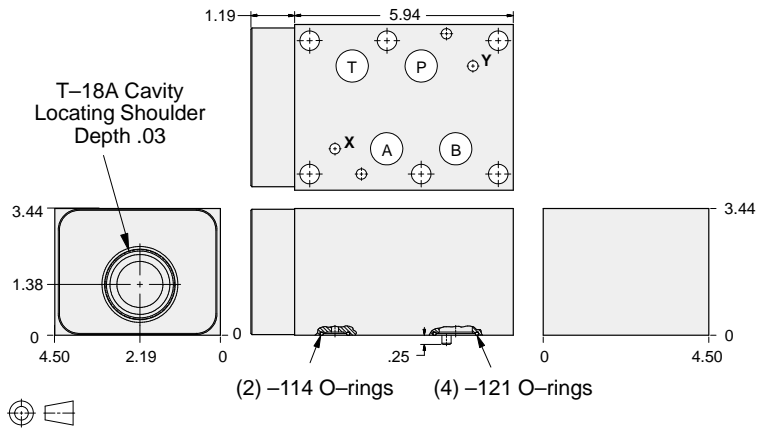
| ALUMINUM | | DUCTILE IRON | |
|------------|------------|--------------|------------|
| Model Code | List Price | Model Code | List Price |
| IBA | | IBA/S | |



FUNCTION

Meter-Out A
(High Capacity)

Flow Control Valves



| ALUMINUM | | DUCTILE IRON | |
|------------|------------|--------------|------------|
| Model Code | List Price | Model Code | List Price |
| IBE | | IBE/S | |

| TYPICAL CARTRIDGES USED WITH BODIES SHOWN ABOVE | | | |
|---|--|--|--|
| | Fully Adjustable Needle Valve | | Fixed Orifice, Pressure-Compensated Flow Control |
| | NF*C Page 5.13 | | FX*A Page 5.21 |
| | Fully Adjustable Needle Valve with Reverse Free Flow Check | | Fixed Orifice, Pressure-Compensated Flow Control with Reverse Free Flow Check |
| | NC*B Page 5.17 | | FC*B Page 5.23 |
| | Fully Adjustable Needle Valve with Reverse Free Flow Check, Low Flow | | Fully Adjustable, Pressure-Compensated Flow Control with Reverse Free Flow Check |
| | NC*C Page 5.19 | | FD*A Page 5.25 |
| OTHER VALVES: | CN*C | | |

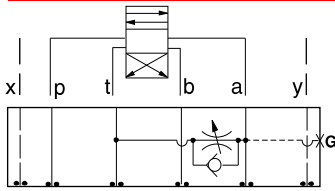
08 FLOW CONTROL



ISO 08 SANDWICH BODIES



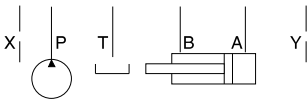
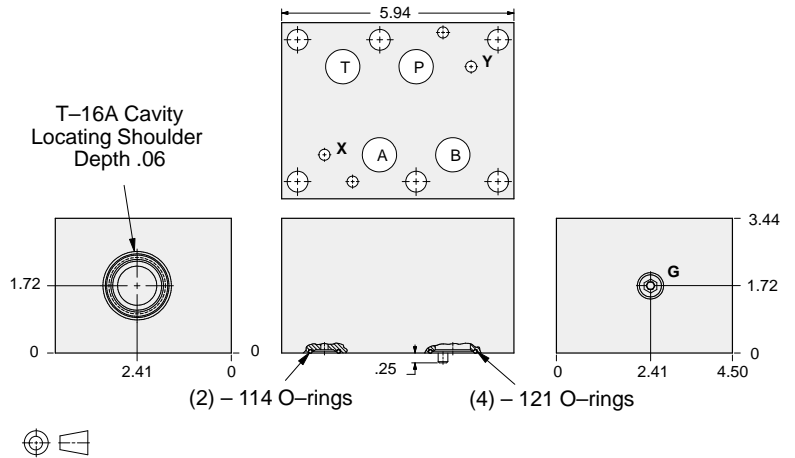
- Aluminum rated to 3000 psi and Ductile Iron rated to 5000 psi.
- See page viii for ordering cartridge/body and seals. Pressure ratings, material specifications on page xiv.



FUNCTION

Bleed-Off
A to T

Flow Control Valves



| Gage Port (Plugged) | ALUMINUM | | DUCTILE IRON | |
|------------------------|--------------|------------|--------------|------------|
| | Model Code | List Price | Model Code | List Price |
| .25 NPTF | CDC | | CDC/S | |
| .25 BSPP | CDC/M | | CDC/T | |

08 FLOW CONTROL

| TYPICAL CARTRIDGES USED WITH BODIES SHOWN ABOVE | | | |
|---|--|--|--|
| | Fully Adjustable Needle Valve NFEC Page 5.13 | | Fixed Orifice, Pressure-Compensated Flow Control FXEA Page 5.21 |
| | Fully Adjustable Needle Valve with Reverse Free Flow Check NCFB Page 5.17 | | Fixed Orifice, Pressure-Compensated Flow Control with Reverse Free Flow Check FCEB Page 5.23 |
| | Fully Adjustable Needle Valve with Reverse Free Flow Check, Low Flow NCFC Page 5.19 | | Fully Adjustable, Pressure-Compensated Flow Control with Reverse Free Flow Check FDEA Page 5.25 |
| OTHER VALVES: | CNGC | | |

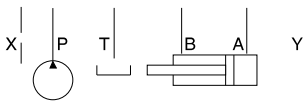
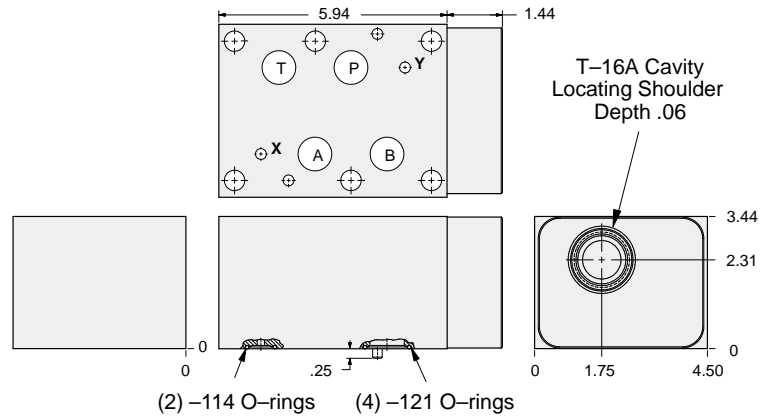
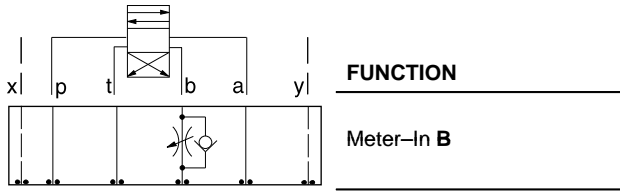


ISO 08 SANDWICH BODIES



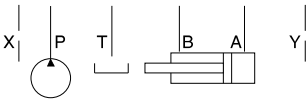
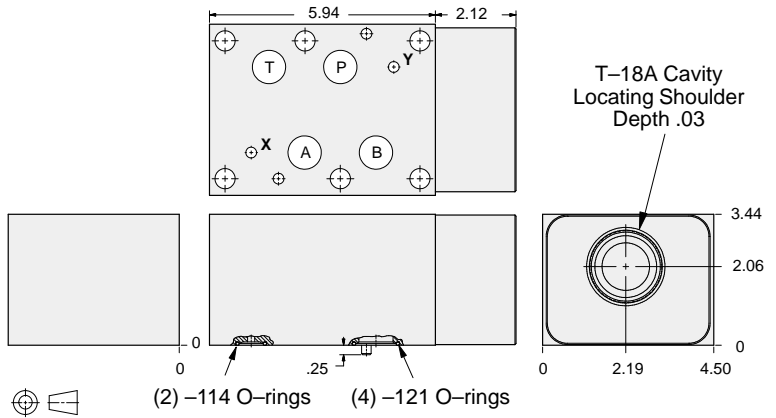
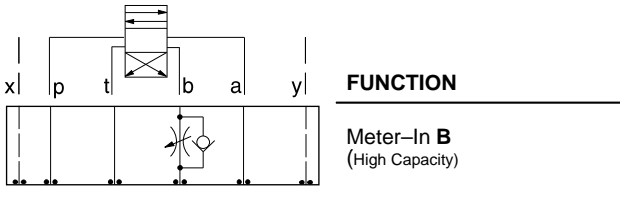
- Aluminum rated to 3000 psi and Ductile Iron rated to 5000 psi.
- See page viii for ordering cartridge/body and seals. Pressure ratings, material specifications on page xiv.

Flow Control Valves



| ALUMINUM | | DUCTILE IRON | |
|------------|------------|--------------|------------|
| Model Code | List Price | Model Code | List Price |
| IBD | | IBD/S | |

Flow Control Valves



| ALUMINUM | | DUCTILE IRON | |
|------------|------------|--------------|------------|
| Model Code | List Price | Model Code | List Price |
| IBH | | IBH/S | |

TYPICAL CARTRIDGES USED WITH BODIES SHOWN ABOVE

| | | | |
|---------------|--|--|--|
| | Fully Adjustable Needle Valve | | Fixed Orifice, Pressure-Compensated Flow Control |
| | NF*C Page 5.13 | | FX*A Page 5.21 |
| | Fully Adjustable Needle Valve with Reverse Free Flow Check | | Fixed Orifice, Pressure-Compensated Flow Control with Reverse Free Flow Check |
| | NC*B Page 5.17 | | FC*B Page 5.23 |
| | Fully Adjustable Needle Valve with Reverse Free Flow Check, Low Flow | | Fully Adjustable, Pressure-Compensated Flow Control with Reverse Free Flow Check |
| | NC*C Page 5.19 | | FD*A Page 5.25 |
| OTHER VALVES: | CN*C | | |

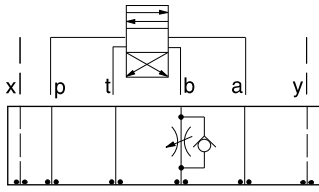
08 FLOW CONTROL



ISO 08 SANDWICH BODIES



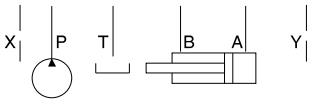
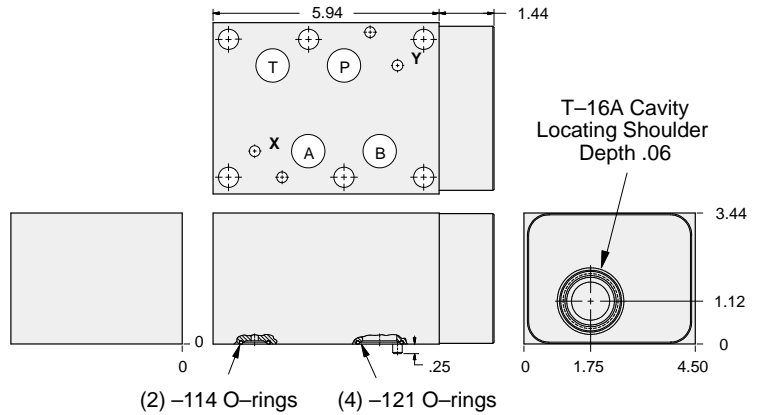
- Aluminum rated to 3000 psi and Ductile Iron rated to 5000 psi.
- See page viii for ordering cartridge/body and seals. Pressure ratings, material specifications on page xiv.



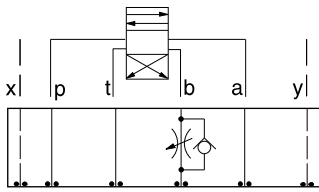
FUNCTION

Meter-Out B

Flow Control Valves



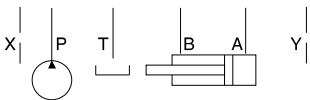
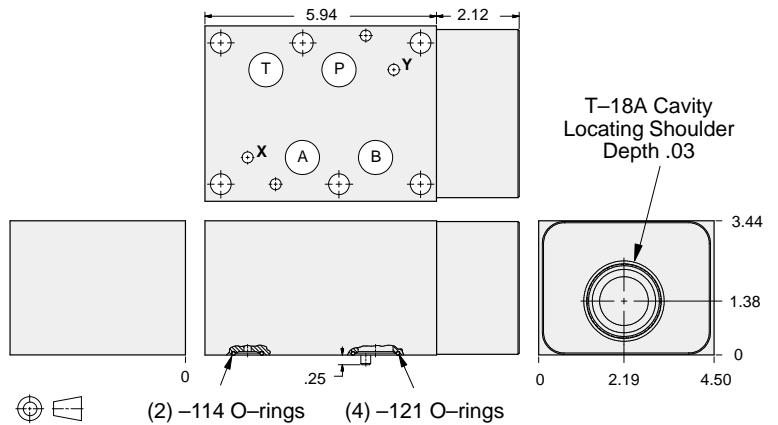
| ALUMINUM | | DUCTILE IRON | |
|------------|------------|--------------|------------|
| Model Code | List Price | Model Code | List Price |
| IBB | | IBB/S | |



FUNCTION

Meter-Out B
(High Capacity)

Flow Control Valves



| ALUMINUM | | DUCTILE IRON | |
|------------|------------|--------------|------------|
| Model Code | List Price | Model Code | List Price |
| IBF | | IBF/S | |

TYPICAL CARTRIDGES USED WITH BODIES SHOWN ABOVE

| | | | |
|----------------------|--|--|--|
| | Fully Adjustable Needle Valve | | Fixed Orifice, Pressure-Compensated Flow Control |
| | NF*C Page 5.13 | | FX*A Page 5.21 |
| | Fully Adjustable Needle Valve with Reverse Free Flow Check | | Fixed Orifice, Pressure-Compensated Flow Control with Reverse Free Flow Check |
| | NC*B Page 5.17 | | FC*B Page 5.23 |
| | Fully Adjustable Needle Valve with Reverse Free Flow Check, Low Flow | | Fully Adjustable, Pressure-Compensated Flow Control with Reverse Free Flow Check |
| | NC*C Page 5.19 | | FD*A Page 5.25 |
| OTHER VALVES: | CN*C | | |

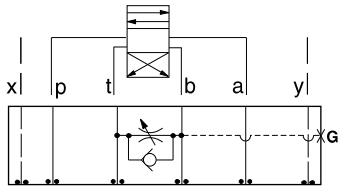


ISO 08 SANDWICH BODIES



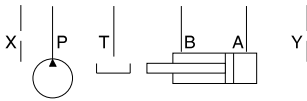
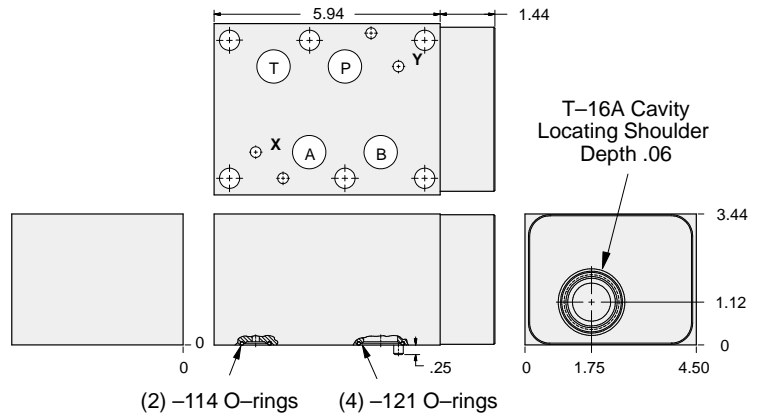
- Aluminum rated to 3000 psi and Ductile Iron rated to 5000 psi.
- See page viii for ordering cartridge/body and seals. Pressure ratings, material specifications on page xiv.

Flow Control Valves



FUNCTION

Meter-Out B



| ALUMINUM | | DUCTILE IRON | |
|------------|------------|--------------|------------|
| Model Code | List Price | Model Code | List Price |
| CDD | | CDD/S | |

| TYPICAL CARTRIDGES USED WITH BODIES SHOWN ABOVE | | | |
|---|---|--|---|
| | Fully Adjustable Needle Valve NF*C Page 5.13 | | Fixed Orifice, Pressure-Compensated Flow Control FX*A Page 5.21 |
| | Fully Adjustable Needle Valve with Reverse Free Flow Check NC*B Page 5.17 | | Fixed Orifice, Pressure-Compensated Flow Control with Reverse Free Flow Check FC*B Page 5.23 |
| | Fully Adjustable Needle Valve with Reverse Free Flow Check, Low Flow NC*C Page 5.19 | | Fully Adjustable, Pressure-Compensated Flow Control with Reverse Free Flow Check FD*A Page 5.25 |
| OTHER VALVES: | CN*C | | |

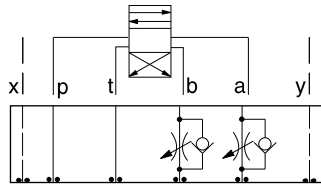
08 FLOW CONTROL



ISO 08 SANDWICH BODIES



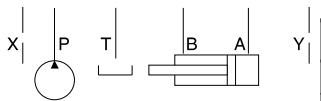
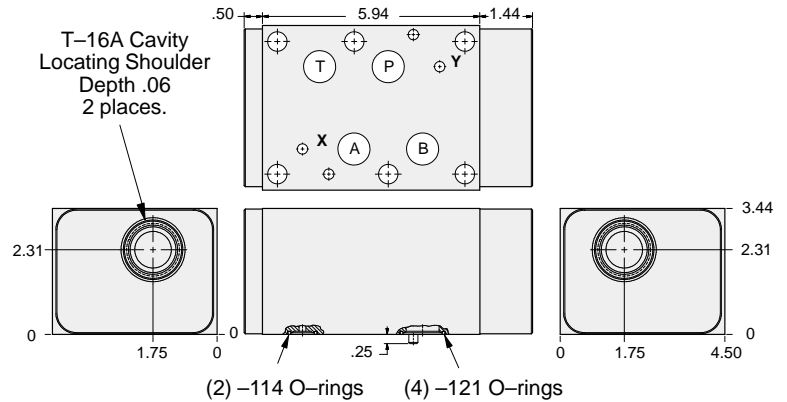
- Aluminum rated to 3000 psi and Ductile Iron rated to 5000 psi.
- See page viii for ordering cartridge/body and seals. Pressure ratings, material specifications on page xiv.



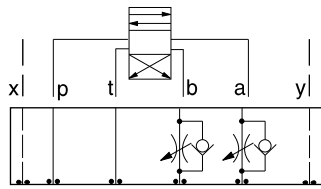
FUNCTION

Meter-In
A and B

Flow Control Valves



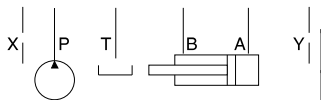
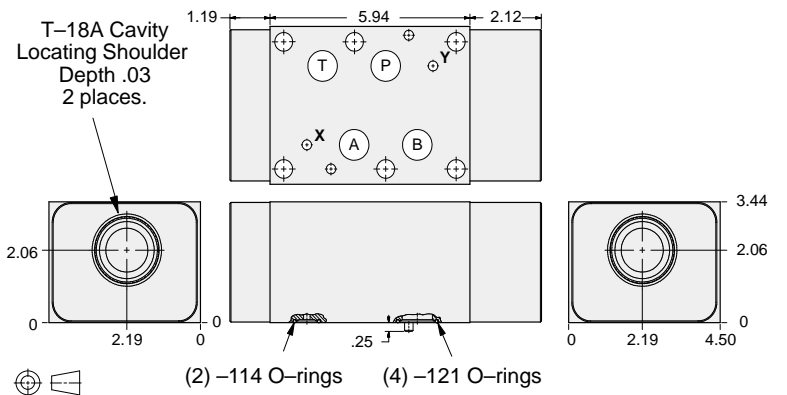
| ALUMINUM | | DUCTILE IRON | |
|------------|------------|--------------|------------|
| Model Code | List Price | Model Code | List Price |
| IBX | | IBX/S | |



FUNCTION

Meter-In
A and B
(High Capacity)

Flow Control Valves



| ALUMINUM | | DUCTILE IRON | |
|------------|------------|--------------|------------|
| Model Code | List Price | Model Code | List Price |
| IBZ | | IBZ/S | |

TYPICAL CARTRIDGES USED WITH BODIES SHOWN ABOVE

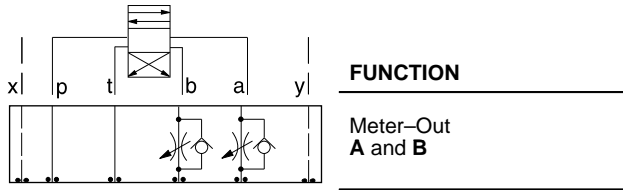
| | | | |
|----------------------|--|--|--|
| | Fully Adjustable Needle Valve | | Fixed Orifice, Pressure-Compensated Flow Control |
| | NF*C Page 5.13 | | FX*A Page 5.21 |
| | Fully Adjustable Needle Valve with Reverse Free Flow Check | | Fixed Orifice, Pressure-Compensated Flow Control with Reverse Free Flow Check |
| | NC*B Page 5.17 | | FC*B Page 5.23 |
| | Fully Adjustable Needle Valve with Reverse Free Flow Check, Low Flow | | Fully Adjustable, Pressure-Compensated Flow Control with Reverse Free Flow Check |
| | NC*C Page 5.19 | | FD*A Page 5.25 |
| OTHER VALVES: | CN*C | | |



ISO 08 SANDWICH BODIES



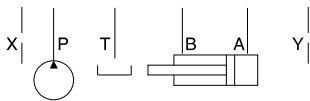
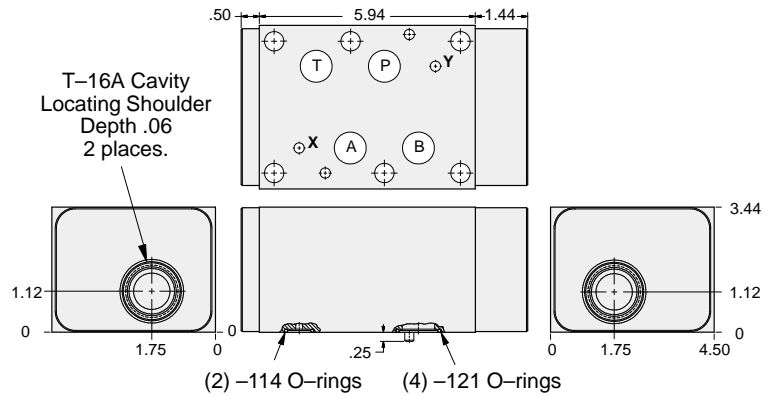
- Aluminum rated to 3000 psi and Ductile Iron rated to 5000 psi.
- See page viii for ordering cartridge/body and seals. Pressure ratings, material specifications on page xiv.



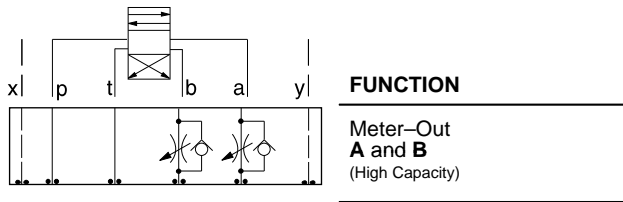
FUNCTION

Meter-Out
A and B

Flow Control Valves



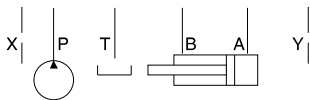
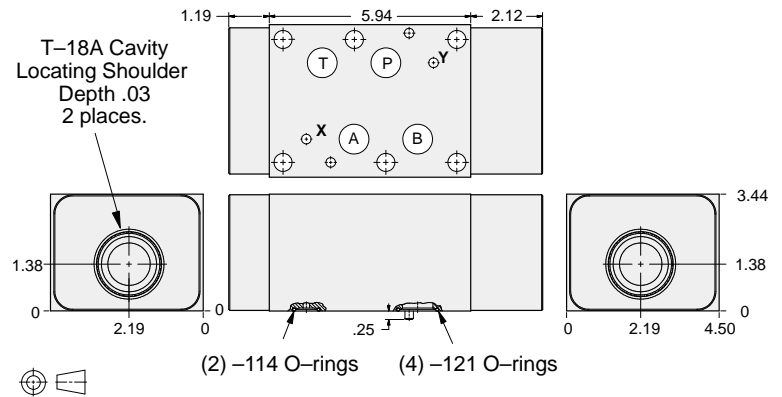
| ALUMINUM | | DUCTILE IRON | |
|------------|------------|--------------|------------|
| Model Code | List Price | Model Code | List Price |
| IBW | | IBW/S | |



FUNCTION

Meter-Out
A and B
(High Capacity)

Flow Control Valves



| ALUMINUM | | DUCTILE IRON | |
|------------|------------|--------------|------------|
| Model Code | List Price | Model Code | List Price |
| IBY | | IBY/S | |

| TYPICAL CARTRIDGES USED WITH BODIES SHOWN ABOVE | | | |
|---|--|--|--|
| | Fully Adjustable Needle Valve NF*C Page 5.13 | | Fixed Orifice, Pressure-Compensated Flow Control FX*A Page 5.21 |
| | Fully Adjustable Needle Valve with Reverse Free Flow Check NC*B Page 5.17 | | Fixed Orifice, Pressure-Compensated Flow Control with Reverse Free Flow Check FC*B Page 5.23 |
| | Fully Adjustable Needle Valve with Reverse Free Flow Check, Low Flow NC*C Page 5.19 | | Fully Adjustable, Pressure-Compensated Flow Control with Reverse Free Flow Check FD*A Page 5.25 |
| OTHER VALVES: | CN*C | | |

08 FLOW CONTROL

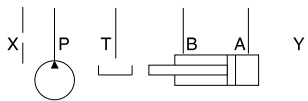
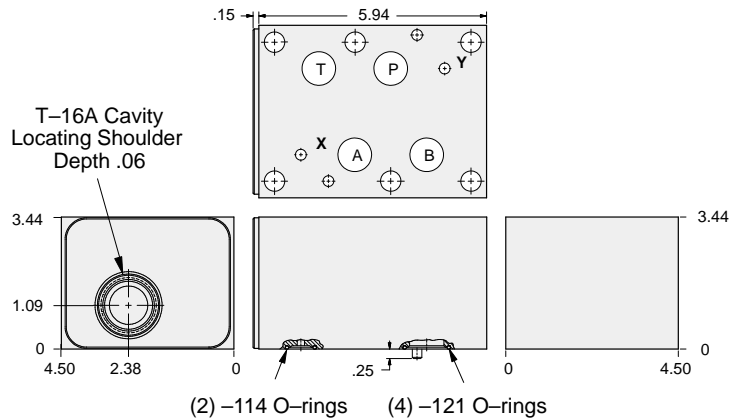
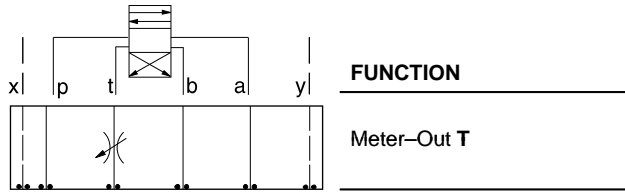


ISO 08 SANDWICH BODIES



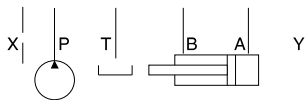
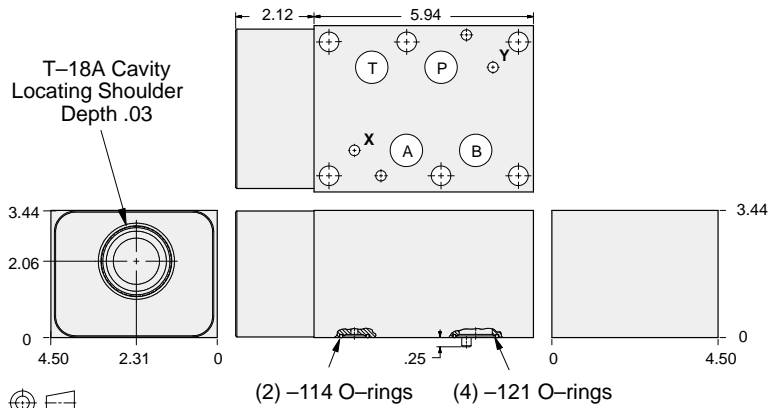
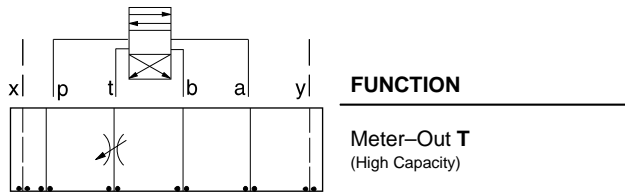
- Aluminum rated to 3000 psi and Ductile Iron rated to 5000 psi.
- See page viii for ordering cartridge/body and seals. Pressure ratings, material specifications on page xiv.

Flow Control Valves



| ALUMINUM | | DUCTILE IRON | |
|------------|------------|--------------|------------|
| Model Code | List Price | Model Code | List Price |
| IBT | | IBT/S | |

Flow Control Valves



| ALUMINUM | | DUCTILE IRON | |
|------------|------------|--------------|------------|
| Model Code | List Price | Model Code | List Price |
| IBV | | IBV/S | |

TYPICAL CARTRIDGES USED WITH BODIES SHOWN ABOVE

| | | | |
|---------------|--|--|--|
| | Fully Adjustable Needle Valve | | Fixed Orifice, Pressure-Compensated Flow Control |
| | NF*C Page 5.13 | | FX*A Page 5.21 |
| | Fully Adjustable Needle Valve with Reverse Free Flow Check | | Fixed Orifice, Pressure-Compensated Flow Control with Reverse Free Flow Check |
| | NC*B Page 5.17 | | FC*B Page 5.23 |
| | Fully Adjustable Needle Valve with Reverse Free Flow Check, Low Flow | | Fully Adjustable, Pressure-Compensated Flow Control with Reverse Free Flow Check |
| | NC*C Page 5.19 | | FD*A Page 5.25 |
| OTHER VALVES: | CN*C | | |