

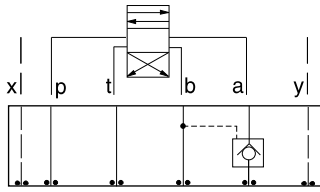


ISO 08 SANDWICH BODIES



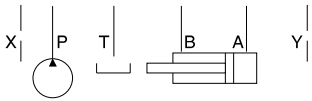
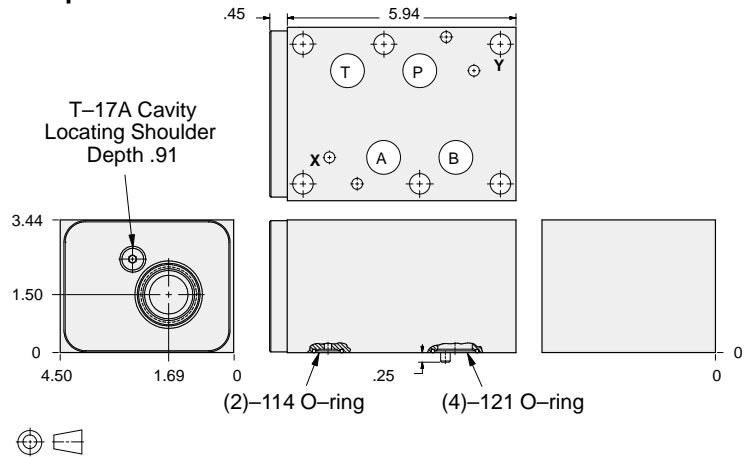
- Aluminum rated to 3000 psi and Ductile Iron rated to 5000 psi.
- See page viii for ordering cartridge/body and seals. Pressure ratings, material specifications on page xiv.

Pilot Operated Check Valves



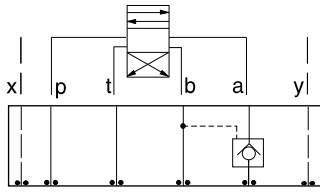
FUNCTION

On A
Pilot from B



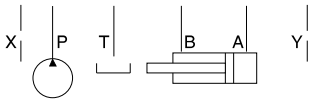
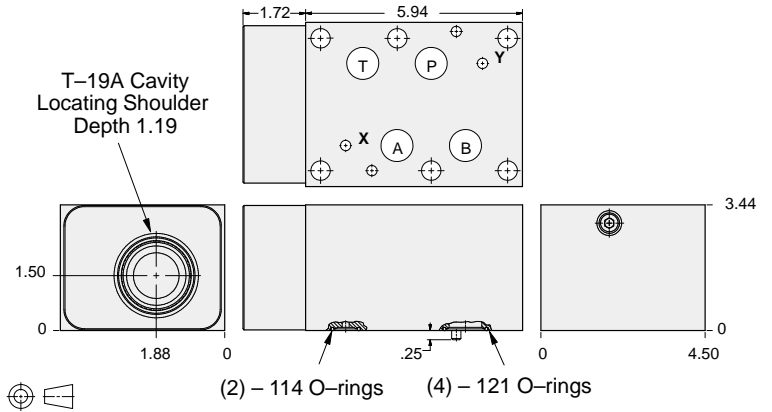
ALUMINUM		DUCTILE IRON	
Model Code	List Price	Model Code	List Price
HBL		HBL/S	

Pilot Operated Check Valves



FUNCTION

On A
Pilot from B
(High Capacity)



ALUMINUM		DUCTILE IRON	
Model Code	List Price	Model Code	List Price
HBA		HBA/S	

TYPICAL CARTRIDGES USED WITH BODIES SHOWN ABOVE

	Pilot-to-Open Check Valve, 3:1 Pilot Ratio		
	CK*B Page 4.17		
OTHER VALVES:			

08 P.O. CHECK

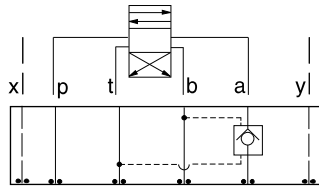


ISO 08 SANDWICH BODIES



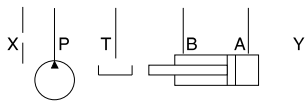
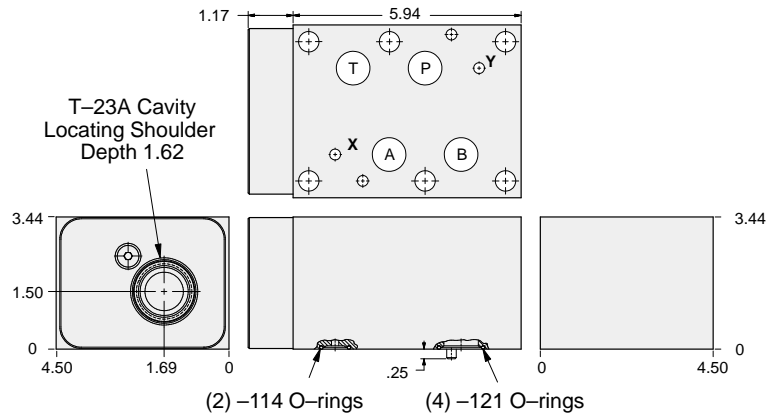
- Aluminum rated to 3000 psi and Ductile Iron rated to 5000 psi.
- See page viii for ordering cartridge/body and seals. Pressure ratings, material specifications on page xiv.

Pilot Operated Check Valves



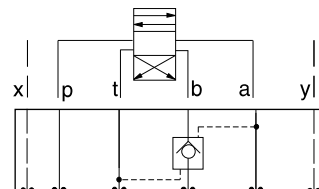
FUNCTION

On **A**
Pilot from **B**
Vent to **T**



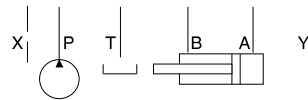
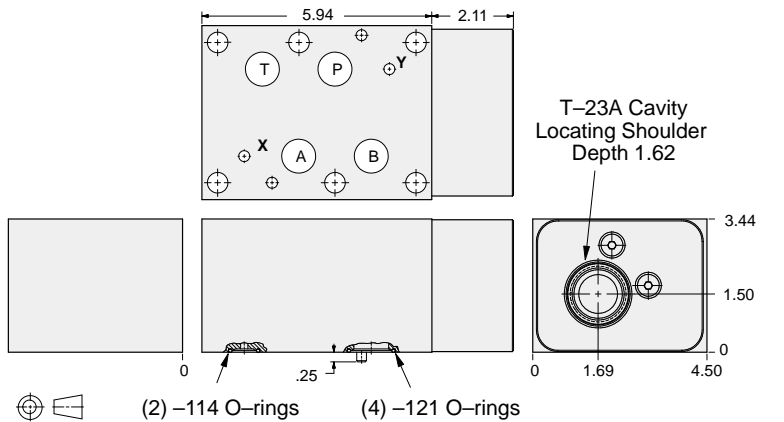
ALUMINUM		DUCTILE IRON	
Model Code	List Price	Model Code	List Price
PBA		PBA/S	

Pilot Operated Check Valves



FUNCTION

On **B**
Pilot from **A**
Vent to **T**



ALUMINUM		DUCTILE IRON	
Model Code	List Price	Model Code	List Price
PBB		PBB/S	

TYPICAL CARTRIDGES USED WITH BODIES SHOWN ABOVE

	Vented Pilot-to-Open Check Valve, 3:1 Pilot Ratio		
	CVGV Page 4.23		
OTHER VALVES:			

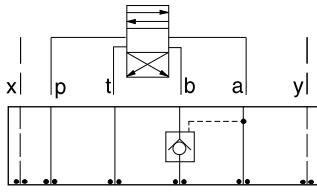


ISO 08 SANDWICH BODIES



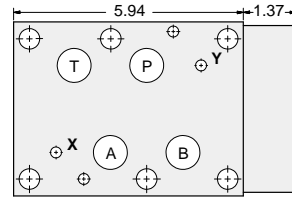
- Aluminum rated to 3000 psi and Ductile Iron rated to 5000 psi.
- See page viii for ordering cartridge/body and seals. Pressure ratings, material specifications on page xiv.

Pilot Operated Check Valves

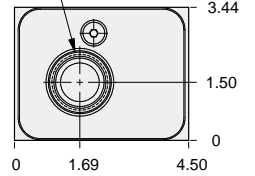
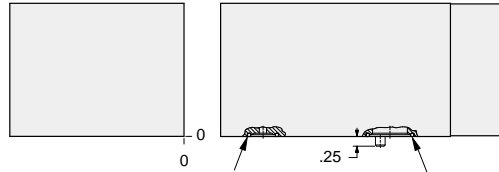


FUNCTION

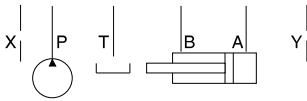
On B
Pilot from A



T-17A Cavity
Locating Shoulder
Depth .91

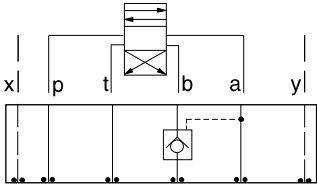


(2) - 114 O-rings (4) - 121 O-rings



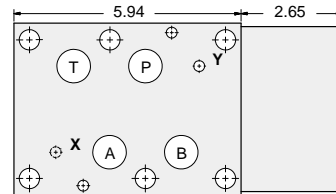
ALUMINUM		DUCTILE IRON	
Model Code	List Price	Model Code	List Price
HBM		HBM/S	

Pilot Operated Check Valves

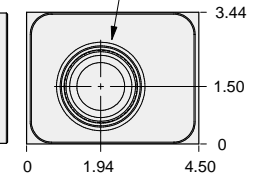
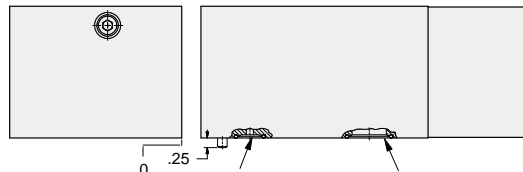


FUNCTION

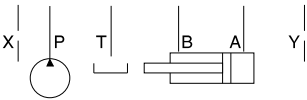
On B
Pilot from A
(High Capacity)



T-19A Cavity
Locating Shoulder
Depth 1.19



(2) - 114 O-rings (4) - 121 O-rings



ALUMINUM		DUCTILE IRON	
Model Code	List Price	Model Code	List Price
HBB		HBB/S	

TYPICAL CARTRIDGES USED WITH BODIES SHOWN ABOVE

	<i>Pilot-to-Open Check Valve, 3:1 Pilot Ratio</i>		
	CK*B Page 4.17		
OTHER VALVES:			

08 P.O. CHECK

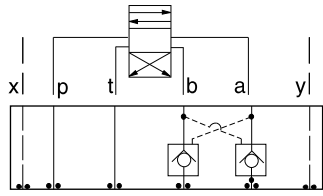


ISO 08 SANDWICH BODIES



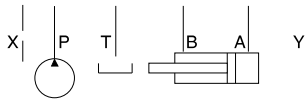
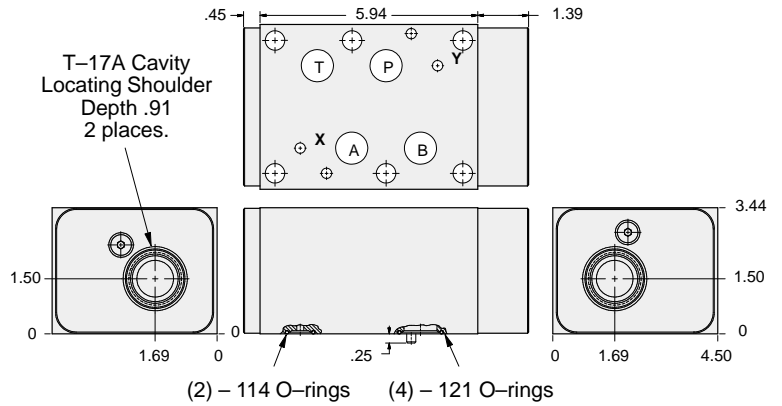
- Aluminum rated to 3000 psi and Ductile Iron rated to 5000 psi.
- See page viii for ordering cartridge/body and seals. Pressure ratings, material specifications on page xiv.

Pilot Operated Check Valves



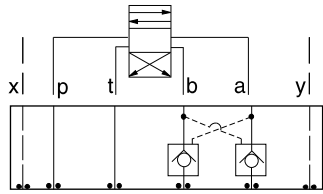
FUNCTION

On A and B
Cross-Piloted



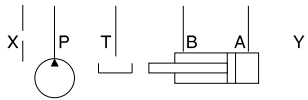
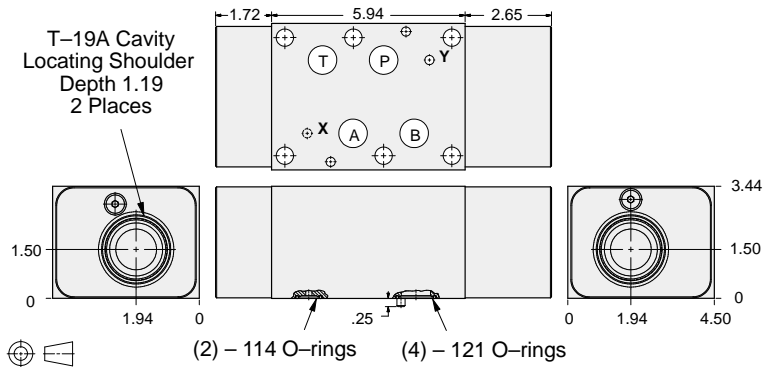
ALUMINUM		DUCTILE IRON	
Model Code	List Price	Model Code	List Price
HBN		HBNS	

Pilot Operated Check Valves



FUNCTION

On A and B
Cross-Piloted
(High Capacity)



ALUMINUM		DUCTILE IRON	
Model Code	List Price	model Code	List Price
HBV		HBVS	

TYPICAL CARTRIDGES USED WITH BODIES SHOWN ABOVE

	<i>Pilot-to-Open Check Valve, 3:1 Pilot Ratio</i>		
	CK*B Page 4.17		
OTHER VALVES:			

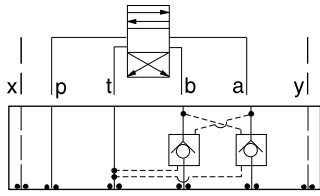


ISO 08 SANDWICH BODIES



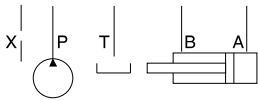
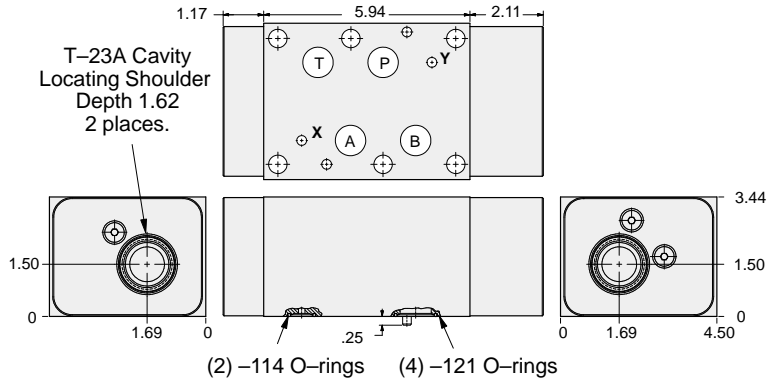
- Aluminum rated to 3000 psi and Ductile Iron rated to 5000 psi.
- See page viii for ordering cartridge/body and seals. Pressure ratings, material specifications on page xiv.

Pilot Operated Check Valves



FUNCTION

On A and B
Cross-Piloted
Vents to T



ALUMINUM		DUCTILE IRON	
Model Code	List Price	Model Code	List Price
PBY		PBY/S	

TYPICAL CARTRIDGES USED WITH BODIES SHOWN ABOVE

	Vented Pilot-to-Open Check Valve, 3:1 Pilot Ratio		
	CVGV Page 4.23		
OTHER VALVES:			

08 P.O. CHECK