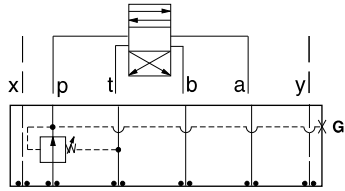




ISO 08 SANDWICH BODIES



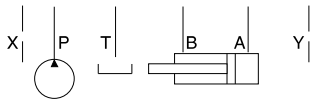
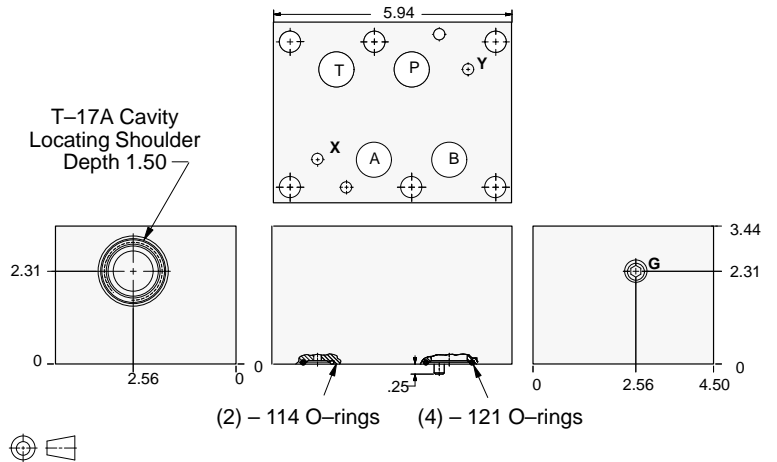
- Aluminum rated to 3000 psi and Ductile Iron rated to 5000 psi.
- See page viii for ordering cartridge/body and seals. Pressure ratings, material specifications on page xiv.



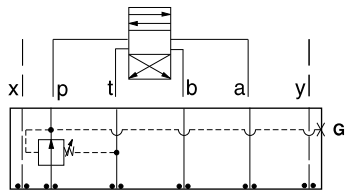
FUNCTION

On P
Drained to T

Reducing Valves



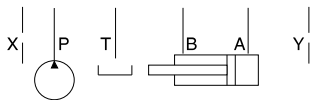
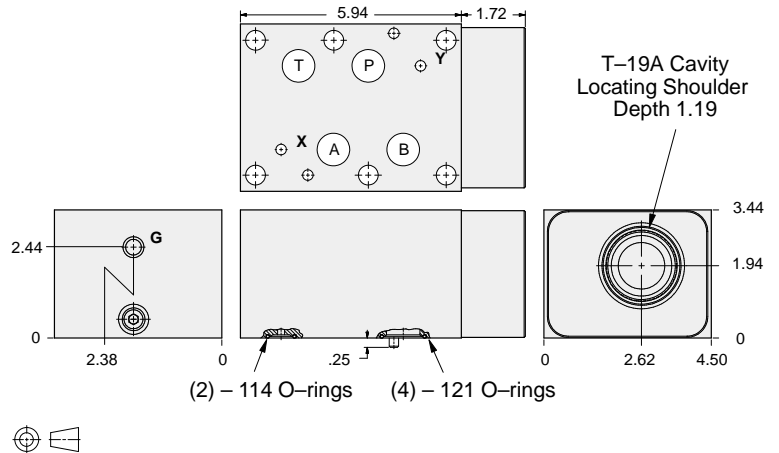
Gage Port (Plugged)	ALUMINUM		DUCTILE IRON	
	Model Code	List Price	Model Code	List Price
.25 NPTF	HBP		HBP/S	
.25 BSPP	HBP/M		HBP/T	



FUNCTION

On P
Drained to T
(High Capacity)

Reducing Valves



Gage Port (Plugged)	ALUMINUM		DUCTILE IRON	
	Model Code	List Price	Model Code	List Price
.25 NPTF	HBO		HBO/S	
.25 BSPP	HBO/M		HBO/T	

TYPICAL CARTRIDGES USED WITH BODIES SHOWN ABOVE

	Pilot Operated Reducing Valve		
	PB*B Page 3.07		
	Air Controlled, Pilot Operated Reducing Valve		
	PB*C Page 3.09		
OTHER VALVES:			

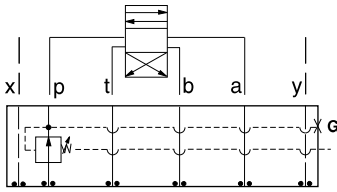


ISO 08 SANDWICH BODIES



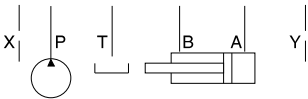
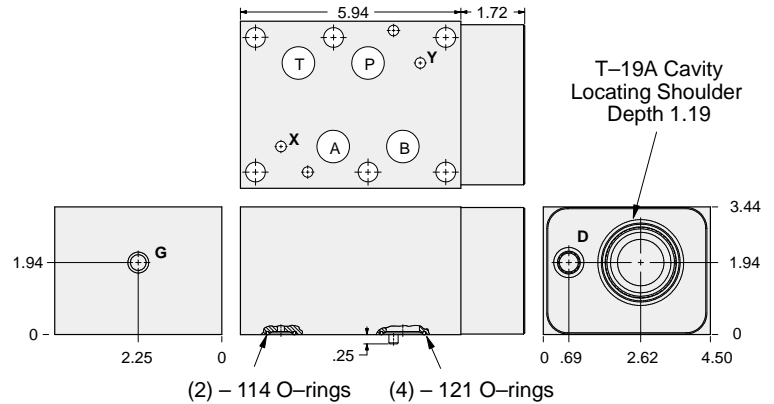
- Aluminum rated to 3000 psi and Ductile Iron rated to 5000 psi.
- See page viii for ordering cartridge/body and seals. Pressure ratings, material specifications on page xiv.

Reducing Valves



FUNCTION

On P
Drained Externally



Drain Port	Gage Port	ALUMINUM		DUCTILE IRON	
		Model Code	List Price	Model Code	List Price
SAE-6	.25 NPTF	HBQ		HBQ/S	
.25 BSPP	.25 BSPP	HBQ/M		HBQ/T	

TYPICAL CARTRIDGES USED WITH BODIES SHOWN ABOVE

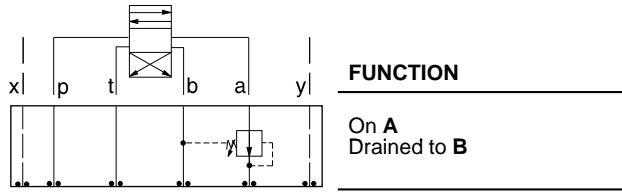
	<i>Pilot Operated Reducing Valve</i>		
	PBJB Page 3.07		
	<i>Air Controlled, Pilot Operated Reducing Valve</i>		
	PBJC Page 3.09		
OTHER VALVES:			



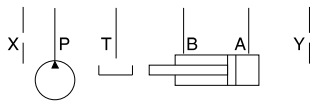
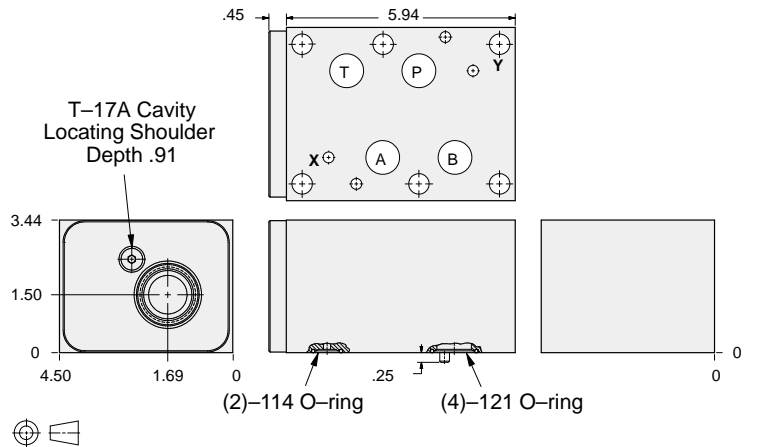
ISO 08 SANDWICH BODIES



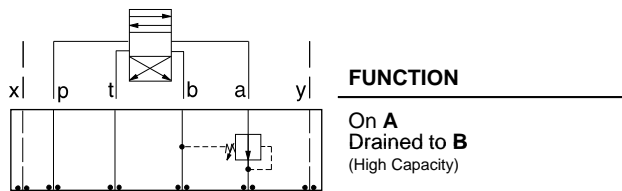
- Aluminum rated to 3000 psi and Ductile Iron rated to 5000 psi.
- See page viii for ordering cartridge/body and seals. Pressure ratings, material specifications on page xiv.



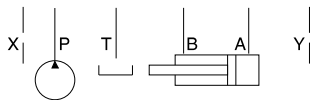
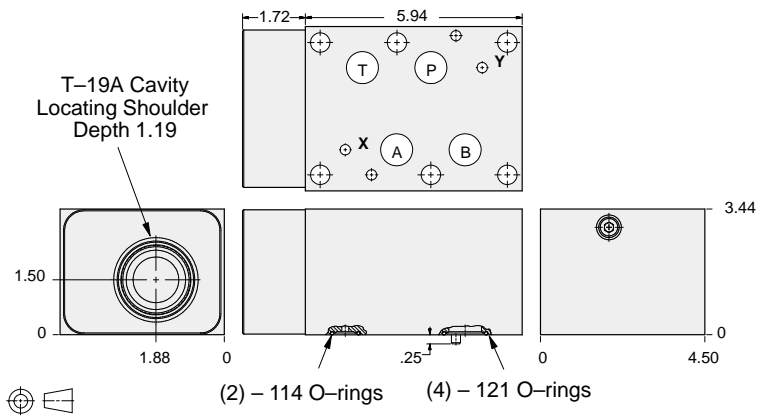
Reducing Valves



ALUMINUM		DUCTILE IRON	
Model Code	List Price	Model Code	List Price
HBL		HBL/S	



Reducing Valves



ALUMINUM		DUCTILE IRON	
Model Code	List Price	Model Code	List Price
HBA		HBA/S	

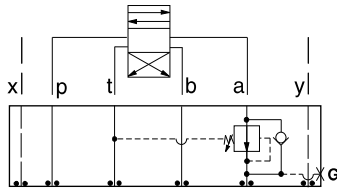
TYPICAL CARTRIDGES USED WITH BODIES SHOWN ABOVE			
	Pilot Operated Reducing Valve		
	PB*B Page 3.07		
OTHER VALVES:			



ISO 08 SANDWICH BODIES



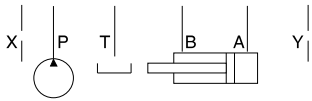
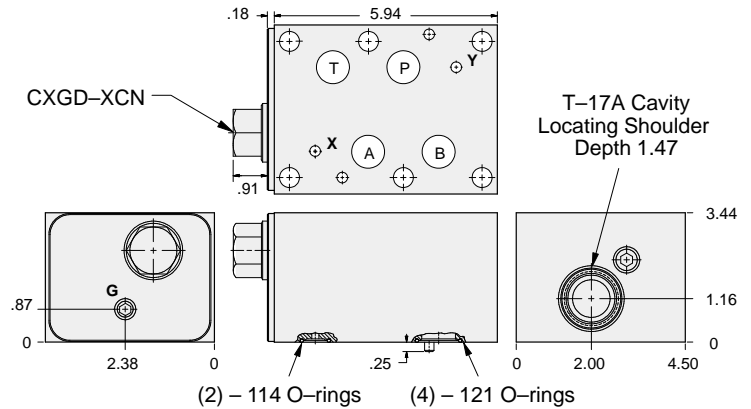
- Aluminum rated to 3000 psi and Ductile Iron rated to 5000 psi.
- See page viii for ordering cartridge/body and seals. Pressure ratings, material specifications on page xiv.



FUNCTION

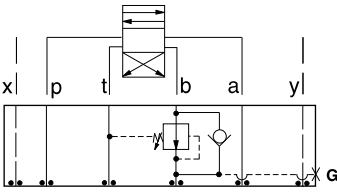
On A Drain to T
Reverse FF Check

Reducing Valves



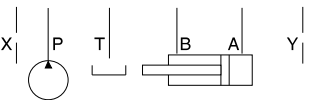
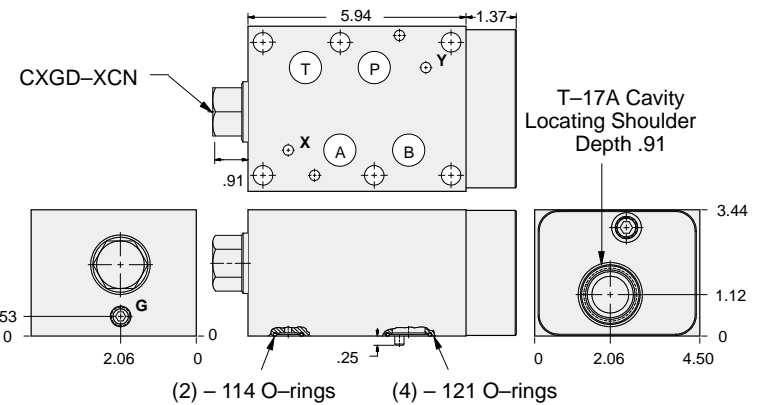
Gage Port (Plugged)	ALUMINUM		DUCTILE IRON	
	Model Code	List Price	Model Code	List Price
.25 NPTF	HBK		HBK/S	
.25 BSPP	HBK/M		HBK/T	

Reducing Valves



FUNCTION

On B Drain to T
Reverse FF Check



Gage Port (Plugged)	ALUMINUM		DUCTILE IRON	
	Model Code	List Price	Model Code	List Price
.25 NPTF	HBJ		HBJ/S	
.25 BSPP	HBJ/M		HBJ/T	

TYPICAL CARTRIDGES USED WITH BODIES SHOWN ABOVE

	Pilot Operated Reducing Valve		
	PBHB Page 3.07		
	Air Controlled, Pilot Operated Reducing Valve		
	PBHC Page 3.09		
OTHER VALVES:			

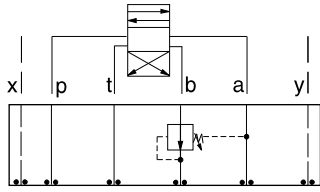


ISO 08 SANDWICH BODIES



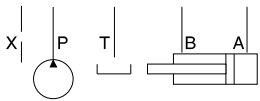
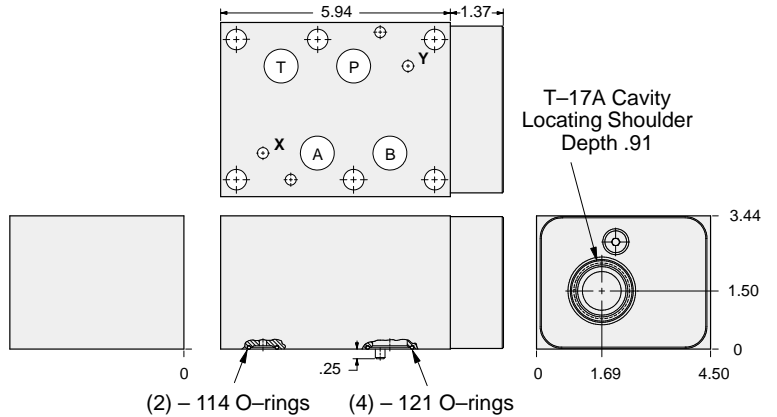
- Aluminum rated to 3000 psi and Ductile Iron rated to 5000 psi.
- See page viii for ordering cartridge/body and seals. Pressure ratings, material specifications on page xiv.

Reducing Valves



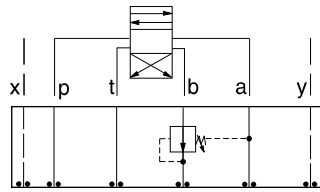
FUNCTION

On B
Drained to A



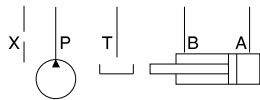
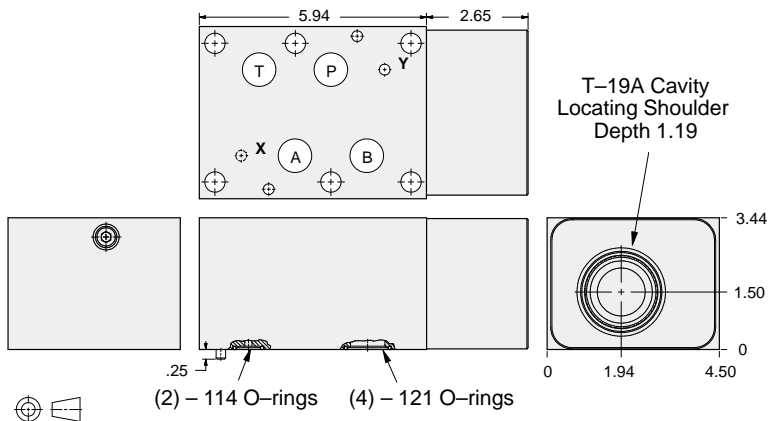
ALUMINUM		DUCTILE IRON	
Model Code	List Price	Model Code	List Price
HBM		HBM/S	

Reducing Valves



FUNCTION

On B
Drained to A
(High Capacity)



ALUMINUM		DUCTILE IRON	
Model Code	List Price	Model Code	List Price
HBB		HBB/S	

TYPICAL CARTRIDGES USED WITH BODIES SHOWN ABOVE

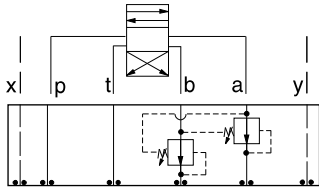
	Pilot Operated Reducing Valve		
	PB*B Page 3.07		
OTHER VALVES:			



ISO 08 SANDWICH BODIES



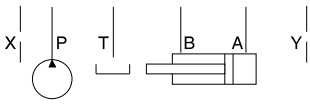
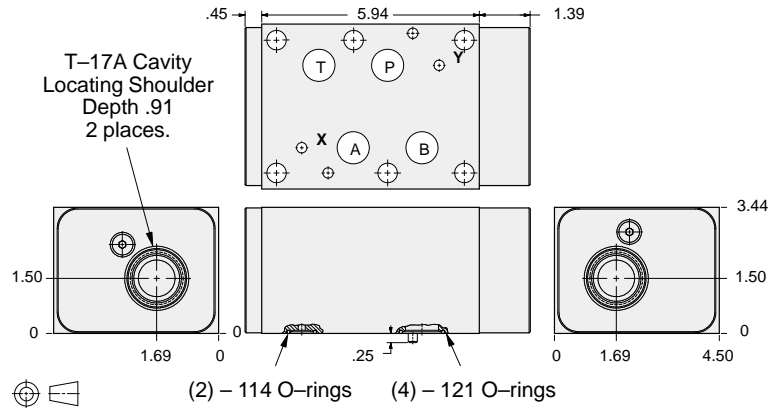
- Aluminum rated to 3000 psi and Ductile Iron rated to 5000 psi.
- See page viii for ordering cartridge/body and seals. Pressure ratings, material specifications on page xiv.



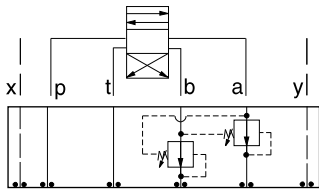
FUNCTION

On **A** and **B**
Drains to Opposite Port

Reducing Valves



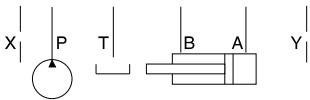
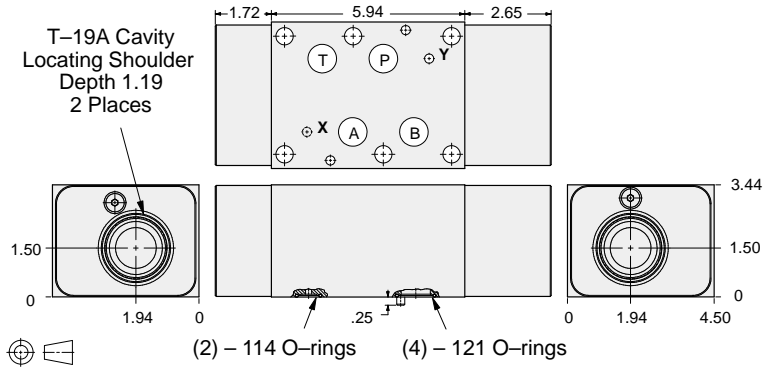
ALUMINUM		DUCTILE IRON	
Model Code	List Price	Model Code	List Price
HBN		HBNS	



FUNCTION

On **A** and **B**
Drains to Opposite Port
(High Capacity)

Reducing Valves



ALUMINUM		DUCTILE IRON	
Model Code	List Price	Model Code	List Price
HBV		HBVS	

08 REDUCING

TYPICAL CARTRIDGES USED WITH BODIES SHOWN ABOVE			
	Pilot Operated Reducing Valve		
	PB*B Page 3.07		
OTHER VALVES:			