

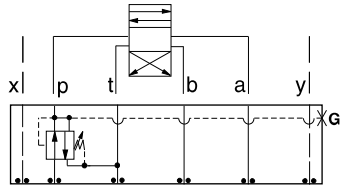


ISO 08 SANDWICH BODIES



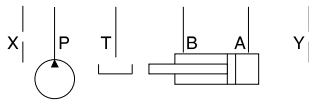
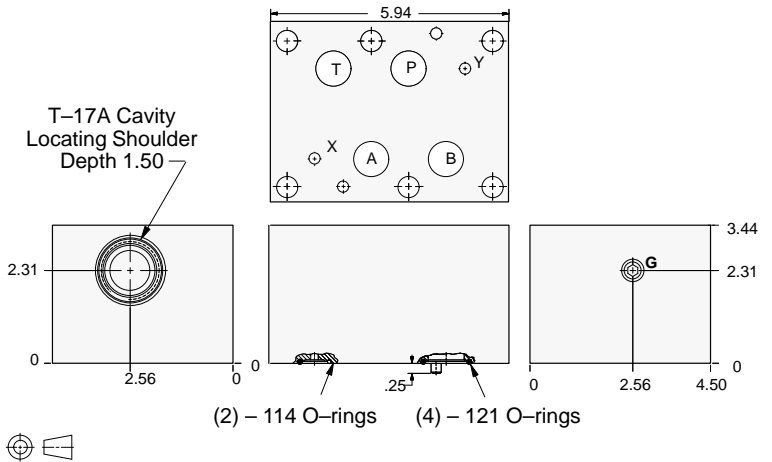
- Aluminum rated to 3000 psi and Ductile Iron rated to 5000 psi.
- See page viii for ordering cartridge/body and seals. Pressure ratings, material specifications on page xiv.

Reducing/Relieving Valves



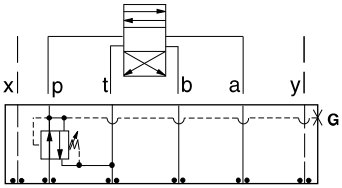
FUNCTION

On P Tank to T
Drained to T



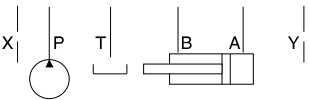
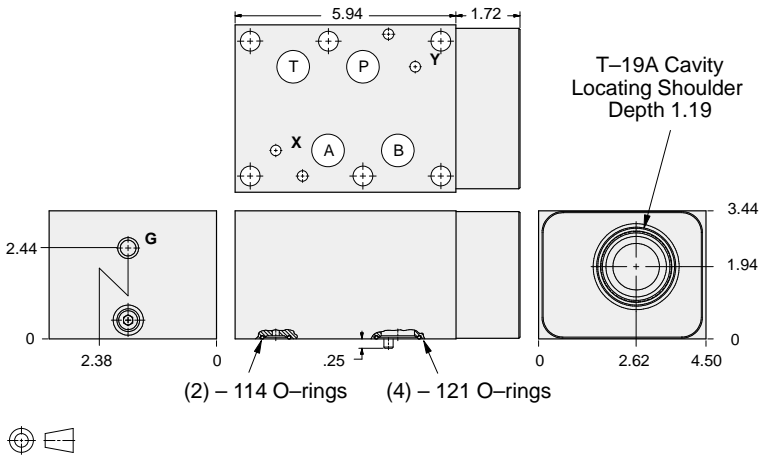
Gage Port (Plugged)	ALUMINUM		DUCTILE IRON	
	Model Code	List Price	Model Code	List Price
.25 NPTF	HBP		HBP/S	
.25 BSPP	HBP/M		HBP/T	

Reducing/Relieving Valves



FUNCTION

On P Tank to T
Drained to T
(High Capacity)



Gage Port (Plugged)	ALUMINUM		DUCTILE IRON	
	Model Code	List Price	Model Code	List Price
.25 NPTF	HBO		HBO/S	
.25 BSPP	HBO/M		HBO/T	

TYPICAL CARTRIDGES USED WITH BODIES SHOWN ABOVE

	<i>Pilot Operated Reducing/Relieving Valve</i>		
	PP*B Page 3.11		
	<i>Air Controlled, Pilot Operated Reducing/Relieving Valve</i>		
	PP*C Page 3.13		
OTHER VALVES:			

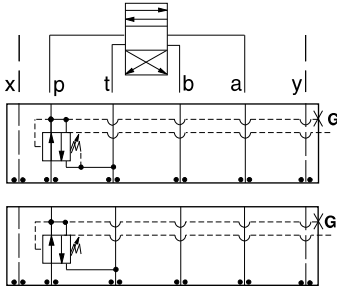


ISO 08 SANDWICH BODIES



- Aluminum rated to 3000 psi and Ductile Iron rated to 5000 psi.
- See page viii for ordering cartridge/body and seals. Pressure ratings, material specifications on page xiv.

Reducing/Relieving Valves

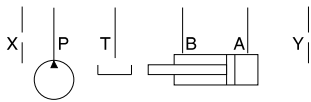
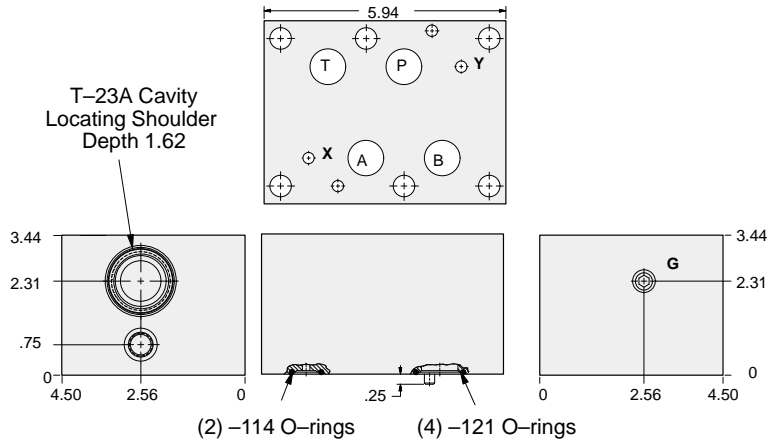


FUNCTION

On P Tank to T
Vented Externally

On P Tank to T
Drained Externally

T-23A Cavity
Locating Shoulder
Depth 1.62



External Port	Gage Port (Plugged)	ALUMINUM		DUCTILE IRON	
		Model Code	List Price	Model Code	List Price
SAE-6	.25 NPTF	PBP		PBP/S	
.25 BSPP	.25 BSPP			PBP/T	

08 REDUCING/RELIEVING

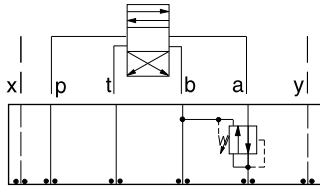
TYPICAL CARTRIDGES USED WITH BODIES SHOWN ABOVE			
	Pilot Operated Reducing/Relieving Valve with Drain Port		
	PVHA Page 3.15		
	Pilot Operated Reducing/Relieving Valve with Vent Port		
	PVHB Page 3.17		
OTHER VALVES:			



ISO 08 SANDWICH BODIES



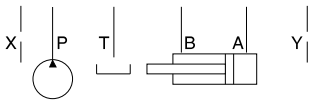
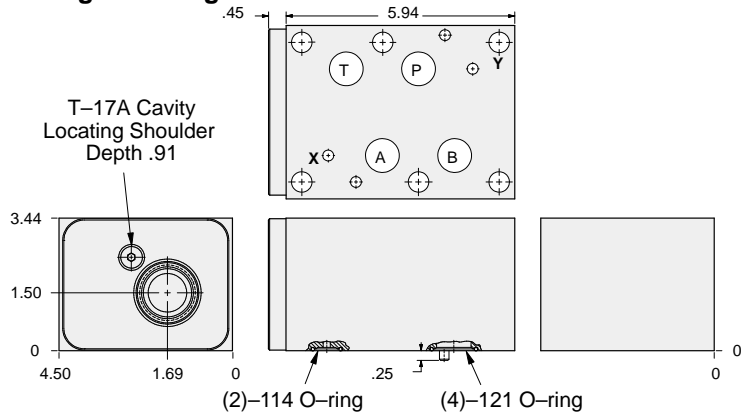
- Aluminum rated to 3000 psi and Ductile Iron rated to 5000 psi.
- See page viii for ordering cartridge/body and seals. Pressure ratings, material specifications on page xiv.



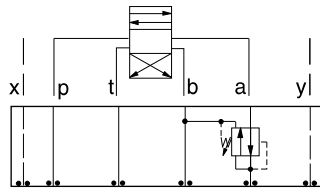
FUNCTION

On A Tank to B
Drained to B

Reducing/Relieving Valves



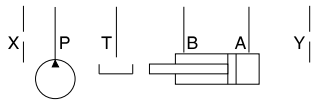
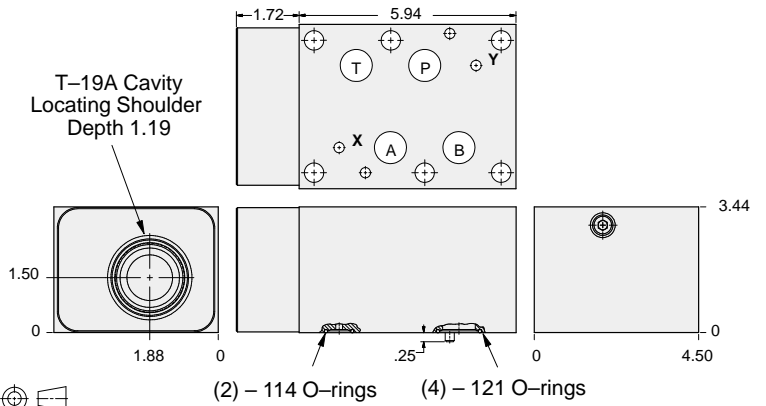
ALUMINUM		DUCTILE IRON	
Model Code	List Price	Model Code	List Price
HBL		HBL/S	



FUNCTION

On A Tank to B
Drained to B
(High Capacity)

Reducing/Relieving Valves



ALUMINUM		DUCTILE IRON	
Model Code	List Price	Model Code	List Price
HBA		HBA/S	

TYPICAL CARTRIDGES USED WITH BODIES SHOWN ABOVE			
	Pilot Operated Reducing/Relieving Valve		
	PP*B Page 3.11		
OTHER VALVES:			

08 REDUCING/RELIEVING

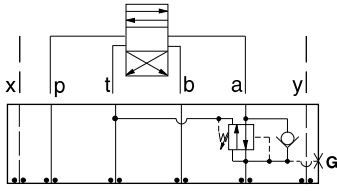


ISO 08 SANDWICH BODIES



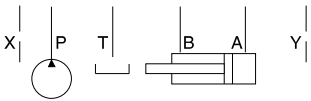
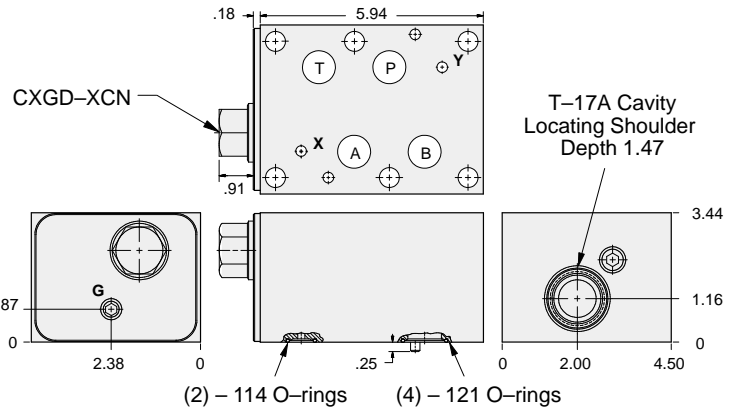
- Aluminum rated to 3000 psi and Ductile Iron rated to 5000 psi.
- See page viii for ordering cartridge/body and seals. Pressure ratings, material specifications on page xiv.

Reducing/Relieving Valves



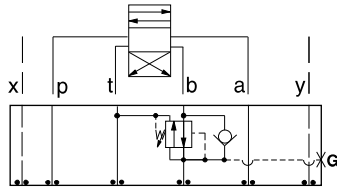
FUNCTION

On **A** Tank to **T**
Drained to **T**
Reverse FF Check



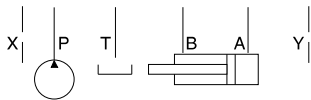
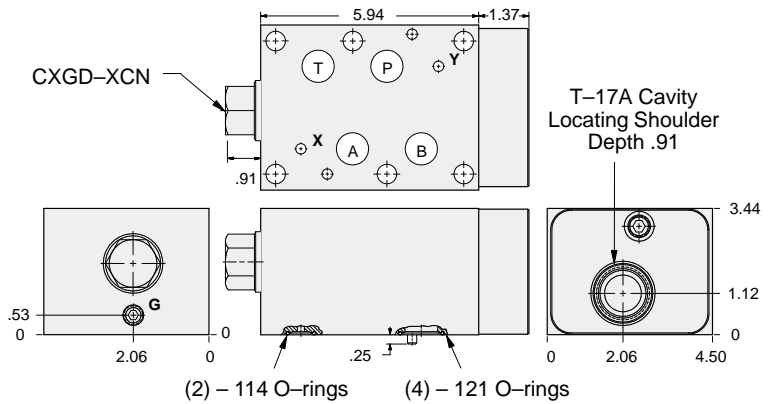
Gage Port (Plugged)	ALUMINUM		DUCTILE IRON	
	Model Code	List Price	Model Code	List Price
.25 NPTF	HBK		HBK/S	
.25 BSPP	HBK/M		HBK/T	

Reducing/Relieving Valves



FUNCTION

On **B** Tank to **T**
Drained to **T**
Reverse FF Check



Gage Port (Plugged)	ALUMINUM		DUCTILE IRON	
	Model Code	List Price	Model Code	List Price
.25 NPTF	HBJ		HBJ/S	
.25 BSPP	HBJ/M		HBJ/T	

08 REDUCING/RELIEVING

TYPICAL CARTRIDGES USED WITH BODIES SHOWN ABOVE

	Pilot Operated Reducing/Relieving Valve PPHB Page 3.11		
	Air Controlled, Pilot Operated Reducing/Relieving Valve PPHC Page 3.13		
OTHER VALVES:			

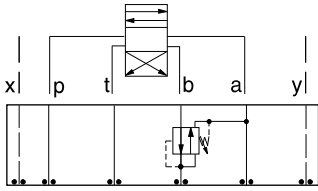


ISO 08 SANDWICH BODIES



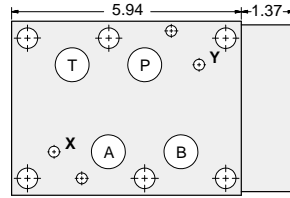
- Aluminum rated to 3000 psi and Ductile Iron rated to 5000 psi.
- See page viii for ordering cartridge/body and seals. Pressure ratings, material specifications on page xiv.

Reducing/Relieving Valves

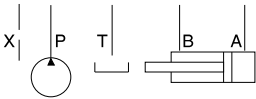
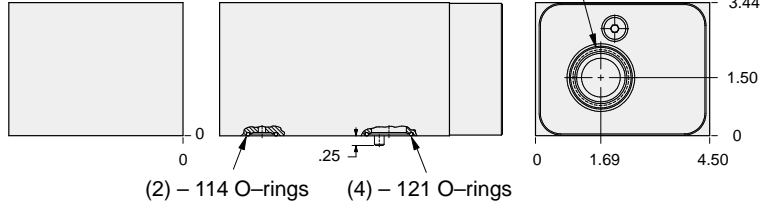


FUNCTION

On B Tank to A
Drained to A

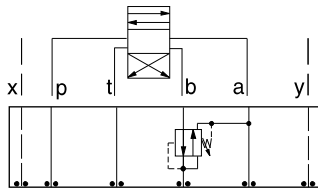


T-17A Cavity
Locating Shoulder
Depth .91



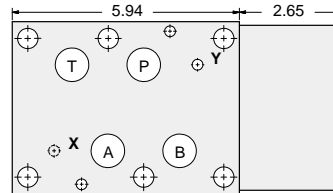
ALUMINUM		DUCTILE IRON	
Model Code	List Price	Model Code	List Price
HBM		HBM/S	

Reducing/Relieving Valves

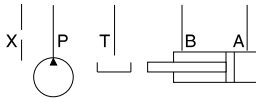
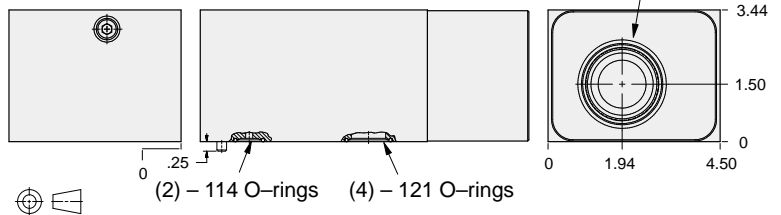


FUNCTION

On B Tank to A
(High Capacity)
Drained to A



T-19A Cavity
Locating Shoulder
Depth 1.19



ALUMINUM		DUCTILE IRON	
Model Code	List Price	Model Code	List Price
HBB		HBB/S	

TYPICAL CARTRIDGES USED WITH BODIES SHOWN ABOVE

	Pilot Operated Reducing/Relieving Valve		
	PP*B Page 3.11		
OTHER VALVES:			

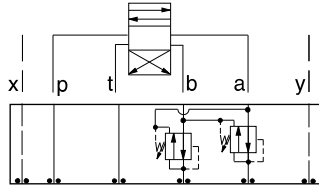


ISO 08 SANDWICH BODIES



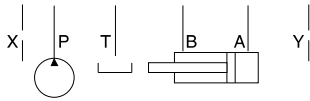
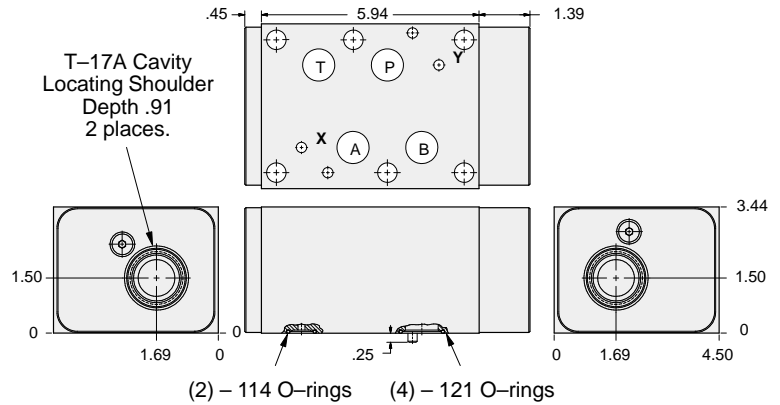
- Aluminum rated to 3000 psi and Ductile Iron rated to 5000 psi.
- See page viii for ordering cartridge/body and seals. Pressure ratings, material specifications on page xiv.

Reducing/Relieving Valves



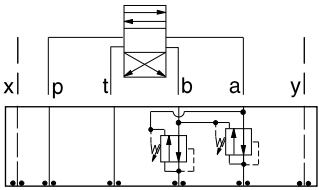
FUNCTION

On **A** and **B**
Tanks and Drains to
Opposite Port



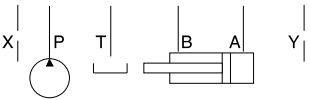
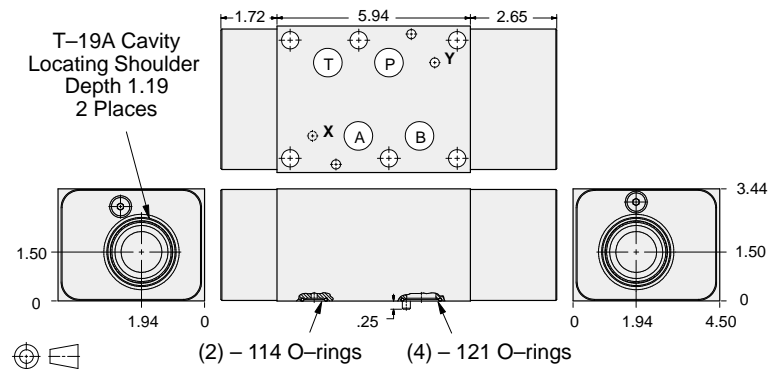
ALUMINUM		DUCTILE IRON	
Model Code	List Price	Model Code	List Price
HBN		HBNS	

Reducing/Relieving Valves



FUNCTION

On **A** and **B**
Tanks and Drains to
Opposite Port
(High Capacity)



ALUMINUM		DUCTILE IRON	
Model Code	List Price	Model Code	List Price
HBV		HBVS	

08 REDUCING/RELIEVING

TYPICAL CARTRIDGES USED WITH BODIES SHOWN ABOVE

	Pilot Operated Reducing/Relieving Valve		
	PP*B Page 3.11		
OTHER VALVES:			