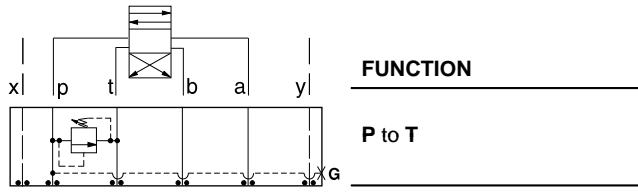




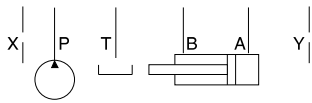
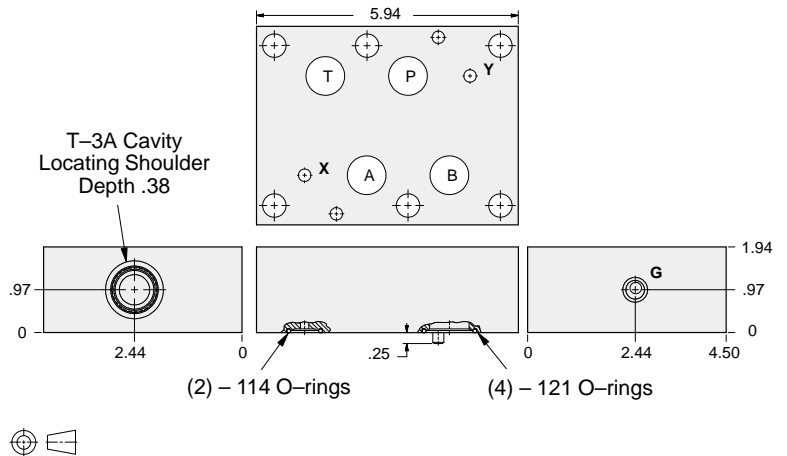
ISO 08 SANDWICH BODIES



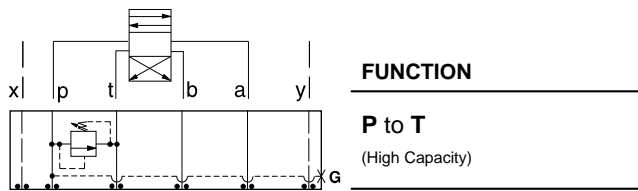
- Aluminum rated to 3000 psi and Ductile Iron rated to 5000 psi.
- See page viii for ordering cartridge/body and seals. Pressure ratings, material specifications on page xiv.



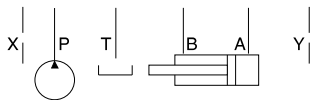
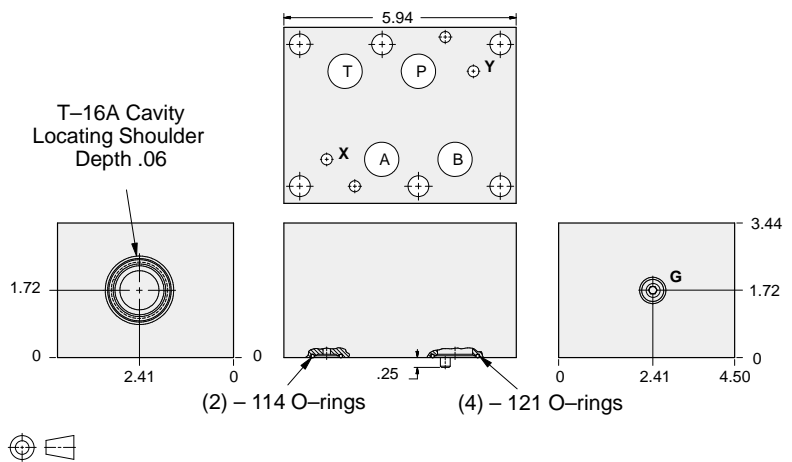
Relief Valves



Gage Port (Plugged)	ALUMINUM		DUCTILE IRON	
	Model Code	List Price	Model Code	List Price
.25 NPTF	CDP		CDP/S	
.25 BSPP	CDP/M		CDP/T	



Relief Valves



Gage Port (Plugged)	ALUMINUM		DUCTILE IRON	
	Model Code	List Price	Model Code	List Price
.25 NPTF	CDO		CDO/S	
.25 BSPP	CDO/M		CDO/T	

TYPICAL CARTRIDGES USED WITH BODIES SHOWN ABOVE

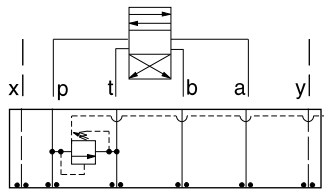
	<i>Pilot Operated Relief Valve</i> RP*C Page 1.06, 1.07		<i>Pilot Operated "Kick-Down" Relief Valve</i> RQ*B Page 1.12, 1.13
	<i>Pilot Operated, Rapid Response Relief Valve</i> RP*E Page 1.08, 1.09		<i>Air Controlled, Pilot Operated Relief Valve</i> RP*D Page 1.14, 1.15
	<i>Direct Acting Relief Valve</i> RD*A Page 1.10, 1.11		
OTHER VALVES:			



ISO 08 SANDWICH BODIES



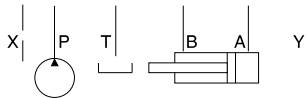
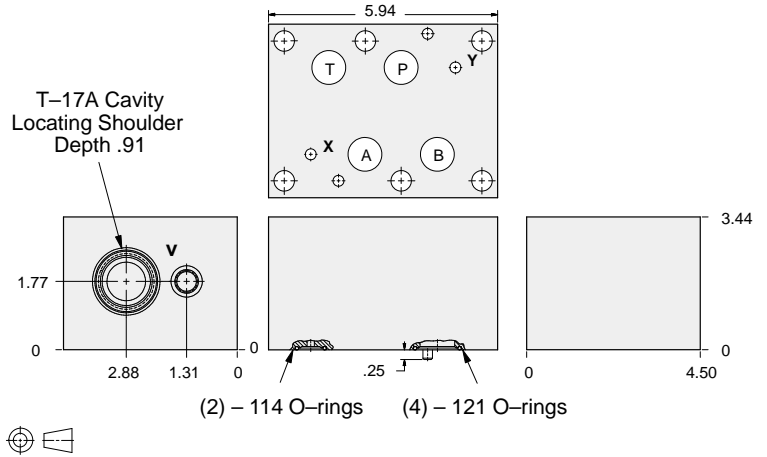
- Aluminum rated to 3000 psi and Ductile Iron rated to 5000 psi.
- See page viii for ordering cartridge/body and seals. Pressure ratings, material specifications on page xiv.



FUNCTION

P to T
Externally Vented

Relief Valves



Vent Port	ALUMINUM		DUCTILE IRON	
	Model Code	List Price	Model Code	List Price
SAE-6	HBV		HBV/S	
.25 BSPP	HBV/M		HBV/T	

08 RELIEF

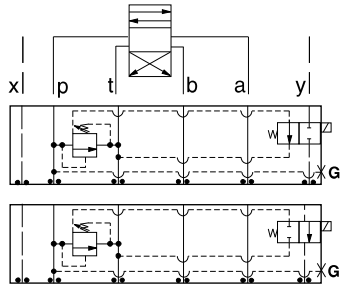
TYPICAL CARTRIDGES USED WITH BODIES SHOWN ABOVE			
	Pilot Operated Vented Relief Valve		
	RVGA Page 1.19		
OTHER VALVES:			



ISO 08 SANDWICH BODIES



- Aluminum rated to 3000 psi and Ductile Iron rated to 5000 psi.
- See page viii for ordering cartridge/body and seals. Pressure ratings, material specifications on page xiv.

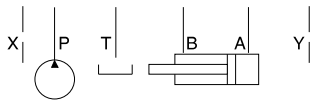
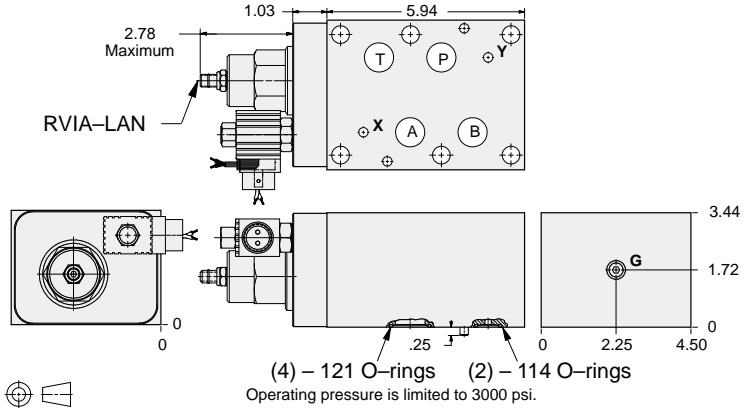


FUNCTION

P to T
N.O. Solenoid
Vented*

P to T
N.C. Solenoid
Vented*

Relief Valves



Solenoid Type	Gage Port (Plugged)	ALUMINUM		DUCTILE IRON	
		Model Code	List Price	Model Code	List Price
N.O.	.25 NPTF	YRHI-LAN-*A		YRHI-LAN-*A/S	
N.O.	.25 BSPP	YRHI-LAN-*A/M		YRHI-LAN-*A/T	
N.C.	.25 NPTF	YRHJ-LAN-*A		YRHJ-LAN-*A/S	
N.C.	.25 BSPP	YRHJ-LAN-*A/M		YRHJ-LAN-*A/T	

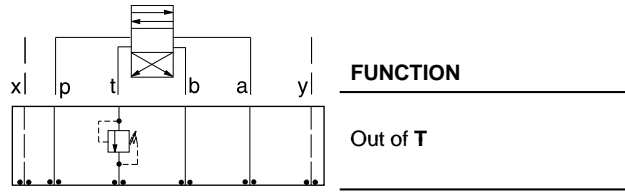
* Select solenoid connection/voltage option from page 14.16 and add option price to List Price.



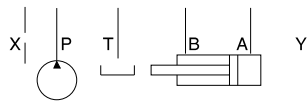
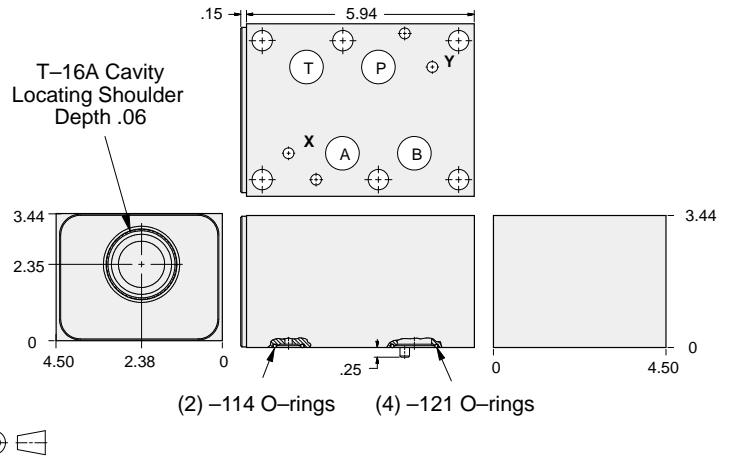
ISO 08 SANDWICH BODIES



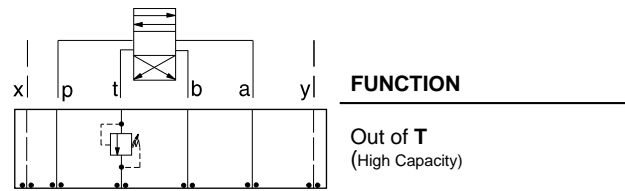
- Aluminum rated to 3000 psi and Ductile Iron rated to 5000 psi.
- See page viii for ordering cartridge/body and seals. Pressure ratings, material specifications on page xiv.



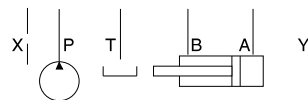
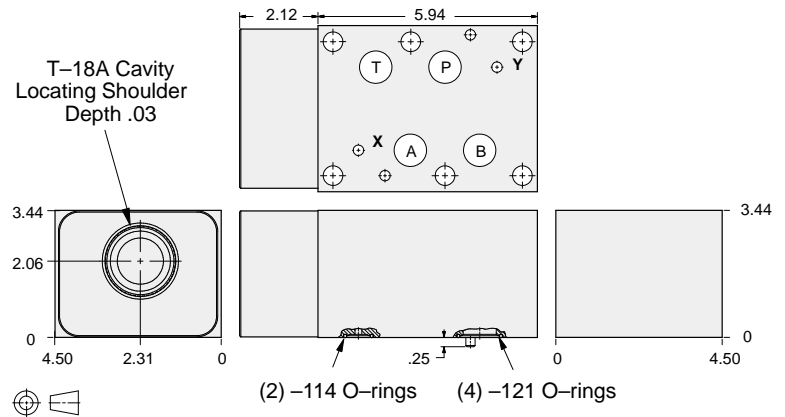
Relief Valves



ALUMINUM		DUCTILE IRON	
Model Code	List Price	Model Code	List Price
IBT		IBT/S	



Relief Valves



ALUMINUM		DUCTILE IRON	
Model Code	List Price	Model Code	List Price
IBV		IBV/S	

TYPICAL CARTRIDGES USED WITH BODIES SHOWN ABOVE

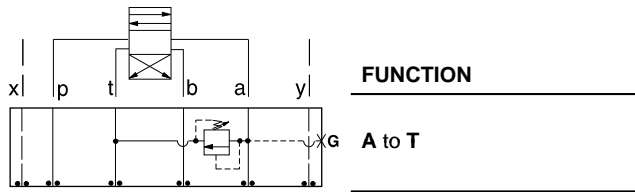
	Pilot Operated Relief Valve		Pilot Operated "Kick-Down" Relief Valve
	RP*C Page 1.07		RQ*B Page 1.13
	Pilot Operated, Rapid Response Relief Valve		Air Controlled, Pilot Operated Relief Valve
	RP*E Page 1.09		RP*D Page 1.15
	Direct Acting Relief Valve		
	RD*A Page 1.11		
OTHER VALVES:			



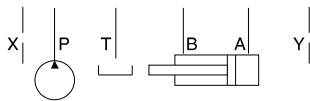
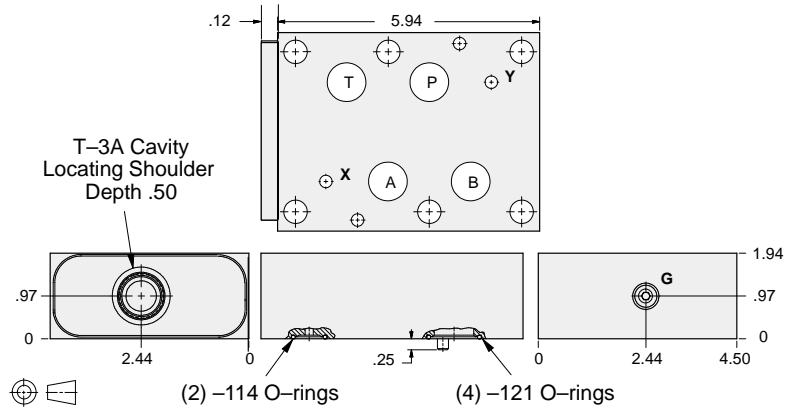
ISO 08 SANDWICH BODIES



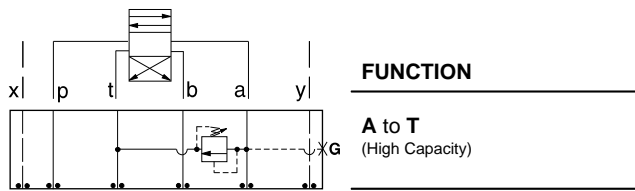
- Aluminum rated to 3000 psi and Ductile Iron rated to 5000 psi.
- See page viii for ordering cartridge/body and seals. Pressure ratings, material specifications on page xiv.



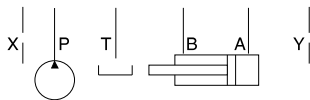
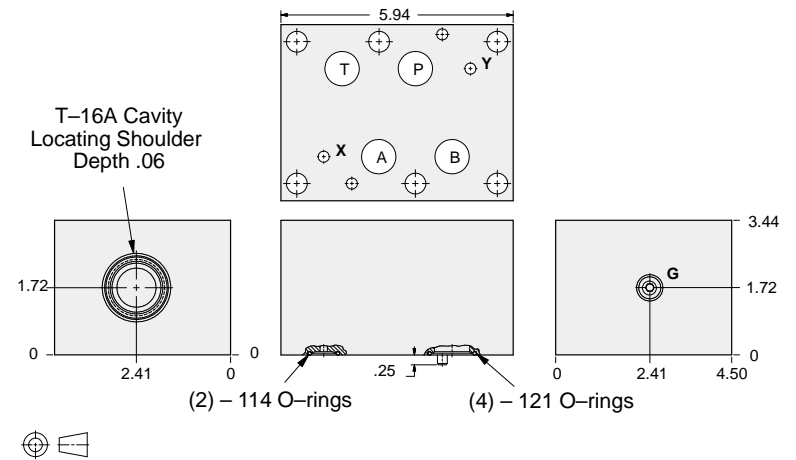
Relief Valves



Gauge Port (Plugged)	ALUMINUM		DUCTILE IRON	
	Model Code	List Price	Model Code	List Price
.25 NPTF	CDA		CDA/S	
.25 BSPP	CDA/M		CDA/T	



Relief Valves



Gauge Port (Plugged)	ALUMINUM		DUCTILE IRON	
	Model Code	List Price	Model Code	List Price
.25 NPTF	CDC		CDC/S	
.25 BSPP	CDC/M		CDC/T	

TYPICAL CARTRIDGES USED WITH BODIES SHOWN ABOVE

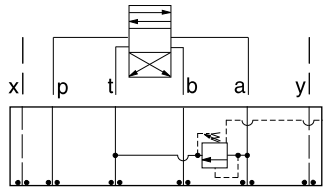
	Pilot Operated Relief Valve RP*C Page 1.06, 1.07		Pilot Operated "Kick-Down" Relief Valve RQ*B Page 1.12, 1.13
	Pilot Operated, Rapid Response Relief Valve RP*E Page 1.08, 1.09		Air Controlled, Pilot Operated Relief Valve RP*D Page 1.14, 1.15
	Direct Acting Relief Valve RD*A Page 1.10, 1.11		
OTHER VALVES:			



ISO 08 SANDWICH BODIES



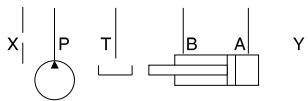
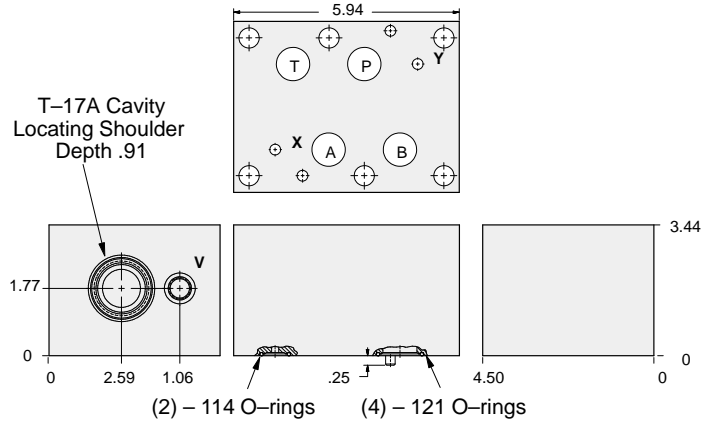
- Aluminum rated to 3000 psi and Ductile Iron rated to 5000 psi.
- See page viii for ordering cartridge/body and seals. Pressure ratings, material specifications on page xiv.



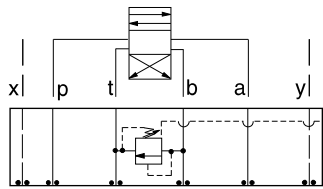
FUNCTION

A to T
Externally Vented

Relief Valves



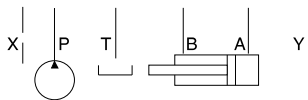
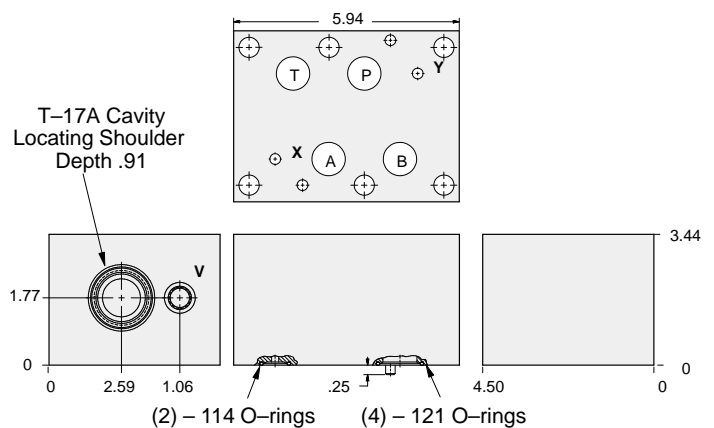
Vent Port	ALUMINUM		DUCTILE IRON	
	Model Code	List Price	Model Code	List Price
SAE-6	HBE		HBE/S	
.25 BSPP	HBE/M		HBE/T	



FUNCTION

B to T
Externally Vented

Relief Valves



Vent Port	ALUMINUM		DUCTILE IRON	
	Model Code	List Price	Part Number	List Price
SAE-6	HBF		HBF/S	
.25 BSPP	HBF/M		HBF/T	

TYPICAL CARTRIDGES USED WITH BODIES SHOWN ABOVE

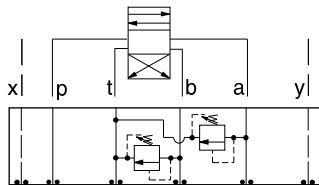
	Pilot Operated Vented Relief Valve		
	RVGA Page 1.19		
OTHER VALVES:			



ISO 08 SANDWICH BODIES



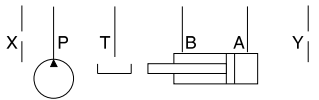
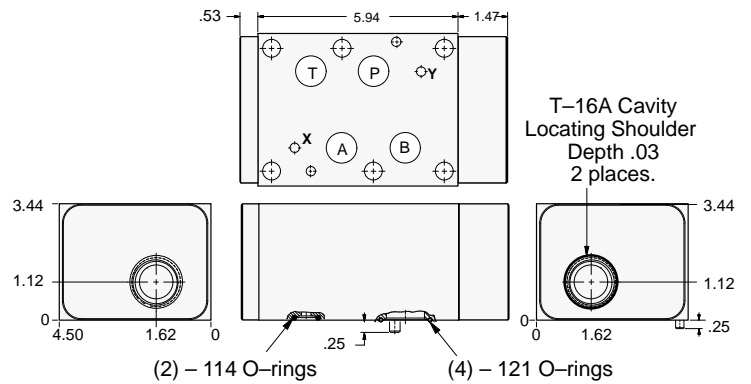
- Aluminum rated to 3000 psi and Ductile Iron rated to 5000 psi.
- See page viii for ordering cartridge/body and seals. Pressure ratings, material specifications on page xiv.



FUNCTION

A and B to T
(High Capacity)

Relief Valves



ALUMINUM		DUCTILE IRON	
Model Code	List Price	Model Code	List Price
CDZ		CDZ/S	

TYPICAL CARTRIDGES USED WITH BODIES SHOWN ABOVE			
	Pilot Operated Relief Valve		Pilot Operated "Kick-Down" Relief Valve
	RPIC Page 1.07		RQIB Page 1.13
	Pilot Operated, Rapid Response Relief Valve		Air Controlled, Pilot Operated Relief Valve
	RPIE Page 1.09		RPID Page 1.15
	Direct Acting Relief Valve		
	RDHA Page 1.11		
OTHER VALVES:			

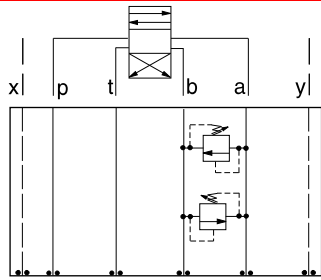
08 RELIEF



ISO 08 SANDWICH BODIES



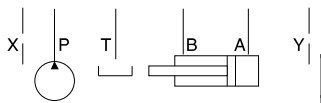
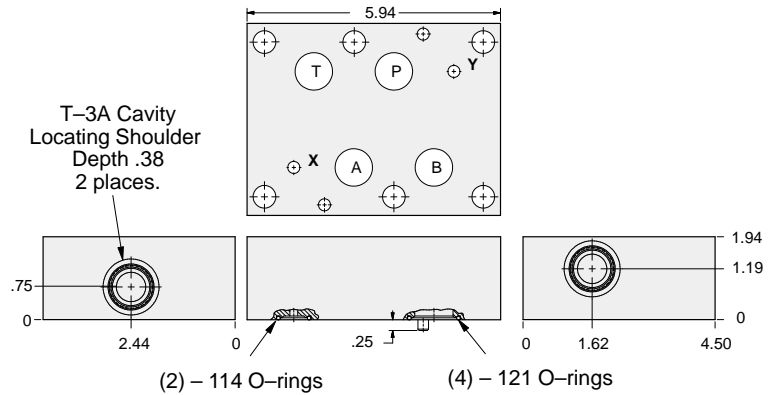
- Aluminum rated to 3000 psi and Ductile Iron rated to 5000 psi.
- See page viii for ordering cartridge/body and seals. Pressure ratings, material specifications on page xiv.



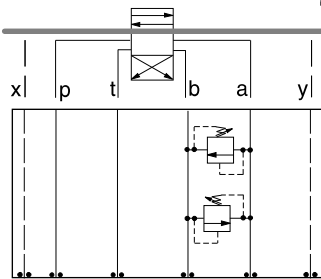
FUNCTION

A to B and B to A
(Cross-Port)

Relief Valves



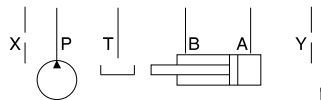
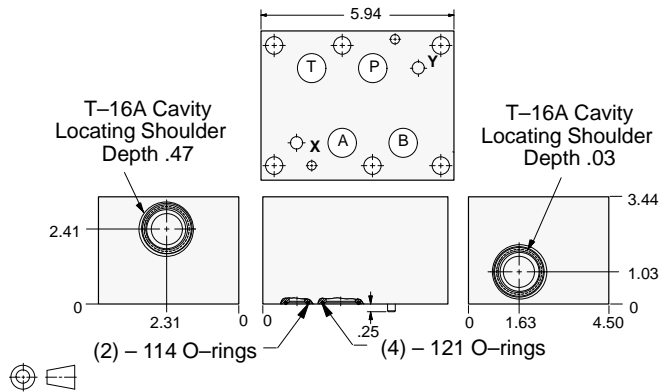
ALUMINUM		DUCTILE IRON	
Model Code	List Price	Model Code	List Price
CDY		CDYS	



FUNCTION

A to B and B to A
(High Capacity)
(Cross-Port)

Relief Valves



ALUMINUM		DUCTILE IRON	
Model Code	List Price	Model Code	List Price
CDW		CDWS	

TYPICAL CARTRIDGES USED WITH BODIES SHOWN ABOVE

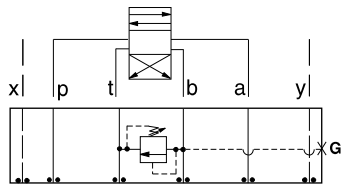
	<i>Pilot Operated Relief Valve</i>		<i>Pilot Operated "Kick-Down" Relief Valve</i>
	RP*C Page 1.06, 1.07		RQ*B Page 1.12, 1.13
	<i>Pilot Operated, Rapid Response Relief Valve</i>		<i>Air Controlled, Pilot Operated Relief Valve</i>
	RP*E Page 1.08, 1.09		RP*D Page 1.14, 1.15
	<i>Direct Acting Relief Valve</i>		
	RD*A Page 1.10, 1.11		
OTHER VALVES:			



ISO 08 SANDWICH BODIES



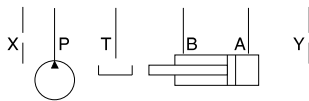
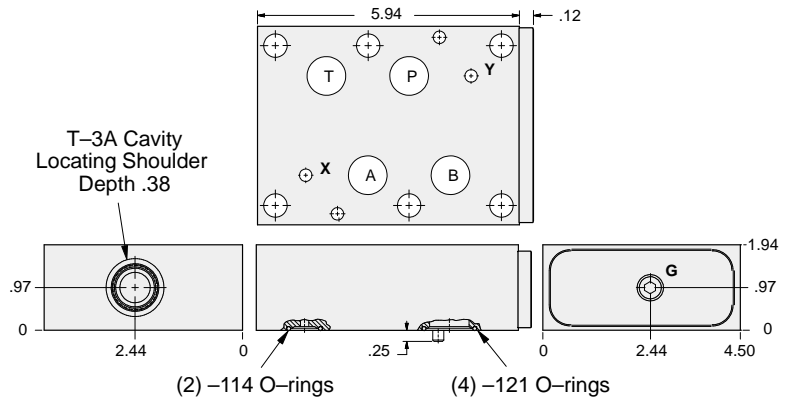
- Aluminum rated to 3000 psi and Ductile Iron rated to 5000 psi.
- See page viii for ordering cartridge/body and seals. Pressure ratings, material specifications on page xiv.



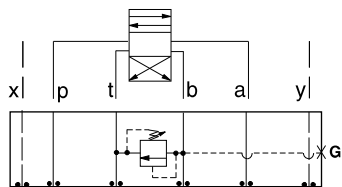
FUNCTION

B to T

Relief Valves



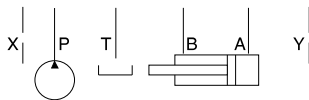
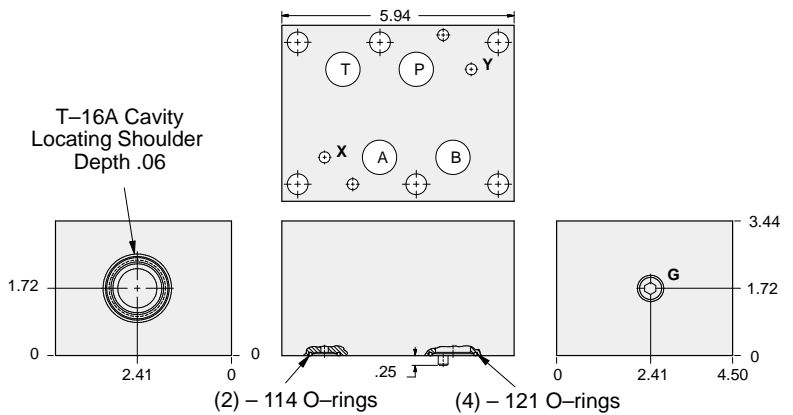
Gauge Port (Plugged)	ALUMINUM		DUCTILE IRON	
	Model Code	List Price	Model Code	List Price
.25 NPTF	CDB		CDB/S	
.25 BSPP	CDB/M		CDB/T	



FUNCTION

B to T
(High Capacity)

Relief Valves



Gauge Port (Plugged)	ALUMINUM		DUCTILE IRON	
	Model Code	List Price	Model Code	List Price
.25 NPTF	CDD		CDD/S	
.25 BSPP	CDD/M		CDD/T	

TYPICAL CARTRIDGES USED WITH BODIES SHOWN ABOVE

	<i>Pilot Operated Relief Valve</i> RP*C Page 1.06, 1.07		<i>Pilot Operated "Kick-Down" Relief Valve</i> RQ*B Page 1.12, 1.13
	<i>Pilot Operated, Rapid Response Relief Valve</i> RP*E Page 1.08, 1.09		<i>Air Controlled, Pilot Operated Relief Valve</i> RP*D Page 1.14, 1.15
	<i>Direct Acting Relief Valve</i> RD*A Page 1.10, 1.11		
OTHER VALVES:			

08 RELIEF