

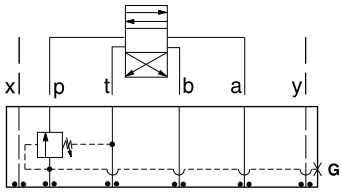


# ISO 08 SANDWICH BODIES



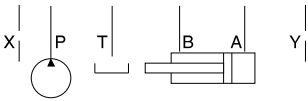
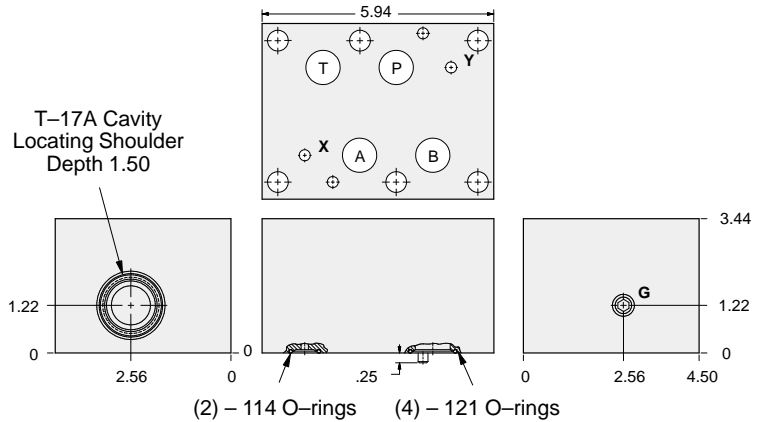
- Aluminum rated to 3000 psi and Ductile Iron rated to 5000 psi.
- See page viii for ordering cartridge/body and seals. Pressure ratings, material specifications on page xiv.

## Sequence Valves



**FUNCTION**

In to P



Gage Port (Plugged)	ALUMINUM		DUCTILE IRON	
	Model Code	List Price	Model Code	List Price
.25 NPTF	<b>HBW</b>		<b>HBW/S</b>	
.25 BSPP	<b>HBW/M</b>		<b>HBW/T</b>	

08 SEQUENCE

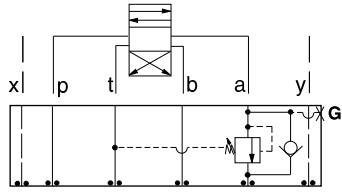
TYPICAL CARTRIDGES USED WITH BODIES SHOWN ABOVE			
	<i>Pilot Operated Sequence Valve</i>		<i>Direct Acting Sequence Valve with Reverse Free Flow Check</i>
	<b>RSHC Page 2.07</b>		<b>SCGA Page 2.13</b>
	<i>Pilot Operated "Kick-Down" Sequence Valve</i>		
	<b>SQHB Page 2.09</b>		
	<i>Air Controlled, Pilot Operated Sequence Valve</i>		
	<b>RSHE Page 2.11</b>		
<b>OTHER VALVES:</b>			



# ISO 08 SANDWICH BODIES



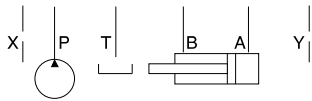
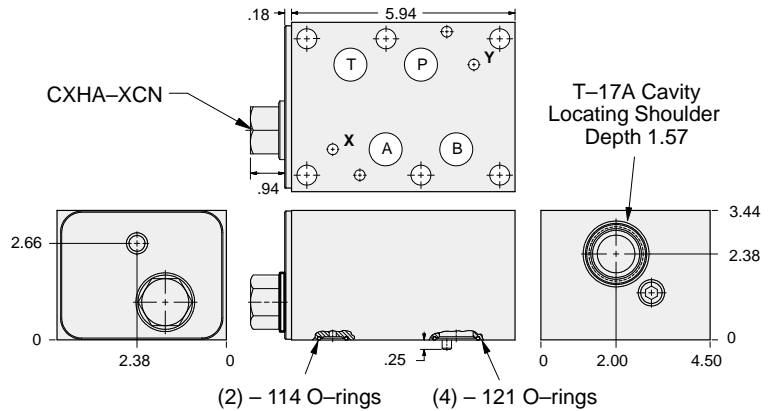
- Aluminum rated to 3000 psi and Ductile Iron rated to 5000 psi.
- See page viii for ordering cartridge/body and seals. Pressure ratings, material specifications on page xiv.



### FUNCTION

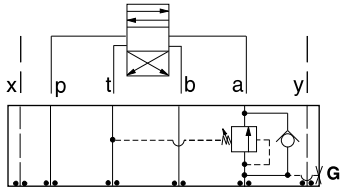
In to A  
Reverse FF Check

### Sequence Valves



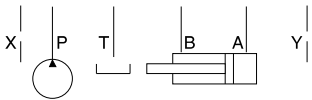
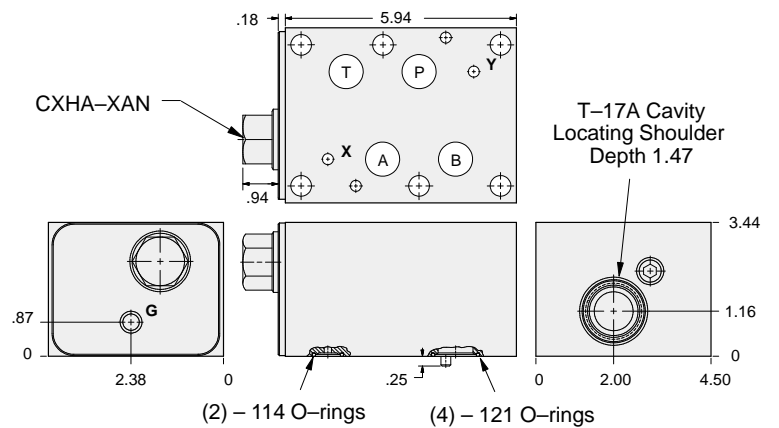
Gage Port (Plugged)	ALUMINUM		DUCTILE IRON	
	Model Code	List Price	Model Code	List Price
.25 NPTF	<b>HB4</b>		<b>HB4/S</b>	
.25 BSPP	<b>HB4/M</b>		<b>HB4/T</b>	

### Sequence Valves



### FUNCTION

Out of A  
Reverse FF Check



Gage Port (Plugged)	ALUMINUM		DUCTILE IRON	
	Model Code	List Price	Model Code	List Price
.25 NPTF	<b>HB6</b>		<b>HB6/S</b>	
.25 BSPP	<b>HB6/M</b>		<b>HB6/T</b>	

### TYPICAL CARTRIDGES USED WITH BODIES SHOWN ABOVE

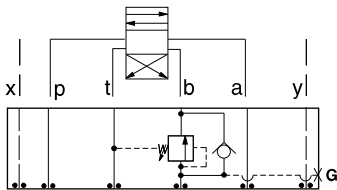
	Pilot Operated Sequence Valve		
	RSHC Page 2.07		
	Pilot Operated "Kick-Down" Sequence Valve		
	SQHB Page 2.09		
	Air Controlled, Pilot Operated Sequence Valve		
	RSHE Page 2.11		
OTHER VALVES:			



# ISO 08 SANDWICH BODIES



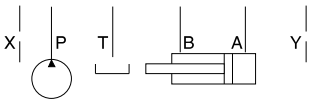
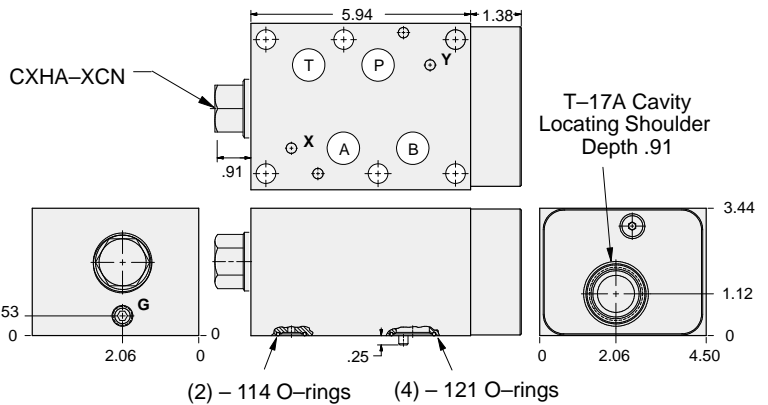
- Aluminum rated to 3000 psi and Ductile Iron rated to 5000 psi.
- See page viii for ordering cartridge/body and seals. Pressure ratings, material specifications on page xiv.



### FUNCTION

Out of **B**  
Reverse FF Check

### Sequence Valves



Gage Port (Plugged)	ALUMINUM		DUCTILE IRON	
	Model Code	List Price	Model Code	List Price
.25 NPTF	<b>HB7</b>		<b>HB7/S</b>	
.25 BSPP	<b>HB7/M</b>		<b>HB7/T</b>	

08 SEQUENCE

TYPICAL CARTRIDGES USED WITH BODIES SHOWN ABOVE			
	Pilot Operated Sequence Valve		
	<b>RSHC Page 2.07</b>		
	Pilot Operated "Kick-Down" Sequence Valve		
	<b>SQHB Page 2.09</b>		
	Air Controlled, Pilot Operated Sequence Valve		
	<b>RSHE Page 2.11</b>		
<b>OTHER VALVES:</b>			