

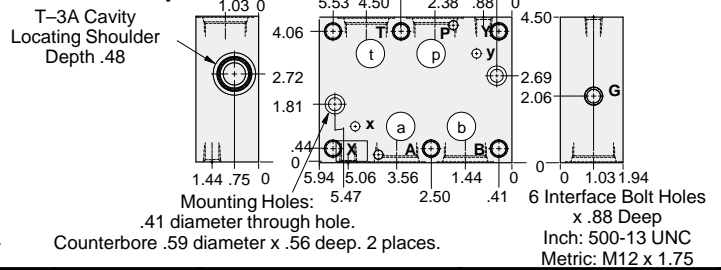
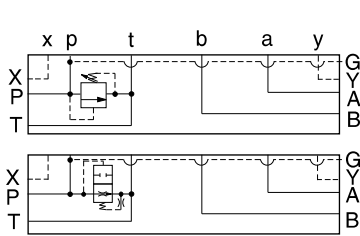


ISO 08 SANDWICH BODIES



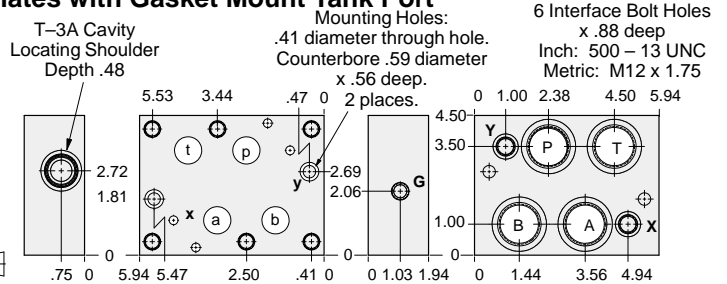
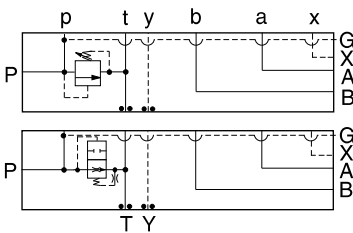
- Aluminum rated to 3000 psi and Ductile Iron rated to 5000 psi.
- See page viii for ordering cartridge/body and seals. Pressure ratings, material specifications on page xiv.

Side Ported Subplates



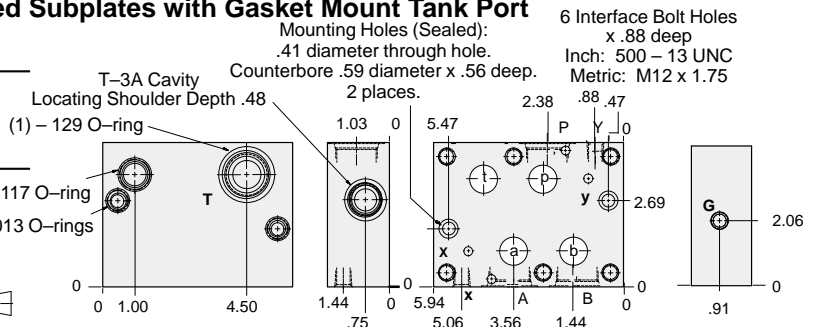
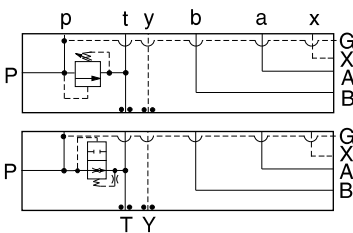
Bolt Hole Interface	Port P,T,A,B	Port X,Y	Gage Port	ALUMINUM		DUCTILE IRON	
				Model Code	List Price	Model Code	List Price
Inch	1.00 NPTF	.25 NPTF	.25 NPTF	CSE		CSE/S	
Inch	SAE-16	SAE-6	.25 NPTF	CSM		CSM/S	
Metric	1.00 BSPP	.25 BSPP	.25 BSPP	CSX		CSX/S	

Side Ported Subplates with Gasket Mount Tank Port



Bolt Hole Interface	Port P,T,A,B	Port X,Y	Gage Port	ALUMINUM		DUCTILE IRON	
				Model Code	List Price	Model Code	List Price
Inch	1.00 NPTF	.25 NPTF	.25 NPTF	CRE		CRE/S	
Inch	SAE-16	SAE-6	.25 NPTF	CRM		CRM/S	
Metric	1.00 BSPP	.25 BSPP	.25 BSPP	CRX		CRX/S	

Side Ported Subplates with Gasket Mount Tank Port



Bolt Hole Interface	Ports A, B, P	Port T	Port X, Y	Gage Port	ALUMINUM		DUCTILE IRON	
					Model Code	List Price	Model Code	List Price
Inch	1.00 NPTF	1.00 NPTF	.25 NPTF	.25 NPTF	CTE		CTE/S	
Inch	SAE-16	1.00 NPTF	SAE-6	.25 NPTF	CTM		CTM/S	
Metric	1.00 BSPP	1.00 BSPP	.25 BSPP	.25 BSPP	CTS		CTS/S	

TYPICAL CARTRIDGES USED WITH BODIES SHOWN ABOVE

	Pilot Operated Relief Valve		Direct Acting Relief Valve
	RPGC Page 1.06		RDFA Page 1.10
	Pilot Operated, Rapid Response Relief Valve		Air Bleed and Start-up Valve
	RPGE Page 1.08		NQEB Page 10.16

OTHER VALVES:

08 SUBPLATE

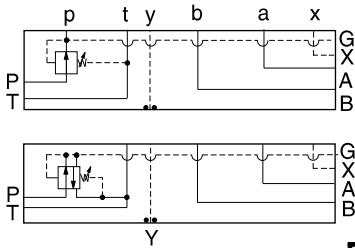


ISO 08 SANDWICH BODIES



- Aluminum rated to 3000 psi and Ductile Iron rated to 5000 psi.
- See page viii for ordering cartridge/body and seals. Pressure ratings, material specifications on page xiv.

Side Ported Subplates



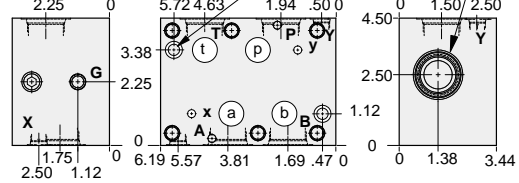
FUNCTION

Reducing on P

Reducing/Relieving on P

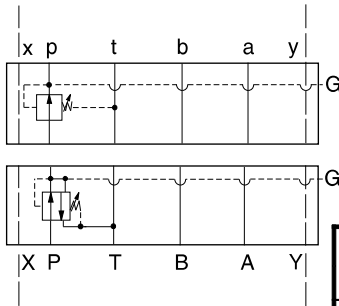
6 Interface Bolt Holes
x .88 deep
Inch: .500-13 UNC
Metric: M12 x 1.75

Mounting Holes:
.41 diameter through hole.
Counterbore .59 diameter
x .56 deep.
2 places.



Bolt Hole Interface	Gage Port	Ports A,B,P,T	Ports X,Y	ALUMINUM		DUCTILE IRON	
				Model Code	List Price	Model Code	List Price
Inch	.25 NPTF	1.00 NPTF	.25 NPTF	HSE		HSE/S	
Inch	.25 NPTF	SAE-16	SAE-6	HSM		HSM/S	
Metric	.25 BSPP	1.00 BSPP	.25 BSPP	HSX		HSX/S	

Rear Ported Subplates



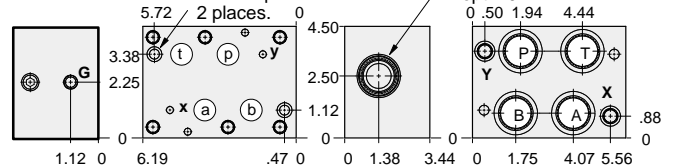
FUNCTION

Reducing on P

Reducing/Relieving on P

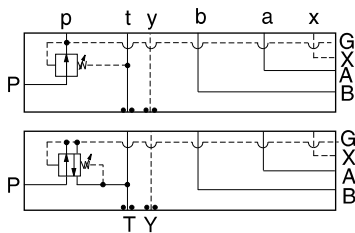
6 Interface Bolt Holes
x .88 deep
Inch: .500-13 UNC
Metric: M12 x 1.75

Mounting Holes:
.41 diameter through hole.
Counterbore .59 diameter
x .56 deep.
2 places.



Bolt Hole Interface	Gage Port	Ports A,B,P,T	Ports X,Y	ALUMINUM		DUCTILE IRON	
				Model Code	List Price	Model Code	List Price
Inch	.25 NPTF	1.00 NPTF	.25 NPTF	HRE		HRM/S	
Inch	.25 NPTF	SAE-16	SAE-6	HRM		HRM/S	
Metric	.25 BSPP	1.00 BSPP	.25 BSPP	HRX		HRX/S	

Side Ported Subplates with Gasket Mount Tank Port



FUNCTION

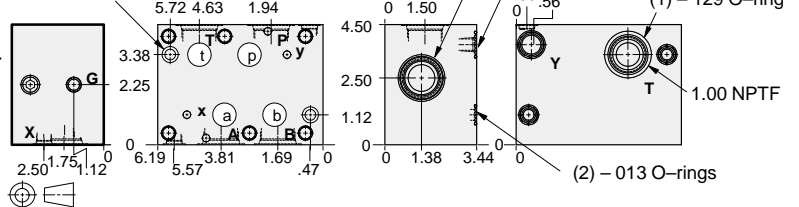
Reducing on P

Reducing/Relieving on P

Mounting Holes:
.41 diameter through hole.
Counterbore .59 diameter
x .56 deep.
2 places.

T-17A Cavity
Locating Shoulder
Depth .91

6 Interface Bolt Holes
x .88 deep
Inch: .500-13 UNC
Metric: M12 x 1.75



Bolt Hole Interface	Gage Port	Ports A,B,P	Ports X, Y	ALUMINUM		DUCTILE IRON	
				Model Code	List Price	Model Code	List Price
Inch	.25 NPTF	1.00 NPTF	.25 NPTF	HTE		HTE/S	
Inch	.25 NPTF	SAE-16	SAE-6	HTM		HTM/S	
Metric	.25 BSPP	1.00 BSPP	.25 BSPP	HTX		HTX/S	

TYPICAL CARTRIDGES USED WITH BODIES SHOWN ABOVE

	Pilot Operated Reducing Valve		Pilot Operated Reducing/Relieving Valve
	PBHB Page 3.07		PPHB Page 3.11
	Air Controlled, Pilot Operated Reducing Valve		Air Controlled, Pilot Operated Reducing/Relieving Valve
	PBHC Page 3.09		PPHC Page 3.13