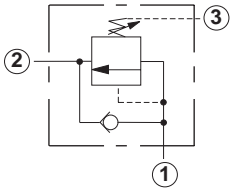


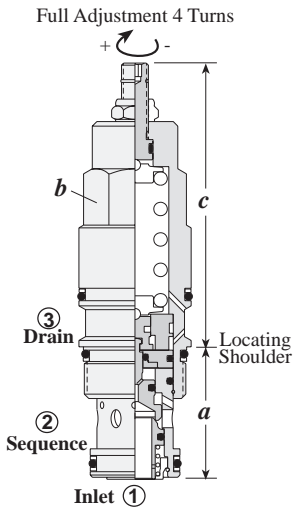
Sequence Valves

DIRECT ACTING WITH REVERSE FREE FLOW CHECK



Capacity	Typical Cartridge Model Code	Cavity	Cartridge Dimensions				Installation Torque (lb. ft.)
			a	b	L	C	
15 GPM	SCCA - LAN	T - 11A	1.38	7/8"	3.09	3.15	35/30
30 GPM	SCEA - LAN	T - 2A	1.38	1 1/8"	3.47	3.53	45/50
60 GPM	SCGA - LAN	T - 17A	1.81	1 1/4"	3.94	4.00	150/160
120 GPM	SCIA - LAN	T - 19A	2.50	1 5/8"	4.72	4.92	350/375

OPTION ORDERING INFORMATION



SC * A - * * *

	Control**	Adjustment Range	Seal
Nominal Capacity			
C 15 GPM	L Standard Screw	A 500 - 3000 psi	N Buna-N
E 30 GPM	C Tamper Resistant	W 800 - 4500 psi	V Viton
G 60 GPM		B 300 - 1500 psi	
I 120 GPM		D 200 - 800 psi	
		C 2000 - 6000 psi	

Adjustment Range Options:
 A, B and W are standard set at 1000 psi.
 C Option is standard set at 2000 psi.
 D Option is standard set at 400 psi.
Customer may specify pressure setting.

** See page 244 for information on Control Options

TECHNICAL TIPS / PERFORMANCE CURVES

Sequence Valves, Reverse Free Flow Check

Applications

SC*A series of sequence valves have an integral reverse free flow check and may be used in a similar manner to the cartridges without the check.

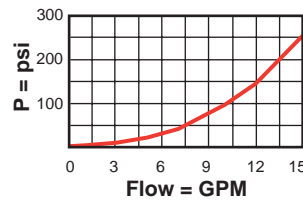
Design Concepts and Features

- This is a zero pilot flow valve. Port 3 must not be plugged.
- Pressure at Port 3 is directly additive to valve setting.
- Typical response time is 2 ms.
- Maximum leakage is 10 drops/min. at reseal.
- Reseat exceeds 85% of set pressure.
- Reverse free flow check cracking pressure is 20 psi to 45 psi, depending on frame size.

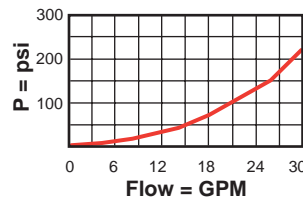
Performance Curves

Pressure Drop-full Sequence

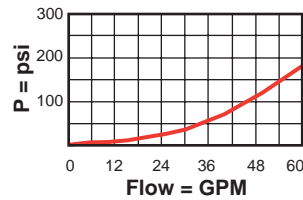
SCCA-L*N



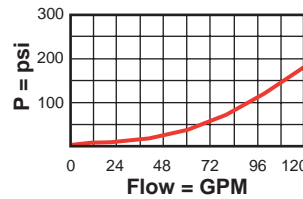
SCEA-L*N



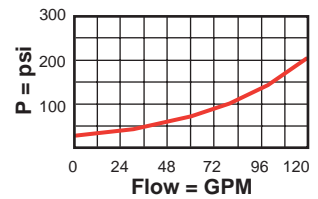
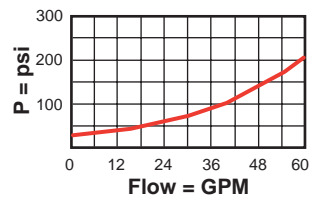
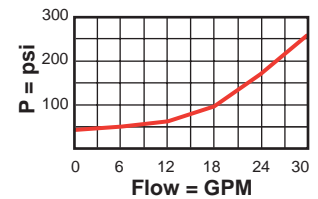
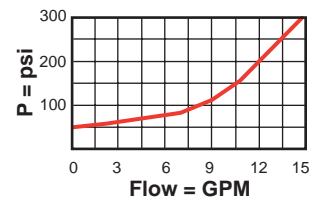
SCGA-L*N



SCIA-L*N



Reverse Free Flow



General Application Requirements

- Operating Temperature Range: Buna-N seals -50° F to 200° F, Viton seals 0° F to 250° F.
- Viscosity Range: 60-3000 SUS.
- Fluid Contamination Level: ISO 4406 18/15 or better; Recommend $\beta_{10} \geq 75$ to achieve ISO 18/15 or better in most systems.
- Factory Pressure Setting for cartridge is established at a 4 GPM flow rate.