

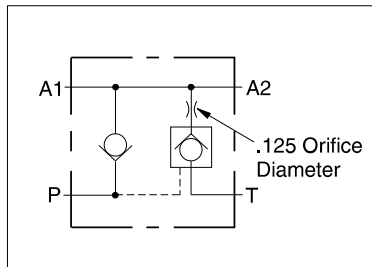


# ACCUMULATOR DUMP ASSEMBLY



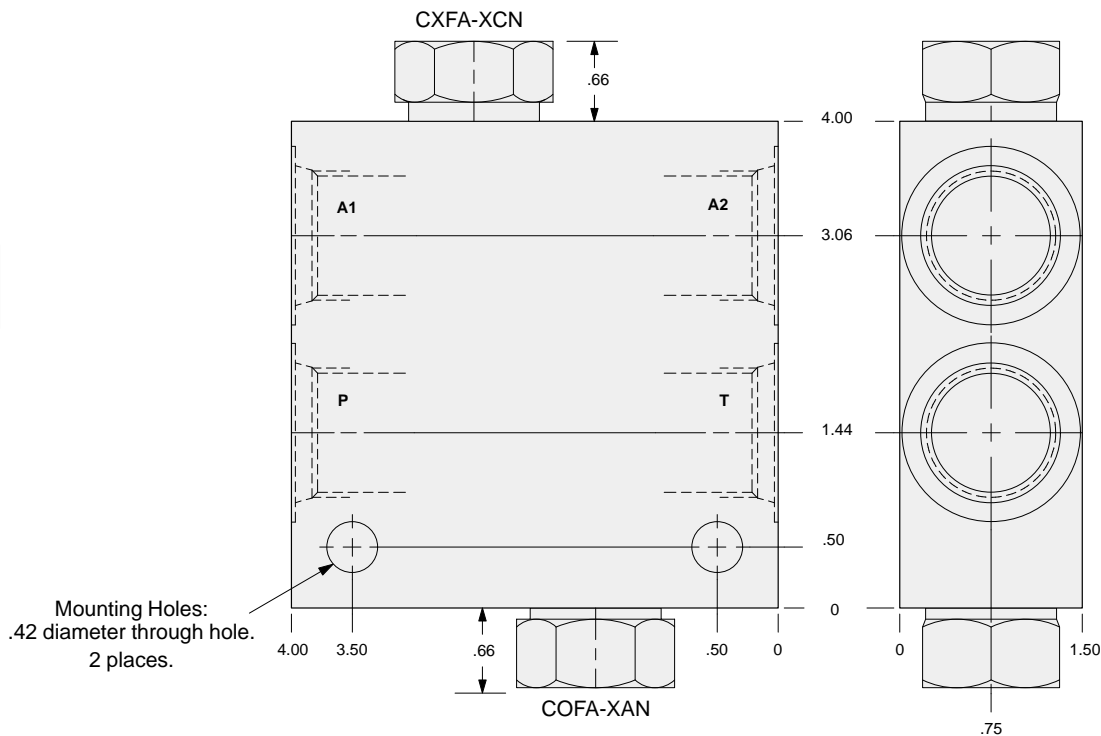
- Aluminum rated to 3000 psi and Ductile Iron rated to 5000 psi.

Ports P, T A1 & A2	ALUMINUM		DUCTILE IRON	
	Port Code	List Price*	Port Code	List Price*
.25 NPTF	A		A/S	
.375 NPTF	B		B/S	
.50 NPTF	C		C/S	
.75 NPTF	D		D/S	
SAE-6	I		I/S	
SAE-8	J		J/S	
SAE-10	K		K/S	
SAE-12	L		L/S	
.25 BSPP	T		T/S	
.375 BSPP	U		U/S	
.50 BSPP	V		V/S	
.75 BSPP	W		W/S	



\*For part number and price for body only contact your local SUN distributor.

13



<b>OPTIONS</b>	<b>YCFE - XAN - A*</b>			
	For Viton Seals Change XAN to XAV.			<b>PORTS</b> See Chart above



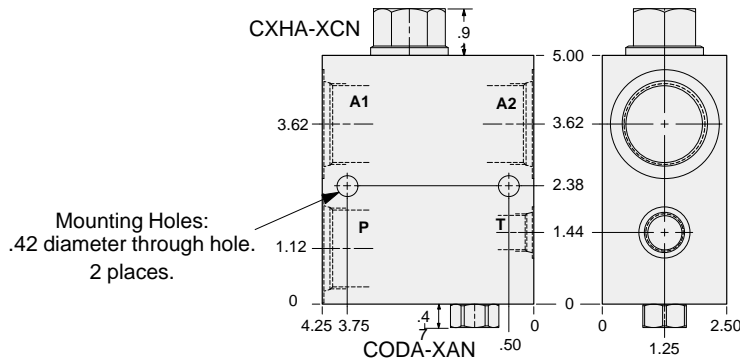
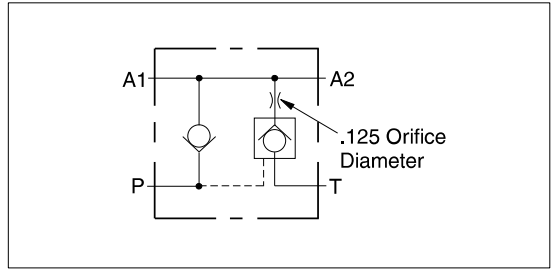
# ACCUMULATOR DUMP ASSEMBLY



- Aluminum rated to 3000 psi and Ductile Iron rated to 5000 psi.

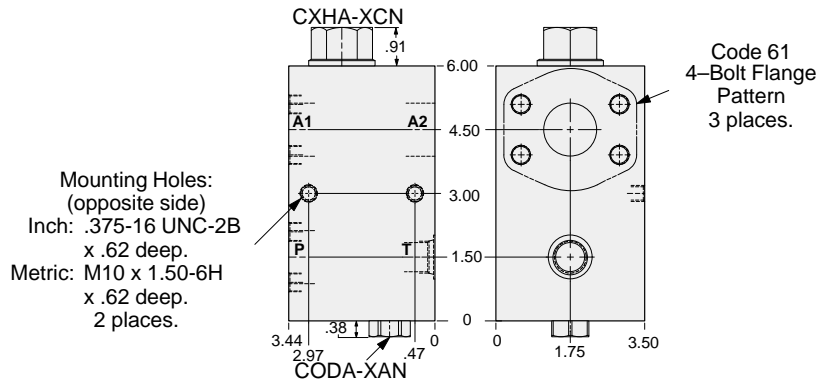
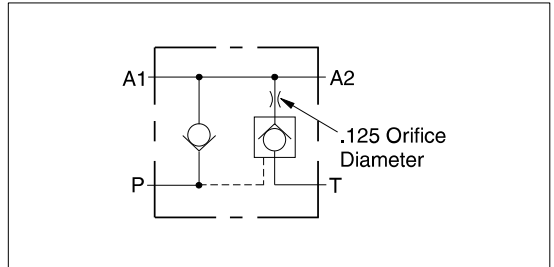
Ports P, A1 & A2	Port T	ALUMINUM		DUCTILE IRON	
		Port Code	List Price*	Port Code	List Price*
.75 NPTF	.50 NPTF	D		D/S	
1.00 NPTF	.50 NPTF	E		E/S	
1.25 NPTF	.50 NPTF	F		F/S	
SAE-12	SAE-8	L		L/S	
SAE-16	SAE-8	M		M/S	
SAE-20	SAE-8	N		N/S	
.75 BSPP	.50 BSPP	W		W/S	
1.00 BSPP	.50 BSPP	X		X/S	
1.25 BSPP	.50 BSPP	Y		Y/S	

\*For part number and price for body only contact your local SUN distributor.



Mounting Hole Dimensions	Ports A1, A2, P Code 61	Port T	ALUMINUM		DUCTILE IRON	
			Port Code	List Price*	Port Code	List Price*
Inch	1.00"	SAE-8	P		P/S	
Metric	1.00"	.50 BSPP	P/M		P/T	
Inch	1.25"	SAE-8	Q		Q/S	
Metric	1.25"	.50 BSPP	Q/M		Q/T	

\*For part number and price for body only contact your local SUN distributor.



13

<b>OPTIONS</b>	<b>YCHE - XAN - A*</b>			
For Viton Seals Change XAN to XAV.				<b>PORTS</b> See Chart above