



CROSS-PORT RELIEF ASSEMBLY WITH SHUTTLE AND SOLENOID OPERATED VENT



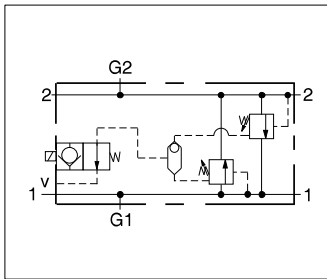
- Maximum operating pressure 3000 psi.
- Power requirement: 12 watts.

YVCG: Normally Open

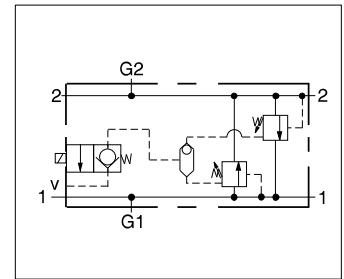
YVCH: Normally Closed

ALUMINUM		DUCTILE IRON		Ports 1 & 2	Port V	Ports G1 & G2	ALUMINUM		DUCTILE IRON	
Port Code	List Price*	Port Code	List Price*				Port Code	List Price*	Port Code	List Price*
A		A/S		.25 NPTF	.25 NPTF	.25 NPTF	A		A/S	
B		B/S		.375 NPTF	.25 NPTF	.25 NPTF	B		B/S	
C		C/S		.50 NPTF	.25 NPTF	.25 NPTF	C		C/S	
D		D/S		.75 NPTF	.25 NPTF	.25 NPTF	D		D/S	
I		I/S		SAE-6	SAE-6	.25 NPTF	I		I/S	
J		J/S		SAE-8	SAE-6	.25 NPTF	J		J/S	
K		K/S		SAE-10	SAE-6	.25 NPTF	K		K/S	
L		L/S		SAE-12	SAE-6	.25 NPTF	L		L/S	
T		T/S		.25 BSPP	.25 BSPP	.25 BSPP	T		T/S	
U		U/S		.375 BSPP	.25 BSPP	.25 BSPP	U		U/S	
V		V/S		.50 BSPP	.25 BSPP	.25 BSPP	V		V/S	
W		W/S		.75 BSPP	.25 BSPP	.25 BSPP	W		W/S	

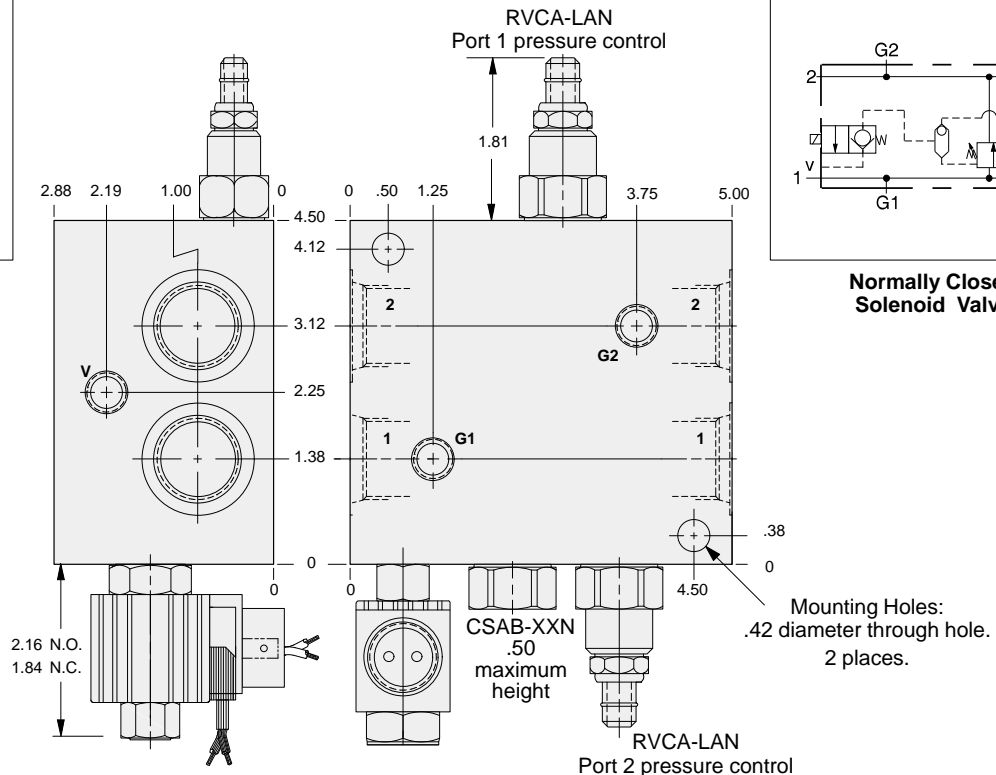
*For part number and price for body only contact your local SUN distributor.



**Normally Open
Solenoid Valve**



**Normally Closed
Solenoid Valve**



OPTIONS		YVC * - LAN		**		PORTS
G Normally Open	CARTRIDGE RVCA Pg 1.18	J 12 volt DC, 24" leads	SOLENOID COILS		V 24 volt DC, ISO/DIN	See Chart above
H Normally Closed	For Viton Seals Change LAN to LAV. Customer Specified Setting Stamped on Hex	K 24 volt DC, 24" leads	N 115 volt, 50/60 Hz, conduit	O 230 volt, 50/60 Hz, conduit	V 230 volt, 50/60 Hz, ISO/DIN	
		S 12 volt DC, ISO/DIN			W 120 volt, 50/60 Hz, ISO/DIN	



CROSS-PORT RELIEF ASSEMBLY WITH SHUTTLE AND SOLENOID OPERATED VENT



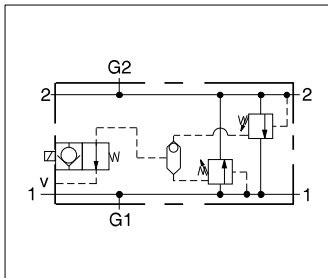
- Maximum operating pressure 3000 psi.
- Power requirement: 12 watts.

YVEG: Normally Open

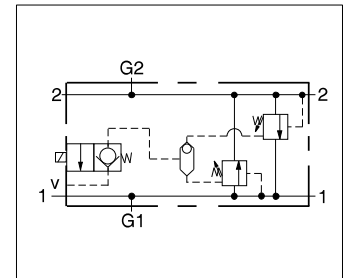
YVEH: Normally Closed

ALUMINUM		DUCTILE IRON		Ports 1 & 2	Port V	Ports G1 & G2	ALUMINUM		DUCTILE IRON	
Port Code	List Price*	Port Code	List Price*				Port Code	List Price*	Port Code	List Price*
B		B/S		.375 NPTF	.25 NPTF	.25 NPTF	B		B/S	
C		C/S		.50 NPTF	.25 NPTF	.25 NPTF	C		C/S	
D		D/S		.75 NPTF	.25 NPTF	.25 NPTF	D		D/S	
E		E/S		1.00 NPTF	.25 NPTF	.25 NPTF	E		E/S	
I		I/S		SAE-6	SAE-6	.25 NPTF	I		I/S	
J		J/S		SAE-8	SAE-6	.25 NPTF	J		J/S	
K		K/S		SAE-10	SAE-6	.25 NPTF	K		K/S	
L		L/S		SAE-12	SAE-6	.25 NPTF	L		L/S	
M		M/S		SAE-16	SAE-6	.25 NPTF	M		M/S	
U		U/S		.375 BSPP	.25 BSPP	.25 BSPP	U		U/S	
V		V/S		.50 BSPP	.25 BSPP	.25 BSPP	V		V/S	
W		W/S		.75 BSPP	.25 BSPP	.25 BSPP	W		W/S	
X		X/S		1.00 BSPP	.25 BSPP	.25 BSPP	X		X/S	

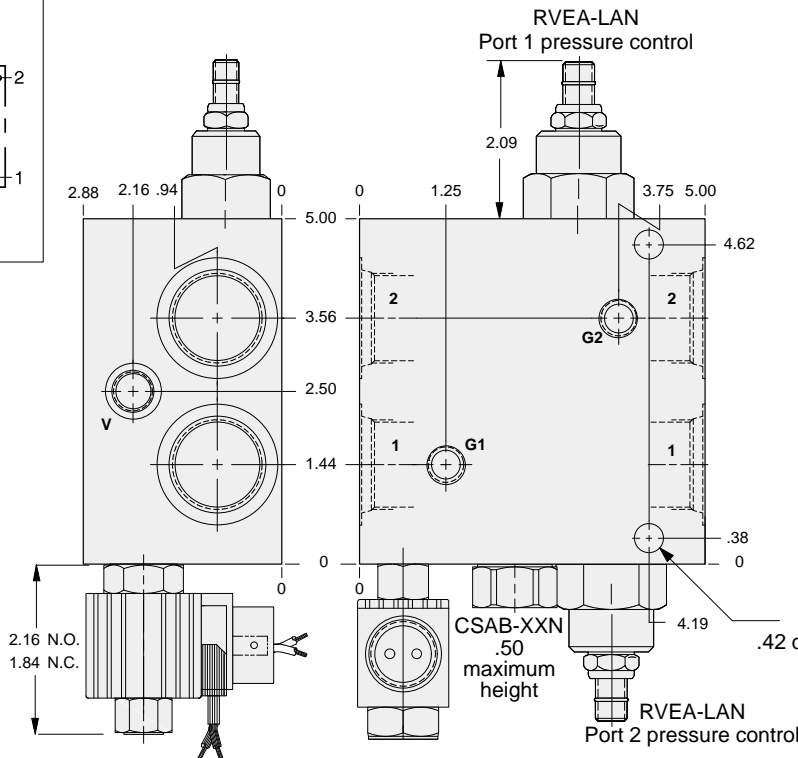
*For part number and price for body only contact your local SUN distributor.



Normally Open
Solenoid Valve



Normally Closed
Solenoid Valve



OPTIONS

YVE * - LAN **

G Normally Open

H Normally Closed

CARTRIDGE

RVEA Pg 1.18

For Viton Seals Change
LAN to LAV.

Customer Specified Setting
Stamped on Hex

SOLENOID COILS

J 12 volt DC,
24" leads

K 24 volt DC,
24" leads

N 115 volt, 50/60 Hz,
conduit

O 230 volt, 50/60 Hz,
conduit

S 12 volt DC,
ISO/DIN

V 24 volt DC,
ISO/DIN

V 230 volt, 50/60 Hz,
ISO/DIN

W 120 volt, 50/60 Hz,
ISO/DIN

PORTS

See Chart
above



CROSS-PORT RELIEF ASSEMBLY WITH SHUTTLE AND SOLENOID OPERATED VENT



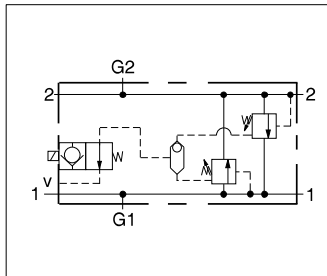
- Maximum operating pressure 3000 psi.
- Power requirement: 12 watts.

YVFG: Normally Open

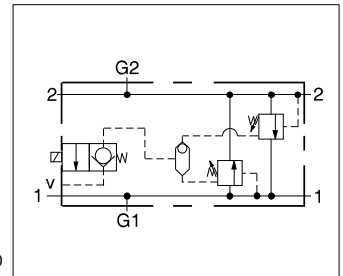
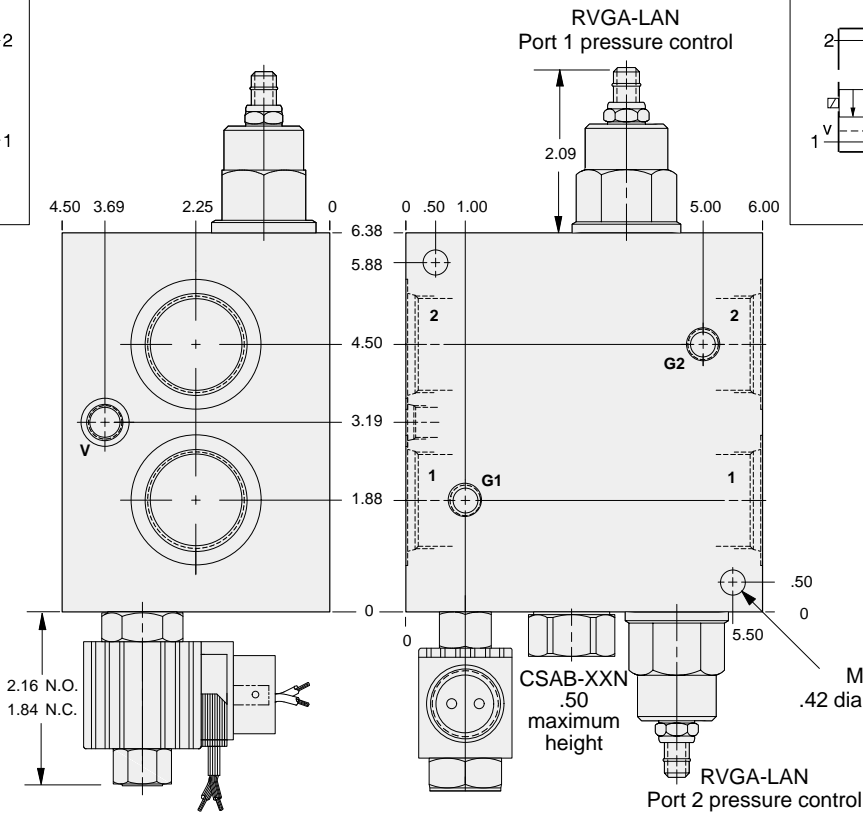
YVFH: Normally Closed

ALUMINUM		DUCTILE IRON		Ports 1 & 2	Port V	Ports G1 & G2	ALUMINUM		DUCTILE IRON	
Port Code	List Price*	Port Code	List Price*				Port Code	List Price*	Port Code	List Price*
D		D/S		.75 NPTF	.25 NPTF	.25 NPTF	D		D/S	
E		E/S		1.00 NPTF	.25 NPTF	.25 NPTF	E		E/S	
F		F/S		1.25 NPTF	.25 NPTF	.25 NPTF	F		F/S	
L		L/S		SAE-12	SAE-6	.25 NPTF	L		L/S	
M		M/S		SAE-16	SAE-6	.25 NPTF	M		M/S	
N		N/S		SAE-20	SAE-6	.25 NPTF	N		N/S	
W		W/S		.75 BSPP	.25 BSPP	.25 BSPP	W		W/S	
X		X/S		1.00 BSPP	.25 BSPP	.25 BSPP	X		X/S	
Y		Y/S		1.25 BSPP	.25 BSPP	.25 BSPP	Y		Y/S	

*For part number and price for body only contact your local SUN distributor.



Normally Open
Solenoid Valve



Normally Closed
Solenoid Valve

OPTIONS		YVF * - LAN **		
G Normally Open	CARTRIDGE RVGA Pg 1.19	J 12 volt DC, 24" leads	V 24 volt DC, ISO/DIN	PORTS See Chart above
H Normally Closed	For Viton Seals Change LAN to LAV. Customer Specified Setting Stamped on Hex	K 24 volt DC, 24" leads	V 230 volt, 50/60 Hz, ISO/DIN	
		N 115 volt, 50/60 Hz, conduit	W 120 volt, 50/60 Hz, ISO/DIN	
		O 230 volt, 50/60 Hz, conduit		
		S 12 volt DC, ISO/DIN		



CROSS-PORT RELIEF ASSEMBLY WITH SHUTTLE AND SOLENOID OPERATED VENT



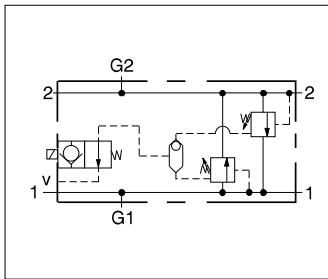
- Maximum operating pressure 3000 psi.
- Power requirement: 12 watts.

YVFG: Normally Open

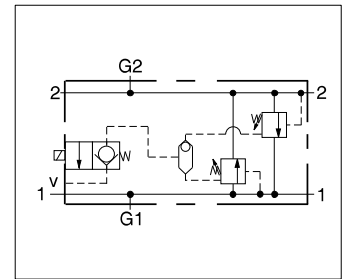
YVFH: Normally Closed

ALUMINUM		DUCTILE IRON		Mounting Hole Dimensions	Port V	Ports G1 & G2	ALUMINUM		DUCTILE IRON	
Port Code	List Price*	Port Code	List Price*				Port Code	List Price*	Port Code	List Price*
P		P/S		Inch	SAE-6	.25 NPTF	P		P/S	
P/M		P/T		Metric	.25 BSPP	.25 BSPP	P/M		P/T	

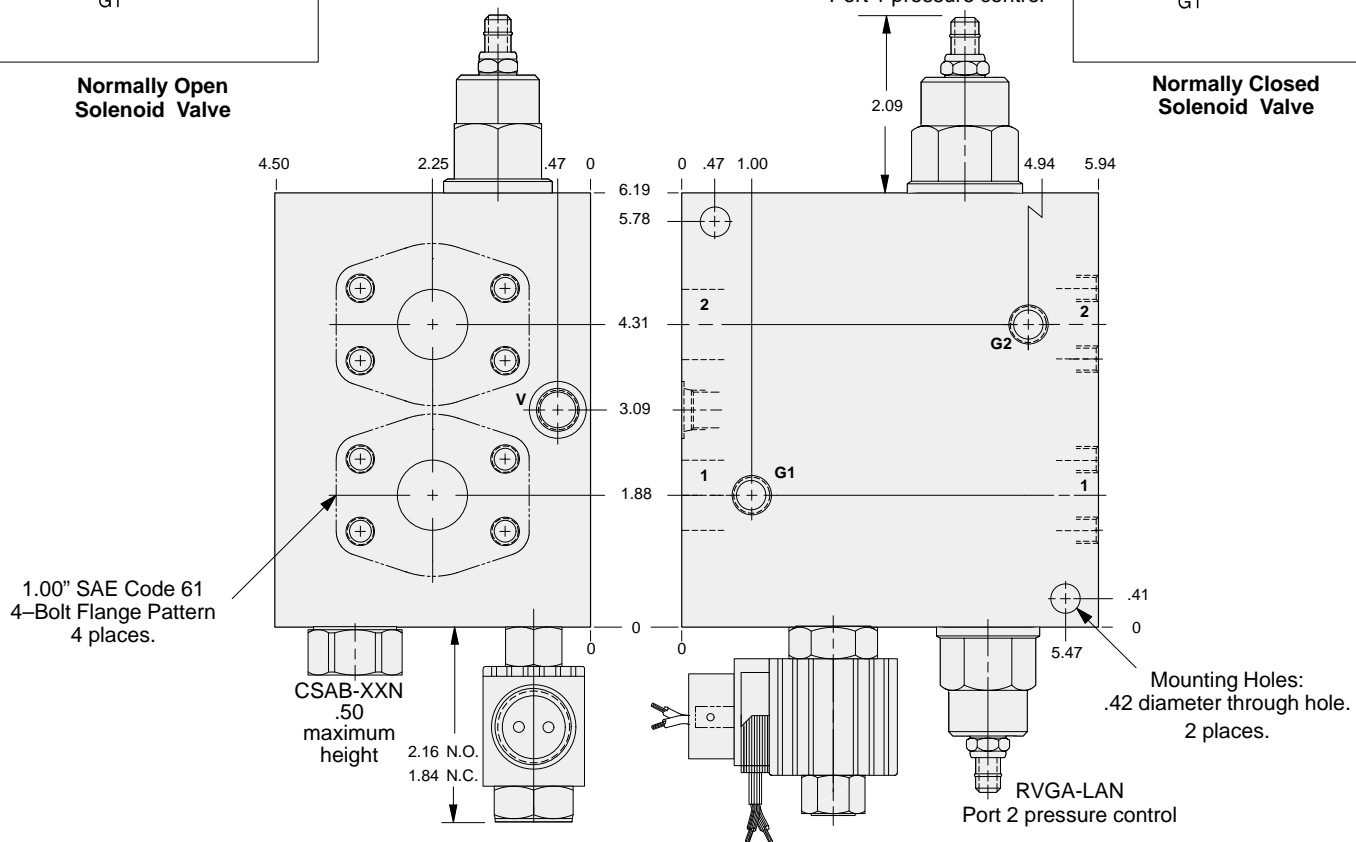
*For part number and price for body only contact your local SUN distributor.



Normally Open Solenoid Valve



Normally Closed Solenoid Valve



13

1.00" SAE Code 61
4-Bolt Flange Pattern
4 places.

CSAB-XXN
.50
maximum
height

Mounting Holes:
.42 diameter through hole.
2 places.

OPTIONS		YVF * - LAN - **		
G Normally Open	CARTRIDGES	J 12 volt DC, 24" leads	SOLENOID COILS	PORTS
H Normally Closed	RVGA Pg 1.19	K 24 volt DC, 24" leads	V 24 volt DC, ISO/DIN	See Chart above
	For Viton Seals Change LAN to LAV.	N 115 volt, 50/60 Hz, conduit	V 230 volt, 50/60 Hz, ISO/DIN	
	Customer Specified Setting Stamped on Hex	O 230 volt, 50/60 Hz, conduit	W 120 volt, 50/60 Hz, ISO/DIN	
		S 12 volt DC, ISO/DIN		



CROSS-PORT RELIEF ASSEMBLY WITH SHUTTLE AND SOLENOID OPERATED VENT



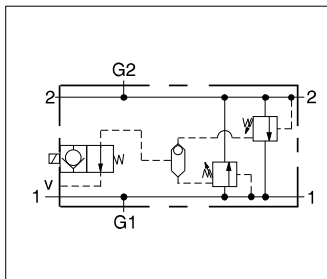
- Maximum operating pressure 3000 psi.
- Power requirement: 12 watts.

YVFG: Normally Open

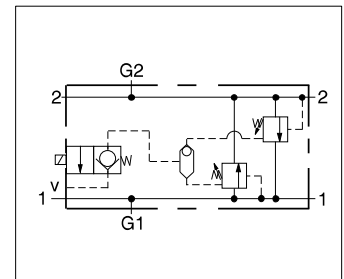
YVFH: Normally Closed

ALUMINUM		DUCTILE IRON		Mounting Hole Dimensions	Port V	Ports G1 & G2	ALUMINUM		DUCTILE IRON	
Port Code	List Price*	Port Code	List Price*				Port Code	List Price*	Port Code	List Price*
Q		Q/S		Inch	SAE-6	.25 NPTF	Q		Q/S	
Q/M		Q/T		Metric	.25 BSPP	.25 BSPP	Q/M		Q/T	

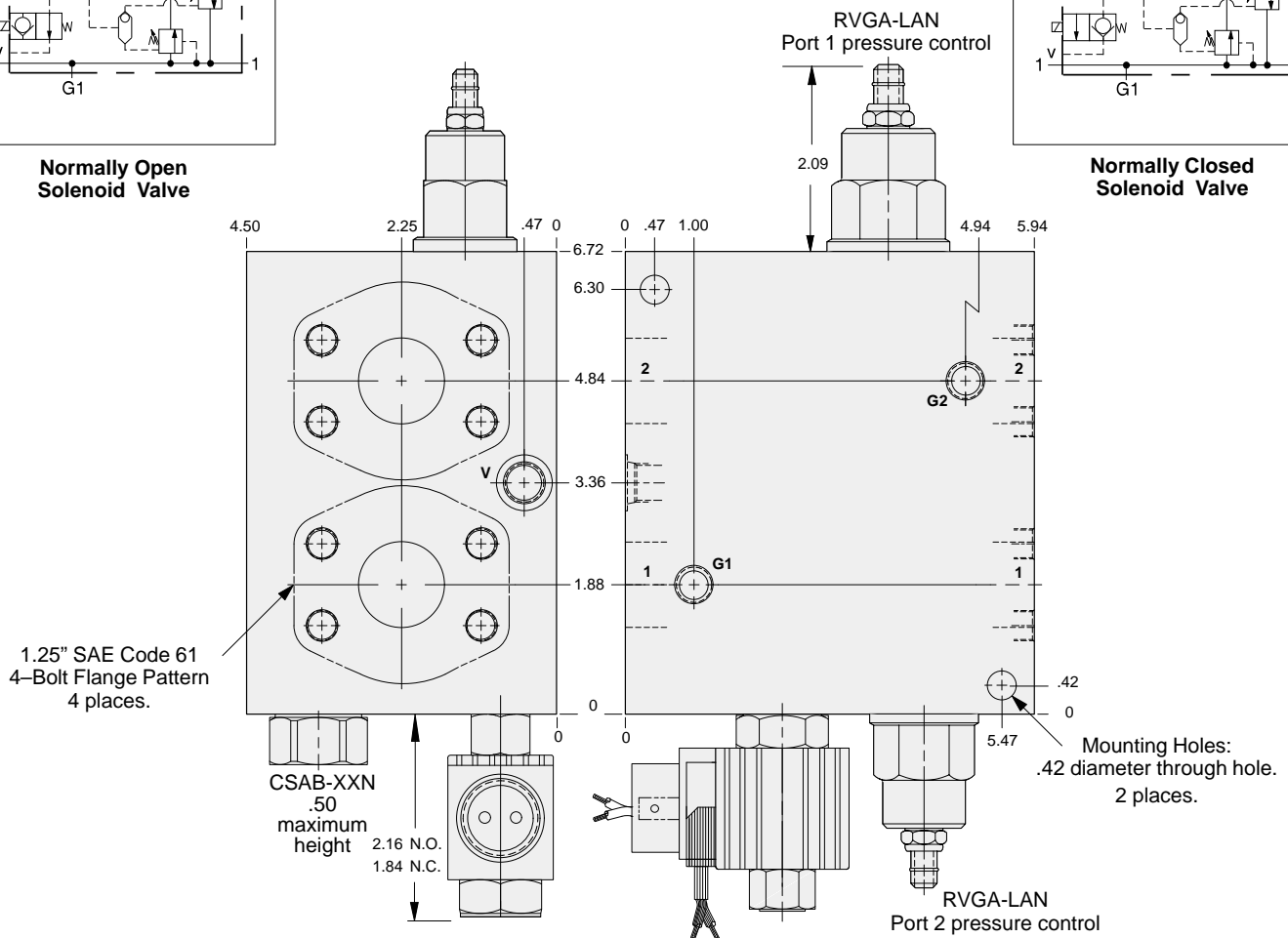
*For part number and price for body only contact your local SUN distributor.



Normally Open Solenoid Valve



Normally Closed Solenoid Valve



1.25" SAE Code 61
4-Bolt Flange Pattern
4 places.

OPTIONS		YVF * - LAN - **		
G Normally Open	CARTRIDGES	J 12 volt DC, 24" leads	SOLENOID COILS	PORTS
H Normally Closed	RVGA Pg 1.19	K 24 volt DC, 24" leads	V 24 volt DC, ISO/DIN	See Chart above
	For Viton Seals Change LAN to LAV.	N 115 volt, 50/60 Hz, conduit	V 230 volt, 50/60 Hz, ISO/DIN	
	Customer Specified Setting Stamped on Hex	O 230 volt, 50/60 Hz, conduit	W 120 volt, 50/60 Hz, ISO/DIN	
		S 12 volt DC, ISO/DIN		