



FLOW DIVIDER/COMBINER TRACTIVE DRIVE ASSEMBLY



- Aluminum rated to 3000 psi and Ductile Iron rated to 5000 psi.
- Replaceable slip orifices.

Orifice Options

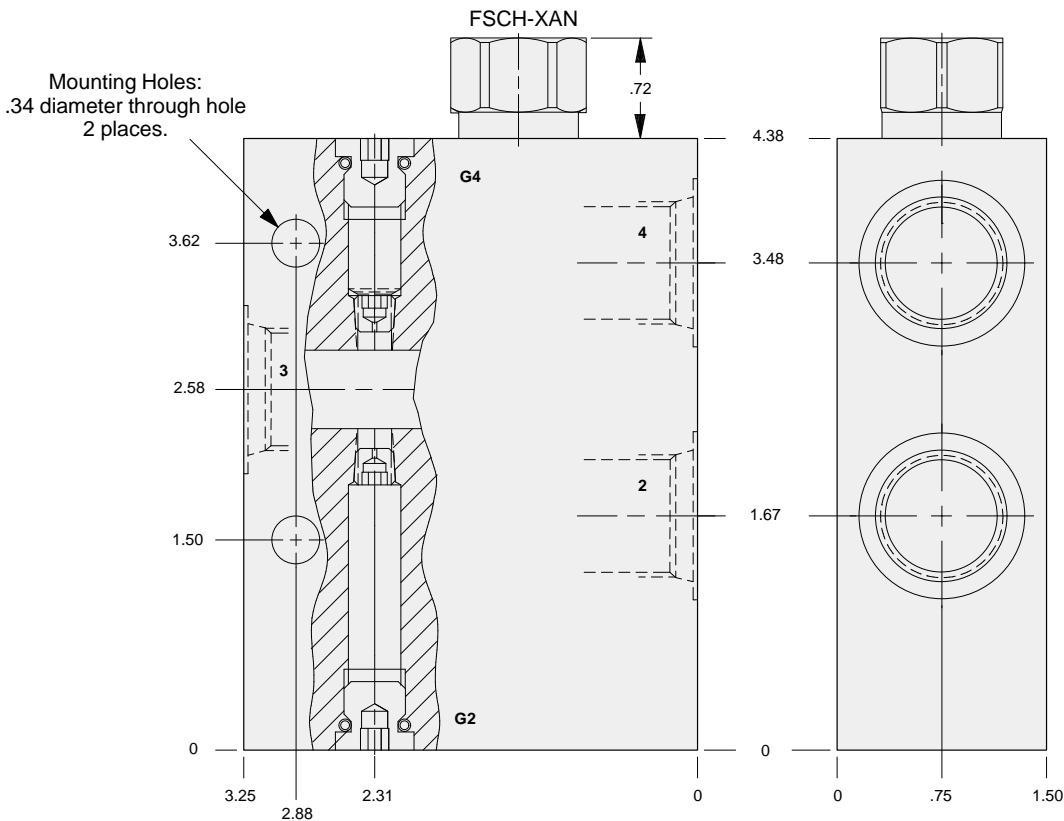
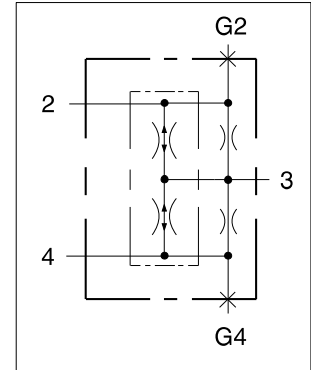
Orifice Code	Slip @ 350 psi	Slip @ 3000 psi
	Flow (GPM)	Flow (GPM)
A	0	0
L	0.7	1.9
P	1.7	4.7
R	2.8	7.7

Other slip ranges are available, and are detailed on SUN drawing #280-038. Slip at 350 psi is additive to basic capacity.

Port Options

Ports 2, 3 & 4	ALUMINUM		DUCTILE IRON	
	Port Code	List Price*	Port Code	List Price*
.25 NPTF	A		A/S	
.375 NPTF	B		B/S	
.50 NPTF	C		C/S	
SAE-6	I		I/S	
SAE-8	J		J/S	
SAE-10	K		K/S	
.25 BSPP	T		T/S	
.375 BSPP	U		U/S	
.50 BSPP	V		V/S	

*For part number and price for body only contact your local SUN distributor.



Removable orifice accessible through ports G2 and G4.

OPTIONS

YGCB - XAN - * *

CARTRIDGE

FSCH Pg 7.14
For Viton Seals Change
XAN to XAV.

Customer Specified Setting
Stamped on Hex

ORIFICE

See Chart
above

PORTS

See Chart
above



FLOW DIVIDER/COMBINER TRACTIVE DRIVE ASSEMBLY



- Aluminum rated to 3000 psi and Ductile Iron rated to 5000 psi.
- Replaceable slip orifices.

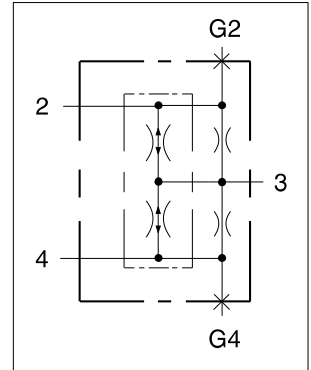
Orifice Options

Orifice Code	Slip @ 350 psi	Slip @ 3000 psi
	Flow (GPM)	Flow (GPM)
A	0	0
N	1.2	3.1
S	3.4	9.2
U	6.0	16.2

Other slip ranges are available, and are detailed on SUN drawing #280-038. Slip at 350 psi is additive to basic capacity.

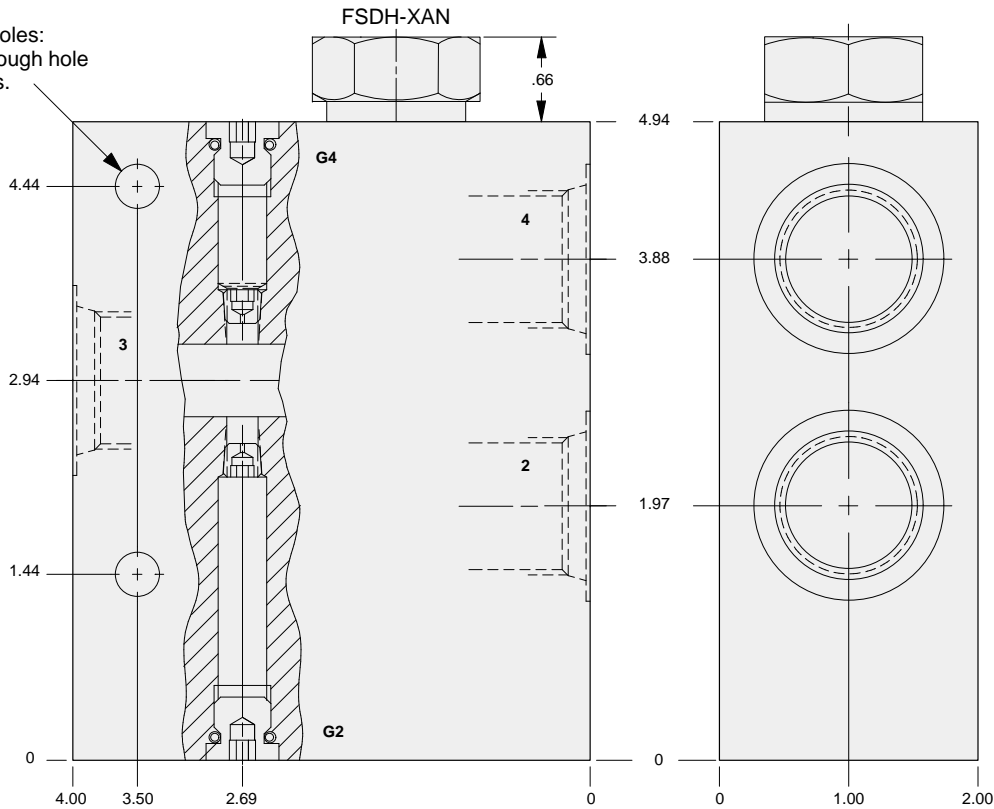
Port Options

Ports 2, 3 & 4	ALUMINUM		DUCTILE IRON	
	Port Code	List Price*	Port Code	List Price*
.375 NPTF	B		B/S	
.50 NPTF	C		C/S	
.75 NPTF	D		D/S	
SAE-8	J		J/S	
SAE-10	K		K/S	
SAE-12	L		L/S	
.375 BSPP	U		U/S	
.50 BSPP	V		V/S	
.75 BSPP	W		W/S	



*For part number and price for body only contact your local SUN distributor.

Mounting Holes:
.34 diameter through hole
2 places.



Removable orifice accessible through ports G2 and G4.

OPTIONS	YGDB - XAN - * *		
CARTRIDGE FSDH Pg 7.14 For Viton Seals Change XAN to XAV.	Customer Specified Setting Stamped on Hex	ORIFICE See Chart above	PORTS See Chart above



FLOW DIVIDER/COMBINER TRACTIVE DRIVE ASSEMBLY



- Aluminum rated to 3000 psi and Ductile Iron rated to 5000 psi.
- Replaceable slip orifices.

Orifice Options

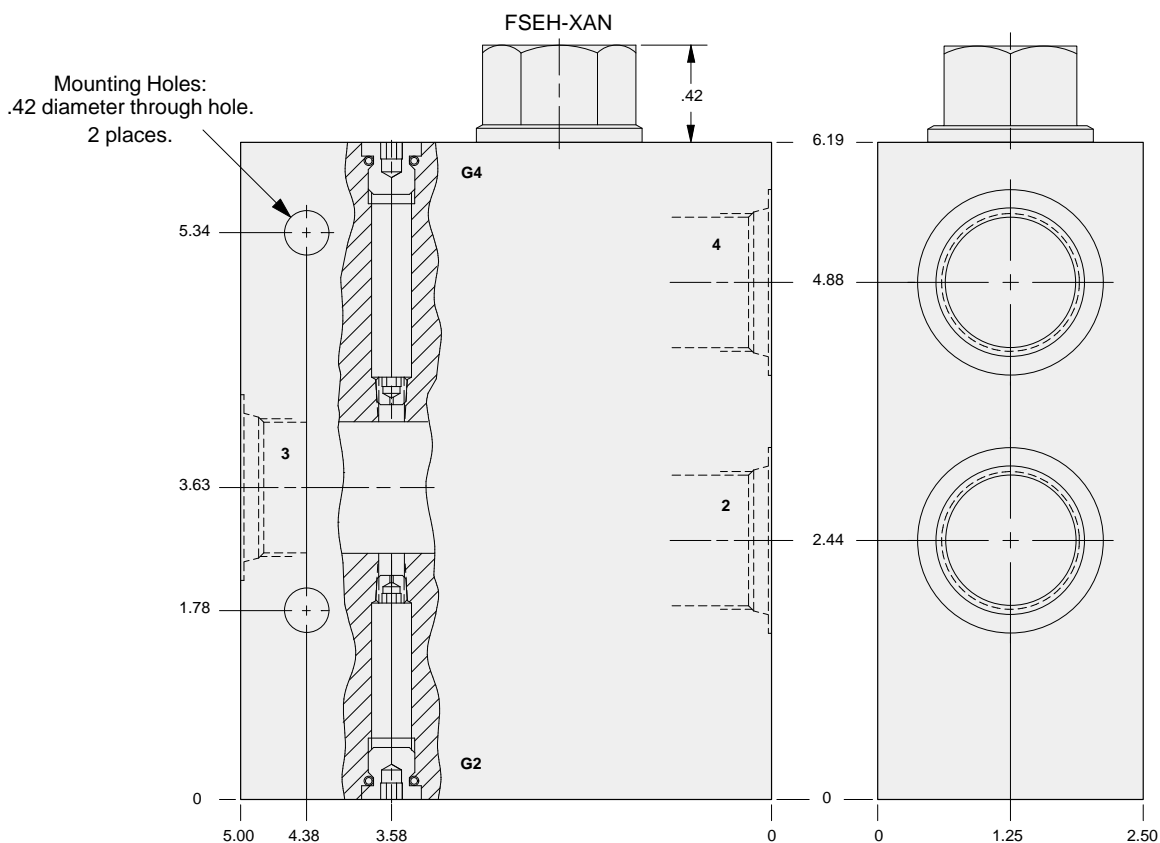
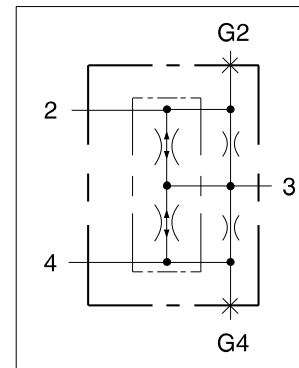
Orifice Code	Slip @ 350 psi	Slip @ 3000 psi
	Flow (GPM)	Flow (GPM)
A	0	0
Q	2.3	6.3
U	6.0	16.2
W	9.2	25.3

Other slip ranges are available, and are detailed on SUN drawing #280-038. Slip at 350 psi is additive to basic capacity.

Port Options

Ports 2, 3 & 4	ALUMINUM		DUCTILE IRON	
	Port Code	List Price*	Port Code	List Price*
.75 NPTF	D		D/S	
1.00 NPTF	E		E/S	
SAE-12	L		L/S	
SAE-16	M		M/S	
.75 BSPP	W		W/S	
1.00 BSPP	X		X/S	

*For part number and price for body only contact your local SUN distributor.



Removable orifice accessible through ports G2 and G4.

OPTIONS

YGEB - XAN - * *

CARTRIDGE

FSEH Pg 7.15
For Viton Seals Change
XAN to XAV.

Customer Specified Setting
Stamped on Hex

ORIFICE

See Chart
above

PORTS

See Chart
above



FLOW DIVIDER/COMBINER TRACTIVE DRIVE ASSEMBLY



- Aluminum rated to 3000 psi and Ductile Iron rated to 5000 psi.
- Replaceable slip orifices.

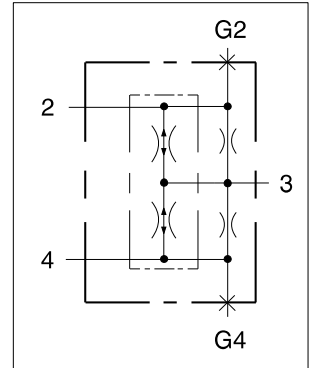
Orifice Options

Orifice Code	Slip @ 350 psi	Slip @ 3000 psi
	Flow (GPM)	Flow (GPM)
A	0	0
T	4.6	12.3
X	13.5	36.7
Y	24.0	64.8

Other slip ranges are available, and are detailed on SUN drawing #280-040. Slip at 350 psi is additive to basic capacity.

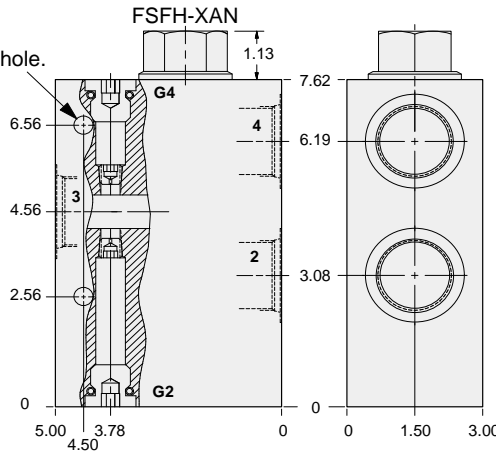
Port Options

Ports 2, 3 & 4	ALUMINUM		DUCTILE IRON	
	Port Code	List Price*	Port Code	List Price*
1.00 NPTF	E		E/S	
1.25 NPTF	F		F/S	
SAE-16	M		M/S	
SAE-20	N		N/S	
1.00 BSPP	X		X/S	
1.25 BSPP	Y		Y/S	



*For part number and price for body only contact your local distributor.

Mounting Holes:
.42 diameter through hole.
2 places.



Removable orifice accessible through ports G2 and G4.

Orifice Options

Orifice Code	Slip @ 350 psi	Slip @ 3000 psi
	Flow (GPM)	Flow (GPM)
A	0	0
T	4.6	12.3
X	13.5	36.7
Y	24.0	64.8

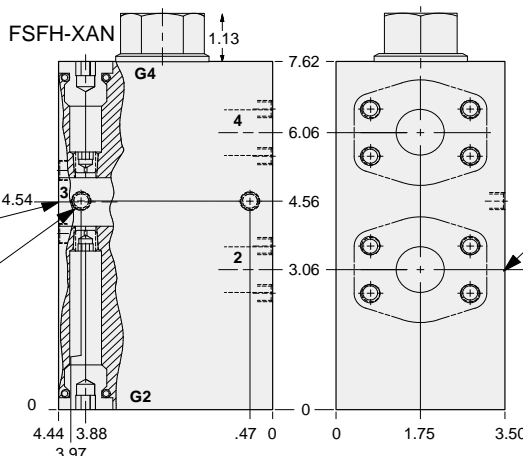
Other slip ranges are available, and are detailed on SUN drawing #280-040. Slip at 350 psi is additive to basic capacity.

Mounting Holes:	Port 3 Code 61	Port 2 & 4 Code 61	ALUMINUM		DUCTILE IRON	
			Port Code	List Price*	Port Code	List Price*
Inch	1.25"	1.00"	Q		Q/S	
Metric	1.25"	1.00"	Q/M		Q/T	

*For part number and price for body only contact your local distributor.

1.25" SAE Code 61
4-Bolt Flange Pattern

Mounting Holes:
(opposite side)
Inch: .375-16 UNC-2B
x .62 deep.
Metric: M10 x 1.50-6H
x .62 deep.
2 places.



Removable orifice accessible through ports G2 and G4.

OPTIONS

YGFB - XAN - * *

CARTRIDGE

FSFH Pg 7.15
For Viton Seals Change
XAN to XAV.

ORIFICE

See Chart
above

PORTS

See Chart
above

Customer Specified Setting
Stamped on Hex