



HOT OIL SHUTTLE AND RELIEF ASSEMBLY INLINE BODY

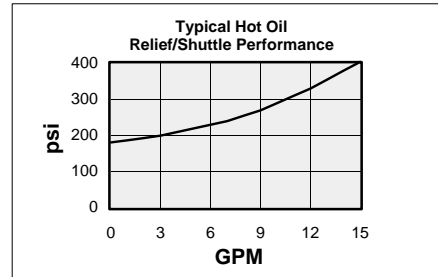
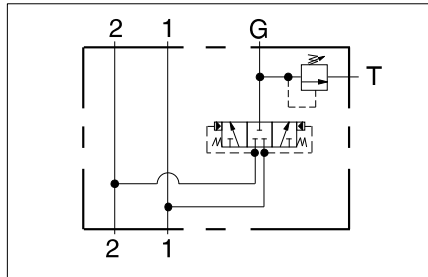


- Aluminum rated to 3000 psi and Ductile Iron rated to 5000 psi.
- Hot oil pressure can be confirmed and/or set with transmission in neutral.

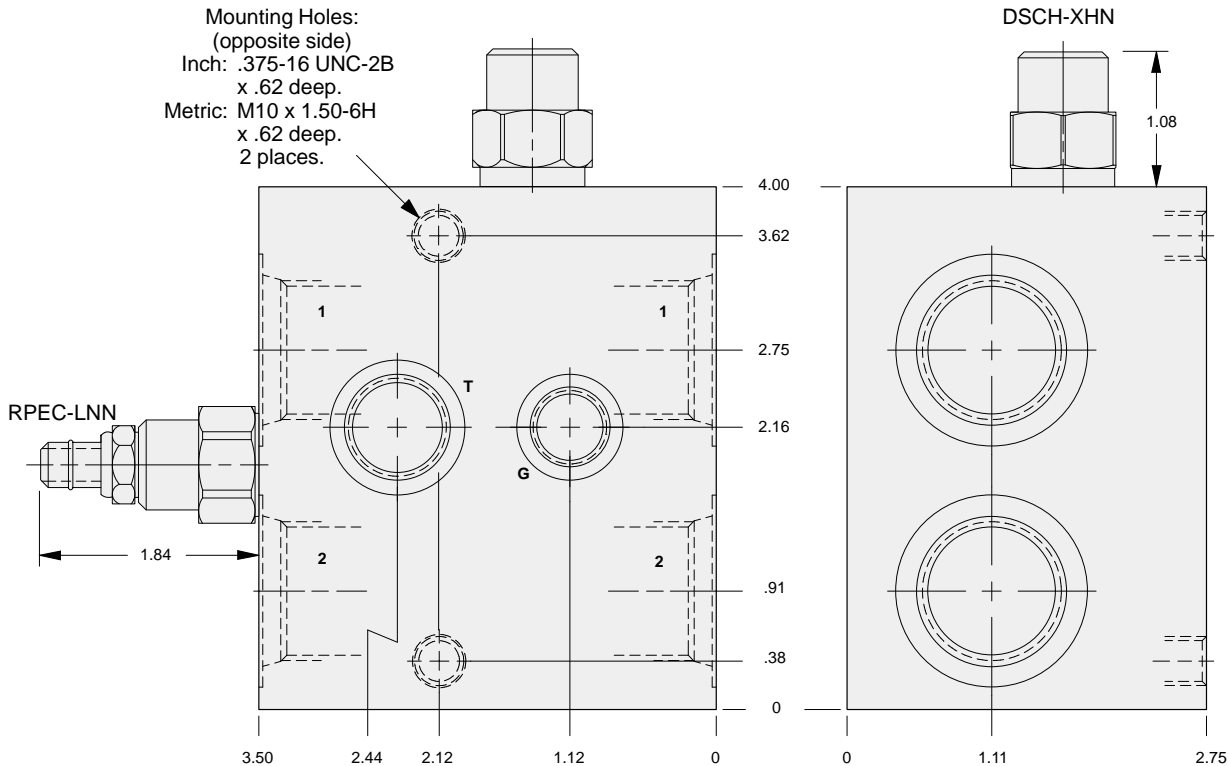
These SUN valve assemblies are for use in bleeding hot oil from the low pressure side of a hydrostatic transmission circuit. The hot oil can be cooled, filtered, or used as a source of oil for flushing other pump and motor cases. The hot oil is removed from the loop when the SUN RPEC cartridge is set below the hydrostatic charge pressure relief valve.

Mounting Hole Dimensions	Ports 1 & 2	Port T	Gage Port	ALUMINUM		DUCTILE IRON	
				Port Code	List Price*	Port Code	List Price*
Inch	SAE-10	SAE-8	SAE-6	K		K/S	
Inch	SAE-12	SAE-8	SAE-6	L		L/S	
Metric	.50 BSPP	.375 BSPP	.25 BSPP	V		V/S	
Metric	.75 BSPP	.375 BSPP	.25 BSPP	W		W/S	

*For part number and price for body only contact your local SUN distributor.



13



OPTIONS	XRDC - LNN - A*	
	CARTRIDGE RPEC Pg 1.06 For Viton Seals Change LNN to LNV.	PORTS See Chart above
	Customer Specified Setting Stamped on Hex	



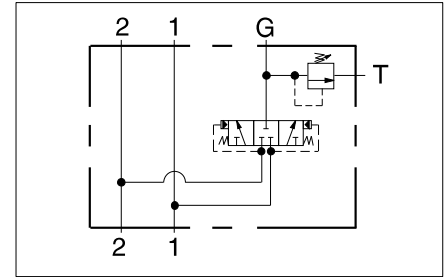
HOT OIL SHUTTLE AND RELIEF ASSEMBLY .75" SAE FLANGE PORT BODY



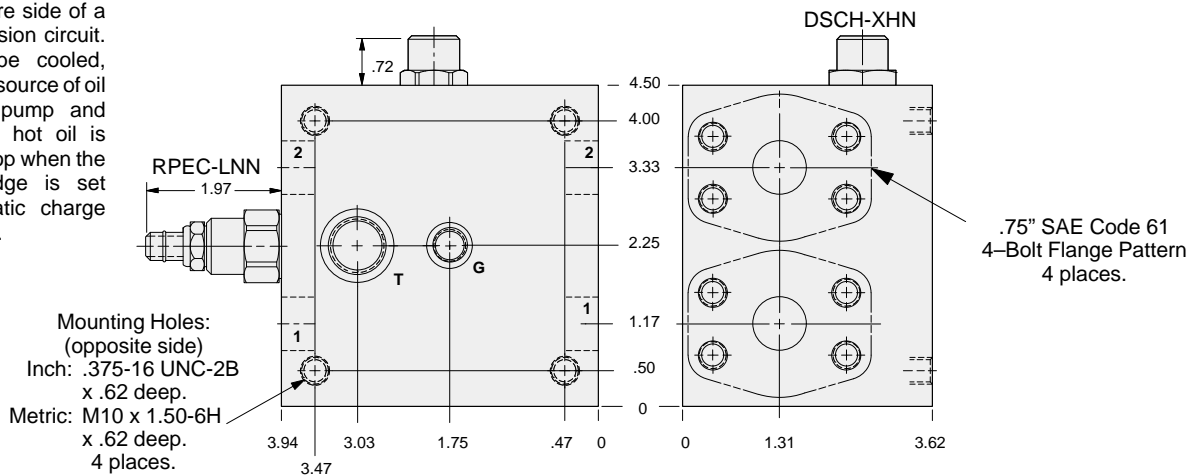
- Aluminum rated to 3000 psi and Ductile Iron rated to 5000 psi.
- Hot oil pressure can be confirmed and/or set with transmission in neutral.

Mounting Hole Dimensions	Ports 1 & 2	Port T	Gage Port	ALUMINUM		DUCTILE IRON	
				Port Code	List Price*	Port Code	List Price*
Inch	Code 61	SAE-8	SAE-6	O		O/S	
Metric	Code 61	.375 BSPP	.25 BSPP	O/M		O/T	

*For part number and price for body only contact your local SUN distributor.

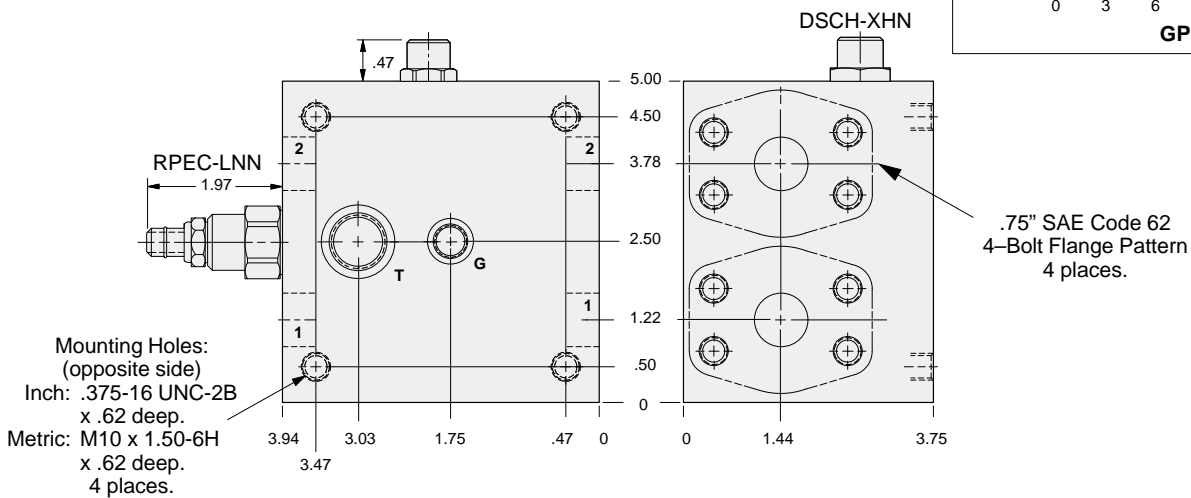
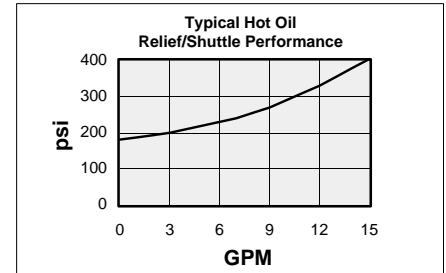


These SUN valve assemblies are for use in bleeding hot oil from the low pressure side of a hydrostatic transmission circuit. The hot oil can be cooled, filtered, or used as a source of oil for flushing other pump and motor cases. The hot oil is removed from the loop when the SUN RPEC cartridge is set below the hydrostatic charge pressure relief valve.



Mounting Hole Dimensions	Ports 1 & 2	Port T	Gage Port	ALUMINUM		DUCTILE IRON	
				Port Code	List Price*	Port Code	List Price*
Inch	Code 62	SAE-8	SAE-6	3		3/S	
Metric	Code 62	.375 BSPP	.25 BSPP	3/M		3/T	

*For part number and price for body only contact your local SUN distributor.



OPTIONS		XRDC - LNN - A*	
CARTRIDGE	RPEC Pg 1.06 For Viton Seals Change LNN to LNV.	Customer Specified Setting Stamped on Hex	PORTS See Chart above



HOT OIL SHUTTLE AND RELIEF ASSEMBLY INLINE BODY

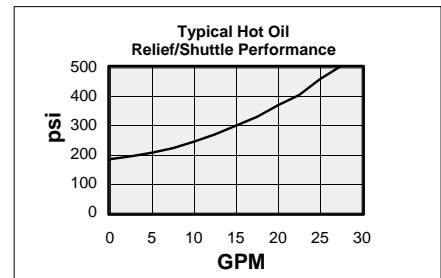
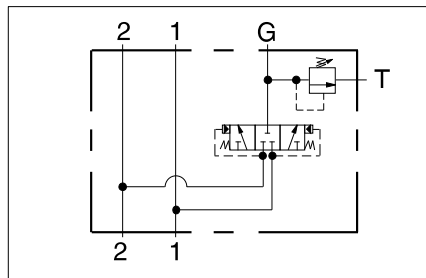


- Aluminum rated to 3000 psi and Ductile Iron rated to 5000 psi.
- Hot oil pressure can be confirmed and/or set with transmission in neutral.

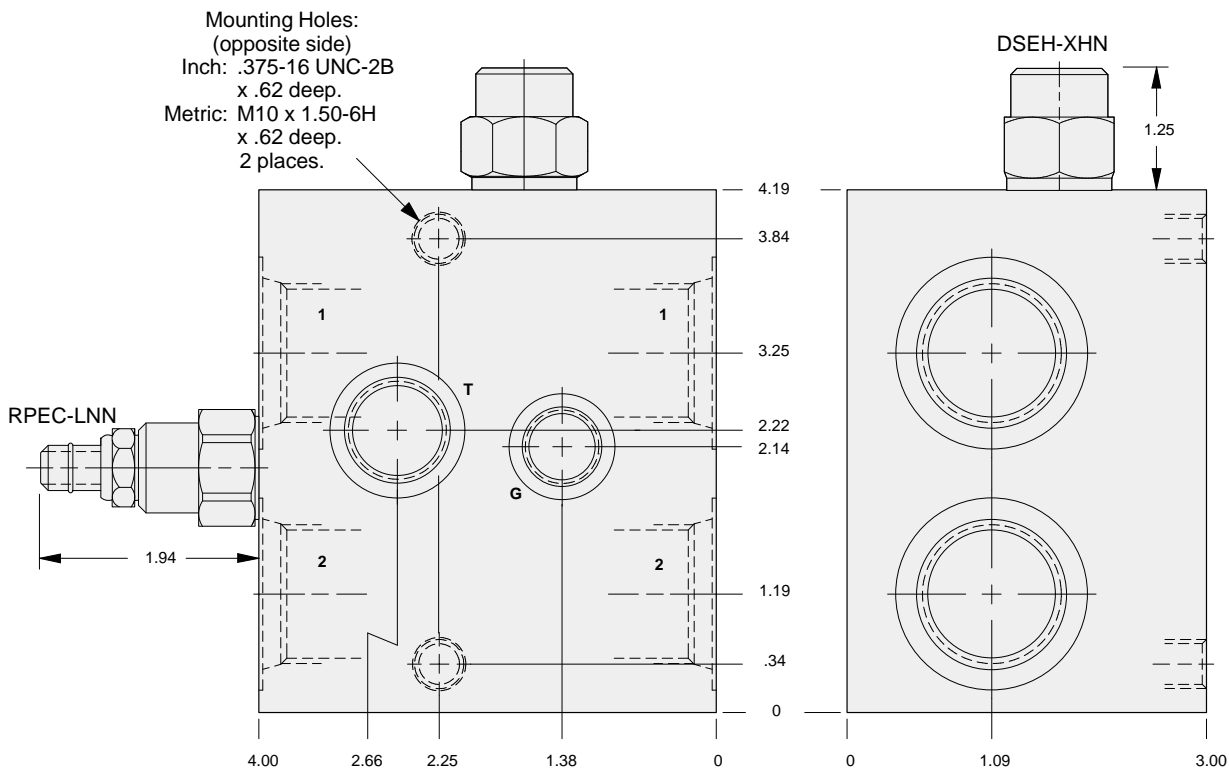
These SUN valve assemblies are for use in bleeding hot oil from the low pressure side of a hydrostatic transmission circuit. The hot oil can be cooled, filtered, or used as a source of oil for flushing other pump and motor cases. The hot oil is removed from the loop when the SUN RPEC cartridge is set below the hydrostatic charge pressure relief valve.

Mounting Hole Dimensions	Ports 1 & 2	Port T	Gage Port	ALUMINUM		DUCTILE IRON	
				Port Code	List Price*	Port Code	List Price*
Inch	SAE-12	SAE-10	SAE-6	L		L/S	
Inch	SAE-16	SAE-10	SAE-6	M		M/S	
Metric	.75 BSPP	.50 BSPP	.25 BSPP	W		W/S	
Metric	1.00 BSPP	.50 BSPP	.25 BSPP	X		X/S	

*For part number and price for body only contact your local SUN distributor.



13



OPTIONS	XRFC - LNN - A*		PORTS
	CARTRIDGE RPEC Pg 1.06 For Viton Seals Change LNN to LNV.	Customer Specified Setting Stamped on Hex	See Chart above



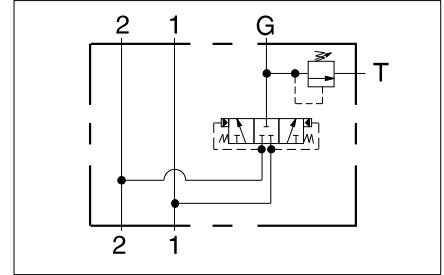
HOT OIL SHUTTLE AND RELIEF ASSEMBLY 1.00" SAE FLANGE PORT BODY



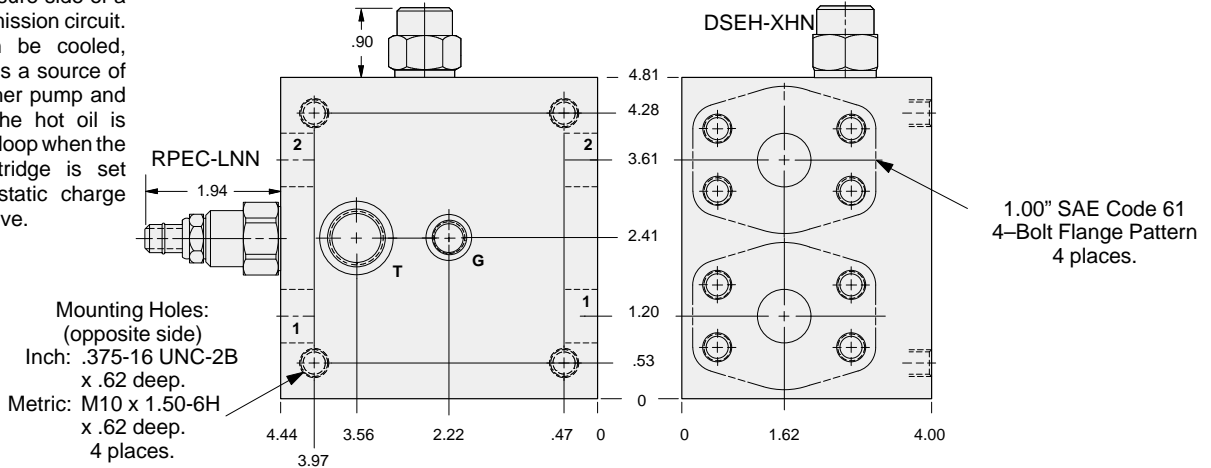
- Aluminum rated to 3000 psi and Ductile Iron rated to 5000 psi.
- Hot oil pressure can be confirmed and/or set with transmission in neutral.

Mounting Hole Dimensions	Ports 1 & 2	Port T	Gage Port	ALUMINUM		DUCTILE IRON	
				Port Code	List Price*	Port Code	List Price*
Inch	Code 61	SAE-10	SAE-6	P		P/S	
Metric	Code 61	.50 BSPP	.25 BSPP	P/M		P/T	

*For part number and price for body only contact your local SUN distributor.

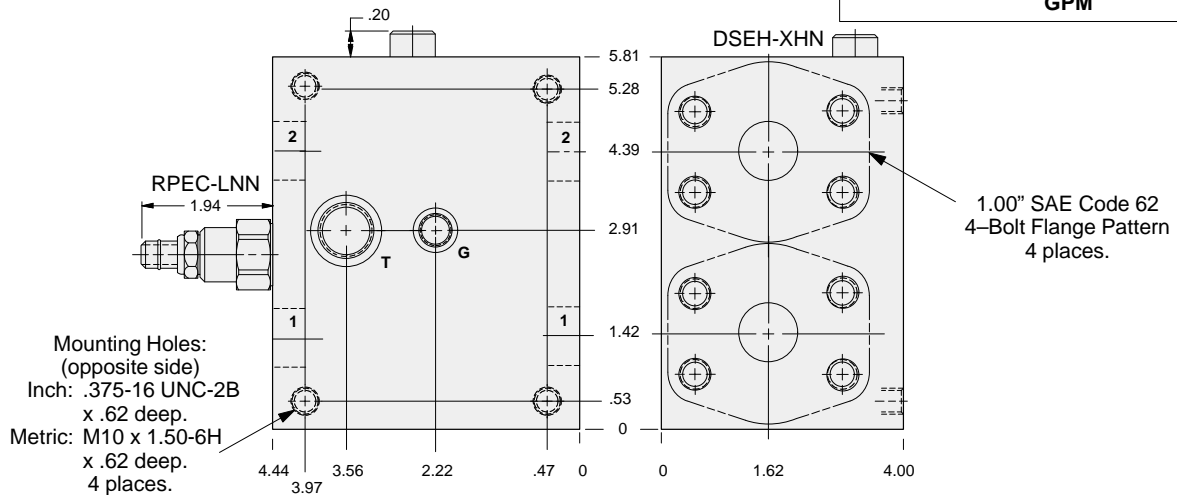
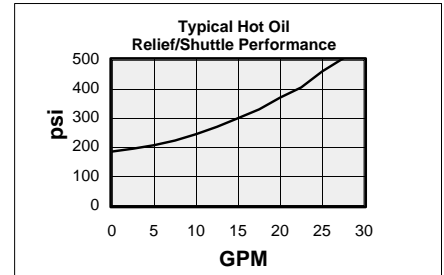


These SUN valve assemblies are for use in bleeding hot oil from the low pressure side of a hydrostatic transmission circuit. The hot oil can be cooled, filtered, or used as a source of oil for flushing other pump and motor cases. The hot oil is removed from the loop when the SUN RPEC cartridge is set below the hydrostatic charge pressure relief valve.



Mounting Hole Dimensions	Ports 1 & 2	Port T	Gage Port	ALUMINUM		DUCTILE IRON	
				Port Code	List Price*	Port Code	List Price*
Inch	Code 62	SAE-10	SAE-6	4		4/S	
Metric	Code 62	.50 BSPP	.25 BSPP	4/M		4/T	

*For part number and price for body only contact your local SUN distributor.



OPTIONS	XRFC - LNN - A*		PORTS
CARTRIDGE	RPEC Pg 1.06 For Viton Seals Change LNN to LNV.	Customer Specified Setting Stamped on Hex	See Chart above



HOT OIL SHUTTLE AND RELIEF ASSEMBLY INLINE BODY

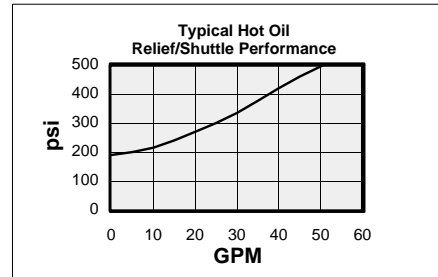
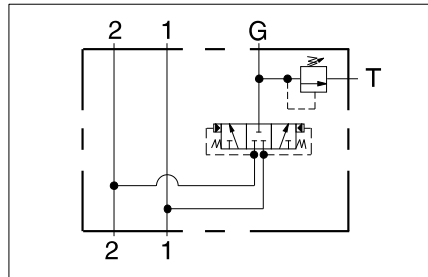


- Aluminum rated to 3000 psi and Ductile Iron rated to 5000 psi.
- Hot oil pressure can be confirmed and/or set with transmission in neutral.

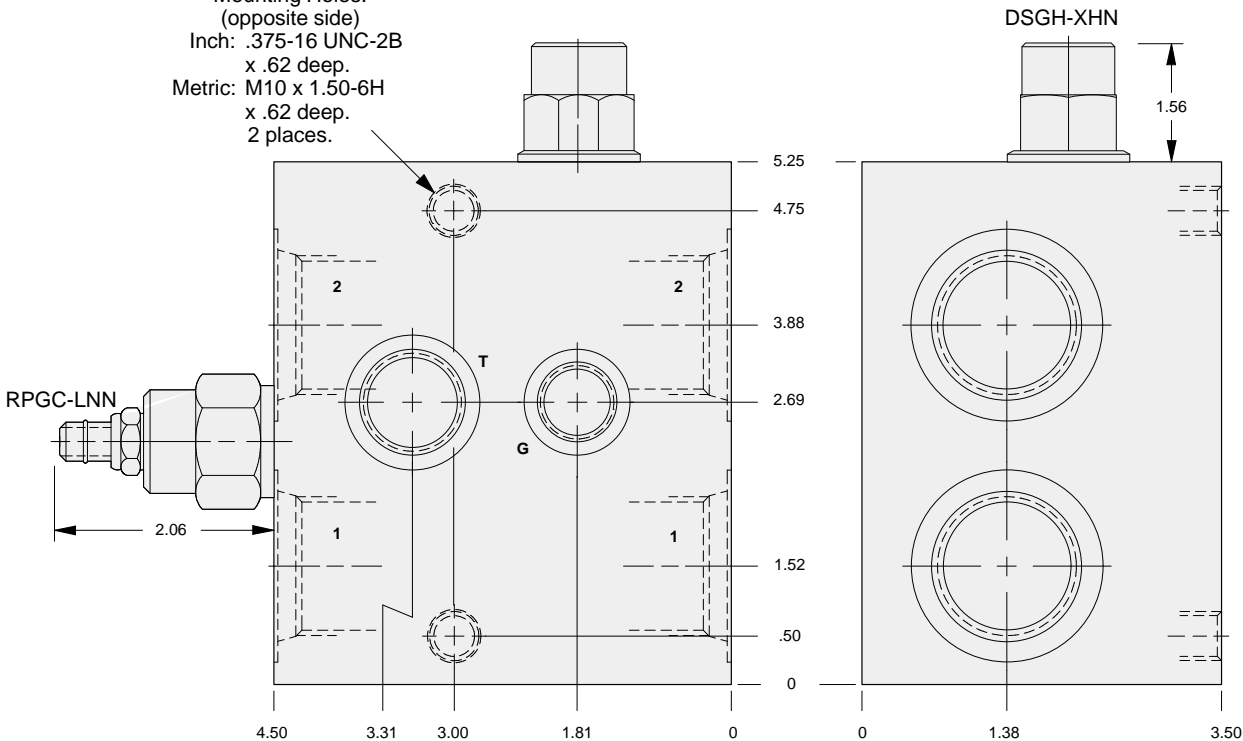
These SUN valve assemblies are for use in bleeding hot oil from the low pressure side of a hydrostatic transmission circuit. The hot oil can be cooled, filtered, or used as a source of oil for flushing other pump and motor cases. The hot oil is removed from the loop when the SUN RPEC cartridge is set below the hydrostatic charge pressure relief valve.

Mounting Hole Dimensions	Ports 1 & 2	Port T	Gage Port	ALUMINUM		DUCTILE IRON	
				Port Code	List Price*	Port Code	List Price*
Inch	SAE-16	SAE-12	SAE-6	M		M/S	
Metric	1.00 BSPB	.75 BSBP	.25 BSBP	X		X/S	

*For part number and price for body only contact your local SUN distributor.



Mounting Holes:
(opposite side)
Inch: .375-16 UNC-2B
x .62 deep.
Metric: M10 x 1.50-6H
x .62 deep.
2 places.



13

OPTIONS	XRHC - LNN - A*		
	CARTRIDGE		PORTS
	RPGC Pg 1.06 For Viton Seals Change LNN to LNV.	Customer Specified Setting Stamped on Hex	See Chart above



HOT OIL SHUTTLE AND RELIEF ASSEMBLY 1.25" SAE FLANGE PORT BODY

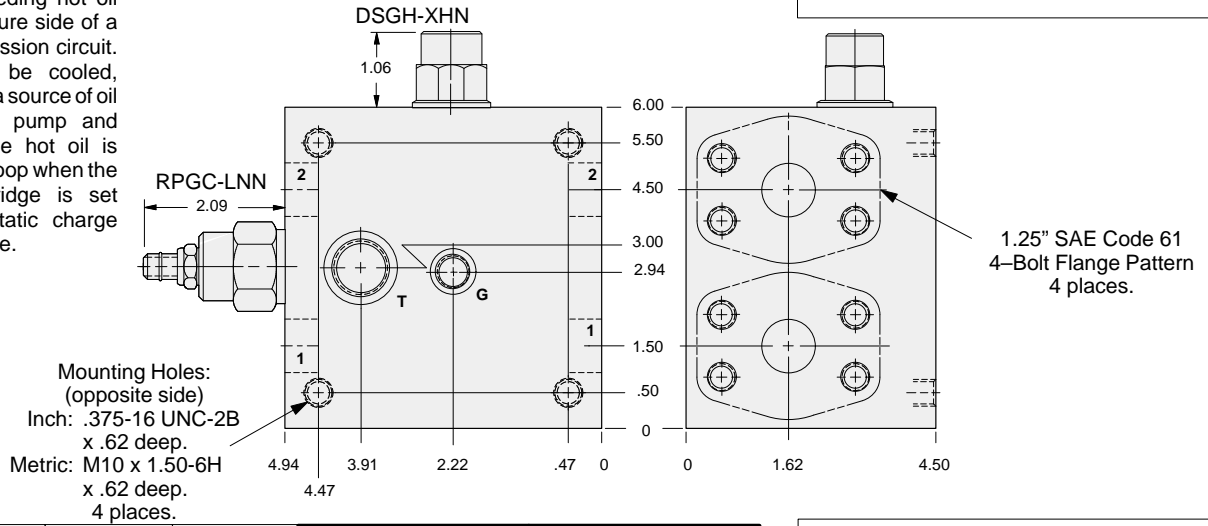
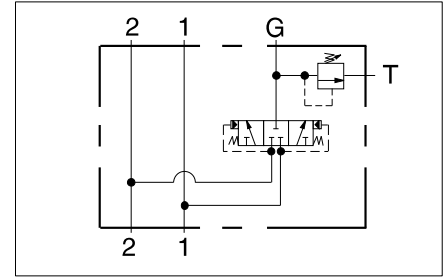


- Aluminum rated to 3000 psi and Ductile Iron rated to 5000 psi.
- Hot oil pressure can be confirmed and/or set with transmission in neutral.

Mounting Hole Dimensions	Ports 1 & 2	Port T	Gage Port	ALUMINUM		DUCTILE IRON	
				Port Code	List Price*	Port Code	List Price*
Inch	Code 61	SAE-12	SAE-6	Q		Q/S	
Metric	Code 61	.75 BSPP	.25 BSPP	Q/M		Q/T	

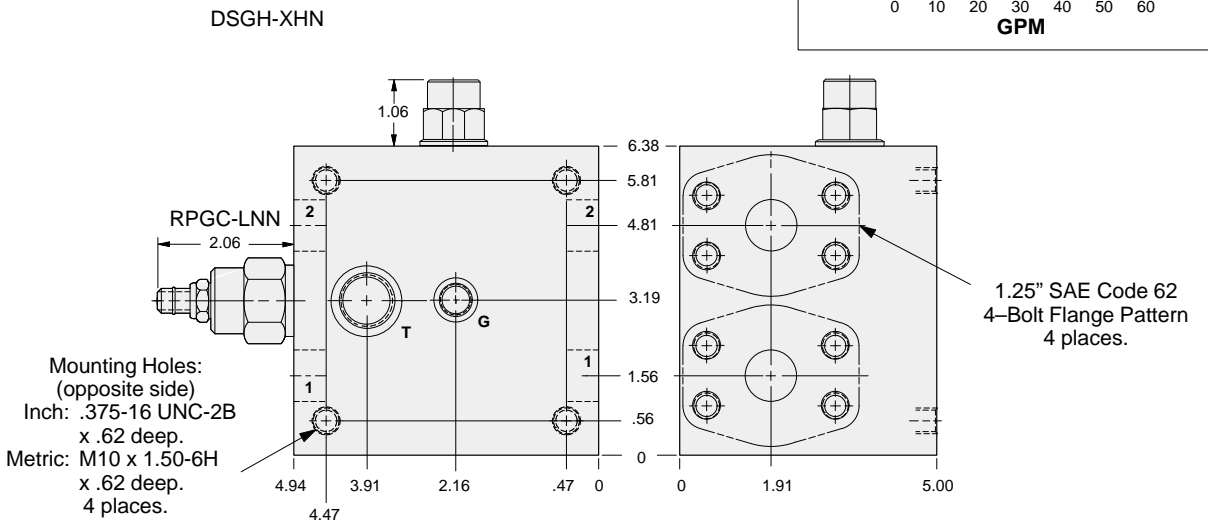
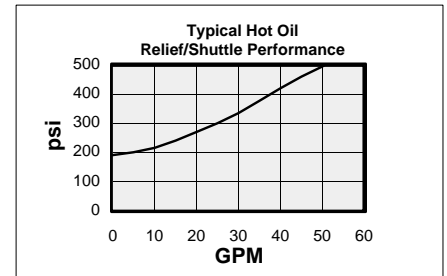
*For part number and price for body only contact your local SUN distributor.

These SUN valve assemblies are for use in bleeding hot oil from the low pressure side of a hydrostatic transmission circuit. The hot oil can be cooled, filtered, or used as a source of oil for flushing other pump and motor cases. The hot oil is removed from the loop when the SUN RPEC cartridge is set below the hydrostatic charge pressure relief valve.



Mounting Hole Dimensions	Ports 1 & 2	Port T	Gage Port	ALUMINUM		DUCTILE IRON	
				Port Code	List Price*	Port Code	List Price*
Inch	Code 62	SAE-12	SAE-6	5		5/S	
Metric	Code 62	.75 BSPP	.25 BSPP	5/M		5/T	

*For part number and price for body only contact your local SUN distributor.



OPTIONS	XRHC - LNN - A*		PORTS
	CARTRIDGE RPGC Pg 1.06 For Viton Seals Change LNN to LNV.	Customer Specified Setting Stamped on Hex	See Chart above



HOT OIL SHUTTLE AND RELIEF ASSEMBLY INLINE BODY

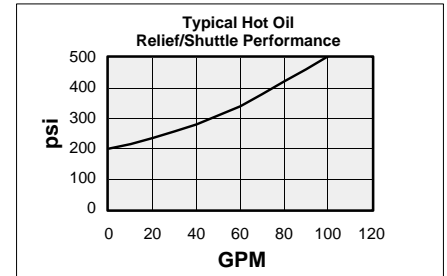
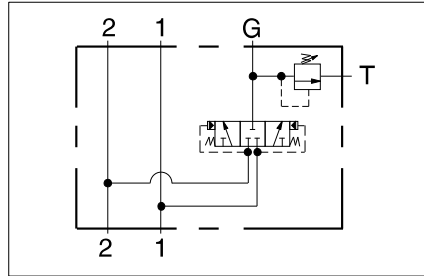


- Aluminum rated to 3000 psi and Ductile Iron rated to 5000 psi.
- Hot oil pressure can be confirmed and/or set with transmission in neutral.

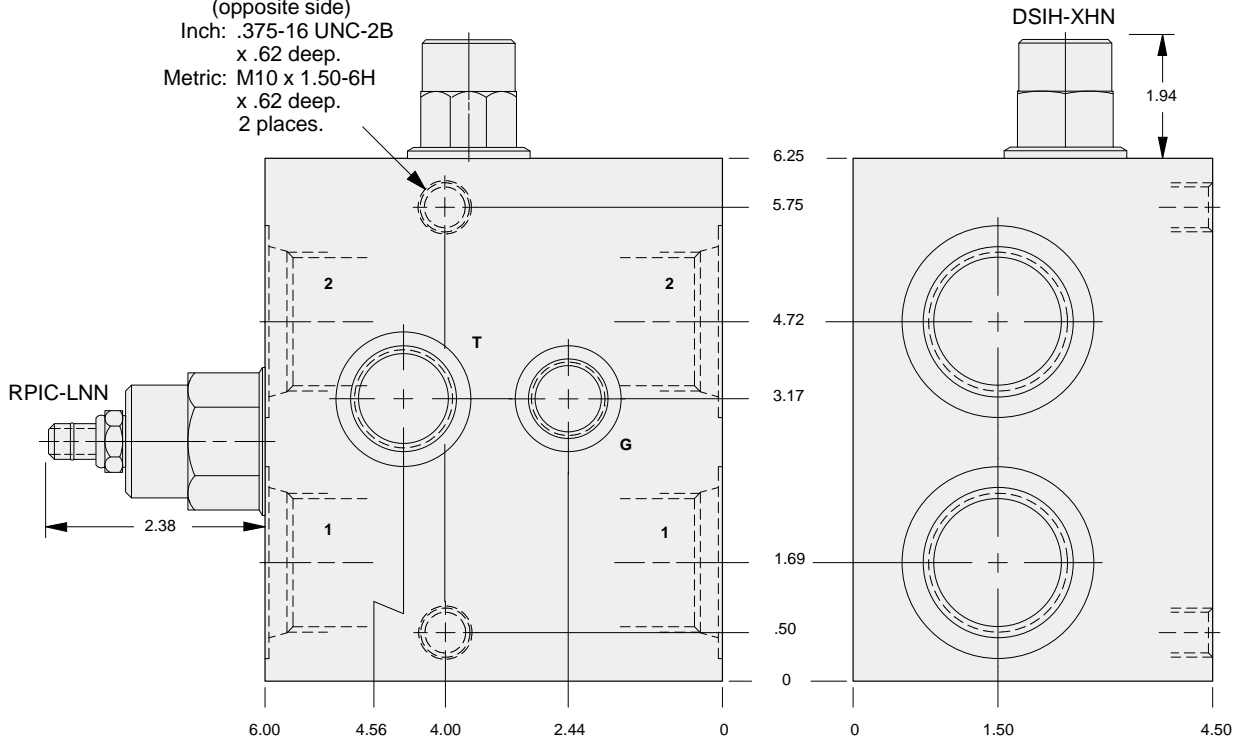
These SUN valve assemblies are for use in bleeding hot oil from the low pressure side of a hydrostatic transmission circuit. The hot oil can be cooled, filtered, or used as a source of oil for flushing other pump and motor cases. The hot oil is removed from the loop when the SUN RPEC cartridge is set below the hydrostatic charge pressure relief valve.

Mounting Hole Dimensions	Ports 1 & 2	Port T	Gage Port	ALUMINUM		DUCTILE IRON	
				Port Code	List Price*	Port Code	List Price*
Inch	SAE-20	SAE-16	SAE-6	M		M/S	
Metric	1.25 BSPB	1.00 BSBP	.25 BSBP	X		X/S	

*For part number and price for body only contact your local SUN distributor.



Mounting Holes:
(opposite side)
Inch: .375-16 UNC-2B
x .62 deep.
Metric: M10 x 1.50-6H
x .62 deep.
2 places.



13

OPTIONS	XRJC - LNN - A*		
	CARTRIDGE RPIC Pg 1.07 For Viton Seals Change LNN to LNV.	Customer Specified Setting Stamped on Hex	PORTS See Chart above



HOT OIL SHUTTLE AND RELIEF ASSEMBLY 1.50" SAE FLANGE PORT BODY

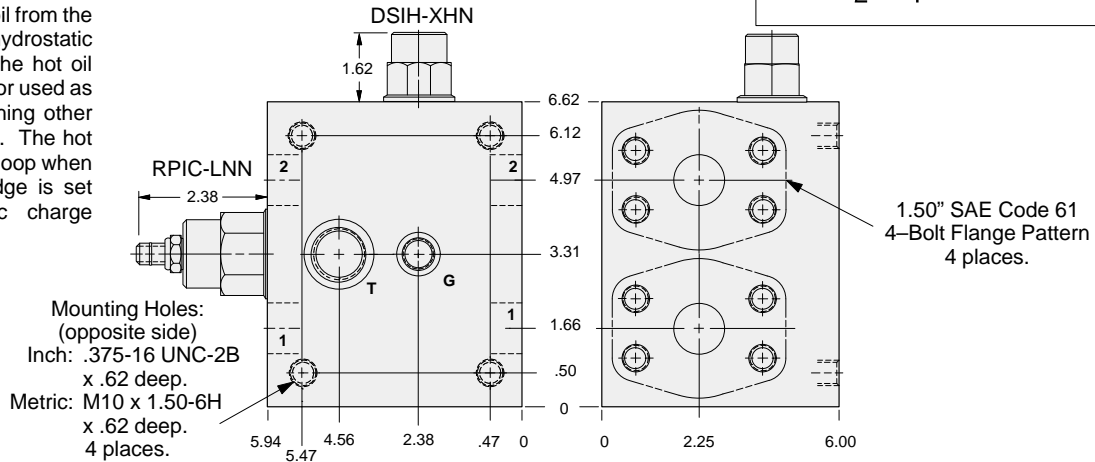
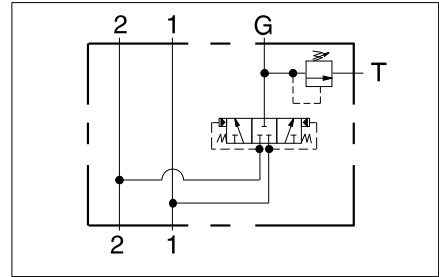


- Aluminum rated to 3000 psi and Ductile Iron rated to 5000 psi.
- Hot oil pressure can be confirmed and/or set with transmission in neutral.

Mounting Hole Dimensions	Ports 1 & 2	Port T	Gage Port	ALUMINUM		DUCTILE IRON	
				Port Code	List Price*	Port Code	List Price*
Inch	Code 61	SAE-16	SAE-6	R		R/S	
Metric	Code 61	1.00 BSPP	.25 BSPP	R/M		R/T	

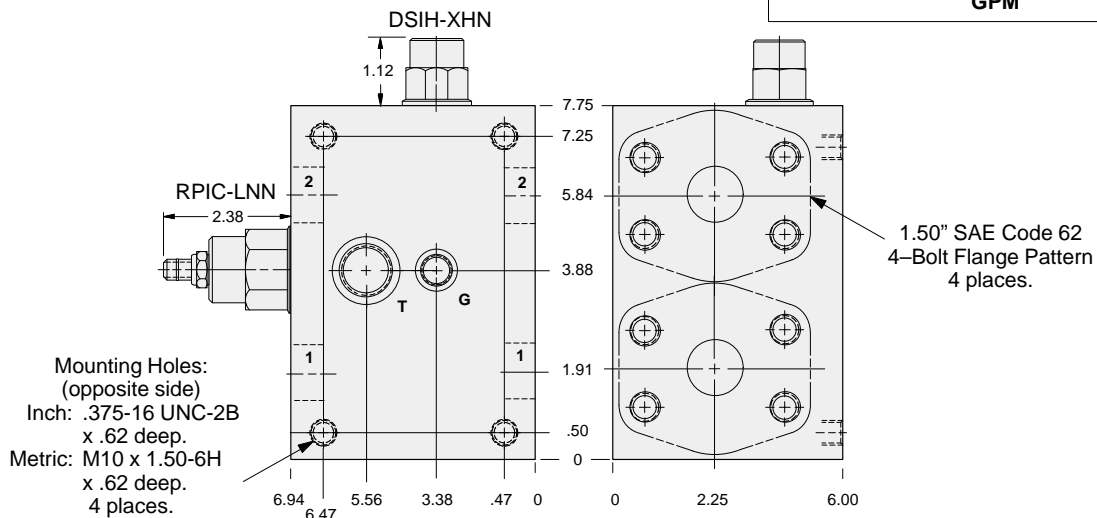
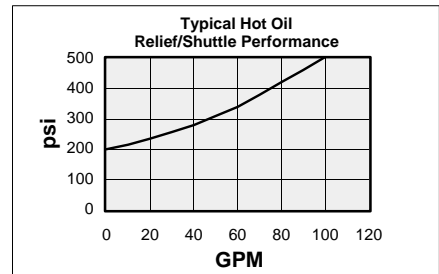
*For part number and price for body only contact your local SUN distributor.

These SUN valve assemblies are for use in bleeding hot oil from the low pressure side of a hydrostatic transmission circuit. The hot oil can be cooled, filtered, or used as a source of oil for flushing other pump and motor cases. The hot oil is removed from the loop when the SUN RPEC cartridge is set below the hydrostatic charge pressure relief valve.



Mounting Hole Dimensions	Ports 1 & 2	Port T	Gage Port	ALUMINUM		DUCTILE IRON	
				Port Code	List Price*	Port Code	List Price*
Inch	Code 62	SAE-16	SAE-6	6		6/S	
Metric	Code 62	1.00 BSPP	.25 BSPP	6/M		6/T	

*For part number and price for body only contact your local SUN distributor.



13

OPTIONS	XRJC - LNN - A*
CARTRIDGE RPIC Pg 1.07 For Viton Seals Change LNN to LNV.	Customer Specified Setting Stamped on Hex
PORTS See Chart above	



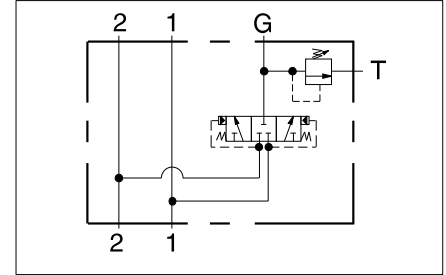
HOT OIL SHUTTLE AND RELIEF ASSEMBLY 2.00" SAE FLANGE PORT BODY



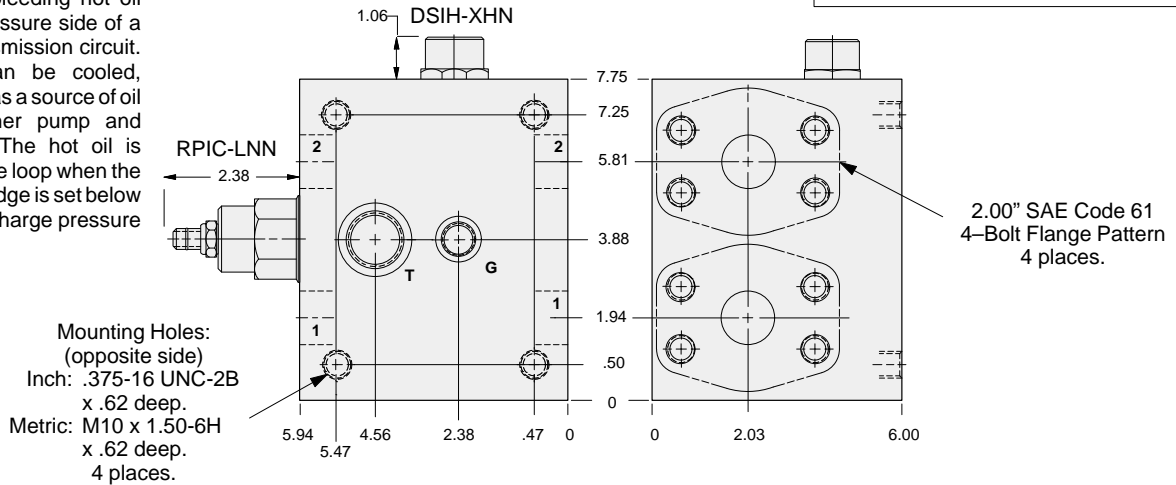
- Aluminum rated to 3000 psi and Ductile Iron rated to 5000 psi.
- Hot oil pressure can be confirmed and/or set with transmission in neutral.

Mounting Hole Dimensions	Ports 1 & 2	Port T	Gage Port	ALUMINUM		DUCTILE IRON	
				Port Code	List Price*	Port Code	List Price*
Inch	Code 61	SAE-16	SAE-6	S		S/S	
Metric	Code 61	1.00 BSPP	.25 BSPP	S/M		S/T	

*For part number and price for body only contact your local SUN distributor.

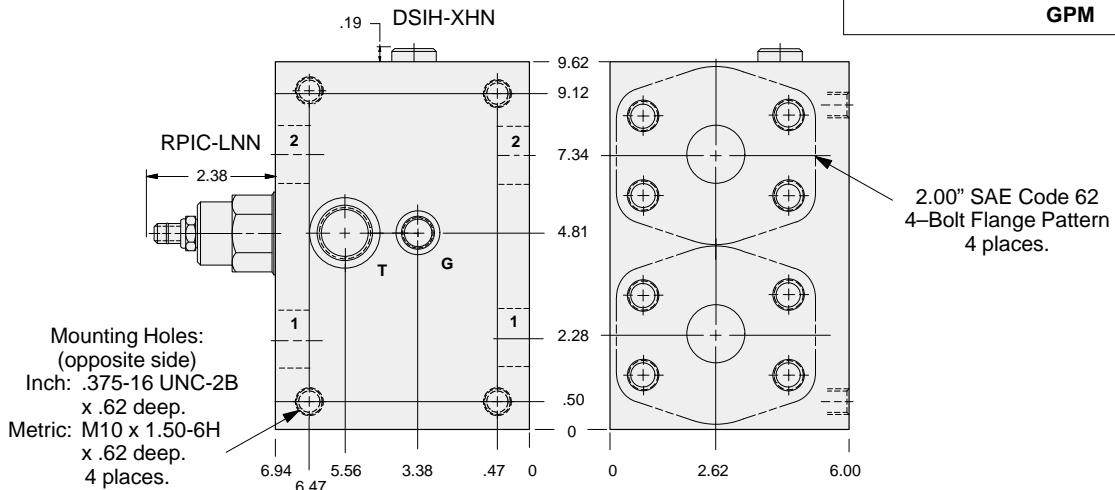
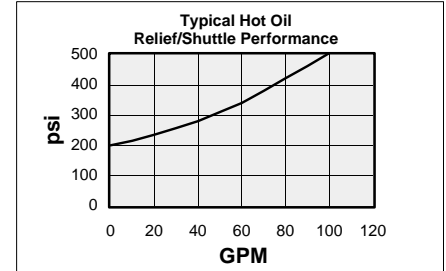


These SUN valve assemblies are for use in bleeding hot oil from the low pressure side of a hydrostatic transmission circuit. The hot oil can be cooled, filtered, or used as a source of oil for flushing other pump and motor cases. The hot oil is removed from the loop when the SUN RPIC cartridge is set below the hydrostatic charge pressure relief valve.



Mounting Hole Dimensions	Ports 1 & 2	Port T	Gage Port	ALUMINUM		DUCTILE IRON	
				Port Code	List Price*	Port Code	List Price*
Inch	Code 62	SAE-16	SAE-6	8		8/S	
Metric	Code 62	1.00 BSPP	.25 BSPP	8/M		8/T	

*For part number and price for body only contact your local SUN distributor.



OPTIONS	XRJC - LNN - A*	
CARTRIDGE	RPIC Pg 1.07 For Viton Seals Change LNN to LNV.	PORTS See Chart above
	Customer Specified Setting Stamped on Hex	