



HYDROSTATIC TRANSMISSION ASSEMBLY INLINE BODY



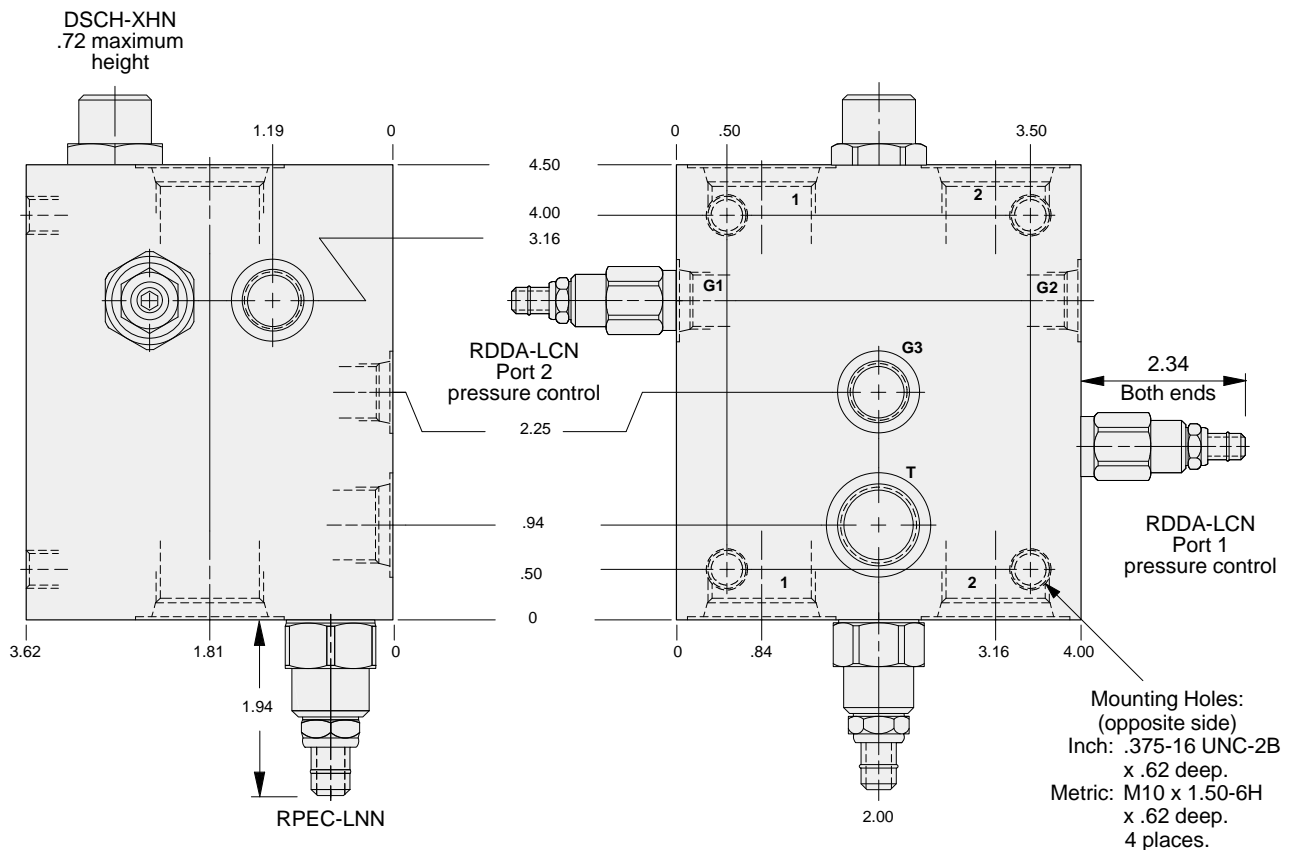
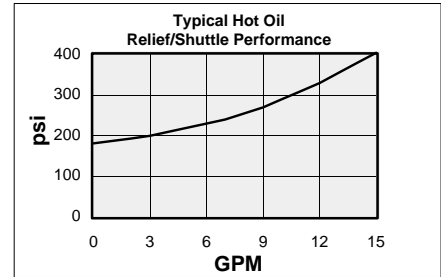
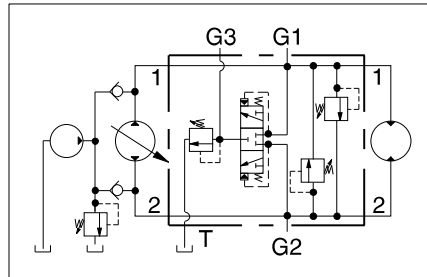
- Aluminum rated to 3000 psi and Ductile Iron rated to 5000 psi.
- Hot oil pressure can be confirmed and/or set with transmission in neutral.

These SUN valve assemblies are for use with hydrostatic transmissions to provide overload relief valve protection for the main circuit in both directions. Additionally, an auxiliary shuttle valve allows bleeding of hot oil from the low pressure side. Hot oil can be cooled, filtered, or used as a source of oil for flushing other pump and motor cases. Hot oil is removed from the loop when the SUN RPEC cartridge is set below the hydrostatic charge pressure relief valve.

NOTE: A mechanical brake is recommended to positively lock any stopped live load.

Mounting Hole Dimensions	Ports 1 & 2	Port T	Ports G1, G2, & G3	ALUMINUM		DUCTILE IRON	
				Port Code	List Price*	Port Code	List Price*
Inch	SAE-12	SAE-8	.25 NPTF	L		L/S	
Metric	.75 BSPP	.375 BSPP	.25 BSPP	W		W/S	

*For part number and price for body only contact your local SUN distributor.



13

OPTIONS	XRDB - LCN - A*			
	CARTRIDGE RDDA Pg 1.10 For Viton Seals Change LCN to LCV.		Customer Specified Setting Stamped on Hex	PORTS See Chart above



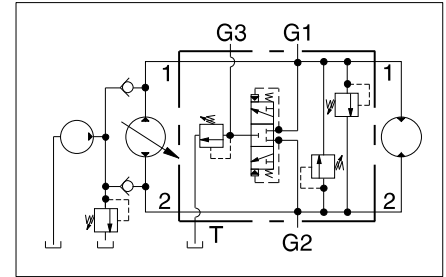
HYDROSTATIC TRANSMISSION ASSEMBLY .75" SAE FLANGE PORT BODY



- Aluminum rated to 3000 psi and Ductile Iron rated to 5000 psi.
- Hot oil pressure can be confirmed and/or set with transmission in neutral.

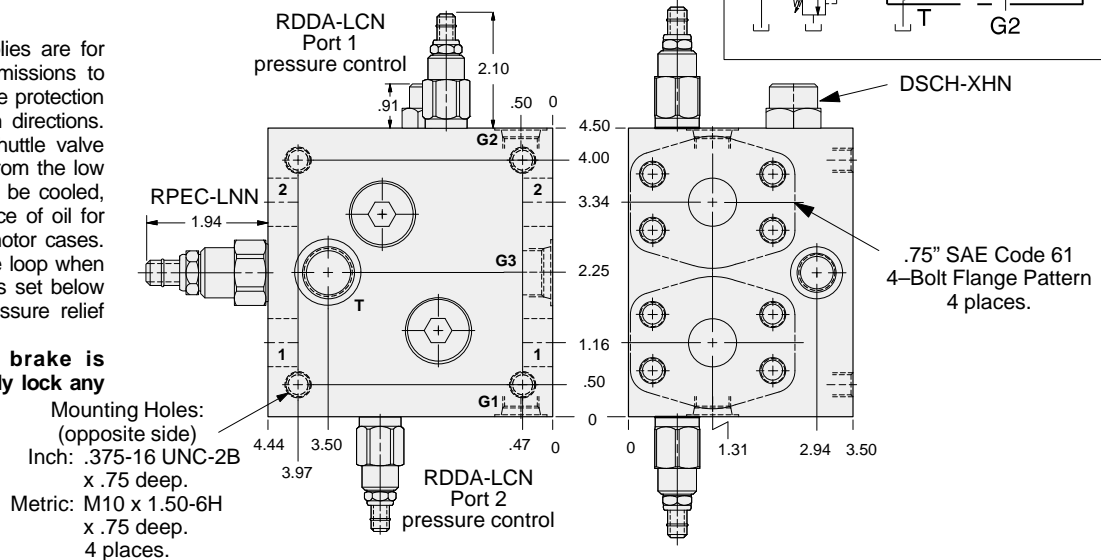
Mounting Hole Dimensions	Ports 1 & 2	Port T	Ports G1, G2, & G3	ALUMINUM		DUCTILE IRON	
				Port Code	List Price*	Port Code	List Price*
Inch	Code 61	SAE-8	SAE-6	O		O/S	
Metric	Code 61	.375 BSPP	.25 BSPP	O/M		O/T	

*For part number and price for body only contact your local SUN distributor.



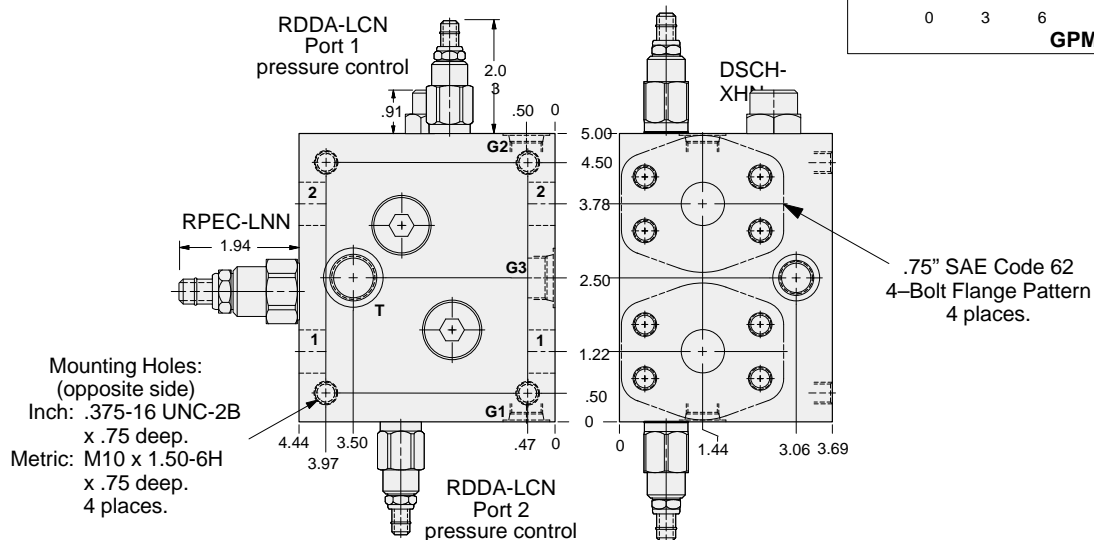
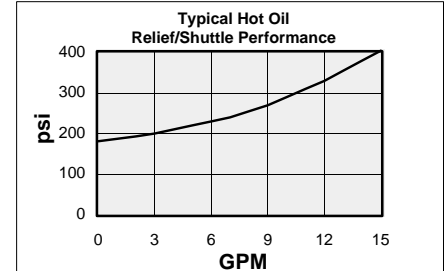
These SUN valve assemblies are for use with hydrostatic transmissions to provide overload relief valve protection for the main circuit in both directions. Additionally, an auxiliary shuttle valve allows bleeding of hot oil from the low pressure side. Hot oil can be cooled, filtered, or used as a source of oil for flushing other pump and motor cases. Hot oil is removed from the loop when the SUN RPEC cartridge is set below the hydrostatic charge pressure relief valve.

NOTE: A mechanical brake is recommended to positively lock any stopped live load.



Mounting Hole Dimensions	Ports 1 & 2	Port T	Ports G1, G2, & G3	ALUMINUM		DUCTILE IRON	
				Port Code	List Price*	Port Code	List Price*
Inch	Code 62	SAE-8	SAE-6	3		3/S	
Metric	Code 62	.375 BSPP	.25 BSPP	3/M		3/T	

*For part number and price for body only contact your local SUN distributor.



OPTIONS	XRDB - LCN - A*	PORTS
CARTRIDGE RDDA Pg 1.10 For Viton Seals Change LCN to LCV.	Customer Specified Setting Stamped on Hex	See Chart above



HYDROSTATIC TRANSMISSION ASSEMBLY INLINE BODY



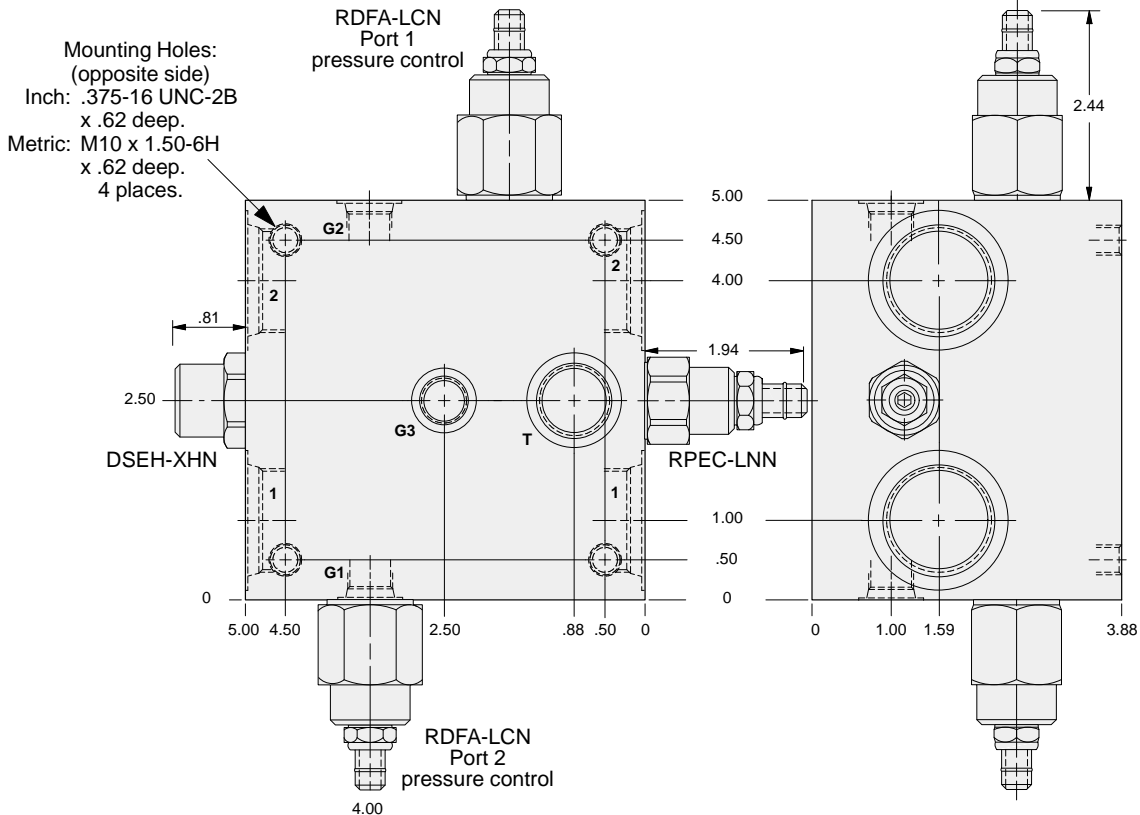
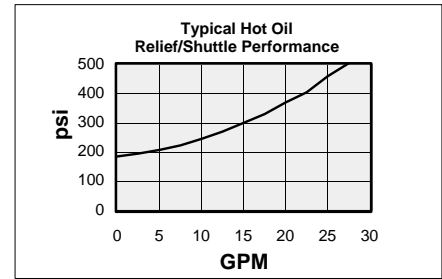
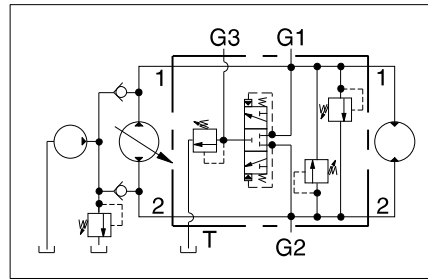
- Aluminum rated to 3000 psi and Ductile Iron rated to 5000 psi.
- Hot oil pressure can be confirmed and/or set with transmission in neutral.

These SUN valve assemblies are for use with hydrostatic transmissions to provide overload relief valve protection for the main circuit in both directions. Additionally, an auxiliary shuttle valve allows bleeding of hot oil from the low pressure side. Hot oil can be cooled, filtered, or used as a source of oil for flushing other pump and motor cases. Hot oil is removed from the loop when the SUN RPEC cartridge is set below the hydrostatic charge pressure relief valve.

NOTE: A mechanical brake is recommended to positively lock any stopped live load.

Mounting Hole Dimensions	Ports 1 & 2	Port T	Ports G1, G2, & G3	ALUMINUM		DUCTILE IRON	
				Port Code	List Price*	Port Code	List Price*
Inch	SAE-16	SAE-10	SAE-6	M		M/S	
Metric	1.00 BSPP	.50 BSPP	.25 BSPP	X		X/S	

*For part number and price for body only contact your local SUN distributor.



13

OPTIONS	XRFB - LCN - A*	
	CARTRIDGE	PORTS
	RDFA Pg 1.10 For Viton Seals Change LCN to LCV.	Customer Specified Setting Stamped on Hex See Chart above



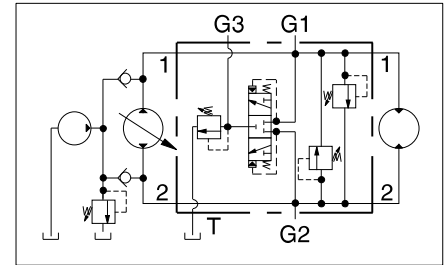
HYDROSTATIC TRANSMISSION ASSEMBLY 1.00" SAE FLANGE PORT BODY



- Aluminum rated to 3000 psi and Ductile Iron rated to 5000 psi.
- Hot oil pressure can be confirmed and/or set with transmission in neutral.

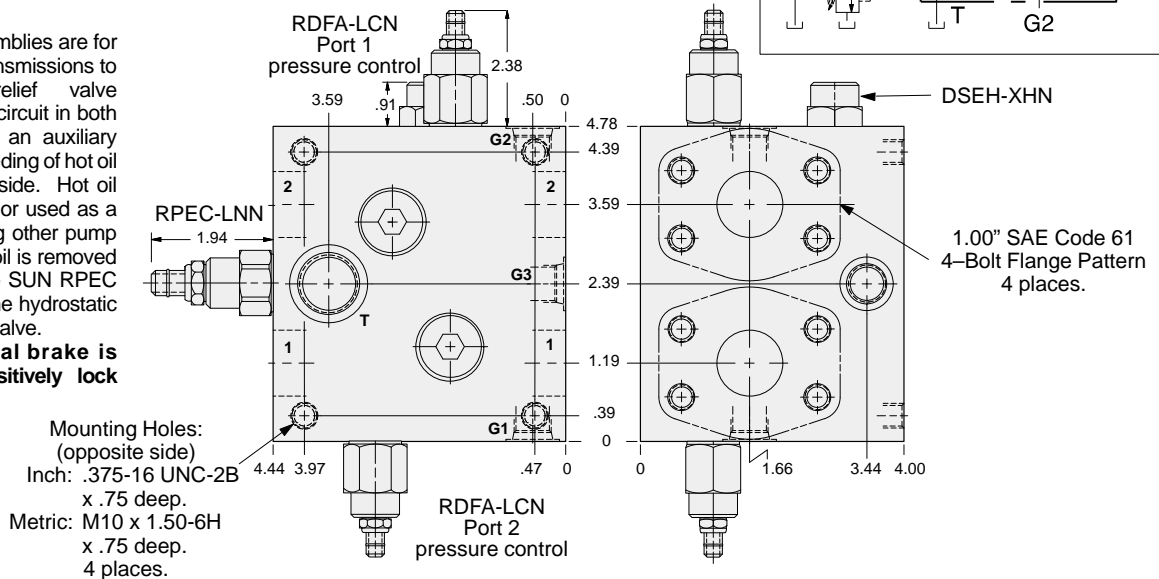
Mounting Hole Dimensions	Ports 1 & 2	Port T	Ports G1, G2, & G3	ALUMINUM		DUCTILE IRON	
				Port Code	List Price*	Port Code	List Price*
Inch	Code 61	SAE-10	SAE-6	P		P/S	
Metric	Code 61	.50 BSPP	.25 BSPP	P/M		P/T	

*For part number and price for body only contact your local SUN distributor.



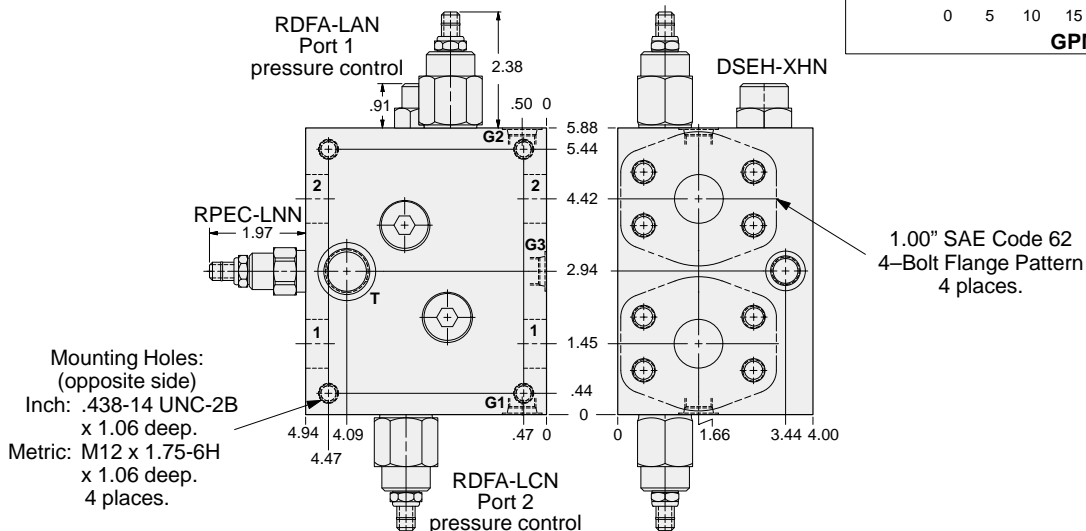
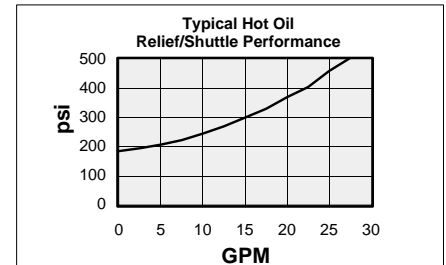
These SUN valve assemblies are for use with hydrostatic transmissions to provide overload relief valve protection for the main circuit in both directions. Additionally, an auxiliary shuttle valve allows bleeding of hot oil from the low pressure side. Hot oil can be cooled, filtered, or used as a source of oil for flushing other pump and motor cases. Hot oil is removed from the loop when the SUN RPEC cartridge is set below the hydrostatic charge pressure relief valve.

NOTE: A mechanical brake is recommended to positively lock any stopped live load.



Mounting Hole Dimensions	Ports 1 & 2	Port T	Ports G1, G2, & G3	ALUMINUM		DUCTILE IRON	
				Port Code	List Price*	Port Code	List Price*
Inch	Code 62	SAE-10	SAE-6	4		4/S	
Metric	Code 62	.50 BSPP	.25 BSPP	4/M		4/T	

*For part number and price for body only contact your local SUN distributor.



OPTIONS	XRFB - LCN - A*	
	CARTRIDGE	PORTS
	RDFA Pg 1.10 For Viton Seals Change LCN to LCV.	Customer Specified Setting Stamped on Hex See Chart above



HYDROSTATIC TRANSMISSION ASSEMBLY 1.25" SAE CODE 61 FLANGE PORT BODY



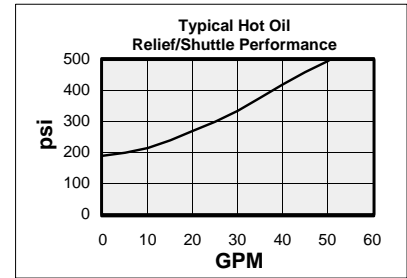
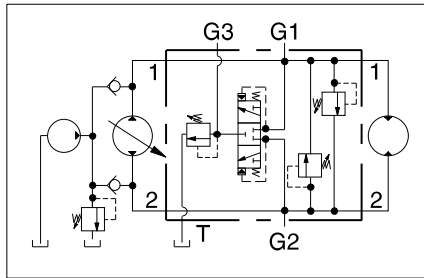
- Aluminum rated to 3000 psi and Ductile Iron rated to 5000 psi.
- Hot oil pressure can be confirmed and/or set with transmission in neutral.

These SUN valve assemblies are for use with hydrostatic transmissions to provide overload relief valve protection for the main circuit in both directions. Additionally, an auxiliary shuttle valve allows bleeding of hot oil from the low pressure side. Hot oil can be cooled, filtered, or used as a source of oil for flushing other pump and motor cases. Hot oil is removed from the loop when the SUN RPEC cartridge is set below the hydrostatic charge pressure relief valve.

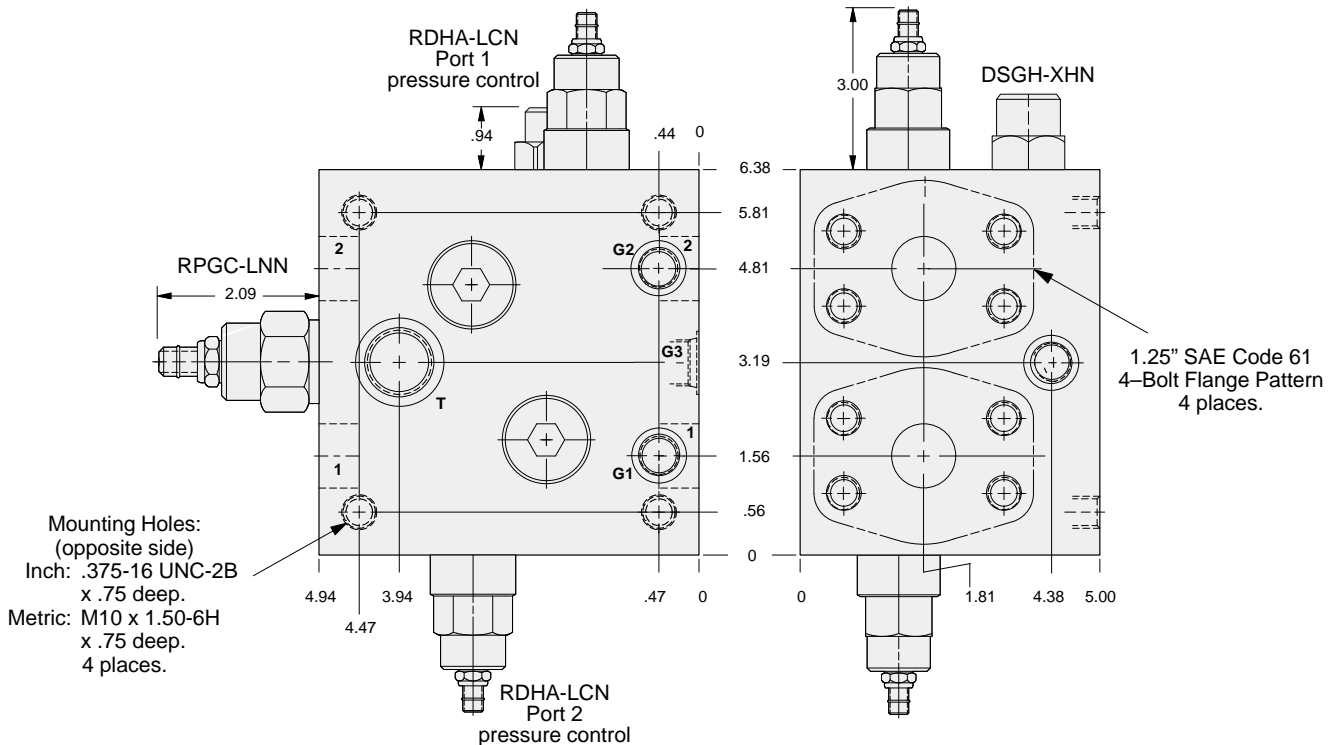
NOTE: A mechanical brake is recommended to positively lock any stopped live load.

Mounting Hole Dimensions	Port T	Ports G1, G2, & G3	ALUMINUM		DUCTILE IRON	
			Port Code	List Price*	Port Code	List Price*
Inch	SAE-12	SAE-6	Q		Q/S	
Metric	.75 BSPP	.25 BSPP	Q/M		Q/T	

*For part number and price for body only contact your local SUN distributor.



13



OPTIONS	XRHB - LCN - A*	
	CARTRIDGE	PORTS
	RDHA Pg 1.11 For Viton Seals Change LCN to LCV.	Customer Specified Setting Stamped on Hex See Chart above



HYDROSTATIC TRANSMISSION ASSEMBLY 1.25" SAE CODE 62 FLANGE PORT BODY



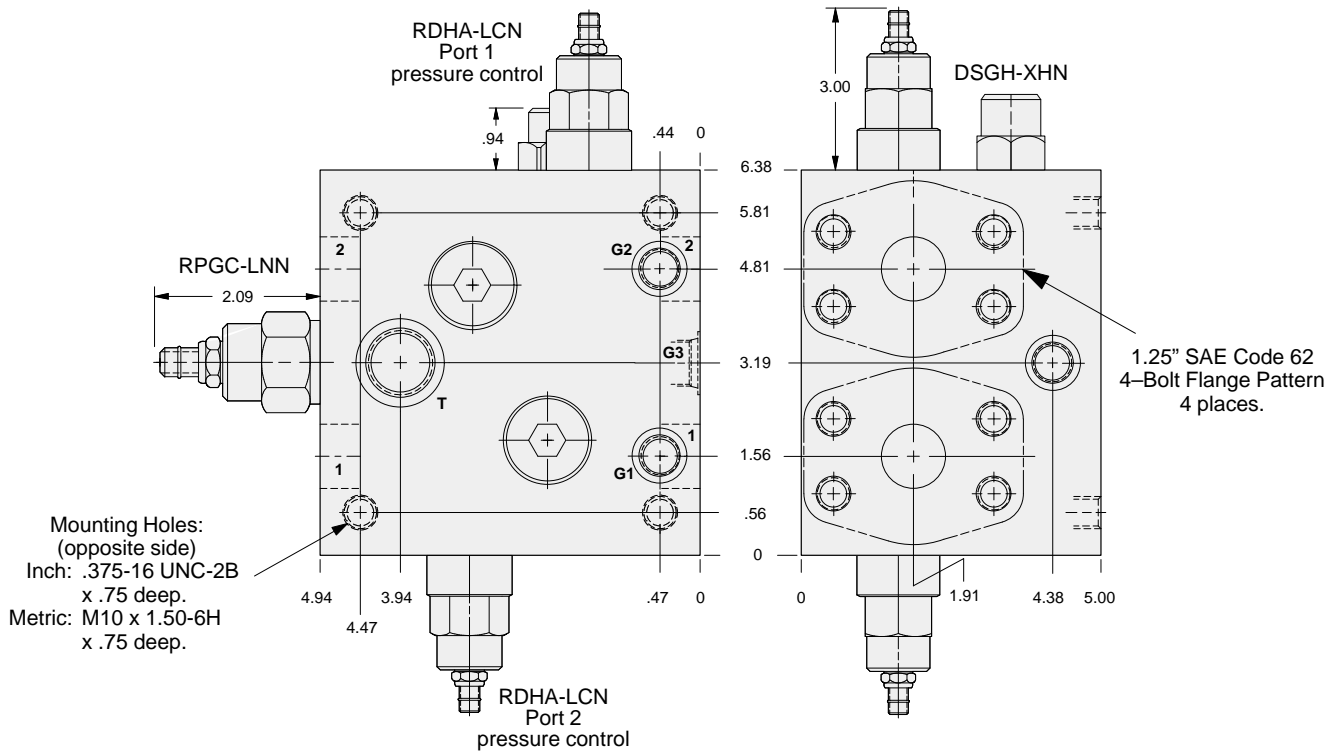
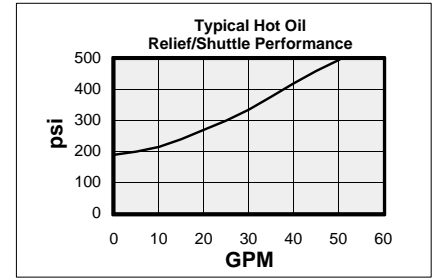
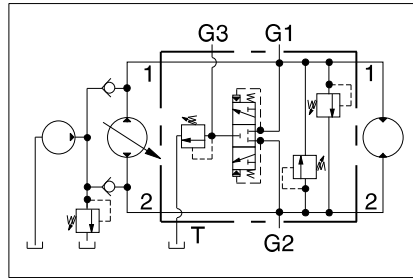
- Aluminum rated to 3000 psi and Ductile Iron rated to 5000 psi.
- Hot oil pressure can be confirmed and/or set with transmission in neutral.

These SUN valve assemblies are for use with hydrostatic transmissions to provide overload relief valve protection for the main circuit in both directions. Additionally, an auxiliary shuttle valve allows bleeding of hot oil from the low pressure side. Hot oil can be cooled, filtered, or used as a source of oil for flushing other pump and motor cases. Hot oil is removed from the loop when the SUN RPEC cartridge is set below the hydrostatic charge pressure relief valve.

NOTE: A mechanical brake is recommended to positively lock any stopped live load.

Mounting Hole Dimensions	Port T	Ports G1, G2, & G3	ALUMINUM		DUCTILE IRON	
			Port Code	List Price*	Port Code	List Price*
Inch	SAE-12	SAE-6	5		5/S	
Metric	.75 BSPP	.25 BSPP	5/M		5/T	

*For part number and price for body only contact your local SUN distributor.



13

OPTIONS	XRHB - LCN - A*		
	CARTRIDGE	Customer Specified Setting Stamped on Hex	PORTS
	RDHA Pg 1.11 For Viton Seals Change LCN to LCV.		See Chart above



HYDROSTATIC TRANSMISSION ASSEMBLY 1.50" SAE FLANGE PORT BODY



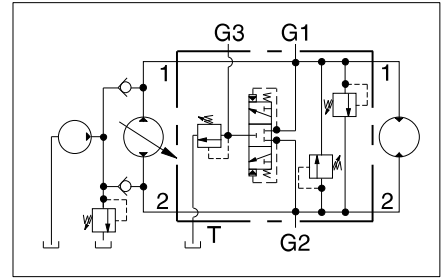
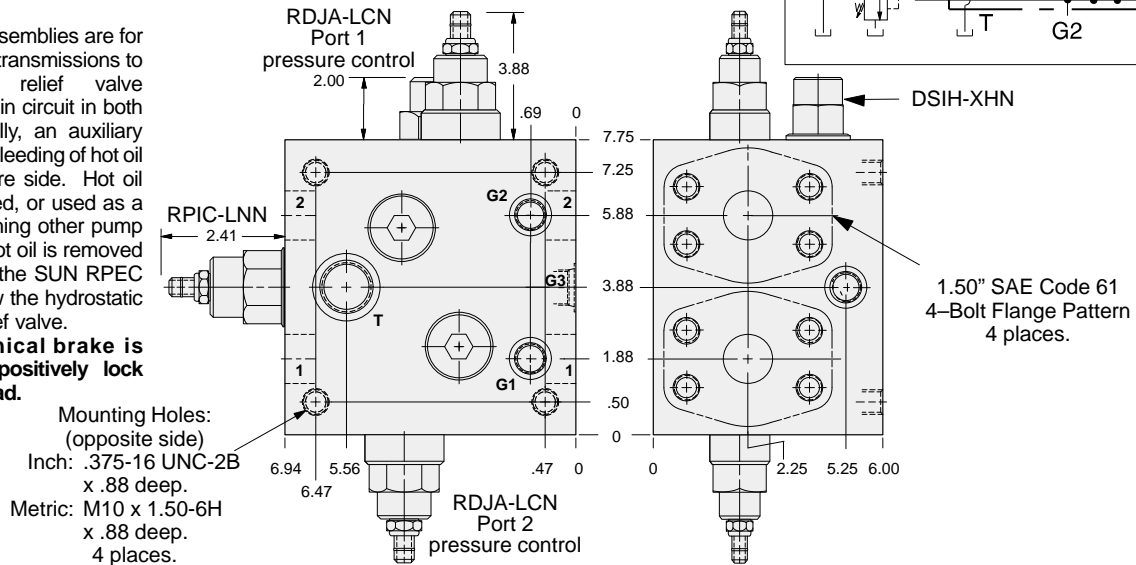
- Aluminum rated to 3000 psi and Ductile Iron rated to 5000 psi.
- Hot oil pressure can be confirmed and/or set with transmission in neutral.

Mounting Hole Dimensions	Ports 1 & 2	Port T	Ports G1, G2, & G3	ALUMINUM		DUCTILE IRON	
				Port Code	List Price*	Port Code	List Price*
Inch	Code 61	SAE-16	SAE-6	R		R/S	
Metric	Code 61	1.00 BSPP	.25 BSPP	R/M		R/T	

*For part number and price for body only contact your local SUN distributor.

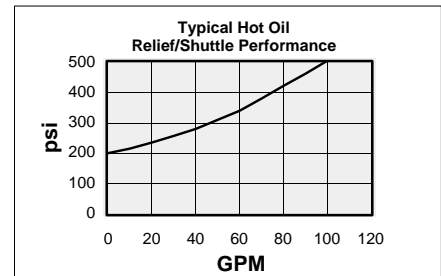
These SUN valve assemblies are for use with hydrostatic transmissions to provide overload relief valve protection for the main circuit in both directions. Additionally, an auxiliary shuttle valve allows bleeding of hot oil from the low pressure side. Hot oil can be cooled, filtered, or used as a source of oil for flushing other pump and motor cases. Hot oil is removed from the loop when the SUN RPEC cartridge is set below the hydrostatic charge pressure relief valve.

NOTE: A mechanical brake is recommended to positively lock any stopped live load.

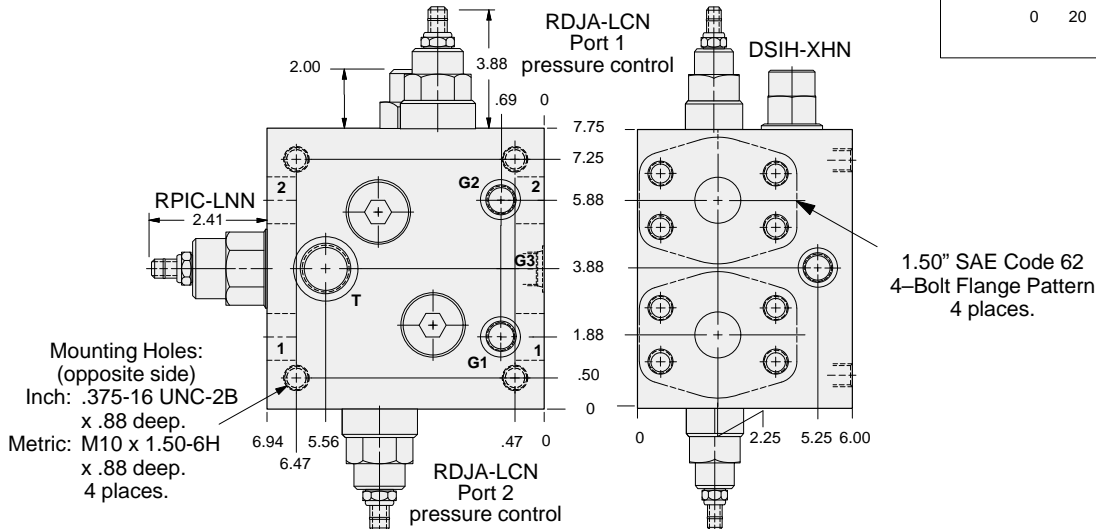


Mounting Hole Dimensions	Ports 1 & 2	Port T	Ports G1, G2, & G3	ALUMINUM		DUCTILE IRON	
				Port Code	List Price*	Port Code	List Price*
Inch	Code 62	SAE-16	SAE-6	6		6/S	
Metric	Code 62	1.00 BSPP	.25 BSPP	6/M		6/T	

*For part number and price for body only contact your local SUN distributor.



13



OPTIONS

XRJB - LCN - A*

CARTRIDGE

RDJA Pg 1.11
For Viton Seals Change LCN to LCV.

Customer Specified Setting
Stamped on Hex

PORTS

See Chart
above



HYDROSTATIC TRANSMISSION ASSEMBLY 2.00" SAE FLANGE PORT BODY



- Aluminum rated to 3000 psi and Ductile Iron rated to 5000 psi.
- Hot oil pressure can be confirmed and/or set with transmission in neutral.

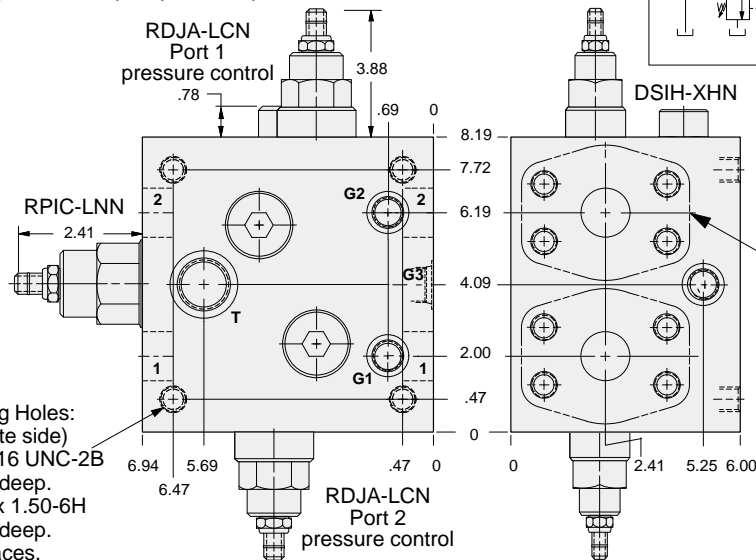
Mounting Hole Dimensions	Ports 1 & 2	Port T	Ports G1, G2, & G3	ALUMINUM		DUCTILE IRON	
				Port Code	List Price*	Port Code	List Price*
Inch	Code 61	SAE-16	SAE-6	S		S/S	
Metric	Code 61	1.00 BSPP	.25 BSPP	S/M		S/T	

*For part number and price for body only contact your local SUN distributor.

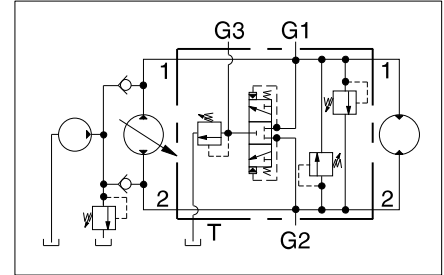
These SUN valve assemblies are for use with hydrostatic transmissions to provide overload relief valve protection for the main circuit in both directions. Additionally, an auxiliary shuttle valve allows bleeding of hot oil from the low pressure side. Hot oil can be cooled, filtered, or used as a source of oil for flushing other pump and motor cases. Hot oil is removed from the loop when the SUN RPEC cartridge is set below the hydrostatic charge pressure relief valve.

NOTE: A mechanical brake is recommended to positively lock any stopped live load.

Mounting Holes:
(opposite side)
Inch: .375-16 UNC-2B
x .88 deep.
Metric: M10 x 1.50-6H
x .88 deep.
4 places.

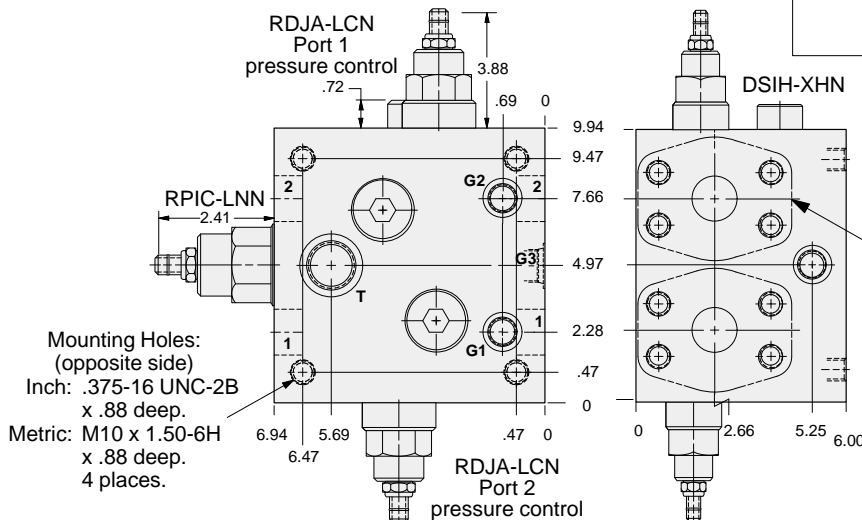
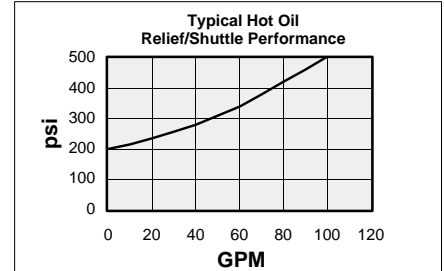


2.00" SAE Code 61
4-Bolt Flange Pattern
4 places.



Mounting Hole Dimensions	Ports 1 & 2	Port T	Ports G1, G2, & G3	ALUMINUM		DUCTILE IRON	
				Port Code	List Price*	Port Code	List Price*
Inch	Code 62	SAE-16	SAE-6	8		8/S	
Metric	Code 62	1.00 BSPP	.25 BSPP	8/M		8/T	

*For part number and price for body only contact your local SUN distributor.



2.00" SAE Code 62
4-Bolt Flange Pattern
4 places.

OPTIONS			XRJB - LCN - A*	
CARTRIDGE	RDJA Pg 1.11 For Viton Seals Change LCN to LCV.	Customer Specified Setting Stamped on Hex	PORTS See Chart above	