



# PUMP CIRCUIT CONTROL ASSEMBLY SUITABLE FOR RESERVIOR MOUNTING FOR USE WITH MULTIPLE PUMP CIRCUITS



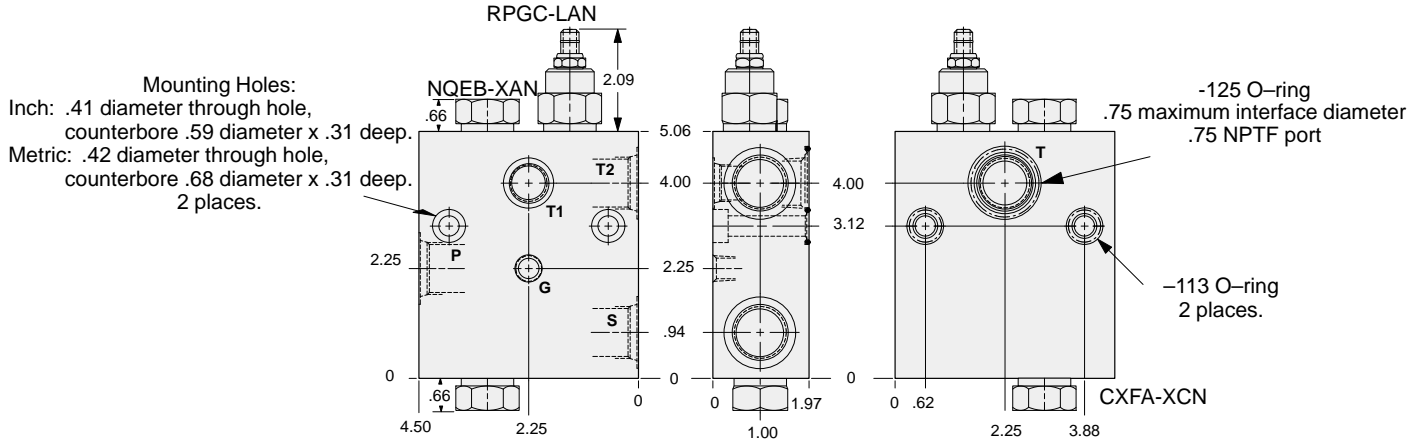
- Aluminum rated to 3000 psi and Ductile Iron rated to 5000 psi.

## YFRC: 25 GPM

Mounting Hole Dimensions	Port P, S, & T2	Port T1	Gage Port	ALUMINUM		DUCTILE IRON	
				Port Code	List Price*	Port Code	List Price*
Inch	.75 NPTF	.50 NPTF	.25 NPTF	D		D/S	
Inch	SAE-12	SAE-8	.25 NPTF	L		L/S	
Metric	.75 BSPP	.50 BSPP	.25 BSPP	W		W/S	

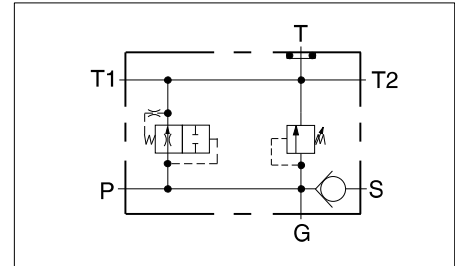
YFRC and YFRE valves are suitable for multiple pump circuits when connected directly to each pump in the system. They provide air-bleed and relief protection for each pump and the check valve position isolates the other pumps from the valve assembly.

\*For part number and price for body only contact your local SUN distributor.

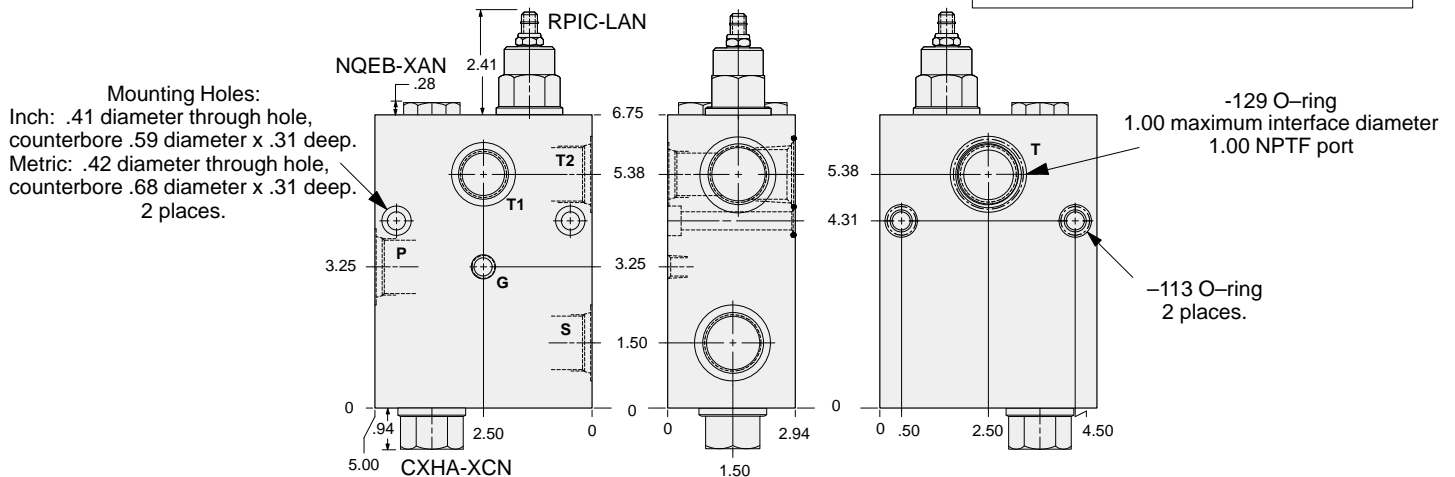


## YFRE: 50 GPM

Mounting Hole Dimensions	Port P, S, & T2	Port T1	Gage Port	ALUMINUM		DUCTILE IRON	
				Port Code	List Price*	Port Code	List Price*
Inch	1.00 NPTF	.75 NPTF	.25 NPTF	E		E/S	
Inch	SAE-16	SAE-12	.25 NPTF	M		M/S	
Metric	1.00 BSPP	.75 BSPP	.25 BSPP	X		X/S	



\*For part number and price for body only contact your local SUN distributor.



## OPTIONS

### YFR\* - LAN - A\*

#### FLOW CAPABILITY

- C** 25 GPM  
RPGC Cartridge
- E** 50 GPM  
RPIC Cartridge

#### PORTS

For Viton Seals Change LAN to LAV.  
For Viton Seals Change LAN to LAV.

See Chart above

Customer Specified Setting  
Stamped on Hex



# PUMP CIRCUIT CONTROL ASSEMBLY SUITABLE FOR RESERVIOR MOUNTING FOR USE WITH SINGLE PUMP CIRCUITS



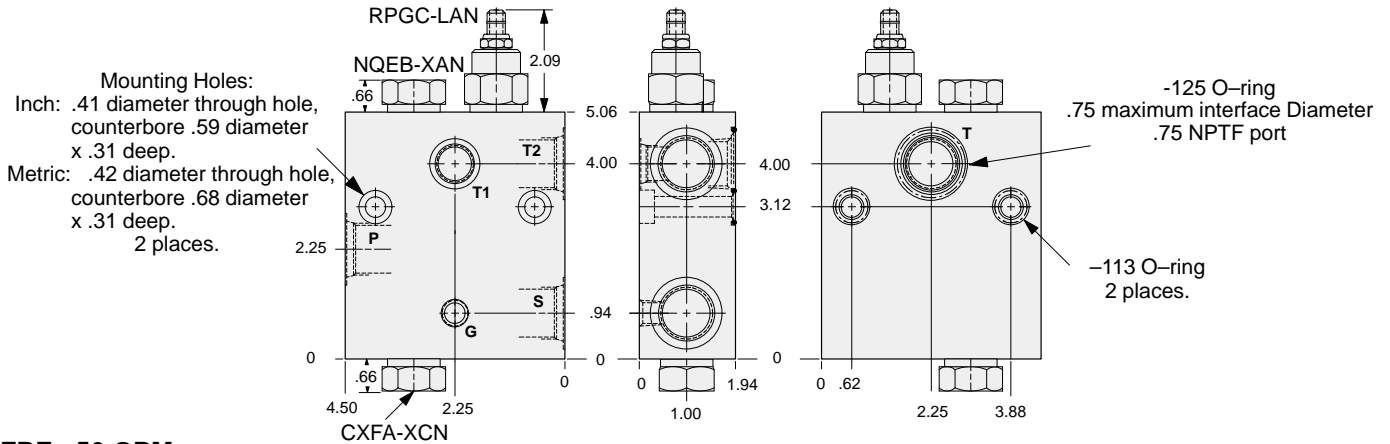
- Aluminum rated to 3000 psi and Ductile Iron rated to 5000 psi.

## YFRD: 25 GPM

Mounting Hole Dimensions	Port P, S, & T2	Port T1	Gage Port	ALUMINUM		DUCTILE IRON	
				Port Code	List Price*	Port Code	List Price*
Inch	.75 NPTF	.50 NPTF	.25 NPTF	D		D/S	
Inch	SAE-12	SAE-8	.25 NPTF	L		L/S	
Metric	.75 BSPP	.50 BSPP	.25 BSPP	W		W/S	

The SUN pump circuit manifold contains an air-bleed and start up valve, main system relief, and a check valve for use with any basic power unit. O-ring seals for one of the tank ports and bolt mounting holes are provided for direct reservoir mounting. All T ports are also threaded.

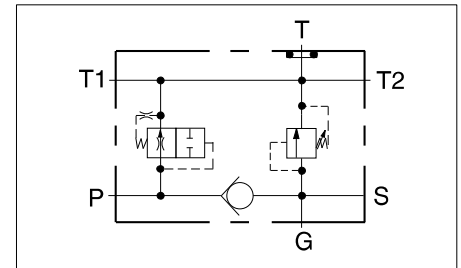
\*For part number and price for body only contact your local SUN distributor.



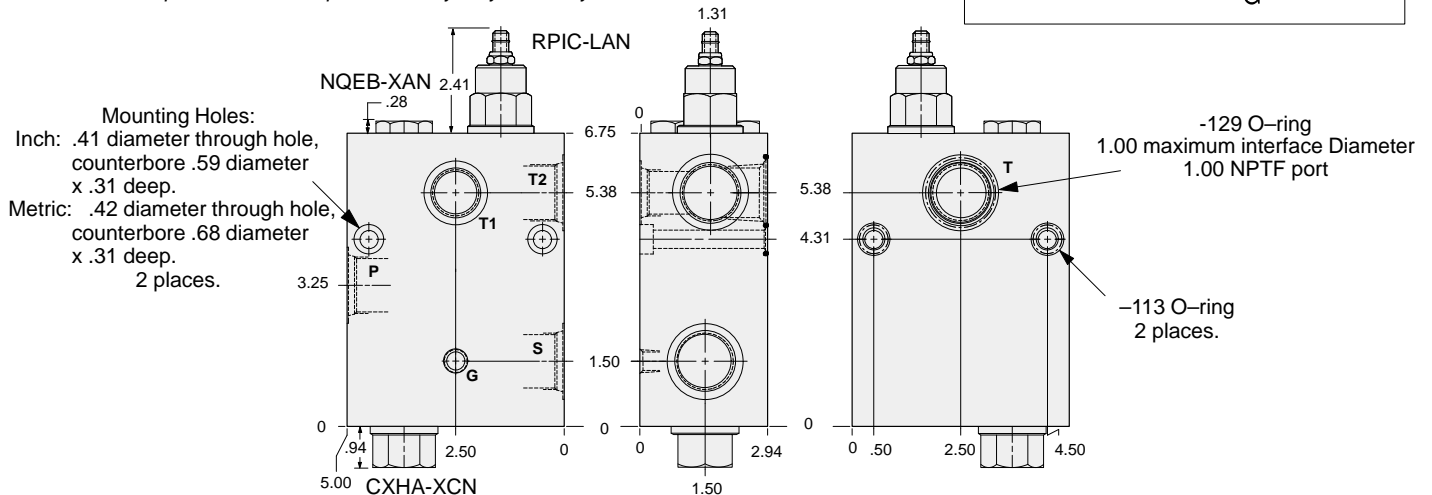
## YFRF: 50 GPM

Mounting Hole Dimensions	Port P, S, & T2	Port T1	Gage Port	ALUMINUM		DUCTILE IRON	
				Port Code	List Price*	Port Code	List Price*
Inch	1.00 NPTF	.75 NPTF	.25 NPTF	E		E/S	
Inch	SAE-16	SAE-12	.25 NPTF	M		M/S	
Metric	1.00 BSPP	.75 BSPP	.25 BSPP	X		X/S	

\*For part number and price for body only contact your local SUN distributor.



13



## OPTIONS

## YFR\* - LAN - A\*

### FLOW CAPABILITY

**D** 25 GPM  
RPGC Cartridge

**F** 50 GPM  
RPIC Cartridge

Customer Specified Setting  
Stamped on Hex

### PORTS

See Chart  
above

For Viton Seals Change  
LAN to LAV.

For Viton Seals Change  
LAN to LAV.