



# PRESSURE-COMPENSATED PRIORITY FLOW CONTROL ASSEMBLY WITH RELIEF ON CONTROLLED FLOW PORT

*Customer Must Specify Flow* ⊗

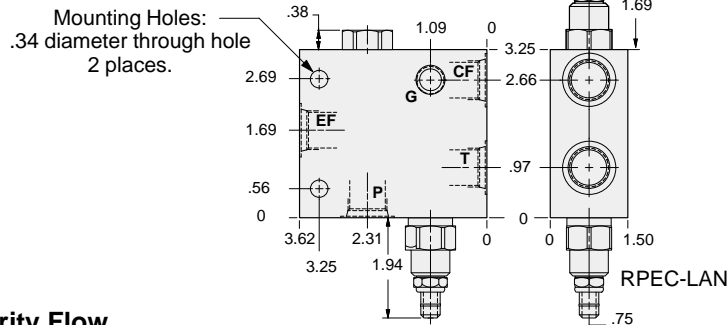
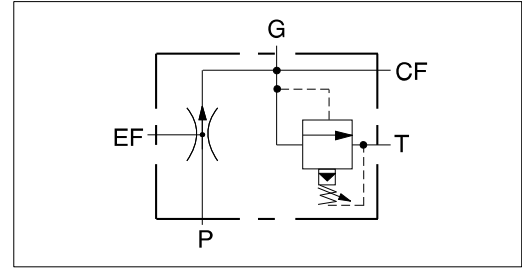


- Aluminum rated to 3000 psi and Ductile Iron rated to 5000 psi.

### YRDR: Up to 6 GPM Priority Flow.

Ports EF & P	Ports CF & T	Gage Port	ALUMINUM		DUCTILE IRON	
			Port Code	List Price*	Port Code	List Price*
.25 NPTF	.25 NPTF	.25 NPTF	A		A/S	
.375 NPTF	.375 NPTF	.25 NPTF	B		B/S	
.50 NPTF	.375 NPTF	.25 NPTF	C		C/S	
SAE-6	SAE-6	.25 NPTF	I		I/S	
SAE-8	SAE-8	.25 NPTF	J		J/S	
SAE-10	SAE-8	.25 NPTF	K		K/S	
.25 BSPP	.25 BSPP	.25 BSPP	T		T/S	
.375 BSPP	.375 BSPP	.25 BSPP	U		U/S	
.50 BSPP	.375 BSPP	.25 BSPP	V		V/S	

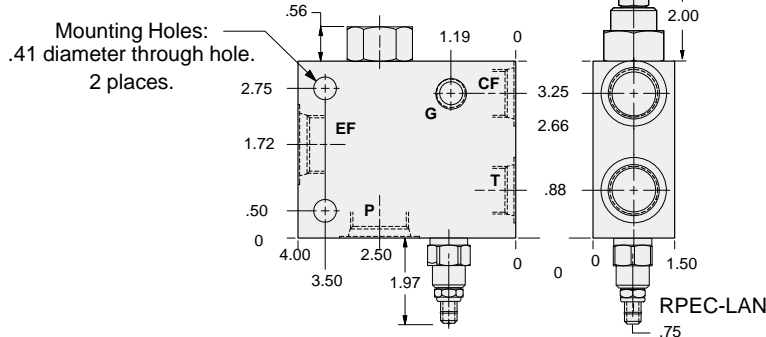
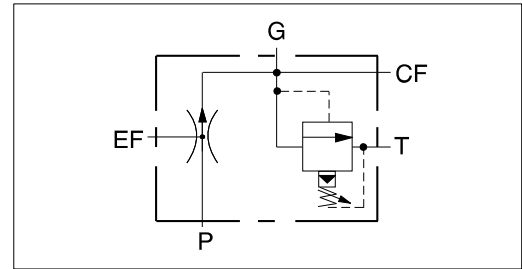
\*For part number and price for body only contact your local SUN distributor.



### YREM: Up to 12 GPM Priority Flow.

Ports EF & P	Ports CF & T	Gage Port	ALUMINUM		DUCTILE IRON	
			Port Code	List Price*	Port Code	List Price*
.50 NPTF	.50 NPTF	.25 NPTF	C		C/S	
.75 NPTF	.50 NPTF	.25 NPTF	D		D/S	
SAE-10	SAE-10	.25 NPTF	K		K/S	
SAE-12	SAE-10	.25 NPTF	L		L/S	
.50 BSPP	.50 BSPP	.25 BSPP	V		V/S	
.75 BSPP	.50 BSPP	.25 BSPP	W		W/S	

\*For part number and price for body only contact your local SUN distributor.



## OPTIONS

## YR\*\* - LAN - \*\*

### FLOW CAPACITY

- DR** Up to 6 GPM For Viton Seals Change LAN to LAV.
- EM** Up to 12 GPM Customer Specified Setting Stamped on Hex

### FLOW ADJUSTMENT

- L** Tuning Adjust
- X** Non-adjustable

### PORTS

See Chart above

⊗ *Customer must specify flow.  
0.1 to 12.0 GPM*



# PRESSURE-COMPENSATED PRIORITY FLOW CONTROL ASSEMBLY WITH RELIEF ON CONTROLLED FLOW PORT

*Customer Must Specify Flow* ⊗

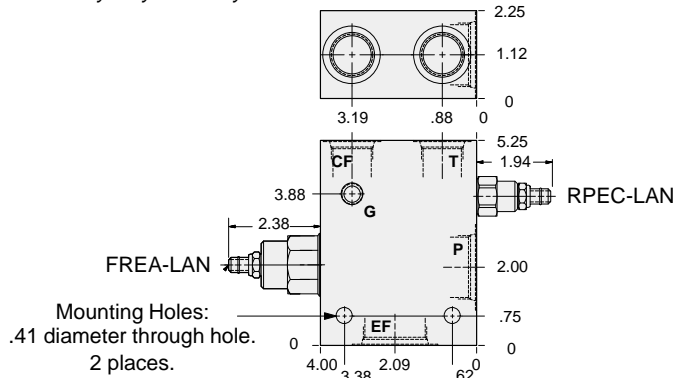
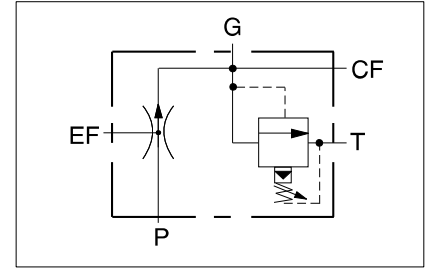


- Aluminum rated to 3000 psi and Ductile Iron rated to 5000 psi.

### YRFF: Up to 25 GPM Priority Flow.

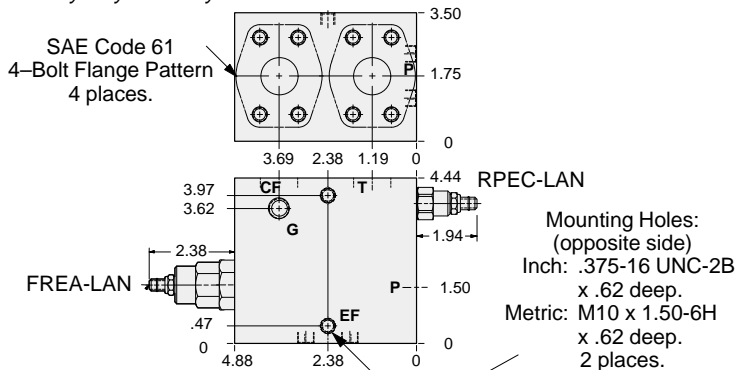
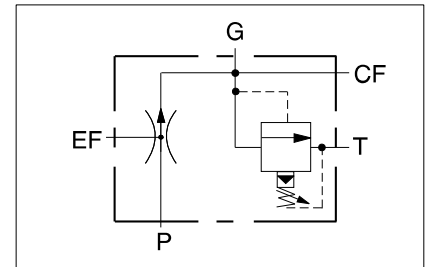
Ports EF & P	Ports CF & T	Gage Port	ALUMINUM		DUCTILE IRON	
			Port Code	List Price*	Port Code	List Price*
.75 NPTF	.75 NPTF	.25 NPTF	<b>D</b>		<b>D/S</b>	
1.00 NPTF	.75 NPTF	.25 NPTF	<b>E</b>		<b>E/S</b>	
1.25 NPTF	.75 NPTF	.25 NPTF	<b>F</b>		<b>F/S</b>	
SAE-12	SAE-12	.25 NPTF	<b>L</b>		<b>L/S</b>	
SAE-16	SAE-12	.25 NPTF	<b>M</b>		<b>M/S</b>	
SAE-20	SAE-12	.25 NPTF	<b>N</b>		<b>N/S</b>	
.75 BSPP	.75 BSPP	.25 BSPP	<b>W</b>		<b>W/S</b>	
1.00 BSPP	.75 BSPP	.25 BSPP	<b>X</b>		<b>X/S</b>	
1.25 BSPP	.75 BSPP	.25 BSPP	<b>Y</b>		<b>Y/S</b>	

\*For part number and price for body only contact your local SUN distributor.



Mounting Hole Dimensions	Ports EF & P Code 61	Ports CF & T Code 61	Gage Port	ALUMINUM		DUCTILE IRON	
				Port Code	List Price*	Port Code	List Price*
Inch	1.00"	1.00"	.25 NPTF	<b>P</b>		<b>P/S</b>	
Metric	1.00"	1.00"	.25 BSPP	<b>P/M</b>		<b>P/T</b>	
Inch	1.25"	1.00"	.25 NPTF	<b>Q</b>		<b>Q/S</b>	
Metric	1.25"	1.00"	.25 BSPP	<b>Q/M</b>		<b>Q/T</b>	

\*For part number and price for body only contact your local SUN distributor.



13

<b>OPTIONS</b>		<b>YRFF - LAN - * *</b>	
<b>FLOW ADJUSTMENT</b>		<b>PORTS</b>	
<b>L</b> Tuning Adjust	For Viton Seals Change LAN to LAV.	See Chart above	
<b>X</b> Non-adjustable	Customer Specified Setting Stamped on Hex		
		⊗ <b>Customer must specify flow. 0.2 to 25 GPM</b>	



# PRESSURE-COMPENSATED PRIORITY FLOW CONTROL ASSEMBLY WITH RELIEF ON CONTROLLED FLOW PORT

*Customer Must Specify Flow* ⊗

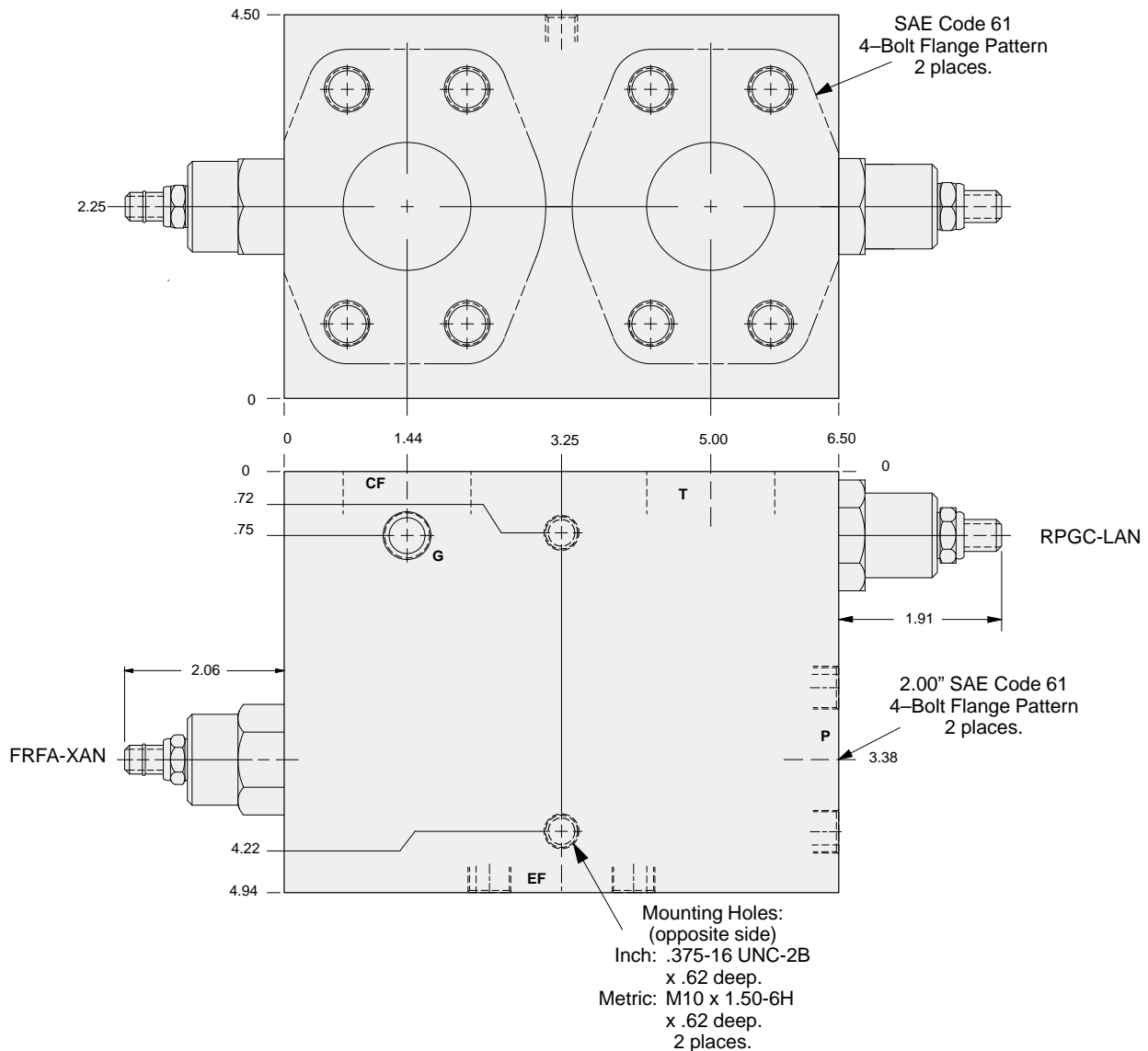
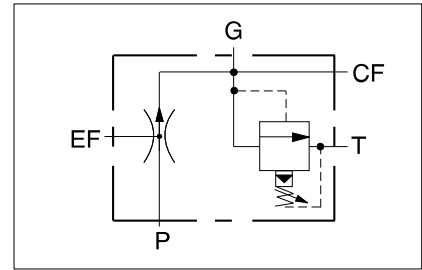


- Aluminum rated to 3000 psi and Ductile Iron rated to 5000 psi.

### YRHF: Up to 50 GPM Priority Flow.

Mounting Hole Dimensions	Ports EF & T Code 61	Ports CF & T Code 61	Gage Port	ALUMINUM		DUCTILE IRON	
				Port Code	List Price*	Port Code	List Price*
Inch	2.00"	1.50"	.25 NPTF	S		S/S	
Metric	2.00"	1.50"	.25 BSPP	S/M		S/T	

\*For part number and price for body only contact your local SUN distributor.



13

OPTIONS	<b>YRHF - LAN - * *</b>	
<b>FLOW ADJUSTMENT</b>		<b>PORTS</b>
<b>L</b> Tuning Adjust <b>X</b> Non-adjustable	For Viton Seals Change LAN to LAV.  Customer Specified Setting Stamped on Hex	See Chart above
		⊗ <i>Customer must specify flow. 0.2 to 50 GPM</i>