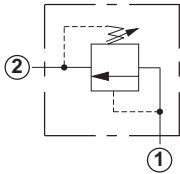
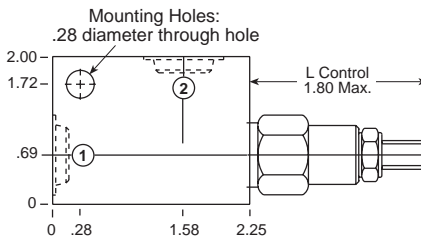
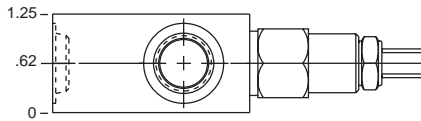


## Line Mounted Assemblies

TWO PORT PRESSURE REGULATING RELIEF APPLICATIONS  
(90 DEGREE BODIES)PILOT OPERATED  
ASSEMBLIESGo to [www.sunhydraulics.com](http://www.sunhydraulics.com)  
for more product information and pricing.DIRECT ACTING  
ASSEMBLIES

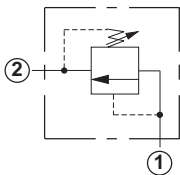
## 0-12 GPM Cavity T-162A



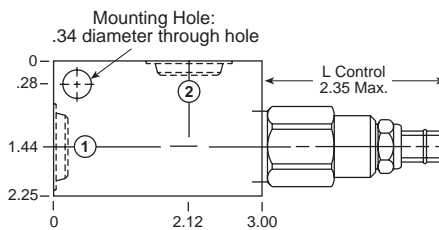
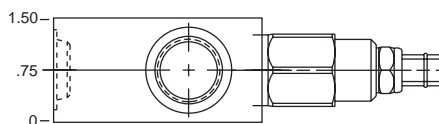
Ports 1 and 2	Assembly Model Code*
1/4" NPTF	<b>RPCC-LAN-AAA</b>
3/8" NPTF	<b>RPCC-LAN-AAB</b>
SAE-4	<b>RPCC-LAN-AAH</b>
SAE-6	<b>RPCC-LAN-AAI</b>

\*Add modifier /S to order Ductile Iron for pressure  
rating over 3000 psi.

Ports 1 and 2	Assembly Model Code*
1/4" NPTF	<b>RDBA-LAN-AAA</b>
3/8" NPTF	<b>RDBA-LAN-AAB</b>
SAE-4	<b>RDBA-LAN-AAH</b>
SAE-6	<b>RDBA-LAN-AAI</b>

\*Add modifier /S to order Ductile Iron for pressure  
rating over 3000 psi.

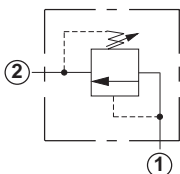
## 0-25 GPM Cavity T-10A



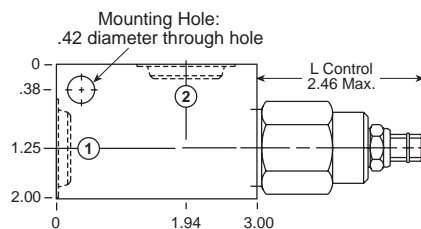
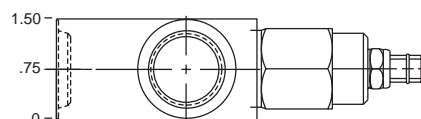
Ports 1 and 2	Assembly Model Code*
1/2" NPTF	<b>RPEC-LAN-FAC</b>
3/4" NPTF	<b>RPEC-LAN-FAD</b>
SAE-10	<b>RPEC-LAN-FAK</b>
SAE-12	<b>RPEC-LAN-FAL</b>

\*Add modifier /S to order Ductile Iron for pressure  
rating over 3000 psi.

Ports 1 and 2	Assembly Model Code*
1/2" NPTF	<b>RDDA-LAN-FAC</b>
3/4" NPTF	<b>RDDA-LAN-FAD</b>
SAE-10	<b>RDDA-LAN-FAK</b>
SAE-12	<b>RDDA-LAN-FAL</b>

\*Add modifier /S to order Ductile Iron for pressure  
rating over 3000 psi.

## 0-50 GPM Cavity T-3A



Ports 1 and 2	Assembly Model Code*
1/2" NPTF	<b>RPGC-LAN-CAC</b>
3/4" NPTF	<b>RPGC-LAN-CAD</b>
SAE-10	<b>RPGC-LAN-CAK</b>
SAE-12	<b>RPGC-LAN-CAL</b>

\*Add modifier /S to order Ductile Iron for pressure  
rating over 3000 psi.

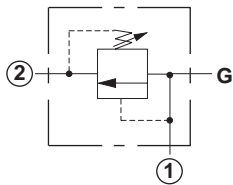
Ports 1 and 2	Assembly Model Code*
1/2" NPTF	<b>RDFA-LAN-CAC</b>
3/4" NPTF	<b>RDFA-LAN-CAD</b>
SAE-10	<b>RDFA-LAN-CAK</b>
SAE-12	<b>RDFA-LAN-CAL</b>

\*Add modifier /S to order Ductile Iron for pressure  
rating over 3000 psi.

NOTES: Page 2 for cartridge models RP\*C-\*\*\* and RD\*A-\*\*\* show performance curves, technical tips, and options.  
See page vii for technical information about line mount bodies including SAE flange pattern specifications.  
Consult your local Sun Distributor or the Sun Web Site for other port sizes available in the bodies shown above.  
Model Codes printed in red are Preferred Products and are readily available.

**TWO PORT PRESSURE REGULATING RELIEF APPLICATIONS  
(90 DEGREE/90 DEGREE 1.50" SAE C62 FLANGE PORT BODIES)**

**PILOT OPERATED ASSEMBLIES**

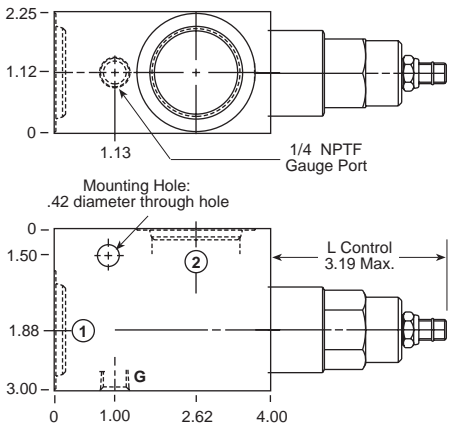


Ports 1 and 2	Assembly Model Code*
3/4" NPTF	<b>RPIC-LAN-IAD</b>
1" NPTF	<b>RPIC-LAN-IAE</b>
1 1/4" NPTF	<b>RPIC-LAN-IAF</b>
SAE-12	<b>RPIC-LAN-IAL</b>
SAE-16	<b>RPIC-LAN-IAM</b>

\*Add modifier /S to order Ductile Iron for pressure rating over 3000 psi.

Go to [www.sunhydraulics.com](http://www.sunhydraulics.com) for more product information and pricing.

**0-100 GPM Cavity T-16A**

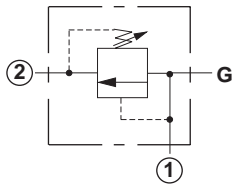


**DIRECT ACTING ASSEMBLIES**

Ports 1 and 2	Assembly Model Code*
3/4" NPTF	<b>RDHA-LAN-IAD</b>
1" NPTF	<b>RDHA-LAN-IAE</b>
1 1/4" NPTF	<b>RDHA-LAN-IAF</b>
SAE-12	<b>RDHA-LAN-IAL</b>
SAE-16	<b>RDHA-LAN-IAM</b>

\*Add modifier /S to order Ductile Iron for pressure rating over 3000 psi.

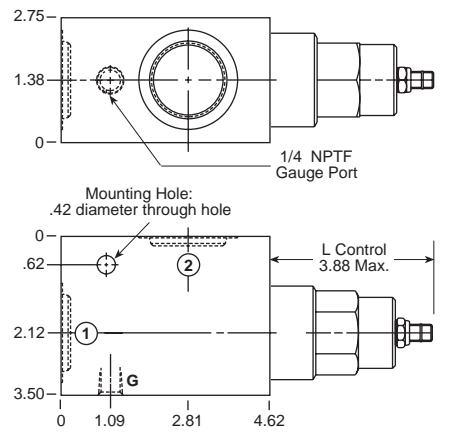
**PILOT OPERATED ASSEMBLIES**



Ports 1 and 2	Assembly Model Code*
3/4" NPTF	<b>RPKC-LAN-LAD</b>
1" NPTF	<b>RPKC-LAN-LAE</b>
1 1/4" NPTF	<b>RPKC-LAN-LAF</b>
SAE-12	<b>RPKC-LAN-LAL</b>
SAE-16	<b>RPKC-LAN-LAM</b>

\*Add modifier /S to order Ductile Iron for pressure rating over 3000 psi.

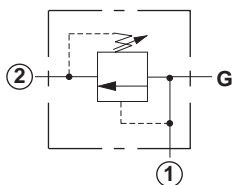
**0-200 GPM Cavity T-18A**



Ports 1 and 2	Assembly Model Code*
3/4" NPTF	<b>RDJA-LAN-LAD</b>
1" NPTF	<b>RDJA-LAN-LAE</b>
1 1/4" NPTF	<b>RDJA-LAN-LAF</b>
SAE-12	<b>RDJA-LAN-LAL</b>
SAE-16	<b>RDJA-LAN-LAM</b>

\*Add modifier /S to order Ductile Iron for pressure rating over 3000 psi.

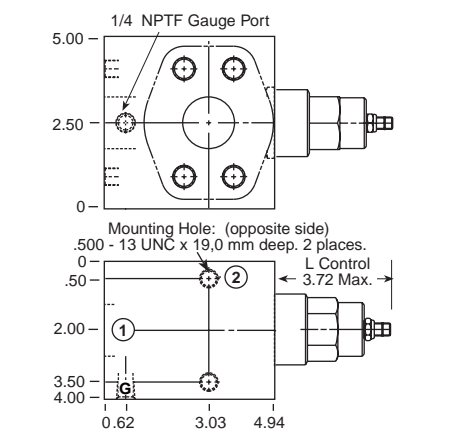
**PILOT OPERATED ASSEMBLIES**



Ports 1 and 2	Assembly Model Code*
1 1/2" SAE C62	<b>RPKC-LAN-LA6</b>

\*Add modifier /S to order Ductile Iron for pressure rating over 3000 psi.

**0-200 GPM Cavity T-18A**

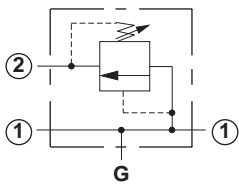


Ports 1 and 2	Assembly Model Code*
1 1/2" SAE C62	<b>RDJA-LAN-LA6</b>

\*Add modifier /S to order Ductile Iron for pressure rating over 3000 psi.

NOTES: Page 2 for cartridge models RP\*C-\*\*\* and RD\*A-\*\*\* show performance curves, technical tips, and options. See page vii for technical information about line mount bodies including SAE flange pattern specifications. Consult your local Sun Distributor or the Sun Web Site for other port sizes available in the bodies shown above. Model Codes printed in red are Preferred Products and are readily available.

## Line Mounted Assemblies

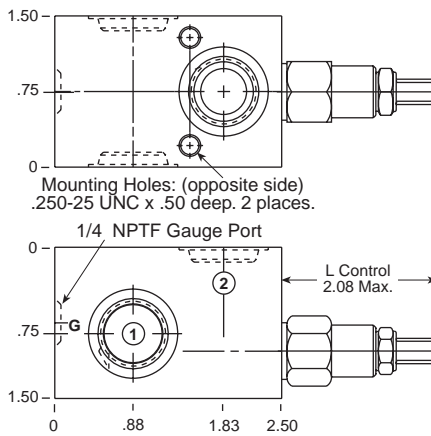
TWO PORT PRESSURE REGULATING RELIEF APPLICATIONS  
(THROUGH PORT BODIES)PILOT OPERATED  
ASSEMBLIES

Ports 1 and 2	Assembly Model Code*
1/4" NPTF	<b>RPCC-LAN-AEA</b>
3/8" NPTF	<b>RPCC-LAN-AEB</b>
SAE-4	<b>RPCC-LAN-AEH</b>
SAE-6	<b>RPCC-LAN-AEI</b>

\*Add modifier /S to order Ductile Iron for pressure rating over 3000 psi.

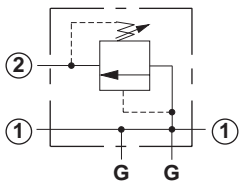
Go to [www.sunhydraulics.com](http://www.sunhydraulics.com)  
for more product information and pricing.

## 0-12 GPM Cavity T-162A

DIRECT ACTING  
ASSEMBLIES

Ports 1 and 2	Assembly Model Code*
1/4" NPTF	<b>RDBA-LAN-AEA</b>
3/8" NPTF	<b>RDBA-LAN-AEB</b>
SAE-4	<b>RDBA-LAN-AEH</b>
SAE-6	<b>RDBA-LAN-AEI</b>

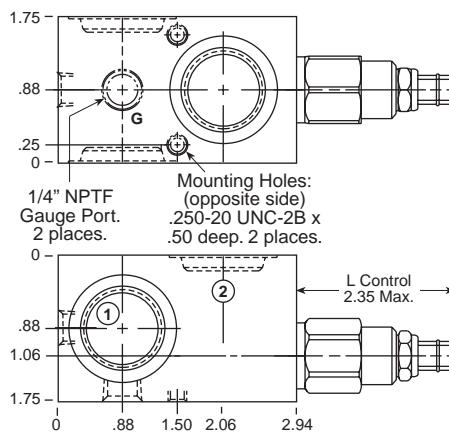
\*Add modifier /S to order Ductile Iron for pressure rating over 3000 psi.



Ports 1 and 2	Assembly Model Code*
3/8" NPTF	<b>RPEC-LAN-FEB</b>
1/2" NPTF	<b>RPEC-LAN-FEC</b>
SAE-6	<b>RPEC-LAN-FEI</b>
SAE-8	<b>RPEC-LAN-FEJ</b>

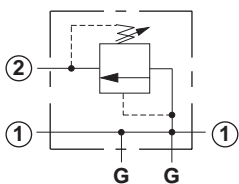
\*Add modifier /S to order Ductile Iron for pressure rating over 3000 psi.

## 0-25 GPM Cavity T-10A



Ports 1 and 2	Assembly Model Code*
3/8" NPTF	<b>RDDA-LAN-FEB</b>
1/2" NPTF	<b>RDDA-LAN-FEC</b>
SAE-6	<b>RDDA-LAN-FEI</b>
SAE-8	<b>RDDA-LAN-FEJ</b>

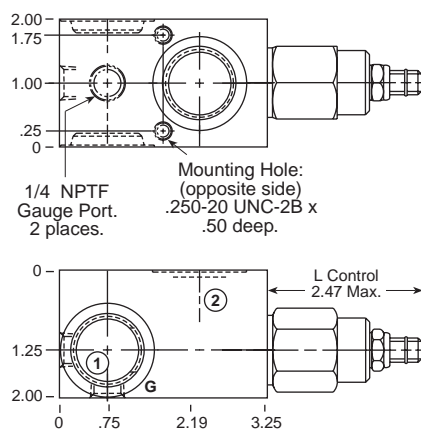
\*Add modifier /S to order Ductile Iron for pressure rating over 3000 psi.



Ports 1 and 2	Assembly Model Code*
SAE-8	<b>RPGC-LAN-CEJ</b>
SAE-12	<b>RPGC-LAN-CEL</b>

\*Add modifier /S to order Ductile Iron for pressure rating over 3000 psi.

## 0-50 GPM Cavity T-3A



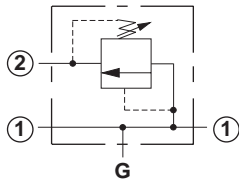
Ports 1 and 2	Assembly Model Code*
SAE-8	<b>RDFA-LAN-CEJ</b>
SAE-12	<b>RDFA-LAN-CEL</b>

\*Add modifier /S to order Ductile Iron for pressure rating over 3000 psi.

NOTES: Page 2 for cartridge models RP\*C-\*\*\* and RD\*A-\*\*\* show performance curves, technical tips, and options.  
See page vii for technical information about line mount bodies including SAE flange pattern specifications.  
Consult your local Sun Distributor or the Sun Web Site for other port sizes available in the bodies shown above.  
Model Codes printed in red are Preferred Products and are readily available.

# TWO PORT PRESSURE REGULATING RELIEF APPLICATIONS (THROUGH PORT BODIES)

## PILOT OPERATED ASSEMBLIES

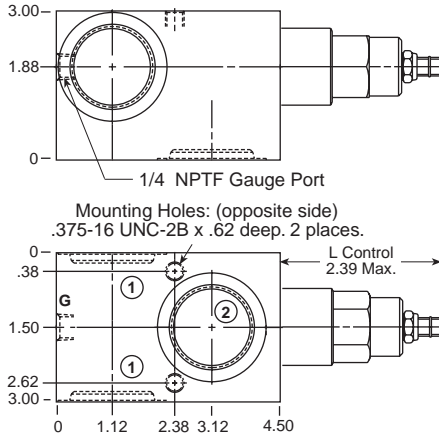


Ports 1 and 2	Assembly Model Code*
1" NPTF	<b>RPIC-LAN-IEE</b>
1 1/4" NPTF	<b>RPIC-LAN-IEF</b>
SAE-12	<b>RPIC-LAN-IEL</b>
SAE-16	<b>RPIC-LAN-IEM</b>

\*Add modifier /S to order Ductile Iron for pressure rating over 3000 psi.

Go to [www.sunhydraulics.com](http://www.sunhydraulics.com) for more product information and pricing.

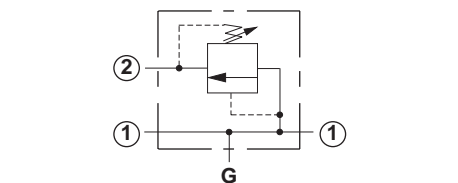
## 0-100 GPM Cavity T-16A



## DIRECT ACTING ASSEMBLIES

Ports 1 and 2	Assembly Model Code*
1" NPTF	<b>RDHA-LAN-IEE</b>
1 1/4" NPTF	<b>RDHA-LAN-IEF</b>
SAE-12	<b>RDHA-LAN-IEL</b>
SAE-16	<b>RDHA-LAN-IEM</b>

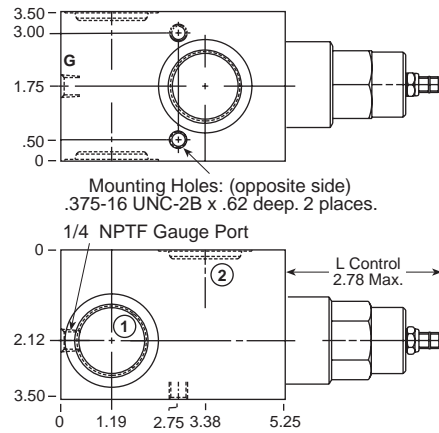
\*Add modifier /S to order Ductile Iron for pressure rating over 3000 psi.



Ports 1 and 2	Assembly Model Code*
1" NPTF	<b>RPKC-LAN-LEE</b>
1 1/4" NPTF	<b>RPKC-LAN-LEF</b>
SAE-12	<b>RPKC-LAN-LEL</b>
SAE-16	<b>RPKC-LAN-LEM</b>

\*Add modifier /S to order Ductile Iron for pressure rating over 3000 psi.

## 0-200 GPM Cavity T-18A



Ports 1 and 2	Assembly Model Code*
1" NPTF	<b>RDJA-LAN-LEE</b>
1 1/4" NPTF	<b>RDJA-LAN-LEF</b>
SAE-12	<b>RDJA-LAN-LEL</b>
SAE-16	<b>RDJA-LAN-LEM</b>

\*Add modifier /S to order Ductile Iron for pressure rating over 3000 psi.

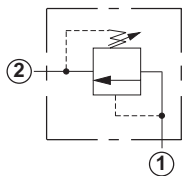
NOTES: Page 2 for cartridge models RP\*C-\*\*\* and RD\*A-\*\*\* show performance curves, technical tips, and options. See page vii for technical information about line mount bodies including SAE flange pattern specifications. Consult your local Sun Distributor or the Sun Web Site for other port sizes available in the bodies shown above. Model Codes printed in red are Preferred Products and are readily available.

## Line Mounted Assemblies

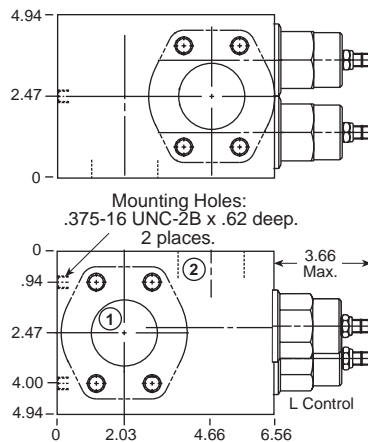
# TWO PORT PRESSURE REGULATING RELIEF APPLICATIONS (2.00" SAE C61/C62 FLANGE PORT BODIES 2 CAVITIES)

**PILOT OPERATED  
ASSEMBLIES**

 Go to [www.sunhydraulics.com](http://www.sunhydraulics.com)  
for more product information and pricing.

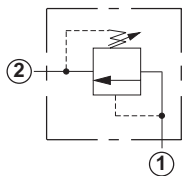
**DIRECT ACTING ASSEMBLIES**


Ports 1 and 2	Assembly Model Code*
2" SAE C61	<b>RPKC-LAN-XZY</b>

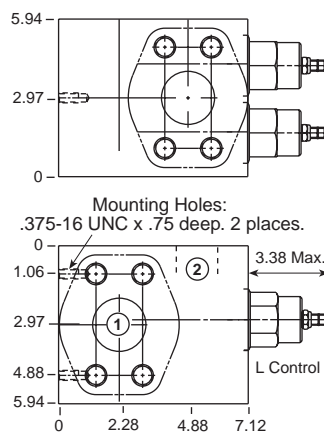
**0-400 GPM Cavity T-18A**


Ports 1 and 2	Assembly Model Code*
2" SAE C61	<b>RDJA-LAN-XZY</b>

\*Add modifier **/S** to order Ductile Iron for pressure rating over 3000 psi.

**0-400 GPM Cavity T-18A**


Ports 1 and 2	Assembly Model Code*
2" SAE C62	<b>RPKC-LAN-VTN</b>



Ports 1 and 2	Assembly Model Code*
2" SAE C62	<b>RDJA-LAN-VTN</b>

\*Add modifier **/S** to order Ductile Iron for pressure rating over 3000 psi.

NOTES: Page 2 for cartridge models RP\*C-\*\*\* and RD\*A-\*\*\* show performance curves, technical tips, and options.  
See page vii for technical information about line mount bodies including SAE flange pattern specifications.  
Consult your local Sun Distributor or the Sun Web Site for other port sizes available in the bodies shown above.

# TWO PORT PRESSURE REGULATING RELIEF APPLICATIONS (CROSS-PORT BODIES, 2 CAVITIES)

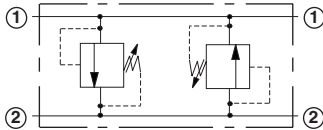
Cross-port relief assemblies are used to protect system components against hydraulic and structural damage which can be caused by the sudden stopping of an inertial load. These assemblies also protect "swing" circuits and other bi-directional installations against possible surges and cavitation.

Sun offers a series of cross-port relief assemblies for line mounting which are shown below, as well as a variety of single and dual models in sandwich bodies to simplify circuitry when using ISO 02, ISO 05, ISO 07 and ISO 08 solenoid valves.

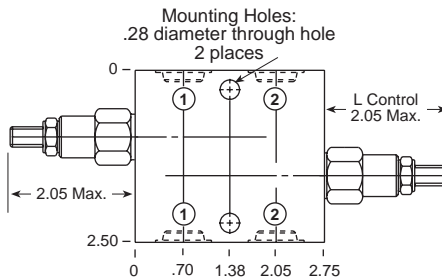
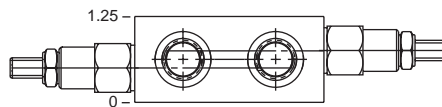
## PILOT OPERATED ASSEMBLIES

Go to [www.sunhydraulics.com](http://www.sunhydraulics.com) for more product information and pricing.

## DIRECT ACTING ASSEMBLIES



### 0-12 GPM Cavity T-162A

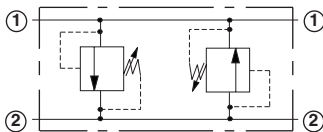


Ports 1 and 2	Assembly Model Code*
1/4" NPTF	<b>RPCC-LAN-AYA</b>
3/8" NPTF	<b>RPCC-LAN-AYB</b>
SAE-4	<b>RPCC-LAN-AYH</b>
<b>SAE-6</b>	<b>RPCC-LAN-AYI</b>

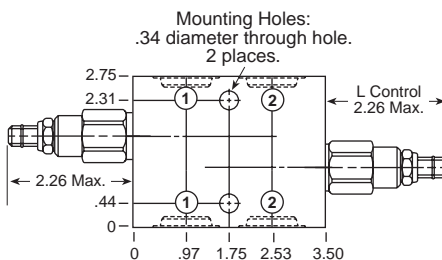
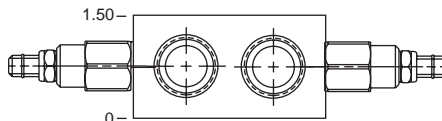
Ports 1 and 2	Assembly Model Code*
1/4" NPTF	<b>RDBA-LAN-AYA</b>
3/8" NPTF	<b>RDBA-LAN-AYB</b>
SAE-4	<b>RDBA-LAN-AYH</b>
<b>SAE-6</b>	<b>RDBA-LAN-AYI</b>

\*Add modifier /S to order Ductile Iron for pressure rating over 3000 psi.

\*Add modifier /S to order Ductile Iron for pressure rating over 3000 psi.



### 0-25 GPM Cavity T-10A

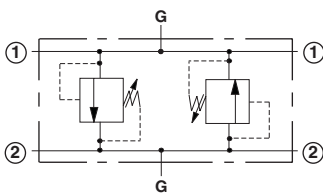


Ports 1 and 2	Assembly Model Code*
3/8" NPTF	<b>RPEC-LAN-YFB</b>
1/2" NPTF	<b>RPEC-LAN-YFC</b>
SAE-6	<b>RPEC-LAN-YFI</b>
<b>SAE-8</b>	<b>RPEC-LAN-YFJ</b>

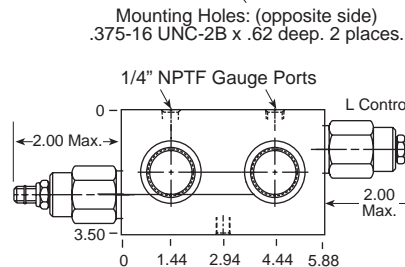
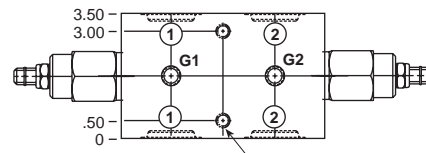
Ports 1 and 2	Assembly Model Code*
3/8" NPTF	<b>RDDA-LAN-YFB</b>
1/2" NPTF	<b>RDDA-LAN-YFC</b>
SAE-6	<b>RDDA-LAN-YFI</b>
<b>SAE-8</b>	<b>RDDA-LAN-YFJ</b>

\*Add modifier /S to order Ductile Iron for pressure rating over 3000 psi.

\*Add modifier /S to order Ductile Iron for pressure rating over 3000 psi.



### 0-50 GPM Cavity T-3A



Ports 1 and 2	Assembly Model Code*
3/4" NPTF	<b>RPGC-LAN-YCD</b>
1" NPTF	<b>RPGC-LAN-YCE</b>
SAE-12	<b>RPGC-LAN-YCL</b>
<b>SAE-16</b>	<b>RPGC-LAN-YCM</b>

Ports 1 and 2	Assembly Model Code*
3/4" NPTF	<b>RDFA-LAN-YCD</b>
1" NPTF	<b>RDFA-LAN-YCE</b>
SAE-12	<b>RDFA-LAN-YCL</b>
<b>SAE-16</b>	<b>RDFA-LAN-YCM</b>

\*Add modifier /S to order Ductile Iron for pressure rating over 3000 psi.

\*Add modifier /S to order Ductile Iron for pressure rating over 3000 psi.

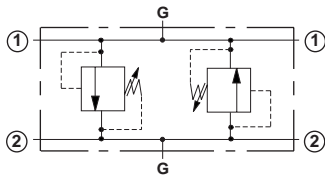
NOTES: Page 2 for cartridge models RP\*C-\*\*\* and RD\*A-\*\*\* show performance curves, technical tips, and options. See page vii for technical information about line mount bodies including SAE flange pattern specifications. Consult your local Sun Distributor or the Sun Web Site for other port sizes available in the bodies shown above. Model Codes printed in red are Preferred Products and are readily available.

## Line Mounted Assemblies

# TWO PORT PRESSURE REGULATING RELIEF APPLICATIONS (CROSS-PORT/CROSS-PORT, 1.50" SAE C61/C62 FLANGE PORT BODIES, 2 CAVITIES)

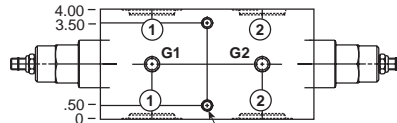
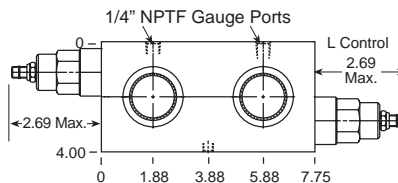
**PILOT OPERATED  
ASSEMBLIES**

 Go to [www.sunhydraulics.com](http://www.sunhydraulics.com)  
for more product information and pricing.

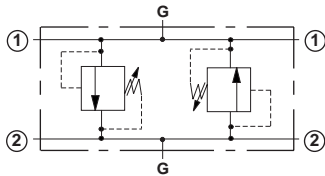
**DIRECT ACTING  
ASSEMBLIES**


Ports 1 and 2	Assembly Model Code*
1 1/4" NPTF	<b>RPIC-LAN-YIF</b>
SAE-20	<b>RPIC-LAN-YIN</b>

 \*Add modifier **/S** to order Ductile Iron for pressure rating over 3000 psi.

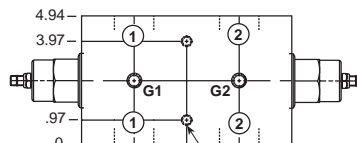
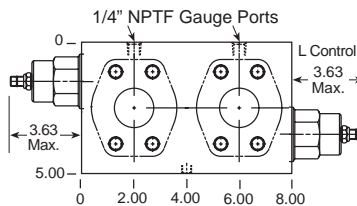
**0-100 GPM Cavity T-16A**

 Mounting Holes: (opposite side)  
.375-16 UNC-2B x .62 deep.  
2 places.


Ports 1 and 2	Assembly Model Code*
1 1/4" NPTF	<b>RDHA-LAN-YIF</b>
SAE-20	<b>RDHA-LAN-YIN</b>

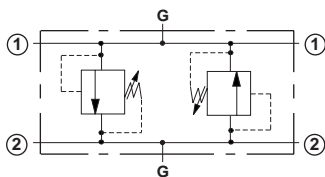
 \*Add modifier **/S** to order Ductile Iron for pressure rating over 3000 psi.


Ports 1 and 2	Assembly Model Code*
1 1/2" SAE C61	<b>RPKC-LAN-YLR</b>

 \*Add modifier **/S** to order Ductile Iron for pressure rating over 3000 psi.

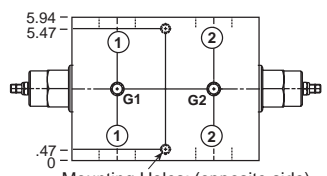
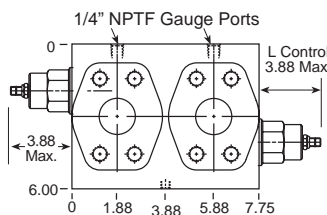
**0-200 GPM Cavity T-18A**

 Mounting Holes: (opposite side)  
.375-16 UNC-2B x .62 deep. 2 places.


Ports 1 and 2	Assembly Model Code*
1 1/2" SAE C61	<b>RDJA-LAN-YLR</b>

 \*Add modifier **/S** to order Ductile Iron for pressure rating over 3000 psi.


Ports 1 and 2	Assembly Model Code*
1 1/2" SAE C62	<b>RPKC-LAN-YL6</b>

 \*Add modifier **/S** to order Ductile Iron for pressure rating over 3000 psi.

**0-200 GPM Cavity T-18A**

 Mounting Holes: (opposite side)  
.375-16 UNC-2B x .62 deep. 2 places.


Ports 1 and 2	Assembly Model Code*
1 1/2" SAE C62	<b>RDJA-LAN-YL6</b>

 \*Add modifier **/S** to order Ductile Iron for pressure rating over 3000 psi.

NOTES: Page 2 for cartridge models RP\*C-\*\*\* and RD\*A-\*\*\* show performance curves, technical tips, and options.  
See page vii for technical information about line mount bodies including SAE flange pattern specifications.  
Consult your local Sun Distributor or the Sun Web Site for other port sizes available in the bodies shown above.