

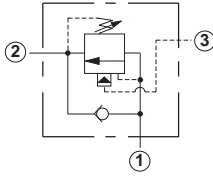
Line Mounted Assemblies

THREE PORT LOAD CONTROL APPLICATIONS (90 DEGREE BODIES)

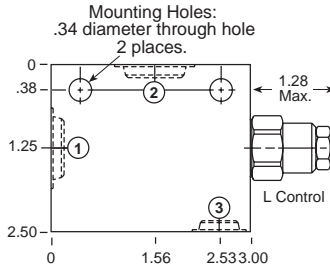
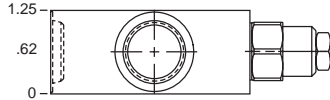
PILOT RATIO
3:1, 1.5:1, 2:1

Go to www.sunhydraulics.com
for more product information and pricing.

PILOT RATIO
2.3:1, 4.5:1, 10:1



0-15 GPM Cavity T-11A

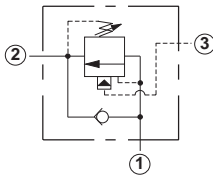


Ports 1 and 2	Port 3	Assembly Model Code*
3/8" NPTF	1/4" NPTF	CBC*-LHN-ECB
1/2" NPTF	1/4" NPTF	CBC*-LHN-ECC
SAE-4	SAE-4	CBC*-LHN-ECH
SAE-6	SAE-6	CBC*-LHN-ECI
SAE-8	SAE-6	CBC*-LHN-ECJ

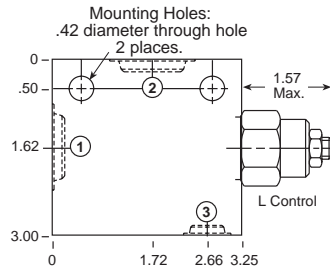
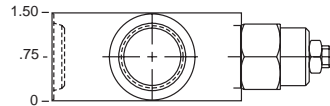
The asterisk () shown in the fourth digit of the model code indicates the counterbalance pilot ratio of the cartridge and must be specified by customer. See page 50. Add modifier /S to order Ductile Iron for pressure rating over 3000 psi.

Ports 1 and 2	Port 3	Assembly Model Code*
3/8" NPTF	1/4" NPTF	CBC*-LJN-ECB
1/2" NPTF	1/4" NPTF	CBC*-LJN-ECC
SAE-4	SAE-4	CBC*-LJN-ECH
SAE-6	SAE-6	CBC*-LJN-ECI
SAE-8	SAE-6	CBC*-LJN-ECJ

The asterisk () shown in the fourth digit of the model code indicates the counterbalance pilot ratio of the cartridge and must be specified by customer. See page 50. Add modifier /S to order Ductile Iron for pressure rating over 3000 psi.



0-30 GPM Cavity T-2A



Ports 1 and 2	Port 3	Assembly Model Code*
1/2" NPTF	1/4" NPTF	CBE*-LHN-BCC
3/4" NPTF	1/4" NPTF	CBE*-LHN-BCD
SAE-10	SAE-6	CBE*-LHN-BCK
SAE-12	SAE-6	CBE*-LHN-BCL

The asterisk () shown in the fourth digit of the model code indicates the counterbalance pilot ratio of the cartridge and must be specified by customer. See page 50. Add modifier /S to order Ductile Iron for pressure rating over 3000 psi.

Ports 1 and 2	Port 3	Assembly Model Code*
1/2" NPTF	1/4" NPTF	CBE*-LJN-BCC
3/4" NPTF	1/4" NPTF	CBE*-LJN-BCD
SAE-10	SAE-6	CBE*-LJN-BCK
SAE-12	SAE-6	CBE*-LJN-BCL

The asterisk () shown in the fourth digit of the model code indicates the counterbalance pilot ratio of the cartridge and must be specified by customer. See page 50. Add modifier /S to order Ductile Iron for pressure rating over 3000 psi.

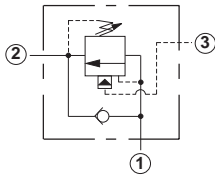
NOTES: Page 50 for cartridge models CB**-* shows performance curves, technical tips, and options.
See page vii for technical information about line mount bodies including SAE flange pattern specifications.
Consult your local Sun Distributor or the Sun Web Site for other port sizes available in the bodies shown above.
Model Codes printed in red are Preferred Products and are readily available.

THREE PORT LOAD CONTROL APPLICATIONS (90 DEGREE BODIES)

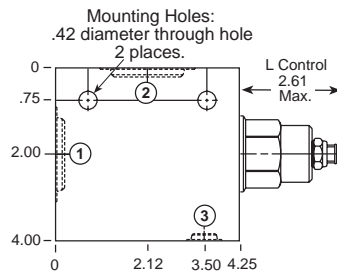
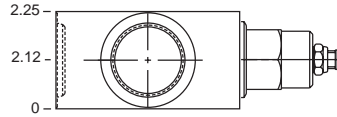
**PILOT RATIO
3:1, 1.5:1, 2:1**

Go to www.sunhydraulics.com
for more product information and pricing.

**PILOT RATIO
2.3:1, 4.5:1, 10:1**



0-60 GPM Cavity T-17A



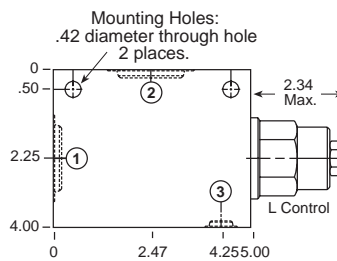
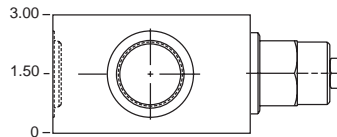
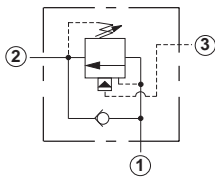
Ports 1 and 2	Port 3	Assembly Model Code*
1" NPTF	1/4" NPTF	CBG*-LHN-HCE
1 1/4" NPTF	1/4" NPTF	CBG*-LHN-HCF
SAE-12	SAE-6	CBG*-LHN-HCL
SAE-16	SAE-6	CBG*-LHN-HCM

Ports 1 and 2	Port 3	Assembly Model Code*
1" NPTF	1/4" NPTF	CBG*-LJN-HCE
1 1/4" NPTF	1/4" NPTF	CBG*-LJN-HCF
SAE-12	SAE-6	CBG*-LJN-HCL
SAE-16	SAE-6	CBG*-LJN-HCM

The asterisk () shown in the fourth digit of the model code indicates the counterbalance pilot ratio of the cartridge and must be specified by customer. See page 50. Add modifier /S to order Ductile Iron for pressure rating over 3000 psi.

The asterisk () shown in the fourth digit of the model code indicates the counterbalance pilot ratio of the cartridge and must be specified by customer. See page 50. Add modifier /S to order Ductile Iron for pressure rating over 3000 psi.

0-120 GPM Cavity T-19A



Ports 1 and 2	Port 3	Assembly Model Code*
1" NPTF	1/4" NPTF	CBI*-LHN-KCE
1 1/4" NPTF	1/4" NPTF	CBI*-LHN-KCF
SAE-16	SAE-6	CBI*-LHN-KCM
SAE-20	SAE-6	CBI*-LHN-KCN

Ports 1 and 2	Port 3	Assembly Model Code*
1" NPTF	1/4" NPTF	CBI*-LJN-KCE
1 1/4" NPTF	1/4" NPTF	CBI*-LJN-KCF
SAE-16	SAE-6	CBI*-LJN-KCM
SAE-20	SAE-6	CBI*-LJN-KCN

The asterisk () shown in the fourth digit of the model code indicates the counterbalance pilot ratio of the cartridge and must be specified by customer. See page 50. Add modifier /S to order Ductile Iron for pressure rating over 3000 psi.

The asterisk () shown in the fourth digit of the model code indicates the counterbalance pilot ratio of the cartridge and must be specified by customer. See page 50. Add modifier /S to order Ductile Iron for pressure rating over 3000 psi.

NOTES: Page 50 for cartridge models CB**-* shows performance curves, technical tips, and options.
See page vii for technical information about line mount bodies including SAE flange pattern specifications.
Consult your local Sun Distributor or the Sun Web Site for other port sizes available in the bodies shown above.
Model Codes printed in red are Preferred Products and are readily available.

Line Mounted Assemblies

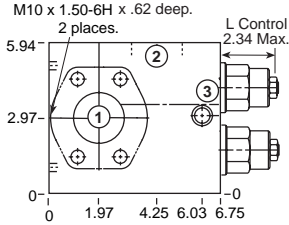
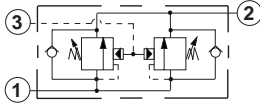
**THREE PORT LOAD CONTROL APPLICATIONS
(90 DEGREE 2.00" C61/C62 FLANGE PORT BODIES, 2 CAVITIES)**

**PILOT RATIO
3:1, 1.5:1, 2:1**

Go to www.sunhydraulics.com
for more product information and pricing.

**PILOT RATIO
2.3:1, 4.5:1, 10:1**

0-240 GPM Cavity T-11A



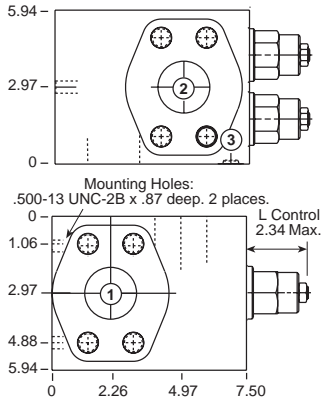
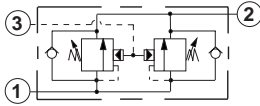
Ports 1 and 2	Port 3	Assembly Model Code*
2" SAE C61	SAE-6	CBI*-LHN-XZZ

Ports 1 and 2	Port 3	Assembly Model Code*
2" SAE C61	SAE-6	CBI*-LHN-XZZ

The asterisk () shown in the fourth digit of the model code indicates the counterbalance pilot ratio of the cartridge and must be specified by customer. See page 50. Add modifier /S to order Ductile Iron for pressure rating over 3000 psi.

The asterisk () shown in the fourth digit of the model code indicates the counterbalance pilot ratio of the cartridge and must be specified by customer. See page 50. Add modifier /S to order Ductile Iron for pressure rating over 3000 psi.

0-240 GPM Cavity T-19A



Ports 1 and 2	Port 3	Assembly Model Code*
2" SAE C62	SAE-6	CBI*-LJN-Z8Z

Ports 1 and 2	Port 3	Assembly Model Code*
2" SAE C62	SAE-6	CBI*-LJN-Z8Z

The asterisk () shown in the fourth digit of the model code indicates the counterbalance pilot ratio of the cartridge and must be specified by customer. See page 50. Add modifier /S to order Ductile Iron for pressure rating over 3000 psi.

The asterisk () shown in the fourth digit of the model code indicates the counterbalance pilot ratio of the cartridge and must be specified by customer. See page 50. Add modifier /S to order Ductile Iron for pressure rating over 3000 psi.

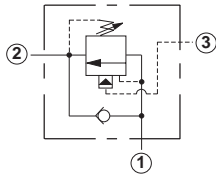
NOTES: Page 50 for cartridge models CB**-* shows performance curves, technical tips, and options.
See page vii for technical information about line mount bodies including SAE flange pattern specifications.
Consult your local Sun Distributor or the Sun Web Site for other port sizes available in the bodies shown above.

THREE PORT LOAD CONTROL APPLICATIONS (INLINE BODIES)

PILOT RATIO
3:1, 1.5:1, 2:1

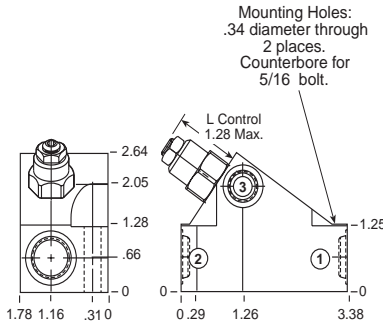
Go to www.sunhydraulics.com
for more product information and pricing.

PILOT RATIO
2.3:1, 4.5:1, 10:1



0-15 GPM Cavity T-11A

Ports 1 and 2	Port 3	Assembly Model Code*
3/8" NPTF	1/4" NPTF	CBC*-LHN-EJB
SAE-6	SAE-6	CBC*-LHN-EJI
SAE-8	SAE-6	CBC*-LHN-EJJ

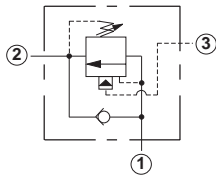


Ports 1 and 2	Port 3	Assembly Model Code*
3/8" NPTF	1/4" NPTF	CBC*-LJN-EJB
SAE-6	SAE-6	CBC*-LJN-EJI
SAE-8	SAE-6	CBC*-LJN-EJJ

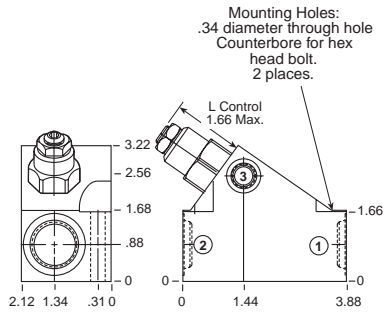
The asterisk () shown in the fourth digit of the model code indicates the counterbalance pilot ratio of the cartridge and must be specified by customer. See page 50. Add modifier /S to order Ductile Iron for pressure rating over 3000 psi.

The asterisk () shown in the fourth digit of the model code indicates the counterbalance pilot ratio of the cartridge and must be specified by customer. See page 50. Add modifier /S to order Ductile Iron for pressure rating over 3000 psi.

0-30 GPM Cavity T-2A



Ports 1 and 2	Port 3	Assembly Model Code*
1/2" NPTF	1/4" NPTF	CBE*-LHN-BVC
3/4" NPTF	1/4" NPTF	CBE*-LHN-BVD
SAE-6	SAE-6	CBE*-LHN-BVI
SAE-8	SAE-6	CBE*-LHN-BVJ

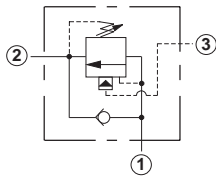


Ports 1 and 2	Port 3	Assembly Model Code*
1/2" NPTF	1/4" NPTF	CBE*-LJN-BVC
3/4" NPTF	1/4" NPTF	CBE*-LJN-BVD
SAE-6	SAE-6	CBE*-LJN-BVI
SAE-8	SAE-6	CBE*-LJN-BVJ

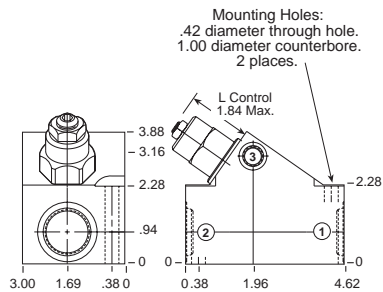
The asterisk () shown in the fourth digit of the model code indicates the counterbalance pilot ratio of the cartridge and must be specified by customer. See page 50. Add modifier /S to order Ductile Iron for pressure rating over 3000 psi.

The asterisk () shown in the fourth digit of the model code indicates the counterbalance pilot ratio of the cartridge and must be specified by customer. See page 50. Add modifier /S to order Ductile Iron for pressure rating over 3000 psi.

0-60 GPM Cavity T-17A



Ports 1 and 2	Port 3	Assembly Model Code*
3/4" NPTF	1/4" NPTF	CBG*-LHN-HDD
1" NPTF	1/4" NPTF	CBG*-LHN-HDE
SAE-12	SAE-6	CBG*-LHN-HDL
SAE-16	SAE-6	CBG*-LHN-HDM



Ports 1 and 2	Port 3	Assembly Model Code*
3/4" NPTF	1/4" NPTF	CBG*-LJN-HDD
1" NPTF	1/4" NPTF	CBG*-LJN-HDE
SAE-12	SAE-6	CBG*-LJN-HDL
SAE-16	SAE-6	CBG*-LJN-HDM

The asterisk () shown in the fourth digit of the model code indicates the counterbalance pilot ratio of the cartridge and must be specified by customer. See page 50. Add modifier /S to order Ductile Iron for pressure rating over 3000 psi.

The asterisk () shown in the fourth digit of the model code indicates the counterbalance pilot ratio of the cartridge and must be specified by customer. See page 50. Add modifier /S to order Ductile Iron for pressure rating over 3000 psi.

NOTES: Page 50 for cartridge models CB*-*** shows performance curves, technical tips, and options.
See page vii for technical information about line mount bodies including SAE flange pattern specifications.
Consult your local Sun Distributor or the Sun Web Site for other port sizes available in the bodies shown above.
Model Codes printed in red are Preferred Products and are readily available.

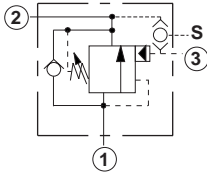
Line Mounted Assemblies

THREE PORT LOAD CONTROL APPLICATIONS (90 DEGREE BODIES WITH SHUTTLE)

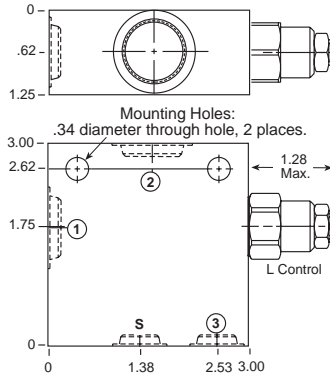
PILOT RATIO
3:1, 1.5:1, 2:1

Go to www.sunhydraulics.com
for more product information and pricing.

PILOT RATIO
2.3:1, 4.5:1, 10:1



0-15 GPM Cavity T-11A

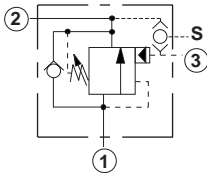


Ports 1 and 2	Ports Shuttle and 3	Assembly Model Code*
3/8" NPTF	1/4" NPTF	CBC*-LHN-EGB
1/2" NPTF	1/4" NPTF	CBC*-LHN-EGC
SAE-6	SAE-6	CBC*-LHN-EGI
SAE-8	SAE-6	CBC*-LHN-EGJ
SAE-10	SAE-6	CBC*-LHN-EGK

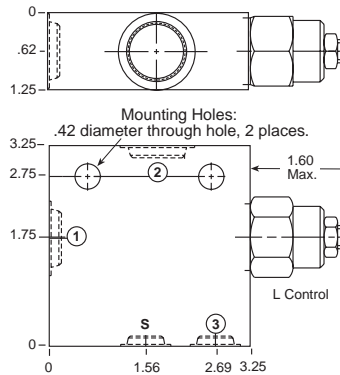
The asterisk () shown in the fourth digit of the model code indicates the counterbalance pilot ratio of the cartridge and must be specified by customer. See page 50. Add modifier /S to order Ductile Iron for pressure rating over 3000 psi.

Ports 1 and 2	Ports Shuttle and 3	Assembly Model Code*
3/8" NPTF	1/4" NPTF	CBC*-LJN-EGB
1/2" NPTF	1/4" NPTF	CBC*-LJN-EGC
SAE-6	SAE-6	CBC*-LJN-EGI
SAE-8	SAE-6	CBC*-LJN-EGJ
SAE-10	SAE-6	CBC*-LJN-EGK

The asterisk () shown in the fourth digit of the model code indicates the counterbalance pilot ratio of the cartridge and must be specified by customer. See page 50. Add modifier /S to order Ductile Iron for pressure rating over 3000 psi.



0-30 GPM Cavity T-2A

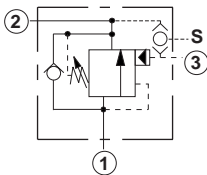


Ports 1 and 2	Ports Shuttle and 3	Assembly Model Code*
1/2" NPTF	1/4" NPTF	CBE*-LHN-BGC
3/4" NPTF	1/4" NPTF	CBE*-LHN-BGD
SAE-6	SAE-6	CBE*-LHN-BGI
SAE-8	SAE-6	CBE*-LHN-BGJ

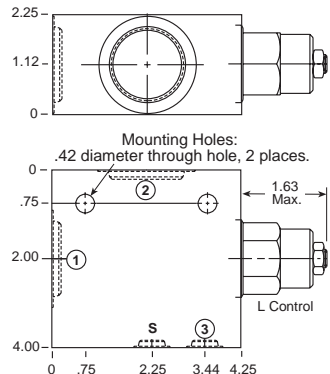
The asterisk () shown in the fourth digit of the model code indicates the counterbalance pilot ratio of the cartridge and must be specified by customer. See page 50. Add modifier /S to order Ductile Iron for pressure rating over 3000 psi.

Ports 1 and 2	Ports Shuttle and 3	Assembly Model Code*
1/2" NPTF	1/4" NPTF	CBE*-LJN-BGC
3/4" NPTF	1/4" NPTF	CBE*-LJN-BGD
SAE-6	SAE-6	CBE*-LJN-BGI
SAE-8	SAE-6	CBE*-LJN-BGJ

The asterisk () shown in the fourth digit of the model code indicates the counterbalance pilot ratio of the cartridge and must be specified by customer. See page 50. Add modifier /S to order Ductile Iron for pressure rating over 3000 psi.



0-60 GPM Cavity T-17A



Ports 1 and 2	Ports Shuttle and 3	Assembly Model Code*
1" NPTF	1/4" NPTF	CBG*-LHN-HDE
1 1/4" NPTF	1/4" NPTF	CBG*-LHN-HDF
SAE-12	SAE-6	CBG*-LHN-HDL
SAE-16	SAE-6	CBG*-LHN-HDM

The asterisk () shown in the fourth digit of the model code indicates the counterbalance pilot ratio of the cartridge and must be specified by customer. See page 50. Add modifier /S to order Ductile Iron for pressure rating over 3000 psi.

Ports 1 and 2	Ports Shuttle and 3	Assembly Model Code*
1" NPTF	1/4" NPTF	CBG*-LJN-HDE
1 1/4" NPTF	1/4" NPTF	CBG*-LJN-HDF
SAE-12	SAE-6	CBG*-LJN-HDL
SAE-16	SAE-6	CBG*-LJN-HDM

The asterisk () shown in the fourth digit of the model code indicates the counterbalance pilot ratio of the cartridge and must be specified by customer. See page 50. Add modifier /S to order Ductile Iron for pressure rating over 3000 psi.

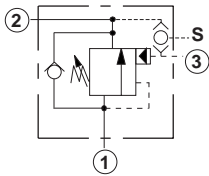
NOTES: Page 50 for cartridge models CB**-* shows performance curves, technical tips, and options.
See page vii for technical information about line mount bodies including SAE flange pattern specifications.
Consult your local Sun Distributor or the Sun Web Site for other port sizes available in the bodies shown above.

THREE PORT LOAD CONTROL APPLICATIONS (90 DEGREE 1.50" SAE FLANGE PORT C61/C62 BODIES WITH SHUTTLE)

PILOT RATIO
3:1, 1.5:1, 2:1

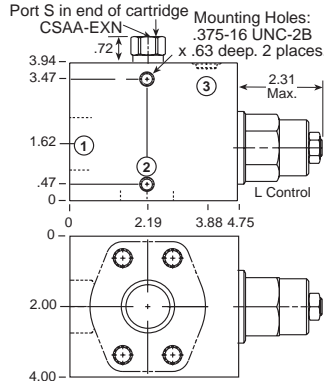
Go to www.sunhydraulics.com
for more product information and pricing.

PILOT RATIO
2.3:1, 4.5:1, 10:1



Ports 1 and 2	Ports Shuttle and 3	Assembly Model Code*
1 1/2" SAE C61	SAE-4	CBI*-LHN-KGR

0-240 GPM Cavity T-19A

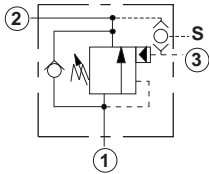


Ports 1 and 2	Ports Shuttle and 3	Assembly Model Code*
1 1/2" SAE C61	SAE-4	CBI*-LJN-KGR

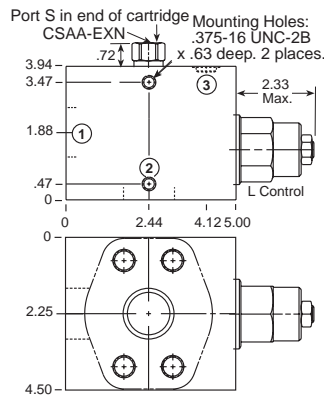
The asterisk () shown in the fourth digit of the model code indicates the counterbalance pilot ratio of the cartridge and must be specified by customer. See page 50. Add modifier /S to order Ductile Iron for pressure rating over 3000 psi.

The asterisk () shown in the fourth digit of the model code indicates the counterbalance pilot ratio of the cartridge and must be specified by customer. See page 50. Add modifier /S to order Ductile Iron for pressure rating over 3000 psi.

0-240 GPM Cavity T-19A



Ports 1 and 2	Ports Shuttle and 3	Assembly Model Code*
1 1/2" SAE C62	SAE-6	CBI*-LHN-KG6



Ports 1 and 2	Ports Shuttle and 3	Assembly Model Code*
1 1/2" SAE C62	SAE-6	CBI*-LJN-KG6

The asterisk () shown in the fourth digit of the model code indicates the counterbalance pilot ratio of the cartridge and must be specified by customer. See page 50. Add modifier /S to order Ductile Iron for pressure rating over 3000 psi.

The asterisk () shown in the fourth digit of the model code indicates the counterbalance pilot ratio of the cartridge and must be specified by customer. See page 50. Add modifier /S to order Ductile Iron for pressure rating over 3000 psi.

NOTES: Page 50 for cartridge models CB**-* shows performance curves, technical tips, and options.
See page vii for technical information about line mount bodies including SAE flange pattern specifications.
Consult your local Sun Distributor or the Sun Web Site for other port sizes available in the bodies shown above.

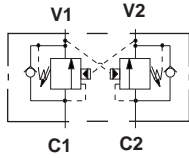
Line Mounted Assemblies

THREE PORT LOAD CONTROL APPLICATIONS (90 DEGREE CROSS-PILOTED BODIES, 2 CAVITIES)

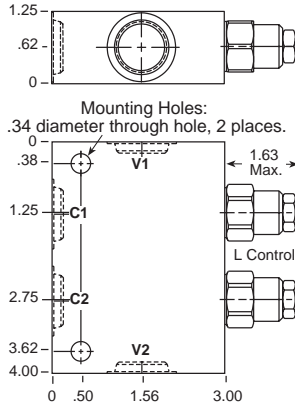
PILOT RATIO
3:1, 1.5:1, 2:1

Go to www.sunhydraulics.com
for more product information and pricing.

PILOT RATIO
2.3:1, 4.5:1, 10:1



0-15 GPM Cavity T-11A

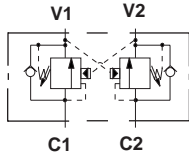


Ports C1, C2, V1 & V2	Assembly Model Code*
3/8" NPTF	CBC*-LHN-YEB
1/2" NPTF	CBC*-LHN-YEC
SAE-6	CBC*-LHN-YEI
SAE-8	CBC*-LHN-YEJ
SAE-10	CBC*-LHN-YEK

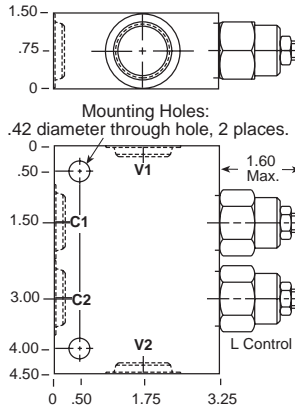
The asterisk () shown in the fourth digit of the model code indicates the counterbalance pilot ratio of the cartridge and must be specified by customer. See page 50. Add modifier /S to order Ductile Iron for pressure rating over 3000 psi.

Ports C1, C2, V1 & V2	Assembly Model Code*
3/8" NPTF	CBC*-LJN-YEB
1/2" NPTF	CBC*-LJN-YEC
SAE-6	CBC*-LJN-YEI
SAE-8	CBC*-LJN-YEJ
SAE-10	CBC*-LJN-YEK

The asterisk () shown in the fourth digit of the model code indicates the counterbalance pilot ratio of the cartridge and must be specified by customer. See page 50. Add modifier /S to order Ductile Iron for pressure rating over 3000 psi.



0-30 GPM Cavity T-2A



Ports C1, C2, V1 & V2	Assembly Model Code*
3/8" NPTF	CBE*-LHN-YAB
1/2" NPTF	CBE*-LHN-YAC
3/4" NPTF	CBE*-LHN-YAD
SAE-10	CBE*-LHN-YAK
SAE-12	CBE*-LHN-YAL

The asterisk () shown in the fourth digit of the model code indicates the counterbalance pilot ratio of the cartridge and must be specified by customer. See page 50. Add modifier /S to order Ductile Iron for pressure rating over 3000 psi.

Ports C1, C2, V1 & V2	Assembly Model Code*
3/8" NPTF	CBE*-LJN-YAB
1/2" NPTF	CBE*-LJN-YAC
3/4" NPTF	CBE*-LJN-YAD
SAE-10	CBE*-LJN-YAK
SAE-12	CBE*-LJN-YAL

The asterisk () shown in the fourth digit of the model code indicates the counterbalance pilot ratio of the cartridge and must be specified by customer. See page 50. Add modifier /S to order Ductile Iron for pressure rating over 3000 psi.

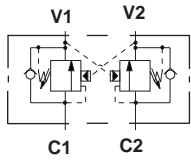
NOTES: Page 50 for cartridge models CB**-*** shows performance curves, technical tips, and options.
See page vii for technical information about line mount bodies including SAE flange pattern specifications.
Consult your local Sun Distributor or the Sun Web Site for other port sizes available in the bodies shown above.
Model Codes printed in red are Preferred Products and are readily available.

THREE PORT LOAD CONTROL APPLICATIONS (90 DEGREE CROSS-PILOTED, 1.50" SAE C61/C62 FLANGE PORT BODIES, 2 CAVITIES)

PILOT RATIO
3:1, 1.5:1, 2:1

Go to www.sunhydraulics.com
for more product information and pricing.

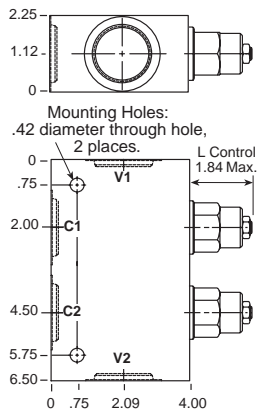
PILOT RATIO
2.3:1, 4.5:1, 10:1



Ports C1, C2, V1 & V2	Assembly Model Code*
1" NPTF	CBG*-LHN-YJE
1 1/4" NPTF	CBG*-LHN-YJF
SAE-12	CBG*-LHN-YJL
SAE-16	CBG*-LHN-YJM

The asterisk () shown in the fourth digit of the model code indicates the counterbalance pilot ratio of the cartridge and must be specified by customer. See page 50. Add modifier /S to order Ductile Iron for pressure rating over 3000 psi.

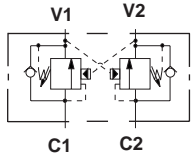
0-60 GPM Cavity T-17A



Ports C1, C2, V1 & V2	Assembly Model Code*
1" NPTF	CBG*-LJN-YJE
1 1/4" NPTF	CBG*-LJN-YJF
SAE-12	CBG*-LJN-YJL
SAE-16	CBG*-LJN-YJM

The asterisk () shown in the fourth digit of the model code indicates the counterbalance pilot ratio of the cartridge and must be specified by customer. See page 50. Add modifier /S to order Ductile Iron for pressure rating over 3000 psi.

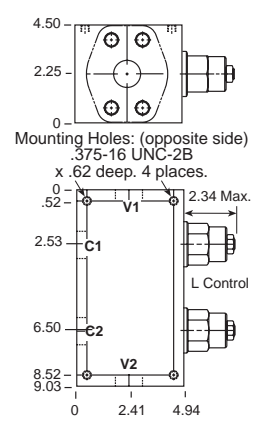
0-120 GPM Cavity T-19A



Ports C1, C2, V1 & V2	Assembly Model Code*
1 1/2" SAE C62	CBI*-LHN-YM6

The asterisk () shown in the fourth digit of the model code indicates the counterbalance pilot ratio of the cartridge and must be specified by customer. See page 50. Add modifier /S to order Ductile Iron for pressure rating over 3000 psi.

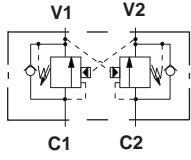
0-120 GPM Cavity T-19A



Ports C1, C2, V1 & V2	Assembly Model Code*
1 1/2" SAE C61	CBI*-LJN-YM6

The asterisk () shown in the fourth digit of the model code indicates the counterbalance pilot ratio of the cartridge and must be specified by customer. See page 50. Add modifier /S to order Ductile Iron for pressure rating over 3000 psi.

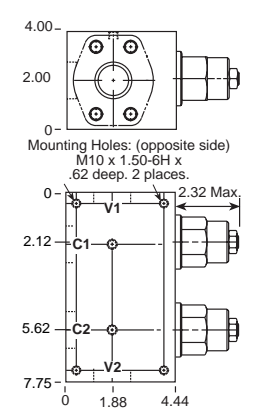
0-120 GPM Cavity T-19A



Ports C1, C2, V1 & V2	Assembly Model Code*
1 1/2" SAE C61	CBI*-LHN-YMR

The asterisk () shown in the fourth digit of the model code indicates the counterbalance pilot ratio of the cartridge and must be specified by customer. See page 50. Add modifier /S to order Ductile Iron for pressure rating over 3000 psi.

0-120 GPM Cavity T-19A



Ports C1, C2, V1 & V2	Assembly Model Code*
1 1/2" SAE C61	CBI*-LJN-YMR

The asterisk () shown in the fourth digit of the model code indicates the counterbalance pilot ratio of the cartridge and must be specified by customer. See page 50. Add modifier /S to order Ductile Iron for pressure rating over 3000 psi.

NOTES: Page 50 for cartridge models CB**_*** shows performance curves, technical tips, and options.
See page vii for technical information about line mount bodies including SAE flange pattern specifications.
Consult your local Sun Distributor or the Sun Web Site for other port sizes available in the bodies shown above.
Model Codes printed in red are Preferred Products and are readily available.

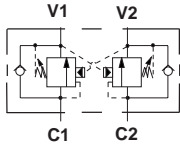
Line Mounted Assemblies

THREE PORT LOAD CONTROL APPLICATIONS (INLINE/INLINE CROSS-PILOTED, 1.50" SAE C61 FLANGE PORT BODIES, 2 CAVITIES)

PILOT RATIO
3:1, 1.5:1, 2:1

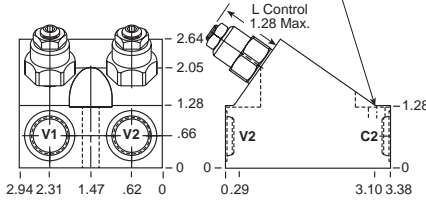
Go to www.sunhydraulics.com
for more product information and pricing.

PILOT RATIO
2.3:1, 4.5:1, 10:1



0-15 GPM Cavity T-11A

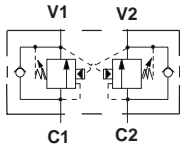
Mounting Holes:
.34 diameter through hole
.88 diameter socket clearance
2 places.



Ports C1, C2, V1 & V2	Assembly Model Code*
3/8" NPTF	CBC*-LHN-XVG
SAE-6	CBC*-LHN-XVH
SAE-8	CBC*-LHN-XVI

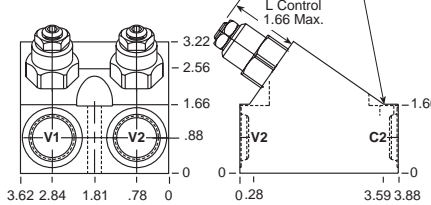
The asterisk () shown in the fourth digit of the model code indicates the counterbalance pilot ratio of the cartridge and must be specified by customer. See page 50. Add modifier /S to order Ductile Iron for pressure rating over 3000 psi.

The asterisk () shown in the fourth digit of the model code indicates the counterbalance pilot ratio of the cartridge and must be specified by customer. See page 50. Add modifier /S to order Ductile Iron for pressure rating over 3000 psi.



0-30 GPM Cavity T-2A

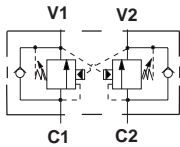
Mounting Holes:
.34 diameter through hole
.88 diameter socket clearance
2 places.



Ports C1, C2, V1 & V2	Assembly Model Code*
SAE-10	CBE*-LHN-XAL
SAE-12	CBE*-LHN-XAK

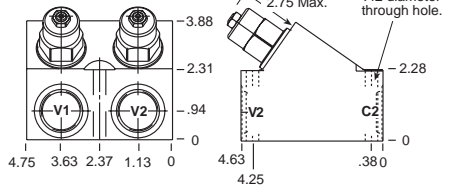
The asterisk () shown in the fourth digit of the model code indicates the counterbalance pilot ratio of the cartridge and must be specified by customer. See page 50. Add modifier /S to order Ductile Iron for pressure rating over 3000 psi.

The asterisk () shown in the fourth digit of the model code indicates the counterbalance pilot ratio of the cartridge and must be specified by customer. See page 50. Add modifier /S to order Ductile Iron for pressure rating over 3000 psi.



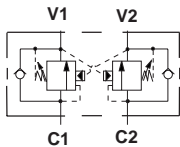
0-60 GPM Cavity T-17A

Mounting Holes:
.42 diameter through hole.



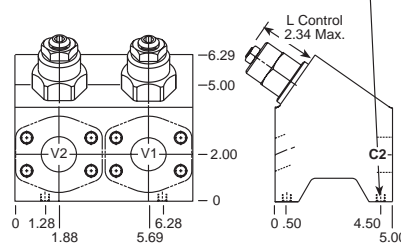
Ports C1, C2, V1 & V2	Assembly Model Code*
SAE-16	CBG*-LHN-XJM
SAE-20	CBG*-LHN-XJL

The asterisk () shown in the fourth digit of the model code indicates the counterbalance pilot ratio of the cartridge and must be specified by customer. See page 50. Add modifier /S to order Ductile Iron for pressure rating over 3000 psi.



0-120 GPM Cavity T-19A

Mounting Holes:
M10 x1.50-6 H x 22.4 deep.
4 places.



Ports C1, C2, V1 & V2	Assembly Model Code*
1 1/2" SAE C61	CBIA-LHN-XZP

The asterisk () shown in the fourth digit of the model code indicates the counterbalance pilot ratio of the cartridge and must be specified by customer. See page 50. Add modifier /S to order Ductile Iron for pressure rating over 3000 psi.

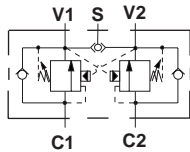
NOTES: Page 50 for cartridge models CB**-* shows performance curves, technical tips, and options. See page vii for technical information about line mount bodies including SAE flange information specifications. Consult your local Sun Distributor or the Sun Web Site for other port sizes available in the bodies shown above.
Model Codes printed in red are Preferred Products and are readily available.

THREE PORT LOAD CONTROL APPLICATIONS (90 DEGREE CROSS-PILOTED BODIES WITH SHUTTLE, 2 CAVITIES)

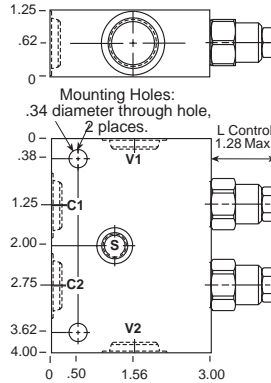
PILOT RATIO
3:1, 1.5:1, 2:1

Go to www.sunhydraulics.com
for more product information and pricing.

PILOT RATIO
2.3:1, 4.5:1, 10:1



0-15 GPM Cavity T-11A

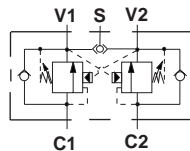


Ports C1, C2, V1 & V2	S Port	Assembly Model Code*
3/8" NPTF	1/4" NPTF	CBC*-LHN-YGB
1/2" NPTF	1/4" NPTF	CBC*-LHN-YGC
SAE-6	SAE-4	CBC*-LHN-YGI
SAE-8	SAE-4	CBC*-LHN-YGJ
SAE-10	SAE-4	CBC*-LHN-YGK

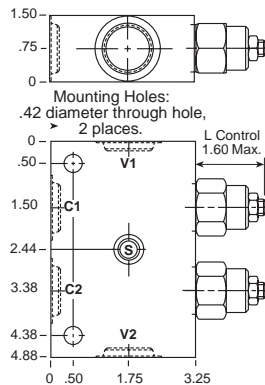
The asterisk () shown in the fourth digit of the model code indicates the counterbalance pilot ratio of the cartridge and must be specified by customer. See page 50. Add modifier /S to order Ductile Iron for pressure rating over 3000 psi.

Ports C1, C2, V1 & V2	S Port	Assembly Model Code*
3/8" NPTF	1/4" NPTF	CBC*-LJN-YGB
1/2" NPTF	1/4" NPTF	CBC*-LJN-YGC
SAE-6	SAE-4	CBC*-LJN-YGI
SAE-8	SAE-4	CBC*-LJN-YGJ
SAE-10	SAE-4	CBC*-LJN-YGK

The asterisk () shown in the fourth digit of the model code indicates the counterbalance pilot ratio of the cartridge and must be specified by customer. See page 50. Add modifier /S to order Ductile Iron for pressure rating over 3000 psi.



0-30 GPM Cavity T-2A

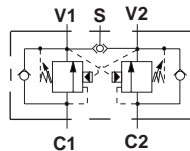


Ports C1, C2, V1 & V2	S Port	Assembly Model Code*
1/2" NPTF	1/4" NPTF	CBE*-LHN-YHC
3/4" NPTF	1/4" NPTF	CBE*-LHN-YHD
SAE-10	SAE-4	CBE*-LHN-YHK
SAE-12	SAE-4	CBE*-LHN-YHL

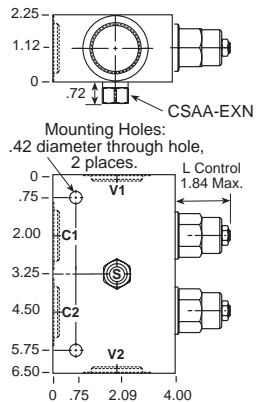
The asterisk () shown in the fourth digit of the model code indicates the counterbalance pilot ratio of the cartridge and must be specified by customer. See page 50. Add modifier /S to order Ductile Iron for pressure rating over 3000 psi.

Ports C1, C2, V1 & V2	S Port	Assembly Model Code*
1/2" NPTF	1/4" NPTF	CBE*-LJN-YHC
3/4" NPTF	1/4" NPTF	CBE*-LJN-YHD
SAE-10	SAE-4	CBE*-LJN-YHK
SAE-12	SAE-4	CBE*-LJN-YHL

The asterisk () shown in the fourth digit of the model code indicates the counterbalance pilot ratio of the cartridge and must be specified by customer. See page 50. Add modifier /S to order Ductile Iron for pressure rating over 3000 psi.



0-60 GPM Cavity T-17A



Ports C1, C2, V1 & V2	S Port	Assembly Model Code*
1" NPTF	SAE-4	CBG*-LHN-YKE
1 1/4" NPTF	SAE-4	CBG*-LHN-YKF
SAE-12	SAE-4	CBG*-LHN-YKL
SAE-16	SAE-4	CBG*-LHN-YKM

The asterisk () shown in the fourth digit of the model code indicates the counterbalance pilot ratio of the cartridge and must be specified by customer. See page 50. Add modifier /S to order Ductile Iron for pressure rating over 3000 psi.

Ports C1, C2, V1 & V2	S Port	Assembly Model Code*
1" NPTF	SAE-4	CBG*-LJN-YKE
1 1/4" NPTF	SAE-4	CBG*-LJN-YKF
SAE-12	SAE-4	CBG*-LJN-YKL
SAE-16	SAE-4	CBG*-LJN-YKM

The asterisk () shown in the fourth digit of the model code indicates the counterbalance pilot ratio of the cartridge and must be specified by customer. See page 50. Add modifier /S to order Ductile Iron for pressure rating over 3000 psi.

NOTES: Page 50 for cartridge models CB**-* shows performance curves, technical tips, and options.
See page vii for technical information about line mount bodies including SAE flange pattern specifications.
Consult your local Sun Distributor or the Sun Web Site for other port sizes available in the bodies shown above.

Line Mounted Assemblies

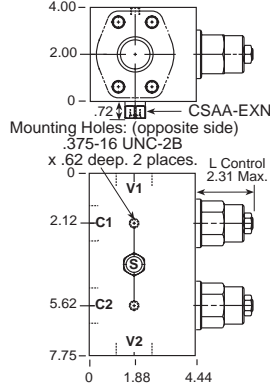
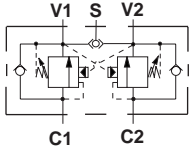
**THREE PORT LOAD CONTROL APPLICATIONS
(CROSS-PILOTED 1.50" SAE C61/C62 FLANGE PORT BODIES WITH SHUTTLE, 2 CAVITIES)**

**PILOT RATIO
3:1, 1.5:1, 2:1**

Go to www.sunhydraulics.com
for more product information and pricing.

**PILOT RATIO
2.3:1, 4.5:1, 10:1**

0-120 GPM Cavity T-19A



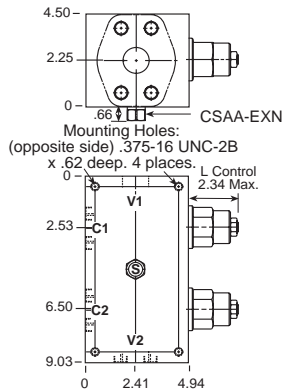
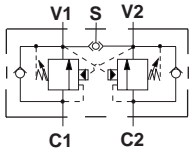
Ports C1, C2, V1, V2	S Port	Assembly Model Code*
1 1/2" SAE C61	SAE-4	CBI*-LHN-YNR

Ports C1, C2, V1, V2	S Port	Assembly Model Code*
1 1/2" SAE C61	SAE-4	CBI*-LJN-YNR

The asterisk () shown in the fourth digit of the model code indicates the counterbalance pilot ratio of the cartridge and must be specified by customer. See page 50. Add modifier /S to order Ductile Iron for pressure rating over 3000 psi.

The asterisk () shown in the fourth digit of the model code indicates the counterbalance pilot ratio of the cartridge and must be specified by customer. See page 50. Add modifier /S to order Ductile Iron for pressure rating over 3000 psi.

0-120 GPM Cavity T-19A



Ports C1, C2, V1, V2	S Port	Assembly Model Code*
1 1/2" SAE C62	SAE-4	CBI*-LHN-YN6

Ports C1, C2, V1, V2	S Port	Assembly Model Code*
1 1/2" SAE C62	SAE-4	CBI*-LJN-YN6

The asterisk () shown in the fourth digit of the model code indicates the counterbalance pilot ratio of the cartridge and must be specified by customer. See page 50. Add modifier /S to order Ductile Iron for pressure rating over 3000 psi.

The asterisk () shown in the fourth digit of the model code indicates the counterbalance pilot ratio of the cartridge and must be specified by customer. See page 50. Add modifier /S to order Ductile Iron for pressure rating over 3000 psi.

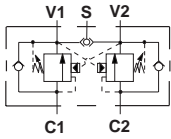
NOTES: Page 50 for cartridge models CB**_*** shows performance curves, technical tips, and options.
See page vii for technical information about line mount bodies including SAE flange pattern specifications.
Consult your local Sun Distributor or the Sun Web Site for other port sizes available in the bodies shown above.

THREE PORT LOAD CONTROL APPLICATIONS (INLINE CROSS-PILOTED BODIES WITH SHUTTLE, 2 CAVITIES)

PILOT RATIO
3:1, 1.5:1, 2:1

Go to www.sunhydraulics.com
for more product information and pricing.

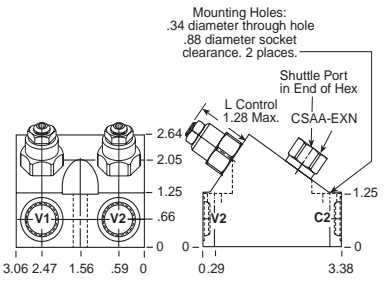
PILOT RATIO
2.3:1, 4.5:1, 10:1



Ports C1, C2, V1, V2	Shuttle Port	Assembly Model Code*
3/8" NPTF	SAE-4	CBC*-LHN-XGB
SAE-6	SAE-4	CBC*-LHN-XGI
SAE-8	SAE-4	CBC*-LHN-XGJ

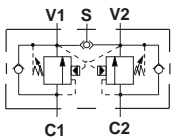
The asterisk () shown in the fourth digit of the model code indicates the counterbalance pilot ratio of the cartridge and must be specified by customer. See page 50. Add modifier /S to order Ductile Iron for pressure rating over 3000 psi.

0-15 GPM Cavity T-11A



Ports C1, C2, V1, V2	Shuttle Port	Assembly Model Code*
3/8" NPTF	SAE-4	CBC*-LJN-XGB
SAE-6	SAE-4	CBC*-LJN-XGI
SAE-8	SAE-4	CBC*-LJN-XGJ

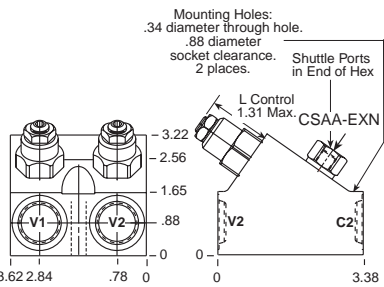
The asterisk () shown in the fourth digit of the model code indicates the counterbalance pilot ratio of the cartridge and must be specified by customer. See page 50. Add modifier /S to order Ductile Iron for pressure rating over 3000 psi.



Ports C1, C2, V1, V2	Shuttle Port	Assembly Model Code*
1/2" NPTF	SAE-4	CBE*-LHN-XHC
3/4" NPTF	SAE-4	CBE*-LHN-XHD

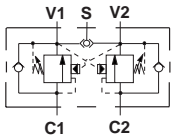
The asterisk () shown in the fourth digit of the model code indicates the counterbalance pilot ratio of the cartridge and must be specified by customer. See page 50. Add modifier /S to order Ductile Iron for pressure rating over 3000 psi.

0-30 GPM Cavity T-2A



Ports C1, C2, V1, V2	Shuttle Port	Assembly Model Code*
1/2" NPTF	SAE-4	CBE*-LJN-XHC
3/4" NPTF	SAE-4	CBE*-LJN-XHD

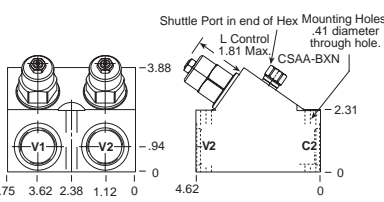
The asterisk () shown in the fourth digit of the model code indicates the counterbalance pilot ratio of the cartridge and must be specified by customer. See page 50. Add modifier /S to order Ductile Iron for pressure rating over 3000 psi.



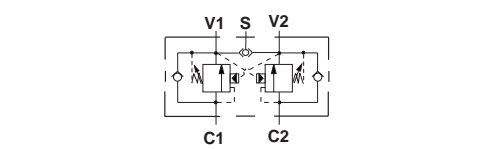
Ports C1, C2, V1, V2	Shuttle Port	Assembly Model Code*
3/4" NPTF	SAE-4	CBE*-LHN-XKD
1" NPTF	SAE-4	CBE*-LHN-XKE

The asterisk () shown in the fourth digit of the model code indicates the counterbalance pilot ratio of the cartridge and must be specified by customer. See page 50. Add modifier /S to order Ductile Iron for pressure rating over 3000 psi.

0-60 GPM Cavity T-17A



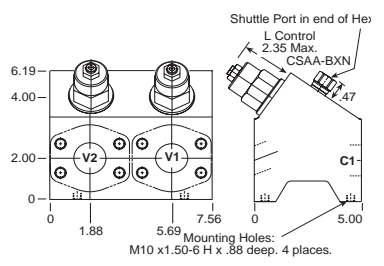
Ports C1, C2, V1, V2	Shuttle Port	Assembly Model Code*
3/4" NPTF	SAE-4	CBE*-LHN-XKD
1" NPTF	SAE-4	CBE*-LHN-XKE



Ports C1, C2, V1, V2	Shuttle Port	Assembly Model Code*
1 1/2" C61	SAE-4	CBE*-LHN-XZQ

The asterisk () shown in the fourth digit of the model code indicates the counterbalance pilot ratio of the cartridge and must be specified by customer. See page 50. Add modifier /S to order Ductile Iron for pressure rating over 3000 psi.

0-120 GPM Cavity T-19A



Ports C1, C2, V1, V2	Shuttle Port	Assembly Model Code*
1 1/2" C61	SAE-4	CBE*-LJN-XZQ

NOTES: Page 50 for cartridge models CB**-* shows performance curves, technical tips, and options. See page vii for technical information about line mount bodies including SAE flange pattern specifications. Consult your local Sun Distributor or the Sun Web Site for other port sizes available in the bodies shown above.

Line Mounted Assemblies

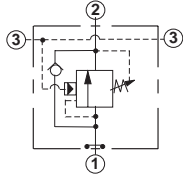
THREE PORT LOAD CONTROL APPLICATIONS (DIRECT MOUNT .75"/1.00"/1.25" SAE C61 FLANGE PORT BODIES, THROUGH PILOT)

The direct mounted SAE flange port bodies provide the opportunity to mount load control valves directly onto the ports of an actuator.

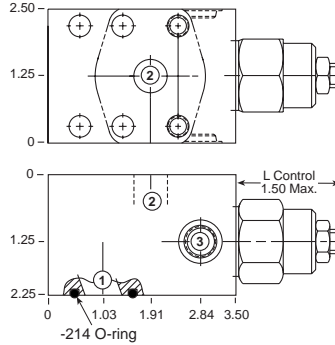
PILOT RATIO
3:1, 1.5:1, 2:1

Go to www.sunhydraulics.com
for more product information and pricing.

PILOT RATIO
2.3:1, 4.5:1, 10:1



0-30 GPM Cavity T-2A

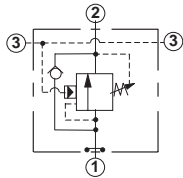


Ports 1 and 2	Port 3	Assembly Model Code*
3/4" SAE C61	SAE-6	CBE*-LHN-ZNV

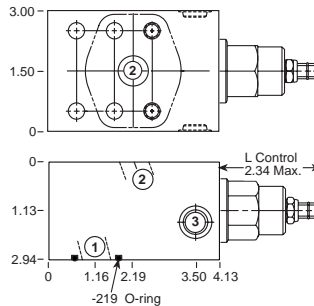
Ports 1 and 2	Port 3	Assembly Model Code*
3/4" SAE C61	SAE-6	CBE*-LJN-ZNV

The asterisk () shown in the fourth digit of the model code indicates the counterbalance pilot ratio of the cartridge and must be specified by customer. See page 50. Add modifier /S to order Ductile Iron for pressure rating over 3000 psi.

The asterisk () shown in the fourth digit of the model code indicates the counterbalance pilot ratio of the cartridge and must be specified by customer. See page 50. Add modifier /S to order Ductile Iron for pressure rating over 3000 psi.



0-30 GPM Cavity T-17A

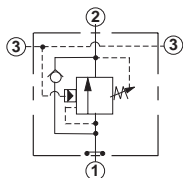


Ports 1 and 2	Port 3	Assembly Model Code*
1" SAE C61	SAE-6	CBG*-LHN-ZNV

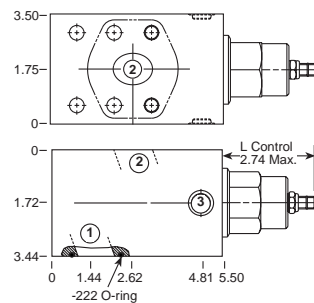
Ports 1 and 2	Port 3	Assembly Model Code*
1/2" NPTF	SAE-8	CBG*-LJN-ZNV

The asterisk () shown in the fourth digit of the model code indicates the counterbalance pilot ratio of the cartridge and must be specified by customer. See page 50. Add modifier /S to order Ductile Iron for pressure rating over 3000 psi.

The asterisk () shown in the fourth digit of the model code indicates the counterbalance pilot ratio of the cartridge and must be specified by customer. See page 50. Add modifier /S to order Ductile Iron for pressure rating over 3000 psi.



0-60 GPM Cavity T-19A



Ports 1 and 2	Port 3	Assembly Model Code*
1 1/4 SAE C61	SAE-6	CBG*-LHN-ZNX

Ports 1 and 2	Port 3	Assembly Model Code*
1 1/4 SAE C6		CBG*-LJN-ZNX

The asterisk () shown in the fourth digit of the model code indicates the counterbalance pilot ratio of the cartridge and must be specified by customer. See page 50. Add modifier /S to order Ductile Iron for pressure rating over 3000 psi.

The asterisk () shown in the fourth digit of the model code indicates the counterbalance pilot ratio of the cartridge and must be specified by customer. See page 50. Add modifier /S to order Ductile Iron for pressure rating over 3000 psi.

NOTES: Page 50 for cartridge models CB**-* shows performance curves, technical tips, and options.
See page vii for technical information about line mount bodies including SAE flange pattern specifications.
Consult your local Sun Distributor or the Sun Web Site for other port sizes available in the bodies shown above.

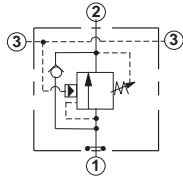
THREE PORT LOAD CONTROL APPLICATIONS (DIRECT MOUNT .75"/1.00"/1.25" SAE C62 FLANGE BODIES, THROUGH PILOT)

The direct mounted SAE flange port bodies provide the opportunity to mount load control valves directly onto the ports of an actuator.

PILOT RATIO
3:1, 1.5:1, 2:1

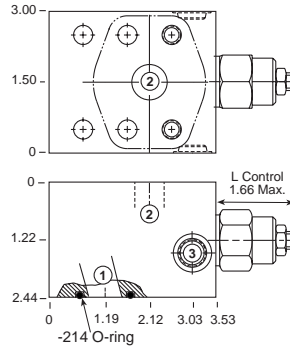
Go to www.sunhydraulics.com
for more product information and pricing.

PILOT RATIO
2.3:1, 4.5:1, 10:1



Ports 1 and 2	Port 3	Assembly Model Code*
3/4" SAE C62	SAE-6	CBE*-LHN-ZDS

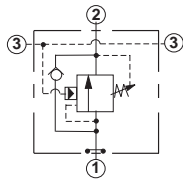
0-30 GPM Cavity T-2A



Ports 1 and 2	Port 3	Assembly Model Code*
3/4" SAE C62	SAE-6	CBE*-LJN-ZDS

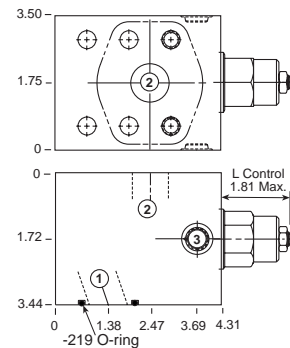
The asterisk () shown in the fourth digit of the model code indicates the counterbalance pilot ratio of the cartridge and must be specified by customer. See page 50. Add modifier /S to order Ductile Iron for pressure rating over 3000 psi.

The asterisk () shown in the fourth digit of the model code indicates the counterbalance pilot ratio of the cartridge and must be specified by customer. See page 50. Add modifier /S to order Ductile Iron for pressure rating over 3000 psi.



Ports 1 and 2	Port 3	Assembly Model Code*
1" SAE C62	SAE-6	CBG*-LHN-ZDR

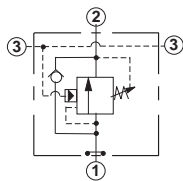
0-60 GPM Cavity T-17A



Ports 1 and 2	Port 3	Assembly Model Code*
1" SAE C62	SAE-6	CBG*-LJN-ZDR

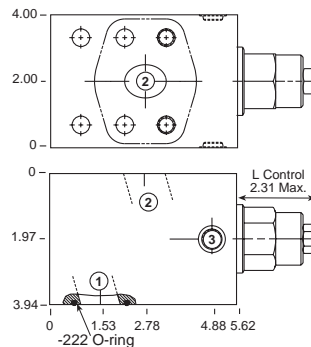
The asterisk () shown in the fourth digit of the model code indicates the counterbalance pilot ratio of the cartridge and must be specified by customer. See page 50. Add modifier /S to order Ductile Iron for pressure rating over 3000 psi.

The asterisk () shown in the fourth digit of the model code indicates the counterbalance pilot ratio of the cartridge and must be specified by customer. See page 50. Add modifier /S to order Ductile Iron for pressure rating over 3000 psi.



Ports 1 and 2	Port 3	Assembly Model Code*
1 1/4" SAE C62	SAE-6	CBI*-LHN-ZFD

0-120 GPM Cavity T-19A



Ports 1 and 2	Port 3	Assembly Model Code*
1 1/4" SAE C62	SAE-6	CBI*-LJN-ZFD

The asterisk () shown in the fourth digit of the model code indicates the counterbalance pilot ratio of the cartridge and must be specified by customer. See page 50. Add modifier /S to order Ductile Iron for pressure rating over 3000 psi.

The asterisk () shown in the fourth digit of the model code indicates the counterbalance pilot ratio of the cartridge and must be specified by customer. See page 50. Add modifier /S to order Ductile Iron for pressure rating over 3000 psi.

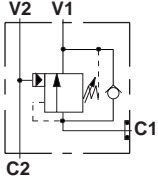
NOTES: Page 50 for cartridge models CB**-* shows performance curves, technical tips, and options.
See page vii for technical information about line mount bodies including SAE flange pattern specifications.
Consult your local Sun Distributor or the Sun Web Site for other port sizes available in the bodies shown above.

Line Mounted Assemblies

THREE PORT LOAD CONTROL APPLICATIONS (GASKET MOUNT BODIES)

These compact gasket-mounted bodies provide the opportunity to mount load control valves directly onto the ports of an actuator.

PILOT RATIO
3:1, 1.5:1, 2:1

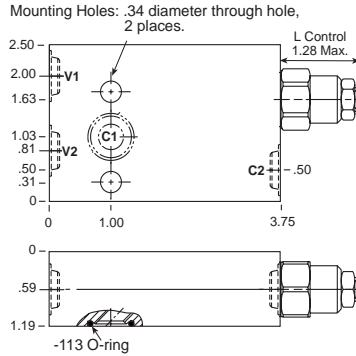


Ports C2, V1 & V2	Assembly Model Code*
3/8" NPTF	CBC*-LHN-ZTN
SAE-6	CBC*-LHN-ZTC

The asterisk () shown in the fourth digit of the model code indicates the counterbalance pilot ratio of the cartridge and must be specified by customer. See page 50. Add modifier /S to order Ductile Iron for pressure rating over 3000 psi.

Go to www.sunhydraulics.com
for more product information and pricing.

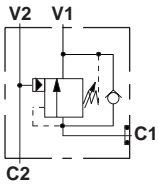
0-15 GPM Cavity T-11A



PILOT RATIO
2.3:1, 4.5:1, 10:1

Ports C2, V1 & V2	Assembly Model Code*
3/8" NPTF	CBC*-LJN-ZTN
SAE-6	CBC*-LJN-ZTC

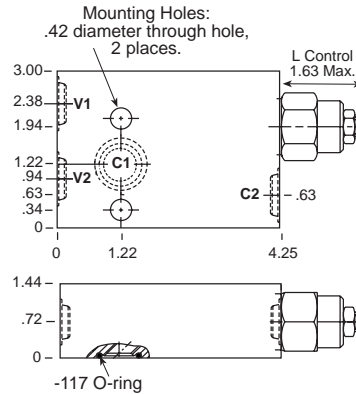
The asterisk () shown in the fourth digit of the model code indicates the counterbalance pilot ratio of the cartridge and must be specified by customer. See page 50. Add modifier /S to order Ductile Iron for pressure rating over 3000 psi.



Ports C2, V1 & V2	Assembly Model Code*
1/2" NPTF	CBE*-LHN-ZTF
SAE-8	CBE*-LHN-ZTG

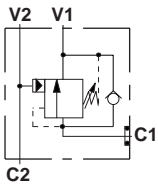
The asterisk () shown in the fourth digit of the model code indicates the counterbalance pilot ratio of the cartridge and must be specified by customer. See page 50. Add modifier /S to order Ductile Iron for pressure rating over 3000 psi.

0-30 GPM Cavity T-2A



Ports C2, V1 & V2	Assembly Model Code*
1/2" NPTF	CBE*-LJN-ZTF
SAE-8	CBE*-LJN-ZTG

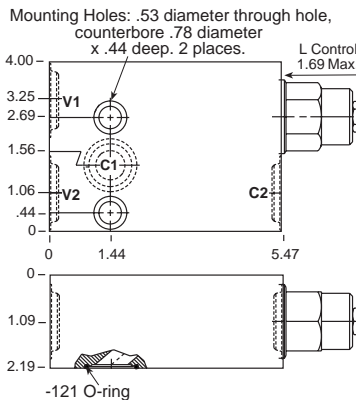
The asterisk () shown in the fourth digit of the model code indicates the counterbalance pilot ratio of the cartridge and must be specified by customer. See page 50. Add modifier /S to order Ductile Iron for pressure rating over 3000 psi.



Ports C2, V1 & V2	Assembly Model Code*
3/4" NPTF	CBG*-LHN-ZTJ
SAE-12	CBG*-LHN-ZTK

The asterisk () shown in the fourth digit of the model code indicates the counterbalance pilot ratio of the cartridge and must be specified by customer. See page 50. Add modifier /S to order Ductile Iron for pressure rating over 3000 psi.

0-60 GPM Cavity T-17A



Ports C2, V1 & V2	Assembly Model Code*
3/4" NPTF	CBG*-LJN-ZTJ
SAE-12	CBG*-LJN-ZTK

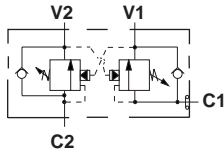
The asterisk () shown in the fourth digit of the model code indicates the counterbalance pilot ratio of the cartridge and must be specified by customer. See page 50. Add modifier /S to order Ductile Iron for pressure rating over 3000 psi.

NOTES: Page 50 for cartridge models CB**.* shows performance curves, technical tips, and options.
See page vii for technical information about line mount bodies including SAE flange pattern specifications.
Consult your local Sun Distributor or the Sun Web Site for other port sizes available in the bodies shown above.
Model Codes printed in red are Preferred Products and are readily available.

THREE PORT LOAD CONTROL APPLICATIONS (GASKET MOUNT BODIES, 2 CAVITIES)

The gasket-mounted bodies provide the opportunity to mount load control valves directly onto the ports of an actuator.

**PILOT RATIO
3:1, 1.5:1**

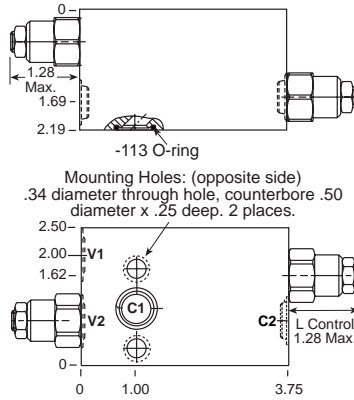


Ports C2, V1 & V2	Assembly Model Code*
3/8" NPTF	CBC*-LHN-YVM
SAE-6	CBC*-LHN-YVY

The asterisk () shown in the fourth digit of the model code indicates the counterbalance pilot ratio of the cartridge and must be specified by customer. See page 50. Add modifier / **S** to order Ductile Iron for pressure rating over 3000 psi.

Go to www.sunhydraulics.com for more product information and pricing.

0-15 GPM Cavity T-11A



**PILOT RATIO
2.3:1, 4.5:1, 10:1**

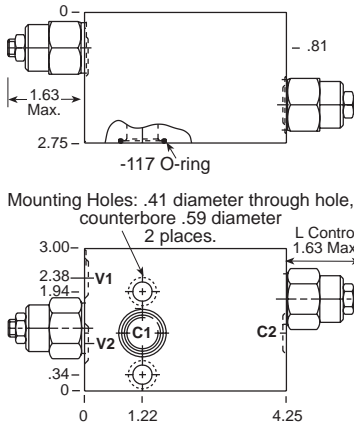
Ports C2, V1 & V2	Assembly Model Code*
3/8" NPTF	CBC*-LJN-YVM
SAE-6	CBC*-LJN-YVY

The asterisk () shown in the fourth digit of the model code indicates the counterbalance pilot ratio of the cartridge and must be specified by customer. See page 50. Add modifier / **S** to order Ductile Iron for pressure rating over 3000 psi.

Ports C2, V1 & V2	Assembly Model Code*
1/2" NPTF	CBE*-LHN-YVM
SAE-8	CBE*-LHN-YVY

The asterisk () shown in the fourth digit of the model code indicates the counterbalance pilot ratio of the cartridge and must be specified by customer. See page 50. Add modifier / **S** to order Ductile Iron for pressure rating over 3000 psi.

0-30 GPM Cavity T-2A



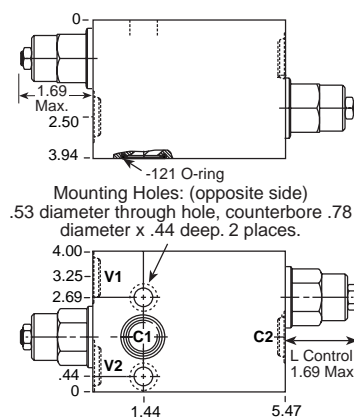
Ports C2, V1 & V2	Assembly Model Code*
1/2" NPTF	CBE*-LJN-YVM
SAE-8	CBE*-LJN-YVY

The asterisk () shown in the fourth digit of the model code indicates the counterbalance pilot ratio of the cartridge and must be specified by customer. See page 50. Add modifier / **S** to order Ductile Iron for pressure rating over 3000 psi.

Ports C2, V1 & V2	Assembly Model Code*
3/4" NPTF	CBG*-LHN-YVT
SAE-12	CBG*-LHN-YVS

The asterisk () shown in the fourth digit of the model code indicates the counterbalance pilot ratio of the cartridge and must be specified by customer. See page 50. Add modifier / **S** to order Ductile Iron for pressure rating over 3000 psi.

0-60 GPM Cavity T-17A



Ports C2, V1 & V2	Assembly Model Code*
3/4" NPTF	CBG*-LJN-YVT
SAE-12	CBG*-LJN-YVS

The asterisk () shown in the fourth digit of the model code indicates the counterbalance pilot ratio of the cartridge and must be specified by customer. See page 50. Add modifier / **S** to order Ductile Iron for pressure rating over 3000 psi.

NOTES: Page 50 for cartridge models CB**-* shows performance curves, technical tips, and options. See page vii for technical information about line mount bodies including SAE flange pattern specifications. Consult your local Sun Distributor or the Sun Web Site for other port sizes available in the bodies shown above.