

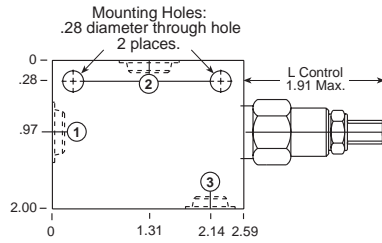
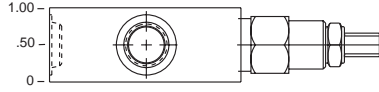
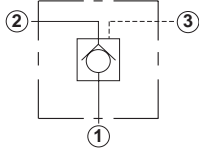
## Line Mounted Assemblies

# THREE PORT PILOT-TO-OPEN CHECK APPLICATIONS (90 DEGREE BODIES)

### PILOT OPERATED ASSEMBLIES

Go to [www.sunhydraulics.com](http://www.sunhydraulics.com)  
for more product information and pricing.

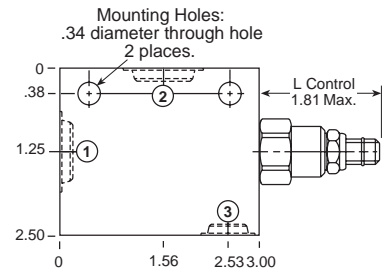
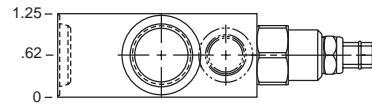
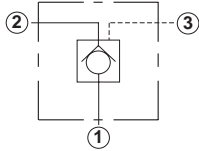
### 0-7.5 GPM Cavity T-163A



Ports 1 and 2	Port 3	Assembly Model Code*
1/4" NPTF	1/4" NPTF	<b>CKBB-XCN-JCA</b>
3/8" NPTF	1/4" NPTF	<b>CKBB-XCN-JCB</b>
SAE-4	SAE-4	<b>CKBB-XCN-JCH</b>
<b>SAE-6</b>	<b>SAE-4</b>	<b>CKBB-XCN-JCI</b>

\*Add modifier /S to order Ductile Iron for pressure rating over 3000 psi.

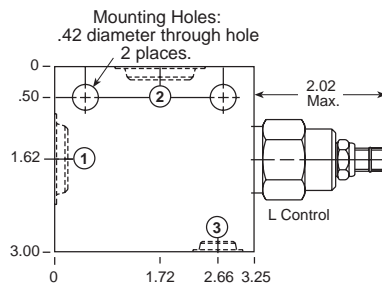
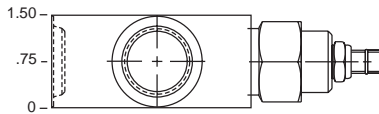
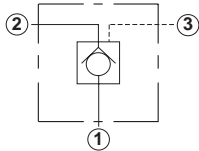
### 0-15 GPM Cavity T-11A



Ports 1 and 2	Port 3	Assembly Model Code*
3/8" NPTF	1/4" NPTF	<b>CKCB-XCN-ECB</b>
1/2" NPTF	1/4" NPTF	<b>CKCB-XCN-ECC</b>
SAE-4	SAE-4	<b>CKCB-XCN-ECH</b>
SAE-6	SAE-6	<b>CKCB-XCN-ECI</b>
<b>SAE-8</b>	<b>SAE-6</b>	<b>CKCB-XCN-ECJ</b>

\*Add modifier /S to order Ductile Iron for pressure rating over 3000 psi.

### 0-30 GPM Cavity T-2A



Ports 1 and 2	Port 3	Assembly Model Code*
1/2" NPTF	1/4" NPTF	<b>CKEB-XCN-BCC</b>
3/4" NPTF	1/4" NPTF	<b>CKEB-XCN-BCD</b>
SAE-6	SAE-6	<b>CKEB-XCN-BCI</b>
<b>SAE-8</b>	<b>SAE-6</b>	<b>CKEB-XCN-BCJ</b>

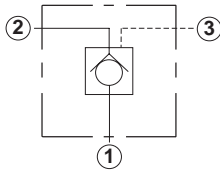
\*Add modifier /S to order Ductile Iron for pressure rating over 3000 psi.

NOTES: Page 78 for cartridge model CK\*B-\*\*\* shows performance curves, technical tips, and options.  
See page vii for technical information about line mount bodies including SAE flange pattern specifications.  
Consult your local Sun Distributor or the Sun Web Site for other port sizes available in the bodies shown above.  
Model Codes printed in red are Preferred Products and are readily available.

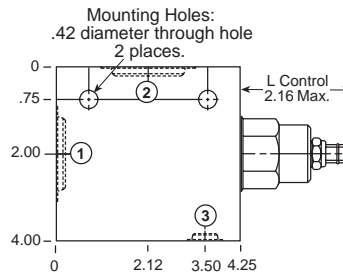
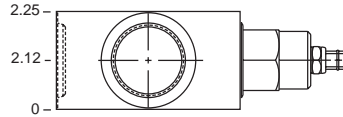
# THREE PORT PILOT-TO-OPEN CHECK APPLICATIONS (90 DEGREE BODIES)

## PILOT OPERATED ASSEMBLIES

Go to [www.sunhydraulics.com](http://www.sunhydraulics.com) for more product information and pricing.



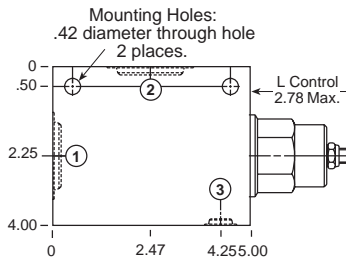
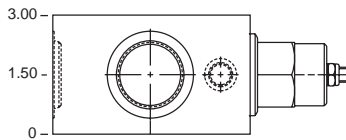
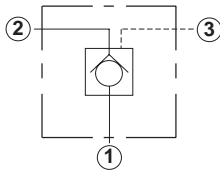
### 0-60 GPM Cavity T-17A



Ports 1 and 2	Port 3	Assembly Model Code*
1" NPTF	1/4" NPTF	<b>CKGB-XCN-HCE</b>
1 1/4" NPTF	1/4" NPTF	<b>CKGB-XCN-HCF</b>
SAE-12	SAE-6	<b>CKGB-XCN-HCL</b>
SAE-16	SAE-6	<b>CKGB-XCN-HCM</b>

\*Add modifier /S to order Ductile Iron for pressure rating over 3000 psi.

### 0-120 GPM Cavity T-19A



Ports 1 and 2	Port 3	Assembly Model Code*
1" NPTF	1/4" NPTF	<b>CKIB-XCN-KCE</b>
1 1/4" NPTF	1/4" NPTF	<b>CKIB-XCN-KCF</b>
SAE-16	SAE-6	<b>CKIB-XCN-KCM</b>
SAE-20	SAE-6	<b>CKIB-XCN-KCN</b>

\*Add modifier /S to order Ductile Iron for pressure rating over 3000 psi.

NOTES: Page 78 for cartridge model CK\*B-\*\*\* shows performance curves, technical tips, and options.  
See page vii for technical information about line mount bodies including SAE flange pattern specifications.  
Consult your local Sun Distributor or the Sun Web Site for other port sizes available in the bodies shown above.  
Model Codes printed in red are Preferred Products and are readily available.

## Line Mounted Assemblies

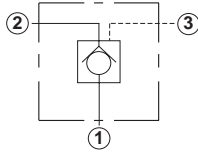
# THREE PORT PILOT-TO-OPEN CHECK APPLICATIONS (INLINE BODIES)

### PILOT OPERATED ASSEMBLIES

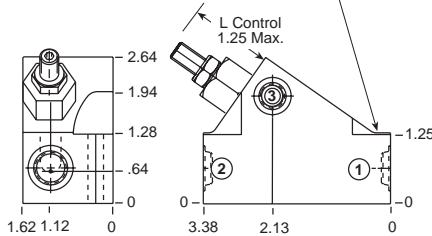
Go to [www.sunhydraulics.com](http://www.sunhydraulics.com)  
for more product information and pricing.

**0-7.5 GPM**

**Cavity T-163A**



Mounting Holes:  
.28 diameter through  
2 places.  
Counterbore for  
1/4 bolt.

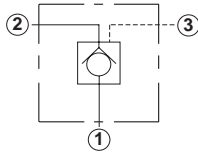


Ports 1 and 2	Port 3	Assembly Model Code*
1/4" NPTF	1/4" NPTF	<b>CKBB-XCN-JJA</b>
3/8" NPTF	1/4" NPTF	<b>CKBB-XCN-JJB</b>
SAE-4	SAE-4	<b>CKBB-XCN-JJH</b>
SAE-6	SAE-4	<b>CKBB-XCN-JJI</b>

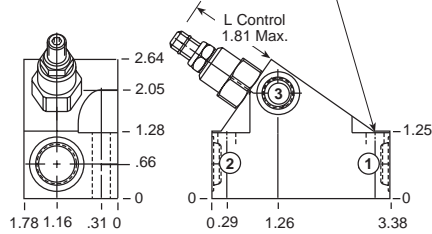
\*Add modifier /S to order Ductile Iron for pressure rating  
over 3000 psi.

**0-15 GPM**

**Cavity T-11A**



Mounting Holes:  
.34 diameter through  
2 places.  
Counterbore for  
5/16 bolt.



Ports 1 and 2	Port 3	Assembly Model Code*
3/8" NPTF	1/4" NPTF	<b>CKCB-XCN-EJB</b>
SAE-6	SAE-6	<b>CKCB-XCN-EJI</b>
SAE-8	SAE-6	<b>CKCB-XCN-EJJ</b>

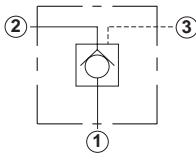
\*Add modifier /S to order Ductile Iron for pressure rating  
over 3000 psi.

NOTES: Page 78 for cartridge model CK\*B-\*\*\* shows performance curves, technical tips, and options.  
See page vii for technical information about line mount bodies including SAE flange pattern specifications.  
Consult your local Sun Distributor or the Sun Web Site for other port sizes available in the bodies shown above.  
Model Codes printed in red are Preferred Products and are readily available.

# THREE PORT PILOT-TO-OPEN CHECK APPLICATIONS (INLINE BODIES)

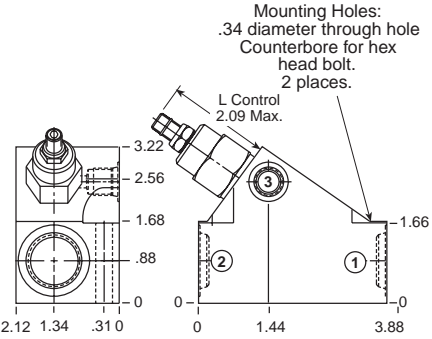
## PILOT OPERATED ASSEMBLIES

Go to [www.sunhydraulics.com](http://www.sunhydraulics.com) for more product information and pricing.



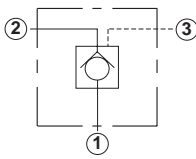
### 0-30 GPM Cavity T-2A

Ports 1 and 2	Port 3	Assembly Model Code*
1/2" NPTF	1/4" NPTF	<b>CKEB-XCN-BVC</b>
3/4" NPTF	1/4" NPTF	<b>CKEB-XCN-BVD</b>
SAE-6	SAE-6	<b>CKEB-XCN-BVI</b>
<b>SAE-8</b>	<b>SAE-6</b>	<b>CKEB-XCN-BVJ</b>

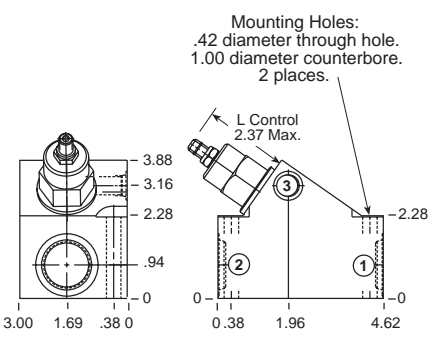


\*Add modifier **/S** to order Ductile Iron for pressure rating over 3000 psi.

### 0-60 GPM Cavity T-17A



Ports 1 and 2	Port 3	Assembly Model Code*
3/4" NPTF	1/4" NPTF	<b>CKGB-XCN-HDD</b>
1" NPTF	1/4" NPTF	<b>CKGB-XCN-HDE</b>
SAE-12	SAE-6	<b>CKGB-XCN-HDL</b>
SAE-16	SAE-6	<b>CKGB-XCN-HDM</b>



\*Add modifier **/S** to order Ductile Iron for pressure rating over 3000 psi.

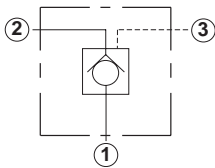
NOTES: Page 78 for cartridge model CK\*B-\*\*\* shows performance curves, technical tips, and options.  
See page vii for technical information about line mount bodies including SAE flange pattern specifications.  
Consult your local Sun Distributor or the Sun Web Site for other port sizes available in the bodies shown above.  
Model Codes printed in red are Preferred Products and are readily available.

## Line Mounted Assemblies

# THREE PORT PILOT-TO-OPEN CHECK APPLICATIONS (90 DEGREE 2.00" SAE C61/C62 FLANGE PORT BODIES, 2 CAVITIES)

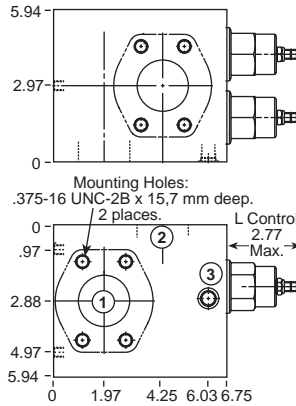
### PILOT OPERATED ASSEMBLIES

Go to [www.sunhydraulics.com](http://www.sunhydraulics.com)  
for more product information and pricing.

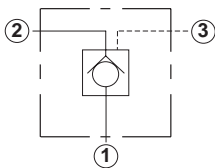


Ports 1 and 2	Port 3	Assembly Model Code*
2" SAE C61	SAE-6	<b>CKIB-XCN-XZZ</b>

### 0-240 GPM Cavity T-19A

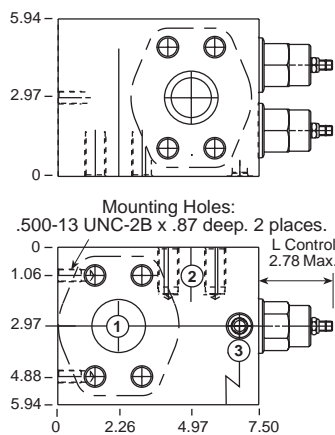


\*Add modifier **/S** to order Ductile Iron for pressure rating over 3000 psi.



Ports 1 and 2	Port 3	Assembly Model Code*
2" SAE C62	SAE-6	<b>CKIB-XCN-Z8Z</b>

### 0-240 GPM Cavity T-19A



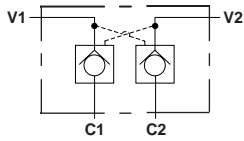
\*Add modifier **/S** to order Ductile Iron for pressure rating over 3000 psi.

NOTES: Page 78 for cartridge model CK\*B-\*\*\* shows performance curves, technical tips, and options.  
See page vii for technical information about line mount bodies including SAE flange pattern specifications.  
Consult your local Sun Distributor or the Sun Web Site for other port sizes available in the bodies shown above.

**THREE PORT PILOT-TO-OPEN CHECK APPLICATIONS  
(90 DEGREE CROSS-PILOTED BODIES, 2 CAVITIES)**

**PILOT OPERATED  
ASSEMBLIES**

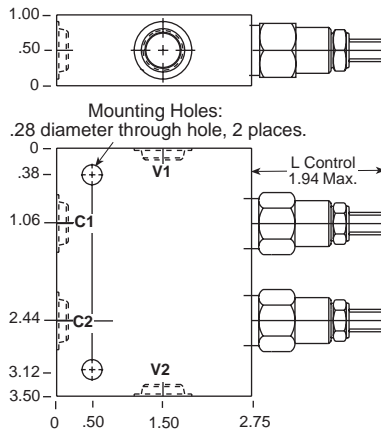
Go to [www.sunhydraulics.com](http://www.sunhydraulics.com)  
for more product information and pricing.



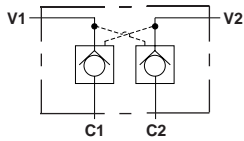
Ports C1, C2, V1 & V2	Assembly Model Code*
1/4" NPTF	<b>CKBB-XCN-JYA</b>
3/8" NPTF	<b>CKBB-XCN-JYB</b>
1/2" NPTF	<b>CKBB-XCN-JYH</b>
SAE-6	<b>CKBB-XCN-JYI</b>

\*Add modifier **/S** to order Ductile Iron for pressure rating over 3000 psi.

**0-7.5 GPM Cavity T-163A**

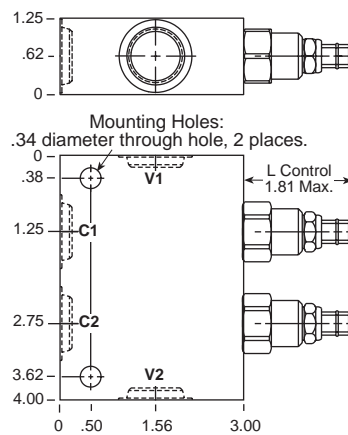


**0-15 GPM Cavity T-11A**



Ports C1, C2, V1 & V2	Assembly Model Code*
3/8" NPTF	<b>CKCB-XCN-YEB</b>
1/2" NPTF	<b>CKCB-XCN-YEC</b>
SAE-6	<b>CKCB-XCN-YEI</b>
SAE-8	<b>CKCB-XCN-YEJ</b>
SAE-10	<b>CKCB-XCN-YEK</b>

\*Add modifier **/S** to order Ductile Iron for pressure rating over 3000 psi.



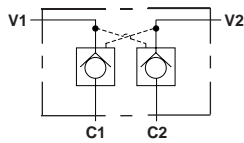
NOTES: Page 78 for cartridge model CK\*B-\*\*\* shows performance curves, technical tips, and options.  
See page vii for technical information about line mount bodies including SAE flange pattern specifications.  
Consult your local Sun Distributor or the Sun Web Site for other port sizes available in the bodies shown above.  
Model Codes printed in red are Preferred Products and are readily available.

## Line Mounted Assemblies

# THREE PORT PILOT-TO-OPEN CHECK APPLICATIONS (90 DEGREE CROSS-PILOTED BODIES, 2 CAVITIES)

### PILOT OPERATED ASSEMBLIES

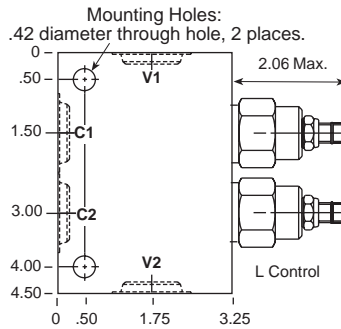
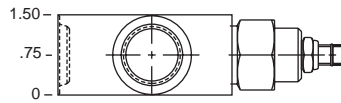
Go to [www.sunhydraulics.com](http://www.sunhydraulics.com)  
for more product information and pricing.



Ports C1, C2, V1 & V2	Assembly Model Code*
1/2" NPTF	<b>CKEB-XCN-YAC</b>
3/4" NPTF	<b>CKEB-XCN-YAD</b>
SAE-8	<b>CKEB-XCN-YAJ</b>
<b>SAE-10</b>	<b>CKEB-XCN-YAK</b>

\*Add modifier **/S** to order Ductile Iron for pressure rating over 3000 psi.

### 0-30 GPM Cavity T-2A

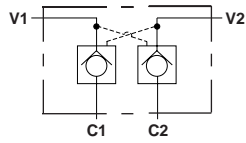


NOTES: Page 78 for cartridge model CK\*B-\*\*\* shows performance curves, technical tips, and options.  
See page vii for technical information about line mount bodies including SAE flange pattern specifications.  
Consult your local Sun Distributor or the Sun Web Site for other port sizes available in the bodies shown above.  
**Model Codes printed in red are Preferred Products and are readily available.**

**THREE PORT PILOT-TO-OPEN CHECK APPLICATIONS  
(90 DEGREE CROSS-PILOTED BODIES, 2 CAVITIES)**

**PILOT OPERATED  
ASSEMBLIES**

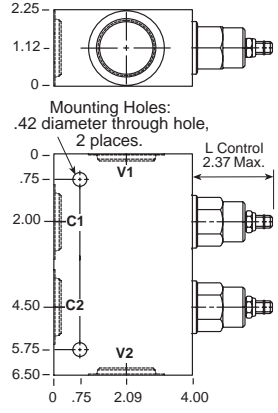
Go to [www.sunhydraulics.com](http://www.sunhydraulics.com)  
for more product information and pricing.



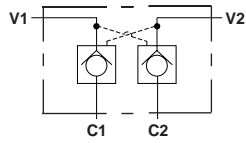
Ports C1, C2, V1 & V2	Assembly Model Code*
1" NPTF	<b>CKGB-XCN-YJE</b>
1 1/4" NPTF	<b>CKGB-XCN-YJF</b>
SAE-12	<b>CKGB-XCN-YJL</b>
SAE-16	<b>CKGB-XCN-YJM</b>

\*Add modifier /S to order Ductile Iron for pressure rating over 3000 psi.

**0-60 GPM Cavity T-17A**

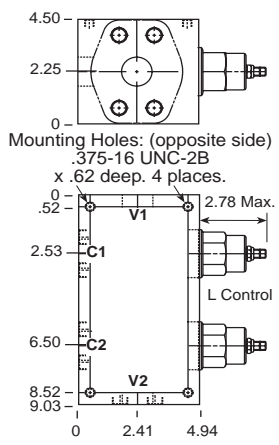


**0-120 GPM Cavity T-19A**



Ports C1, C2, V1 & V2	Assembly Model Code*
1 1/2" SAE C62	<b>CKIB-XCN-YM6</b>

\*Add modifier /S to order Ductile Iron for pressure rating over 3000 psi.



NOTES: Page 78 for cartridge model CK\*B-\*\*\* shows performance curves, technical tips, and options.  
See page vii for technical information about line mount bodies including SAE flange pattern specifications.  
Consult your local Sun Distributor or the Sun Web Site for other port sizes available in the bodies shown above.  
Model Codes printed in red are Preferred Products and are readily available.

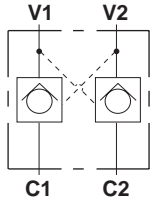


## Line Mounted Assemblies

# THREE PORT PILOT-TO-OPEN CHECK APPLICATIONS (INLINE CROSS-PILOTED BODIES, 2 CAVITIES)

### PILOT OPERATED ASSEMBLIES

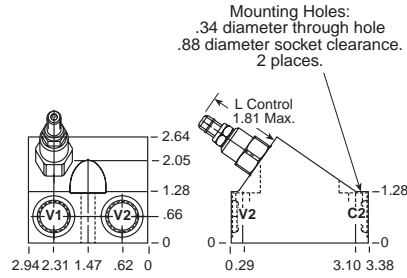
Go to [www.sunhydraulics.com](http://www.sunhydraulics.com)  
for more product information and pricing.



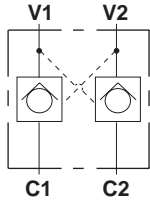
**0-15 GPM**

**Cavity T-11A**

Ports C1, C2, V1 & V2	Assembly Model Code*
3/8" NPTF	<b>CKCB-XCN-XEB</b>
SAE-6	<b>CKCB-XCN-XEI</b>
SAE-8	<b>CKCB-XCN-XEJ</b>



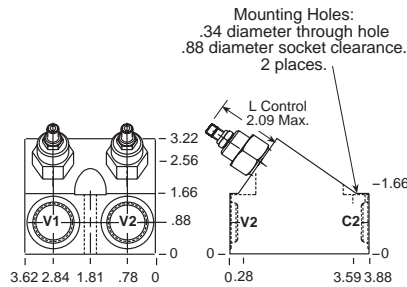
\*Add modifier **/S** to order Ductile Iron for pressure rating over 3000 psi.



**0-30 GPM**

**Cavity T-2A**

Ports C1, C2, V1 & V2	Assembly Model Code*
1/2" NPTF	<b>CKEB-XCN-XAC</b>
3/4" NPTF	<b>CKEB-XCN-XAD</b>
SAE-6	<b>CKEB-XCN-XAI</b>
SAE-8	<b>CKEB-XCN-XAJ</b>



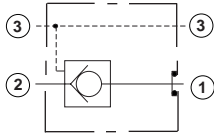
\*Add modifier **/S** to order Ductile Iron for pressure rating over 3000 psi.

NOTES: Page 78 for cartridge model CK\*B-\*\*\* shows performance curves, technical tips, and options.  
See page vii for technical information about line mount bodies including SAE flange pattern specifications.  
Consult your local Sun Distributor or the Sun Web Site for other port sizes available in the bodies shown above.  
Model Codes printed in red are Preferred Products and are readily available.

**THREE PORT PILOT-TO-OPEN CHECK APPLICATIONS  
(DIRECT MOUNT .75"/1.00"/1.25" SAE C61 FLANGE PORT/GASKET MOUNT BODIES,  
THROUGH PILOT PORT)**

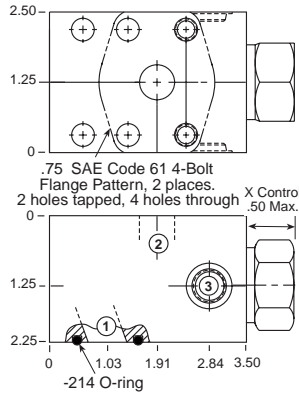
**PILOT OPERATED  
ASSEMBLIES**

Go to [www.sunhydraulics.com](http://www.sunhydraulics.com) for more product information and pricing.



**0-30 GPM Cavity T-2A**

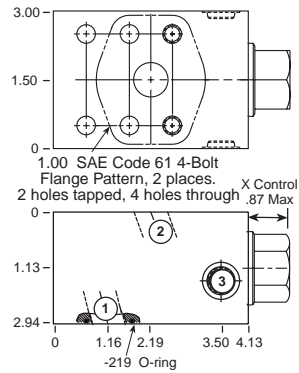
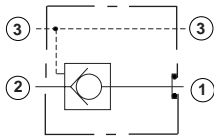
Ports 1 and 2	Port 3	Assembly Model Code*
3/4" SAE C61	SAE-6	<b>CKEB-XCN-ZNV</b>



\*Add modifier /S to order Ductile Iron for pressure rating over 3000 psi.

**0-60 GPM Cavity T-17A**

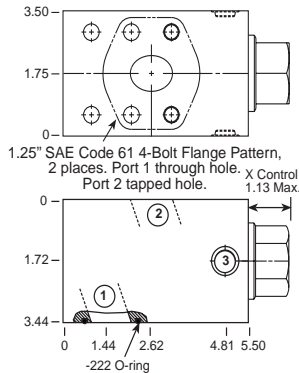
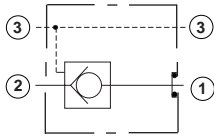
Ports 1 and 2	Port 3	Assembly Model Code*
1" SAE C61	SAE-6	<b>CKGB-XCN-ZNW</b>



\*Add modifier /S to order Ductile Iron for pressure rating over 3000 psi.

**0-120 GPM Cavity T-19A**

Ports 1 and 2	Port 3	Assembly Model Code*
1 1/4" SAE C61	SAE-6	<b>CKIB-XCN-ZNX</b>



\*Add modifier /S to order Ductile Iron for pressure rating over 3000 psi.

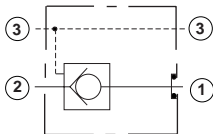
NOTES: Page 78 for cartridge model CK\*B-\*\*\* shows performance curves, technical tips, and options.  
See page vii for technical information about line mount bodies including SAE flange pattern specifications.  
Consult your local Sun Distributor or the Sun Web Site for other port sizes available in the bodies shown above.

## Line Mounted Assemblies

# THREE PORT PILOT-TO-OPEN CHECK APPLICATIONS (DIRECT MOUNT .75"/1.00"/1.25" C62 FLANGE PORT/GASKET MOUNT BODIES, THROUGH PILOT/DRAIN PORT)

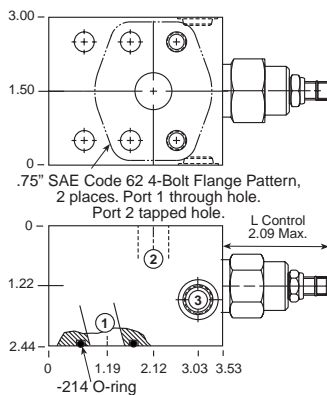
### PILOT OPERATED ASSEMBLIES

Go to [www.sunhydraulics.com](http://www.sunhydraulics.com)  
for more product information and pricing.

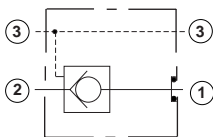


Ports 1 and 2	Port 3	Assembly Model Code*
3/4" SAE C62	SAE-6	<b>CKEB-XCN-ZDS</b>

### 0-30 GPM Cavity T-2A

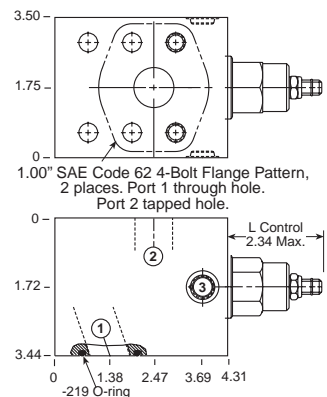


\*Add modifier /S to order Ductile Iron for pressure rating  
over 3000 psi.

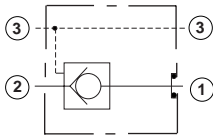


Ports 1 and 2	Port 3	Assembly Model Code*
1" SAE C62	SAE-6	<b>CKGB-XCN-ZDR</b>

### 0-60 GPM Cavity T-17A

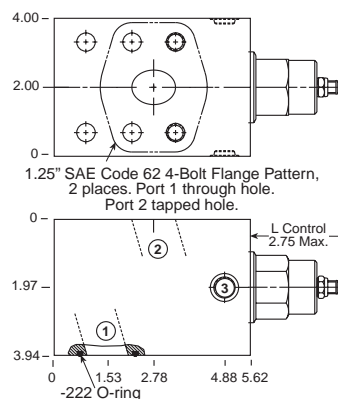


\*Add modifier /S to order Ductile Iron for pressure rating  
over 3000 psi.



Ports 1 and 2	Port 3	Assembly Model Code*
1 1/4" SAE C62	SAE-6	<b>CKIB-XCN-ZFD</b>

### 0-120 GPM Cavity T-19A



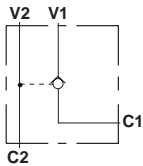
\*Add modifier /S to order Ductile Iron for pressure rating  
over 3000 psi.

NOTES: Page 78 for cartridge model CK\*B-\*\*\* shows performance curves, technical tips, and options.  
See page vii for technical information about line mount bodies including SAE flange pattern specifications.  
Consult your local Sun Distributor or the Sun Web Site for other port sizes available in the bodies shown above.

# THREE PORT PILOT-TO-OPEN CHECK APPLICATIONS (GASKET MOUNT BODIES)

## PILOT OPERATED ASSEMBLIES

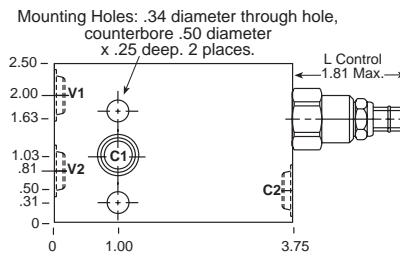
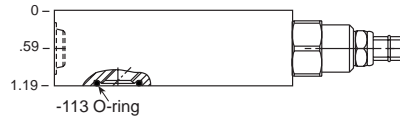
Go to [www.sunhydraulics.com](http://www.sunhydraulics.com) for more product information and pricing.



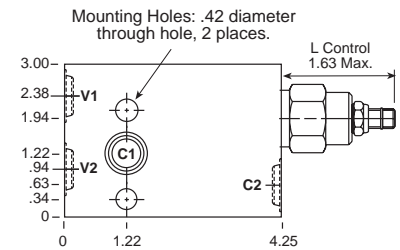
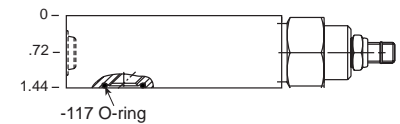
Ports C1, C2, V1 & V2	Assembly Model Code*
3/8" NPTF	<b>CKCB-XCN-ZTN</b>
SAE-6	<b>CKCB-XCN-ZTC</b>

\*Add modifier /S to order Ductile Iron for pressure rating over 3000 psi.

### 0-15 GPM Cavity T-11A



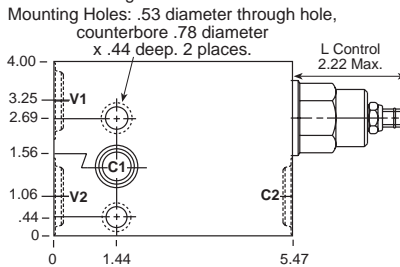
### 0-30 GPM Cavity T-2A



Ports C1, C2, V1 & V2	Assembly Model Code*
1/2" NPTF	<b>CKEB-XCN-ZTF</b>
SAE-8	<b>CKEB-XCN-ZTG</b>

\*Add modifier /S to order Ductile Iron for pressure rating over 3000 psi.

### 0-60 GPM Cavity T-17A



Ports C1, C2, V1 & V2	Assembly Model Code*
3/4" NPTF	<b>CKGB-XCN-ZTJ</b>
SAE-12	<b>CKGB-XCN-ZTK</b>

\*Add modifier /S to order Ductile Iron for pressure rating over 3000 psi.

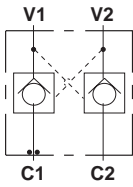
NOTES: Page 78 for cartridge model CK\*B-\*\*\* shows performance curves, technical tips, a7nd options.  
See page vii for technical information about line mount bodies including SAE flange pattern specifications.  
Consult your local Sun Distributor or the Sun Web Site for other port sizes available in the bodies shown above.  
Model Codes printed in red are Preferred Products and are readily available.

## Line Mounted Assemblies

# THREE PORT PILOT-TO-OPEN CHECK APPLICATIONS (GASKET MOUNT BODIES, 2 CAVITIES)

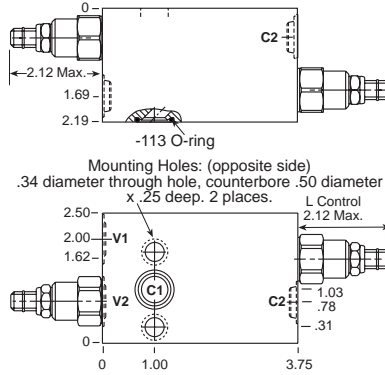
### PILOT OPERATED ASSEMBLIES

Go to [www.sunhydraulics.com](http://www.sunhydraulics.com)  
for more product information.

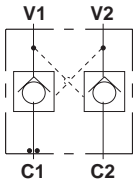


Ports C2, V1 & V2	Assembly Model Code*
3/8" NPTF	<b>CKCB-XCN-YVM</b>
SAE-6	<b>CKCB-XCN-YVY</b>

### 0-15 GPM Cavity T-11A

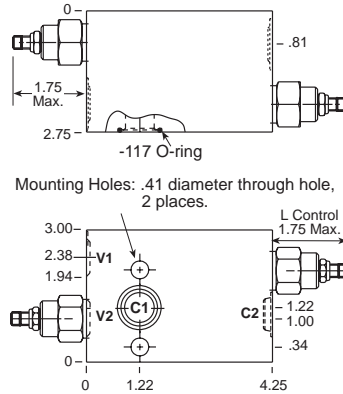


\*Add modifier /S to order SG Iron for pressure rating over .

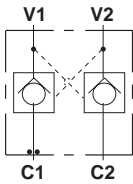


Ports C2, V1 & V2	Assembly Model Code*
1/2" NPTF	<b>CKEB-XCN-YVW</b>
SAE-8	<b>CKEB-XCN-YVY</b>

### 0-30 GPM Cavity T-2A

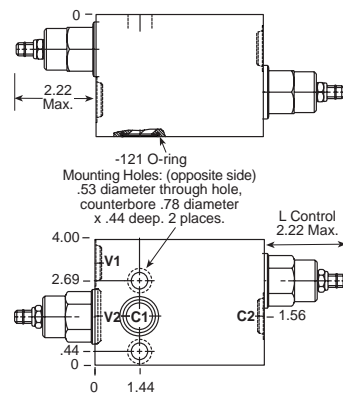


\*Add modifier /S to order SG Iron for pressure rating over .



Ports C2, V1 & V2	Assembly Model Code*
3/4" NPTF	<b>CKEB-XCN-YVT</b>
SAE-12	<b>CKEB-XCN-YVS</b>

### 0-60 GPM Cavity T-17A



\*Add modifier /S to order SG Iron for pressure rating over .

NOTES: Page 78 for cartridge model CK\*B-\*\*\* shows performance curves, technical tips, and options.  
See page vii for technical information about line mount bodies including SAE flange pattern specifications.  
Consult your local Sun Distributor or the Sun Web Site for other port sizes available in the bodies shown above.