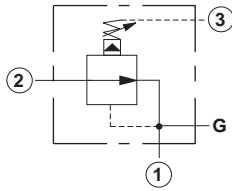


Line Mounted Assemblies

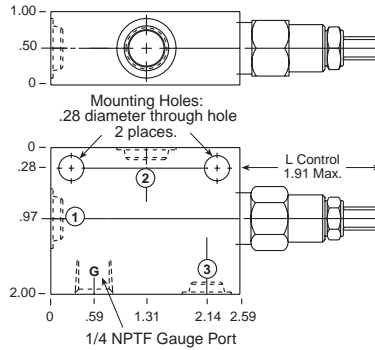
THREE PORT PRESSURE REDUCING APPLICATIONS (90 DEGREE BODIES)

PILOT OPERATED ASSEMBLIES

Go to www.sunhydraulics.com
for more product information and pricing.

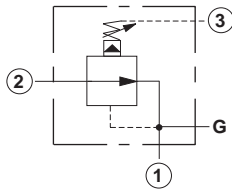


0-5 GPM Cavity T-163A

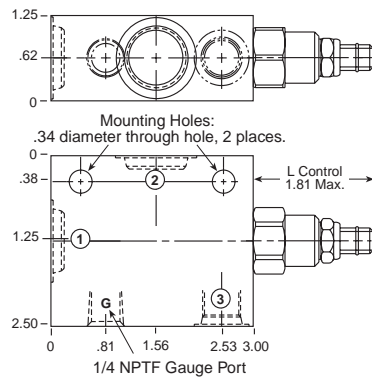


Ports 1 and 2	Port 3	Assembly Model Code*
3/8" NPTF	1/4" NPTF	PBBB-LAN-JFB
SAE-4	SAE-4	PBBB-LAN-JFH
SAE-6	SAE-4	PBBB-LAN-JFI

*Add modifier /S to order Ductile Iron for pressure rating over 3000 psi.

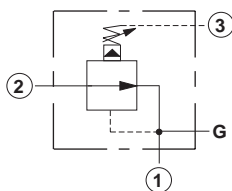


0-10 GPM Cavity T-11A

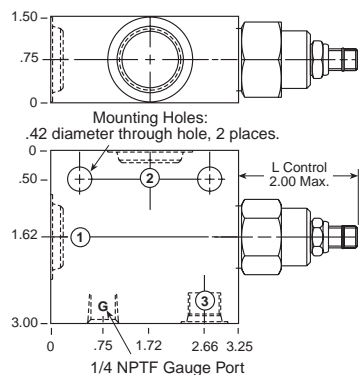


Ports 1 and 2	Port 3	Assembly Model Code*
3/8" NPTF	1/4" NPTF	PBDB-LAN-EFB
1/2" NPTF	1/4" NPTF	PBDB-LAN-EFC
SAE-4	SAE-4	PBDB-LAN-EFH
SAE-6	SAE-6	PBDB-LAN-EFI
SAE-8	SAE-6	PBDB-LAN-EFJ

*Add modifier /S to order Ductile Iron for pressure rating over 3000 psi.



0-20 GPM Cavity T-2A



Ports 1 and 2	Port 3	Assembly Model Code*
1/2" NPTF	1/4" NPTF	PBFB-LAN-BFC
3/4" NPTF	1/4" NPTF	PBFB-LAN-BFD
SAE-10	SAE-6	PBFB-LAN-BFK
SAE-12	SAE-6	PBFB-LAN-BFL

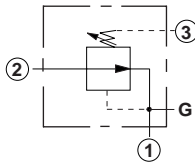
*Add modifier /S to order Ductile Iron for pressure rating over 3000 psi.

NOTES: Page 34 for cartridge model PB*B-*** shows performance curves, technical tips, and options.
See page vii for technical information about line mount bodies including SAE flange pattern specifications.
Consult your local Sun Distributor or the Sun Web Site for other port sizes available in the bodies shown above.
Model Codes printed in red are Preferred Products and are readily available.

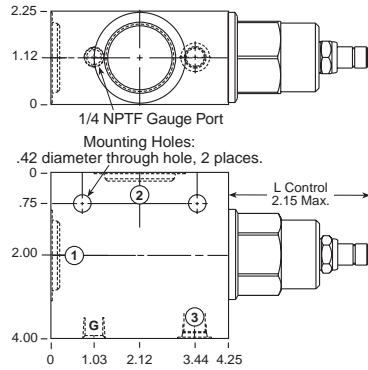
THREE PORT PRESSURE REDUCING APPLICATIONS (90 DEGREE BODIES)

PILOT OPERATED ASSEMBLIES

Go to www.sunhydraulics.com for more product information and pricing.



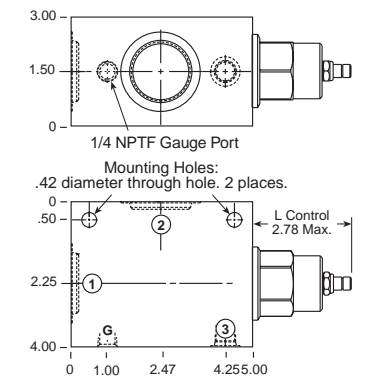
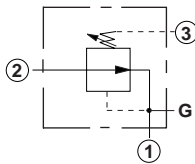
0-40 GPM Cavity T-17A



Ports 1 and 2	Port 3	Assembly Model Code*
1" NPTF	1/4" NPTF	PBHB-LAN-HFE
1 1/4" NPTF	1/4" NPTF	PBHB-LAN-HFF
SAE-12	SAE-6	PBHB-LAN-HFL
SAE-16	SAE-6	PBHB-LAN-HFM

*Add modifier /S to order Ductile Iron for pressure rating over 3000 psi.

0-80 GPM Cavity T-19A



Ports 1 and 2	Port 3	Assembly Model Code*
1" NPTF	1/4" NPTF	PBJB-LAN-KFE
1 1/4" NPTF	1/4" NPTF	PBJB-LAN-KFF

*Add modifier /S to order Ductile Iron for pressure rating over 3000 psi.

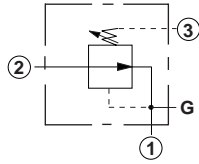
NOTES: Page 34 for cartridge model PB*B-*** shows performance curves, technical tips, and options.
See page vii for technical information about line mount bodies including SAE flange pattern specifications.
Consult your local Sun Distributor or the Sun Web Site for other port sizes available in the bodies shown above.
Model Codes printed in red are Preferred Products and are readily available.

Line Mounted Assemblies

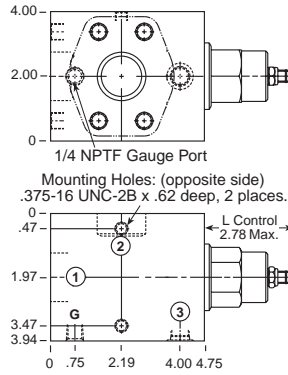
THREE PORT PRESSURE REDUCING APPLICATIONS (90 DEGREE, 1.50" SAE C61/C62 FLANGE PORT BODIES)

PILOT OPERATED ASSEMBLIES

Go to www.sunhydraulics.com
for more product information and pricing.

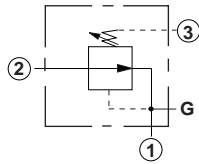


0-80 GPM Cavity T-19A

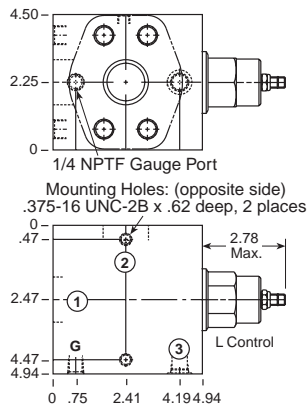


Ports 1 and 2	Port 3	Assembly Model Code*
1 1/2" SAE C61	SAE-6	PBJB-LAN-KFR

*Add modifier **/S** to order Ductile Iron for pressure rating over 3000 psi.



0-80 GPM Cavity T-19A



Ports 1 and 2	Port 3	Assembly Model Code*
1 1/2" SAE C62	SAE-6	PBJB-LAN-KF6

*Add modifier **/S** to order Ductile Iron for pressure rating over 3000 psi.

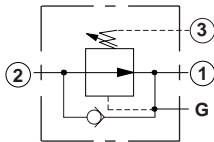
NOTES: Page 34 for cartridge model PB*B-*** shows performance curves, technical tips, and options.
See page vii for technical information about line mount bodies including SAE flange pattern specifications.
Consult your local Sun Distributor or the Sun Web Site for other port sizes available in the bodies shown above.

THREE PORT PRESSURE REDUCING APPLICATIONS (BODIES WITH REVERSE FREE FLOW CHECK)

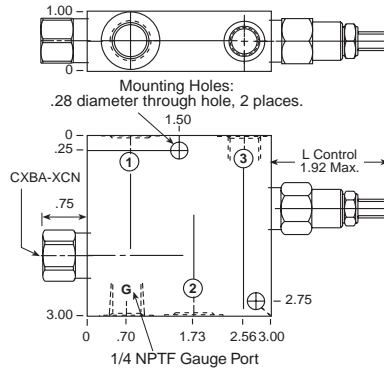
PILOT OPERATED ASSEMBLIES

Go to www.sunhydraulics.com for more product information and pricing.

0-5 GPM Cavity T-163A

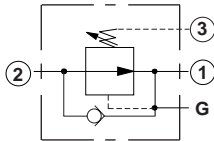


Ports 1 and 2	Port 3	Assembly Model Code*
1/4" NPTF	1/4" NPTF	PBBB-LAN-J2A
3/8" NPTF	1/4" NPTF	PBBB-LAN-J2B
SAE-4	SAE-4	PBBB-LAN-J2H
SAE-6	SAE-4	PBBB-LAN-J2I

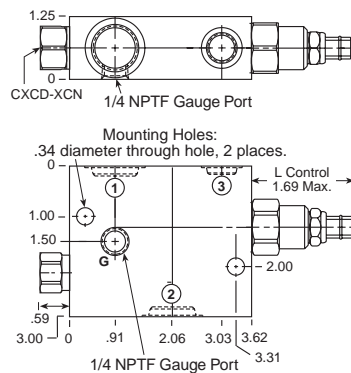


*Add modifier /S to order Ductile Iron for pressure rating over 3000 psi.

0-10 GPM Cavity T-11A

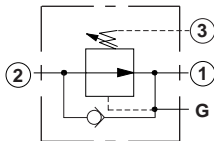


Ports 1 and 2	Port 3	Assembly Model Code*
3/8" NPTF	1/4" NPTF	PBDB-LAN-E6B
1/2" NPTF	1/4" NPTF	PBDB-LAN-E6C
SAE-6	SAE-4	PBDB-LAN-E6I
SAE-8	SAE-6	PBDB-LAN-E6J

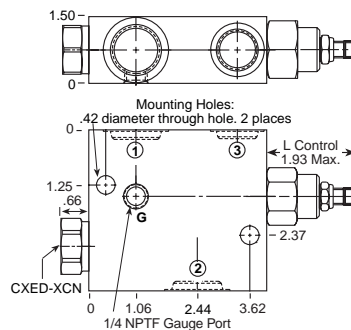


*Add modifier /S to order Ductile Iron for pressure rating over 3000 psi.

0-20 GPM Cavity T-2A



Ports 1 and 2	Port 3	Assembly Model Code*
3/8" NPTF	1/4" NPTF	PBFB-LAN-B6B
1/2" NPTF	1/4" NPTF	PBFB-LAN-B6C
3/4" NPTF	1/4" NPTF	PBFB-LAN-B6D
SAE-6	SAE-6	PBFB-LAN-B6I
SAE-8	SAE-6	PBFB-LAN-B6J



*Add modifier /S to order Ductile Iron for pressure rating over 3000 psi.

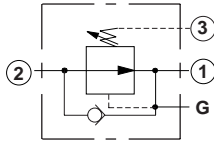
NOTES: Page 34 for cartridge model PB*B-*** shows performance curves, technical tips, and options.
See page vii for technical information about line mount bodies including SAE flange pattern specifications.
Consult your local Sun Distributor or the Sun Web Site for other port sizes available in the bodies shown above.

Line Mounted Assemblies

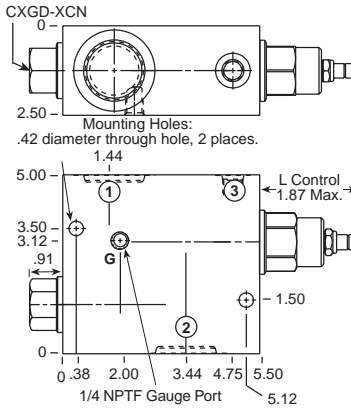
THREE PORT PRESSURE REDUCING APPLICATIONS (BODIES WITH REVERSE FREE FLOW CHECK)

PILOT OPERATED ASSEMBLIES

Go to www.sunhydraulics.com
for more product information and pricing.



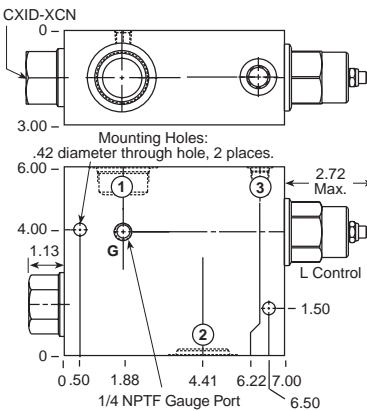
0-40 GPM Cavity T-17A



Ports 1 and 2	Port 3	Assembly Model Code*
1" NPTF	1/4" NPTF	PBHB-LAN-H2*
1 1/4" NPTF	1/4" NPTF	PBHB-LAN-H2*
SAE-12	SAE-6	PBHB-LAN-H2*
SAE-16	SAE-6	PBHB-LAN-H2*

*Add modifier /S to order Ductile Iron for pressure rating over 3000 psi.

0-80 GPM Cavity T-19A



Ports 1 and 2	Port 3	Assembly Model Code*
1" NPTF	1/4" NPTF	PBJB-LAN-KK2*
1 1/4" NPTF	1/4" NPTF	PBJB-LAN-KK2*

*Add modifier /S to order Ductile Iron for pressure rating over 3000 psi.

NOTES: Page 34 for cartridge model PB*B shows performance curves, technical tips, and options.
See page vii for technical information about line mount bodies including SAE flange pattern specifications.
Consult your local Sun Distributor or the Sun Web Site for other port sizes available in the bodies shown above.