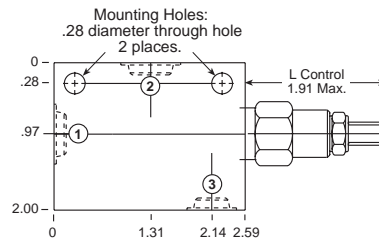
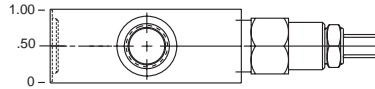
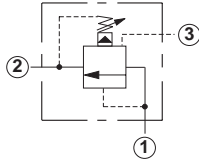


Line Mounted Assemblies

THREE PORT PRESSURE REGULATING RELIEF APPLICATIONS
(90 DEGREE BODIES)PILOT OPERATED
ASSEMBLIESGo to www.sunhydraulics.com
for more product information and pricing.

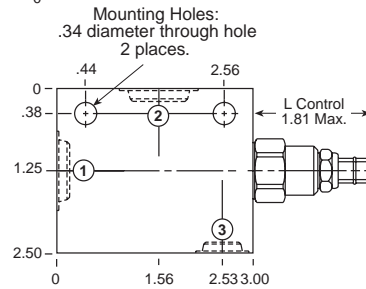
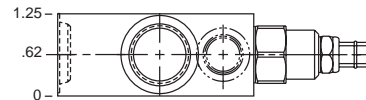
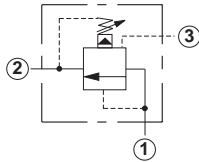
0-7.5 GPM Cavity T-163A



Ports 1 and 2	Port 3	Assembly Model Code*
1/4" NPTF	1/4" NPTF	RVBA-LAN-JCA
3/8" NPTF	1/4" NPTF	RVBA-LAN-JCB
SAE-4	SAE-4	RVBA-LAN-JCH
SAE-6	SAE-4	RVBA-LAN-JCI

*Add modifier /S to order Ductile Iron for pressure rating over 3000 psi.

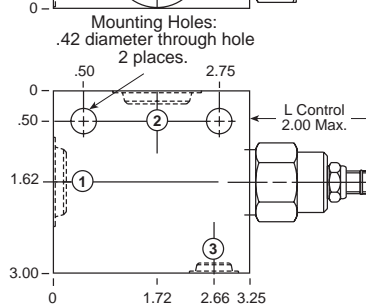
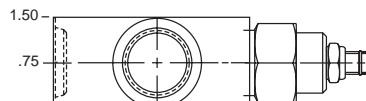
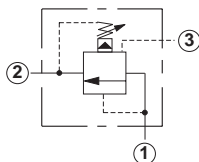
0-15 GPM Cavity T-11A



Ports 1 and 2	Port 3	Assembly Model Code*
3/8" NPTF	1/4" NPTF	RVCA-LAN-ECB
1/2" NPTF	1/4" NPTF	RVCA-LAN-ECC
SAE-4	SAE-4	RVCA-LAN-ECH
SAE-6	SAE-6	RVCA-LAN-ECI
SAE-8	SAE-6	RVCA-LAN-ECJ

*Add modifier /S to order Ductile Iron for pressure rating over 3000 psi.

0-30 GPM Cavity T-2A



Ports 1 and 2	Port 3	Assembly Model Code*
1/2" NPTF	1/4" NPTF	RVEA-LAN-BCC
3/4" NPTF	1/4" NPTF	RVEA-LAN-BCD
SAE-6	SAE-6	RVEA-LAN-BCI
SAE-8	SAE-6	RVEA-LAN-BCJ

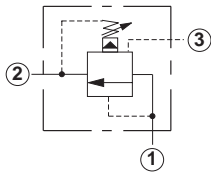
*Add modifier /S to order Ductile Iron for pressure rating over 3000 psi.

NOTES: Page 12 for cartridge model RV*A-*** shows performance curves, technical tips, and options.
See page vii for technical information about line mount bodies including SAE flange pattern specifications.
Consult your local Sun Distributor or the Sun Web Site for other port sizes available in the bodies shown above.
Model Codes printed in red are Preferred Products and are readily available.

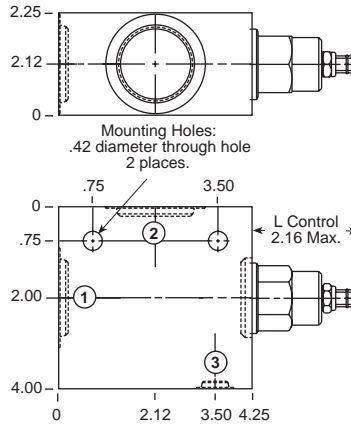
THREE PORT PRESSURE REGULATING RELIEF APPLICATIONS (90 DEGREE/90 DEGREE 1.50" SAE C62 FLANGE PORT BODIES)

PILOT OPERATED ASSEMBLIES

Go to www.sunhydraulics.com for more product information and pricing.

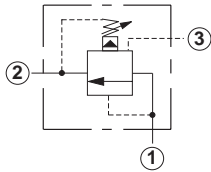


0-60 GPM Cavity T-17A

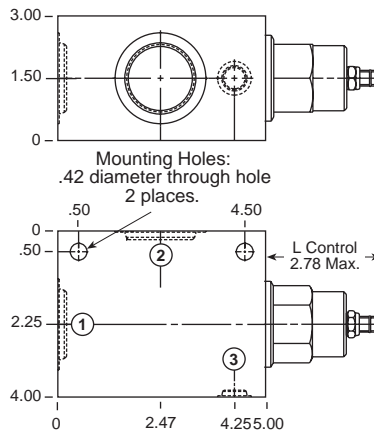


Ports 1 and 2	Port 3	Assembly Model Code*
3/4" NPTF	1/4" NPTF	RVGA-LAN-HCD
1" NPTF	1/4" NPTF	RVGA-LAN-HCE
1 1/4" NPTF	1/4" NPTF	RVGA-LAN-HCF
SAE-12	SAE-6	RVGA-LAN-HCL
SAE-16	SAE-6	RVGA-LAN-HCM

*Add modifier /S to order Ductile Iron for pressure rating over 3000 psi.

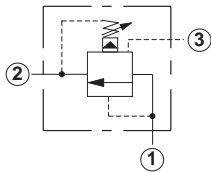


0-120 GPM Cavity T-19A

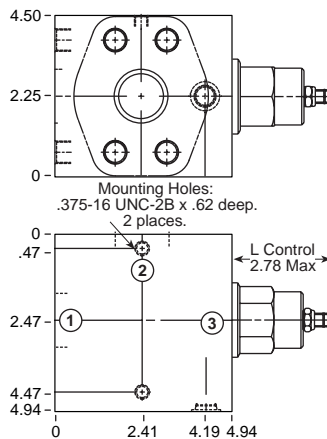


Ports 1 and 2	Port 3	Assembly Model Code*
1" NPTF	1/4" NPTF	RVIA-LAN-KCE
1 1/4" NPTF	1/4" NPTF	RVIA-LAN-KCF
SAE-20	SAE-6	RVIA-LAN-KCN

*Add modifier /S to order Ductile Iron for pressure rating over 3000 psi.



0-120 GPM Cavity T-19A



Ports 1 and 2	Port 3	Assembly Model Code*
1 1/2" SAE C62	SAE-6	RVIA-LAN-KC6

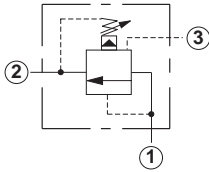
*Add modifier /S to order Ductile Iron for pressure rating over 3000 psi.

NOTES: Page 12 for cartridge model RV*A-*** shows performance curves, technical tips, and options.
See page vii for technical information about line mount bodies including SAE flange pattern specifications.
Consult your local Sun Distributor or the Sun Web Site for other port sizes available in the bodies shown above.
Model Codes printed in red are Preferred Products and are readily available.

Line Mounted Assemblies

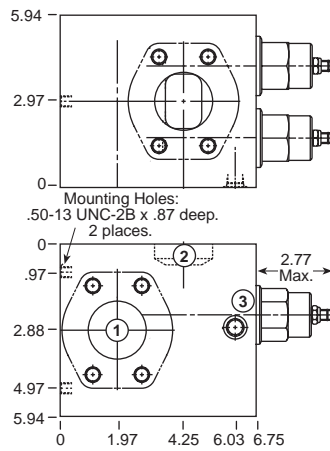
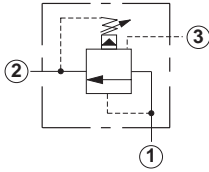
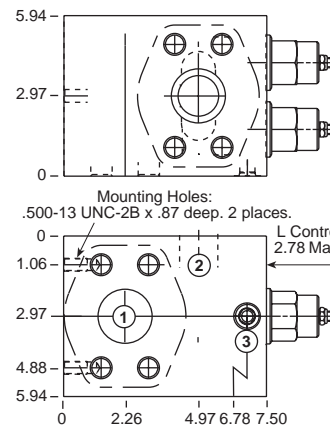
THREE PORT PRESSURE REGULATING RELIEF APPLICATIONS (90 DEGREE 2.00" SAE C61/C62 FLANGE PORT BODIES, 2 CAVITIES)

**PILOT OPERATED
ASSEMBLIES**

 Go to www.sunhydraulics.com
for more product information and pricing.


Ports 1 and 2	Port 3	Assembly Model Code*
2" SAE C61	SAE-6	RVIA-LAN-XZZ

*Add modifier /S to order Ductile Iron for pressure rating over 3000 psi.

0-240 GPM Cavity T-19A

0-240 GPM Cavity T-19A


Ports 1 and 2	Port 3	Assembly Model Code*
2" SAE C62	SAE-6	RVIA-LAN-Z8Z

*Add modifier /S to order Ductile Iron for pressure rating over 3000 psi.

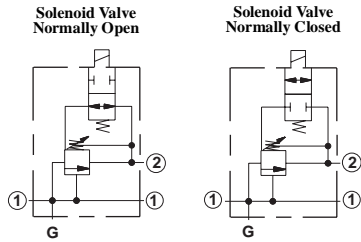
NOTES: Page 12 for cartridge model RV*A-*** shows performance curves, technical tips, and options.
See page vii for technical information about line mount bodies including SAE flange pattern specifications.
Consult your local Sun Distributor or the Sun Web Site for other port sizes available in the bodies shown above.

THREE PORT PRESSURE REGULATING RELIEF APPLICATIONS (SOLENOID OPERATED BODIES WITH VENTED RELIEF)

PILOT OPERATED ASSEMBLIES

Suitable for operation
up to 5000 psi

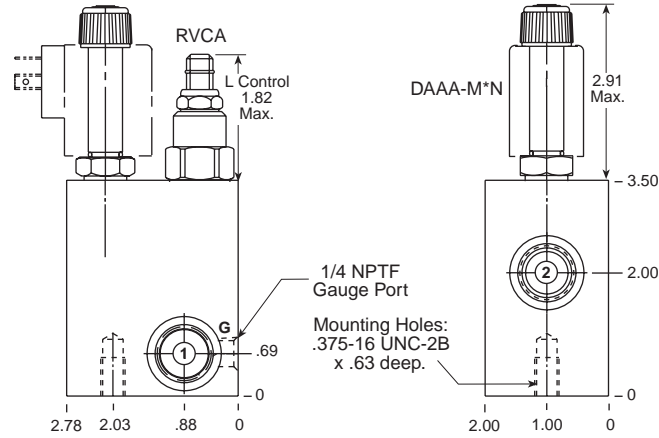
Go to www.sunhydraulics.com
for more product information and pricing.



Ports 1 and 2	Assembly Model Code*
1/4" NPTF	XRCA-LAN-A
3/8" NPTF	XRCA-LAN-B
1/2" NPTF	XRCA-LAN-C
SAE-6	XRCA-LAN-I
SAE-8	XRCA-LAN-J

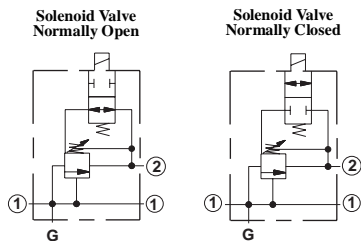
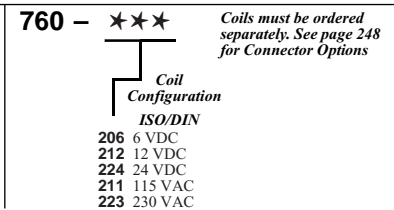
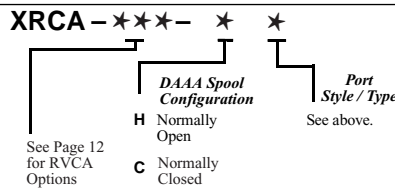
*Add modifier **/S** to order Ductile Iron for pressure rating over 3000 psi.

0-15 GPM Cavity T-11A



Assembly Order:

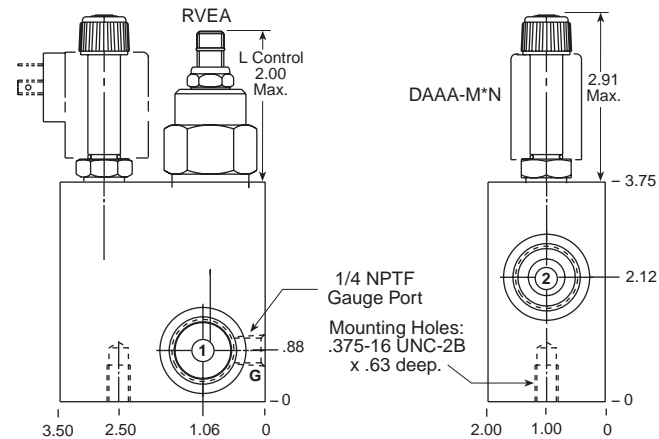
Solenoid Coil Order:



Ports 1 and 2	Assembly Model Code*
1/4" NPTF	XREA-LAN-A
3/8" NPTF	XREA-LAN-B
1/2" NPTF	XREA-LAN-C
3/4" NPTF	XREA-LAN-D
SAE-8	XREA-LAN-J
SAE-12	XREA-LAN-L

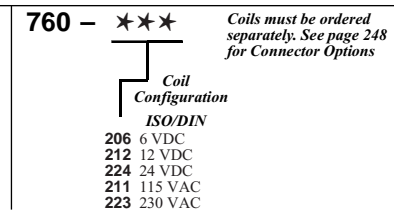
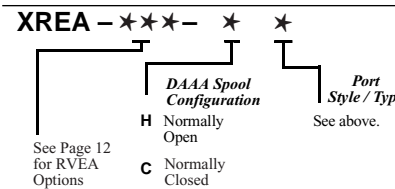
*Add modifier **/S** to order Ductile Iron for pressure rating over 3000 psi.

0-30 GPM Cavity T-2A



Assembly Order:

Solenoid Coil Order:



NOTES: Page 12 for cartridge model RV*A-*** shows performance curves, technical tips, and options.
See page vii for technical information about line mount bodies including SAE flange pattern specifications.
Consult your local Sun Distributor or the Sun Web Site for other port sizes available in the bodies shown above.
Model Codes printed in red are Preferred Products and are readily available.

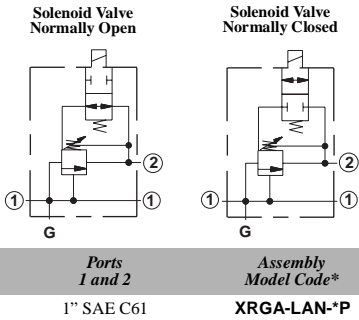
Line Mounted Assemblies

THREE PORT PRESSURE REGULATING RELIEF APPLICATIONS (SOLENOID OPERATED, FLANGE MOUNTED BODIES WITH VENTED RELIEF)

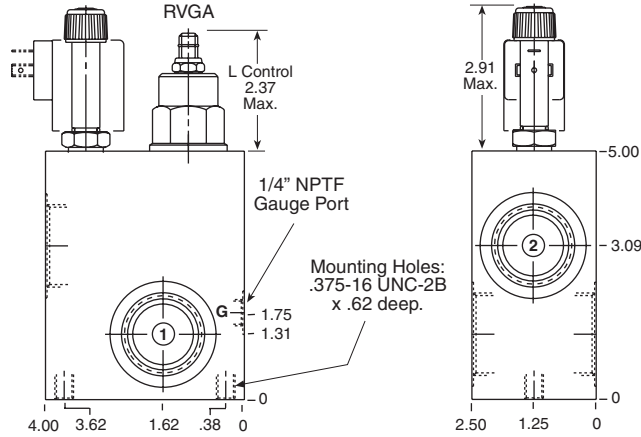
PILOT OPERATED ASSEMBLIES

Suitable for operation
up to 5000 psi

Go to www.sunhydraulics.com
for more product information and pricing.

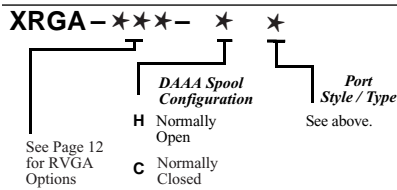


0-60 GPM Cavity T-17A

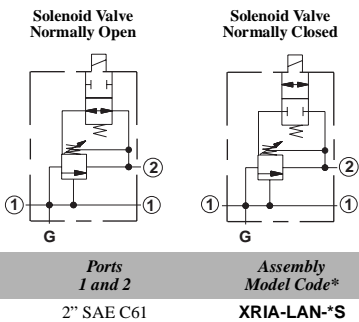
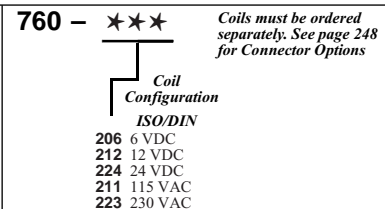


*Add modifier /S to order Ductile Iron for pressure rating over 3000 psi.

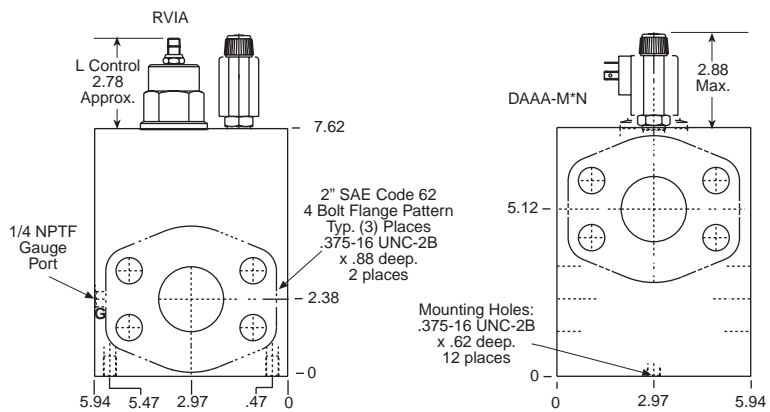
Assembly Order:



Solenoid Coil Order:

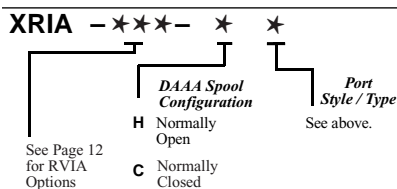


0-120 GPM Cavity T-19A

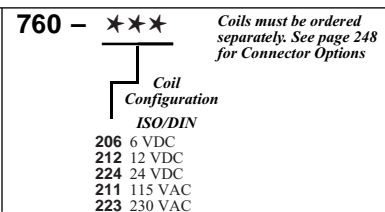


*Add modifier /S to order Ductile Iron for pressure rating over 3000 psi.

Assembly Order:



Solenoid Coil Order:



NOTES: Page 12 for cartridge model RV*A-*** shows performance curves, technical tips, and options.
See page vii for technical information about line mount bodies including SAE flange pattern specifications.
Consult your local Sun Distributor or the Sun Web Site for other port sizes available in the bodies shown above.