

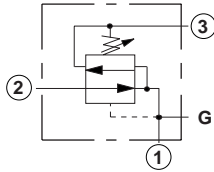
Line Mounted Assemblies

THREE PORT PRESSURE REDUCING/RELIEVING APPLICATIONS (90 DEGREE, HIGH CAPACITY PORT 3 BODIES)

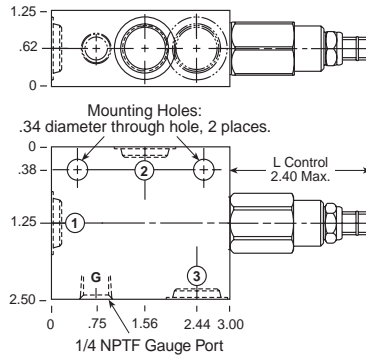
PILOT OPERATED ASSEMBLIES

Go to www.sunhydraulics.com for more product information and pricing.

DIRECT ACTING ASSEMBLIES



0-10 GPM Cavity T-11A

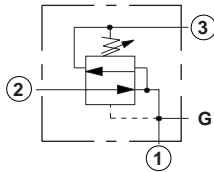


Ports 1 and 2	Port 3	Assembly Model Code*
3/8" NPTF	3/8" NPTF	PPDB-LAN-ELB
1/2" NPTF	3/8" NPTF	PPDB-LAN-ELC
SAE-6	SAE-6	PPDB-LAN-ELI
SAE-8	SAE-8	PPDB-LAN-ELJ
SAE-10	SAE-8	PPDB-LAN-ELK

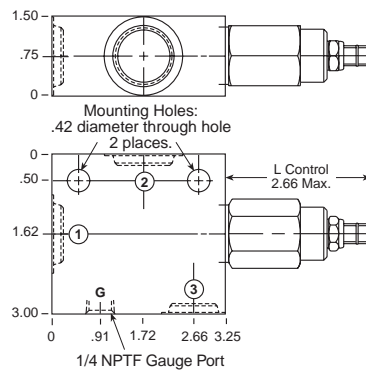
*Add modifier /S to order Ductile Iron for pressure rating over 3000 psi.

Ports 1 and 2	Port 3	Assembly Model Code*
3/8" NPTF	3/8" NPTF	PRDB-LAN-ELB
1/2" NPTF	3/8" NPTF	PRDB-LAN-ELC
SAE-6	SAE-6	PRDB-LAN-ELI
SAE-8	SAE-8	PRDB-LAN-ELJ
SAE-10	SAE-8	PRDB-LAN-ELK

*Add modifier /S to order Ductile Iron for pressure rating over 3000 psi.



0-20 GPM Cavity T-2A



Ports 1 and 2	Port 3	Assembly Model Code*
1/2" NPTF	1/2" NPTF	PPFB-LAN-BLC
3/4" NPTF	1/2" NPTF	PPFB-LAN-BLD
SAE-6	SAE-6	PPFB-LAN-BLI
SAE-8	SAE-8	PPFB-LAN-BLJ
SAE-10	SAE-10	PPFB-LAN-BLK

*Add modifier /S to order Ductile Iron for pressure rating over 3000 psi.

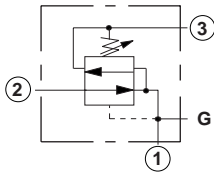
Ports 1 and 2	Port 3	Assembly Model Code*
1/2" NPTF	1/2" NPTF	PRFB-LAN-BLC
3/4" NPTF	1/2" NPTF	PRFB-LAN-BLD
SAE-6	SAE-6	PRFB-LAN-BLI
SAE-8	SAE-8	PRFB-LAN-BLJ
SAE-10	SAE-10	PRFB-LAN-BLK

*Add modifier /S to order Ductile Iron for pressure rating over 3000 psi.

NOTES: Page 42 for cartridge models PP*B-*** and PR*B-*** shows performance curves, technical tips, and options. See page vii for technical information about line mount bodies including SAE flange pattern specifications. Consult your local Sun Distributor or the Sun Web Site for other port sizes available in the bodies shown above. Model Codes printed in red are Preferred Products and are readily available.

THREE PORT PRESSURE REDUCING/RELIEVING APPLICATIONS (90 DEGREE, HIGH CAPACITY PORT 3 BODIES)

PILOT OPERATED ASSEMBLIES



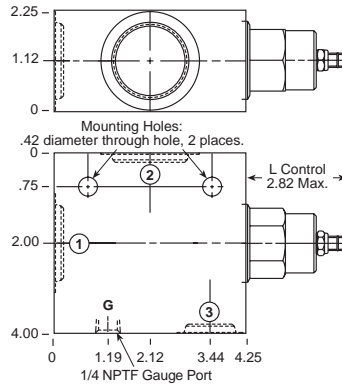
Ports 1 and 2	Port 3	Assembly Model Code*
1" NPTF	3/4" NPTF	PPHB-LAN-HEE
1 1/4" NPTF	3/4" NPTF	PPHB-LAN-HEF
SAE-12	SAE-12	PPHB-LAN-HEL
SAE-16	SAE-12	PPHB-LAN-HEM

*Add modifier /S to order Ductile Iron for pressure rating over 3000 psi.

Go to www.sunhydraulics.com for more product information and pricing.

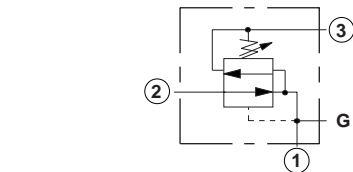
DIRECT ACTING ASSEMBLIES

0-40 GPM Cavity T-17A



Ports 1 and 2	Port 3	Assembly Model Code*
1" NPTF	3/4" NPTF	PRHB-LAN-HEE
1 1/4" NPTF	3/4" NPTF	PRHB-LAN-HEF
SAE-12	SAE-12	PRHB-LAN-HEL
SAE-16	SAE-12	PRHB-LAN-HEM

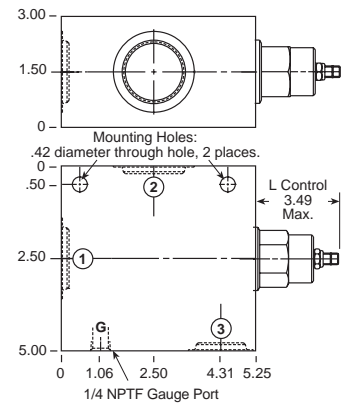
*Add modifier /S to order Ductile Iron for pressure rating over 3000 psi.



Ports 1 and 2	Port 3	Assembly Model Code*
1" NPTF	1" NPTF	PPJB-LAN-KEE
1 1/4" NPTF	1" NPTF	PPJB-LAN-KEF
SAE-16	SAE-16	PPJB-LAN-KEM
SAE-20	SAE-16	PPJB-LAN-KEN

*Add modifier /S to order Ductile Iron for pressure rating over 3000 psi.

0-80 GPM Cavity T-19A



Ports 1 and 2	Port 3	Assembly Model Code*
1" NPTF	1" NPTF	PRJB-LAN-KEE
1 1/4" NPTF	1" NPTF	PRJB-LAN-KEF
SAE-16	SAE-16	PRJB-LAN-KEM
SAE-20	SAE-16	PRJB-LAN-KEN

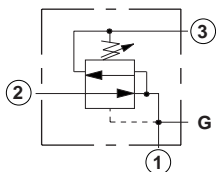
*Add modifier /S to order Ductile Iron for pressure rating over 3000 psi.

NOTES: Page 42 for cartridge models PP*B-*** and PR*B-*** shows performance curves, technical tips, and options. See page vii for technical information about line mount bodies including SAE flange pattern specifications. Consult your local Sun Distributor or the Sun Web Site for other port sizes available in the bodies shown above. Model Codes printed in red are Preferred Products and are readily available.

Line Mounted Assemblies

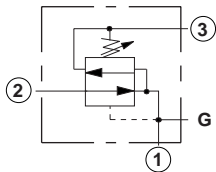
THREE PORT PRESSURE REDUCING/RELIEVING APPLICATIONS (90 DEGREE, 1.50" SAE C61/C62 FLANGE PORT BODIES, HIGH CAPACITY PORT 3)

PILOT OPERATED ASSEMBLIES



Ports 1, 2, and 3	Assembly Model Code*
1 1/2" SAE C61	PPJB-LAN-KER

*Add modifier /S to order Ductile Iron for pressure rating over 3000 psi.

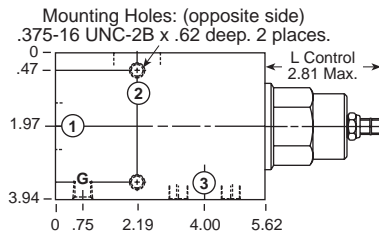
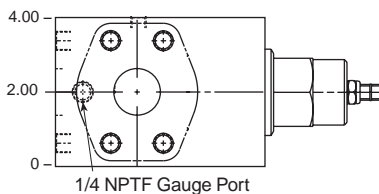


Ports 1, 2, and 3	Assembly Model Code*
1 1/2" SAE C62	PPJB-LAN-KE6

*Add modifier /S to order Ductile Iron for pressure rating over 3000 psi.

Go to www.sunhydraulics.com for more product information and pricing.

0-80 GPM Cavity T-19A

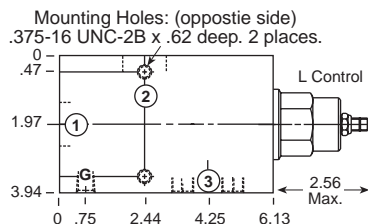
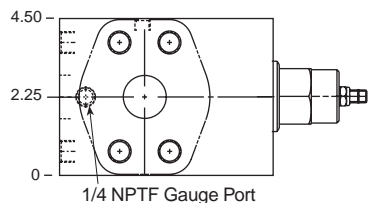


DIRECT ACTING ASSEMBLIES

Ports 1, 2, and 3	Assembly Model Code*
1 1/2" SAE C61	PRJB-LAN-KER

*Add modifier /S to order Ductile Iron for pressure rating over 3000 psi.

0-80 GPM Cavity T-19A



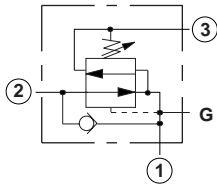
Ports 1, 2, and 3	Assembly Model Code*
1 1/2" SAE C62	PRJB-LAN-KE6

*Add modifier /S to order Ductile Iron for pressure rating over 3000 psi.

NOTES: Page 42 for cartridge models PP*B-*** and PR*B-*** shows performance curves, technical tips, and options. See page vii for technical information about line mount bodies including SAE flange pattern specifications. Consult your local Sun Distributor or the Sun Web Site for other port sizes available in the bodies shown above.

THREE PORT PRESSURE REDUCING/RELIEVING APPLICATIONS (BODIES WITH REVERSE FREE FLOW CHECK)

PILOT OPERATED ASSEMBLIES

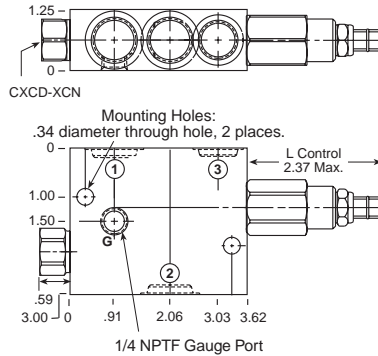


Go to www.sunhydraulics.com for more product information and pricing.

DIRECT ACTING ASSEMBLIES

0-10 GPM Cavity T-11A

Ports 1 and 2	Port 3	Assembly Model Code*
3/8" NPTF	3/8" NPTF	PPDB-LAN-E4B
1/2" NPTF	3/8" NPTF	PPDB-LAN-E4C
SAE-6	SAE-6	PPDB-LAN-E4I
SAE-8	SAE-8	PPDB-LAN-E4J
SAE-10	SAE-8	PPDB-LAN-E4K

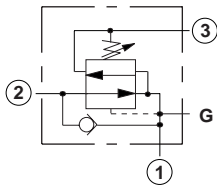


Ports 1 and 2	Port 3	Assembly Model Code*
3/8" NPTF	3/8" NPTF	PRDB-LAN-E4B
1/2" NPTF	3/8" NPTF	PRDB-LAN-E4C
SAE-6	SAE-6	PRDB-LAN-E4I
SAE-8	SAE-8	PRDB-LAN-E4J
SAE-10	SAE-8	PRDB-LAN-E4K

*Add modifier /S to order Ductile Iron for pressure rating over 3000 psi.

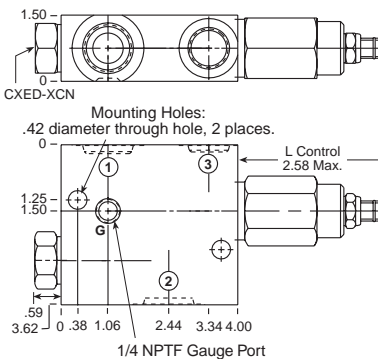
*Add modifier /S to order Ductile Iron for pressure rating over 3000 psi.

PILOT OPERATED ASSEMBLIES



0-20 GPM Cavity T-2A

Ports 1 and 2	Port 3	Assembly Model Code*
1/2" NPTF	1/2" NPTF	PPFB-LAN-B4C
3/4" NPTF	1/2" NPTF	PPFB-LAN-B4D
SAE-8	SAE-8	PPFB-LAN-B4J
SAE-10	SAE-10	PPFB-LAN-B4K



Ports 1 and 2	Port 3	Assembly Model Code*
1/2" NPTF	1/2" NPTF	PRFB-LAN-B4C
3/4" NPTF	1/2" NPTF	PRFB-LAN-B4D
SAE-8	SAE-8	PRFB-LAN-B4J
SAE-10	SAE-10	PRFB-LAN-B4K

*Add modifier /S to order Ductile Iron for pressure rating over 3000 psi.

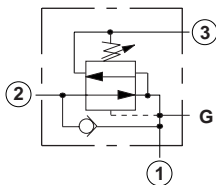
*Add modifier /S to order Ductile Iron for pressure rating over 3000 psi.

NOTES: Page 42 for cartridge models PP*B-*** and PR*B-*** shows performance curves, technical tips, and options.
See page vii for technical information about line mount bodies including SAE flange pattern specifications.
Consult your local Sun Distributor or the Sun Web Site for other port sizes available in the bodies shown above.

Line Mounted Assemblies

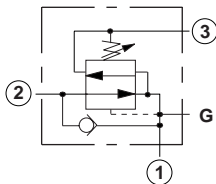
THREE PORT PRESSURE REDUCING/RELIEVING APPLICATIONS (BODIES WITH REVERSE FREE FLOW CHECK, HIGH CAPACITY PORT 3)

PILOT OPERATED ASSEMBLIES



Ports 1 and 2	Port 3	Assembly Model Code*
1" NPTF	3/4" NPTF	PPHB-LAN-H4E
1 1/4" NPTF	3/4" NPTF	PPHB-LAN-H4F
SAE-12	SAE-12	PPHB-LAN-H4L
SAE-16	SAE-12	PPHB-LAN-H4M

*Add modifier /S to order Ductile Iron for pressure rating over 3000 psi.

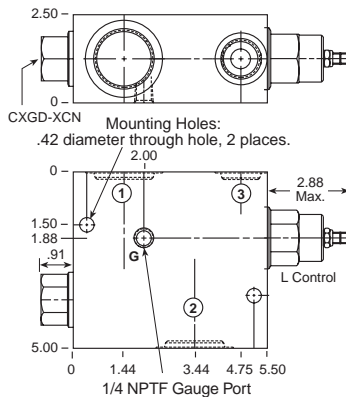


Ports 1 and 2	Port 3	Assembly Model Code*
1" NPTF	3/4" NPTF	PPJB-LAN-K4E
1 1/4" NPTF	3/4" NPTF	PPJB-LAN-K4F

*Add modifier /S to order Ductile Iron for pressure rating over 3000 psi.

Go to www.sunhydraulics.com for more product information and pricing.

0-40 GPM Cavity T-17A

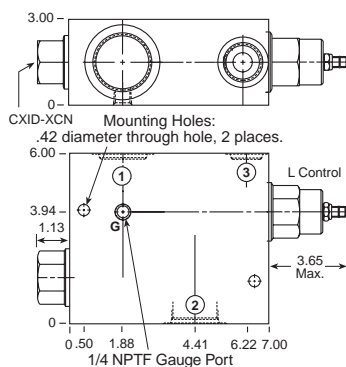


DIRECT ACTING ASSEMBLIES

Ports 1 and 2	Port 3	Assembly Model Code*
1" NPTF	3/4" NPTF	PRHB-LAN-H4E
1 1/4" NPTF	3/4" NPTF	PRHB-LAN-H4F
SAE-12	SAE-12	PRHB-LAN-H4L
SAE-16	SAE-12	PRHB-LAN-H4M

*Add modifier /S to order Ductile Iron for pressure rating over 3000 psi.

0-80 GPM Cavity T-19A



Ports 1 and 2	Port 3	Assembly Model Code*
1" NPTF	3/4" NPTF	PRJB-LAN-K4E
1 1/4" NPTF	3/4" NPTF	PRJB-LAN-K4F

NOTES: Page 42 for cartridge models PP*B-*** and PR*B-*** shows performance curves, technical tips, and options.
See page vii for technical information about line mount bodies including SAE flange pattern specifications.
Consult your local Sun Distributor or the Sun Web Site for other port sizes available in the bodies shown above.