

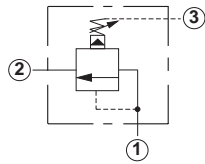
## Line Mounted Assemblies

# THREE PORT PRESSURE SEQUENCING APPLICATIONS (90 DEGREE BODIES)

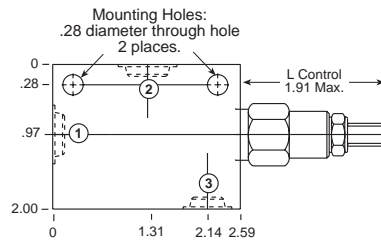
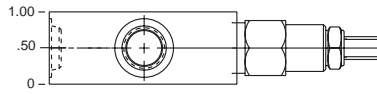
### PILOT OPERATED ASSEMBLIES

Go to [www.sunhydraulics.com](http://www.sunhydraulics.com)  
for more product information and pricing.

### DIRECT ACTING ASSEMBLIES



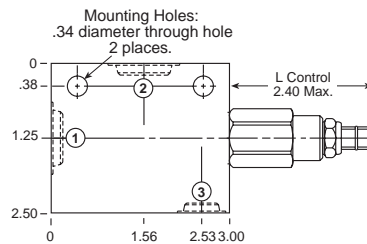
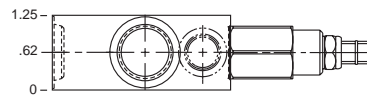
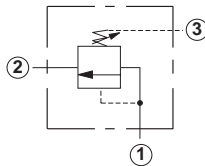
### 0-7.5 GPM Cavity T-163A



Ports 1 and 2	Port 3	Assembly Model Code*
1/4" NPTF	1/4" NPTF	<b>RSBC-LAN-JCA</b>
3/8" NPTF	1/4" NPTF	<b>RSBC-LAN-JCB</b>
SAE-4	SAE-4	<b>RSBC-LAN-JCH</b>
<b>SAE-6</b>	<b>SAE-4</b>	<b>RSBC-LAN-JCI</b>

\*Add modifier /S to order Ductile Iron for pressure rating over 3000 psi.

### 0-15 GPM Cavity T-11A



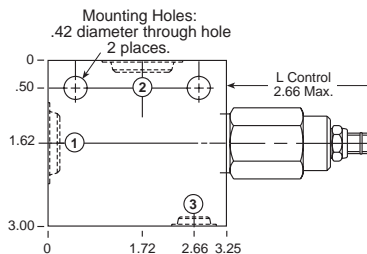
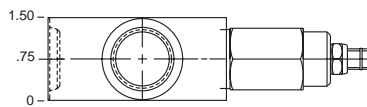
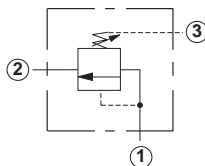
Ports 1 and 2	Port 3	Assembly Model Code*
3/8" NPTF	1/4" NPTF	<b>RSDC-LAN-ECB</b>
1/2" NPTF	1/4" NPTF	<b>RSDC-LAN-ECC</b>
SAE-4	SAE-4	<b>RSDC-LAN-ECH</b>
SAE-6	SAE-6	<b>RSDC-LAN-ECI</b>
<b>SAE-8</b>	<b>SAE-6</b>	<b>RSDC-LAN-ECJ</b>

\*Add modifier /S to order Ductile Iron for pressure rating over 3000 psi.

Ports 1 and 2	Port 3	Assembly Model Code*
3/8" NPTF	1/4" NPTF	<b>SXCA-LAN-ECB</b>
1/2" NPTF	1/4" NPTF	<b>SXCA-LAN-ECC</b>
SAE-4	SAE-4	<b>SXCA-LAN-ECH</b>
SAE-6	SAE-6	<b>SXCA-LAN-ECI</b>
SAE-8	SAE-6	<b>SXCA-LAN-ECJ</b>

\*Add modifier /S to order Ductile Iron for pressure rating over 3000 psi.

### 0-30 GPM Cavity T-2A



Ports 1 and 2	Port 3	Assembly Model Code*
3/4" NPTF	1/4" NPTF	<b>RSFC-LAN-BCD</b>
SAE-6	SAE-6	<b>RSFC-LAN-BCI</b>
SAE-8	SAE-6	<b>RSFC-LAN-BCJ</b>
<b>SAE-12</b>	<b>SAE-6</b>	<b>RSFC-LAN-BCL</b>

\*Add modifier /S to order Ductile Iron for pressure rating over 3000 psi.

Ports 1 and 2	Port 3	Assembly Model Code*
3/4" NPTF	1/4" NPTF	<b>SXEA-LAN-BCD</b>
SAE-6	SAE-6	<b>SXEA-LAN-BCI</b>
SAE-8	SAE-6	<b>SXEA-LAN-BCJ</b>
SAE-12	SAE-6	<b>SXEA-LAN-BCL</b>

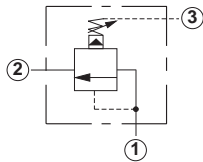
\*Add modifier /S to order Ductile Iron for pressure rating over 3000 psi.

NOTES: Page 20 for cartridge models RS\*C-\*\*\* and SX\*A-\*\*\* shows performance curves, technical tips, and options. See page vii for technical information about line mount bodies including SAE flange pattern specifications. Consult your local Sun Distributor or the Sun Web Site for other port sizes available in the bodies shown above. Model Codes printed in red are Preferred Products and are readily available.

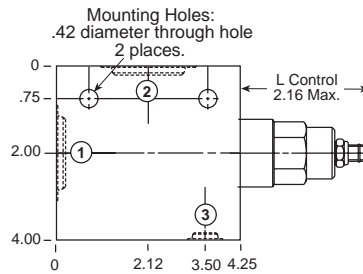
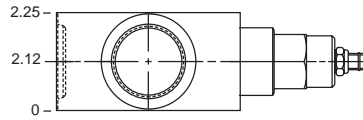
# THREE PORT PRESSURE SEQUENCING APPLICATIONS (90 DEGREE BODIES)

## PILOT OPERATED ASSEMBLIES

Go to [www.sunhydraulics.com](http://www.sunhydraulics.com) for more product information and pricing.

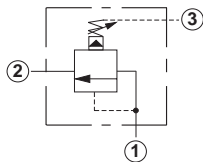


### 0-60 GPM Cavity T-17A

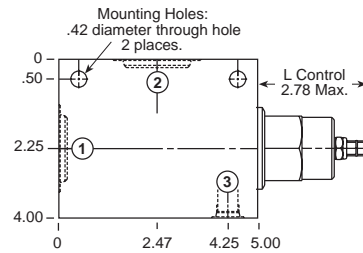
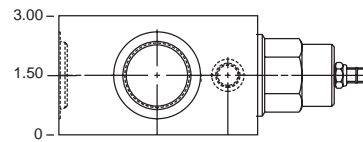


Ports 1 and 2	Port 3	Assembly Model Code*
1" NPTF	1/4" NPTF	<b>RSHC-LAN-HCE</b>
1 1/4" NPTF	1/4" NPTF	<b>RSHC-LAN-HCF</b>
SAE-12	SAE-6	<b>RSHC-LAN-HCL</b>
<b>SAE-16</b>	<b>SAE-6</b>	<b>RSHC-LAN-HCM</b>

\*Add modifier /S to order Ductile Iron for pressure rating over 3000 psi.



### 0-120 GPM Cavity T-19A



Ports 1 and 2	Port 3	Assembly Model Code*
1" NPTF	1/4" NPTF	<b>RSJC-LAN-KCE</b>
<b>1 1/4" NPTF</b>	<b>1/4" NPTF</b>	<b>RSJC-LAN-KCF</b>

\*Add modifier /S to order Ductile Iron for pressure rating over 3000 psi.

NOTES: Page 20 for cartridge models RS\*C-\*\*\* and SX\*A-\*\*\* shows performance curves, technical tips, and options. See page vii for technical information about line mount bodies including SAE flange pattern specifications. Consult your local Sun Distributor or the Sun Web Site for other port sizes available in the bodies shown above. **Model Codes printed in red are Preferred Products and are readily available.**

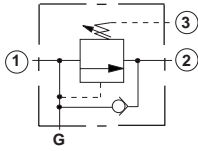
## Line Mounted Assemblies

# THREE PORT PRESSURE SEQUENCING APPLICATIONS (BODIES WITH REVERSE FREE FLOW CHECK)

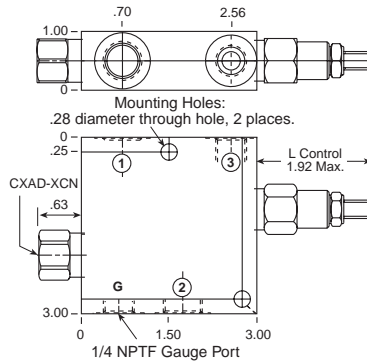
### PILOT OPERATED ASSEMBLIES

Go to [www.sunhydraulics.com](http://www.sunhydraulics.com) for more product information and pricing.

### DIRECT ACTING ASSEMBLIES

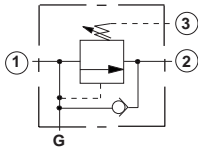


### 0-7.5 GPM Cavity T-163A

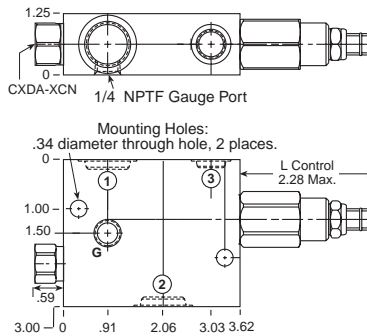


Ports 1 and 2	Port 3	Assembly Model Code*
1/4" NPTF	1/4" NPTF	<b>RSBC-LAN-J6*</b>
3/8" NPTF	1/4" NPTF	<b>RSBC-LAN-J6*</b>
SAE-4	SAE-4	<b>RSBC-LAN-J6*</b>
<b>SAE-6</b>	<b>SAE-4</b>	<b>RSBC-LAN-J6*</b>

\*Add modifier /S to order Ductile Iron for pressure rating over 3000 psi.



### 0-15 GPM Cavity T-11A

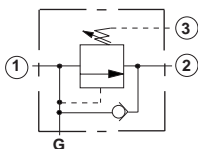


Ports 1 and 2	Port 3	Assembly Model Code*
3/8" NPTF	1/4" NPTF	<b>RSDC-LAN-E6B</b>
1/2" NPTF	1/4" NPTF	<b>RSDC-LAN-E6C</b>
SAE-6	SAE-6	<b>RSDC-LAN-E6I</b>
SAE-8	SAE-6	<b>RSDC-LAN-E6J</b>
<b>SAE-10</b>	<b>SAE-6</b>	<b>RSDC-LAN-E6K</b>

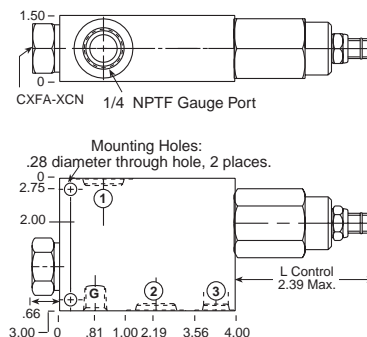
\*Add modifier /S to order Ductile Iron for pressure rating over 3000 psi.

Ports 1 and 2	Port 3	Assembly Model Code*
3/8" NPTF	1/4" NPTF	<b>SXCA-LAN-E6B</b>
1/2" NPTF	1/4" NPTF	<b>SXCA-LAN-E6C</b>
SAE-6	SAE-6	<b>SXCA-LAN-E6I</b>
SAE-8	SAE-6	<b>SXCA-LAN-E6J</b>
SAE-10	SAE-6	<b>SXCA-LAN-E6K</b>

\*Add modifier /S to order Ductile Iron for pressure rating over 3000 psi.



### 0-30 GPM Cavity T-2A



Ports 1 and 2	Port 3	Assembly Model Code*
3/8" NPTF	1/4" NPTF	<b>RSFC-LAN-B6B</b>
1/2" NPTF	1/4" NPTF	<b>RSFC-LAN-B6C</b>
3/4" NPTF	1/4" NPTF	<b>RSFC-LAN-B6D</b>
SAE-8	SAE-6	<b>RSFC-LAN-B6J</b>
<b>SAE-10</b>	<b>SAE-6</b>	<b>RSFC-LAN-B6K</b>

\*Add modifier /S to order Ductile Iron for pressure rating over 3000 psi.

Ports 1 and 2	Port 3	Assembly Model Code*
3/8" NPTF	1/4" NPTF	<b>SXEA-LAN-B6B</b>
1/2" NPTF	1/4" NPTF	<b>SXEA-LAN-B6C</b>
3/4" NPTF	1/4" NPTF	<b>SXEA-LAN-B6D</b>
SAE-8	SAE-6	<b>SXEA-LAN-B6J</b>
SAE-10	SAE-6	<b>SXEA-LAN-B6K</b>

\*Add modifier /S to order Ductile Iron for pressure rating over 3000 psi.

NOTES: Page 20 for cartridge models RS\*C-\*\*\* and SX\*A-\*\*\* shows performance curves, technical tips, and options. See page vii for technical information about line mount bodies including SAE flange pattern specifications. Consult your local Sun Distributor or the Sun Web Site for other port sizes available in the bodies shown above. Model Codes printed in red are Preferred Products and are readily available.



## Line Mounted Assemblies

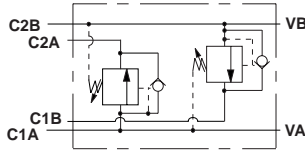
# THREE PORT DUAL PRESSURE SEQUENCING APPLICATIONS (2 CAVITY BODIES WITH REVERSE FREE FLOW CHECKS)

The line-mounted dual sequencing assembly can be used in applications where two hydraulic cylinders are to be operated in a particular sequence when both extending and retracting. The block eliminates a great deal of pipework when compared to using conventional line mounted valves.

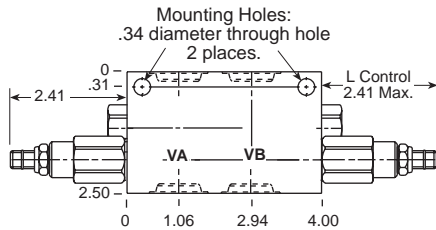
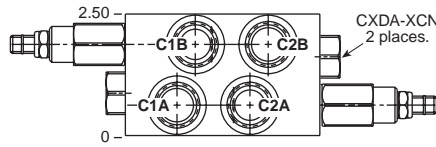
### PILOT OPERATED ASSEMBLIES

Go to [www.sunhydraulics.com](http://www.sunhydraulics.com) for more product information and pricing.

### DIRECT ACTING ASSEMBLIES



### 0-15 GPM Cavity T-11A

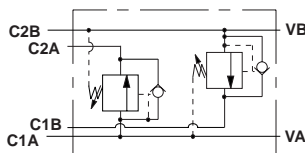


All Ports	Assembly Model Code*
3/8" NPTF	<b>RSDC-LAN-E8B</b>
1/2" NPTF	<b>RSDC-LAN-E8C</b>
SAE-6	<b>RSDC-LAN-E8I</b>
SAE-8	<b>RSDC-LAN-E8J</b>

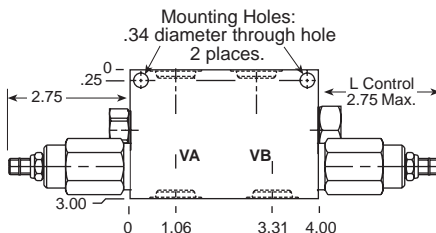
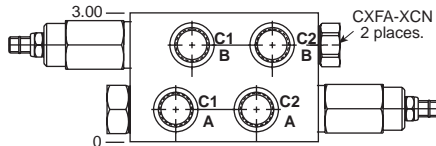
All Ports	Assembly Model Code*
3/8" NPTF	<b>SXCA-LAN-E8B</b>
1/2" NPTF	<b>SXCA-LAN-E8C</b>
SAE-4	<b>SXCA-LAN-E8I</b>
SAE-6	<b>SXCA-LAN-E8J</b>

\*Add modifier /S to order Ductile Iron for pressure rating over 3000 psi.

\*Add modifier /S to order Ductile Iron for pressure rating over 3000 psi.



### 0-30 GPM Cavity T-2A

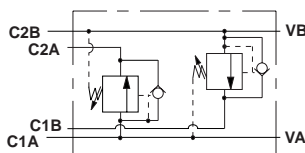


All Ports	Assembly Model Code*
1/2" NPTF	<b>RSFC-LAN-B8C</b>
3/4" NPTF	<b>RSFC-LAN-B8D</b>
SAE-8	<b>RSFC-LAN-B8J</b>

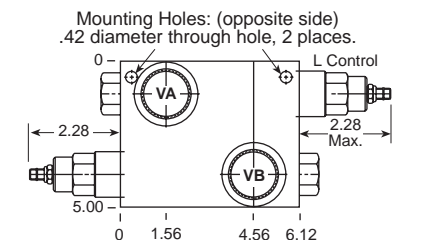
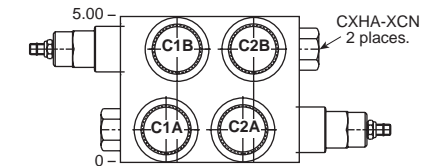
All Ports	Assembly Model Code*
1/2" NPTF	<b>SXEA-LAN-B8C</b>
3/4" NPTF	<b>SXEA-LAN-B8D</b>
SAE-8	<b>SXEA-LAN-B8J</b>

\*Add modifier /S to order Ductile Iron for pressure rating over 3000 psi.

\*Add modifier /S to order Ductile Iron for pressure rating over 3000 psi.



### 0-60 GPM Cavity T-17A



All Ports	Assembly Model Code*
1" NPTF	<b>RSHC-LAN-H8E</b>
1 1/4" NPTF	<b>RSHC-LAN-H8F</b>

\*Add modifier /S to order Ductile Iron for pressure rating over 3000 psi.

NOTES: Page 20 for cartridge models RS\*C-\*\*\* and SX\*A-\*\*\* shows performance curves, technical tips, and options. See page vii for technical information about line mount bodies including SAE flange pattern specifications. Consult your local Sun Distributor or the Sun Web Site for other port sizes available in the bodies shown above.