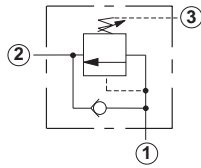


Line Mounted Assemblies

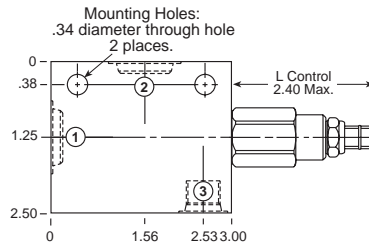
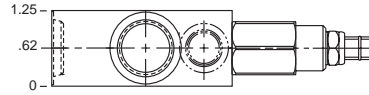
THREE PORT PRESSURE SEQUENCING APPLICATIONS (90 DEGREE BODIES)

Go to www.sunhydraulics.com
for more product information and pricing.

**DIRECT ACTING
ASSEMBLIES**

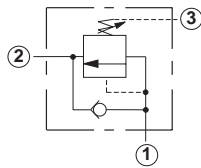


0-15 GPM Cavity T-11A

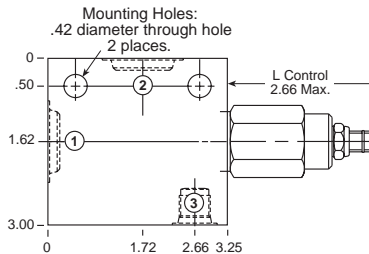
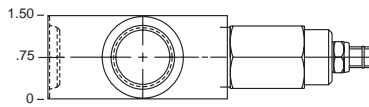


Ports 1 and 2	Port 3	Assembly Model Code*
3/8" NPTF	1/4" NPTF	SCCA-LAN-ECB
1/2" NPTF	1/4" NPTF	SCCA-LAN-ECC
SAE-4	SAE-4	SCCA-LAN-ECH
SAE-6	SAE-6	SCCA-LAN-ECI
SAE-8	SAE-6	SCCA-LAN-ECJ

*Add modifier **/S** to order Ductile Iron for pressure rating over 3000 psi.



0-30 GPM Cavity T-2A



Ports 1 and 2	Port 3	Assembly Model Code*
3/8" NPTF	1/4" NPTF	SCEA-LAN-BCB
1/2" NPTF	1/4" NPTF	SCEA-LAN-BCC
3/4" NPTF	1/4" NPTF	SCEA-LAN-BCD
SAE-6	SAE-6	SCEA-LAN-BCH
SAE-8	SAE-6	SCEA-LAN-BCI

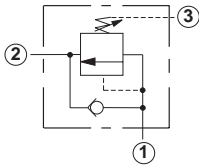
*Add modifier **/S** to order Ductile Iron for pressure rating over 3000 psi.

NOTES: Page 28 for cartridge model SC*A-*** shows performance curves, technical tips, and options.
See page vii for technical information about line mount bodies including SAE flange pattern specifications.
Consult your local Sun Distributor or the Sun Web Site for other port sizes available in the bodies shown above.
Model Codes printed in red are Preferred Products and are readily available.

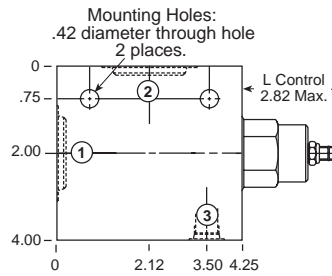
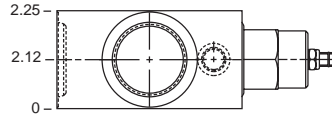
THREE PORT PRESSURE SEQUENCING APPLICATIONS (90 DEGREE BODIES)

Go to www.sunhydraulics.com for more product information and pricing.

**DIRECT ACTING
ASSEMBLIES**

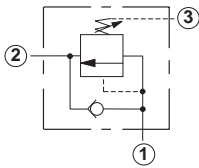


0-60 GPM Cavity T-17A

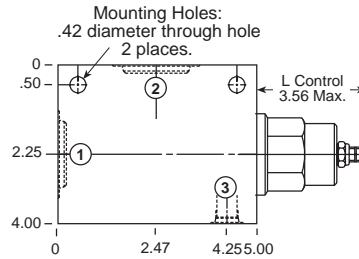
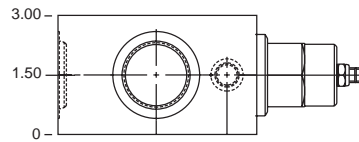


Ports 1 and 2	Port 3	Assembly Model Code*
1" NPTF	1/4" NPTF	SCGA-LAN-HCE
1 1/4" NPTF	1/4" NPTF	SCGA-LAN-HCF
SAE-12	SAE-6	SCGA-LAN-HCL
SAE-16	SAE-6	SCGA-LAN-HCM

*Add modifier /S to order Ductile Iron for pressure rating over 3000 psi.



0-120 GPM Cavity T-19A



Ports 1 and 2	Port 3	Assembly Model Code*
1" NPTF	1/4" NPTF	SCIA-LAN-KCE
1 1/4" NPTF	1/4" NPTF	SCIA-LAN-KCF

*Add modifier /S to order Ductile Iron for pressure rating over 3000 psi.

NOTES: Page 28 for cartridge model SC*A-*** shows performance curves, technical tips, and options.
See page vii for technical information about line mount bodies including SAE flange pattern specifications.
Consult your local Sun Distributor or the Sun Web Site for other port sizes available in the bodies shown above.
Model Codes printed in red are Preferred Products and are readily available.