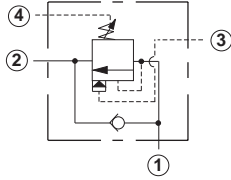


Line Mounted Assemblies

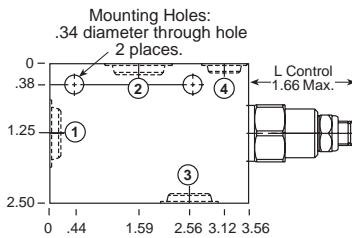
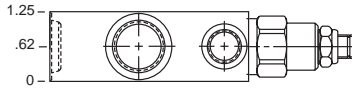
FOUR PORT LOAD CONTROL APPLICATIONS (90 DEGREE BODIES)

PILOT RATIO
3:1, 1:1



Go to www.sunhydraulics.com
for more product information and pricing.

0-15 GPM Cavity T-21A



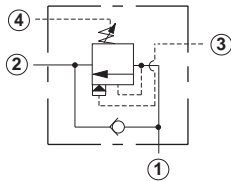
Ports 1 and 2	Ports 3 and 4	Assembly Model Code*
3/8" NPTF	3: 3/8" NPTF 4: 1/4" NPTF	CWC*-LHN-MAB
1/2" NPTF	3: 3/8" NPTF 4: 1/4" NPTF	CWC*-LHN-MAC
SAE-6	3: SAE-6 4: SAE-6	CWC*-LHN-MAI
SAE-8	3: SAE-8 4: SAE-6	CWC*-LHN-MAJ
SAE-10	3: SAE-8 4: SAE-6	CWC*-LHN-MAK

The asterisk () shown in the fourth digit of the model code indicates the counterbalance pilot ratio of the cartridge and must be specified by customer. See page 70. Add modifier /S to order Ductile Iron for pressure rating over 3000 psi.

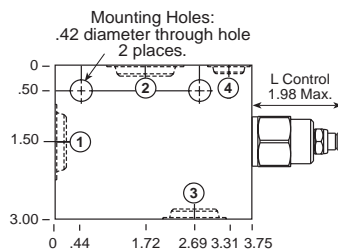
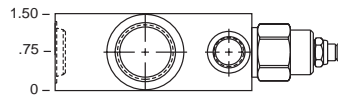
PILOT RATIO
4.5:1, 2:1

Ports 1 and 2	Ports 3 and 4	Assembly Model Code*
3/8" NPTF	3: 3/8" NPTF 4: 1/4" NPTF	CWC*-LGN-MAB
1/2" NPTF	3: 3/8" NPTF 4: 1/4" NPTF	CWC*-LGN-MAC
SAE-6	3: SAE-6 4: SAE-6	CWC*-LGN-MAI
SAE-8	3: SAE-8 4: SAE-6	CWC*-LGN-MAJ
SAE-10	3: SAE-8 4: SAE-6	CWC*-LGN-MAK

The asterisk () shown in the fourth digit of the model code indicates the counterbalance pilot ratio of the cartridge and must be specified by customer. See page 70. Add modifier /S to order Ductile Iron for pressure rating over 3000 psi.



0-30 GPM Cavity T-22A



Ports 1 and 2	Ports 3 and 4	Assembly Model Code*
1/2" NPTF	3: 1/2" NPTF 4: 1/4" NPTF	CWE*-LHN-NAC
3/4" NPTF	3: 1/2" NPTF 4: 1/4" NPTF	CWE*-LHN-NAD
SAE-8	3: SAE-8 4: SAE-6	CWE*-LHN-NAJ
SAE-10	3: SAE-10 4: SAE-6	CWE*-LHN-NAK

The asterisk () shown in the fourth digit of the model code indicates the counterbalance pilot ratio of the cartridge and must be specified by customer. See page 70. Add modifier /S to order Ductile Iron for pressure rating over 3000 psi.

Ports 1 and 2	Ports 3 and 4	Assembly Model Code*
1/2" NPTF	3: 1/2" NPTF 4: 1/4" NPTF	CWE*-LGN-NAC
3/4" NPTF	3: 1/2" NPTF 4: 1/4" NPTF	CWE*-LGN-NAD
SAE-8	3: SAE-8 4: SAE-6	CWE*-LGN-NAJ
SAE-10	3: SAE-10 4: SAE-6	CWE*-LGN-NAK

The asterisk () shown in the fourth digit of the model code indicates the counterbalance pilot ratio of the cartridge and must be specified by customer. See page 70. Add modifier /S to order Ductile Iron for pressure rating over 3000 psi.

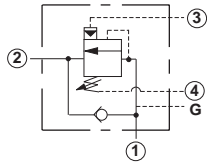
NOTES: Page 70 for cartridge models CW**.* shows performance curves, technical tips, and options.
See page vii for technical information about line mount bodies including SAE flange pattern specifications.
Consult your local Sun Distributor or the Sun Web Site for other port sizes available in the bodies shown above.
Model Codes printed in red are Preferred Products and are readily available.

FOUR PORT LOAD CONTROL APPLICATIONS (90 DEGREE BODIES)

**PILOT RATIO
3:1, 1:1**

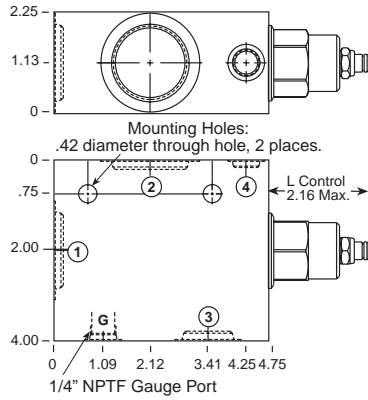
Go to www.sunhydraulics.com
for more product information and pricing.

**PILOT RATIO
5:1, 2:1**



0-60 GPM Cavity T-23A

Ports 1 and 2	Ports 3 and 4	Assembly Model Code*
1" NPTF	3: 3/4" NPTF 4: 1/4" NPTF	CWG*-LHN-PAE
1 1/4" NPTF	3: 3/4" NPTF 4: 1/4" NPTF	CWG*-LHN-PAF
SAE-12	3: SAE-12 4: SAE-6	CWG*-LHN-PAL
SAE-16	3: SAE-12 4: SAE-6	CWG*-LHN-PAM

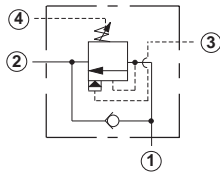


Ports 1 and 2	Ports 3 and 4	Assembly Model Code*
1" NPTF	3: 3/4" NPTF 4: 1/4" NPTF	CWG*-LGN-PAE
1 1/4" NPTF	3: 3/4" NPTF 4: 1/4" NPTF	CWG*-LGN-PAF
SAE-12	3: SAE-12 4: SAE-6	CWG*-LGN-PAL
SAE-16	3: SAE-12 4: SAE-6	CWG*-LGN-PAM

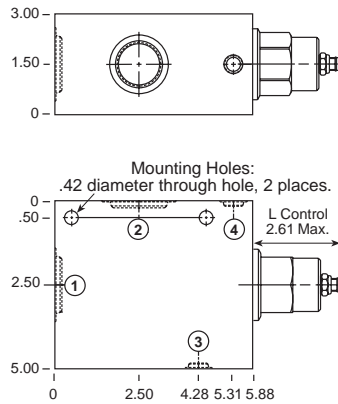
The asterisk () shown in the fourth digit of the model code indicates the counterbalance pilot ratio of the cartridge and must be specified by customer. See page 70. Add modifier /S to order Ductile Iron for pressure rating over 3000 psi.

The asterisk () shown in the fourth digit of the model code indicates the counterbalance pilot ratio of the cartridge and must be specified by customer. See page 70. Add modifier /S to order Ductile Iron for pressure rating over 3000 psi.

0-120 GPM Cavity T-24A



Ports 1 and 2	Ports 3 and 4	Assembly Model Code*
1" NPTF	1/4" NPTF	CWI*-LHN-QCE
1 1/4" NPTF	1/4" NPTF	CWI*-LHN-QCF
SAE-16	SAE-6	CWI*-LHN-QCM
SAE-20	SAE-6	CWI*-LHN-QCN



Ports 1 and 2	Ports 3 and 4	Assembly Model Code*
1" NPTF	1/4" NPTF	CWI*-LGN-QCE
1 1/4" NPTF	1/4" NPTF	CWI*-LGN-QCF
SAE-16	SAE-6	CWI*-LGN-QCM
SAE-20	SAE-6	CWI*-LGN-QCN

The asterisk () shown in the fourth digit of the model code indicates the counterbalance pilot ratio of the cartridge and must be specified by customer. See page 70. Add modifier /S to order Ductile Iron for pressure rating over 3000 psi.

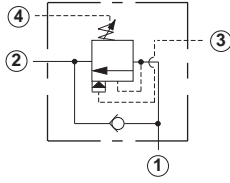
The asterisk () shown in the fourth digit of the model code indicates the counterbalance pilot ratio of the cartridge and must be specified by customer. See page 70. Add modifier /S to order Ductile Iron for pressure rating over 3000 psi.

NOTES: Page 70 for cartridge models CW**.* shows performance curves, technical tips, and options.
See page vii for technical information about line mount bodies including SAE flange pattern specifications.
Consult your local Sun Distributor or the Sun Web Site for other port sizes available in the bodies shown above.
Model Codes printed in red are Preferred Products and are readily available.

Line Mounted Assemblies

**FOUR PORT LOAD CONTROL APPLICATIONS
(2.00" SAE C62 FLANGE PORT BODY, 2 CAVITIES)**

**PILOT RATIO
3:1, 1:1**

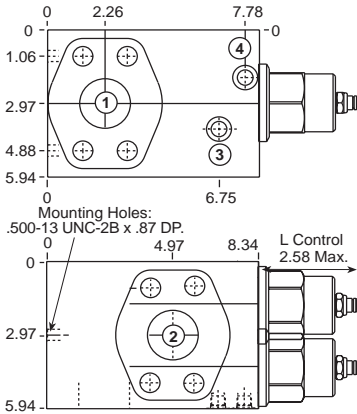


Ports 1 and 2	Ports 3 and 4	Assembly Model Code*
2" SAE C62	SAE-6	CW1*-LHN-Z9T

Go to www.sunhydraulics.com for more product information and pricing.

**PILOT RATIO
4:5:1, 2:1**

0-240 GPM Cavity T-24A



Ports 1 and 2	Ports 3 and 4	Assembly Model Code*
2" SAE C62	SAE-6	CW1*-LGN-Z9T

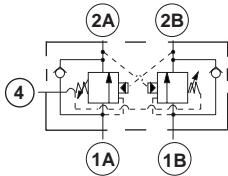
The asterisk () shown in the fourth digit of the model code indicates the counterbalance pilot ratio of the cartridge and must be specified by customer. See page 70. Add modifier /S to order Ductile Iron for pressure rating over 3000 psi.

The asterisk () shown in the fourth digit of the model code indicates the counterbalance pilot ratio of the cartridge and must be specified by customer. See page 70. Add modifier /S to order Ductile Iron for pressure rating over 3000 psi.

NOTES: Page 70 for cartridge models CW**.* shows performance curves, technical tips, and options.
See page vii for technical information about line mount bodies including SAE flange pattern specifications.
Consult your local Sun Distributor or the Sun Web Site for other port sizes available in the bodies shown above.

**FOUR PORT LOAD CONTROL APPLICATIONS
(90 DEGREE CROSS-PILOTED BODIES, 2 CAVITIES, COMMON PORT 4)**

**PILOT RATIO
3:1, 1:1**

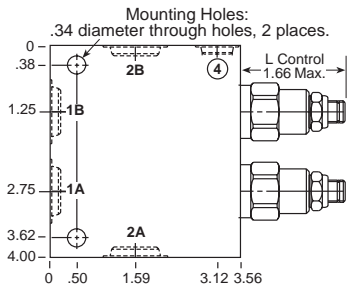
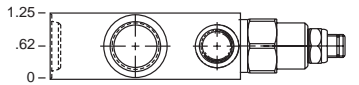


Ports 1A, 1B, 2A & 2B	Port 4	Assembly Model Code*
3/8" NPTF	1/4" NPTF	CWC*-LHN-XPB
1/2" NPTF	1/4" NPTF	CWC*-LHN-XPC
SAE-6	SAE-6	CWC*-LHN-XPI
SAE-8	SAE-6	CWC*-LHN-XPJ
SAE-10	SAE-6	CWC*-LHN-XPK

The asterisk () shown in the fourth digit of the model code indicates the counterbalance pilot ratio of the cartridge and must be specified by customer. See page 70. Add modifier /S to order Ductile Iron for pressure rating over 3000 psi.

Go to www.sunhydraulics.com for more product information and pricing.

0-15 GPM Cavity T-21A

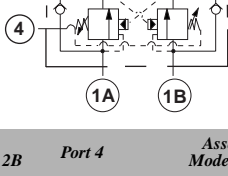


**PILOT RATIO
5:1, 2:1**

Ports 1A, 1B, 2A & 2B	Port 4	Assembly Model Code*
3/8" NPTF	1/4" NPTF	CWC*-LFN-XPB
1/2" NPTF	1/4" NPTF	CWC*-LFN-XPC
SAE-6	SAE-6	CWC*-LFN-XPI
SAE-8	SAE-6	CWC*-LFN-XPJ
SAE-10	SAE-6	CWC*-LFN-XPK

The asterisk () shown in the fourth digit of the model code indicates the counterbalance pilot ratio of the cartridge and must be specified by customer. See page 70. Add modifier /S to order Ductile Iron for pressure rating over 3000 psi.

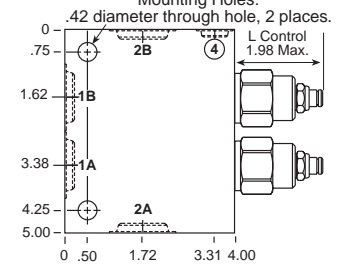
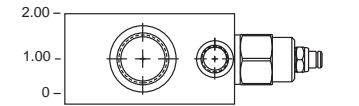
**PILOT RATIO
3:1, 1:1**



Ports 1A, 1B, 2A & 2B	Port 4	Assembly Model Code*
1/2" NPTF	1/4" NPTF	CWE*-LHN-XIC
3/4" NPTF	1/4" NPTF	CWE*-LHN-XID
SAE-6	SAE-6	CWE*-LHN-XII
SAE-8	SAE-6	CWE*-LHN-XIJ

The asterisk () shown in the fourth digit of the model code indicates the counterbalance pilot ratio of the cartridge and must be specified by customer. See page 70. Add modifier /S to order Ductile Iron for pressure rating over 3000 psi.

0-30 GPM Cavity T-22A



Ports 1A, 1B, 2A & 2B	Port 4	Assembly Model Code*
1/2" NPTF	1/4" NPTF	CWE*-LFN-XIC
3/4" NPTF	1/4" NPTF	CWE*-LFN-XID
SAE-6	SAE-6	CWE*-LFN-XII
SAE-8	SAE-6	CWE*-LFN-XIJ

The asterisk () shown in the fourth digit of the model code indicates the counterbalance pilot ratio of the cartridge and must be specified by customer. See page 70. Add modifier /S to order Ductile Iron for pressure rating over 3000 psi.

NOTES: Page 70 for cartridge models CW**.* shows performance curves, technical tips, and options. See page vii for technical information about line mount bodies including SAE flange pattern specifications. Consult your local Sun Distributor or the Sun Web Site for other port sizes available in the bodies shown above.

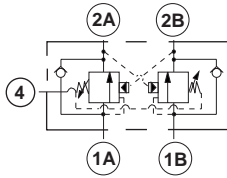
Line Mounted Assemblies

FOUR PORT LOAD CONTROL APPLICATIONS (90 DEGREE CROSS-PILOTED BODIES, 2 CAVITIES, COMMON PORT 4)

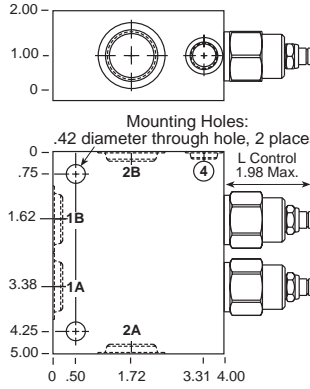
PILOT RATIO
3:1, 1:1

Go to www.sunhydraulics.com
for more product information and pricing.

PILOT RATIO
5:1, 2:1



0-60 GPM Cavity T-23A

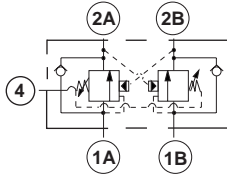


Ports 1A 1B, 2A & 2B	Port 4	Assembly Model Code*
1" NPTF	1/4" NPTF	CWG*-LHN-XME
1 1/4" NPTF	1/4" NPTF	CWG*-LHN-XMF
SAE-12	1/4" NPTF	CWG*-LHN-XML
SAE-16	1/4" NPTF	CWG*-LHN-XMM

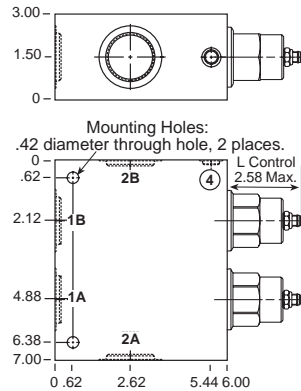
The asterisk () shown in the fourth digit of the model code indicates the counterbalance pilot ratio of the cartridge and must be specified by customer. See page 70. Add modifier /S to order Ductile Iron for pressure rating over 3000 psi.

Ports 1A 1B, 2A & 2B	Port 4	Assembly Model Code*
1" NPTF	1/4" NPTF	CWG*-LFN-XME
1 1/4" NPTF	1/4" NPTF	CWG*-LFN-XMF
SAE-12	1/4" NPTF	CWG*-LFN-XML
SAE-16	1/4" NPTF	CWG*-LFN-XMM

The asterisk () shown in the fourth digit of the model code indicates the counterbalance pilot ratio of the cartridge and must be specified by customer. See page 70. Add modifier /S to order Ductile Iron for pressure rating over 3000 psi.



0-120 GPM Cavity T-24A



Ports 1A 1B, 2A & 2B	Port 4	Assembly Model Code*
1" NPTF	1/4" NPTF	CWI*-LHN-XLE
1 1/4" NPTF	1/4" NPTF	CWI*-LHN-XLF

The asterisk () shown in the fourth digit of the model code indicates the counterbalance pilot ratio of the cartridge and must be specified by customer. See page 70. Add modifier /S to order Ductile Iron for pressure rating over 3000 psi.

Ports 1A 1B, 2A & 2B	Port 4	Assembly Model Code*
1" NPTF	1/4" NPTF	CWI*-LFN-XLE
1 1/4" NPTF	1/4" NPTF	CWI*-LFN-XLF

The asterisk () shown in the fourth digit of the model code indicates the counterbalance pilot ratio of the cartridge and must be specified by customer. See page 70. Add modifier /S to order Ductile Iron for pressure rating over 3000 psi.

NOTES: Page 70 for cartridge models CW**.* shows performance curves, technical tips, and options.
See page vii for technical information about line mount bodies including SAE flange pattern specifications.
Consult your local Sun Distributor or the Sun Web Site for other port sizes available in the bodies shown above.