

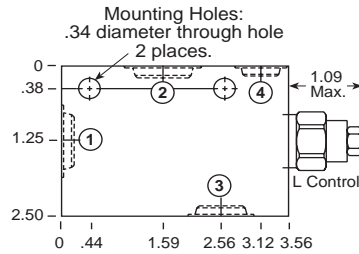
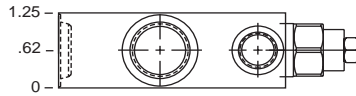
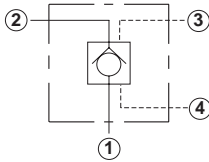
Line Mounted Assemblies

FOUR PORT PILOT-TO-OPEN CHECK APPLICATIONS (90 DEGREE BODIES)

VENTED

Go to www.sunhydraulics.com
for more product information and pricing.

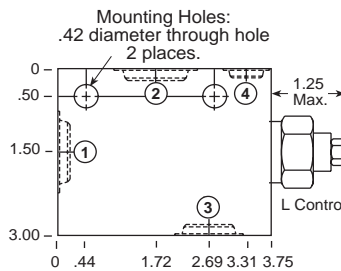
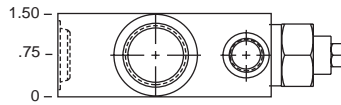
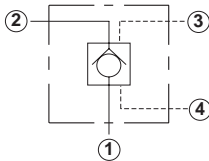
0-15 GPM Cavity T-21A



Ports 1 and 2	Ports 3 and 4	Assembly Model Code*
1/4" NPTF	3: 1/4" NPTF 4: 1/4" NPTF	CVCV-XCN-MAA
3/8" NPTF	3: 3/8" NPTF 4: 1/4" NPTF	CVCV-XCN-MAB
1/2" NPTF	3: 3/8" NPTF 4: 1/4" NPTF	CVCV-XCN-MAC
SAE-6	3: SAE-6 4: SAE-6	CVCV-XCN-MAI
SAE-8	3: SAE-8 4: SAE-6	CVCV-XCN-MAJ
SAE-10	3: SAE-8 4: SAE-6	CVCV-XCN-MAK

*Add modifier /S to order Ductile Iron for pressure rating over 3000 psi.

0-30 GPM Cavity T-22A



Ports 1 and 2	Ports 3 and 4	Assembly Model Code*
3/8" NPTF	3: 3/8" NPTF 4: 1/4" NPTF	CVEV-XCN-NAB
1/2" NPTF	3: 1/2" NPTF 4: 1/4" NPTF	CVEV-XCN-NAC
3/4" NPTF	3: 1/2" NPTF 4: 1/4" NPTF	CVEV-XCN-NAD
SAE-8	3: SAE-8 4: SAE-6	CVEV-XCN-NAJ
SAE-10	3: SAE-10 4: SAE-6	CVEV-XCN-NAK

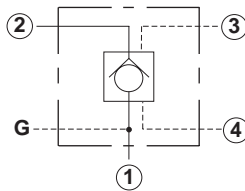
*Add modifier /S to order Ductile Iron for pressure rating over 3000 psi.

NOTES: Page 94 for cartridge model CV*V-*** shows performance curves, technical tips, and options.
See page vii for technical information about line mount bodies including SAE flange pattern specifications.
Consult your local Sun Distributor or the Sun Web Site for other port sizes available in the bodies shown above.
Model Codes printed in red are Preferred Products and are readily available.

FOUR PORT PILOT-TO-OPEN CHECK APPLICATIONS (90 DEGREE BODIES)

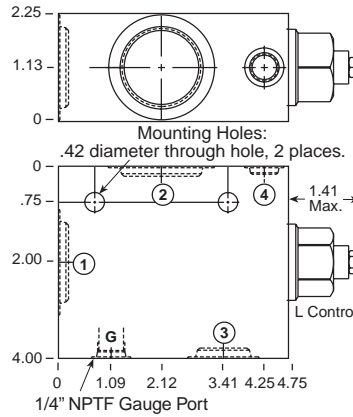
VENTED

Go to www.sunhydraulics.com for more product information and pricing.

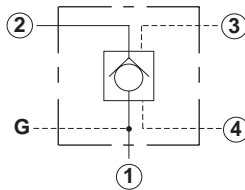


0-60 GPM Cavity T-23A

Ports 1 and 2	Ports 3 and 4	Assembly Model Code*
3/4" NPTF	3: 3/4" NPTF 4: 1/4" NPTF	CVGV-XCN-PCD
1" NPTF	3: 3/4" NPTF 4: 1/4" NPTF	CVGV-XCN-PCE
1 1/4" NPTF	3: 3/4" NPTF 4: 1/4" NPTF	CVGV-XCN-PCF
SAE-12	3: SAE-12 4: SAE-6	CVGV-XCN-PCL
SAE-16	3: SAE-12 4: SAE-6	CVGV-XCN-PCM

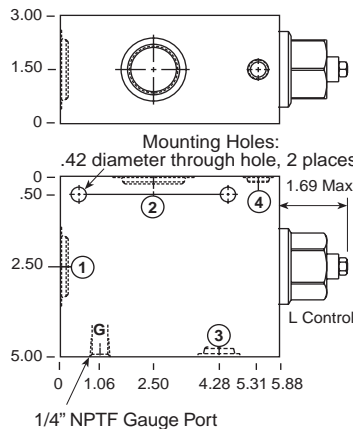


*Add modifier /S to order Ductile Iron for pressure rating over 3000 psi.



0-120 GPM Cavity T-24A

Ports 1 and 2	Ports 3 and 4	Assembly Model Code*
1" NPTF	3: 1" NPTF 4: 1/4" NPTF	CVIV-XCN-QAE
1 1/4" NPTF	3: 1/4" NPTF 4: 1/4" NPTF	CVIV-XCN-QAF
SAE-16	3: SAE-16 4: SAE-6	CVIV-XCN-QAM
SAE-20	3: SAE-16 4: SAE-6	CVIV-XCN-QAN



*Add modifier /S to order Ductile Iron for pressure rating over 3000 psi.

NOTES: Page 94 for cartridge model CV*V-*** shows performance curves, technical tips, and options.
See page vii for technical information about line mount bodies including SAE flange pattern specifications.
Consult your local Sun Distributor or the Sun Web Site for other port sizes available in the bodies shown above.
Model Codes printed in red are Preferred Products and are readily available.

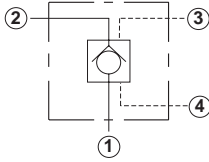
Line Mounted Assemblies

**FOUR PORT PILOT-TO-OPEN CHECK APPLICATIONS
(2.00" SAE C62 FLANGE PORT BODY, 2 CAVITIES)**

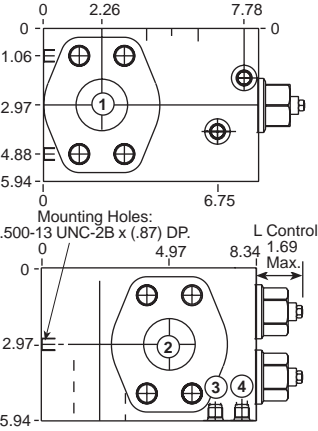
VENTED

Go to www.sunhydraulics.com
for more product information and pricing.

0-240 GPM Cavity T-24A



Ports 1 and 2	Ports 3 and 4	Assembly Model Code*
2" SAE C62	3: SAE-6 4: SAE-6	CVIV-XCN-Z9T



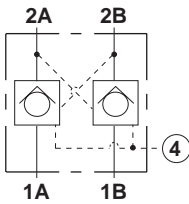
*Add modifier /S to order Ductile Iron for pressure rating over 3000 psi.

NOTES: Page 94 for cartridge model CV*V-*** shows performance curves, technical tips, and options.
See page vii for technical information about line mount bodies including SAE flange pattern specifications.
Consult your local Sun Distributor or the Sun Web Site for other port sizes available in the bodies shown above.

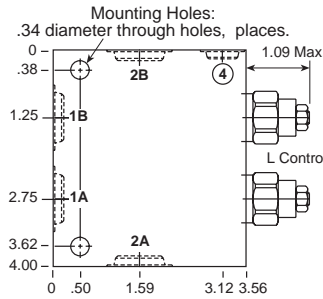
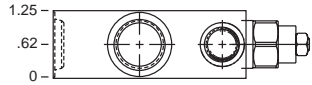
FOUR PORT PILOT-TO-OPEN CHECK APPLICATIONS (90 DEGREE CROSS-PILOTED BODIES, 2 CAVITIES, COMMON PORT 4)

Go to www.sunhydraulics.com for more product information and pricing.

VENTED

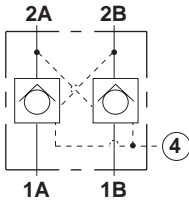


0-15 GPM Cavity T-21A

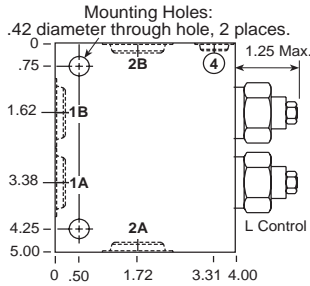
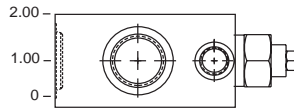


Ports 1B, 2A & 2B	Port 4	Assembly Model Code*
1/4" NPTF	1/4" NPTF	CVCV-XCN-XPA
3/8" NPTF	1/4" NPTF	CVCV-XCN-XPB
1/2" NPTF	1/4" NPTF	CVCV-XCN-XPC
SAE-6	SAE-6	CVCV-XCN-XPI
SAE-8	SAE-6	CVCV-XCN-XPJ
SAE-10	SAE-6	CVCV-XCN-XPK

*Add modifier /S to order Ductile Iron for pressure rating over 3000 psi.



0-30 GPM Cavity T-22A



Ports 1B, 2A & 2B	Port 4	Assembly Model Code*
3/8" NPTF	1/4" NPTF	CVEV-XCN-XIB
1/2" NPTF	1/4" NPTF	CVEV-XCN-XIC
3/4" NPTF	1/4" NPTF	CVEV-XCN-XID
SAE-6	SAE-6	CVEV-XCN-XII
SAE-8	SAE-6	CVEV-XCN-XIJ

*Add modifier /S to order Ductile Iron for pressure rating over 3000 psi.

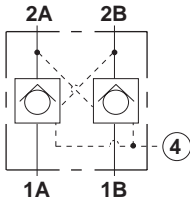
NOTES: Page 94 for cartridge model CV*V-*** shows performance curves, technical tips, and options.
See page vii for technical information about line mount bodies including SAE flange pattern specifications.
Consult your local Sun Distributor or the Sun Web Site for other port sizes available in the bodies shown above.

Line Mounted Assemblies

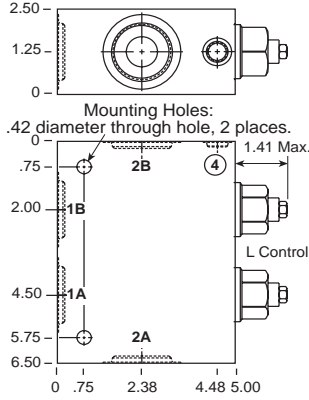
**FOUR PORT PILOT-TO-OPEN CHECK APPLICATIONS
(90 DEGREE CROSS-PILOTED BODIES, 2 CAVITIES, COMMON PORT 4)**

VENTED

Go to www.sunhydraulics.com
for more product information and pricing.



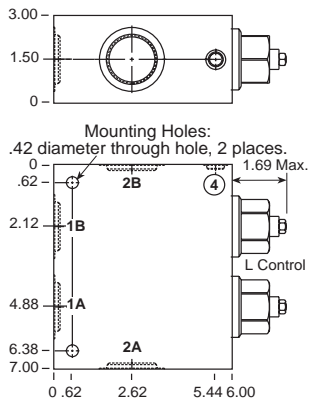
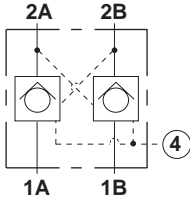
0-60 GPM Cavity T-23A



Ports 1A 1B, 2A & 2B	Port 4	Assembly Model Code*
3/4" NPTF	1/4" NPTF	CVGV-XCN-XMD
1" NPTF	1/4" NPTF	CVGV-XCN-XME
1 1/4" NPTF	1/4" NPTF	CVGV-XCN-XMF
SAE-12	1/4" NPTF	CVGV-XCN-XML
SAE-16	1/4" NPTF	CVGV-XCN-XMM

*Add modifier **/S** to order Ductile Iron for pressure rating over 3000 psi.

0-120 GPM Cavity T-24A



Ports 1A 1B, 2A & 2B	Port 4	Assembly Model Code*
1" NPTF	1/4" NPTF	CVIV-XCN-XLE
1 1/4" NPTF	1/4" NPTF	CVIV-XCN-XLF

*Add modifier **/S** to order Ductile Iron for pressure rating over 3000 psi.

NOTES: Page 94 for cartridge model CV*V-*** shows performance curves, technical tips, and options.
See page vii for technical information about line mount bodies including SAE flange pattern specifications.
Consult your local Sun Distributor or the Sun Web Site for other port sizes available in the bodies shown above.