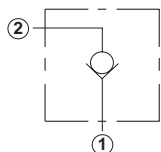


## Line Mounted Assemblies

TWO PORT FLOW CONTROL APPLICATIONS  
(90 DEGREE BODIES)FREE FLOW  
Port 1 to Port 2

0-10 GPM

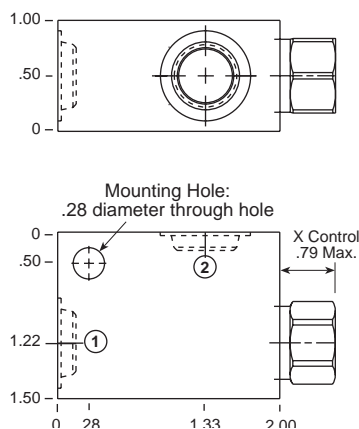


Ports 1 and 2	Assembly Model Code*
1/4" NPTF	<b>CXBA-X*N-AAA</b>
3/8" NPTF	<b>CXBA-X*N-AAB</b>
SAE-4	<b>CXBA-X*N-AAH</b>
SAE-6	<b>CXBA-X*N-AAI</b>

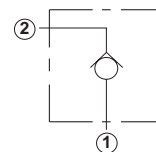
\*Add modifier /S to order Ductile Iron for pressure rating over 3000 psi.

Go to [www.sunhydraulics.com](http://www.sunhydraulics.com)  
for more product information and pricing.

Cavity T-162A

FREE FLOW  
Port 2 to Port 1

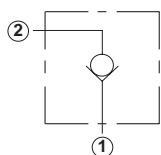
0-8 GPM



Ports 1 and 2	Assembly Model Code*
1/4" NPTF	<b>CXAD-X*N-AAA</b>
3/8" NPTF	<b>CXAD-X*N-AAB</b>
SAE-4	<b>CXAD-X*N-AAH</b>
SAE-6	<b>CXAD-X*N-AAI</b>

\*Add modifier /S to order Ductile Iron for pressure rating over 3000 psi.

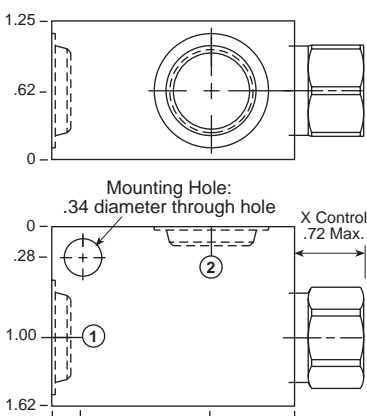
0-20 GPM



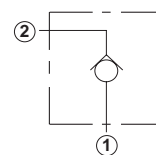
Ports 1 and 2	Assembly Model Code*
1/4" NPTF	<b>CXDA-X*N-GAA</b>
3/8" NPTF	<b>CXDA-X*N-GAB</b>
SAE-4	<b>CXDA-X*N-GAH</b>
SAE-6	<b>CXDA-X*N-GAI</b>
SAE-8	<b>CXDA-X*N-GAJ</b>

\*Add modifier /S to order Ductile Iron for pressure rating over 3000 psi.

Cavity T-13A



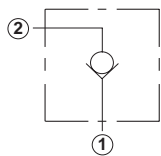
0-16 GPM



Ports 1 and 2	Assembly Model Code*
1/4" NPTF	<b>CXCD-X*N-GAA</b>
3/8" NPTF	<b>CXCD-X*N-GAB</b>
SAE-4	<b>CXCD-X*N-GAH</b>
SAE-6	<b>CXCD-X*N-GAI</b>
SAE-8	<b>CXCD-X*N-GAJ</b>

\*Add modifier /S to order Ductile Iron for pressure rating over 3000 psi.

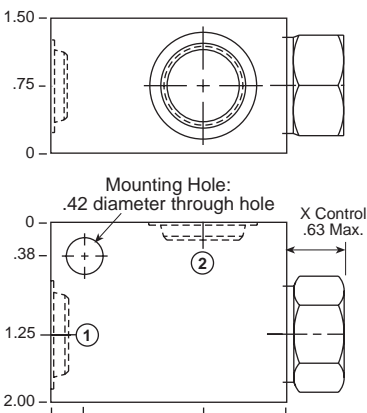
0-40 GPM



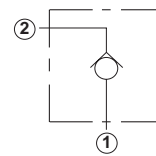
Ports 1 and 2	Assembly Model Code*
3/8" NPTF	<b>CXFA-X*N-DAB</b>
1/2" NPTF	<b>CXFA-X*N-DAC</b>
SAE-6	<b>CXFA-X*N-DAJ</b>
SAE-8	<b>CXFA-X*N-DAK</b>

\*Add modifier /S to order Ductile Iron for pressure rating over 3000 psi.

Cavity T-5A



0-31 GPM



Ports 1 and 2	Assembly Model Code*
3/8" NPTF	<b>CXED-X*N-DAB</b>
1/2" NPTF	<b>CXED-X*N-DAC</b>
SAE-6	<b>CXED-X*N-DAJ</b>
SAE-8	<b>CXED-X*N-DAK</b>

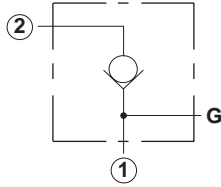
\*Add modifier /S to order Ductile Iron for pressure rating over 3000 psi.

NOTES: Page 102 for cartridge models CX\*A-\*\*\* and CX\*D-\*\*\* shows performance curves, technical tips, and options. See page vii for technical information about line mount bodies including SAE flange pattern specifications. Consult your local Sun Distributor or the Sun Web Site for other port sizes available in the bodies shown above. Model Codes printed in red are Preferred Products and are readily available.

**TWO PORT FLOW CONTROL APPLICATIONS (90 DEGREE BODIES)**

**FREE FLOW  
Port 1 to Port 2**

**0-80 GPM**

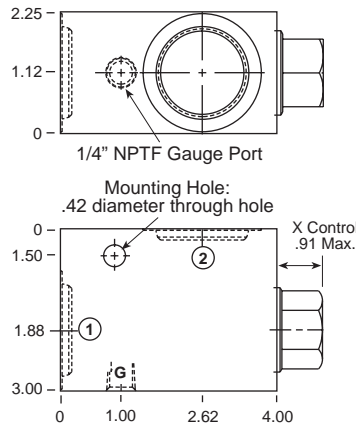


Ports 1 and 2	Assembly Model Code*
3/4" NPTF	<b>CXHA-X*N-IAD</b>
1" NPTF	<b>CXHA-X*N-IAE</b>
1 1/4" NPTF	<b>CXHA-X*N-IAF</b>
SAE-12	<b>CXHA-X*N-IAL</b>
SAE-16	<b>CXHA-X*N-IAM</b>

\*Add modifier /S to order Ductile Iron for pressure rating over 3000 psi.

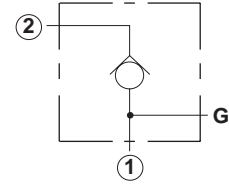
Go to [www.sunhydraulics.com](http://www.sunhydraulics.com) for more product information and pricing.

**Cavity T-16A**



**FREE FLOW  
Port 2 to Port 1**

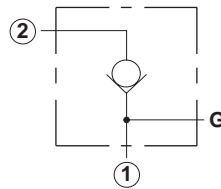
**0-60 GPM**



Ports 1 and 2	Assembly Model Code*
3/4" NPTF	<b>CXGD-X*N-IAD</b>
1" NPTF	<b>CXGD-X*N-IAE</b>
1 1/4" NPTF	<b>CXGD-X*N-IAF</b>
SAE-12	<b>CXGD-X*N-IAL</b>
SAE-16	<b>CXGD-X*N-IAM</b>

\*Add modifier /S to order Ductile Iron for pressure rating over 3000 psi.

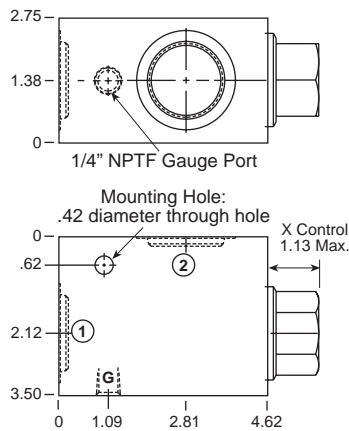
**0-160 GPM**



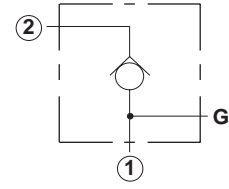
Ports 1 and 2	Assembly Model Code*
3/4" NPTF	<b>CXJA-X*N-LAD</b>
1" NPTF	<b>CXJA-X*N-LAE</b>
1 1/4" NPTF	<b>CXJA-X*N-LAF</b>
SAE-12	<b>CXJA-X*N-LAL</b>
SAE-16	<b>CXJA-X*N-LAM</b>

\*Add modifier /S to order Ductile Iron for pressure rating over 3000 psi.

**Cavity T-18A**



**0-120 GPM**



Ports 1 and 2	Assembly Model Code*
3/4" NPTF	<b>CXID-X*N-LAD</b>
1" NPTF	<b>CXID-X*N-LAE</b>
1 1/4" NPTF	<b>CXID-X*N-LAF</b>
SAE-12	<b>CXID-X*N-LAL</b>
SAE-16	<b>CXID-X*N-LAM</b>

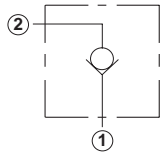
\*Add modifier /S to order Ductile Iron for pressure rating over 3000 psi.

NOTES: Page 102 for cartridge models CX\*A-\*\*\* and CX\*D-\*\*\* shows performance curves, technical tips, and options. See page vii for technical information about line mount bodies including SAE flange pattern specifications. Consult your local Sun Distributor or the Sun Web Site for other port sizes available in the bodies shown above. Model Codes printed in red are Preferred Products and are readily available.

## Line Mounted Assemblies

TWO PORT FLOW CONTROL APPLICATIONS  
(INLINE BODIES)FREE FLOW  
Port 1 to Port 2

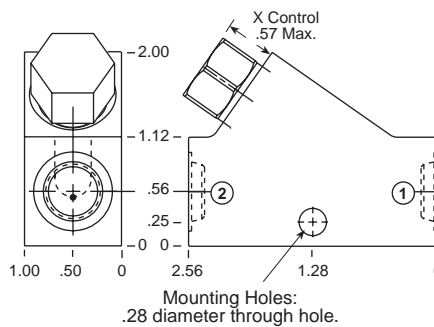
0-10 GPM



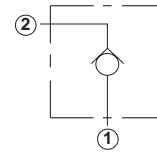
Ports 1 and 2	Assembly Model Code*
1/4" NPTF	<b>CXBA-X*N-ACA</b>
3/8" NPTF	<b>CXBA-X*N-ACB</b>
SAE-4	<b>CXBA-X*N-ACH</b>
SAE-6	<b>CXBA-X*N-ACI</b>

Go to [www.sunhydraulics.com](http://www.sunhydraulics.com)  
for more product information and pricing.

Cavity T-162A

FREE FLOW  
Port 2 to Port 1

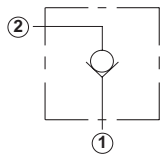
0-8 GPM



Ports 1 and 2	Assembly Model Code*
1/4" NPTF	<b>CXAD-X*N-ACA</b>
3/8" NPTF	<b>CXAD-X*N-ACB</b>
SAE-4	<b>CXAD-X*N-ACH</b>
SAE-6	<b>CXAD-X*N-ACI</b>

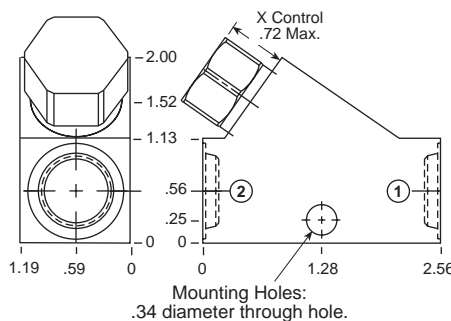
\*Add modifier /S to order Ductile Iron for pressure  
rating over 3000 psi.\*Add modifier /S to order Ductile Iron for pressure  
rating over 3000 psi.

0-20 GPM

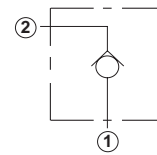


Ports 1 and 2	Assembly Model Code*
1/4" NPTF	<b>CXDA-X*N-GCA</b>
3/8" NPTF	<b>CXDA-X*N-GCB</b>
SAE-6	<b>CXDA-X*N-GCI</b>
SAE-8	<b>CXDA-X*N-GCJ</b>

Cavity T-13A



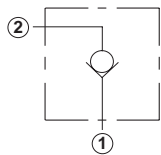
0-16 GPM



Ports 1 and 2	Assembly Model Code*
1/4" NPTF	<b>CXCD-X*N-GCA</b>
3/8" NPTF	<b>CXCD-X*N-GCB</b>
SAE-6	<b>CXCD-X*N-GCI</b>
SAE-8	<b>CXCD-X*N-GCJ</b>

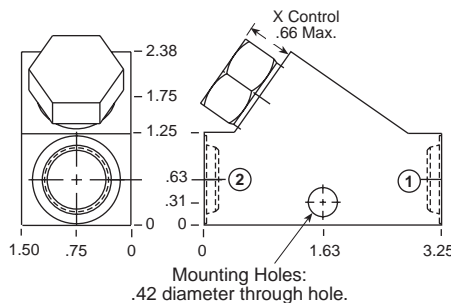
\*Add modifier /S to order Ductile Iron for pressure  
rating over 3000 psi.\*Add modifier /S to order Ductile Iron for pressure  
rating over 3000 psi.

0-40 GPM

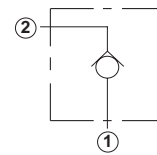


Ports 1 and 2	Assembly Model Code*
3/8" NPTF	<b>CXFA-X*N-DCB</b>
1/2" NPTF	<b>CXFA-X*N-DCC</b>
SAE-6	<b>CXFA-X*N-DCI</b>
SAE-8	<b>CXFA-X*N-DCJ</b>
SAE-10	<b>CXFA-X*N-DCK</b>

Cavity T-5A



0-31 GPM



Ports 1 and 2	Assembly Model Code*
3/8" NPTF	<b>CXED-X*N-DCB</b>
1/2" NPTF	<b>CXED-X*N-DCC</b>
SAE-6	<b>CXED-X*N-DCI</b>
SAE-8	<b>CXED-X*N-DCJ</b>
SAE-10	<b>CXED-X*N-DCK</b>

\*Add modifier /S to order Ductile Iron for pressure  
rating over 3000 psi.\*Add modifier /S to order Ductile Iron for pressure  
rating over 3000 psi.

NOTES: Page 102 for cartridge models CX\*A-\*\*\* and CX\*D-\*\*\* shows performance curves, technical tips, and options.  
See page vii for technical information about line mount bodies including SAE flange pattern specifications.  
Consult your local Sun Distributor or the Sun Web Site for other port sizes available in the bodies shown above.  
Model Codes printed in red are Preferred Products and are readily available.

**TWO PORT FLOW CONTROL APPLICATIONS  
(INLINE/INLINE 1.50"/2.00" SAE C61 FLANGE PORT BODIES)**

**FREE FLOW  
Port 1 to Port 2**

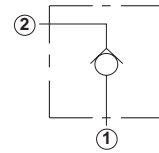
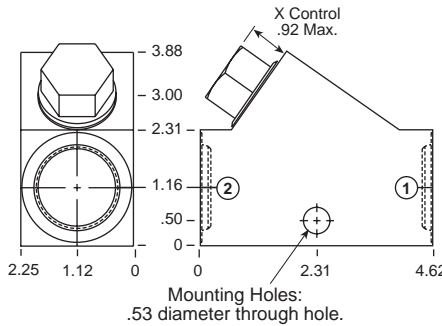
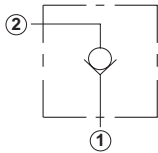
Go to [www.sunhydraulics.com](http://www.sunhydraulics.com)  
for more product information and pricing.

**FREE FLOW  
Port 2 to Port 1**

**0-80 GPM**

**Cavity T-16A**

**0-60 GPM**



Ports 1 and 2	Assembly Model Code*
3/4" NPTF	<b>CXHA-X*N-ICD</b>
1" NPTF	<b>CXHA-X*N-ICE</b>
1 1/4" NPTF	<b>CXHA-X*N-ICF</b>
SAE-12	<b>CXHA-X*N-ICL</b>
SAE-16	<b>CXHA-X*N-ICM</b>

Ports 1 and 2	Assembly Model Code*
3/4" NPTF	<b>CXGD-X*N-ICD</b>
1" NPTF	<b>CXGD-X*N-ICE</b>
1 1/4" NPTF	<b>CXGD-X*N-ICF</b>
SAE-12	<b>CXGD-X*N-ICL</b>
SAE-16	<b>CXGD-X*N-ICM</b>

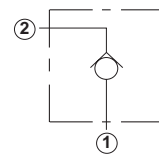
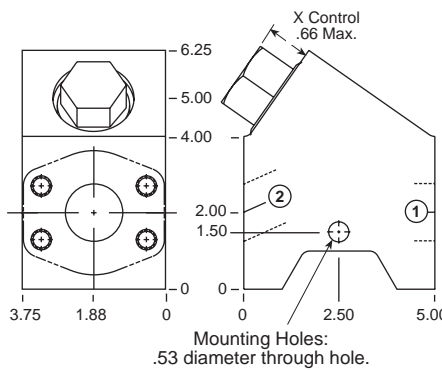
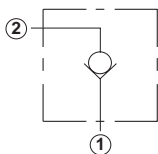
\*Add modifier /S to order Ductile Iron for pressure rating over 3000 psi.

\*Add modifier /S to order Ductile Iron for pressure rating over 3000 psi.

**0-160 GPM**

**Cavity T-18A**

**0-120 GPM**



Ports 1 and 2	Assembly Model Code*
1 1/2" SAE C61	<b>CXJA-X*N-ZLS</b>

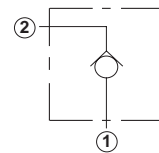
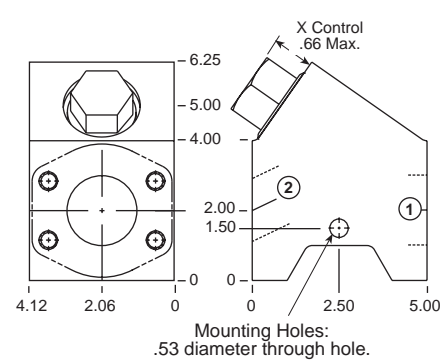
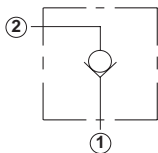
Ports 1 and 2	Assembly Model Code*
1 1/2" SAE C61	<b>CXID-X*N-ZLS</b>

\*Add modifier /S to order Ductile Iron for pressure rating over 3000 psi.

**0-160 GPM**

**Cavity T-18A**

**0-120 GPM**



Ports 1 and 2	Assembly Model Code*
2" SAE C61	<b>CXJA-X*N-ZLR</b>

Ports 1 and 2	Assembly Model Code*
2" SAE C61	<b>CXID-X*N-ZLR</b>

\*Add modifier /S to order Ductile Iron for pressure rating over 3000 psi.

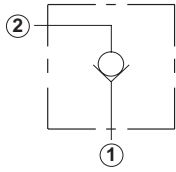
NOTES: Page 102 for cartridge models CX\*A-\*\*\* and CX\*D-\*\*\* shows performance curves, technical tips, and options. See page vii for technical information about line mount bodies including SAE flange pattern specifications. Consult your local Sun Distributor or the Sun Web Site for other port sizes available in the bodies shown above. Model Codes printed in red are Preferred Products and are readily available.

## Line Mounted Assemblies

# TWO PORT FLOW CONTROL APPLICATIONS (2.00" SAE C61/C62 FLANGE PORT BODIES, 2 PORT CAVITY IN PARALLEL)

**FREE FLOW**  
Port 1 to Port 2

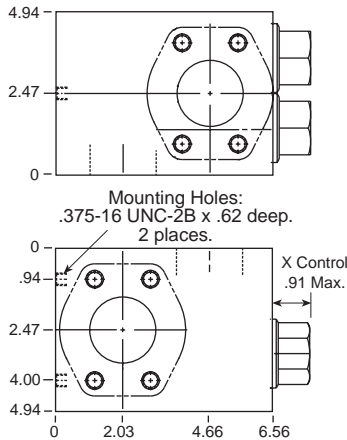
**0-320 GPM**



Ports 1 and 2	Assembly Model Code*
2" SAE C61	<b>CXJA-X*N-XZY</b>

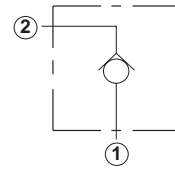
Go to [www.sunhydraulics.com](http://www.sunhydraulics.com)  
for more product information and pricing.

**Cavity T-18A**



**FREE FLOW**  
Port 2 to Port 1

**0-240 GPM**



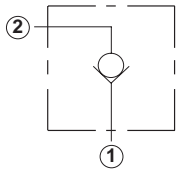
Ports 1 and 2	Assembly Model Code*
2" SAE C61	<b>CXID-X*N-XZY</b>

\*Add modifier **/S** to order Ductile Iron for pressure rating over 3000 psi.

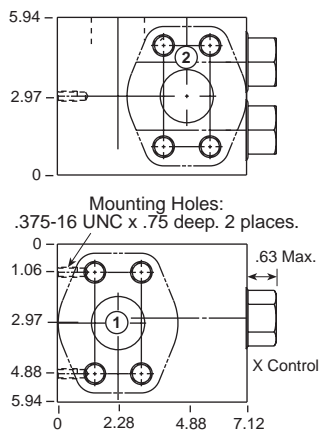
**0-320 GPM**

**Cavity T-18A**

**0-240 GPM**



Ports 1 and 2	Assembly Model Code*
2" SAE C62	<b>CXJA-X*N-VTN</b>



Ports 1 and 2	Assembly Model Code*
2" SAE C62	<b>CXID-X*N-VTN</b>

\*Add modifier **/S** to order Ductile Iron for pressure rating over 3000 psi.

NOTES: Page 102 for cartridge models CX\*A-\*\*\* and CX\*D-\*\*\* shows performance curves, technical tips, and options.  
See page vii for technical information about line mount bodies including SAE flange pattern specifications.  
Consult your local Sun Distributor or the Sun Web Site for other port sizes available in the bodies shown above.